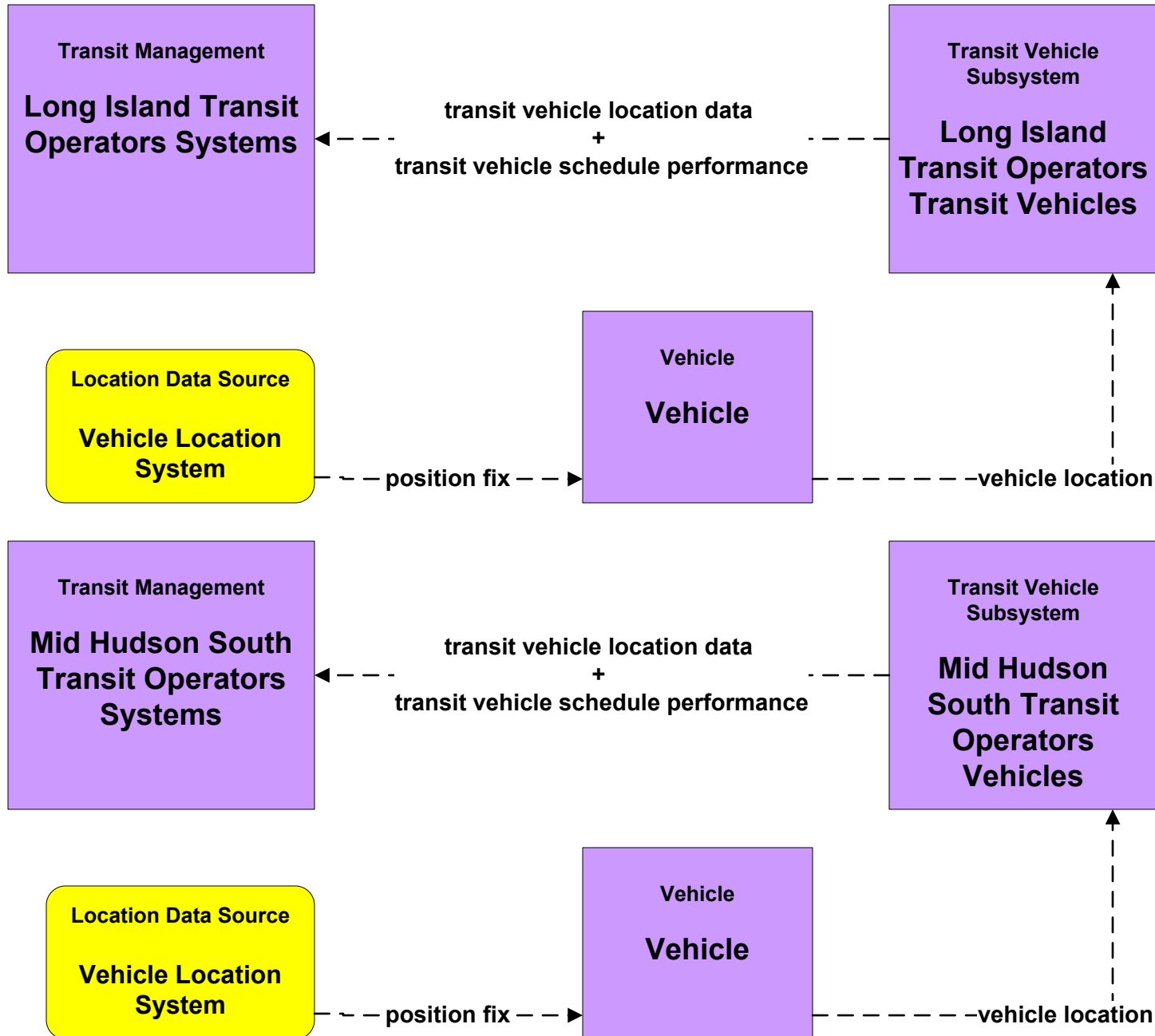


# APTS1 - Transit Vehicle Tracking

## Long Island Transit Operators, Mid Hudson South Transit Operators



# APTS1 - Transit Vehicle Tracking

## New York City Metropolitan Area Regional Transit Vehicle Location Consortium

Future use of common technologies and standards to allow participating agencies to share / develop a common transit vehicle tracking infrastructure (e.g., monitor the location of their transit vehicles along other agency's vehicle location systems).

**Transit Management**

- Long Island Transit Operators Systems
- +
- Mid Hudson South Transit Operators Systems
- +
- MTA LIRR Operations Center Systems
- +
- MTA Long Island Bus Fixed Route Bus Operations Center
- +
- MTA Long Island Bus Paratransit Operations Center
- +
- MTA Metro North Operations Center Systems
- +
- MTA NYCT Bus Command Center - Operations
- +
- MTA NYCT Paratransit Command Center
- +
- MTA NYCT Staten Island Railway Control Facility

*transit vehicle location data\_ud*  
+  
*transit vehicle schedule performance\_ud*

*transit vehicle location data\_ud*  
+  
*transit vehicle schedule performance\_ud*

**Other TRM**

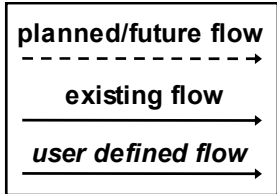
**Regional Transit Vehicle Location Consortium**

*transit vehicle location data\_ud*  
+  
*transit vehicle schedule performance\_ud*

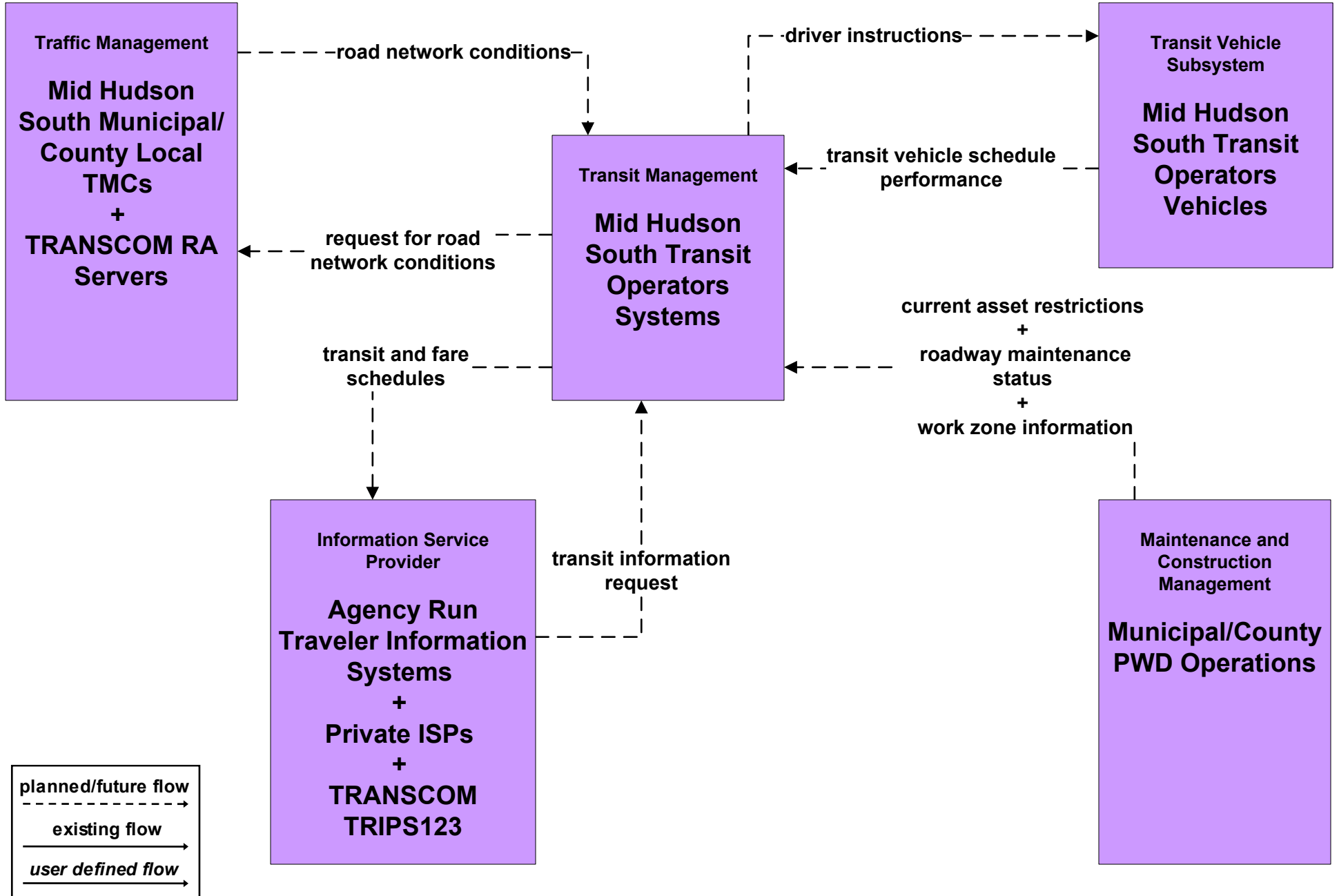
*transit vehicle location data\_ud*  
+  
*transit vehicle schedule performance\_ud*

**Transit Management**

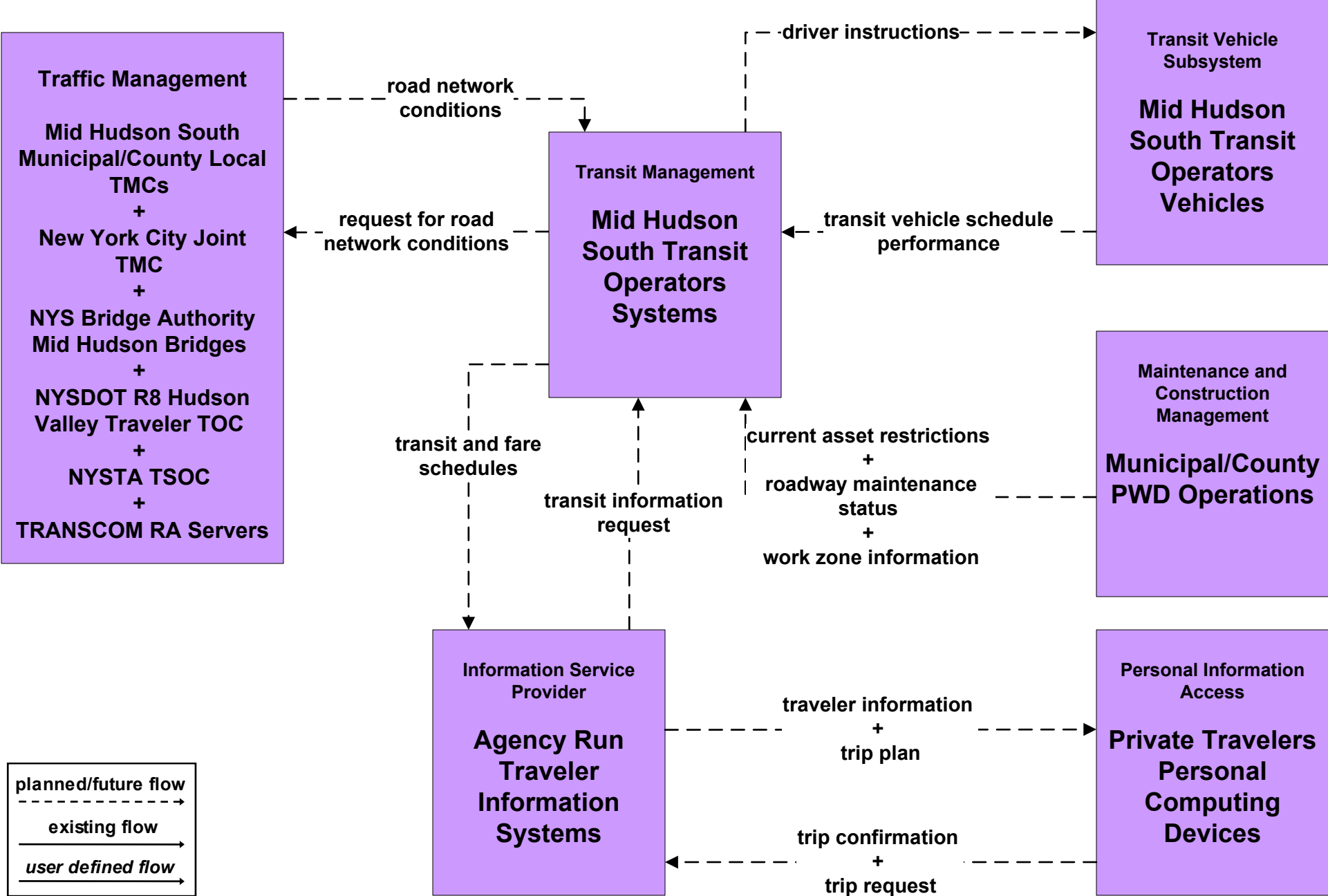
- MTA NYCT Subway Rail Control Center
- +
- NJT Bus Operations Systems
- +
- NJT Rail Operations Systems
- +
- NYCDOT Division of Ferry Operations Systems
- +
- NYCDOT Franchise Bus Operators Systems
- +
- Private Ferry Operators Systems
- +
- Private Long-Distance Bus Operators Systems
- +
- Private Paratransit Operators Systems
- +
- TRANSCOM TRIPS123
- +
- Westchester County Bee Line Fare Management System



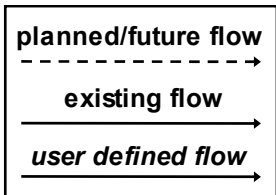
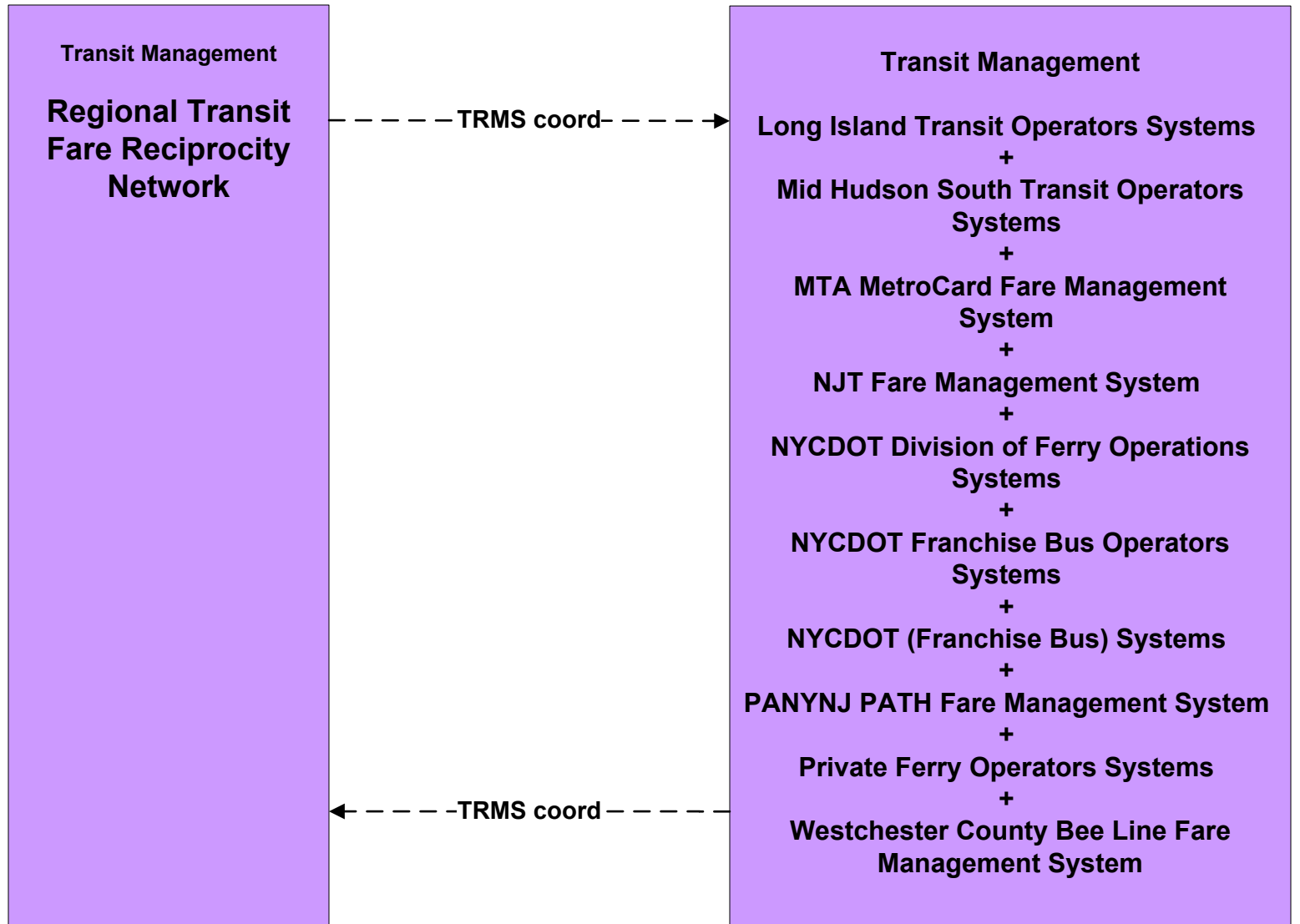
# APTS2 - Transit Fixed-Route Operations Mid Hudson South Operators Systems



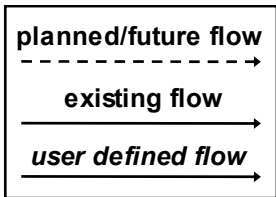
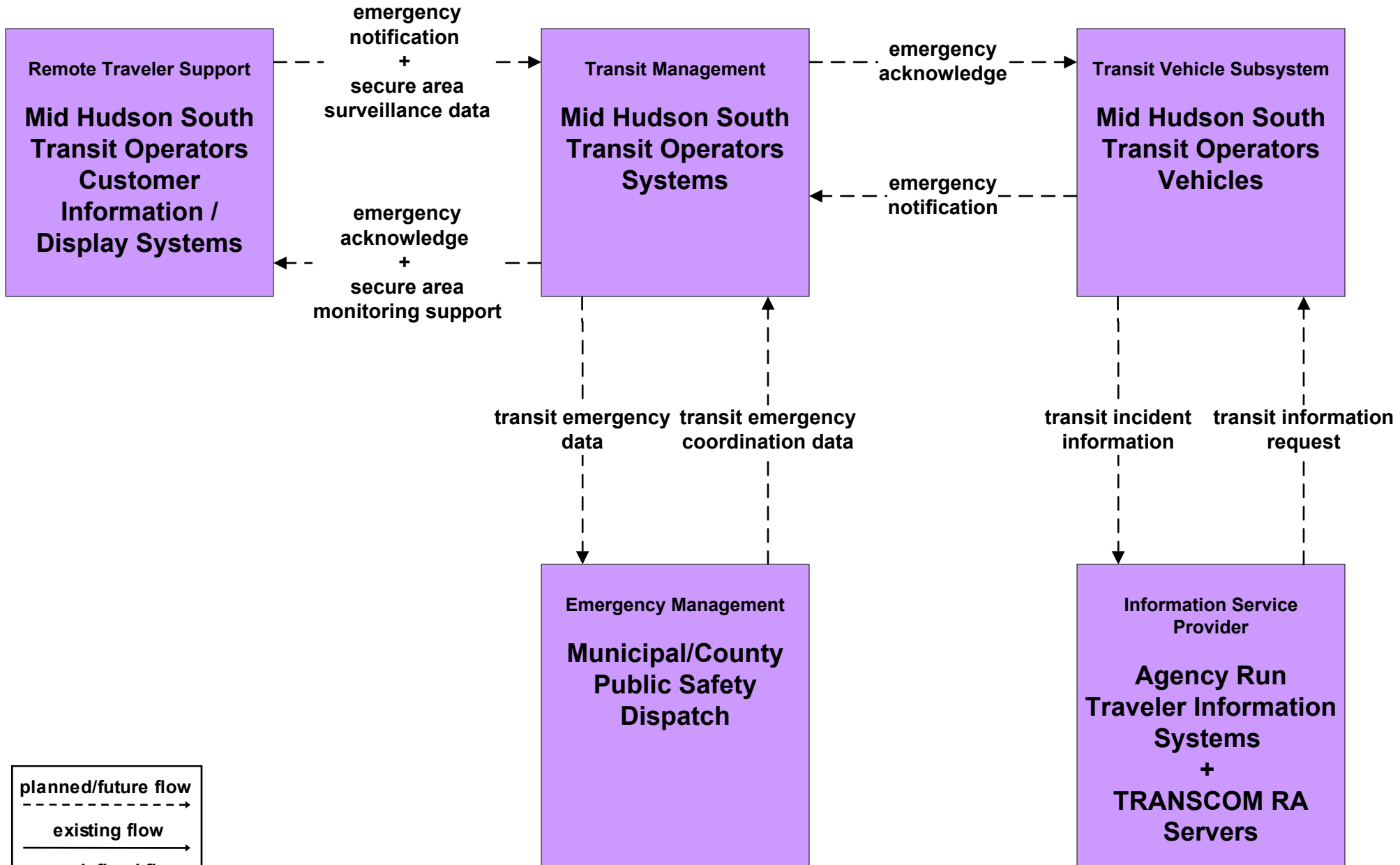
# APTS3 - Demand Response Transit Operations Mid Hudson South Transit Operators



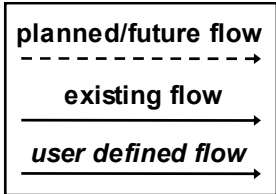
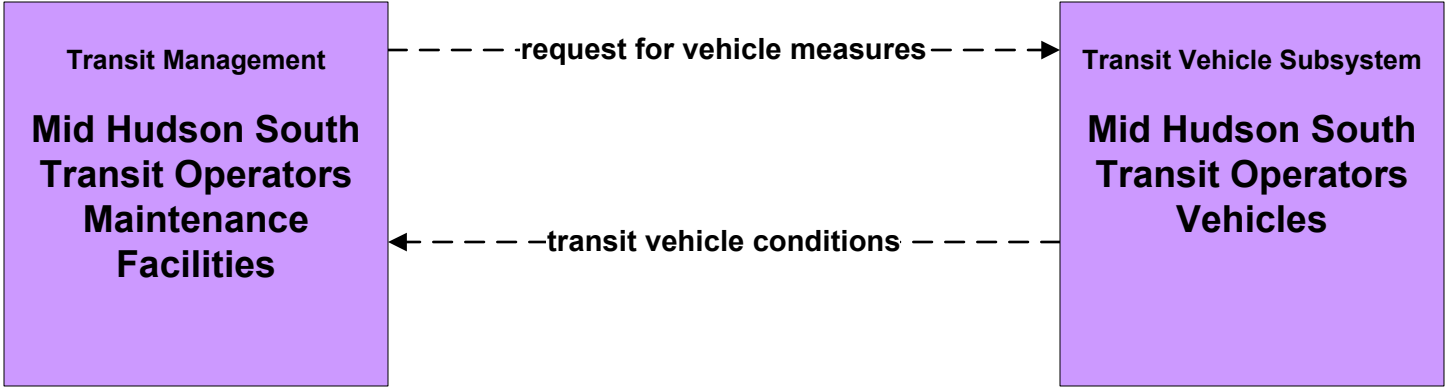
**APTS4 - Transit Passenger and Fare Payment  
Regional Transit Fare Reciprocity Network (FUTURE)**



**APTS5 - Transit Security**  
**Mid Hudson South Transit Operators**



**APTS6 - Transit Vehicle Maintenance  
Mid Hudson South Transit Operators**



**APTS7 - Multimodal Coordination  
Regional Transit Information Exchange**

**Transit Management**

- AMTRAK Operations Center**
- +
- Long Island Transit Operators Systems**
- +
- Mid Hudson South Transit Operators Systems**
- +
- MTA LIRR Operations Center Systems**
- +
- MTA Long Island Bus Fixed Route Bus Operations Center**
- +
- MTA Metro North Operations Center Systems**
- +
- MTA NYCT Bus Command Center - Operations**
- +
- MTA NYCT Staten Island Railway Control Facility**
- +
- MTA NYCT Subway Rail Control Center**
- +
- NJT Bus Operations Systems**
- +
- NJT Rail Operations Systems**
- +
- NYCDOT (Franchise Bus) Systems**
- +
- PANYNJ TB/T Bus Terminals/Stations Communications Desk/  
Operations Center**
- +
- PANYNJ PATH Operations Center**
- +
- Private Ferry Operators Systems**
- +
- Private Long-Distance Bus Operators Systems**
- +
- TRANSCOM Other Member / Non-Member Agencies Systems**
- +
- Westchester County Bee Line Operations Center Systems**

Question: Should the PANYNJ Bus Terminal be here?

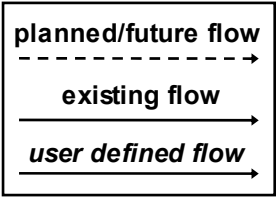
**Other TRM**

**TRANSCOM TRIPS123**

*transit incident information\_ud*  
+  
*transit schedules\_ud*  
+  
*transit traveler information coordination\_ud*

*transit incident information\_ud*  
+  
*transit schedules\_ud*  
+  
*transit traveler information coordination\_ud*

*Outside NYC, transit agencies are likely to exchange transit schedules. E.g., MTA MNR & NJ Transit*



---TRMS coord---

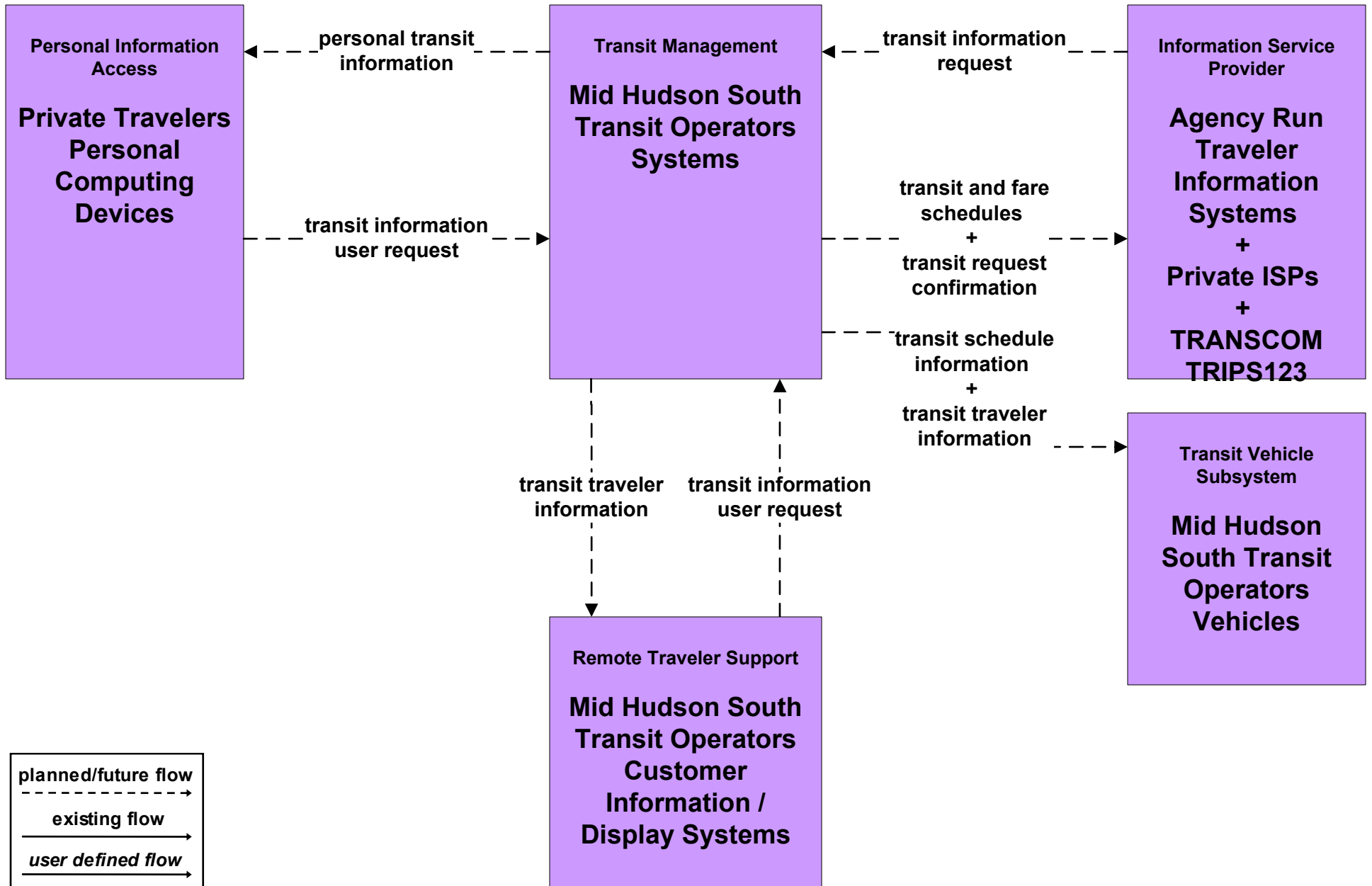
---TRMS coord---

---TRMS coord---

---TRMS coord---

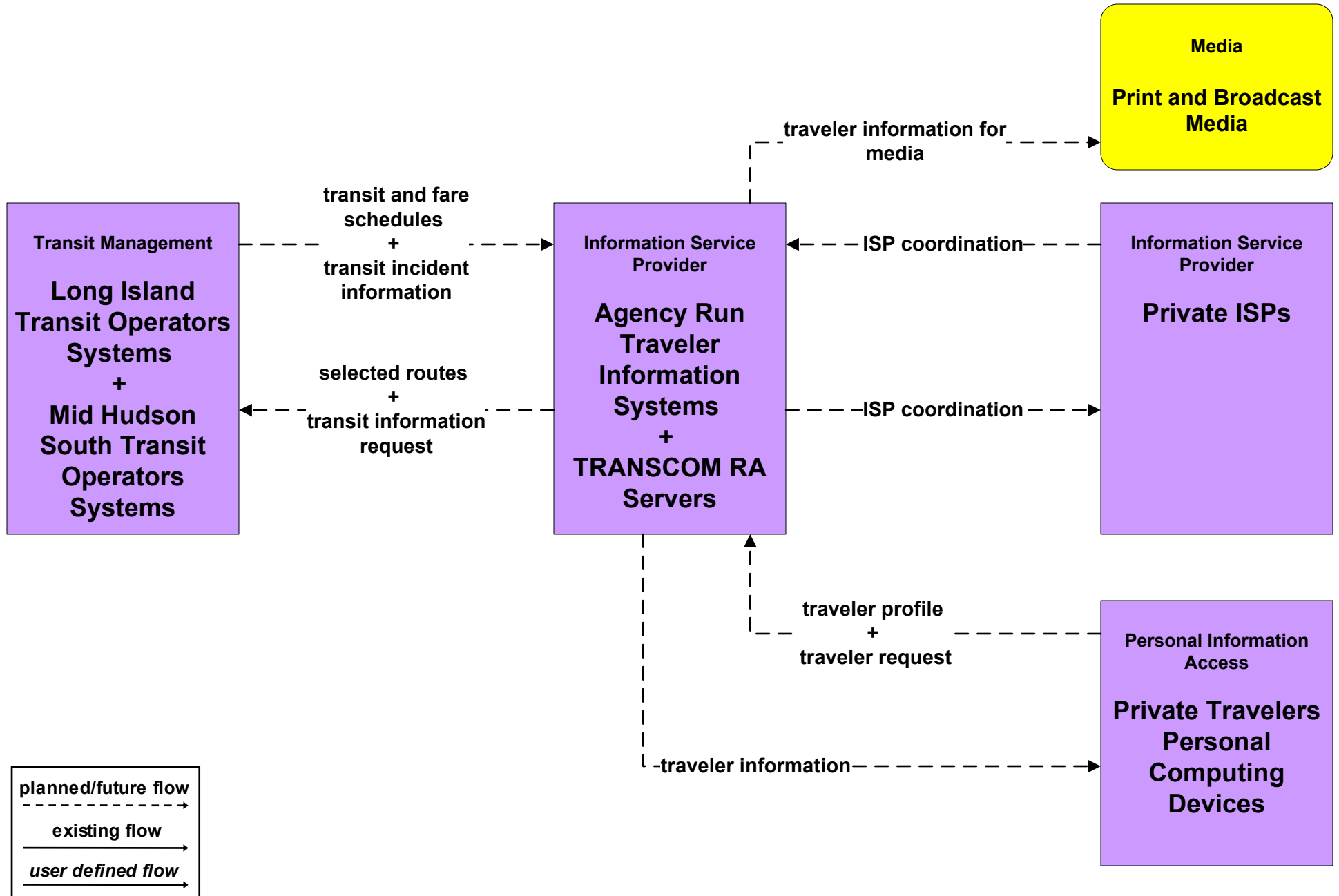


# APTS8 - Transit Traveler Information Mid Hudson South Transit Operators

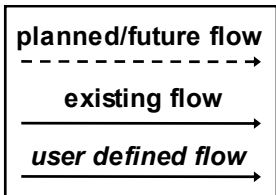
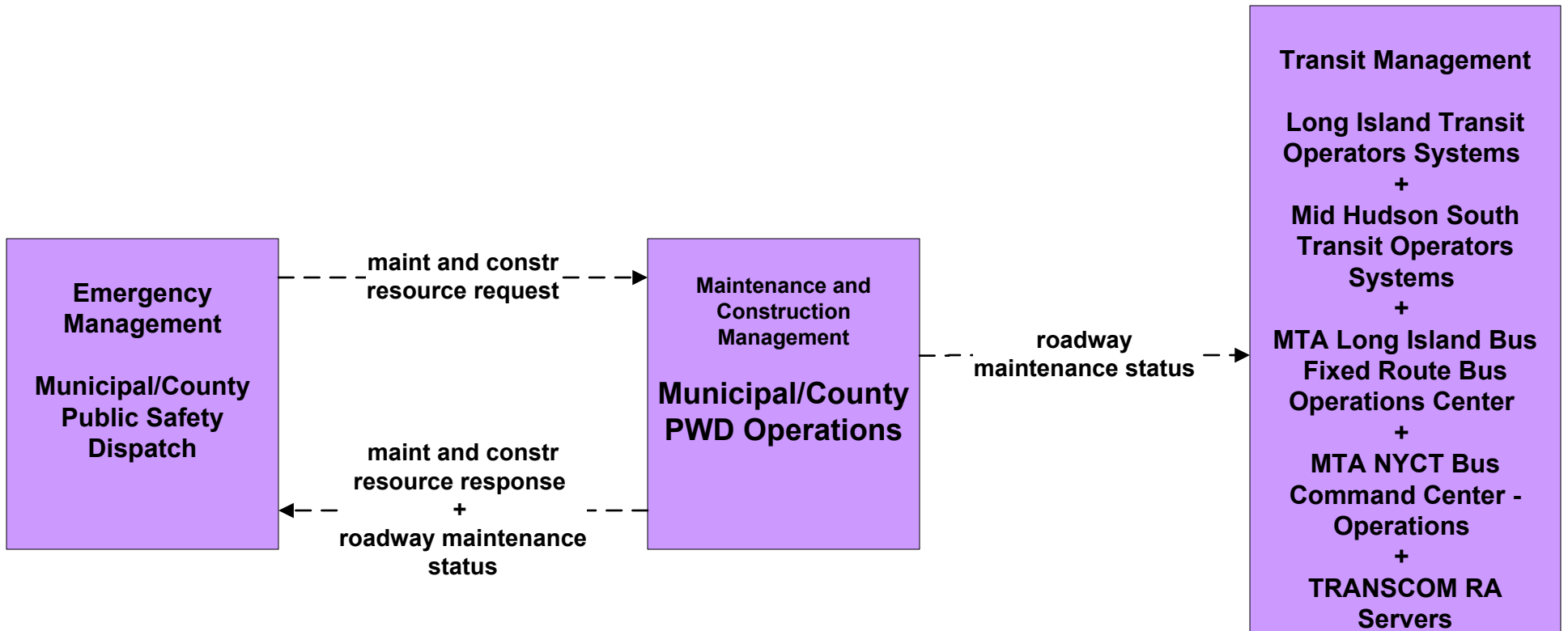


# ATIS2 - Interactive Traveler Information

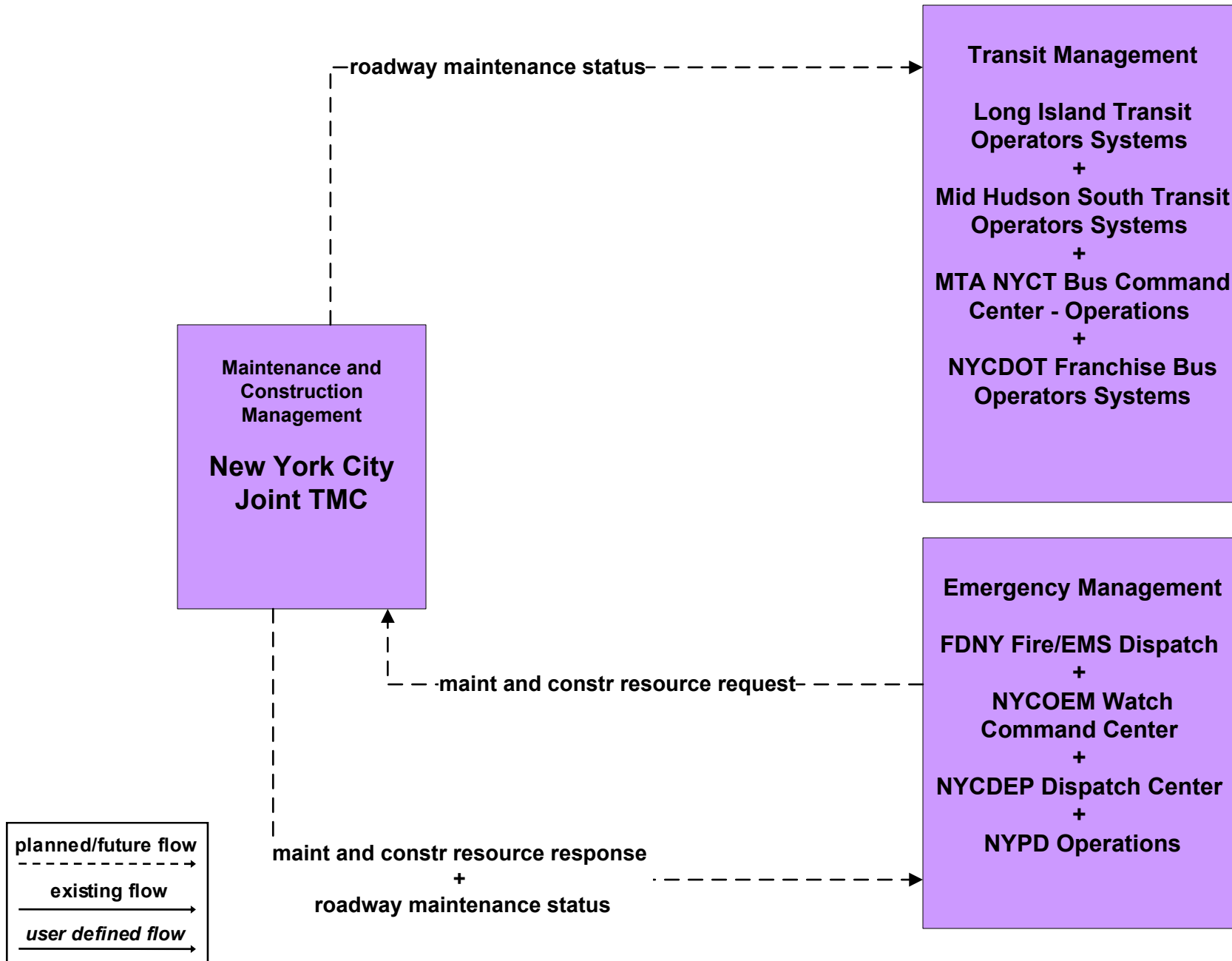
## Long Island / Mid Hudson South Transit Operators Traveler Information Systems



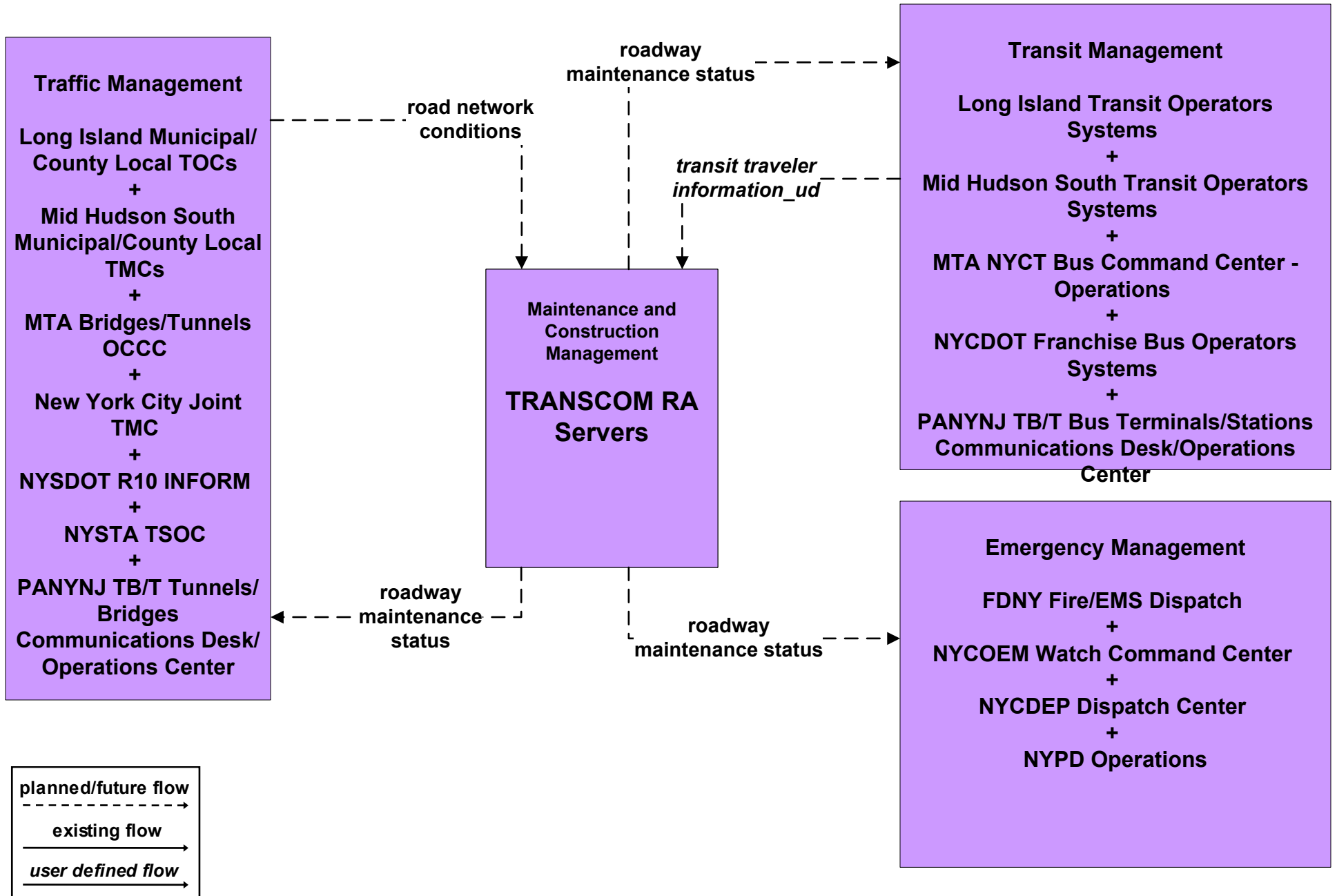
**MC06 - Winter Maintenance  
Municipal/County PWD Operations (2 of 2)**



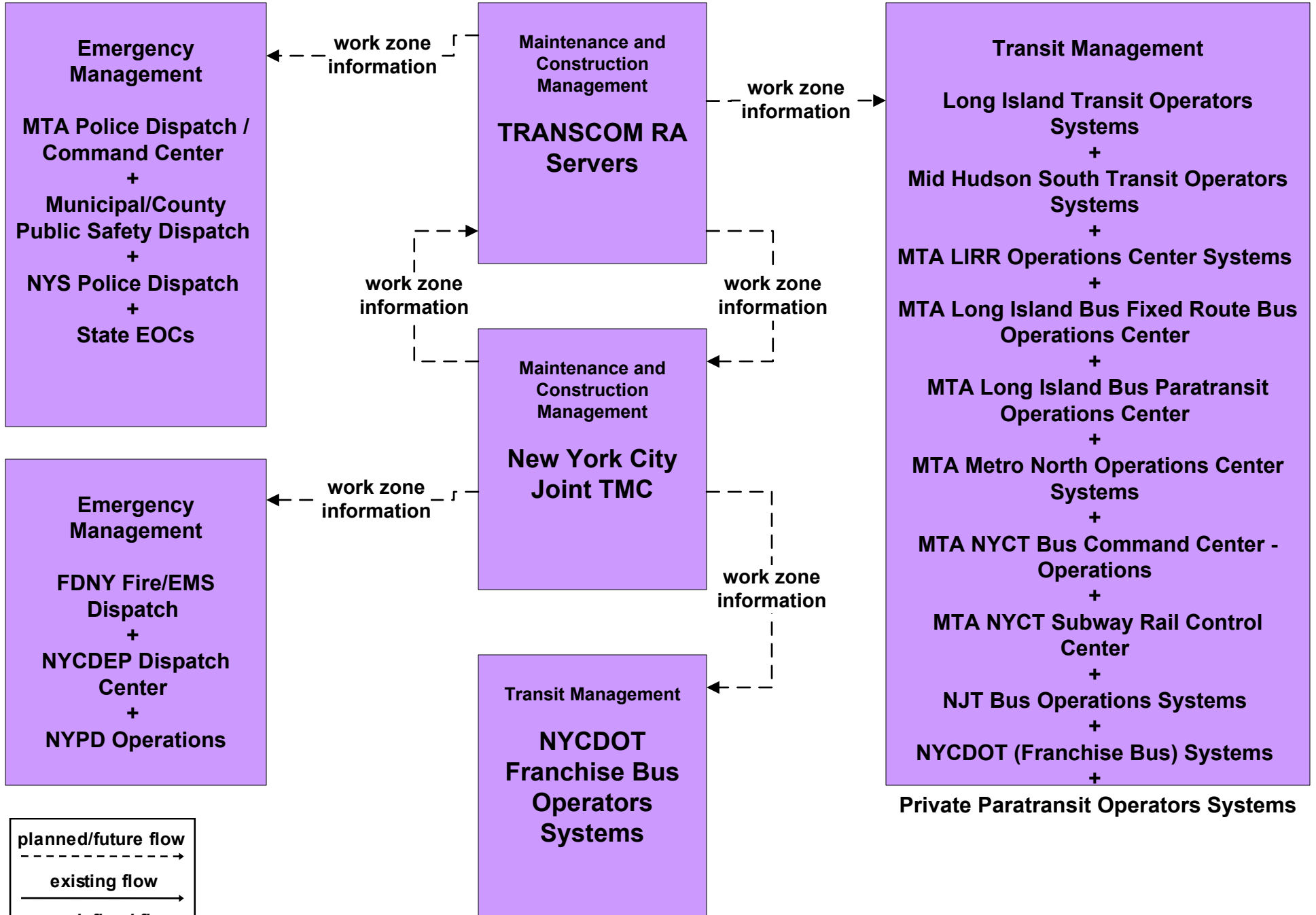
**MC06 - Winter Maintenance  
New York City Joint TMC (2 of 2)**



# MC06 - Winter Maintenance TRANSCOM



# MC08 - Workzone Management (NYCDOT and TRANSCOM)



**MC10 - Maintenance and Construction Activity Coordination  
(NYCDOT and TRANSCOM)**

**Emergency Management**

MTA Police Dispatch / Command Center  
+  
Municipal/County Public Safety Dispatch  
+  
New York City Joint TMC  
+  
NYS Police Dispatch  
+  
State EOCs

**Emergency Management**

FDNY Fire/EMS Dispatch  
+  
NYCDEP Dispatch Center  
+  
NYPD Operations

Maintenance and Construction Management  
**TRANSCOM RA Servers**

Maintenance and Construction Management  
**New York City Joint TMC**

Transit Management  
**NYCDOT Franchise Bus Operators Systems**

**Transit Management**

Long Island Transit Operators Systems  
+  
Mid Hudson South Transit Operators Systems  
+  
MTA LIRR Operations Center Systems  
+  
MTA Long Island Bus Fixed Route Bus Operations Center  
+  
MTA Long Island Bus Paratransit Operations Center  
+  
MTA Metro North Operations Center Systems  
+  
MTA NYCT Bus Command Center - Operations  
+  
Private Paratransit Operators Systems  
+  
MTA NYCT Staten Island Railway Control Facility  
+  
MTA NYCT Subway Rail Control Center  
+  
NJT Bus Operations Systems  
+  
NYCDOT (Franchise Bus) Systems  
+  
PANYNJ TB/T Bus Terminals/Stations Communications Desk/Operations Center  
+  
PANYNJ PATH Operations Center

