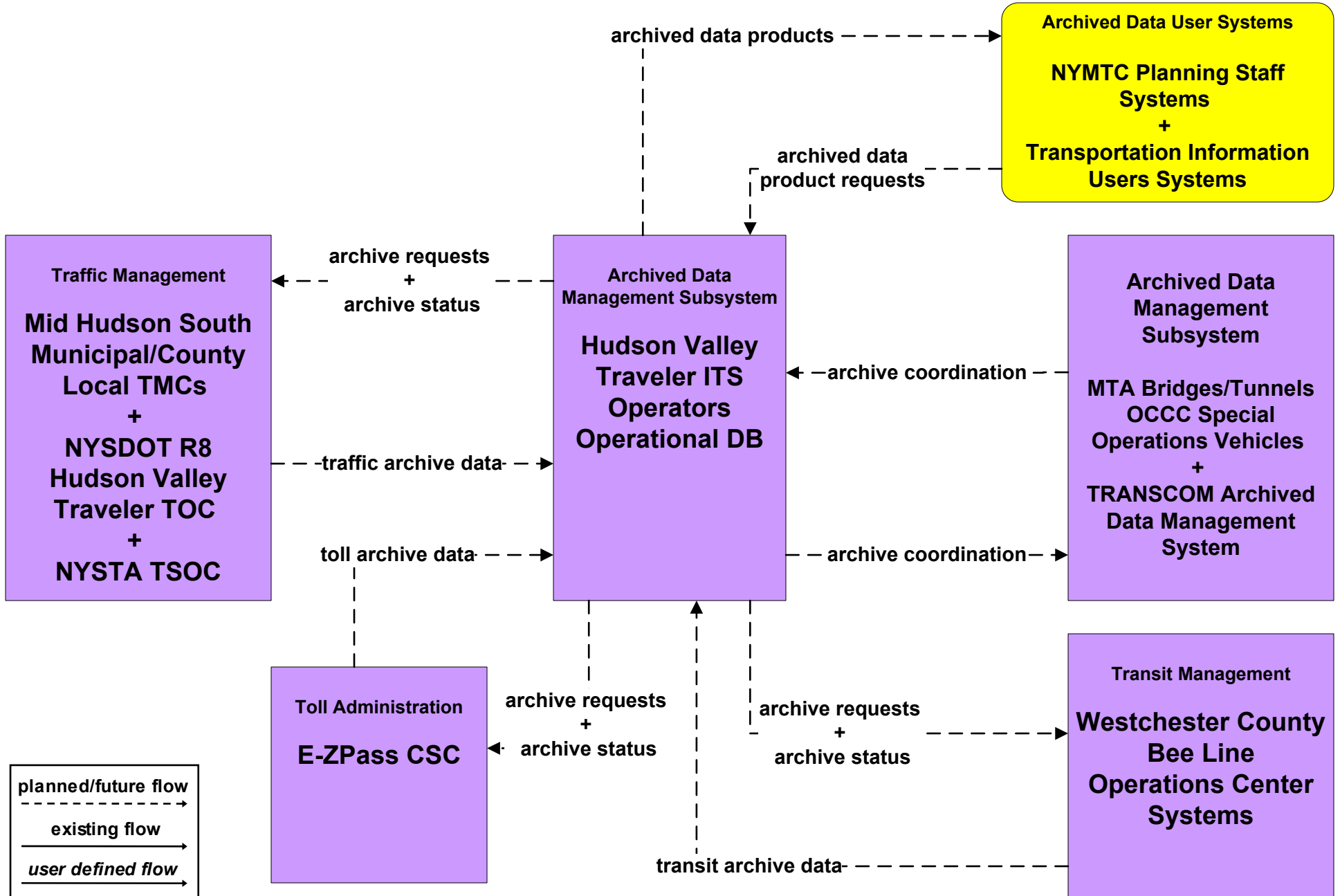
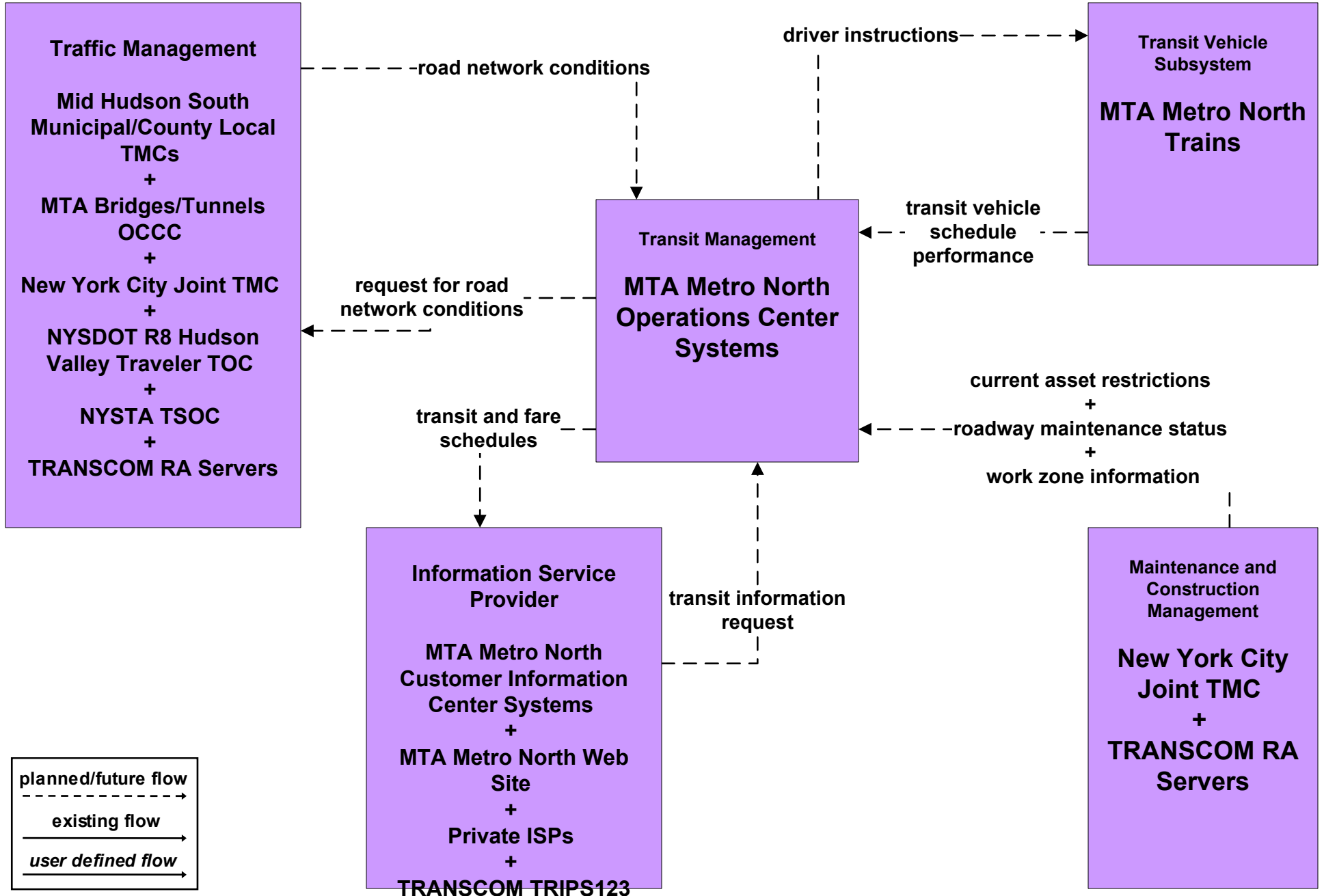


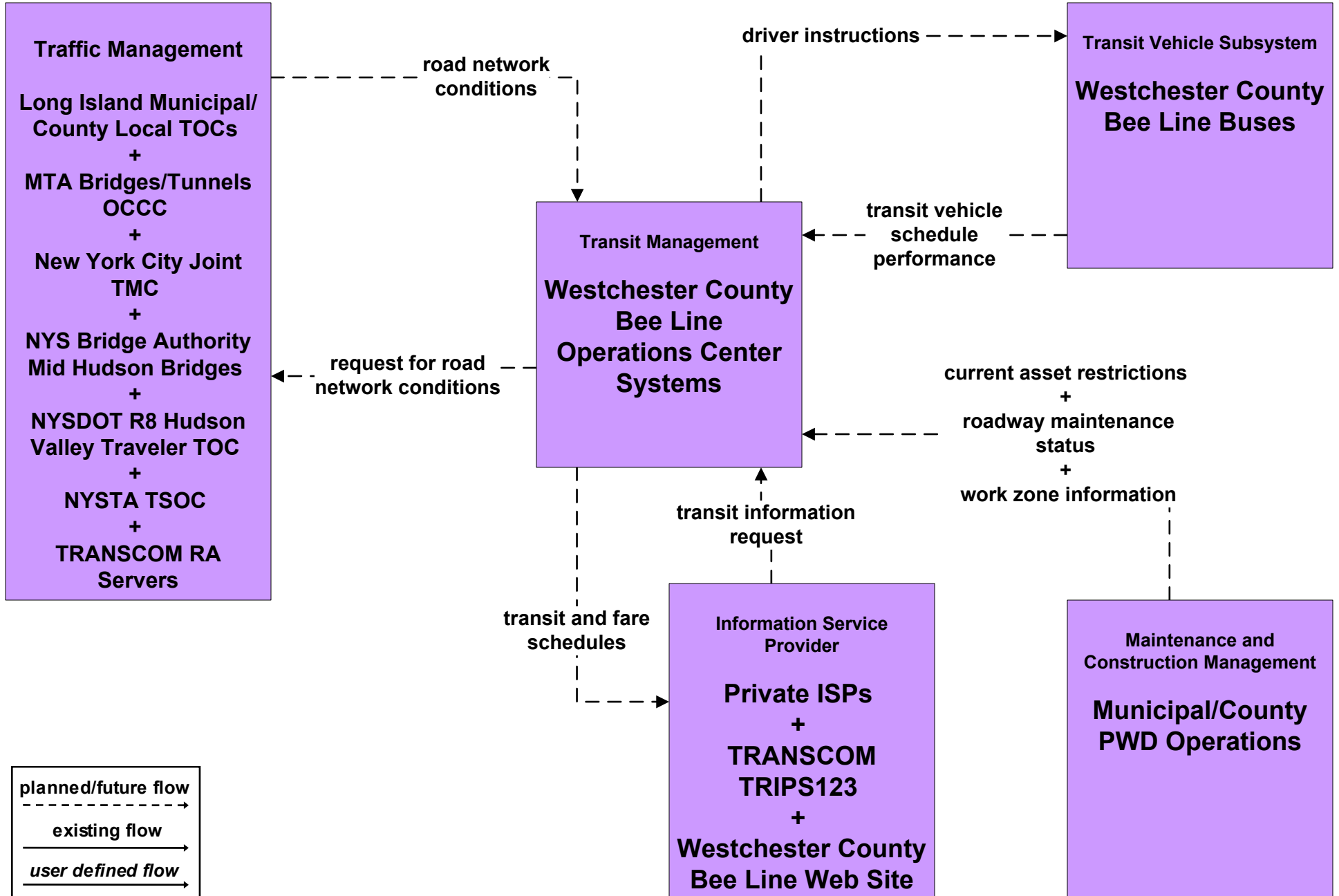
# AD1 - ITS Data Mart Hudson Valley



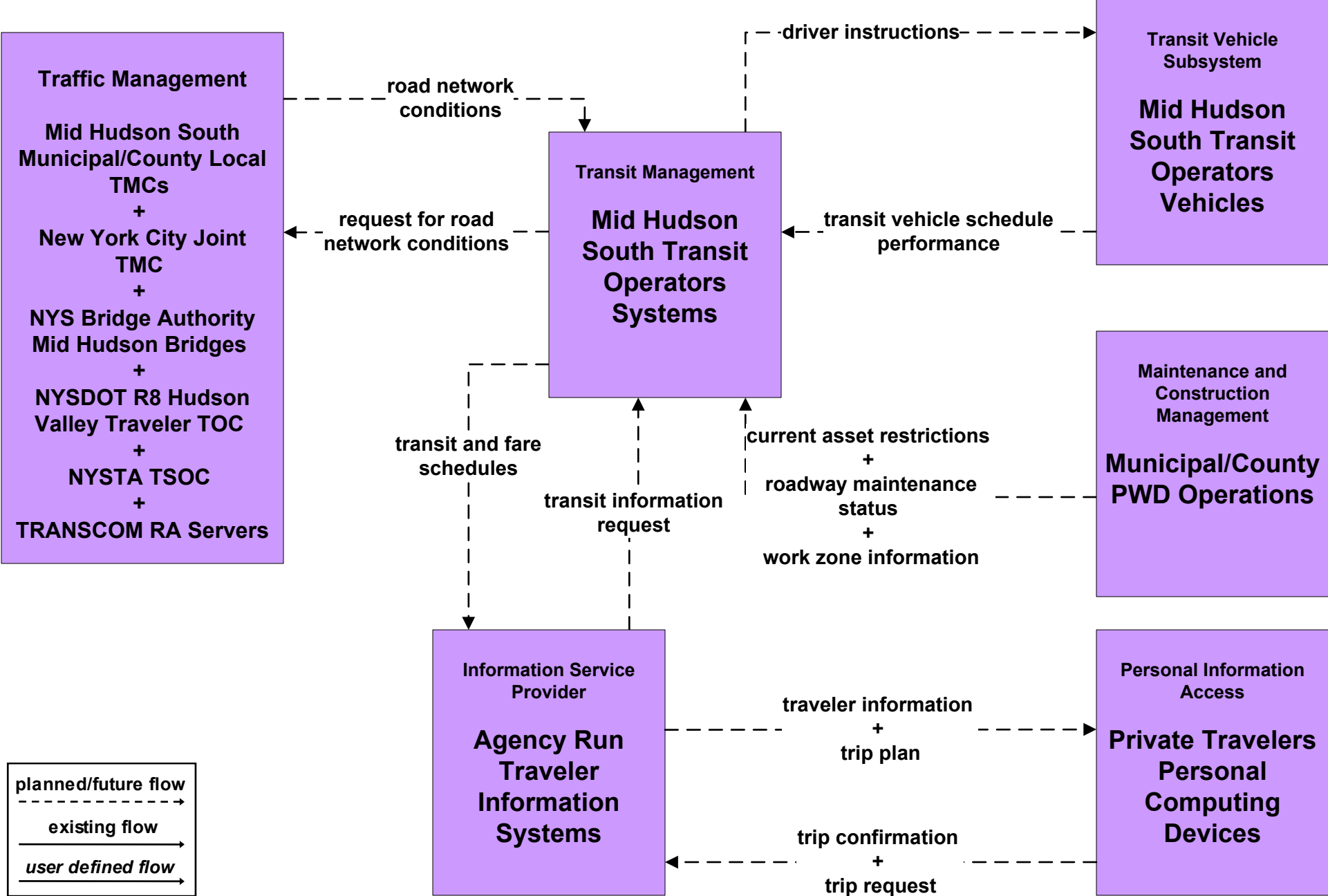
# APTS2 - Transit Fixed-Route Operations MTA Metro North Railroad



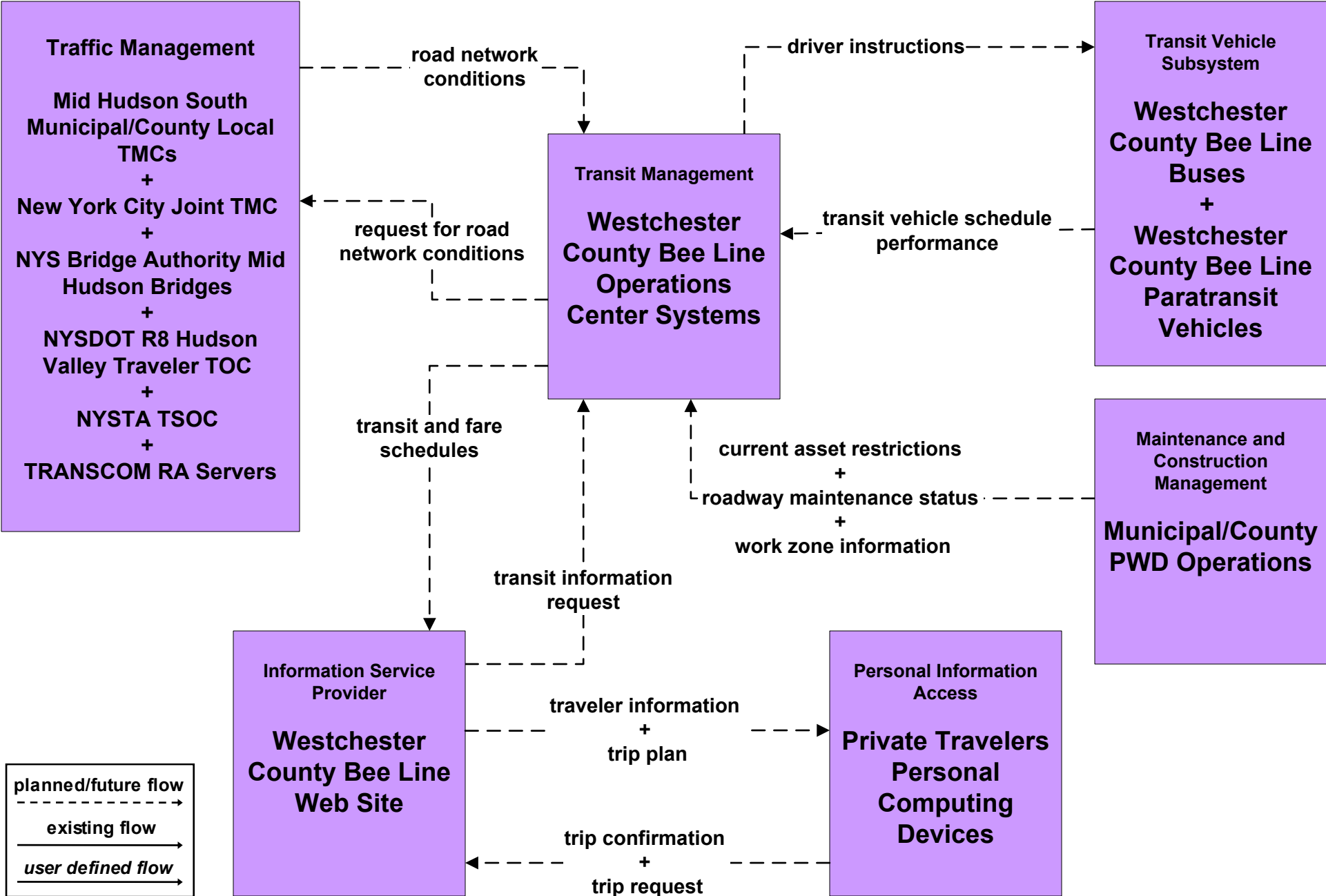
# APTS2 - Transit Fixed-Route Operations Westchester County Bee Line



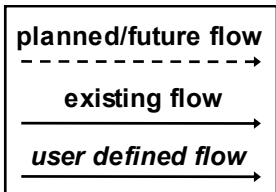
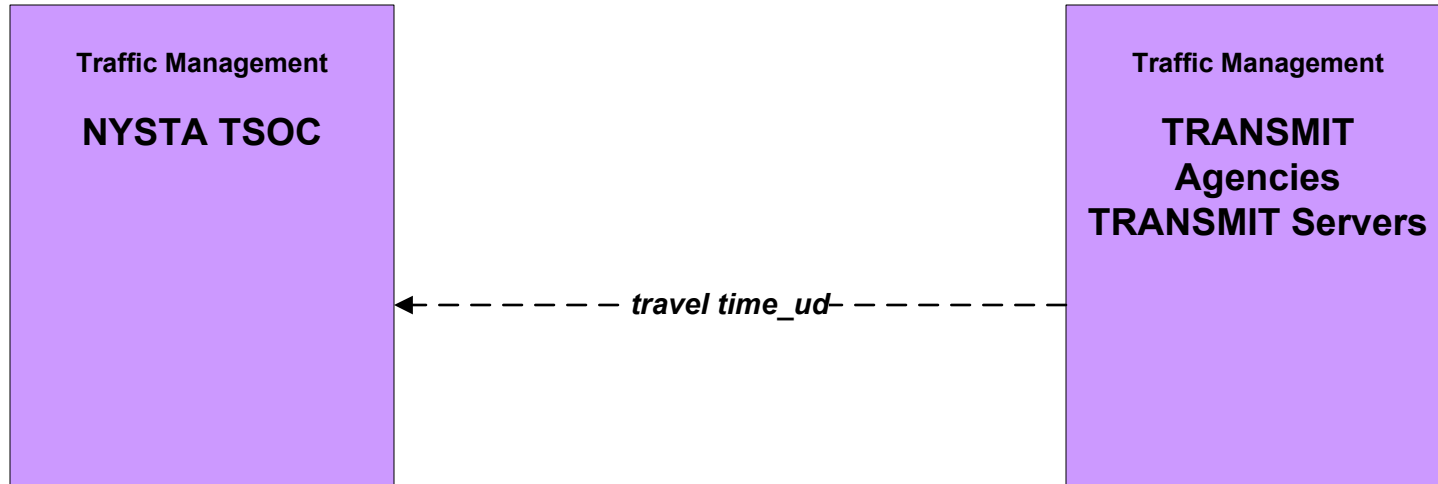
# APTS3 - Demand Response Transit Operations Mid Hudson South Transit Operators



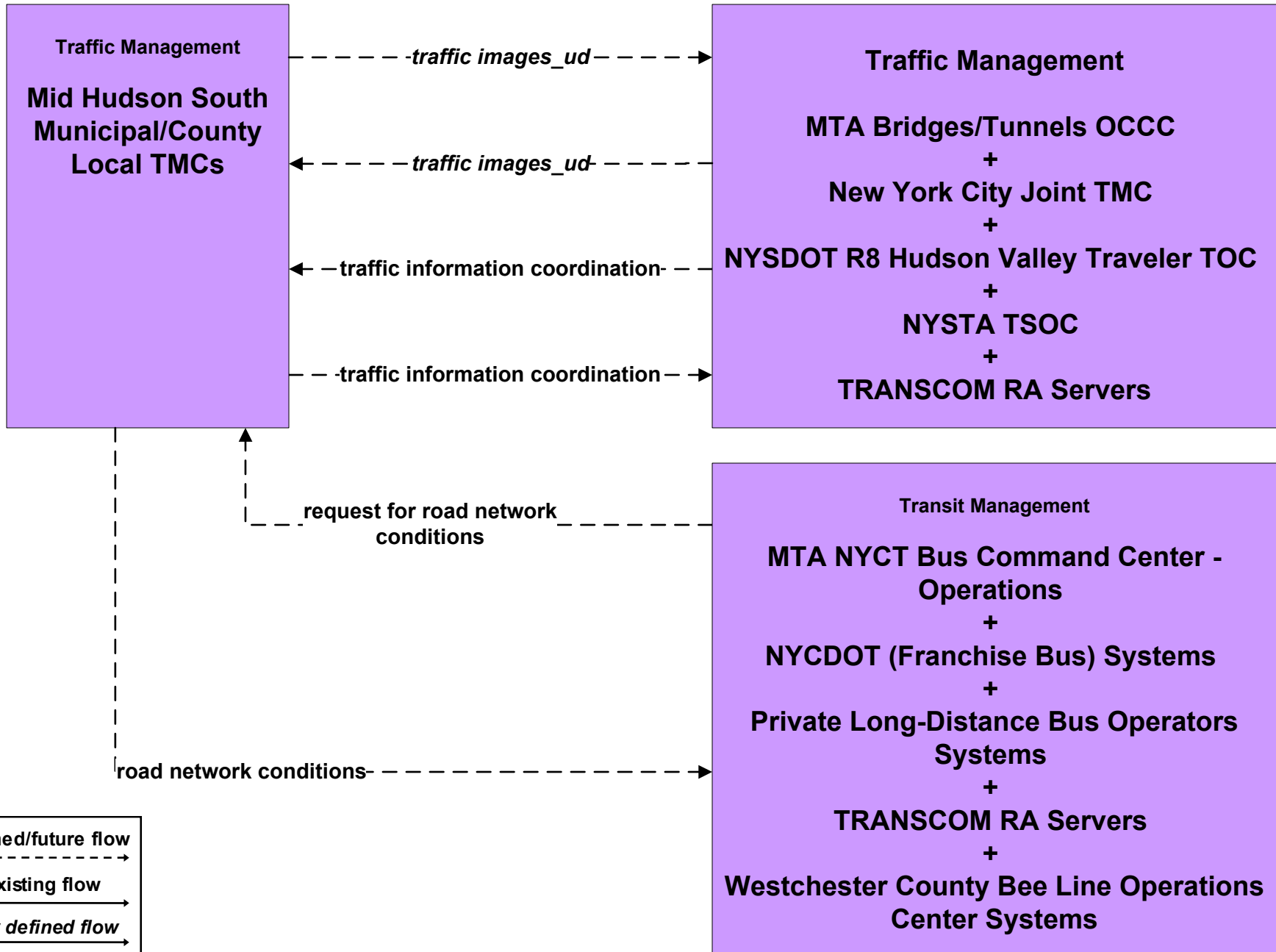
# APTS3 - Demand Response Transit Operations Westchester County Bee Line



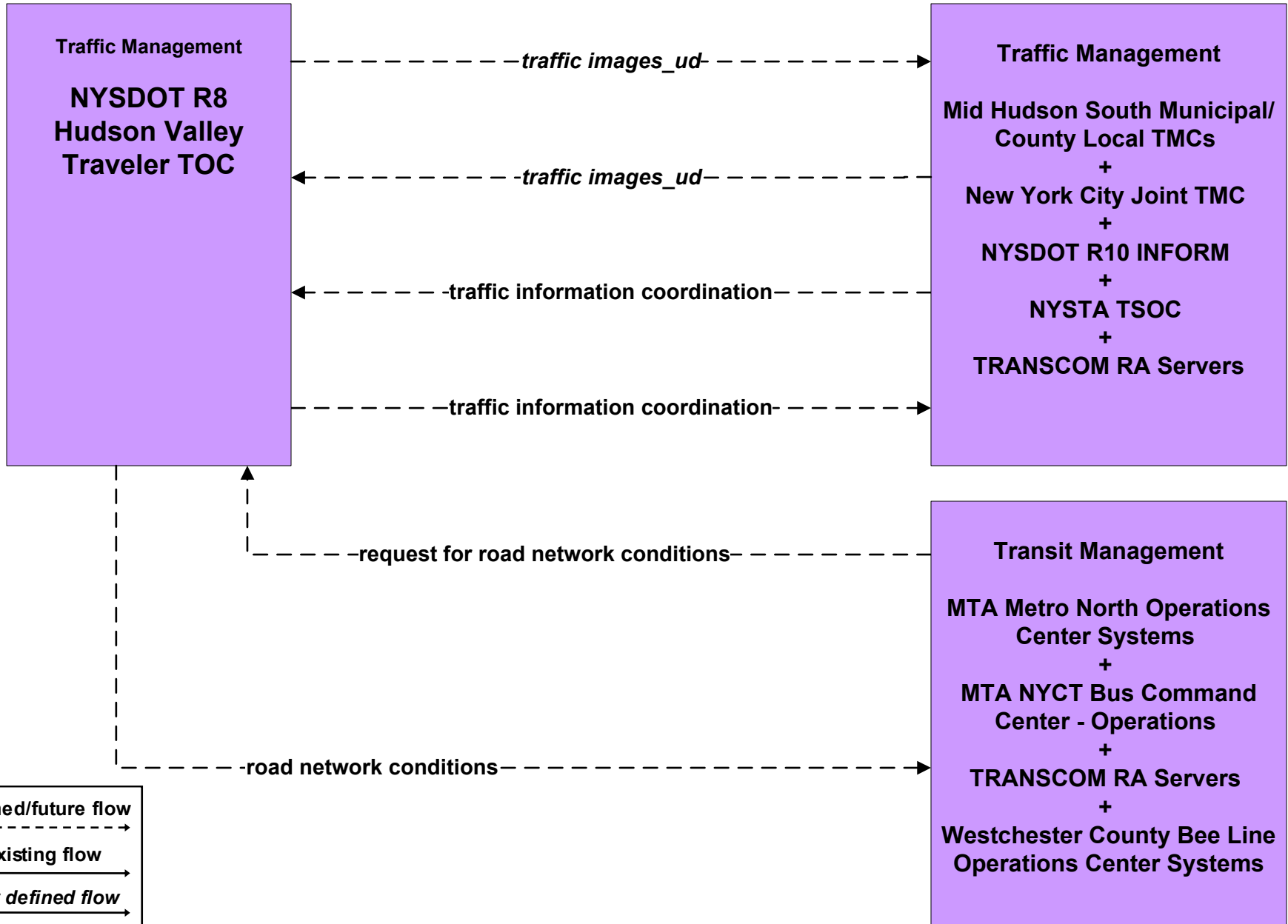
**ATMS06 - Traffic Information Dissemination  
NYSTA TSO**



**ATMS07 - Regional Traffic Control  
Mid Hudson South Municipal/County TMCs**

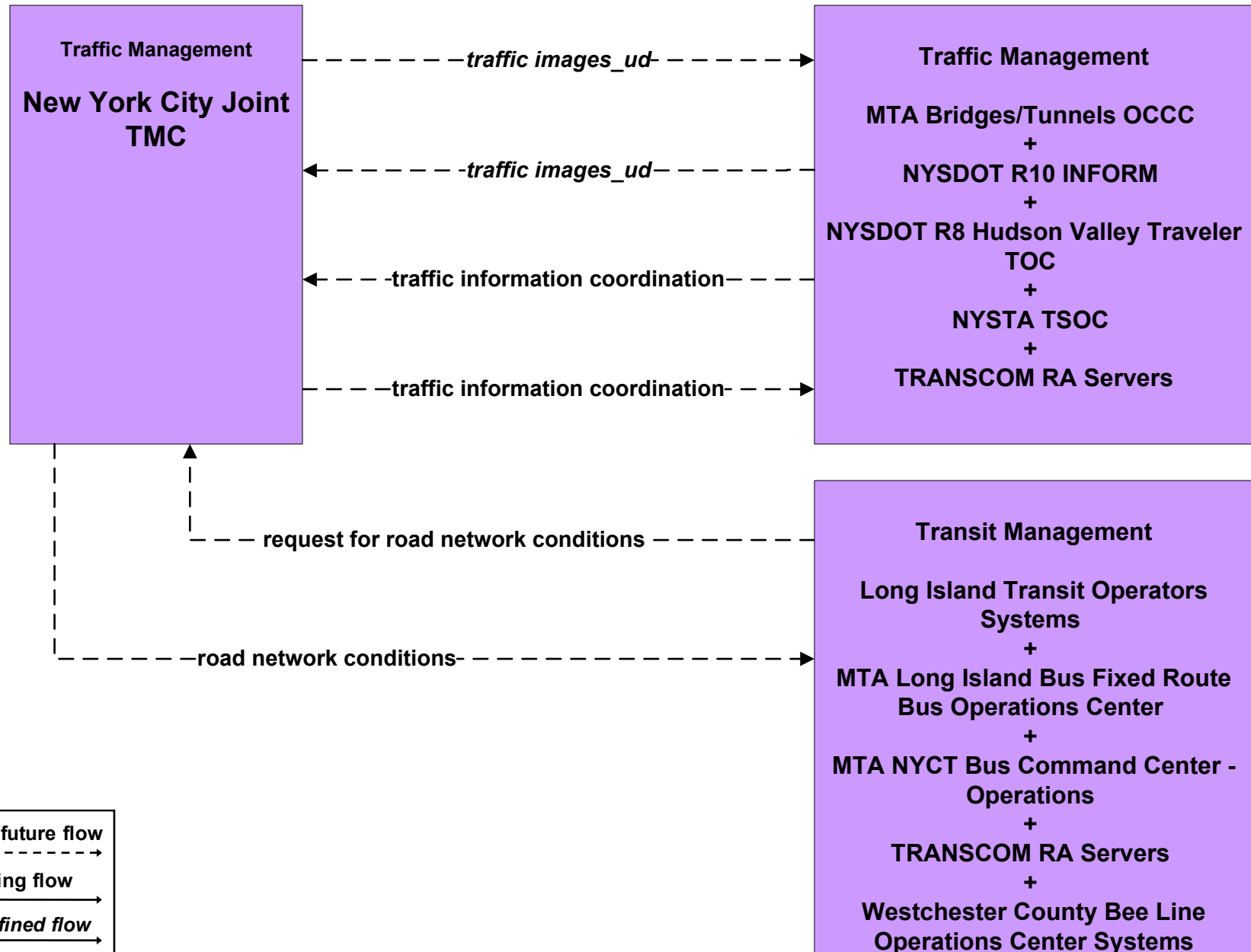


**ATMS07 - Regional Traffic Control  
NYSDOT R8 Hudson Valley TMC**

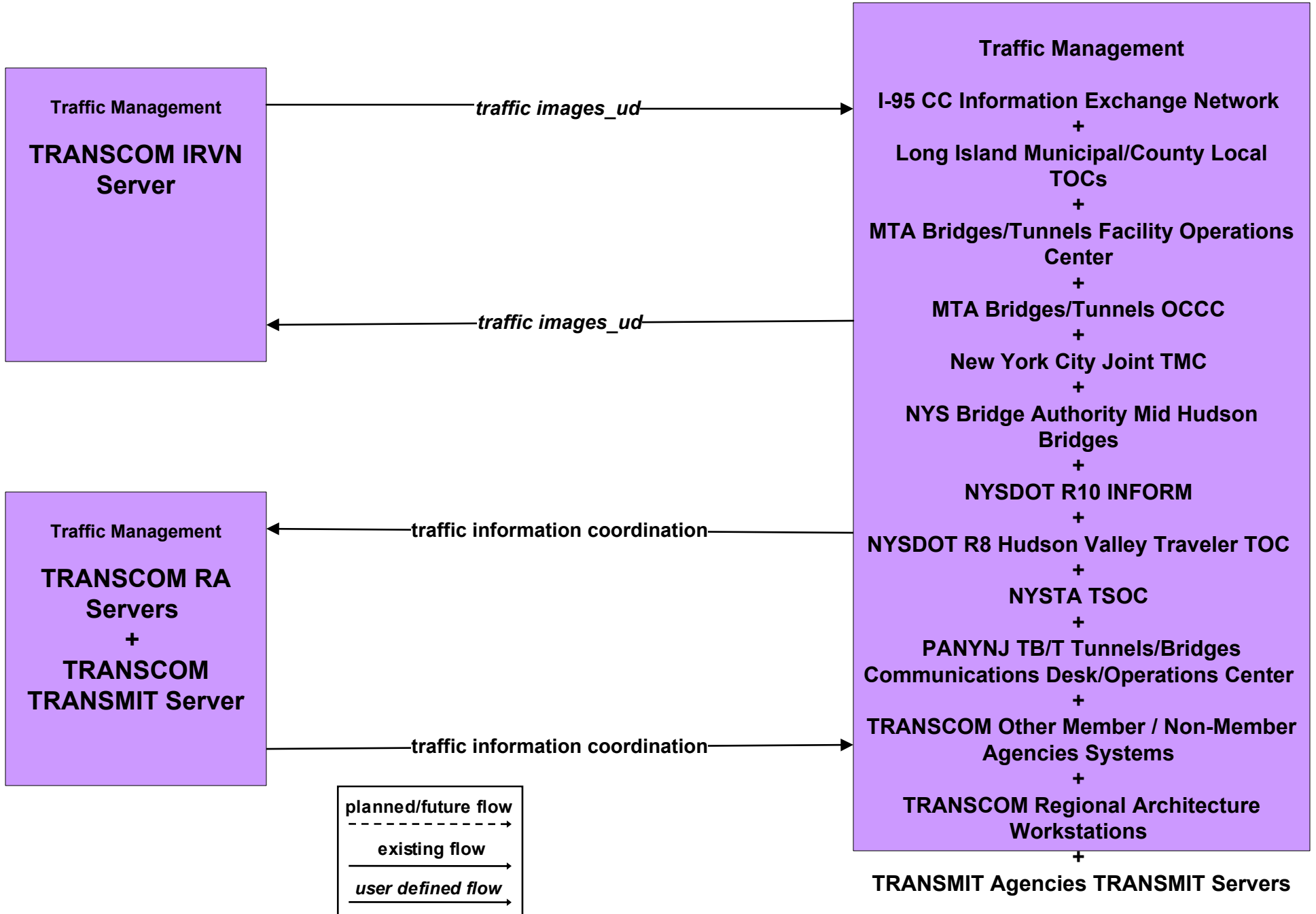




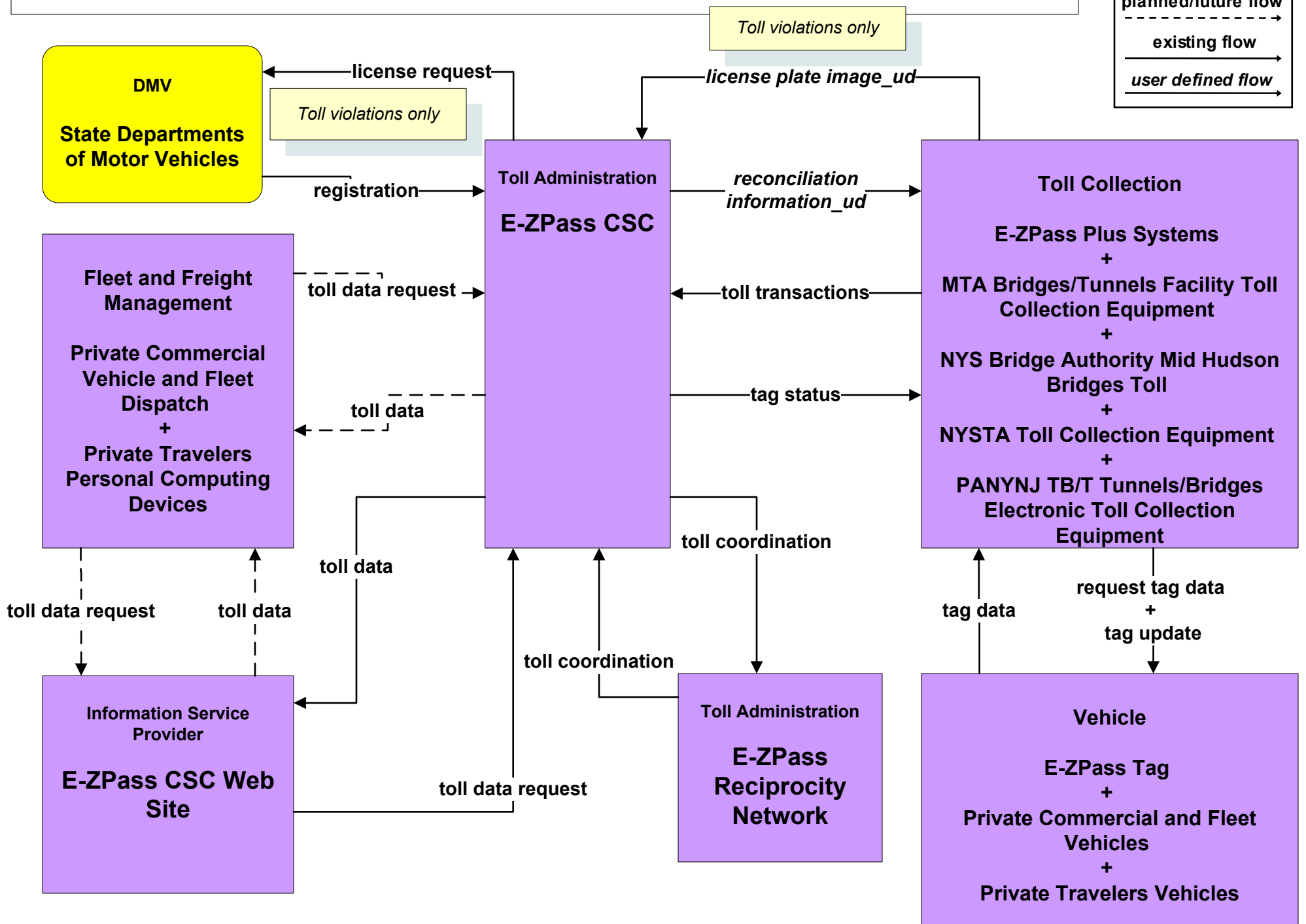
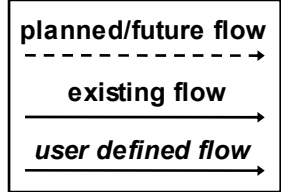
**ATMS07 - Regional Traffic Control  
NYSDOT R11 New York City ATMS**

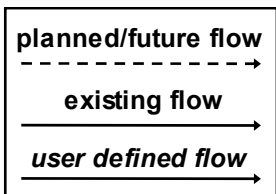
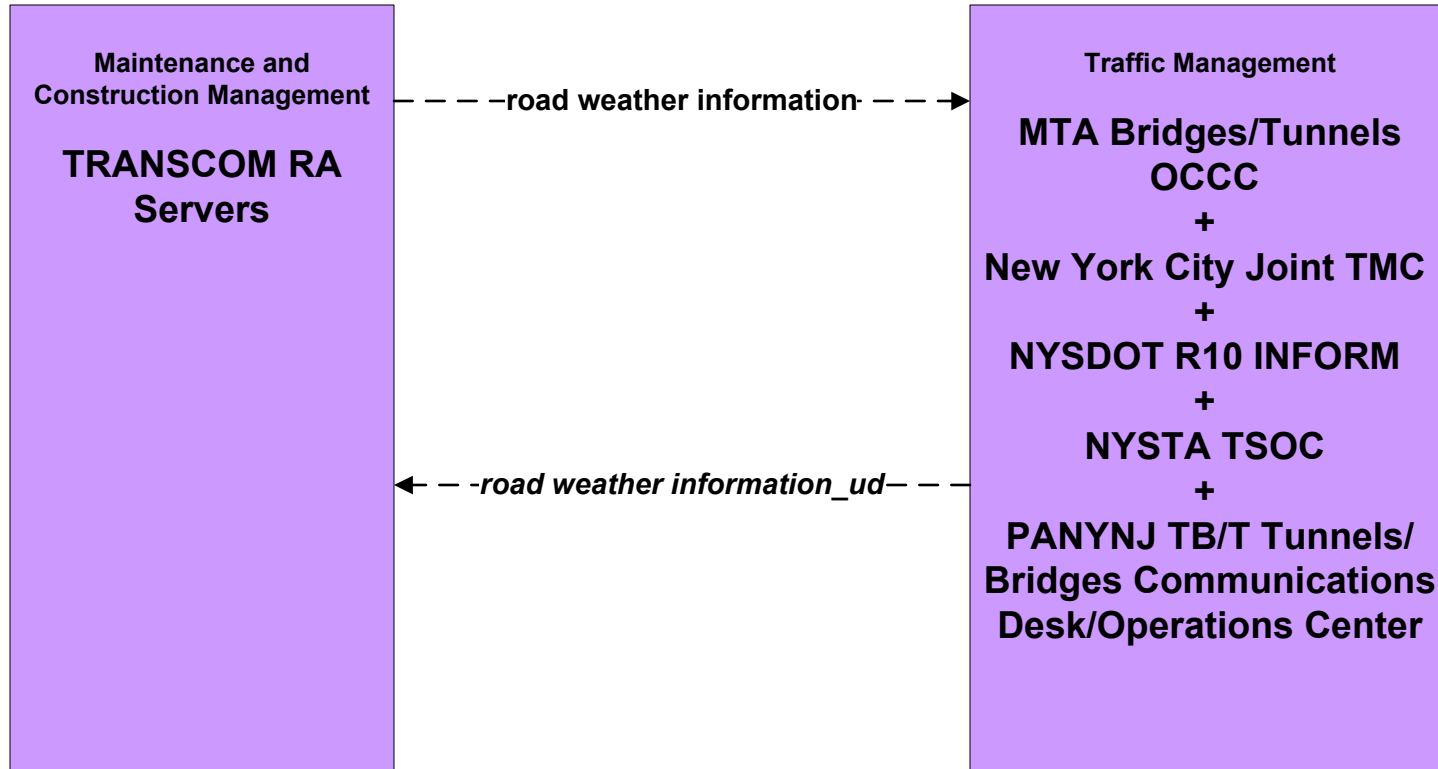


**ATMS07 - Regional Traffic Control  
TRANSCOM Operations Information Center**

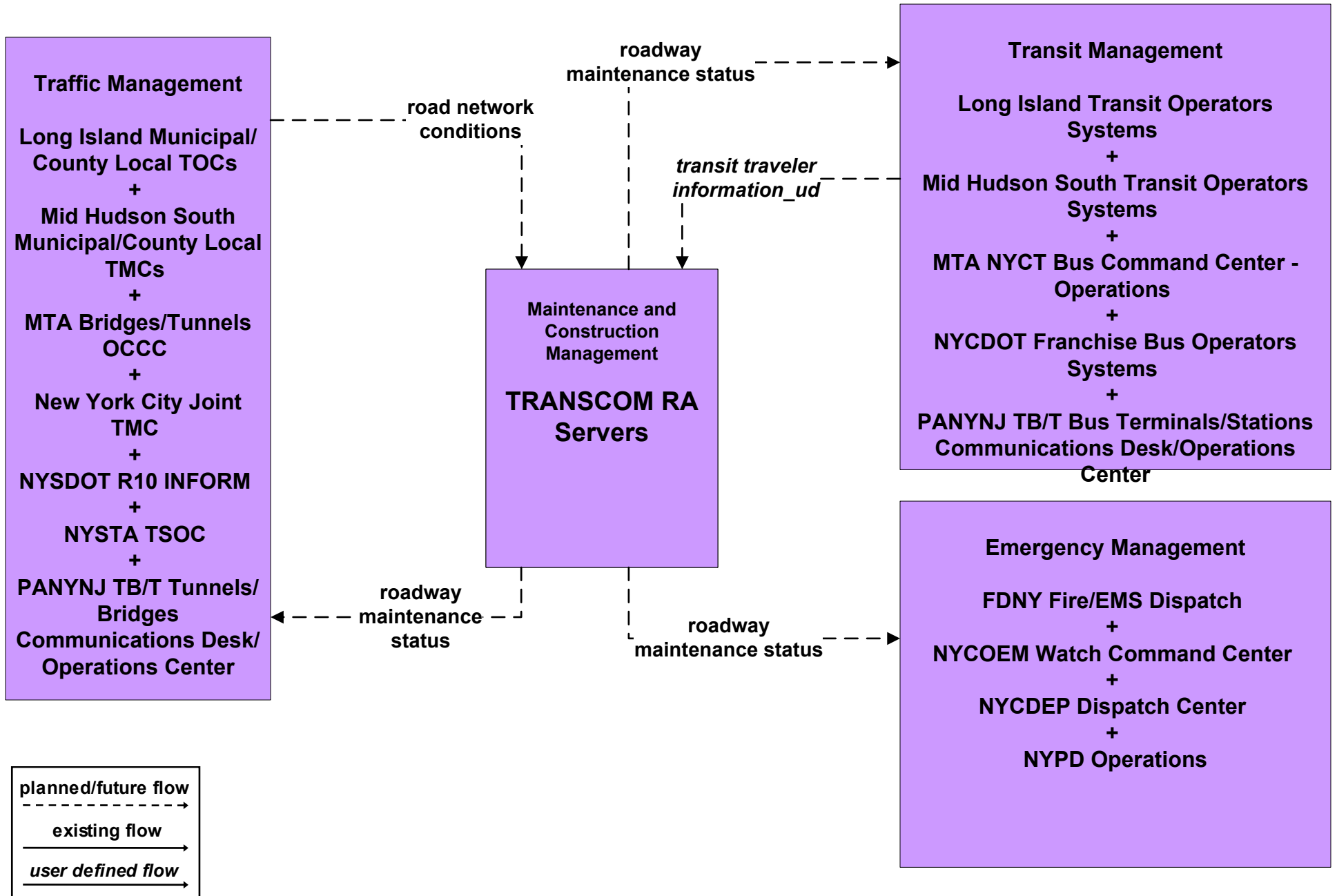


# ATMS10 - Electronic Toll Collection InterAgency Group (IAG)

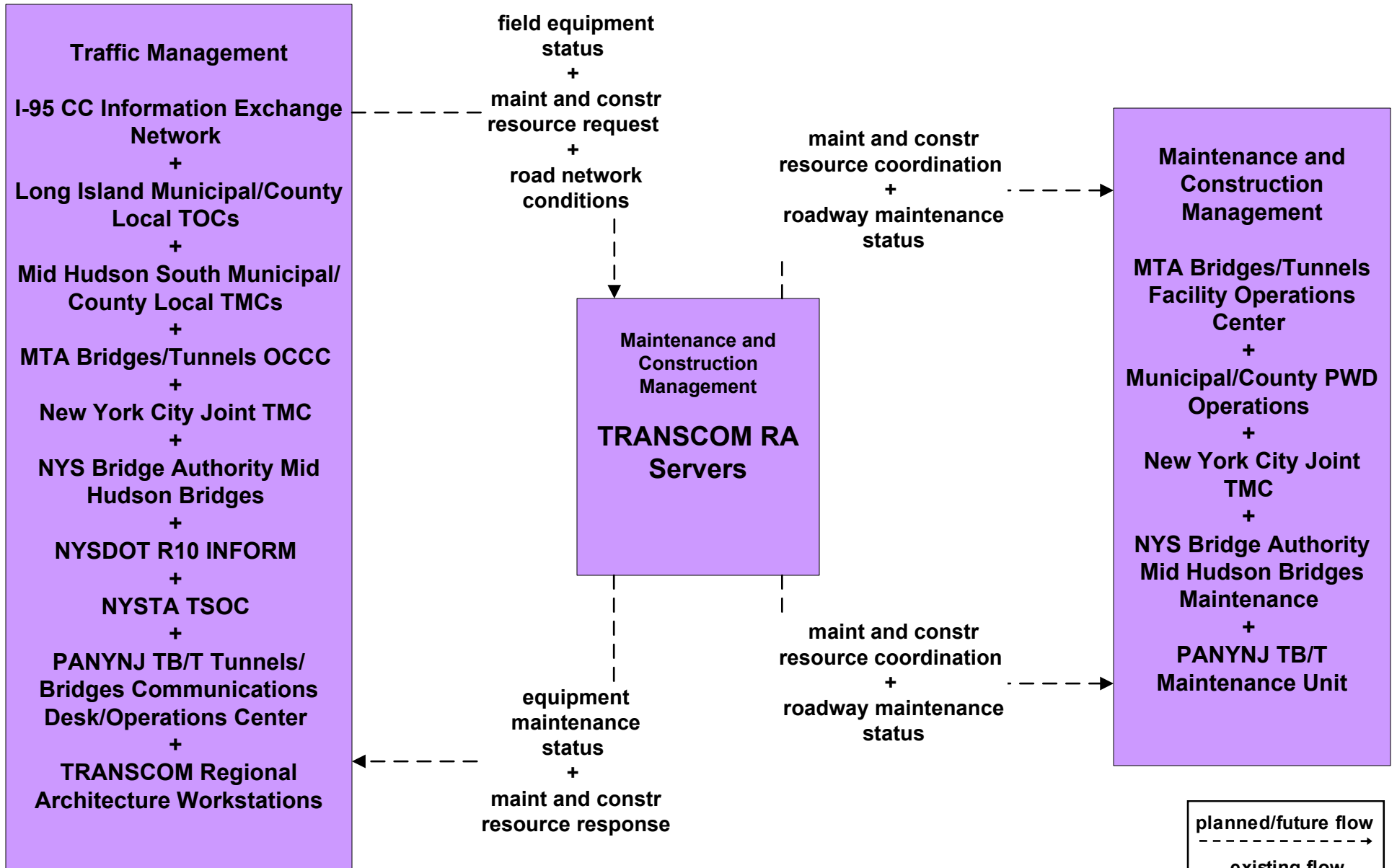




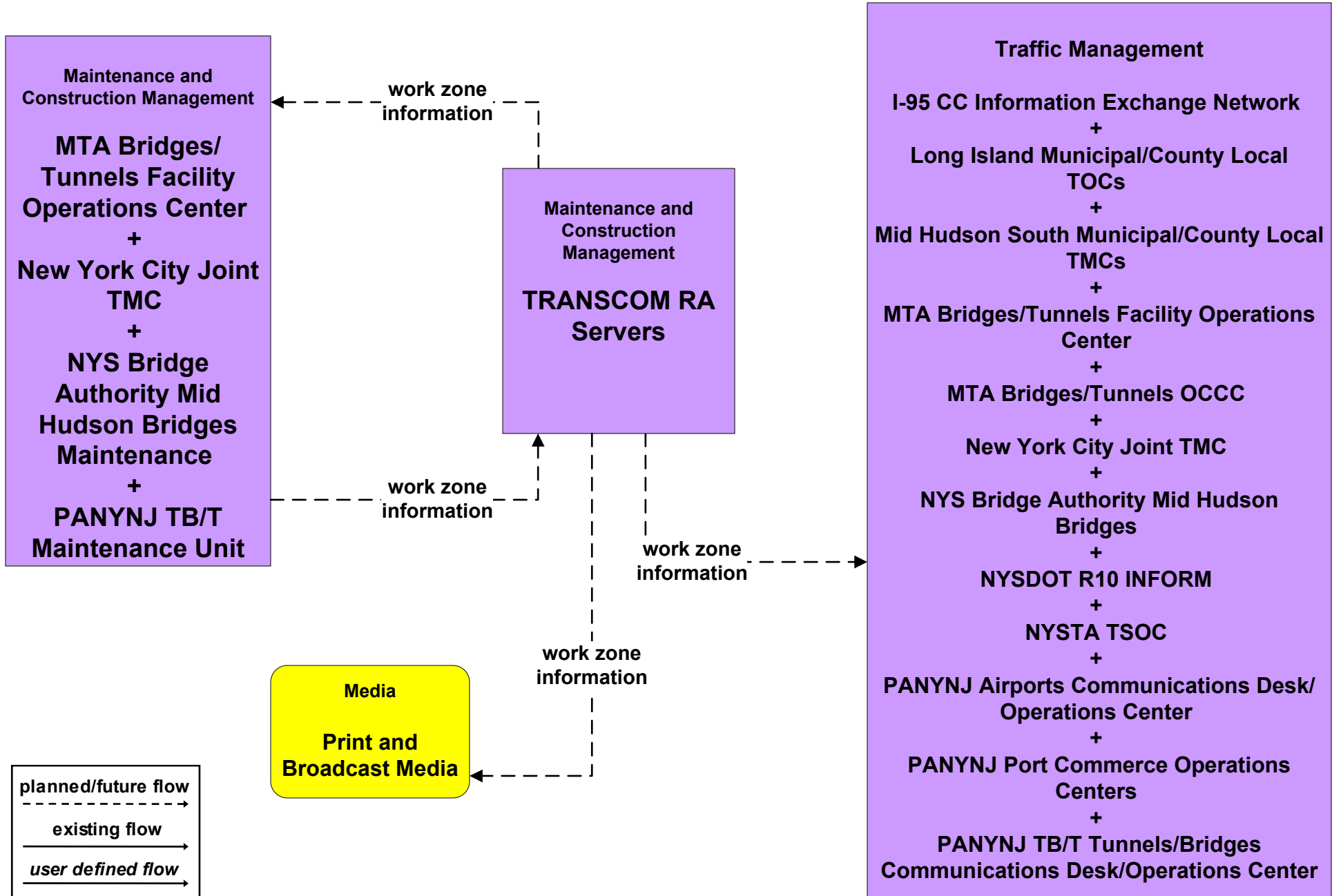
# MC06 - Winter Maintenance TRANSCOM



# MC07 - Roadway Maintenance and Construction TRANSCOM



# MC08 - Workzone Management TRANSCOM



# MC10 - Maintenance and Construction Activity Coordination TRANSCOM

