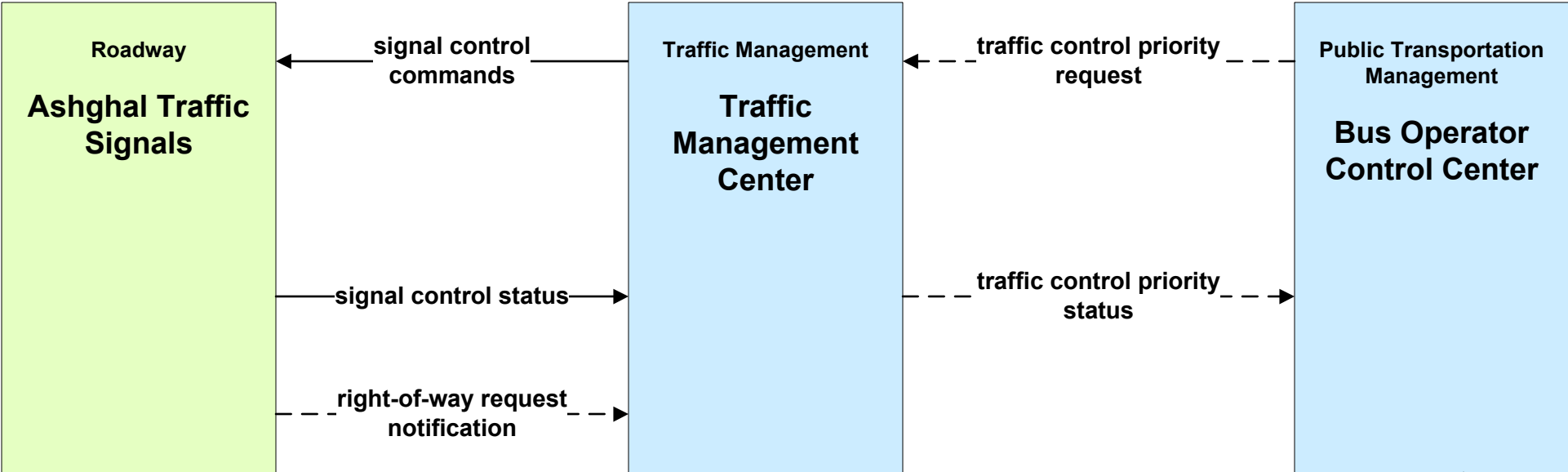
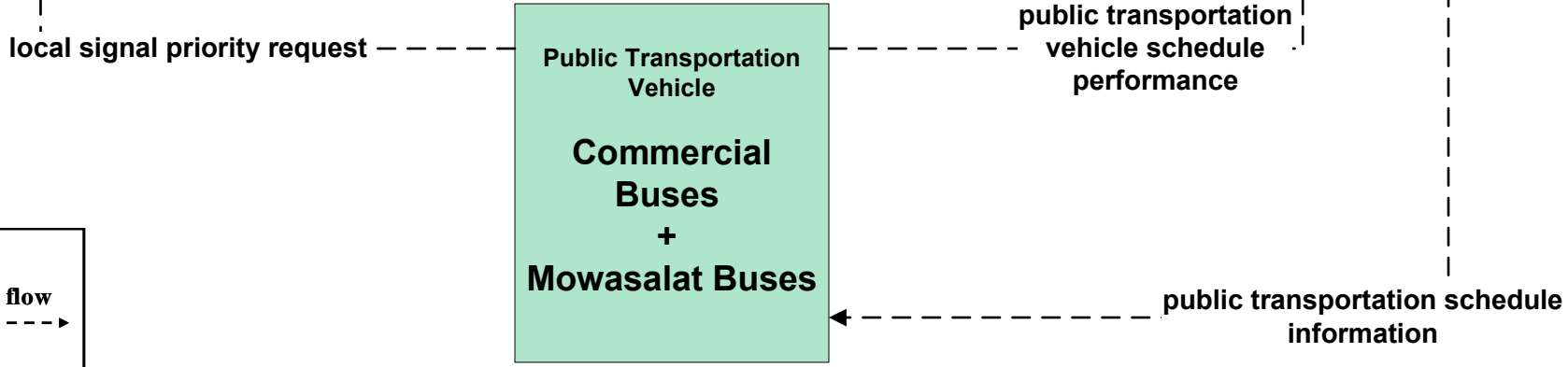


# APTS09 - Public Transportation Signal Priority Mowasalat Buses



*Need to determine if signal priority will be DSRC or C2C.*

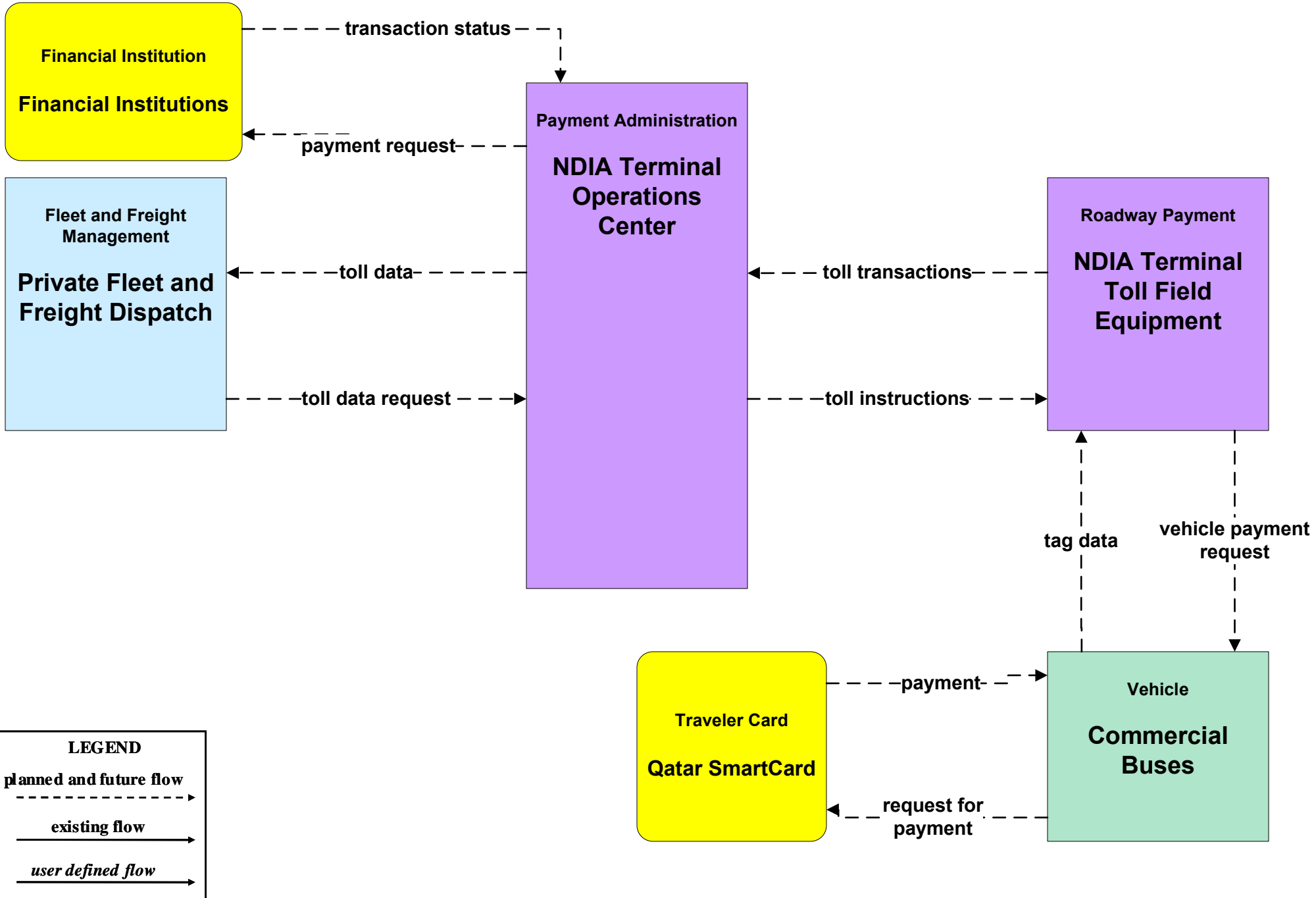


**LEGEND**

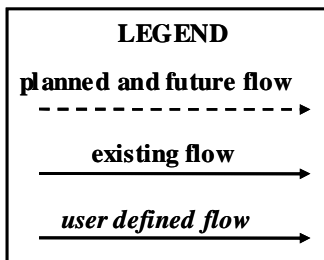
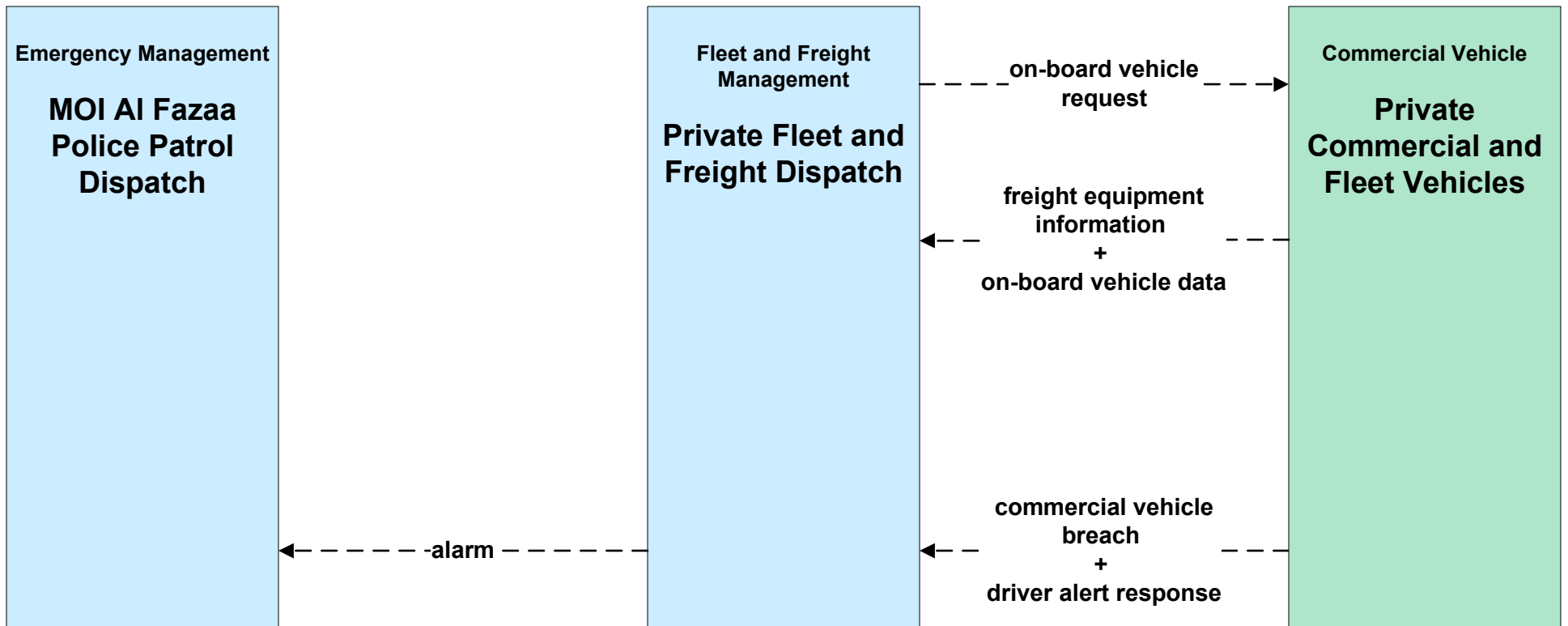
- planned and future flow*  →
- existing flow*  →
- user defined flow*  →

# ATMS10 - Electronic Toll Collection

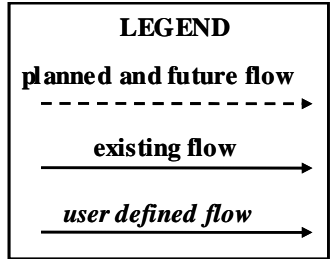
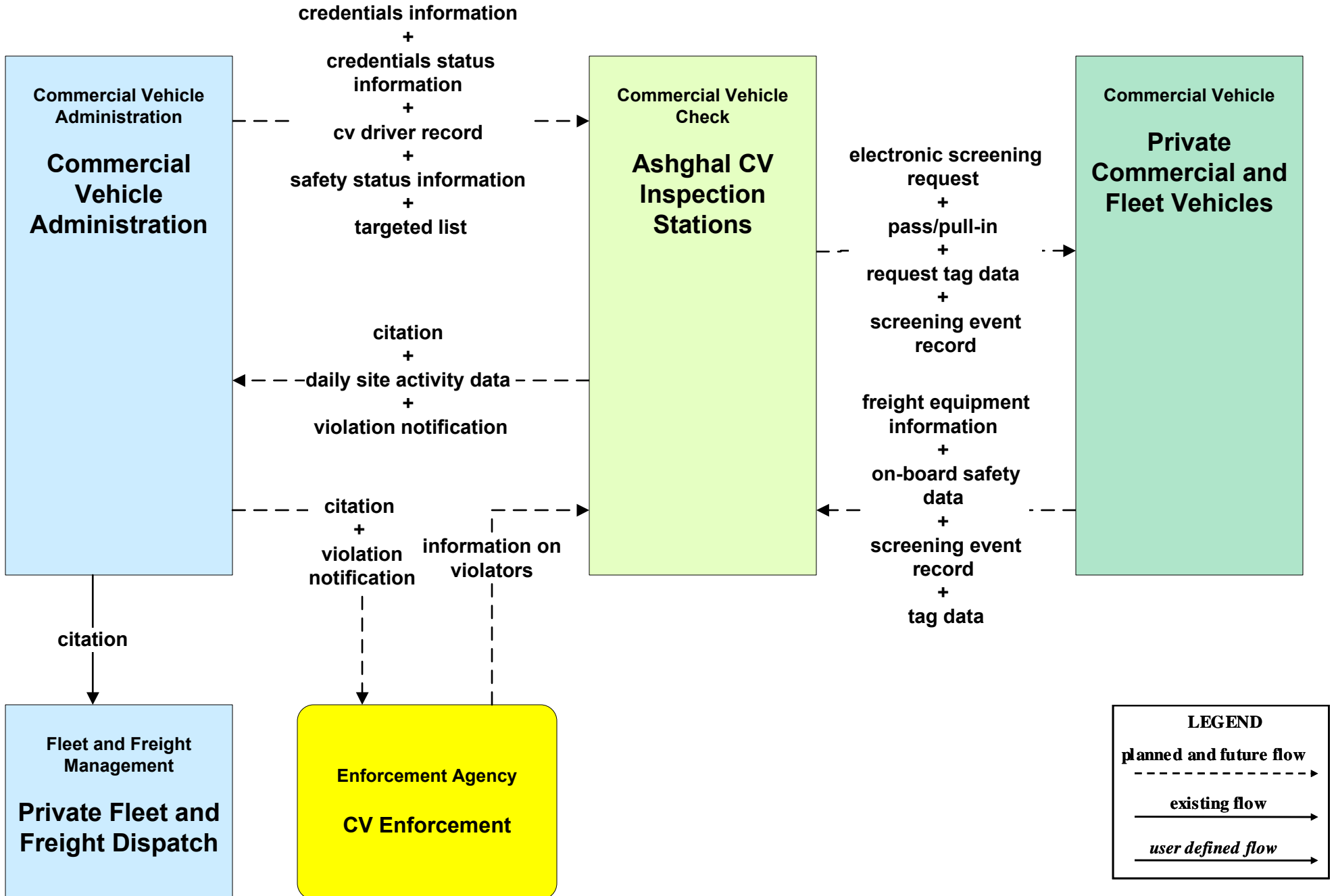
## NDIA Land-Side Congestion Management Operations



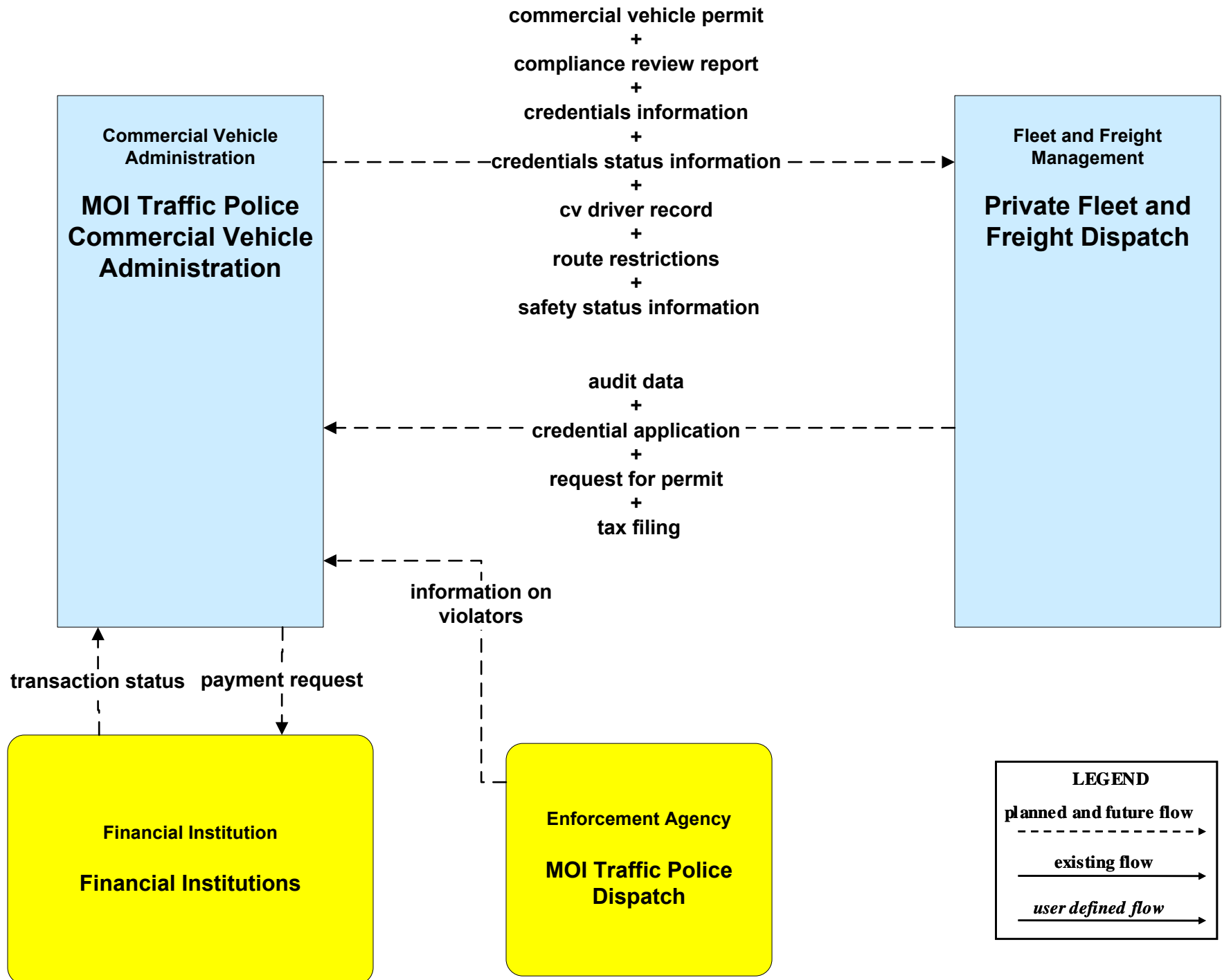
# CVO02 – Freight Administration



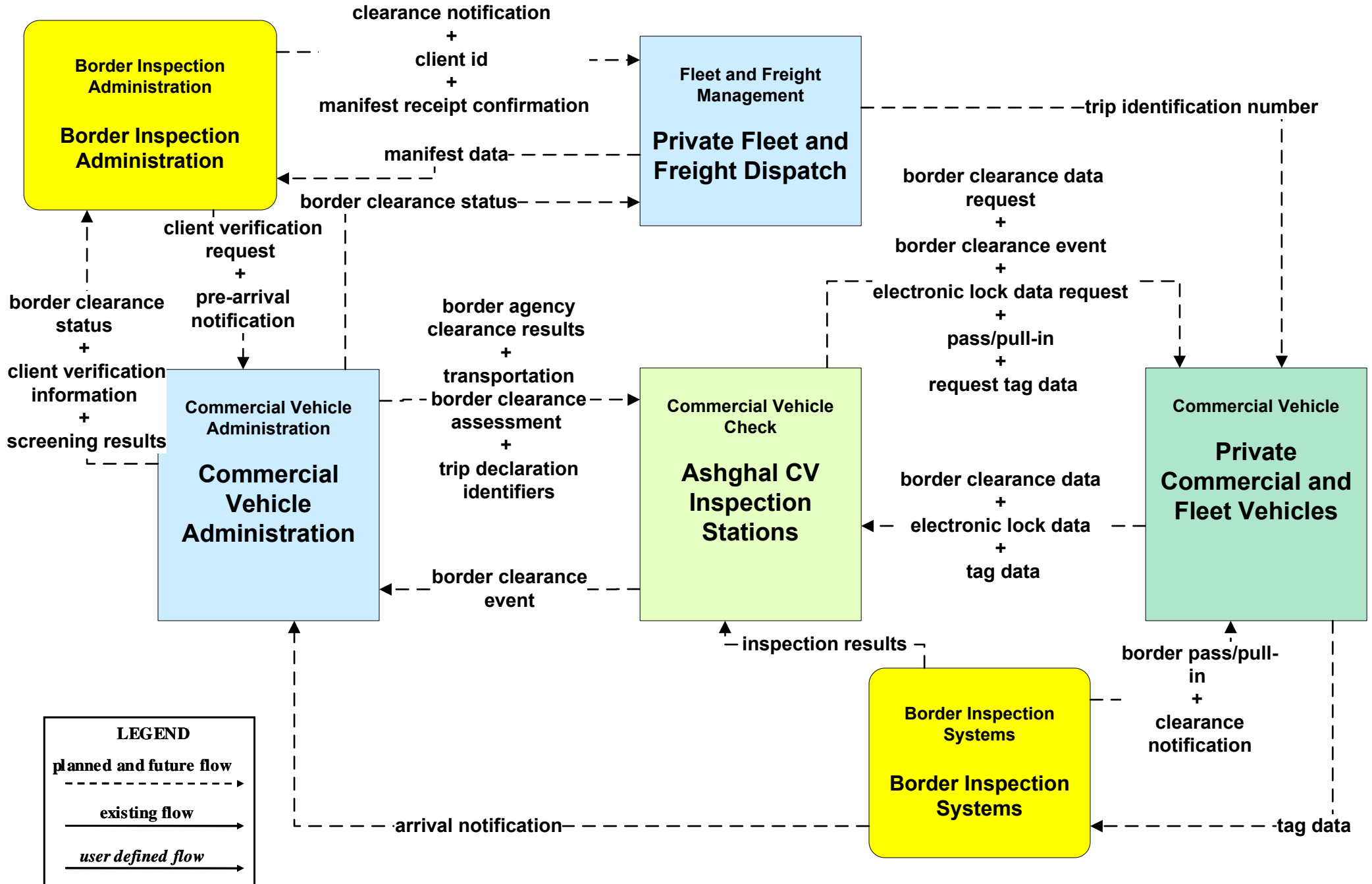
# CVO03 - Electronic Clearance



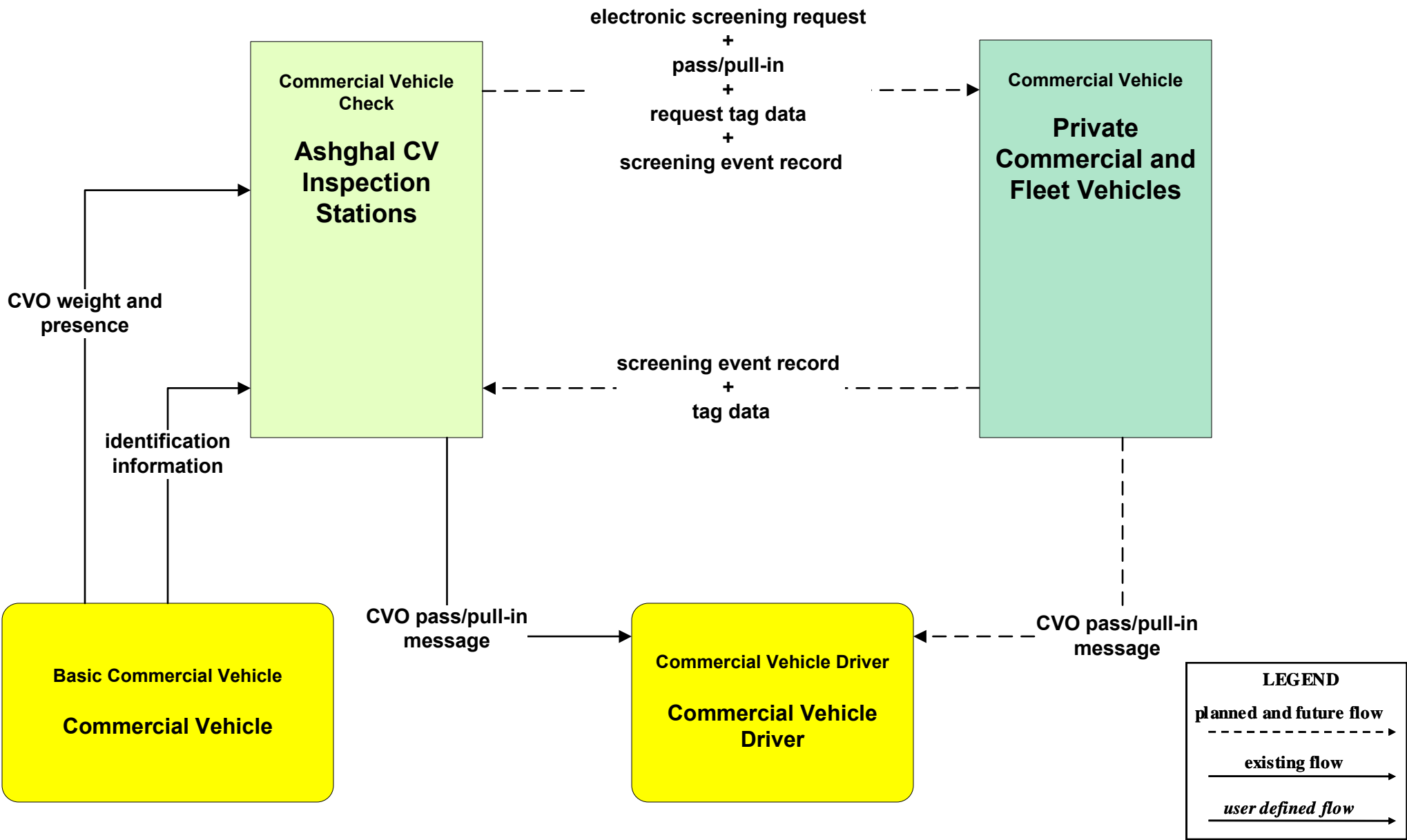
# CVO04 - CV Administrative Process



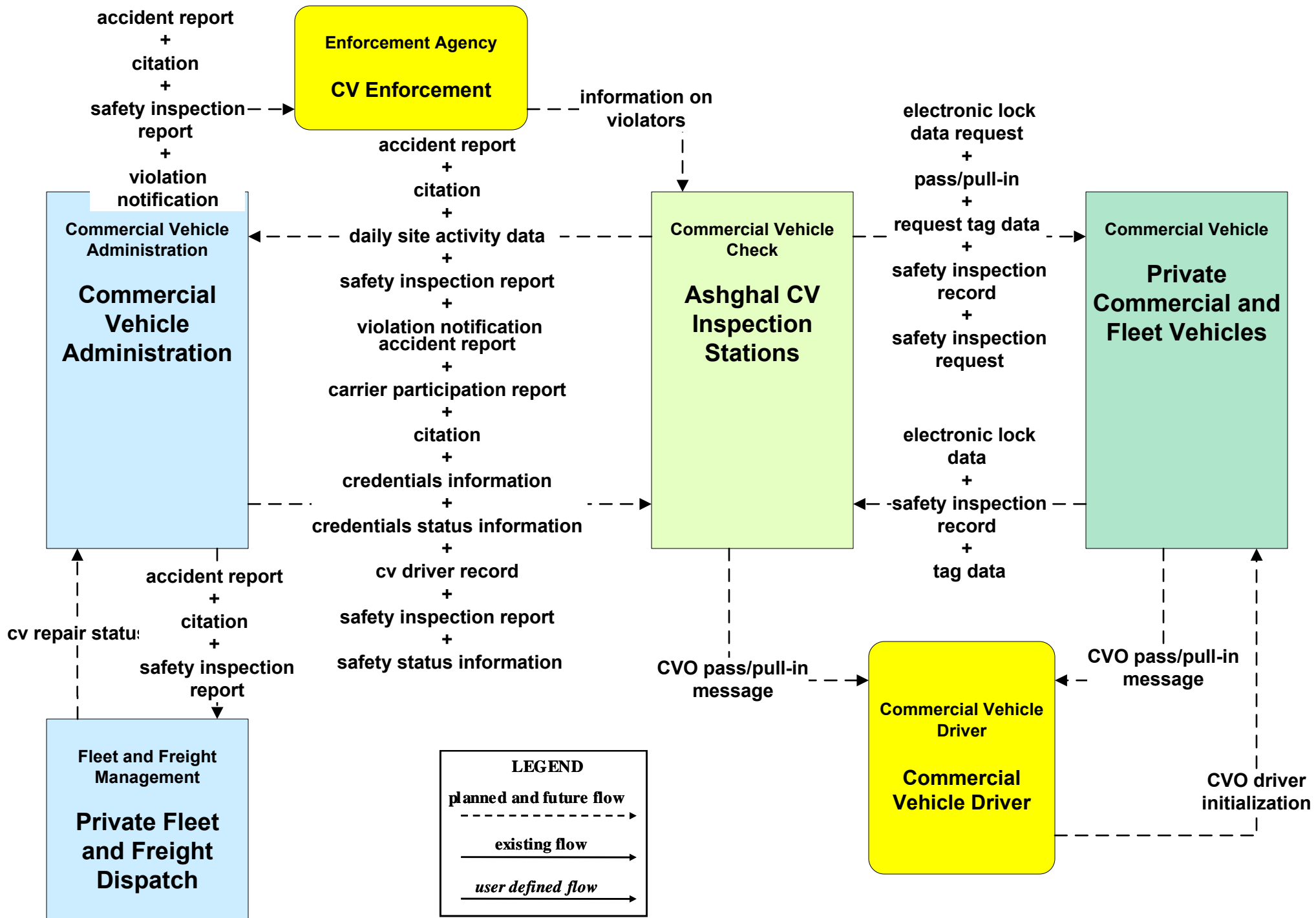
# CVO05 - International Electronic Border Clearance



# CVO06 - Weigh-In-Motion

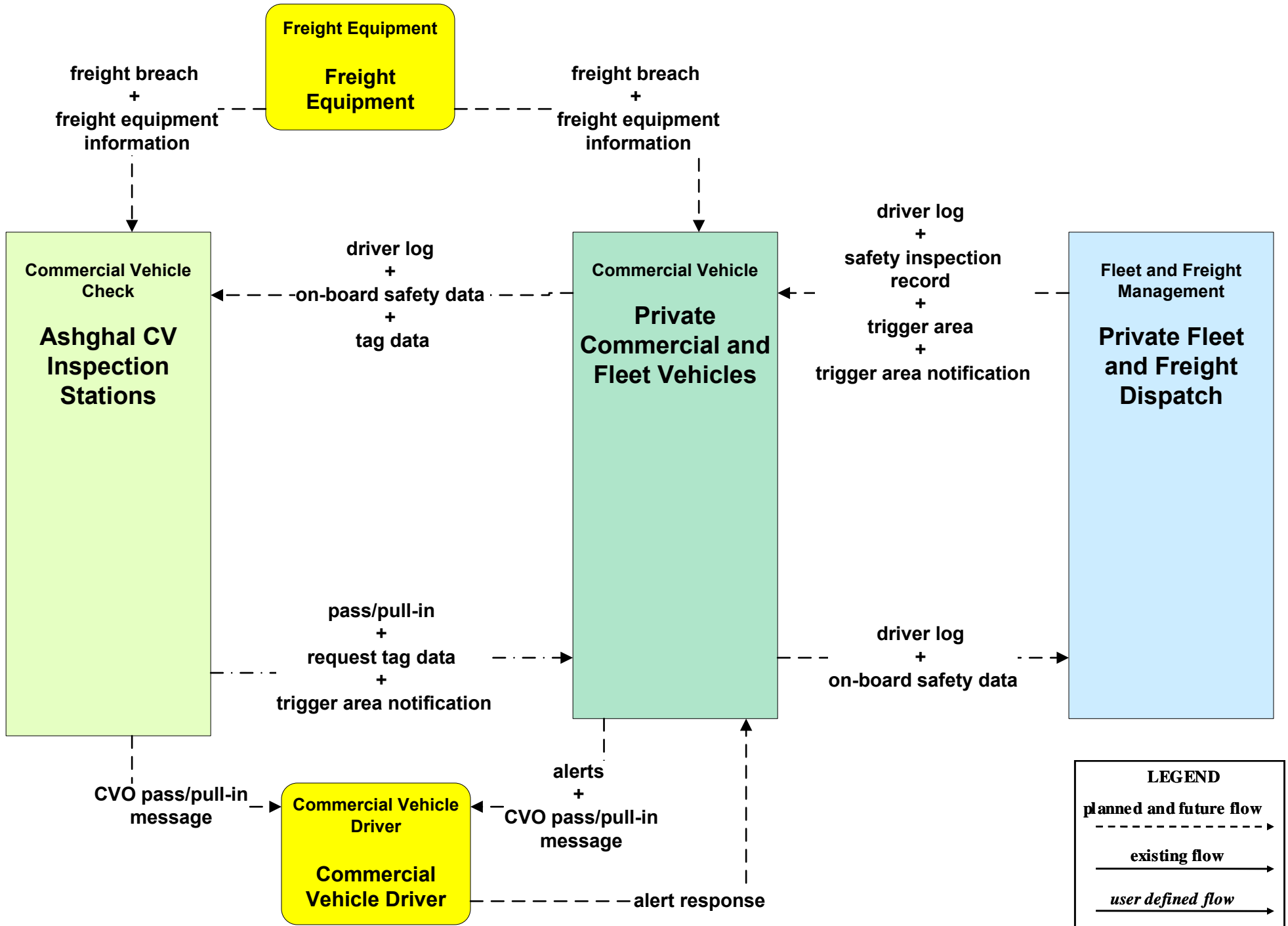


# CVO07 – Roadside CVO Safety

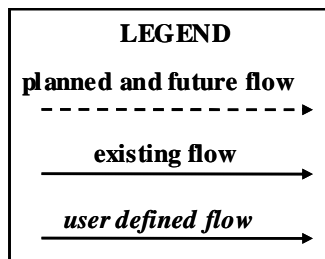
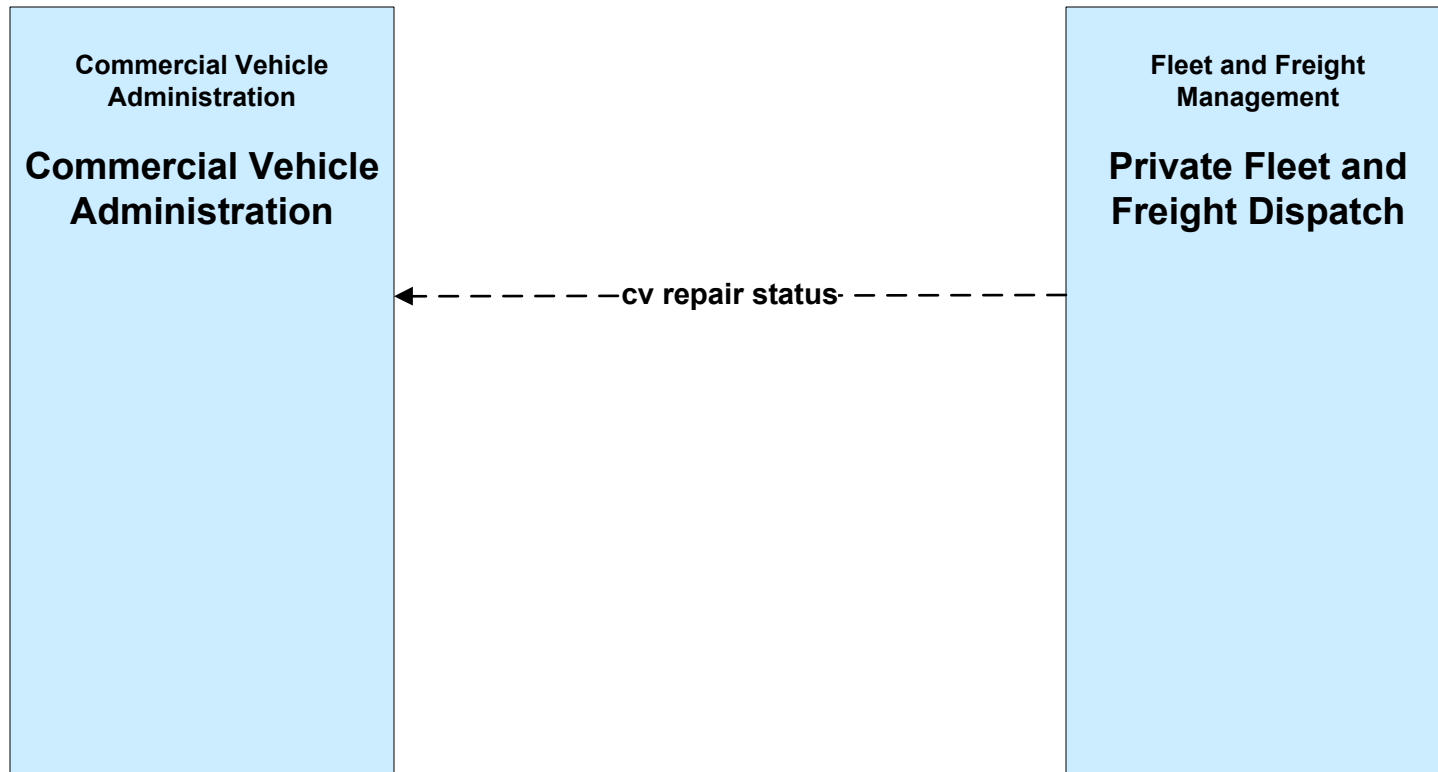




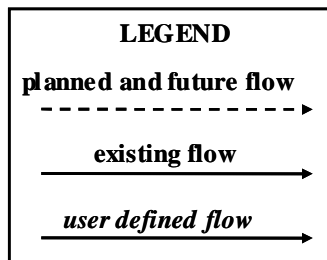
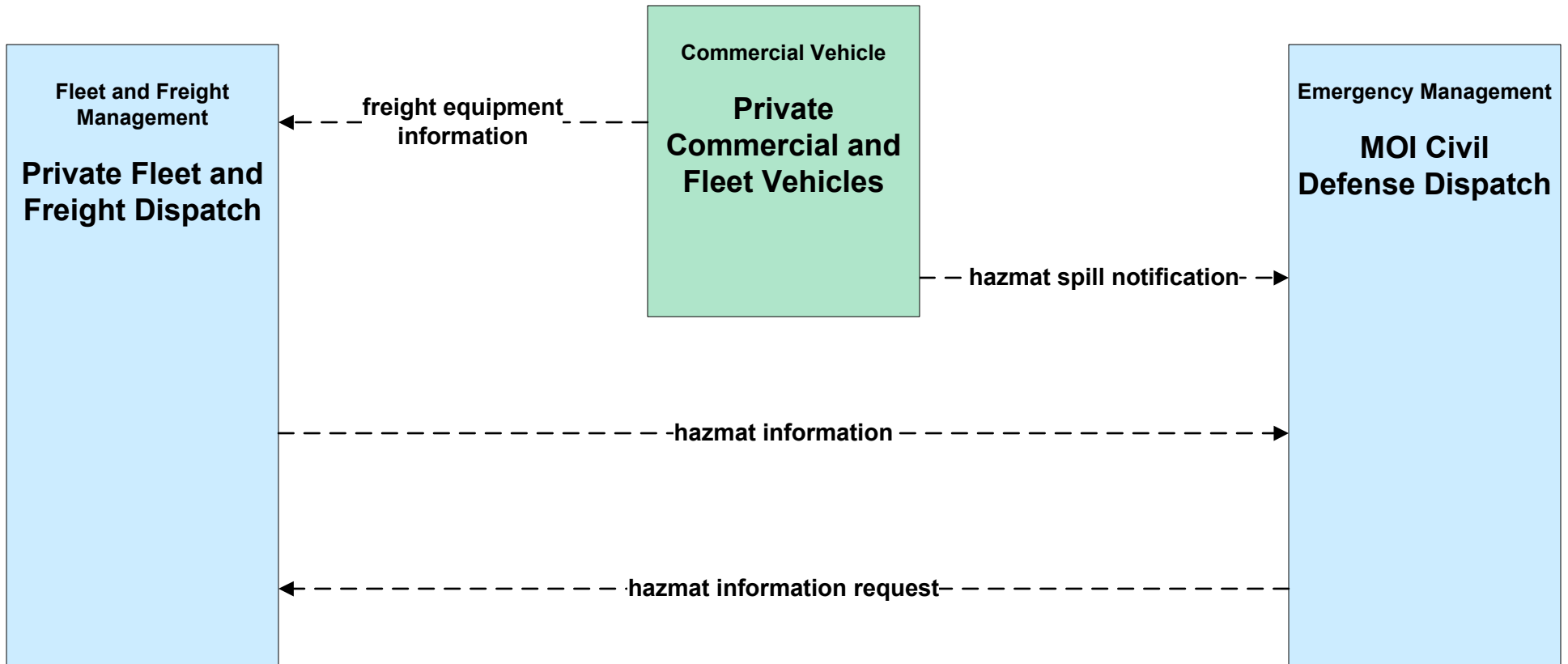
# CVO08 - On-board CVO Safety



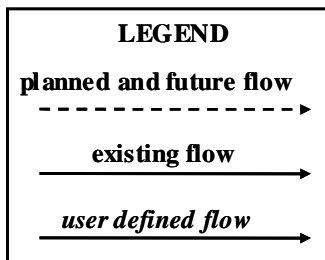
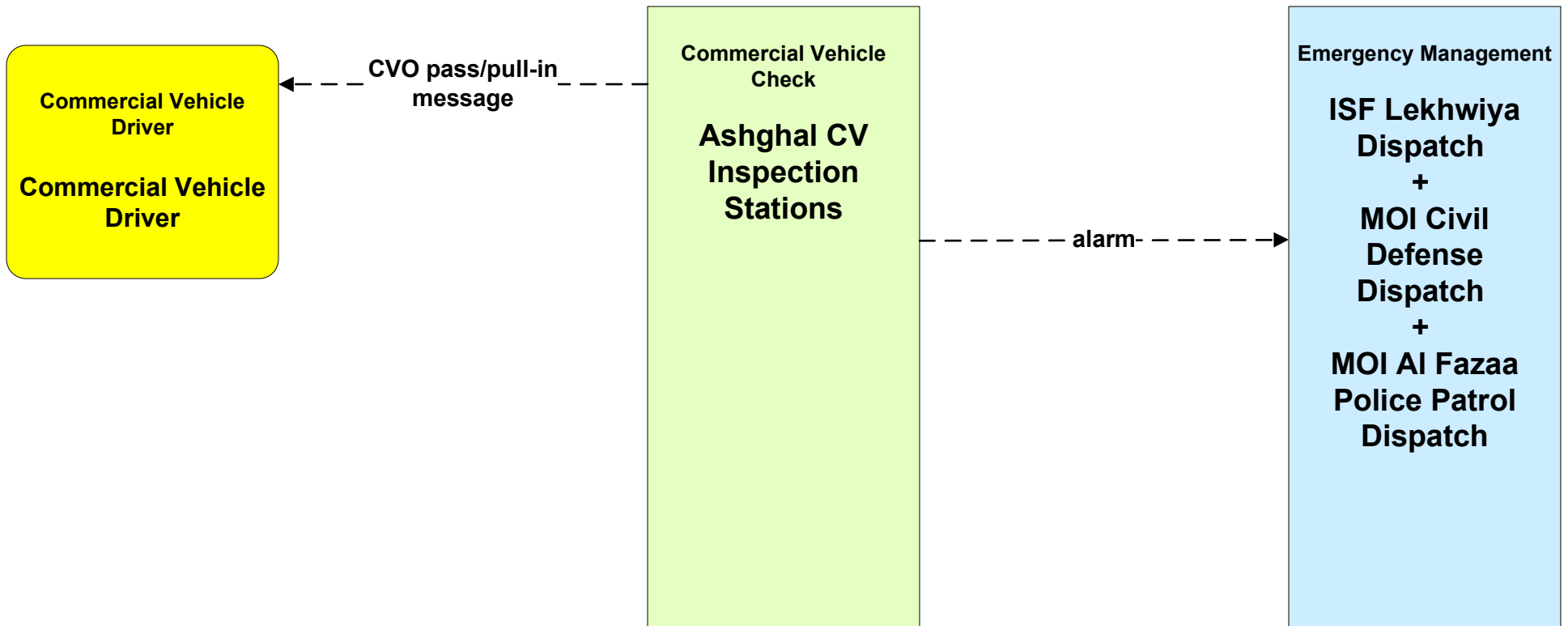
# CVO09 – CVO Fleet Maintenance



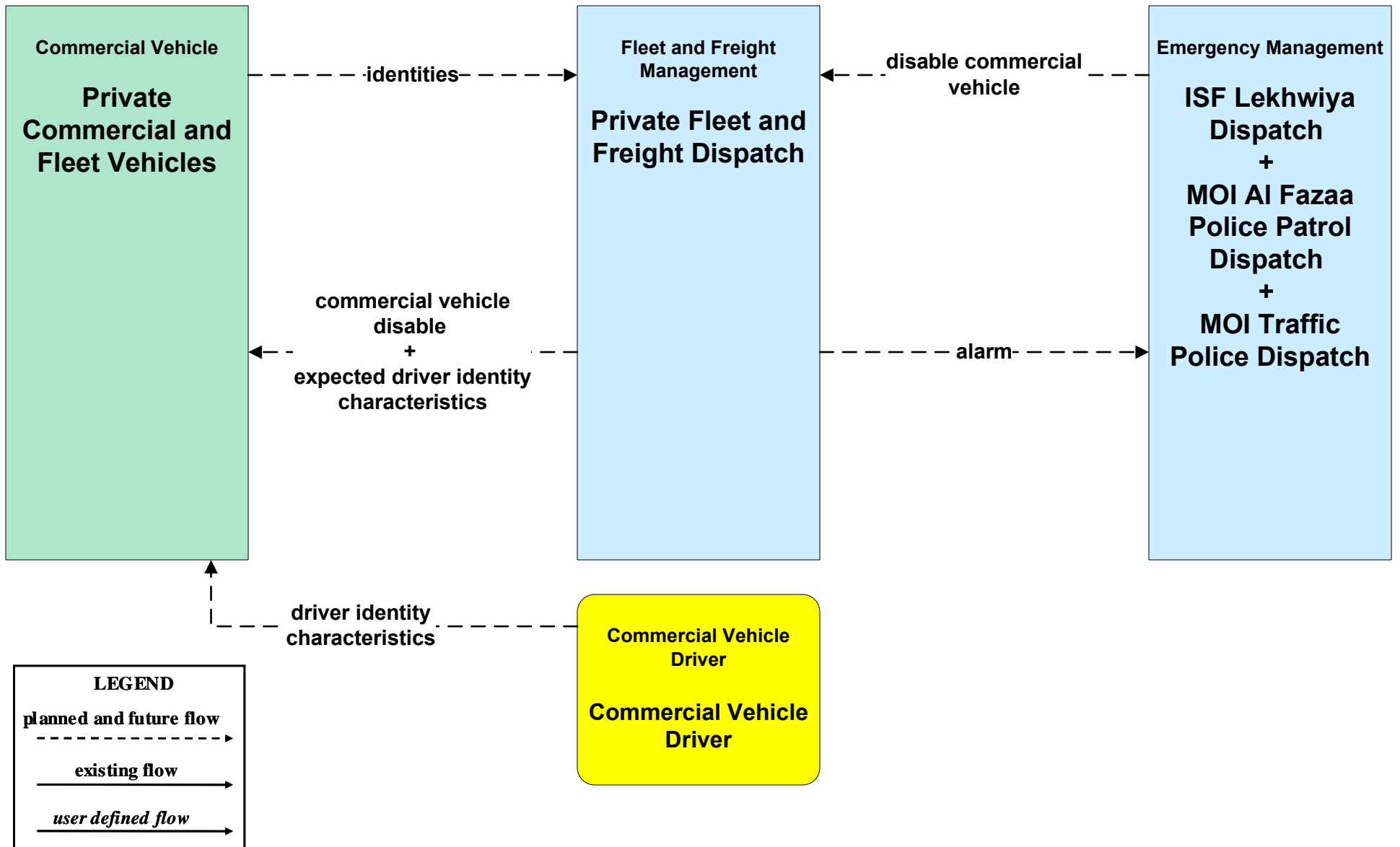
# CVO10 - HAZMAT Management



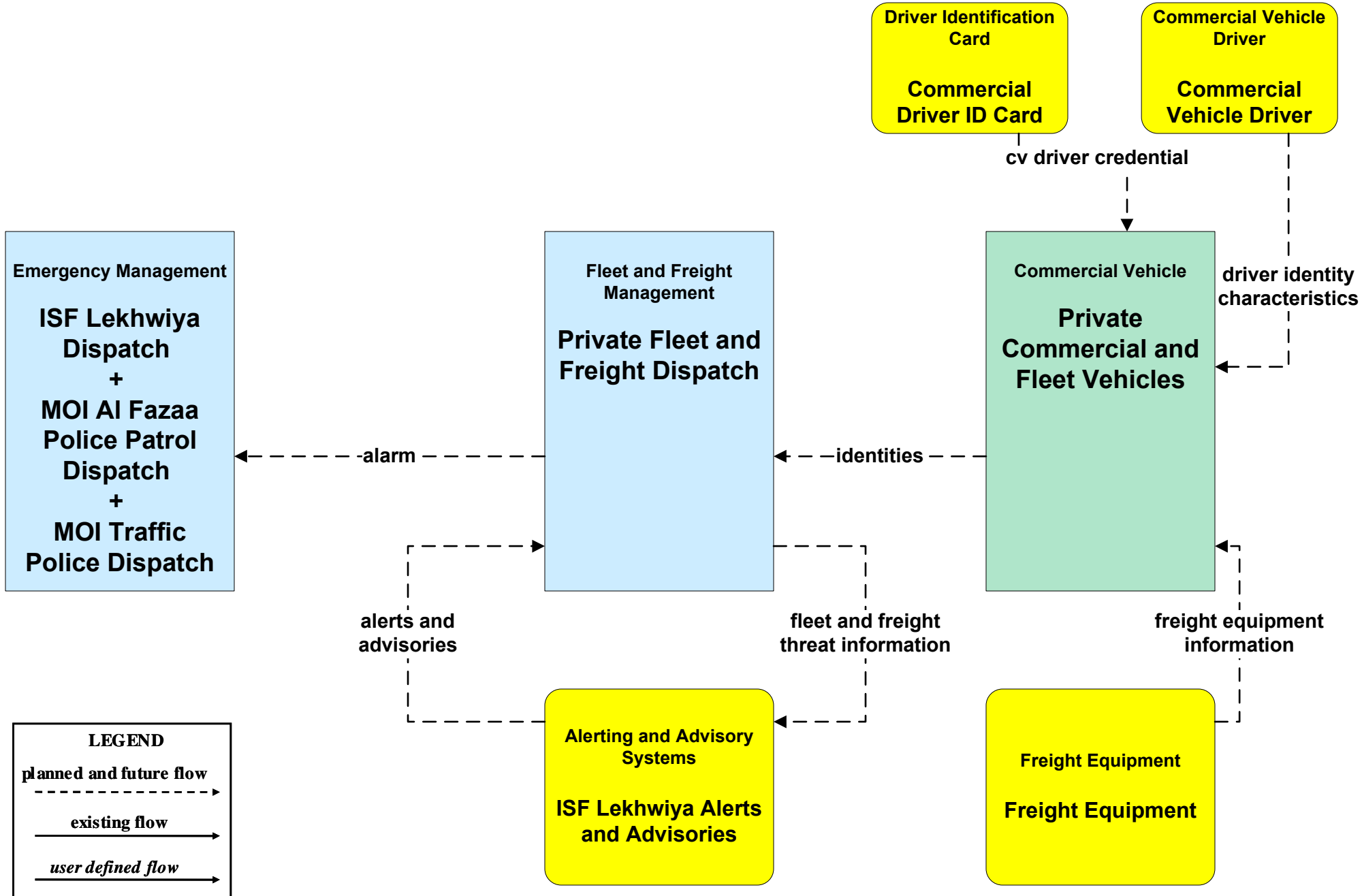
# CVO11 - Roadside HAZMAT Security Detection and Mitigation



# CVO12 - CV Driver Security Authentication



# CVO13 - Freight Assignment Tracking Security



# CVO13 - Freight Assignment Tracking Logistics

*freight transportation status (CVO02):*

*A time-stamped status of a freight shipment as it passes through the supply chain from manufacturer through arrival at its final destination; including cargo movement logs, routing information, and cargo ID's.*

*booking status (CVO13):*

*Status of the freight transport booking that includes the identities of the Commercial Vehicle and driver who will pick-up the freight or a request for more information from the originator.*

