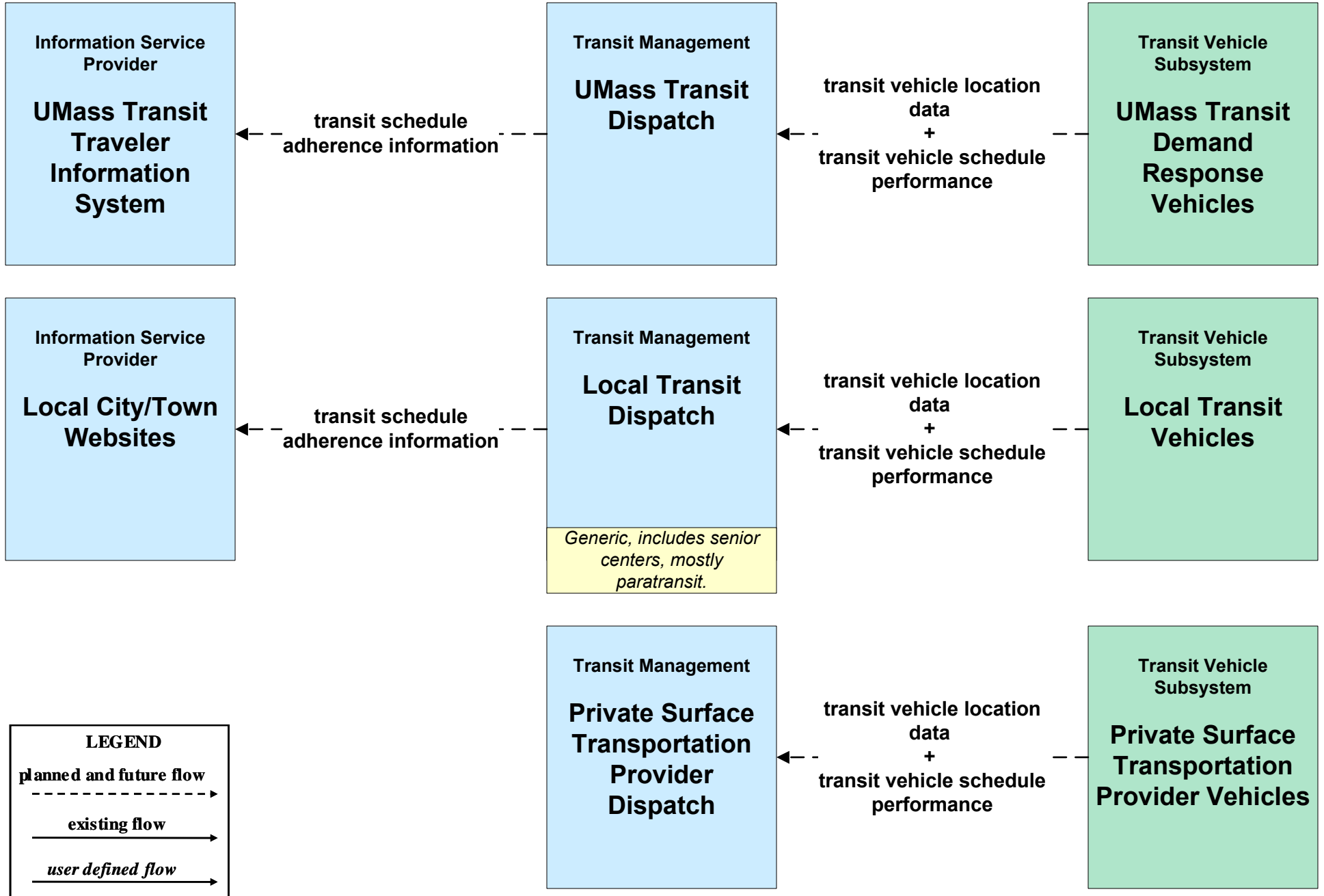
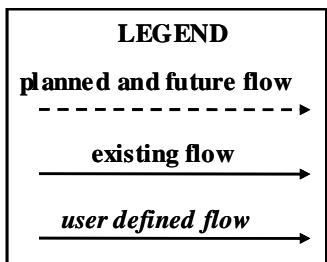
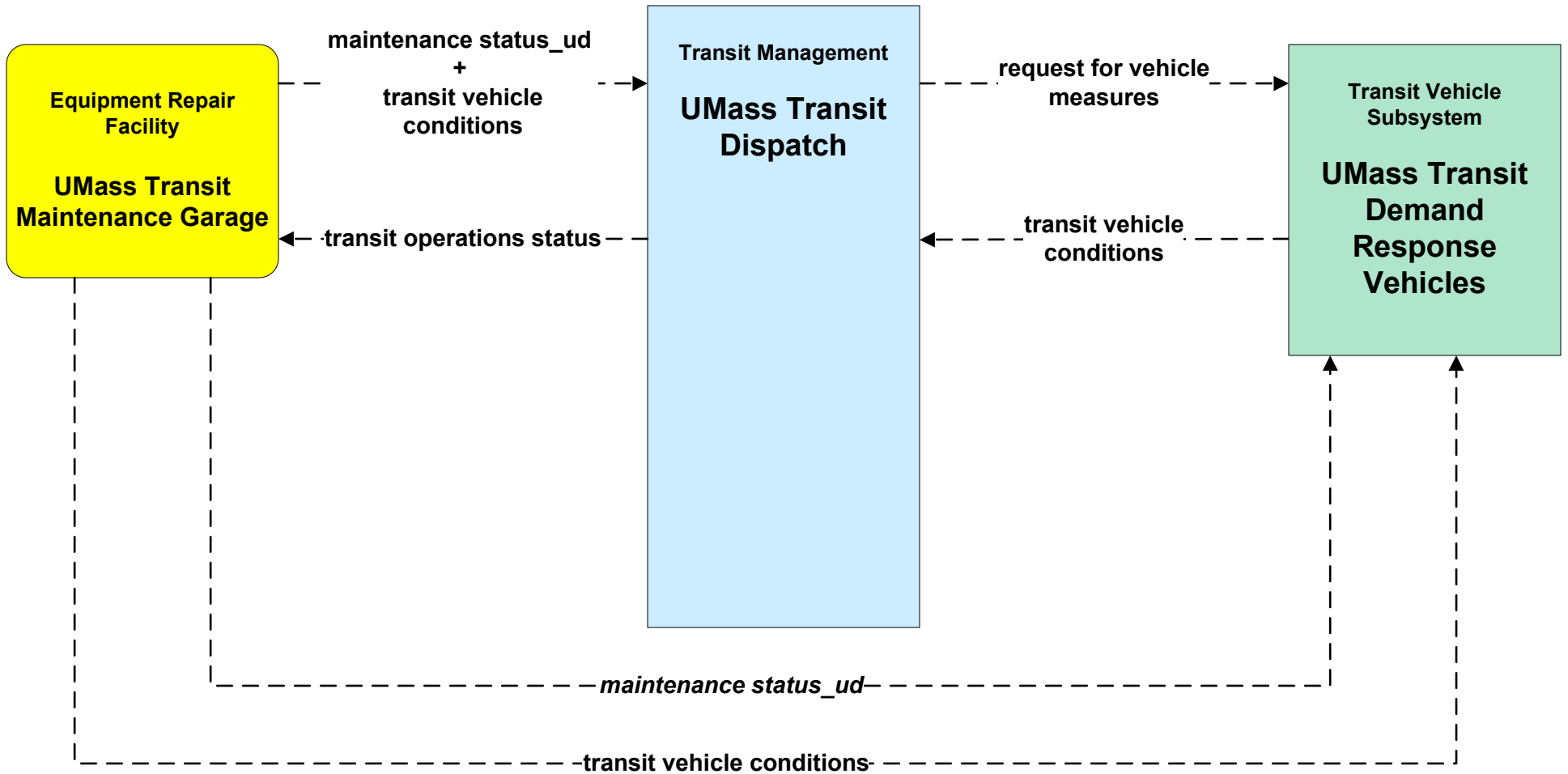


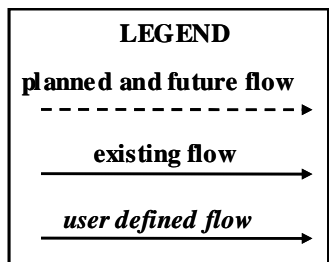
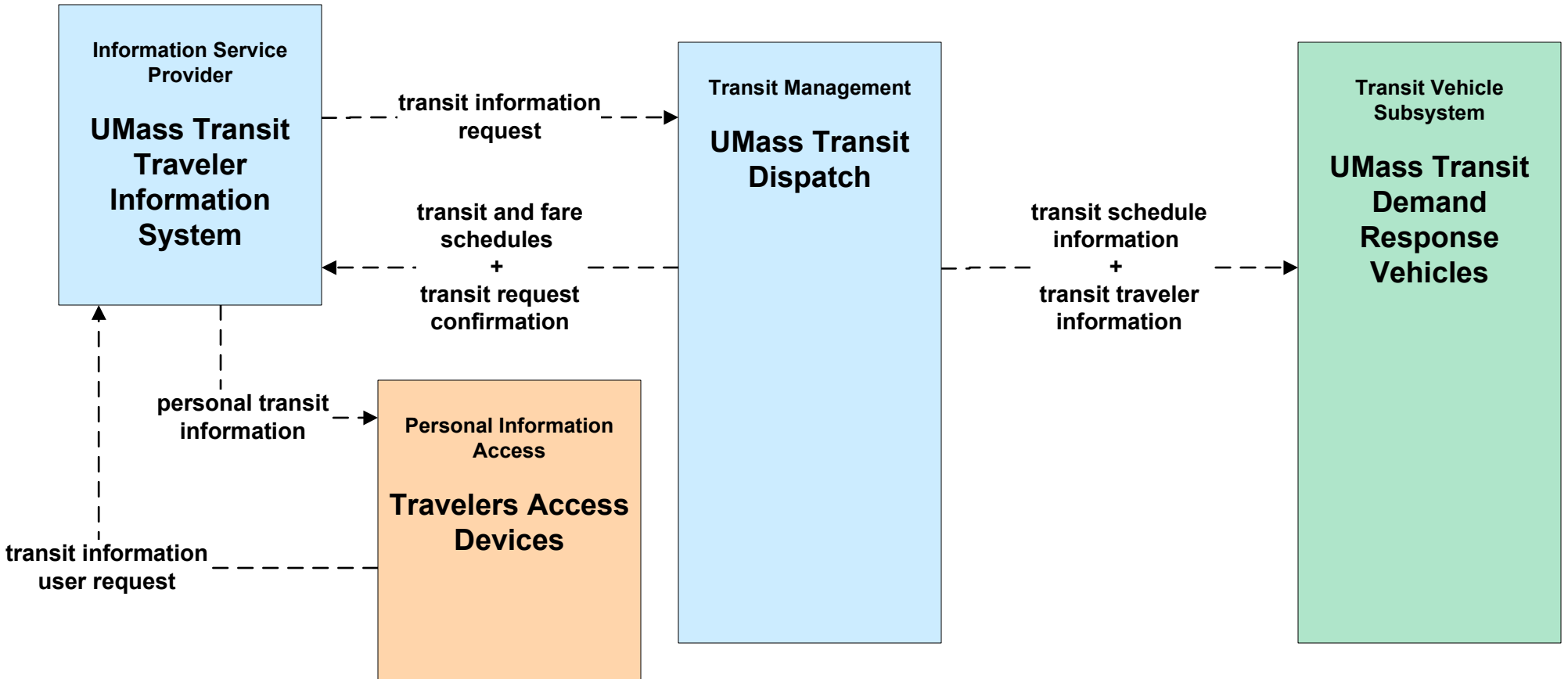
APTS01 - Transit Vehicle Tracking Other Transit Providers



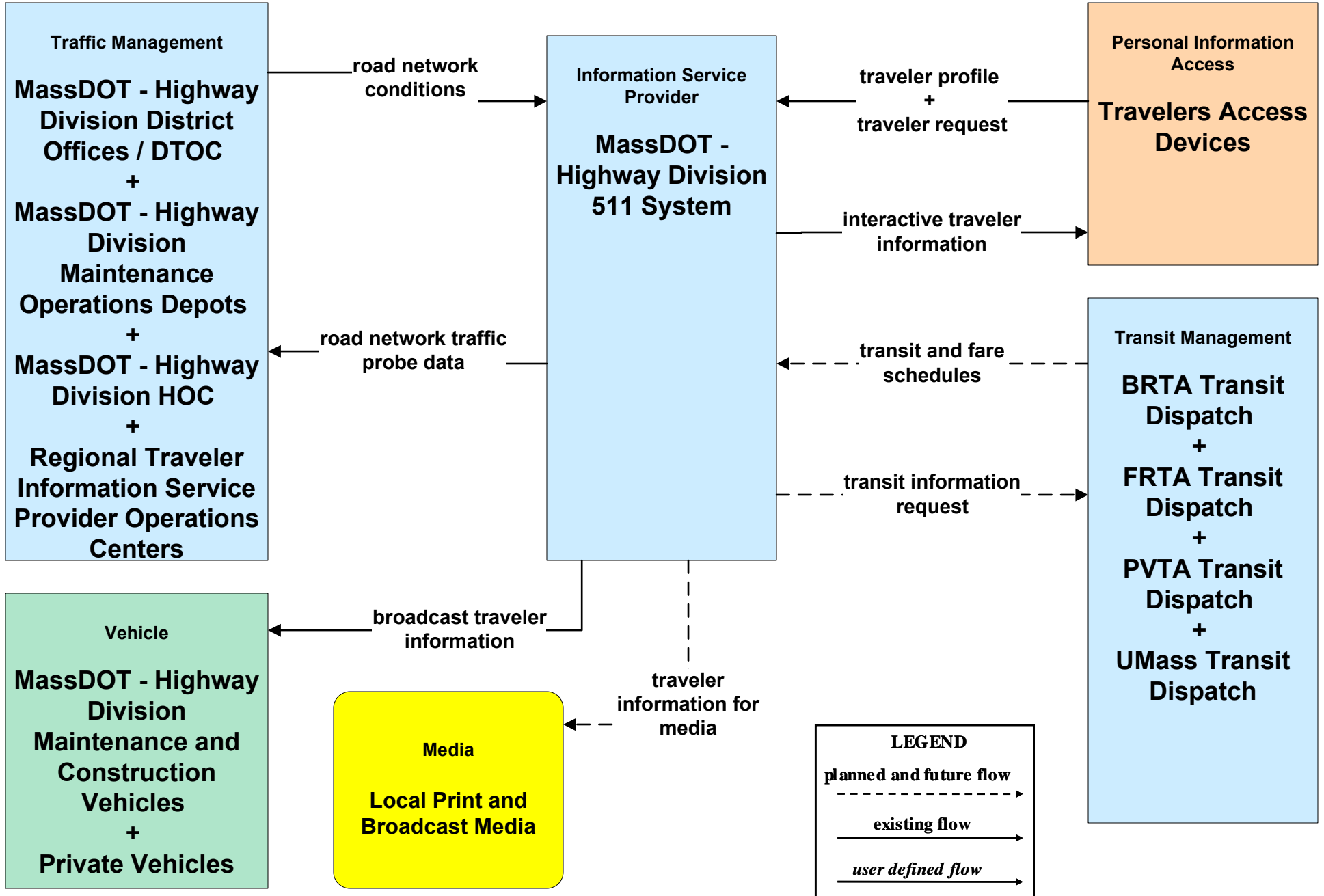
APTS06 - Transit Vehicle Maintenance UMass Transit



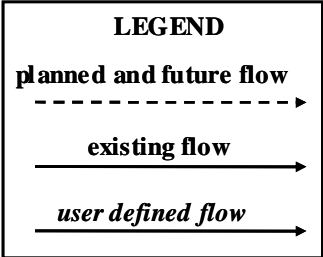
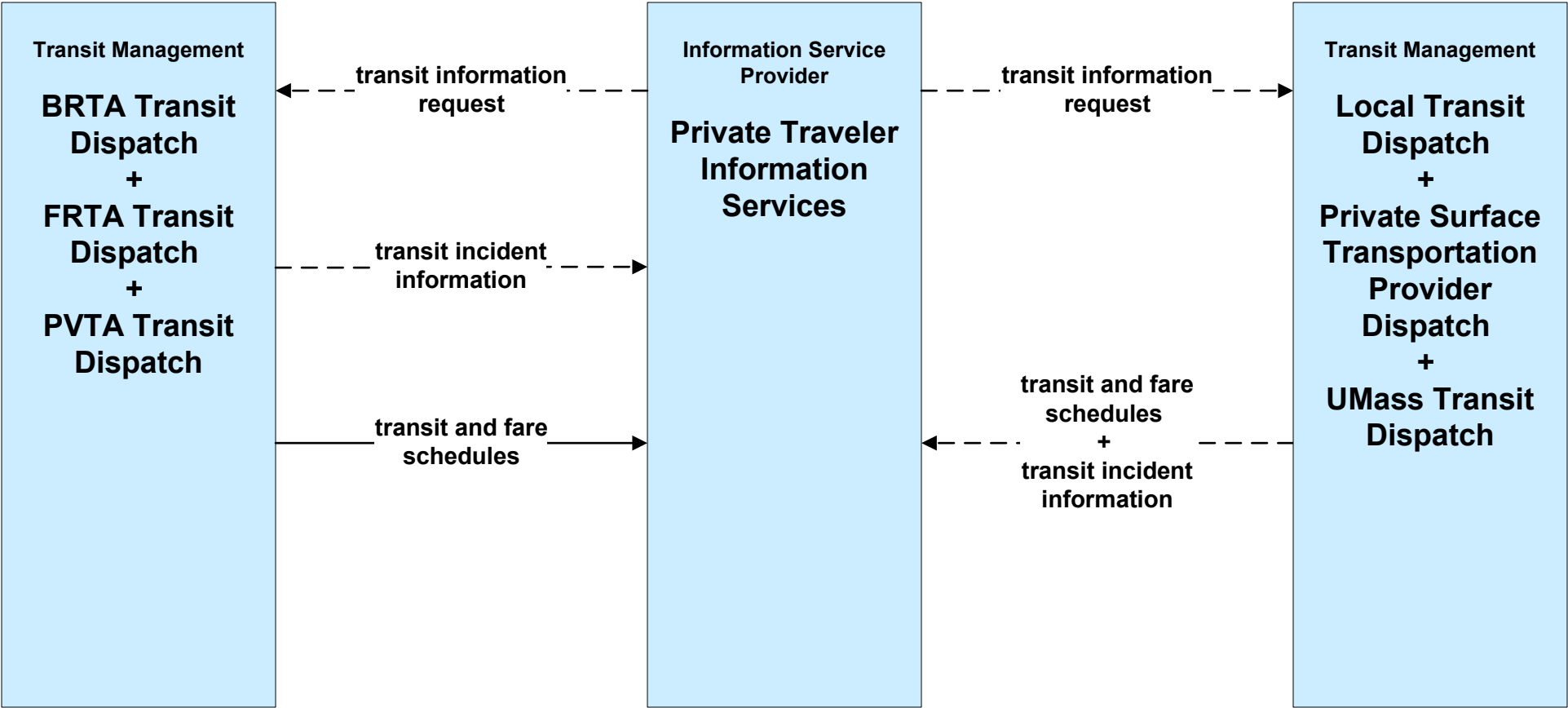
APTS08 - Transit Traveler Information UMass Transit



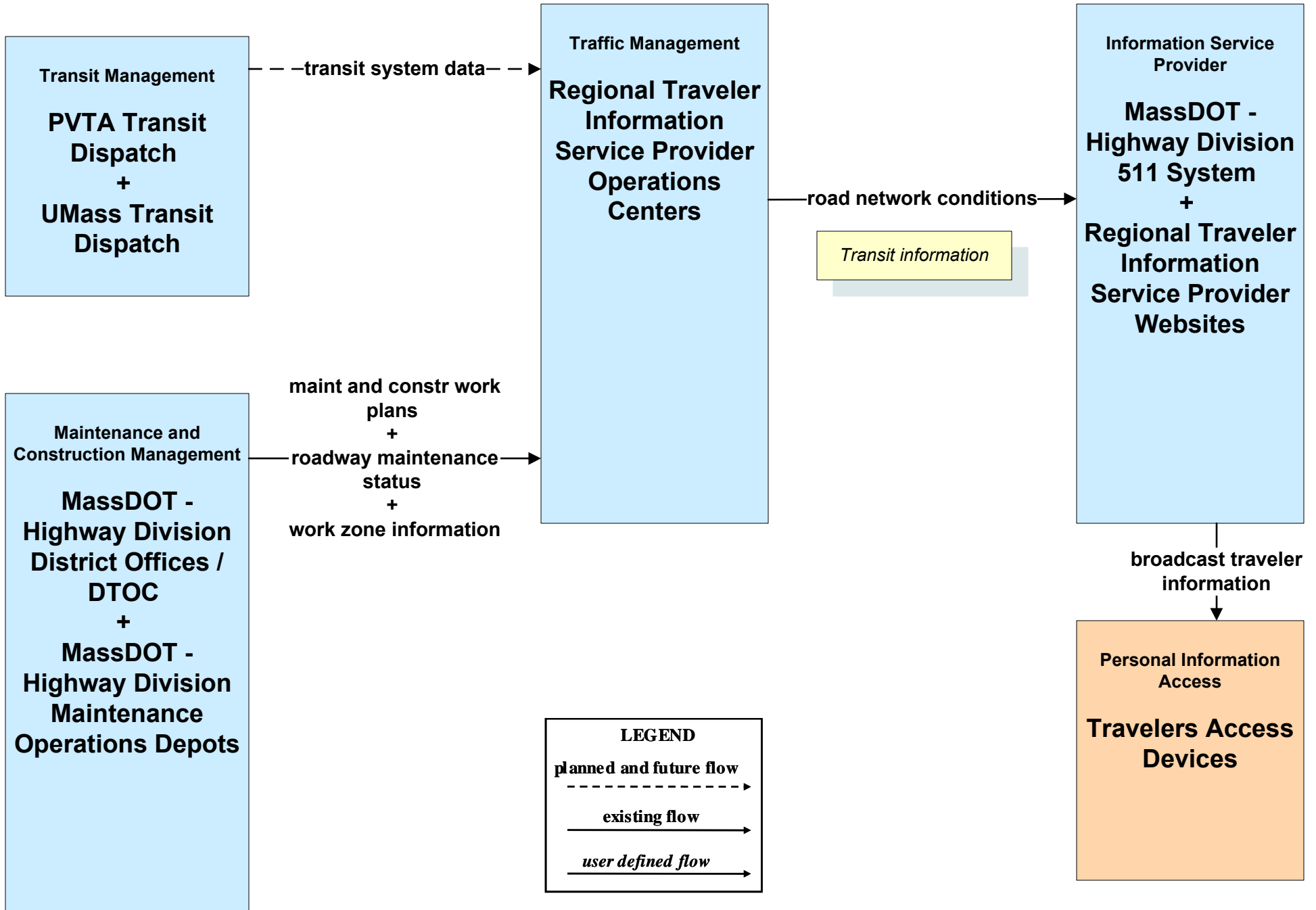
**ATIS02 - Interactive Traveler Information
MassDOT - Highway Division**



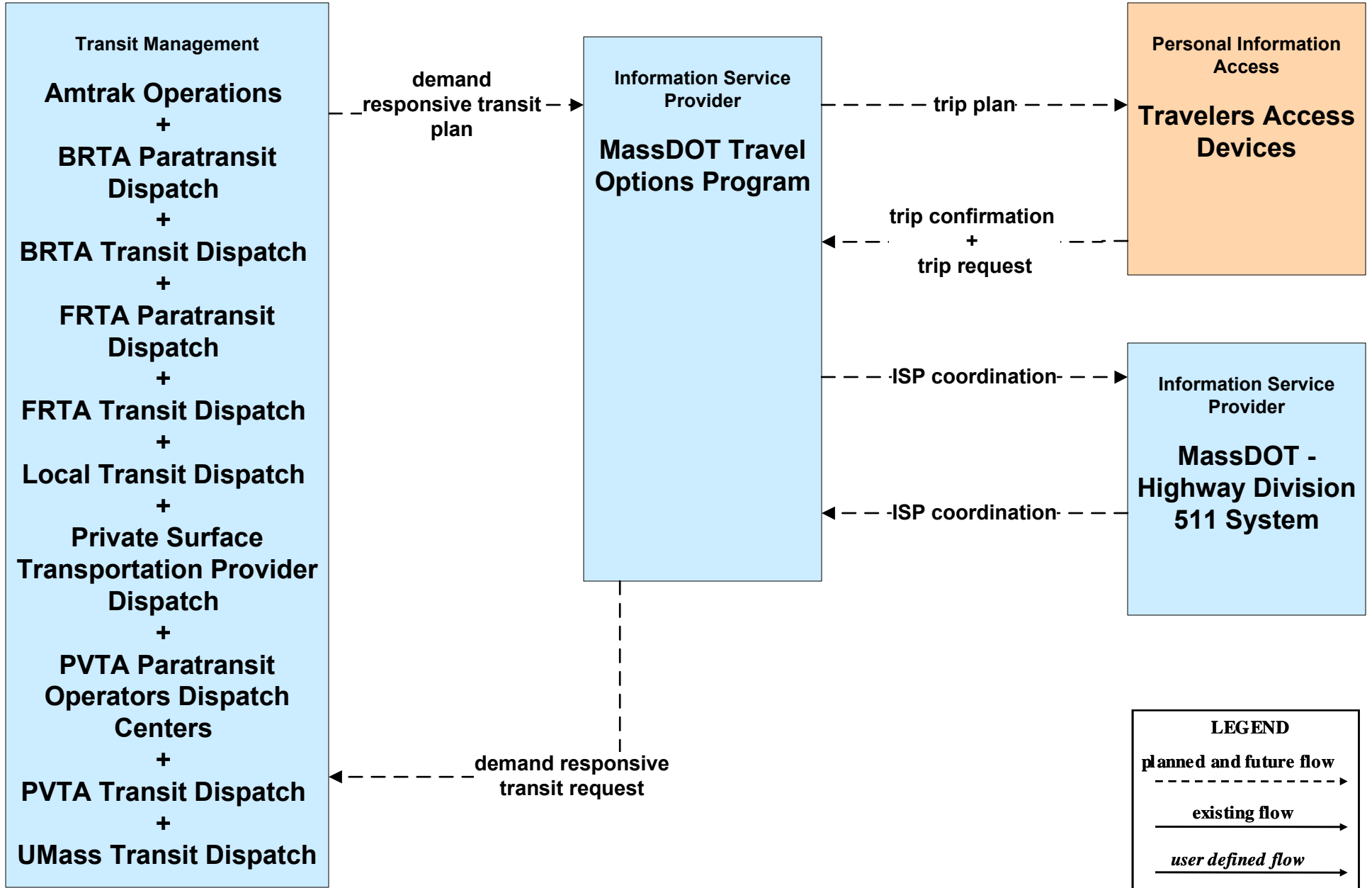
**ATIS02 - Interactive Traveler Information
Private Traveler Information Service Providers (2 of 2)**



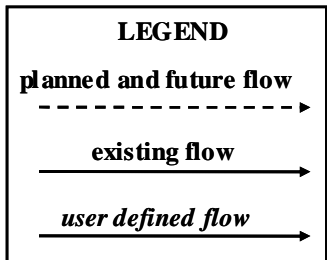
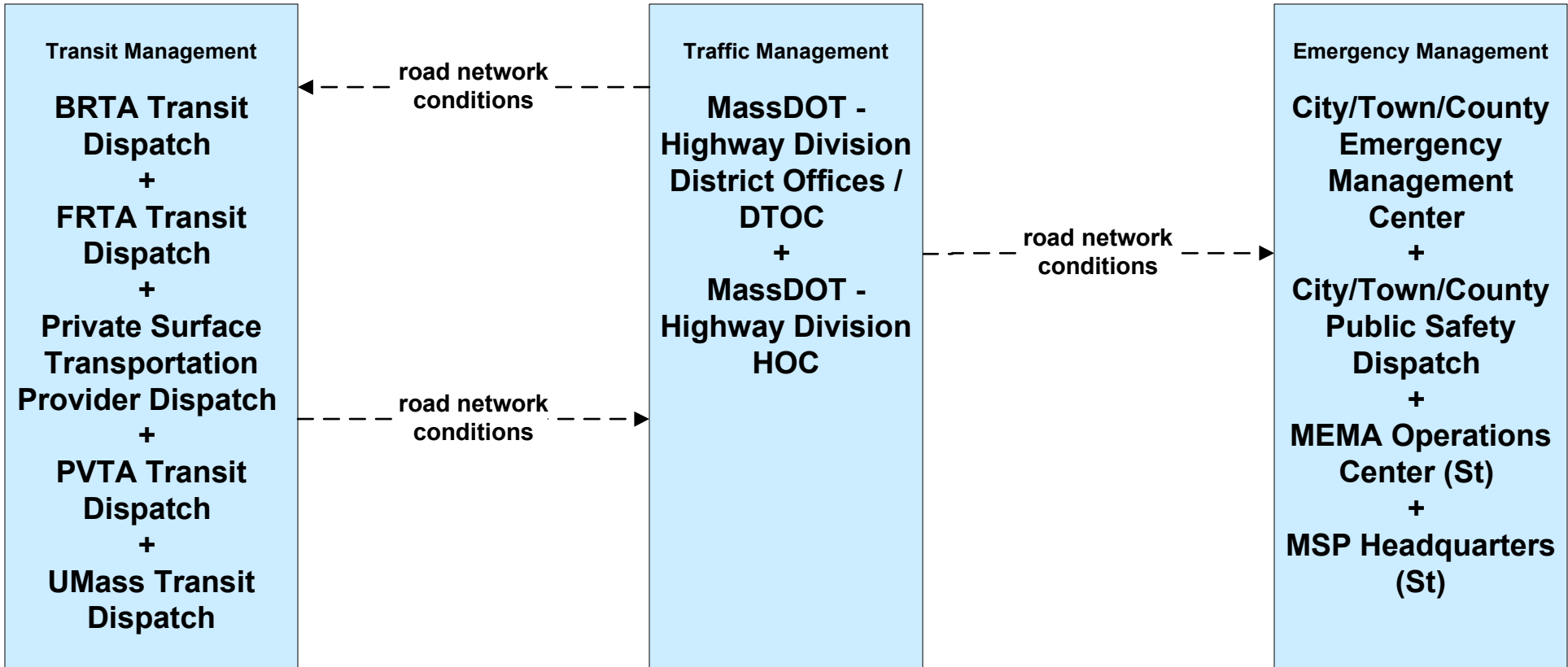
ATIS02 - Interactive Traveler Information Regional Traveler Information Service Providers



ATIS08 - Dynamic Ridesharing MassDOT Travel Options Program

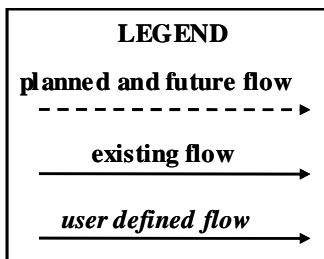
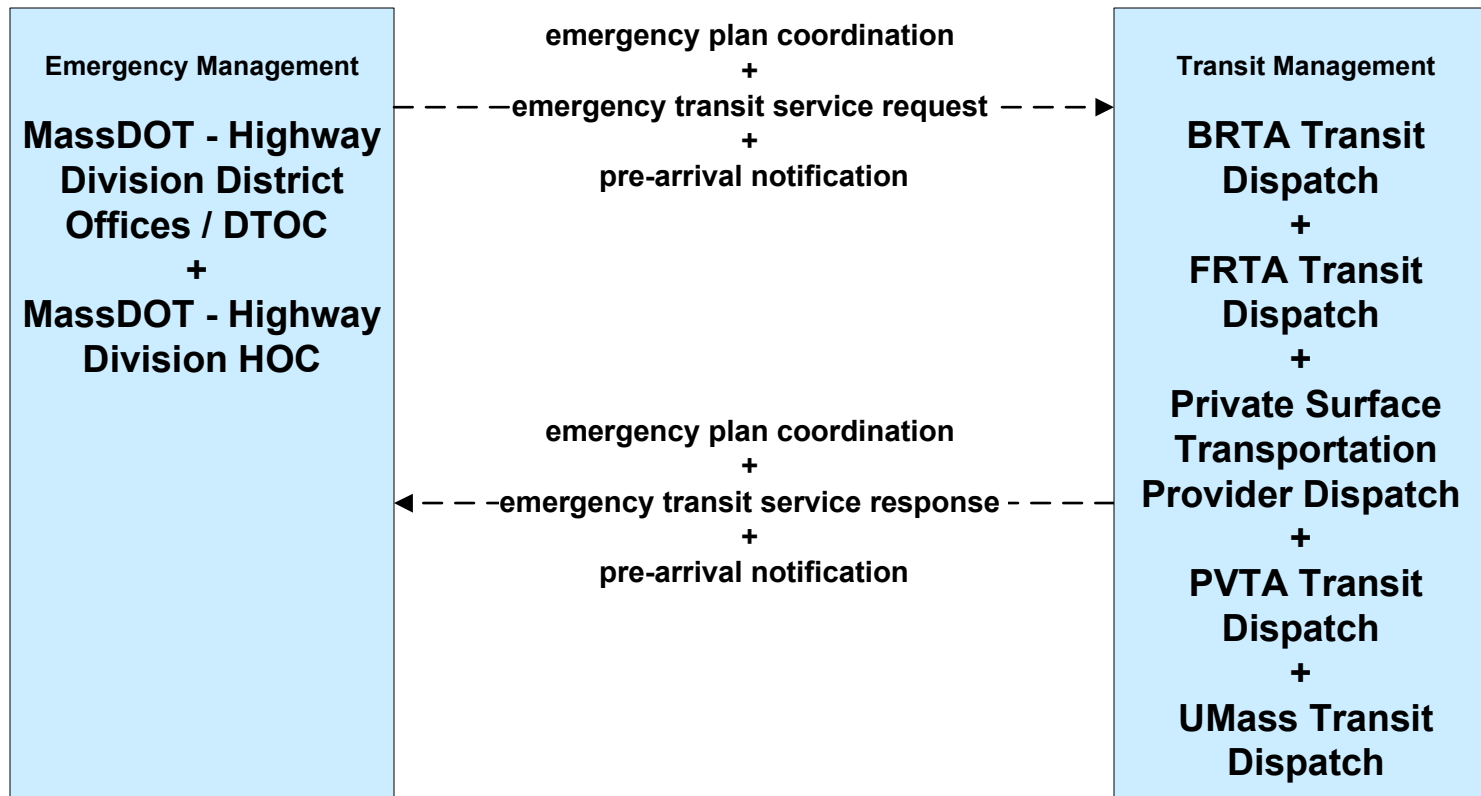


**ATMS06 - Traffic Information Dissemination
MassDOT - Highway Division (2 of 2)**

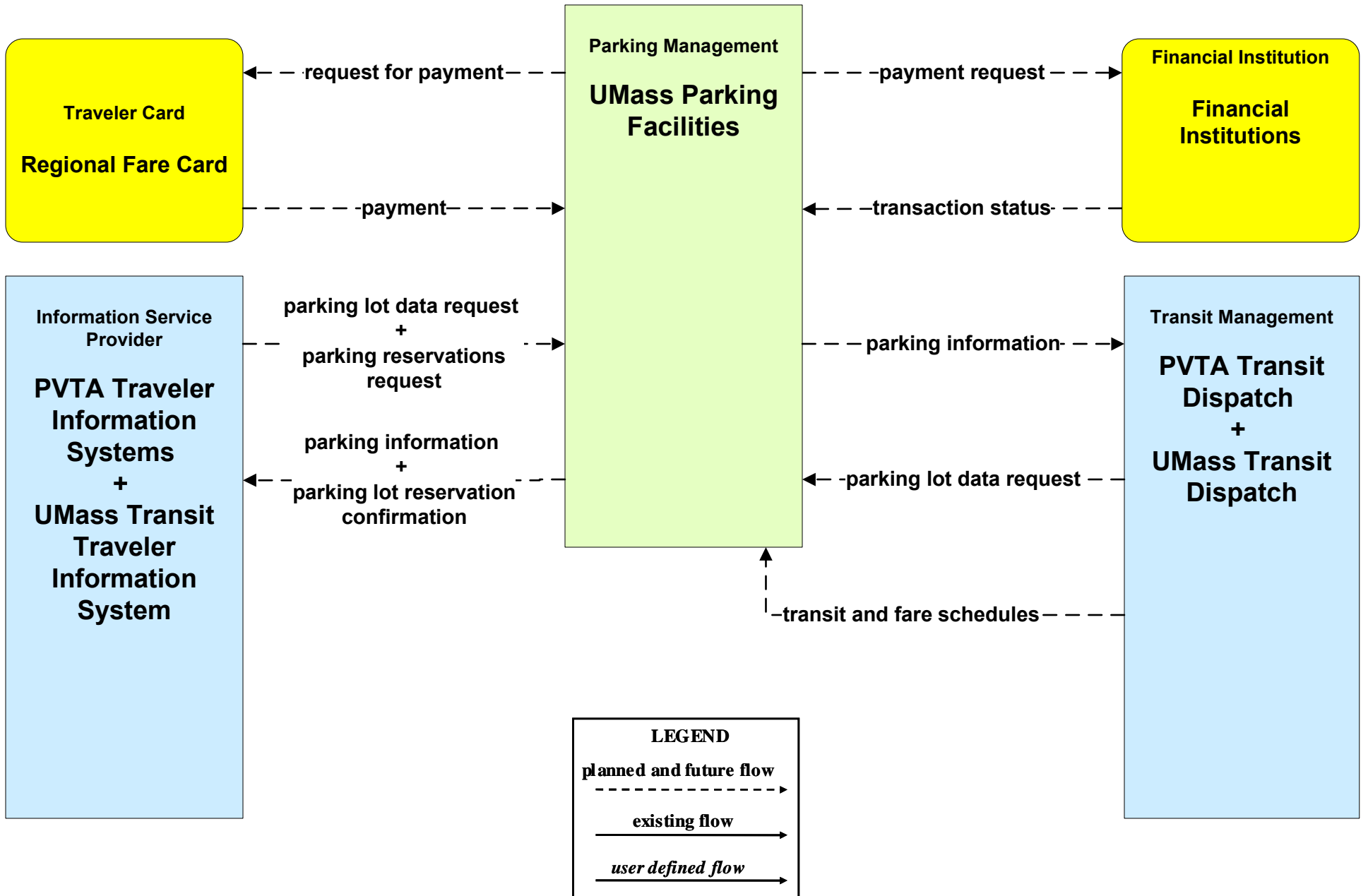


MassDOT HOC shall provide information dissemination services in the event the MassDOT - Highway Division District Offices are closed or there is an outstanding emergency where it is deemed necessary to do so.

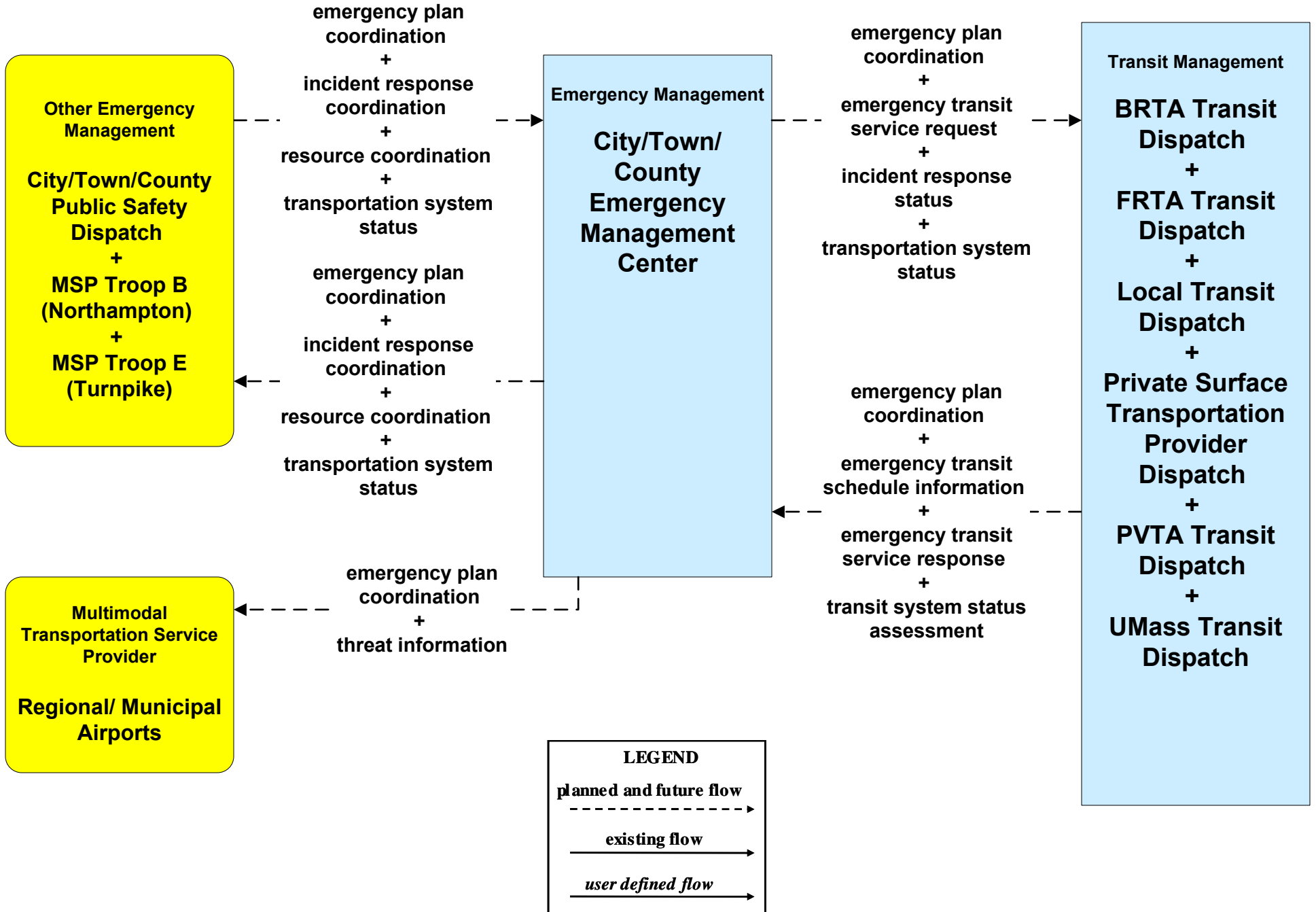
**ATMS08 - Incident Management
MassDOT - Highway Division (EM to Transit)**



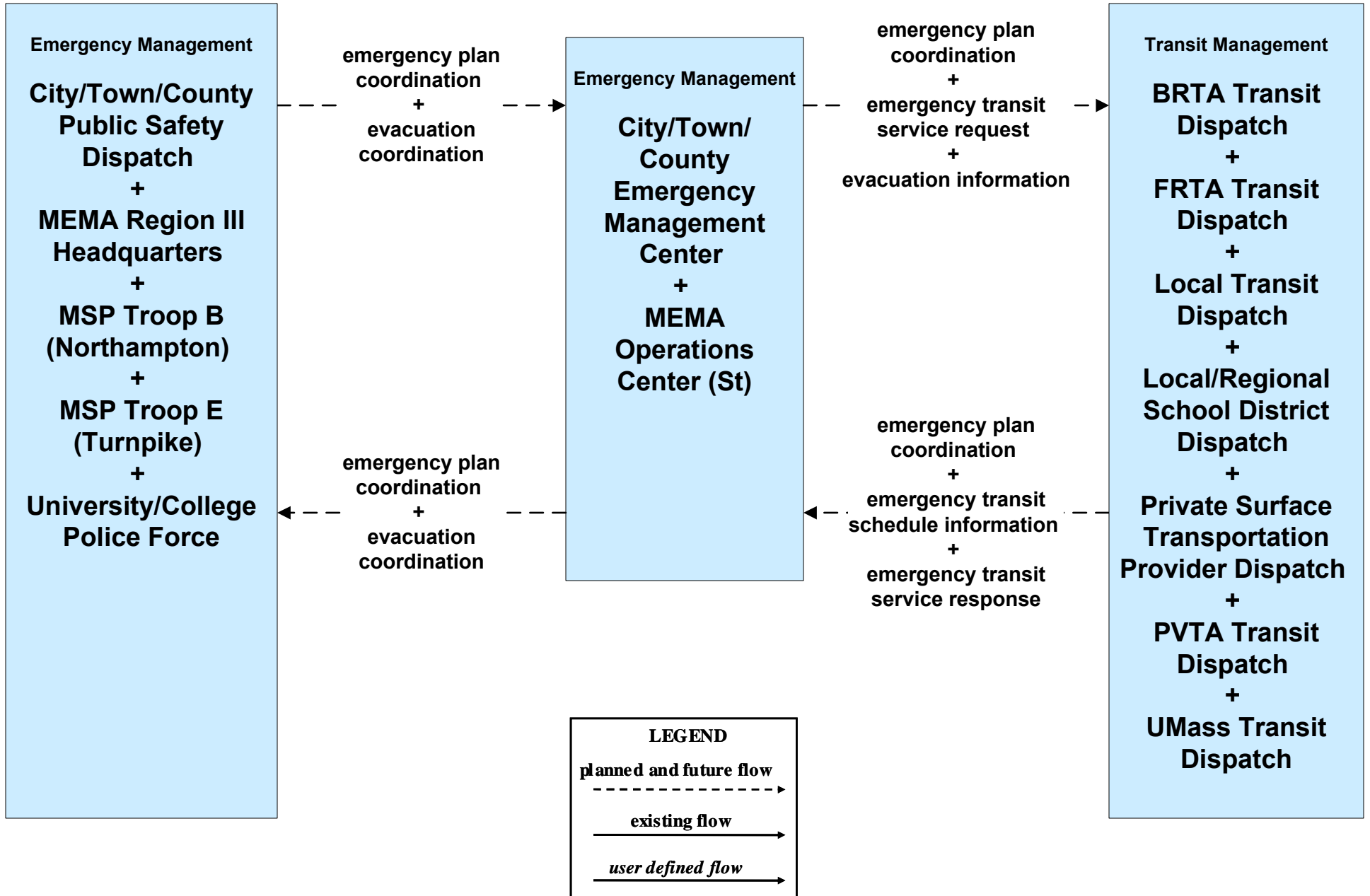
ATMS16 - Parking Facility Management UMass



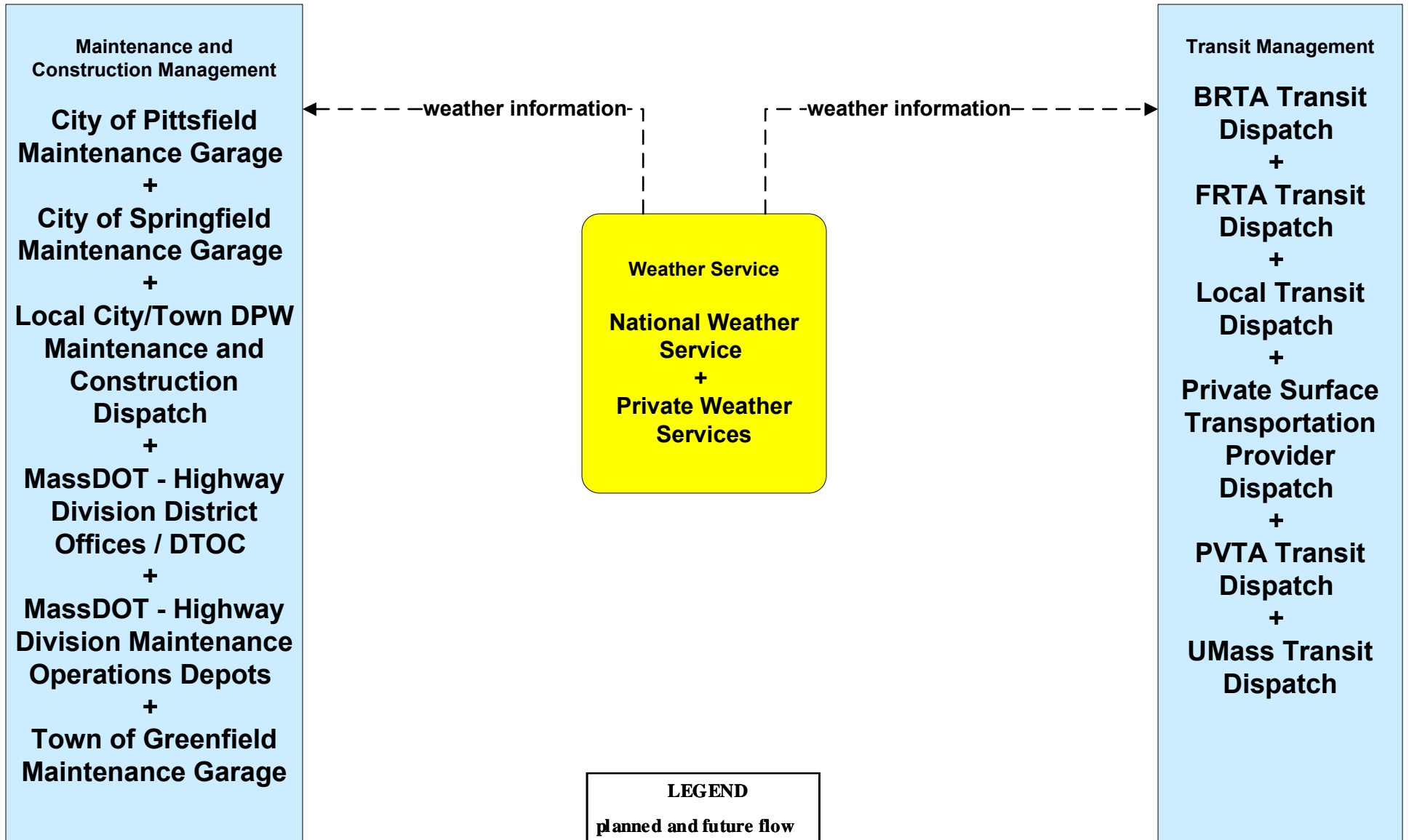
EM08 - Disaster Response City/Town/County (3 of 3)



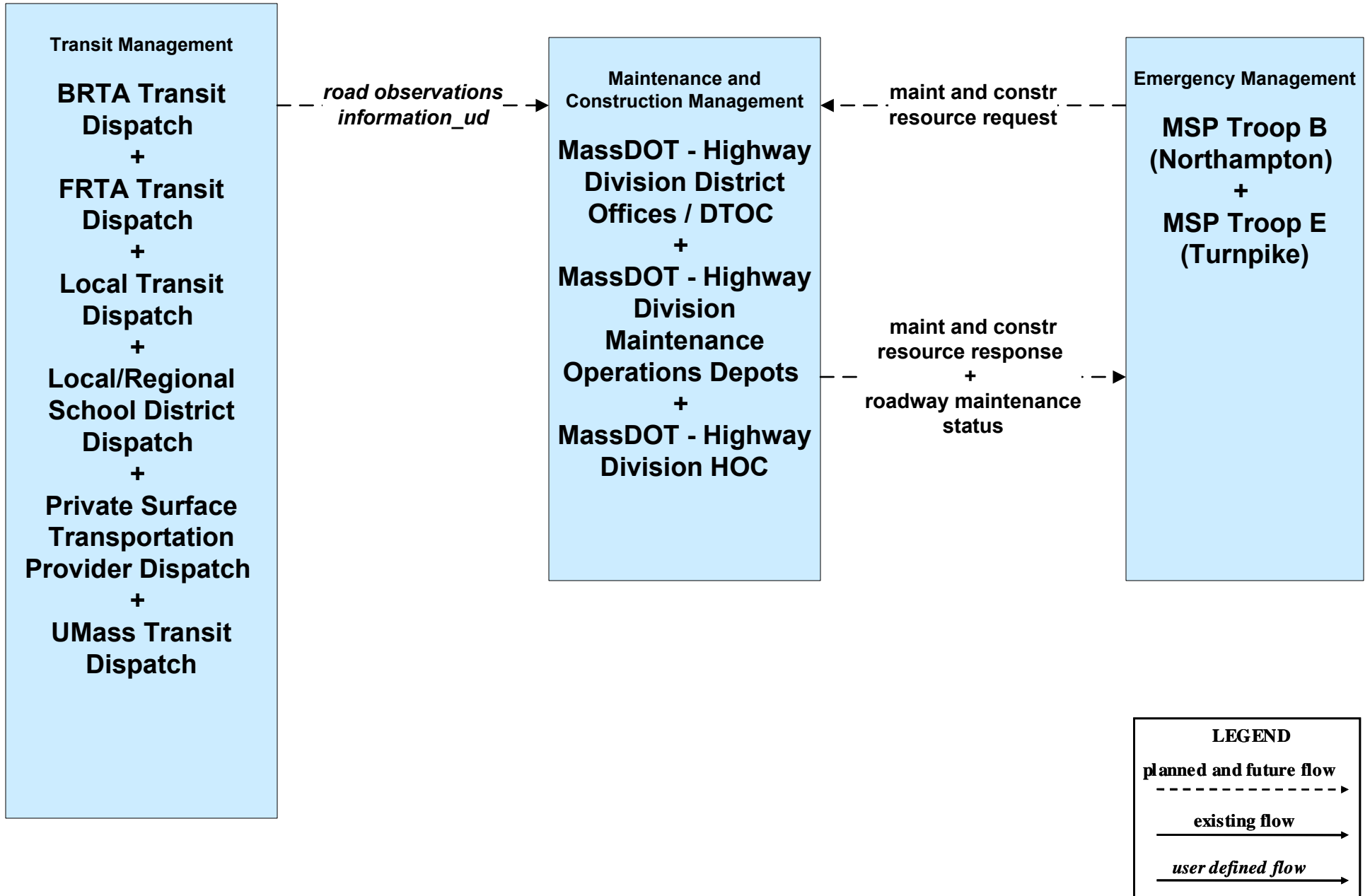
**EM09 - Evacuation and Reentry Management
MEMA (2 of 2) (EM to EM, EM to TRMS)**



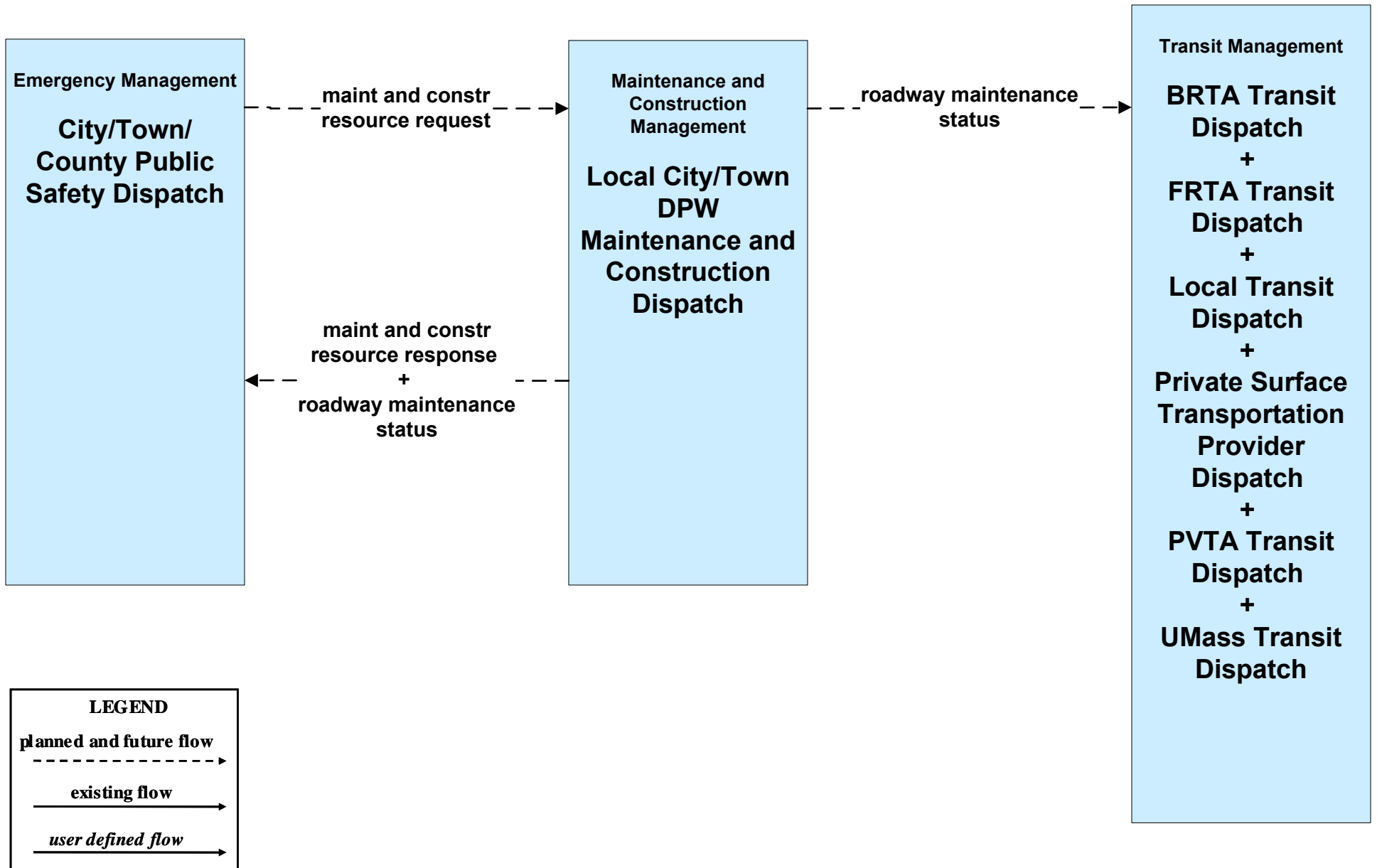
MC04 - Weather Information Processing and Distribution
Weather Services (1 of 2)



**MC06 - Winter Maintenance
MassDOT - Highway Division (2 of 2)**



**MC06 - Winter Maintenance
Local City/Town (2 of 2)**



**MC10 - Maintenance and Construction Activity Coordination
MassDOT - Highway Division (2 of 2)**

