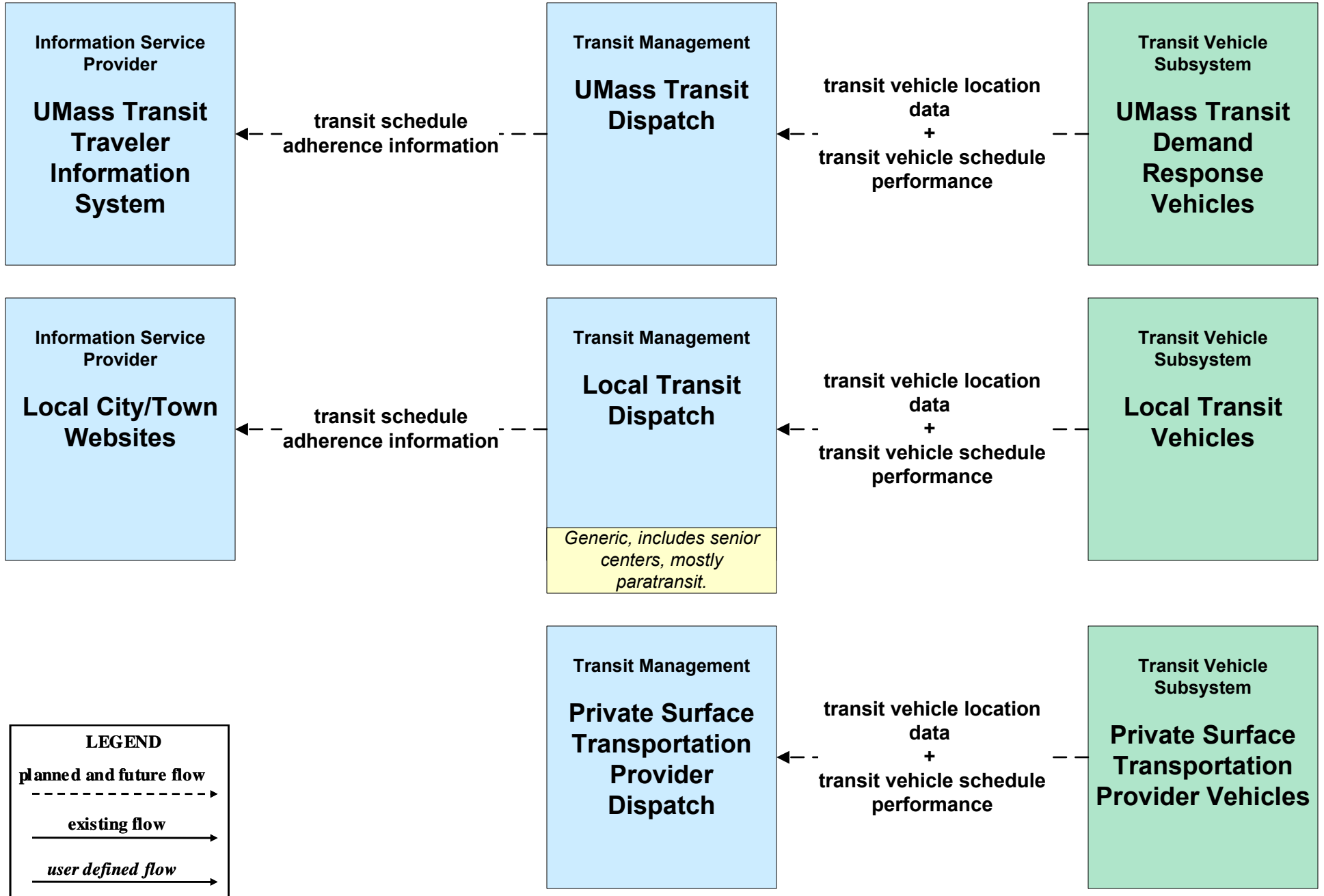
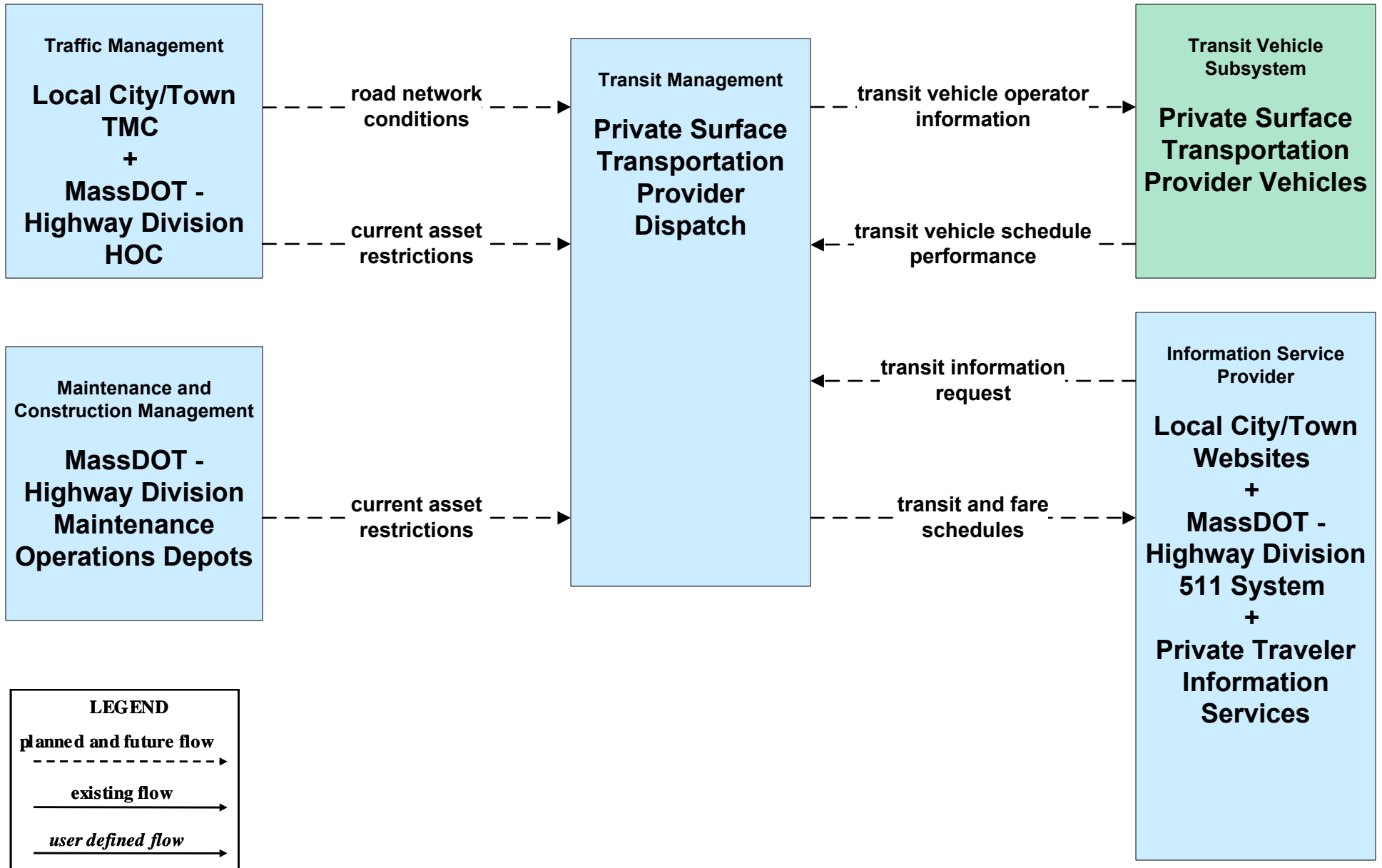


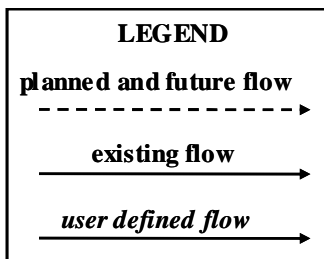
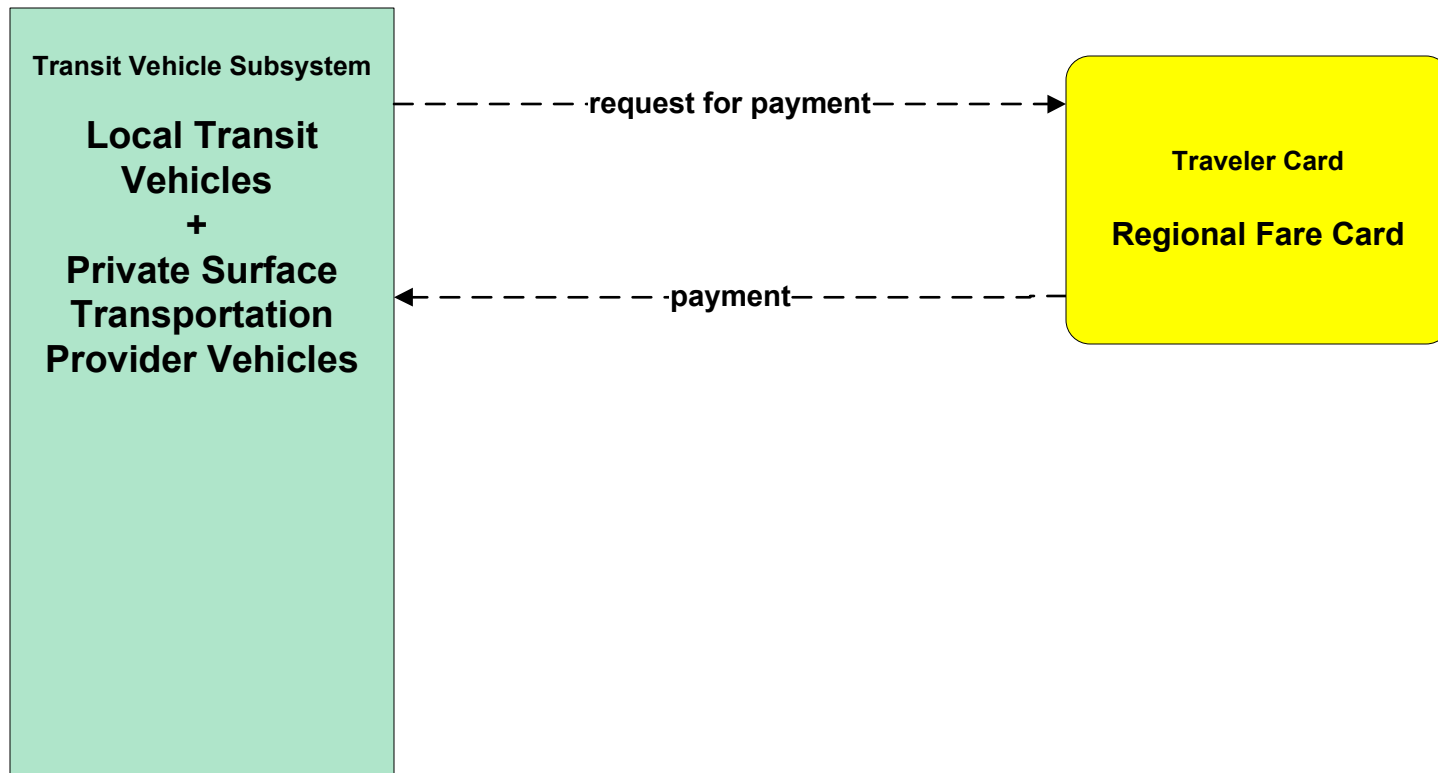
APTS01 - Transit Vehicle Tracking Other Transit Providers



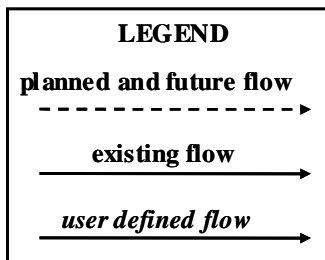
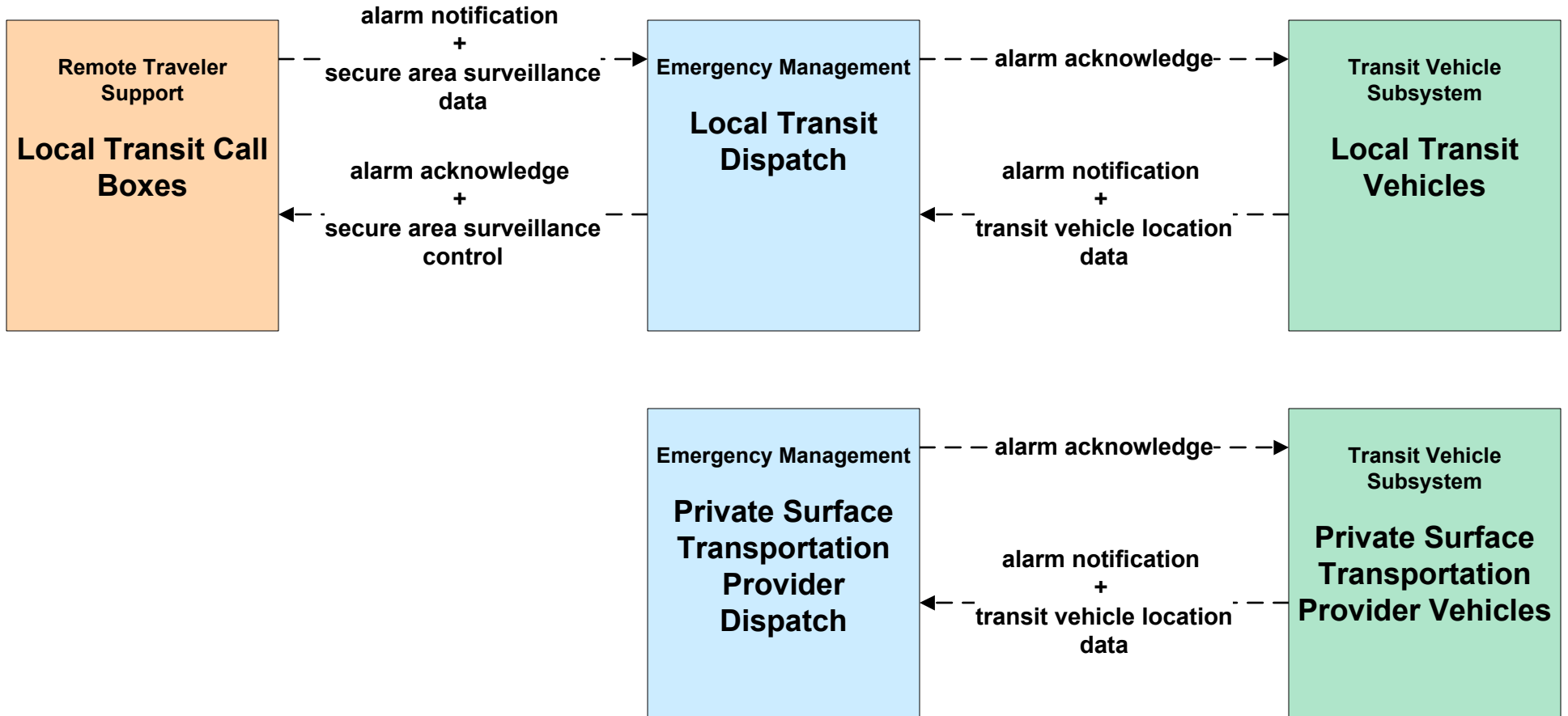
**APTS02 - Transit Fixed-Route Operations
Private Surface Transportation Provider**



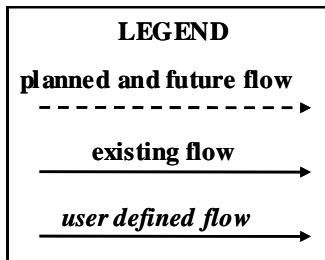
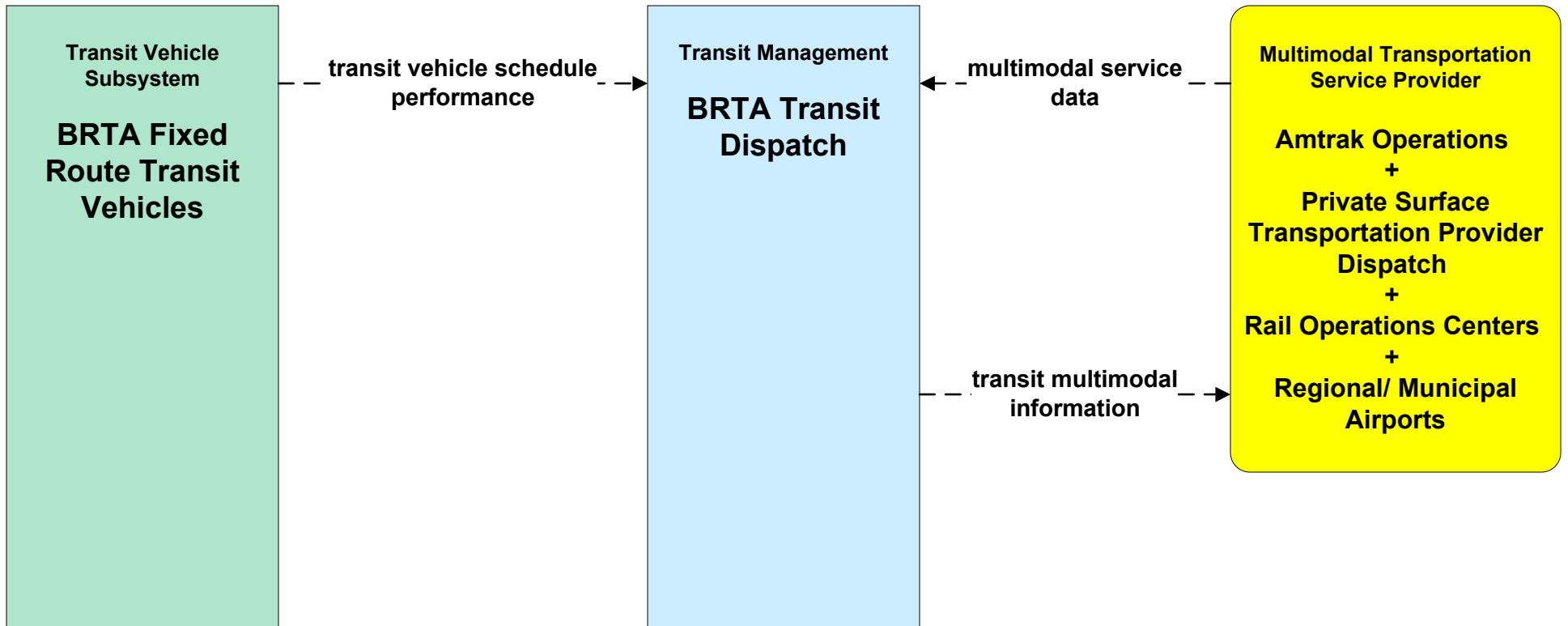
**APTS04 - Transit Passenger and Fare Payment
Other Transit Providers**



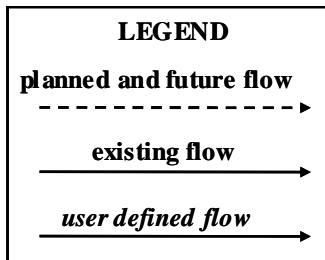
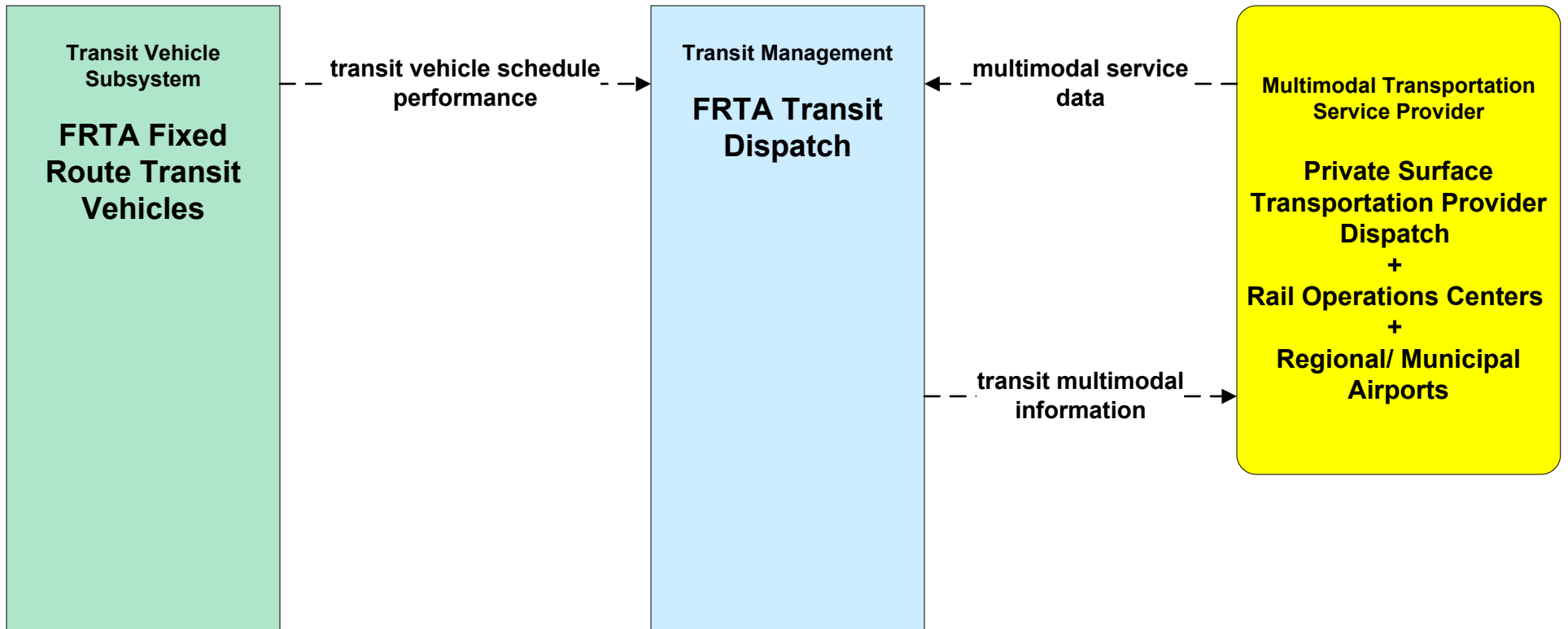
**APTS05 - Transit Security
Fixed Route (3 of 3)**



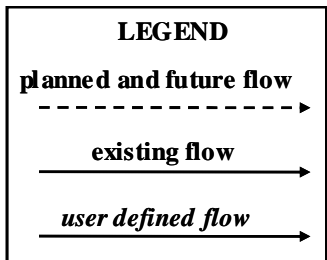
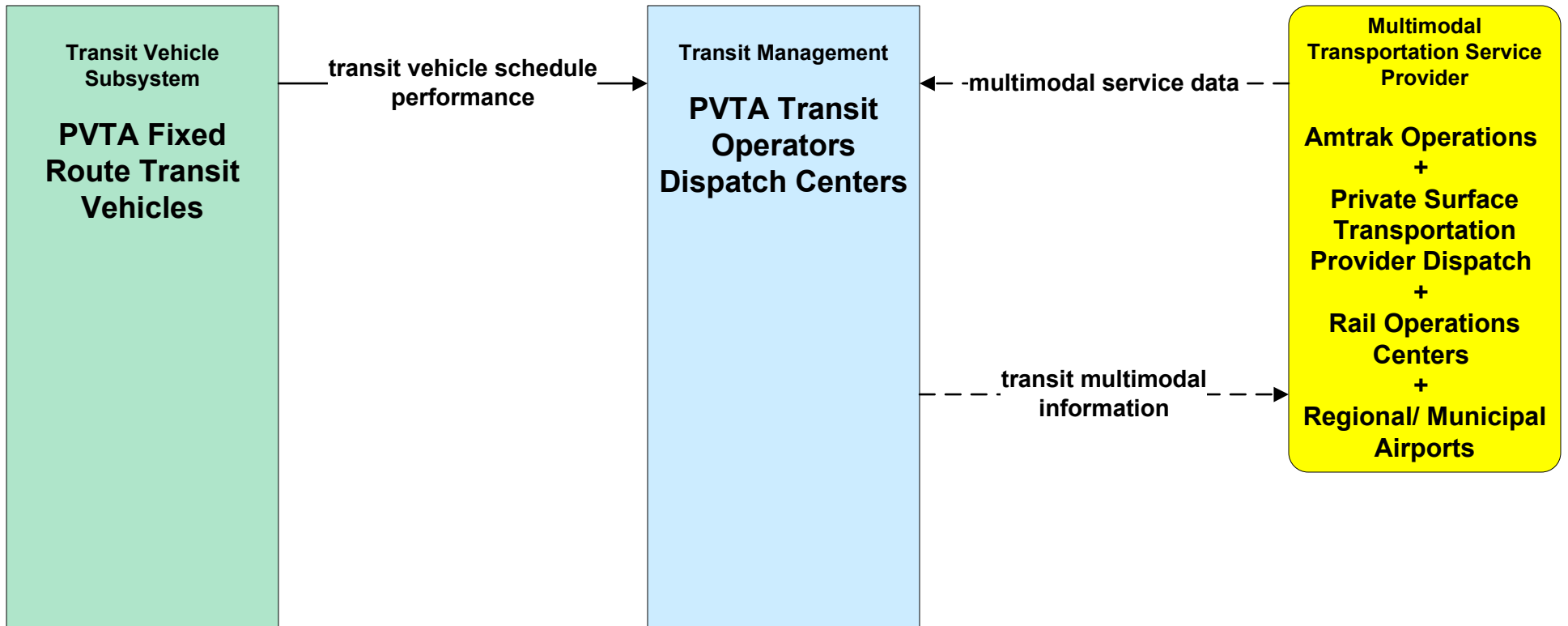
**APTS07 - Multimodal Coordination
BRTA**



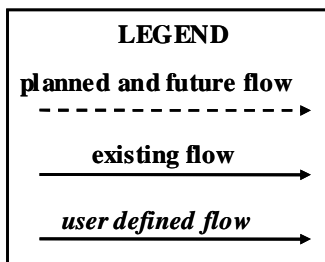
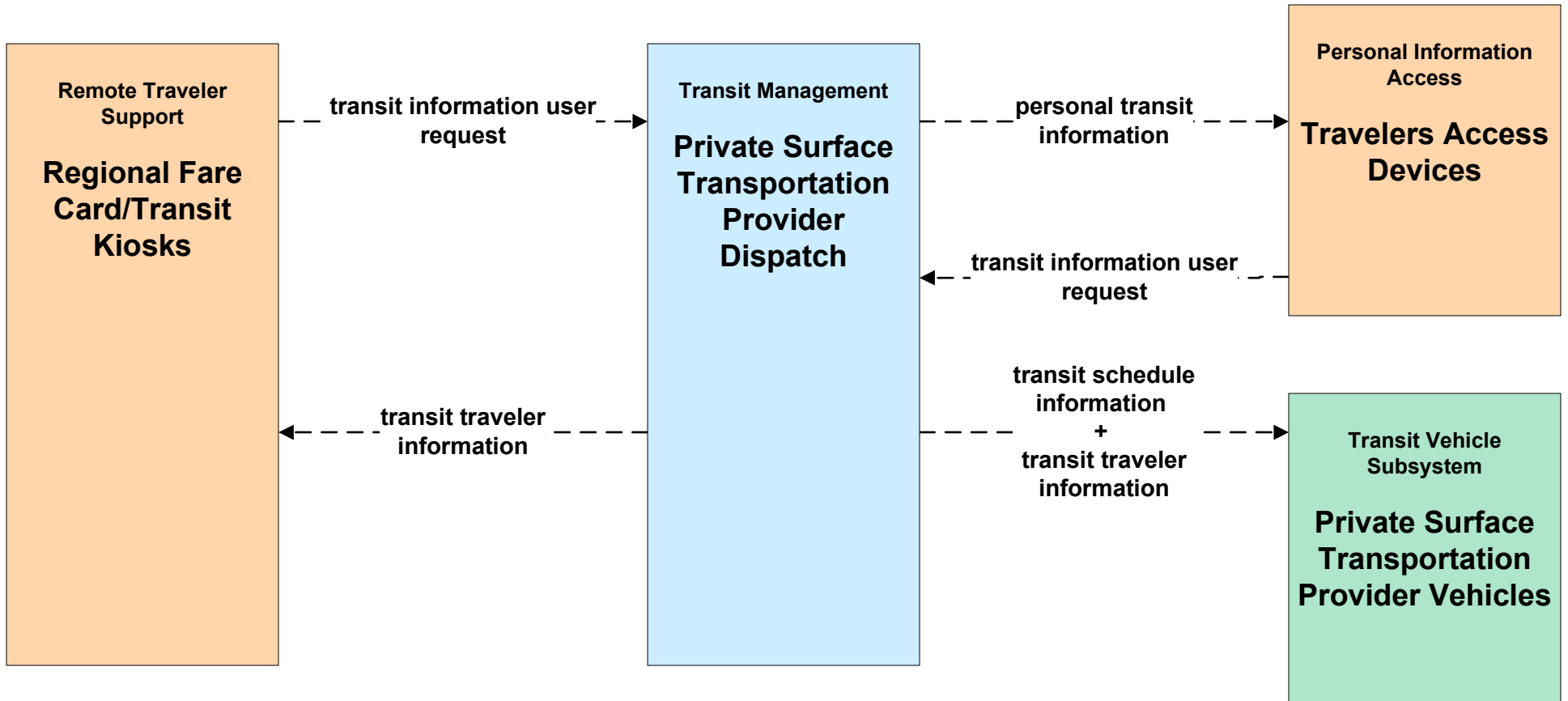
**APTS07 - Multimodal Coordination
FRTA**



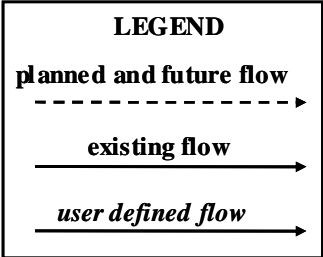
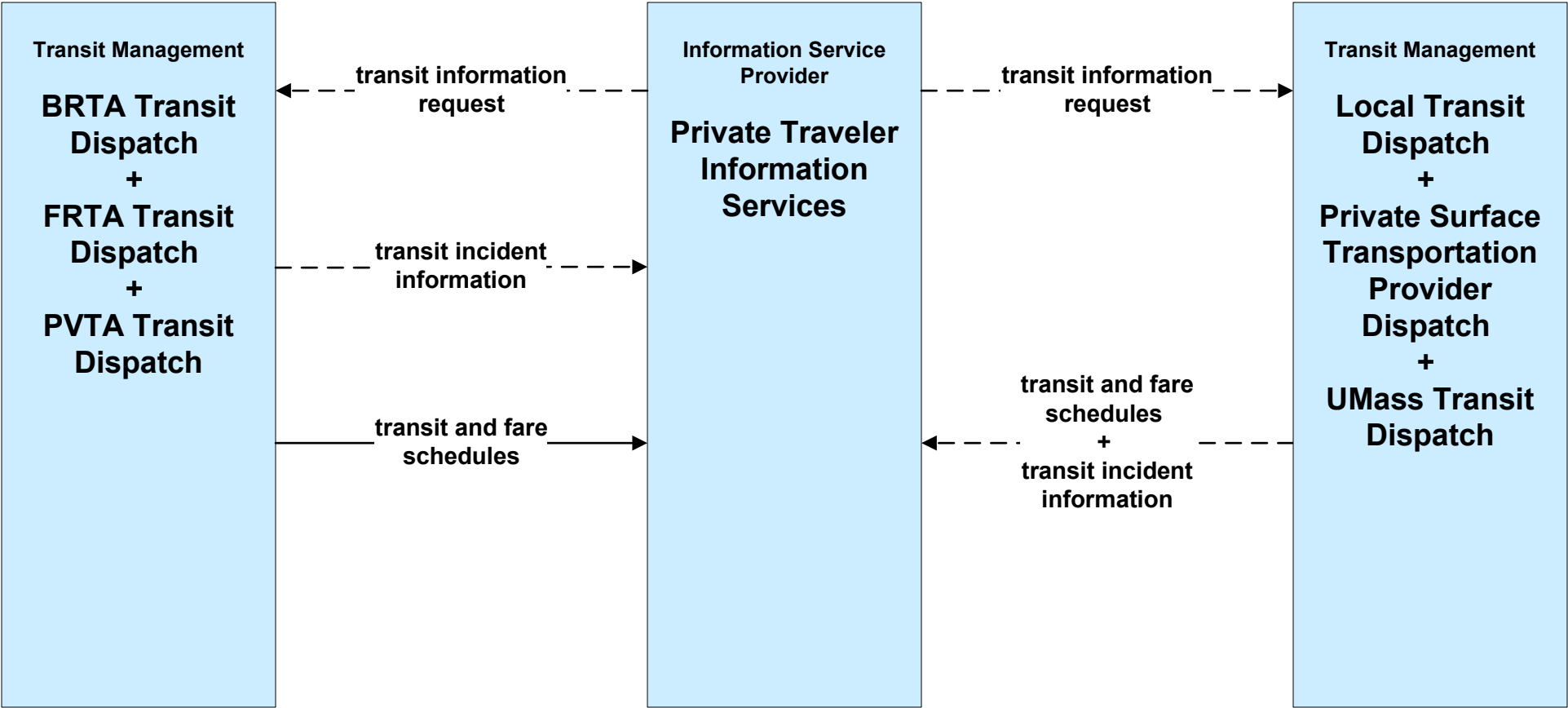
**APTS07 - Multimodal Coordination
PVTA**



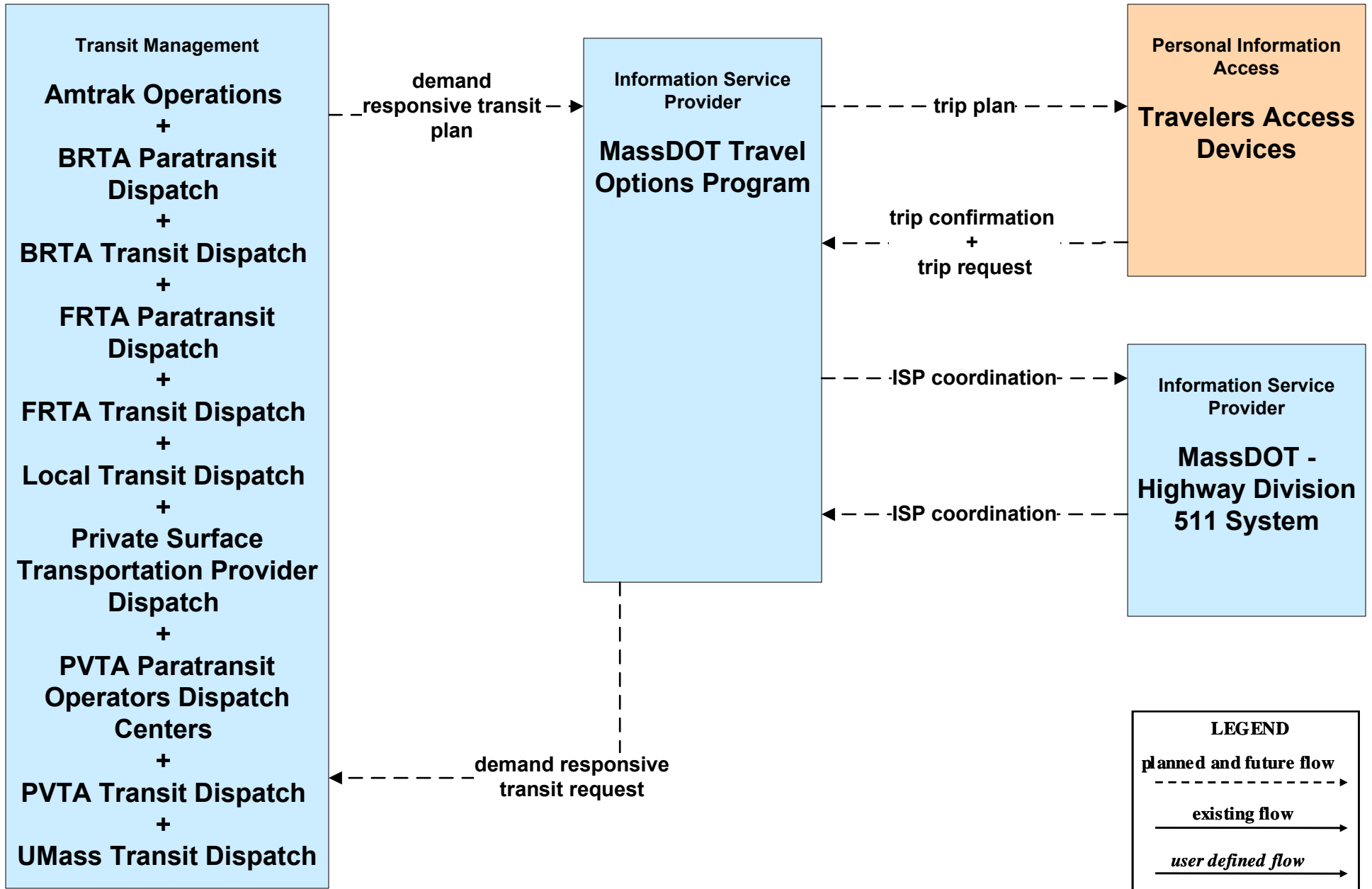
**APTS08 - Transit Traveler Information
Private Surface Transportation Provider**



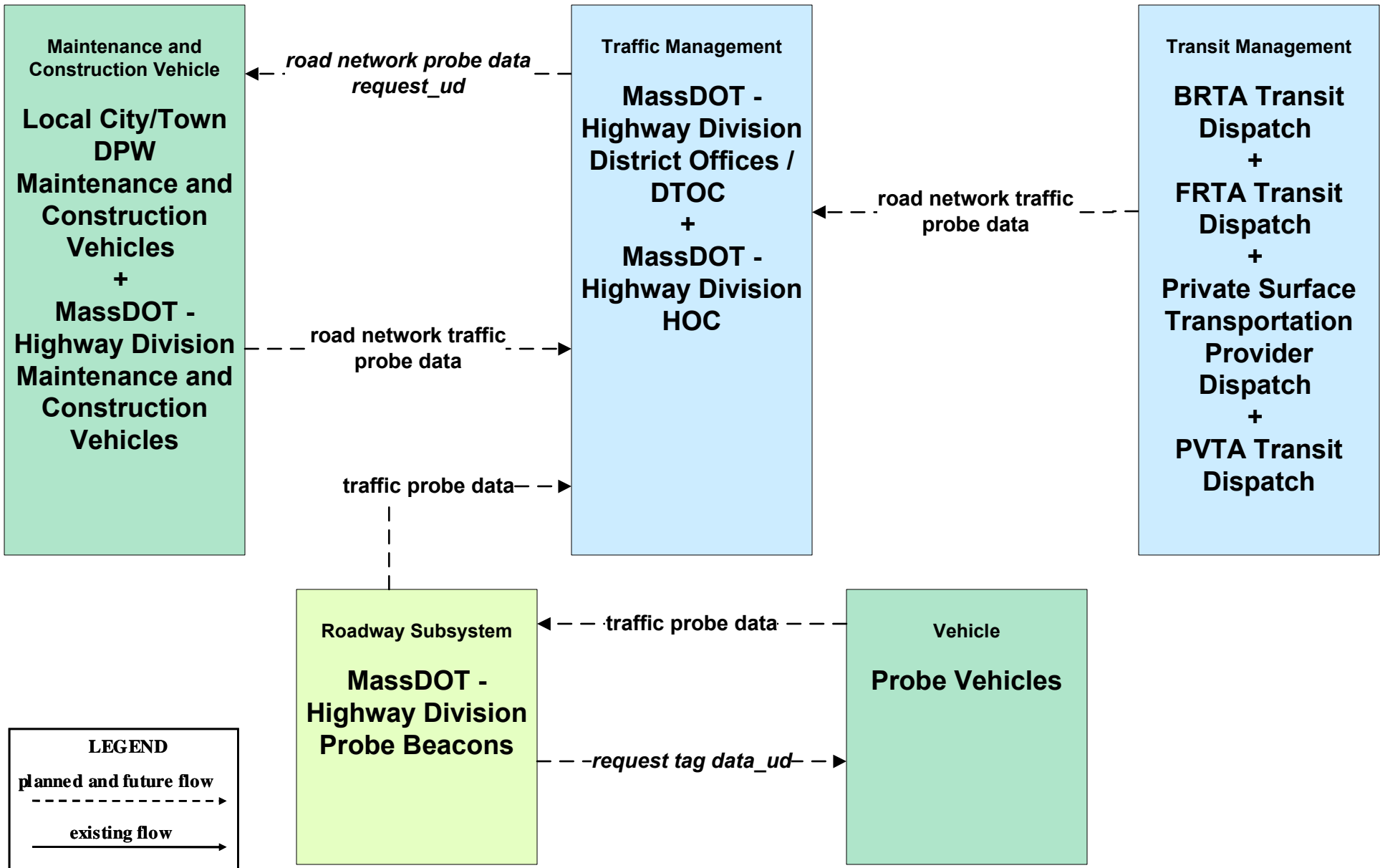
**ATIS02 - Interactive Traveler Information
Private Traveler Information Service Providers (2 of 2)**



ATIS08 - Dynamic Ridesharing MassDOT Travel Options Program



**ATMS02 - Probe Surveillance
MassDOT - Highway Division**



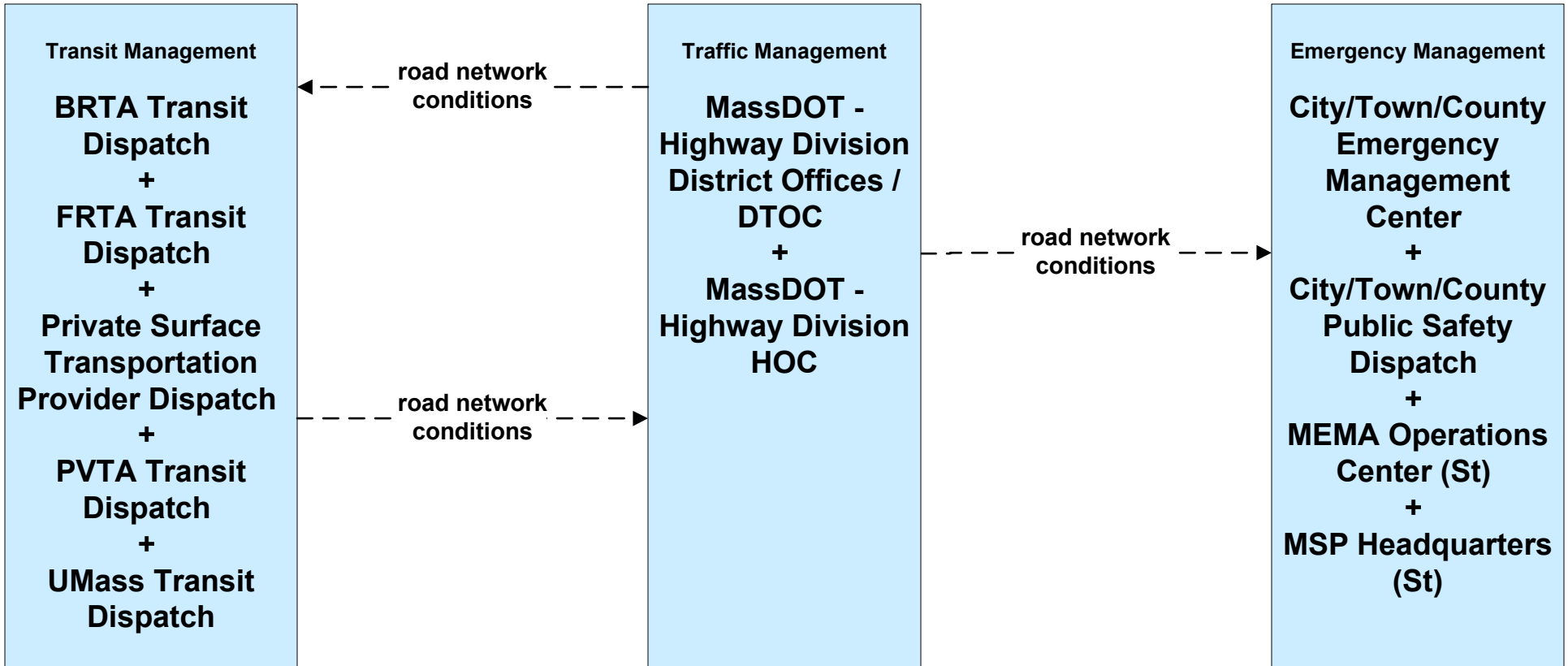
LEGEND

planned and future flow
----->

existing flow
—————>

user defined flow
—————>

**ATMS06 - Traffic Information Dissemination
MassDOT - Highway Division (2 of 2)**

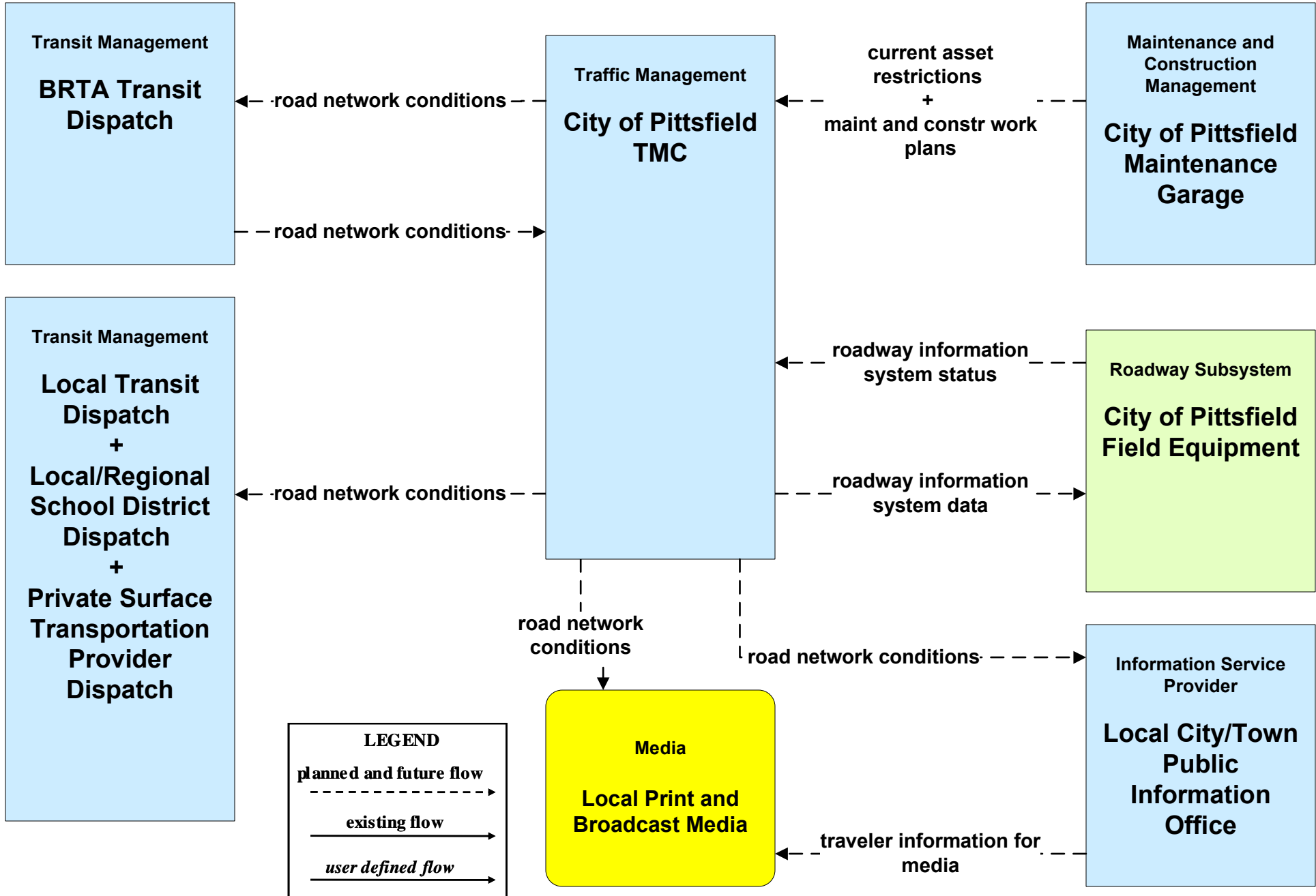


LEGEND

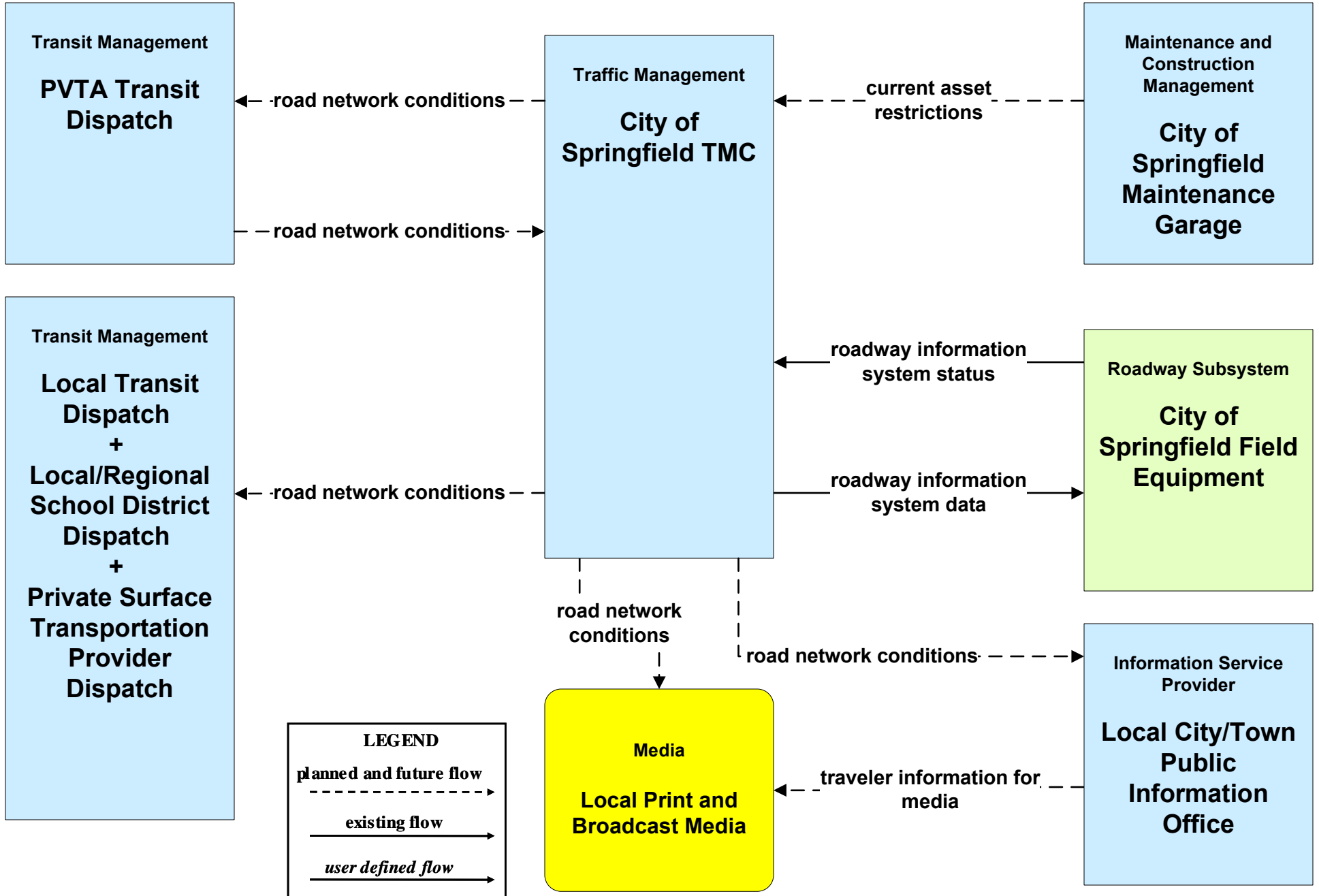
- planned and future flow (dashed arrow)
- existing flow (solid arrow)
- user defined flow (solid arrow)

MassDOT HOC shall provide information dissemination services in the event the MassDOT - Highway Division District Offices are closed or there is an outstanding emergency where it is deemed necessary to do so.

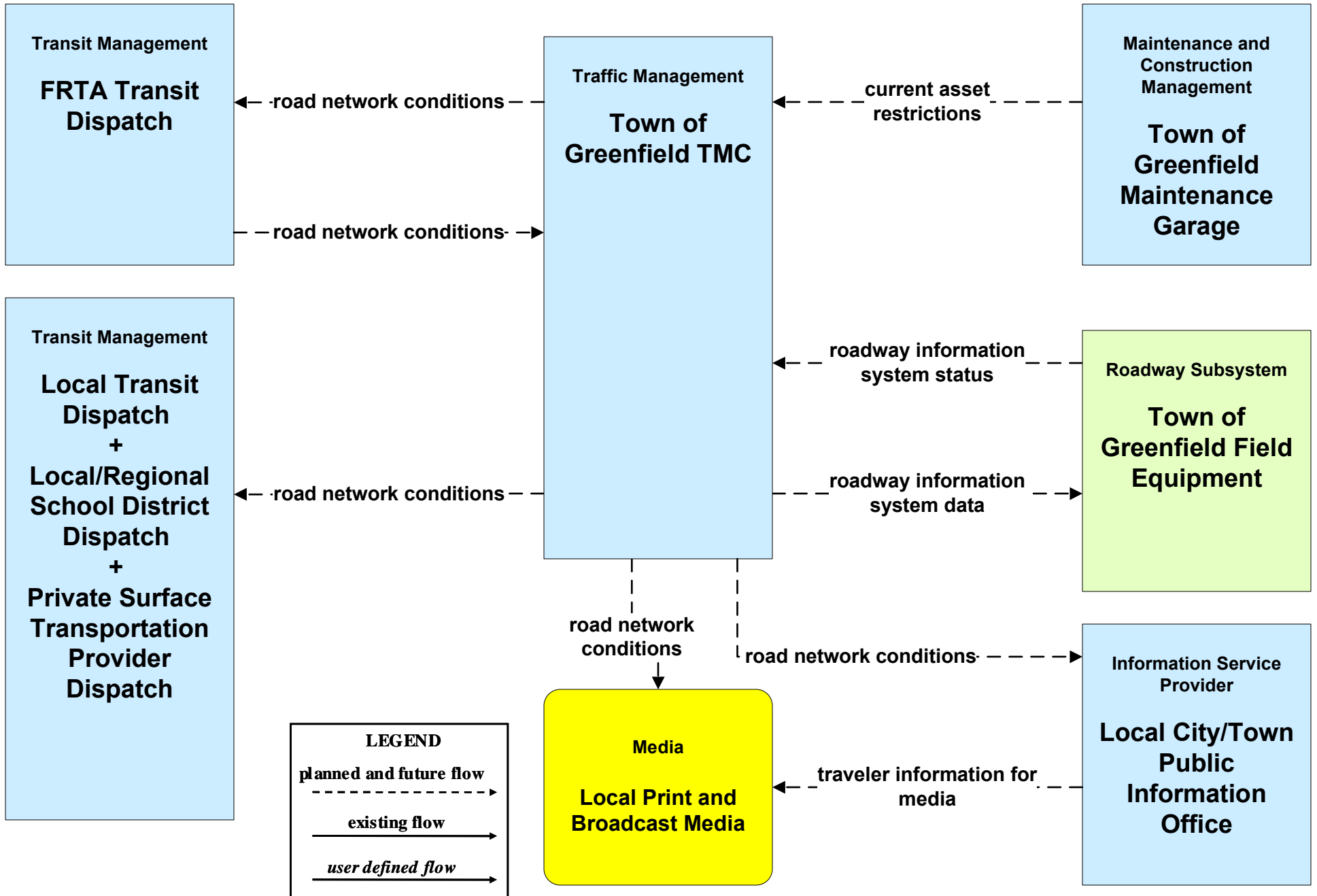
ATMS06 - Traffic Information Dissemination City of Pittsfield (1 of 2)



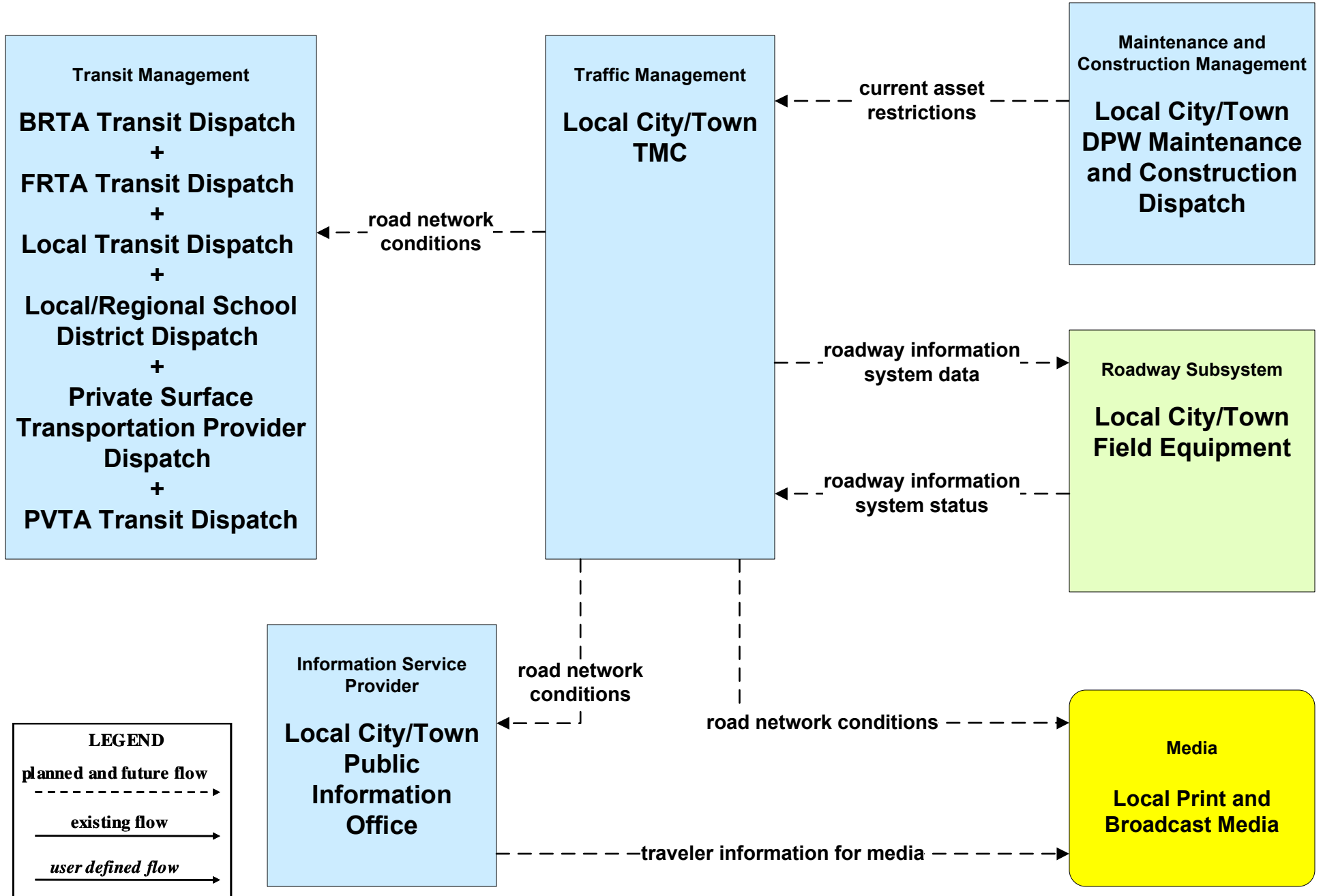
ATMS06 - Traffic Information Dissemination City of Springfield (1 of 2)



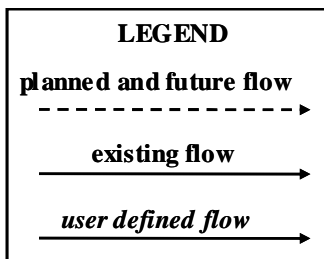
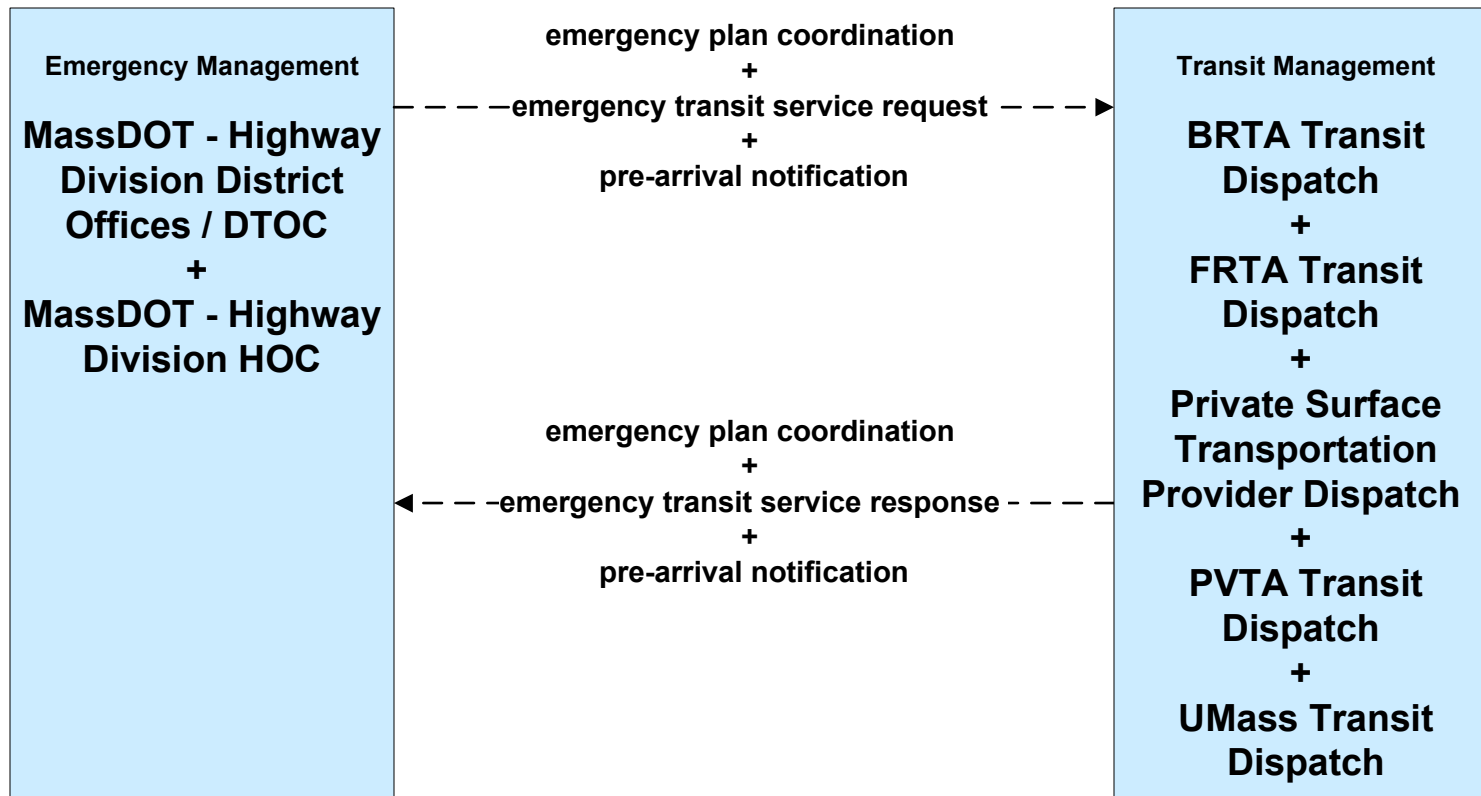
ATMS06 - Traffic Information Dissemination Town of Greenfield (1 of 2)



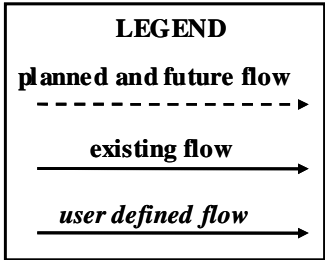
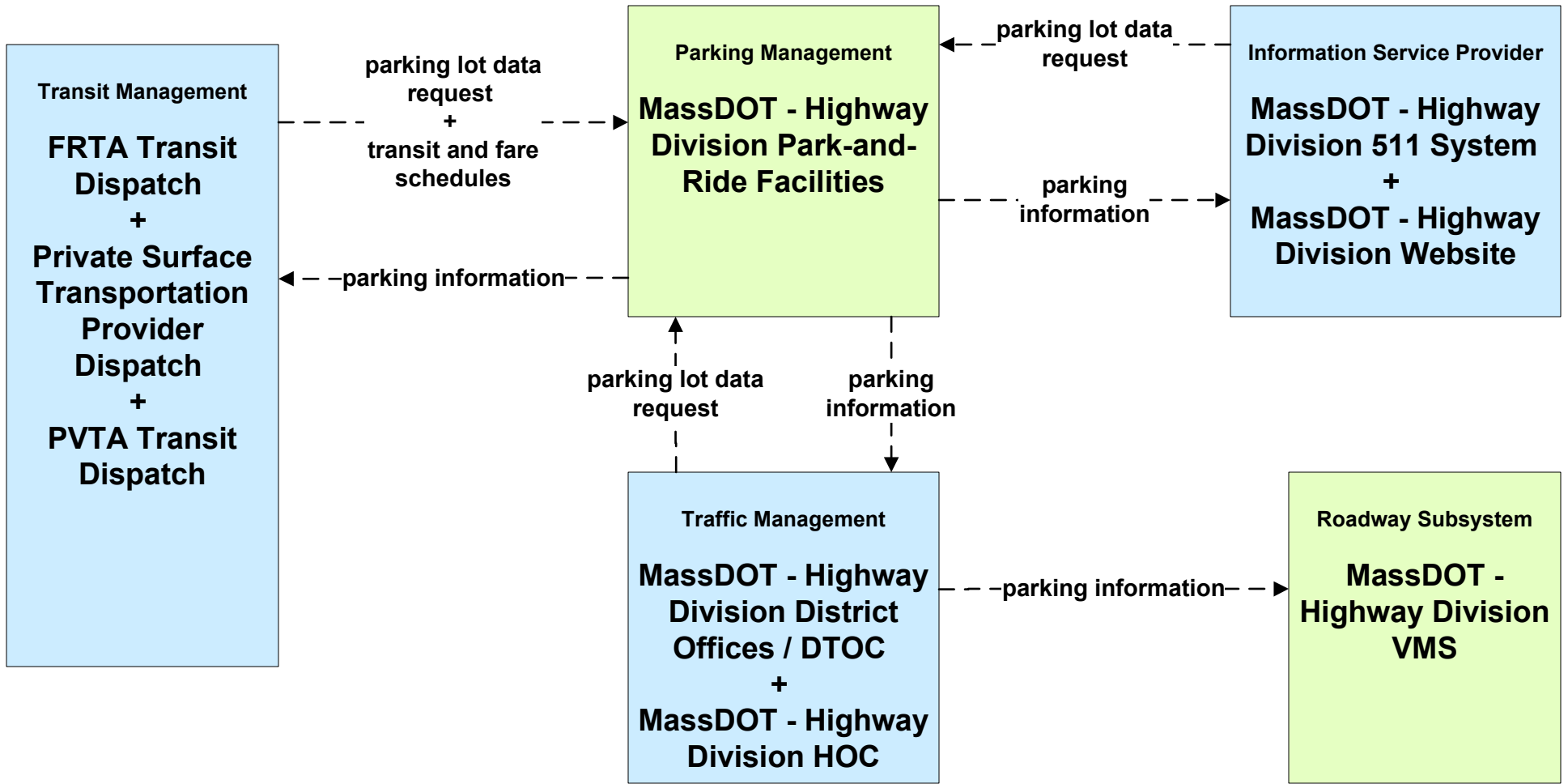
ATMS06 - Traffic Information Dissemination Local City/Town (1 of 2)



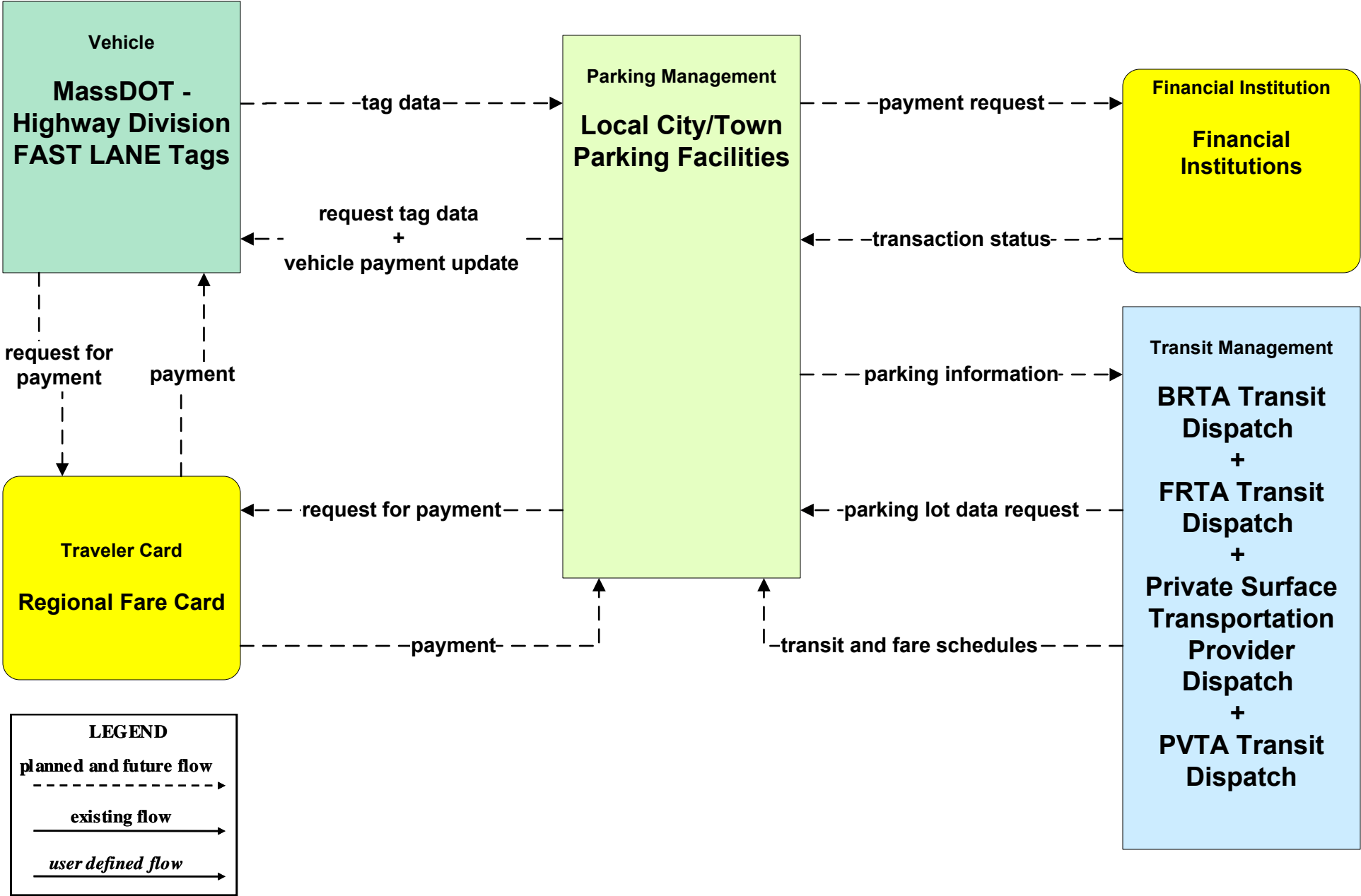
**ATMS08 - Incident Management
MassDOT - Highway Division (EM to Transit)**



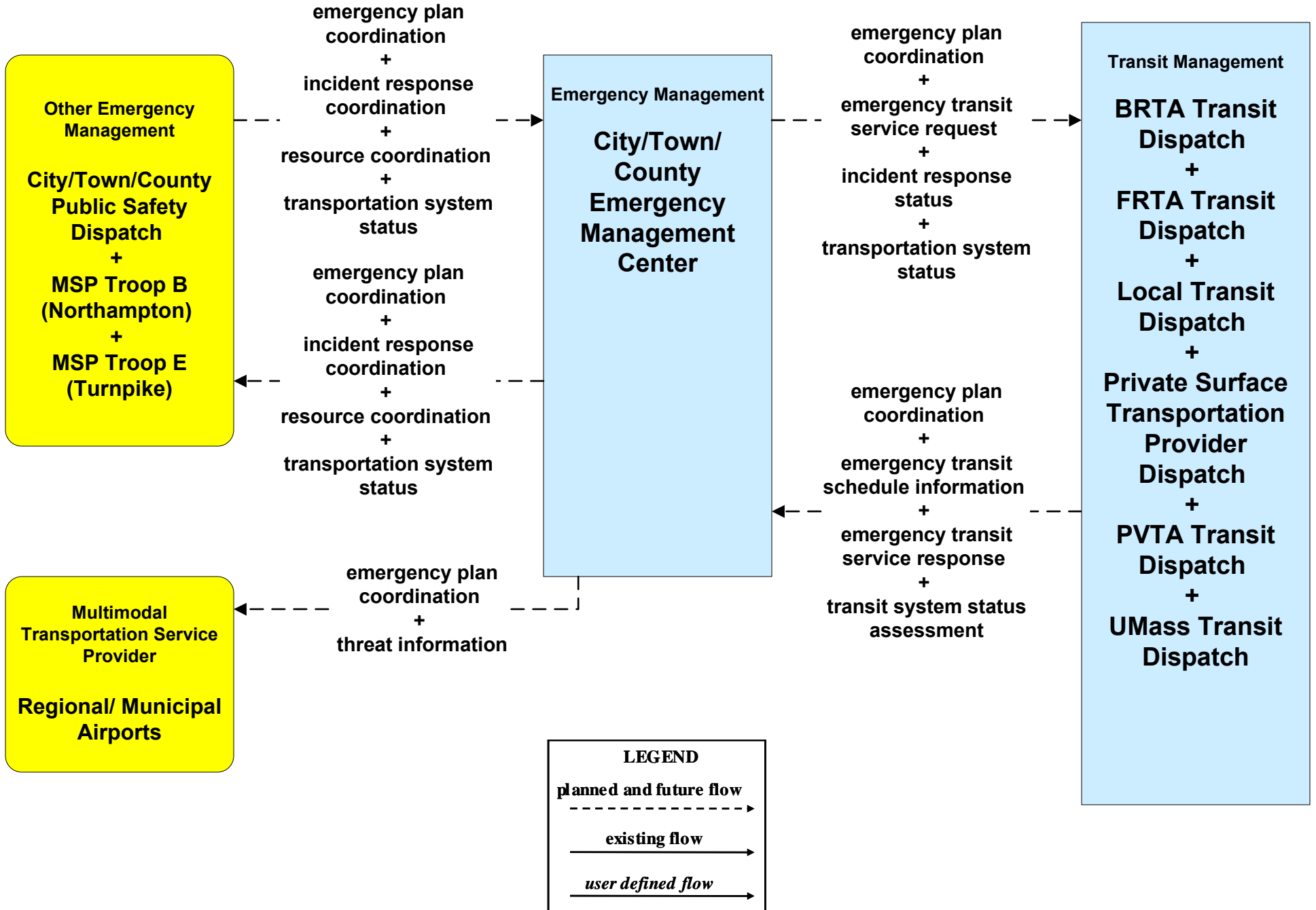
ATMS16 - Parking Facility Management MassDOT - Highway Division



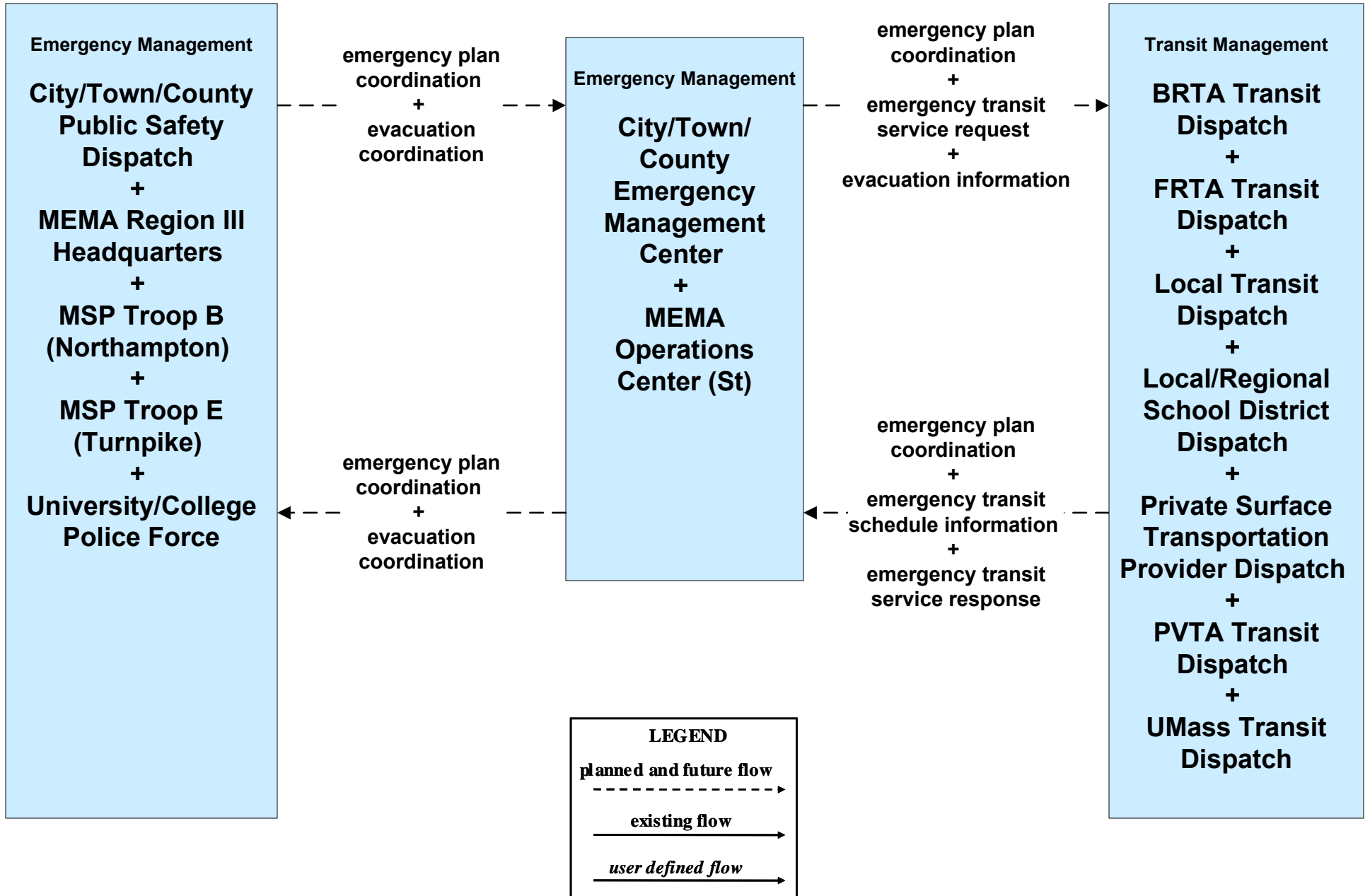
ATMS16 - Parking Facility Management Local City/Town



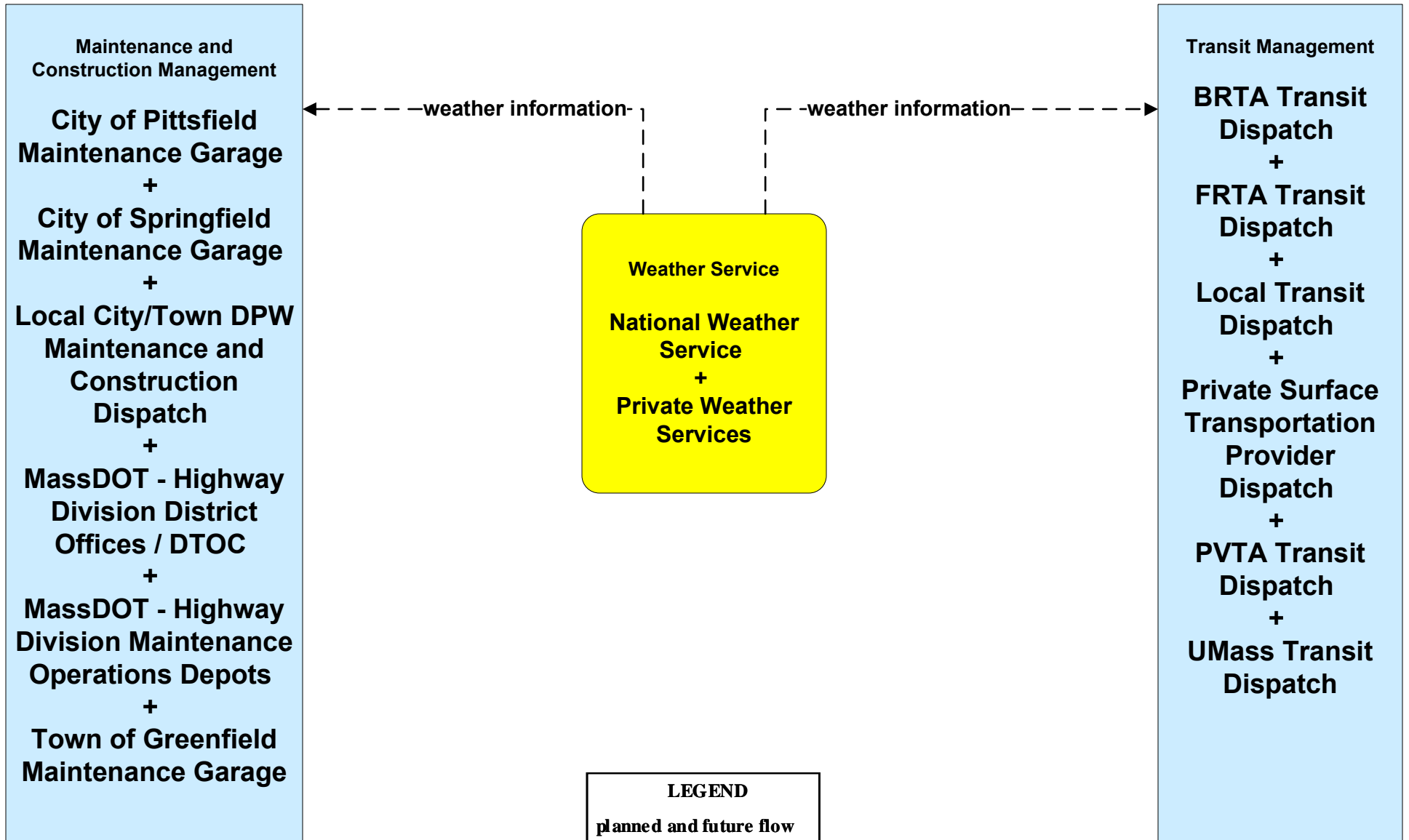
EM08 - Disaster Response City/Town/County (3 of 3)



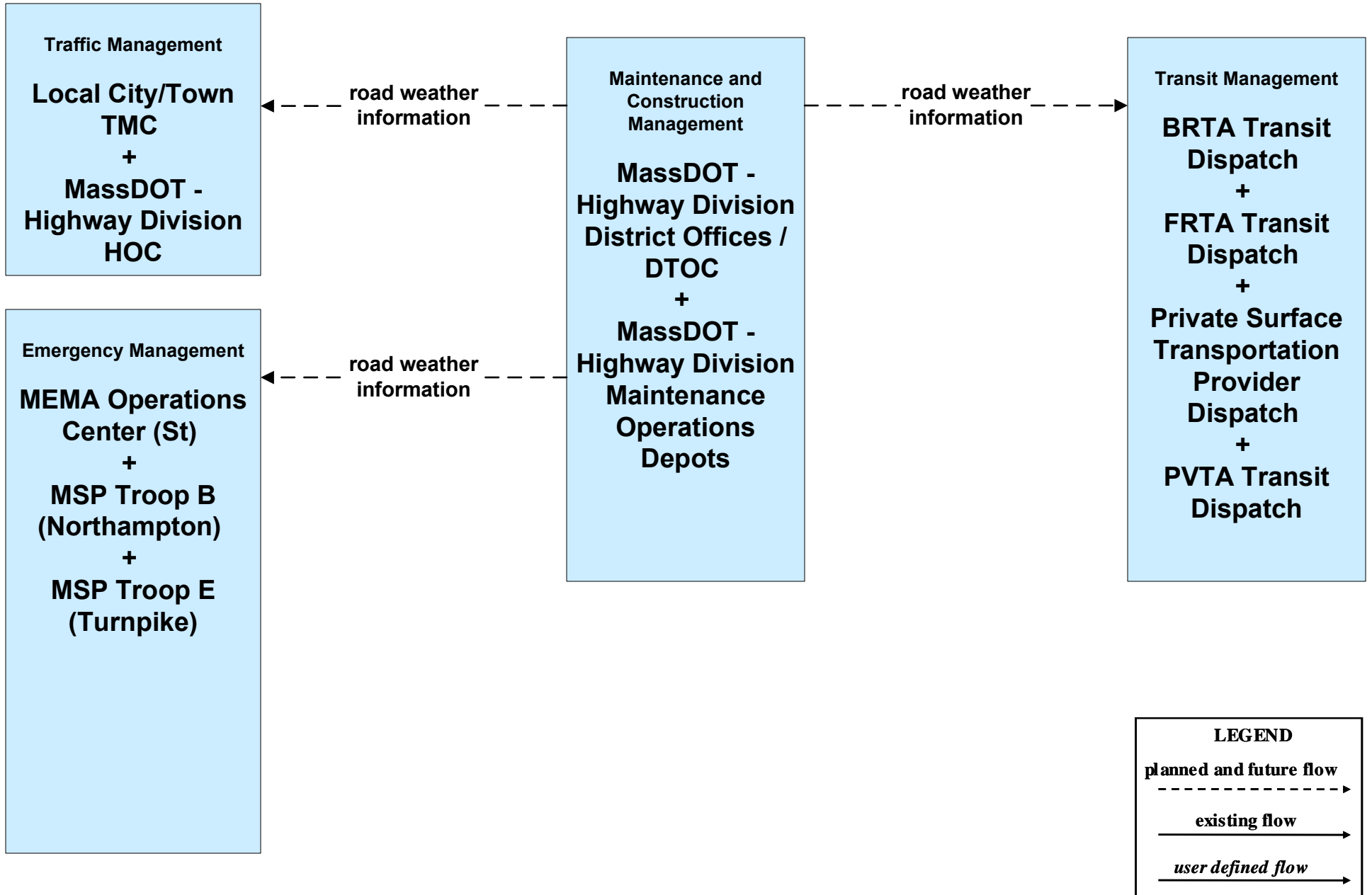
**EM09 - Evacuation and Reentry Management
MEMA (2 of 2) (EM to EM, EM to TRMS)**



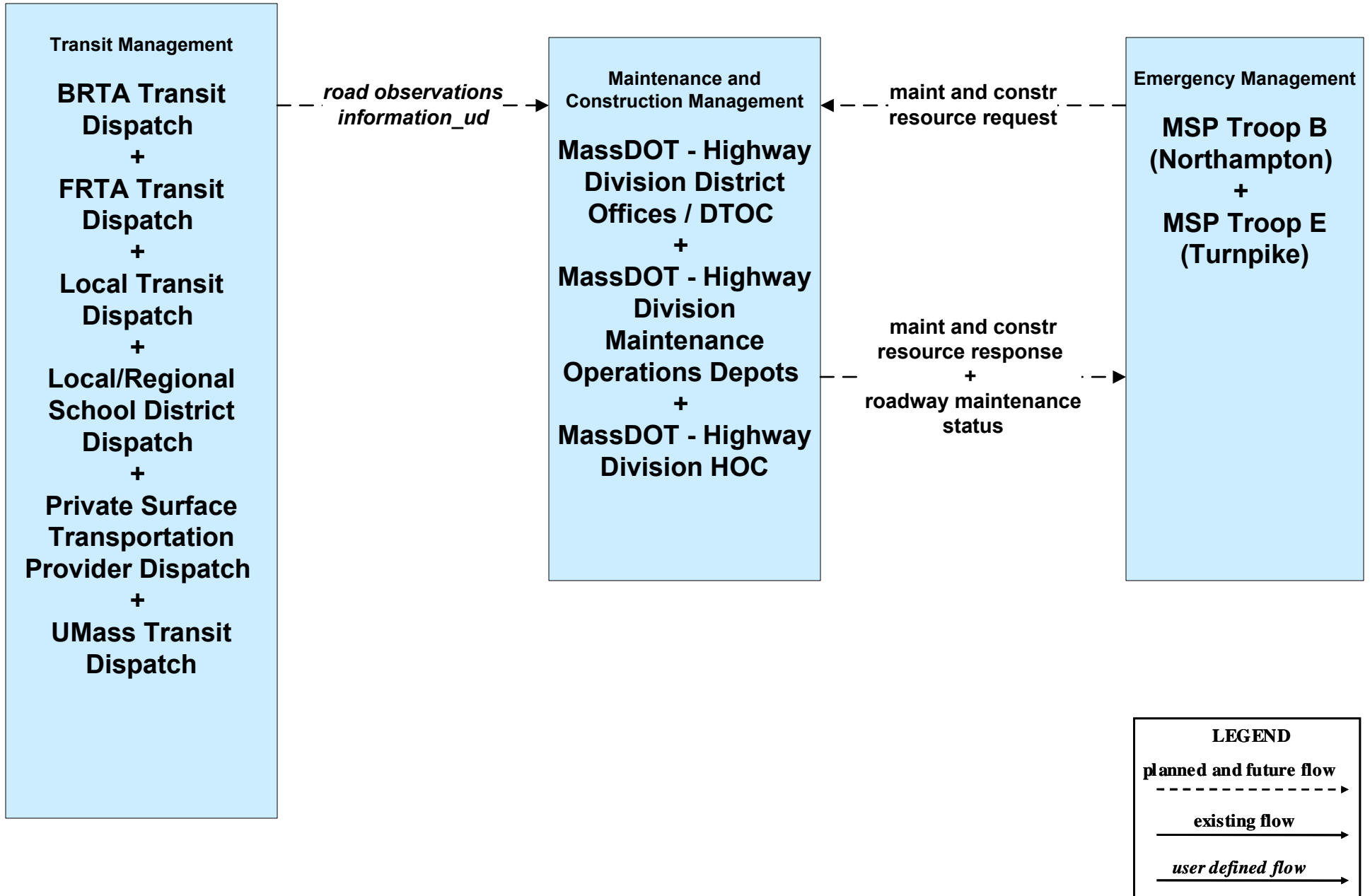
MC04 - Weather Information Processing and Distribution
Weather Services (1 of 2)



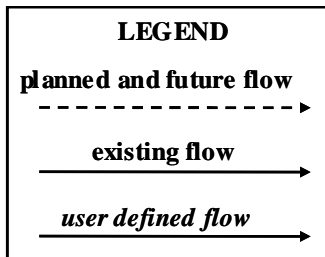
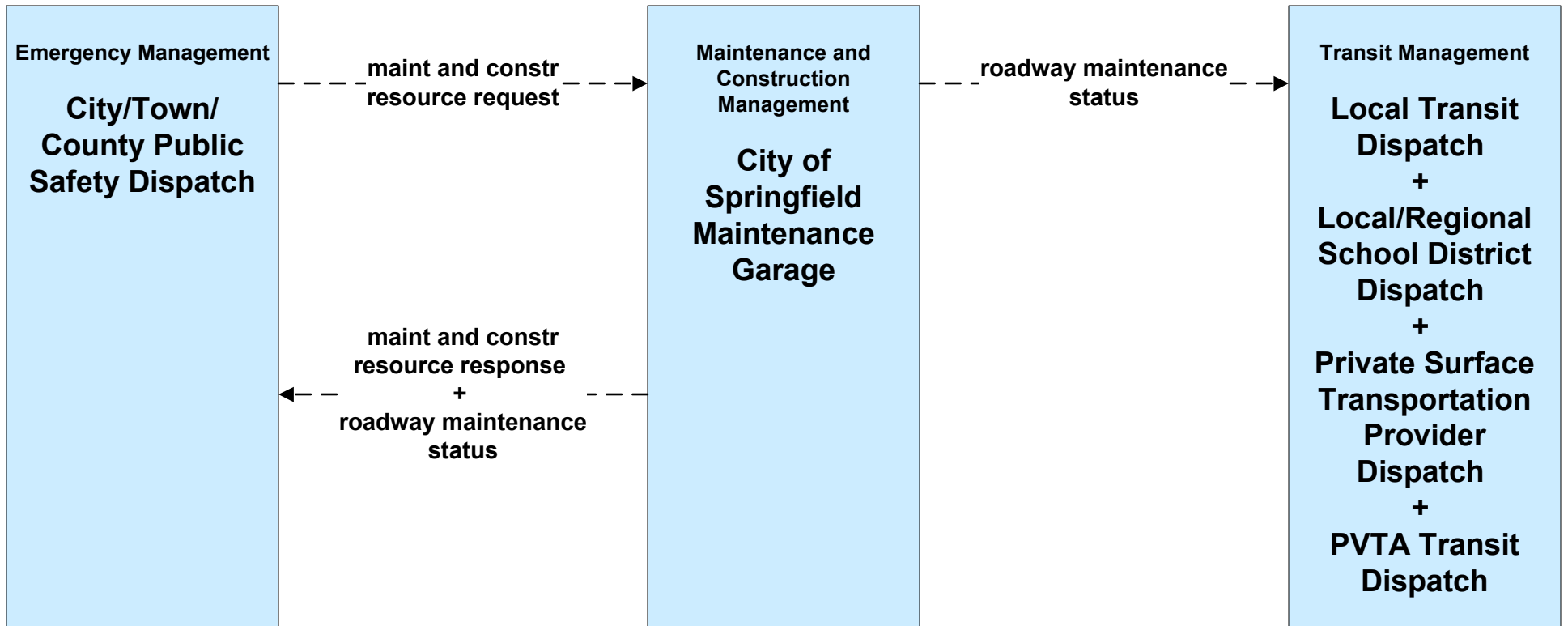
MC04 - Weather Information Processing and Distribution
MassDOT - Highway Division (1 of 2)



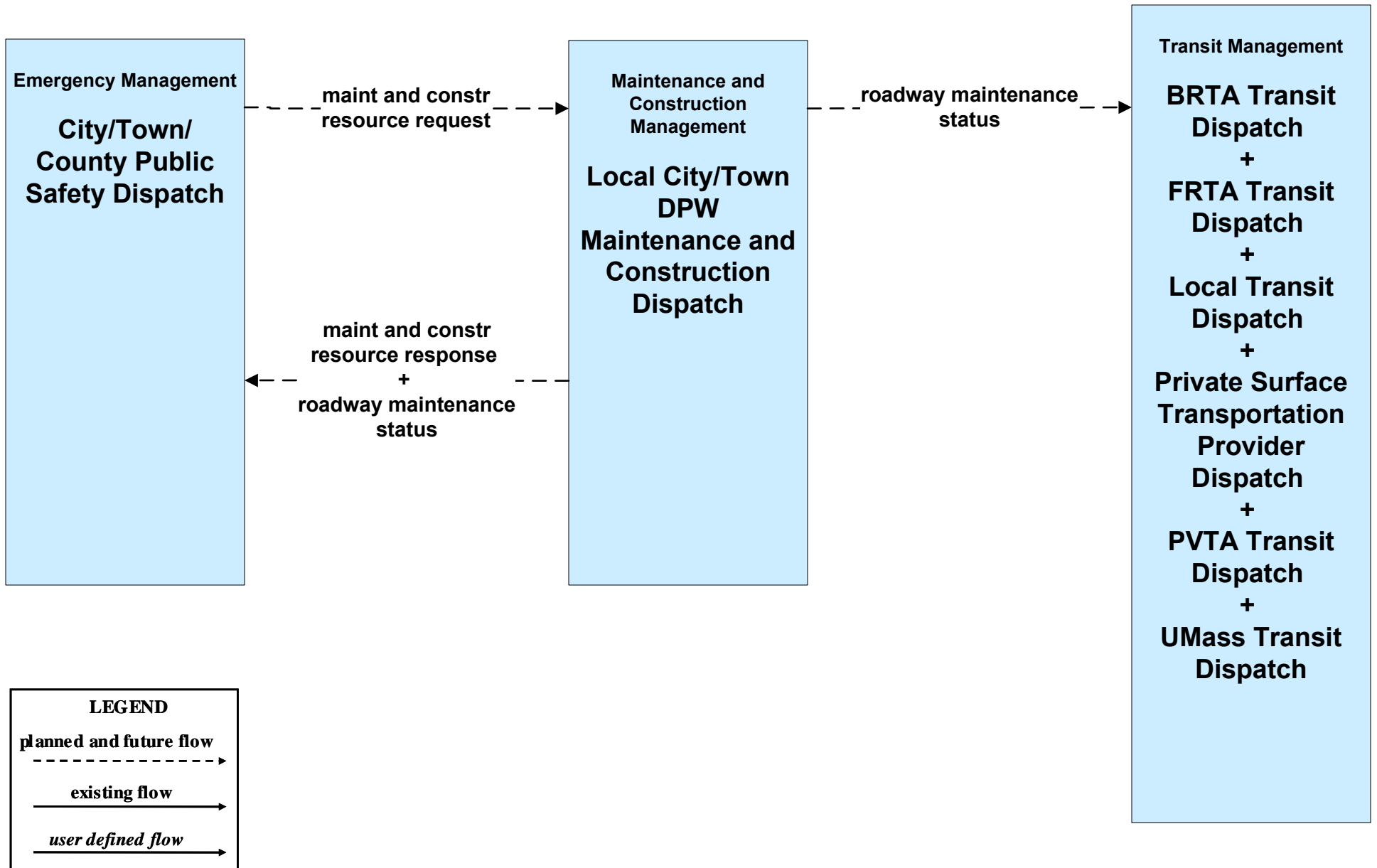
**MC06 - Winter Maintenance
MassDOT - Highway Division (2 of 2)**



**MC06 - Winter Maintenance
City of Springfield (2 of 2)**



**MC06 - Winter Maintenance
Local City/Town (2 of 2)**



**MC10 - Maintenance and Construction Activity Coordination
MassDOT - Highway Division (2 of 2)**

