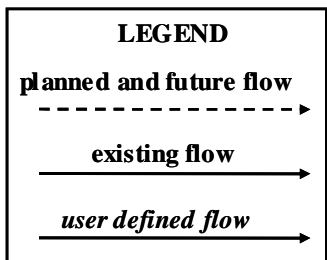
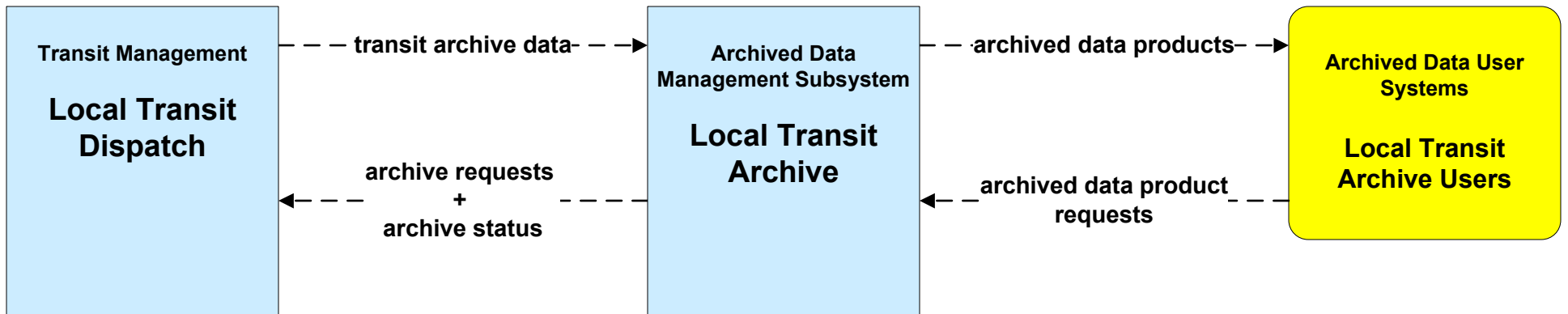
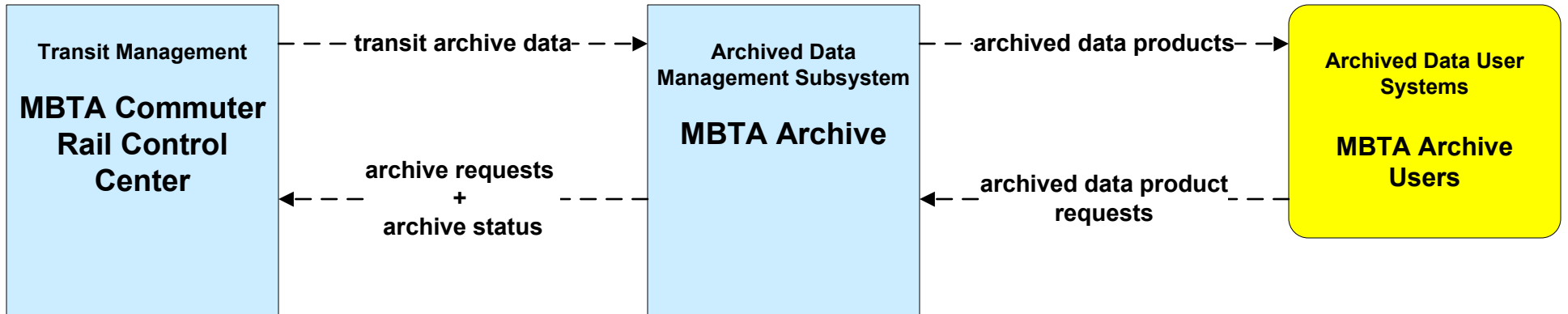
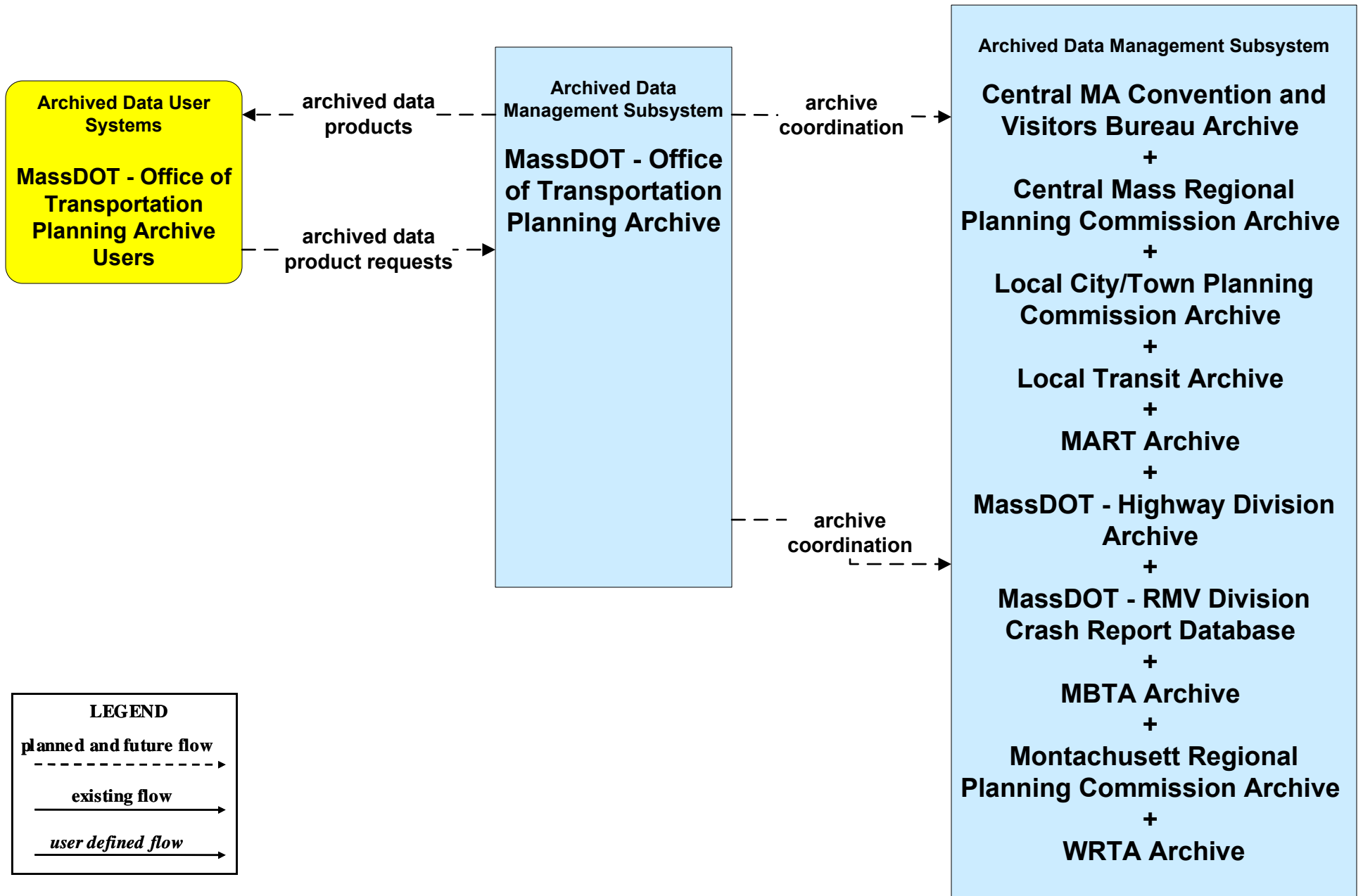


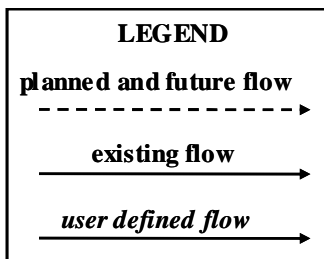
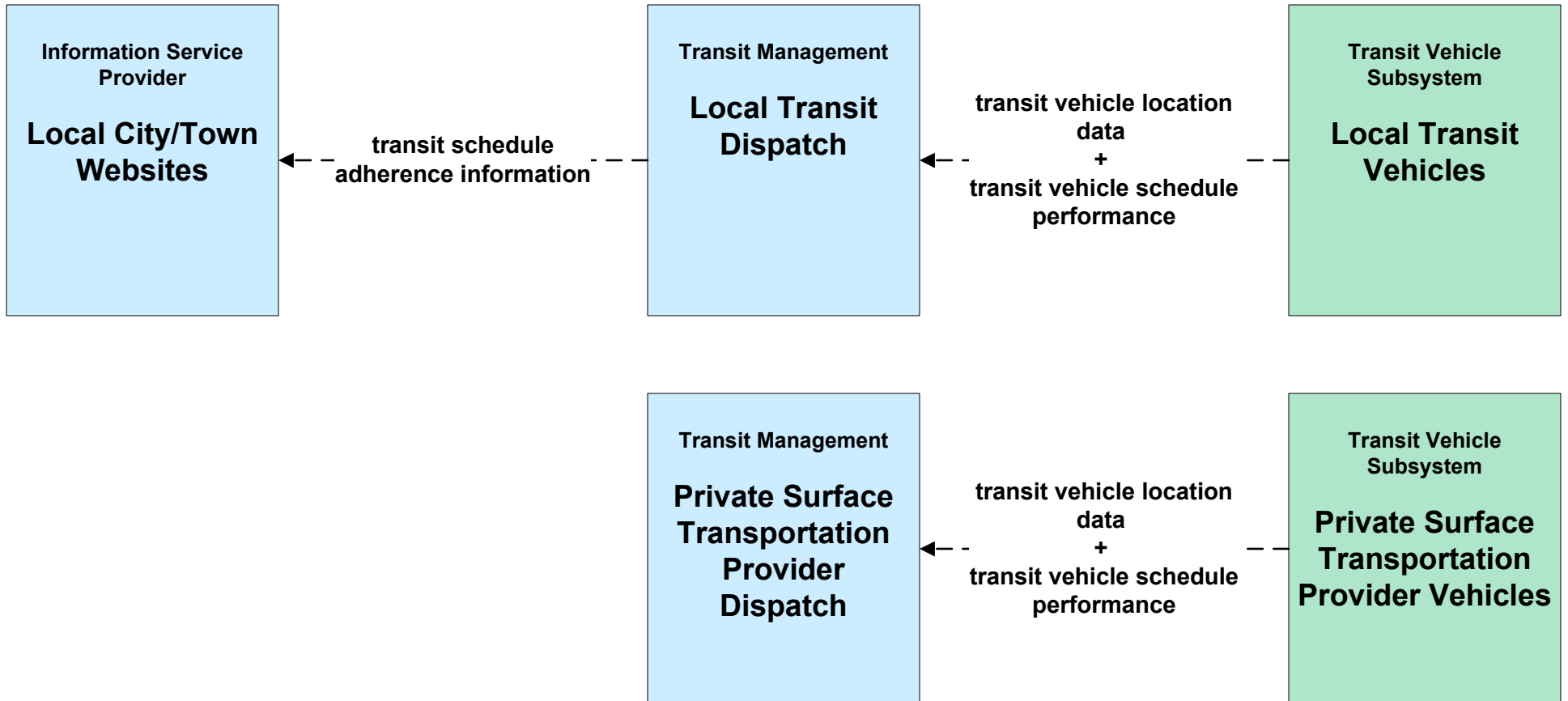
**AD1 - ITS Data Mart
Transit Databases (2 of 2)**



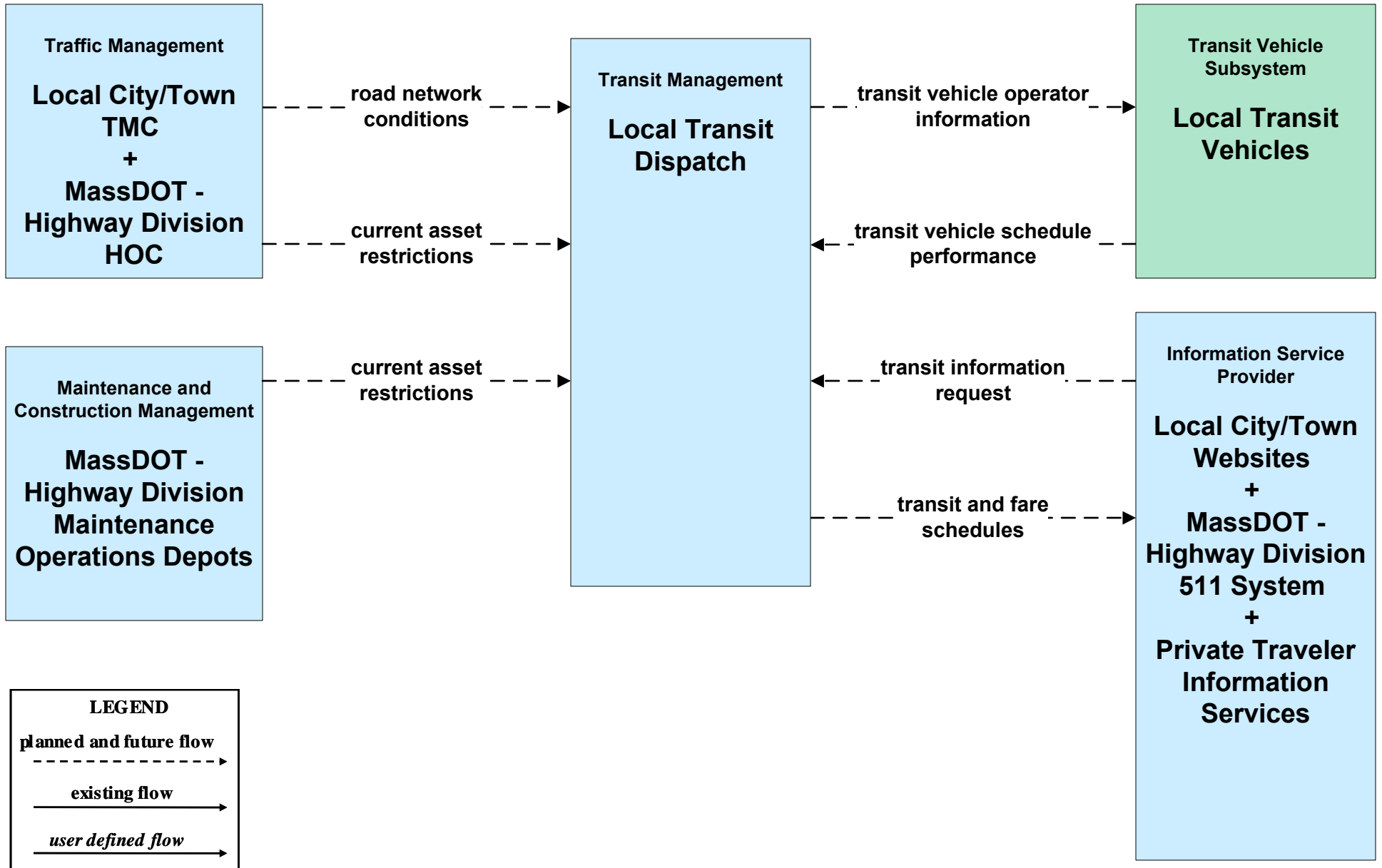
**AD3 - ITS Virtual Data Warehouse
MassDOT - Office of Transportation Planning**



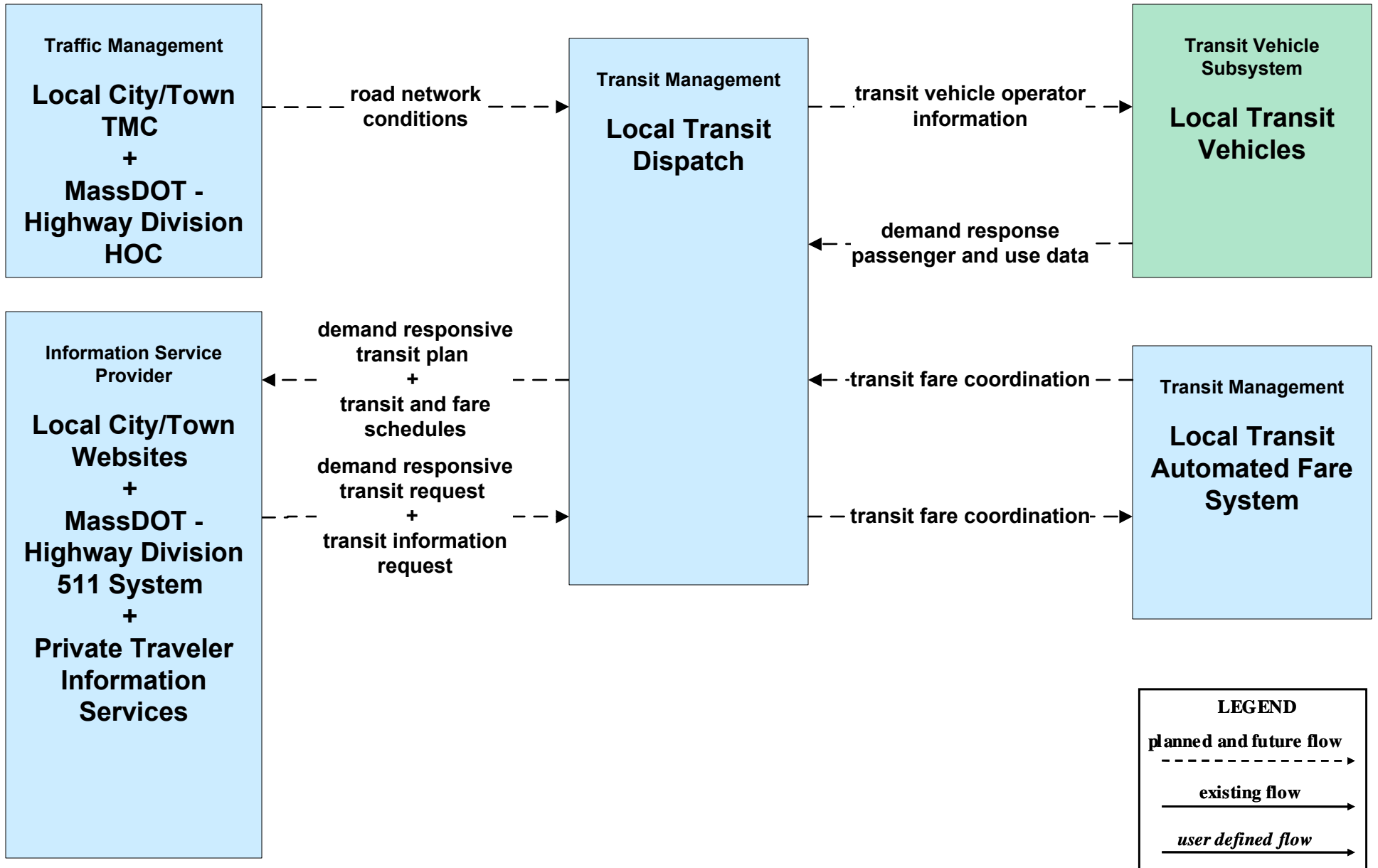
APTS01 - Transit Vehicle Tracking Regional Transit Authorities



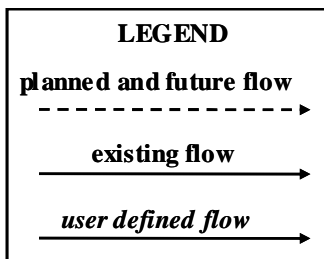
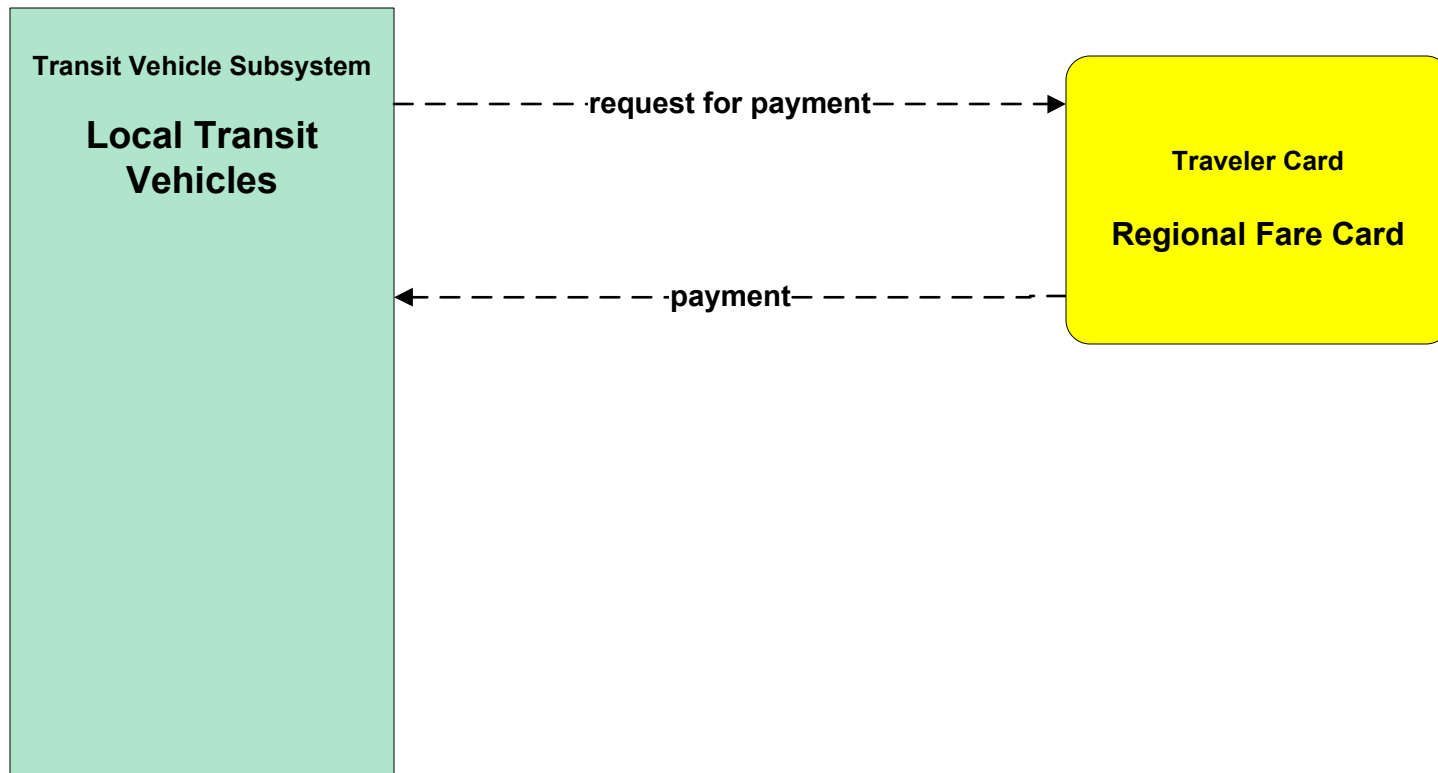
APTS02 - Transit Fixed-Route Operations Local Transit



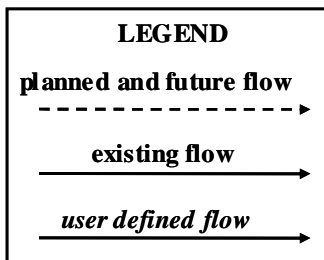
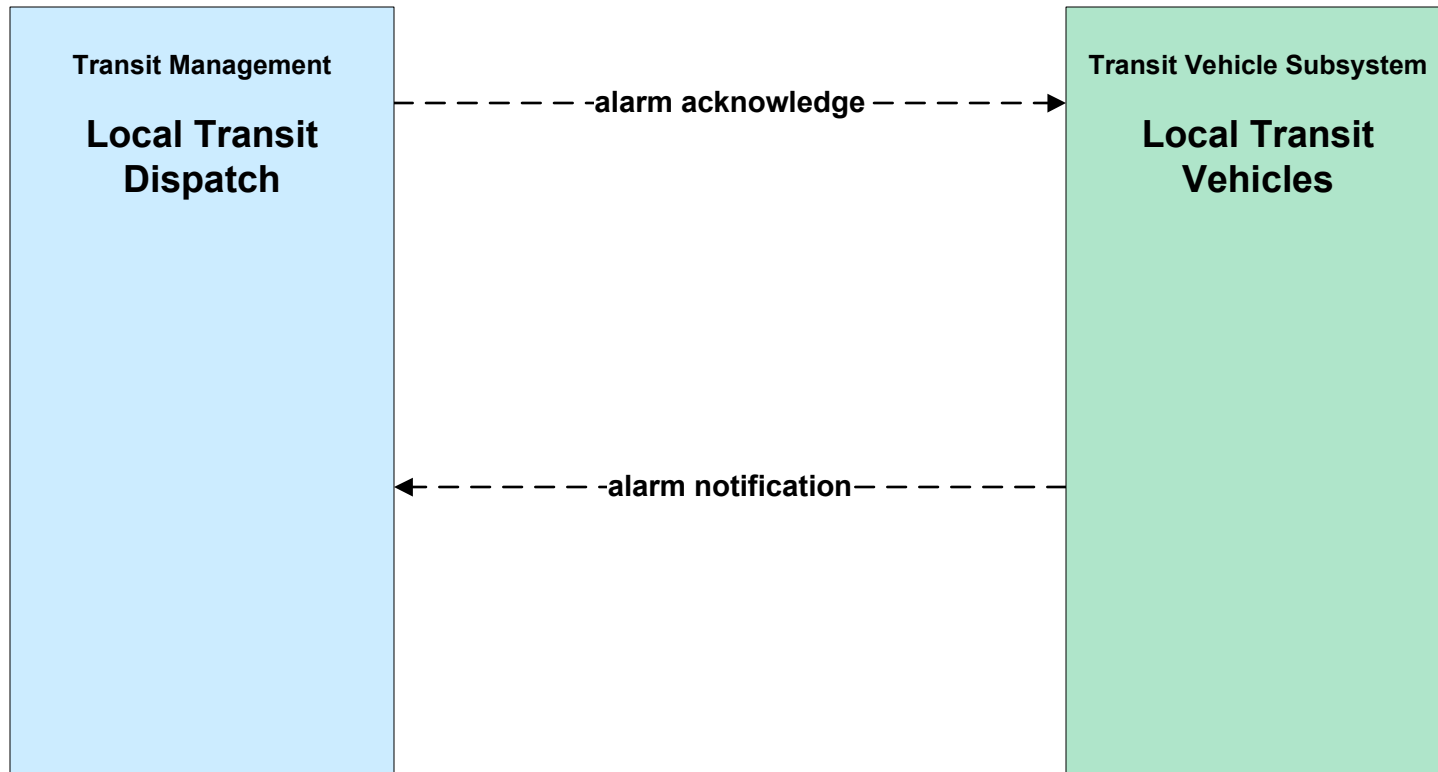
APTS03 - Demand Response and Paratransit Operations Local Transit



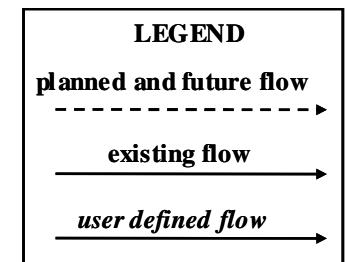
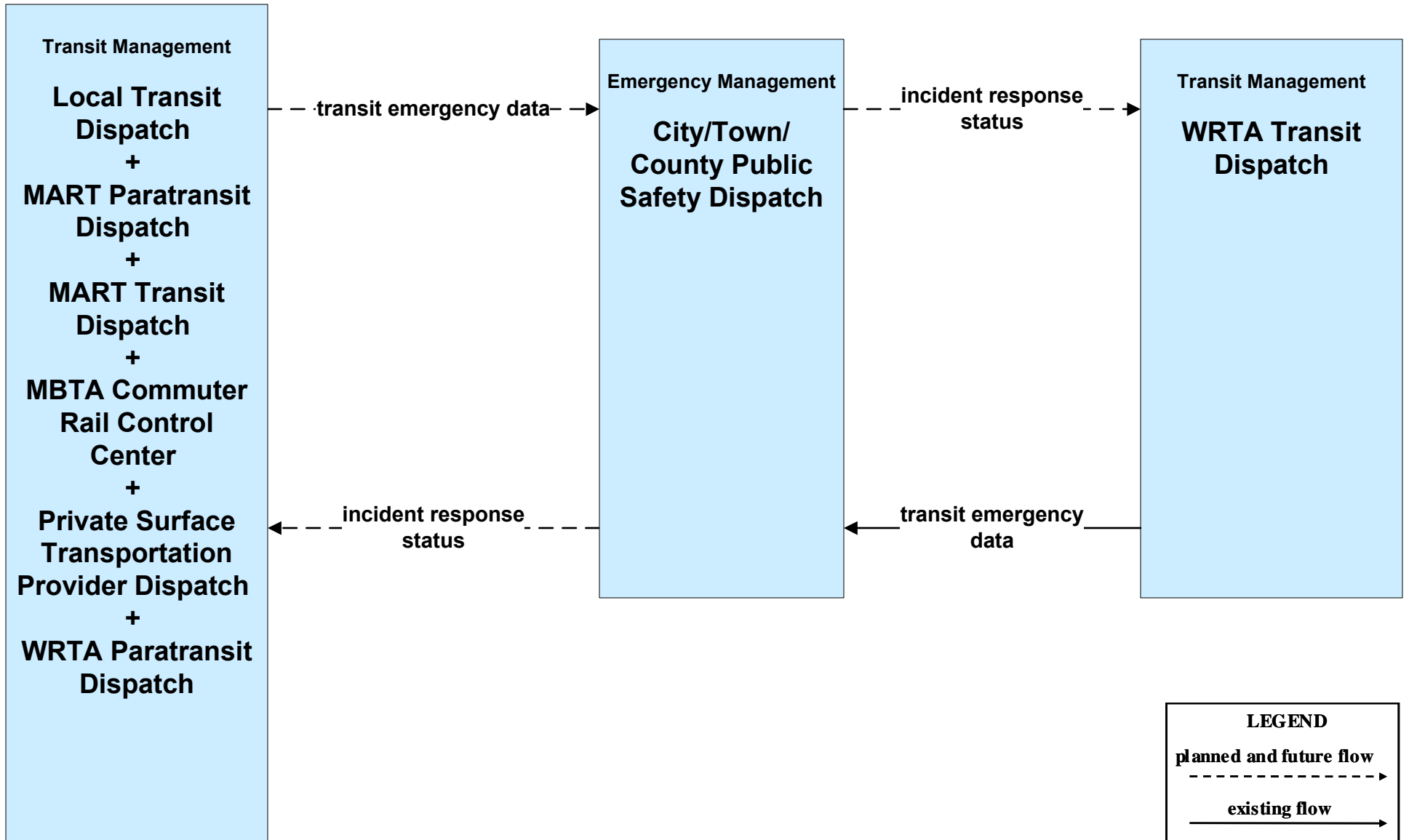
**APTS04 - Transit Passenger and Fare Payment
Other Transit**



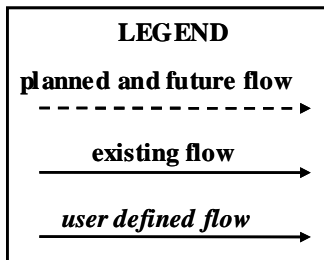
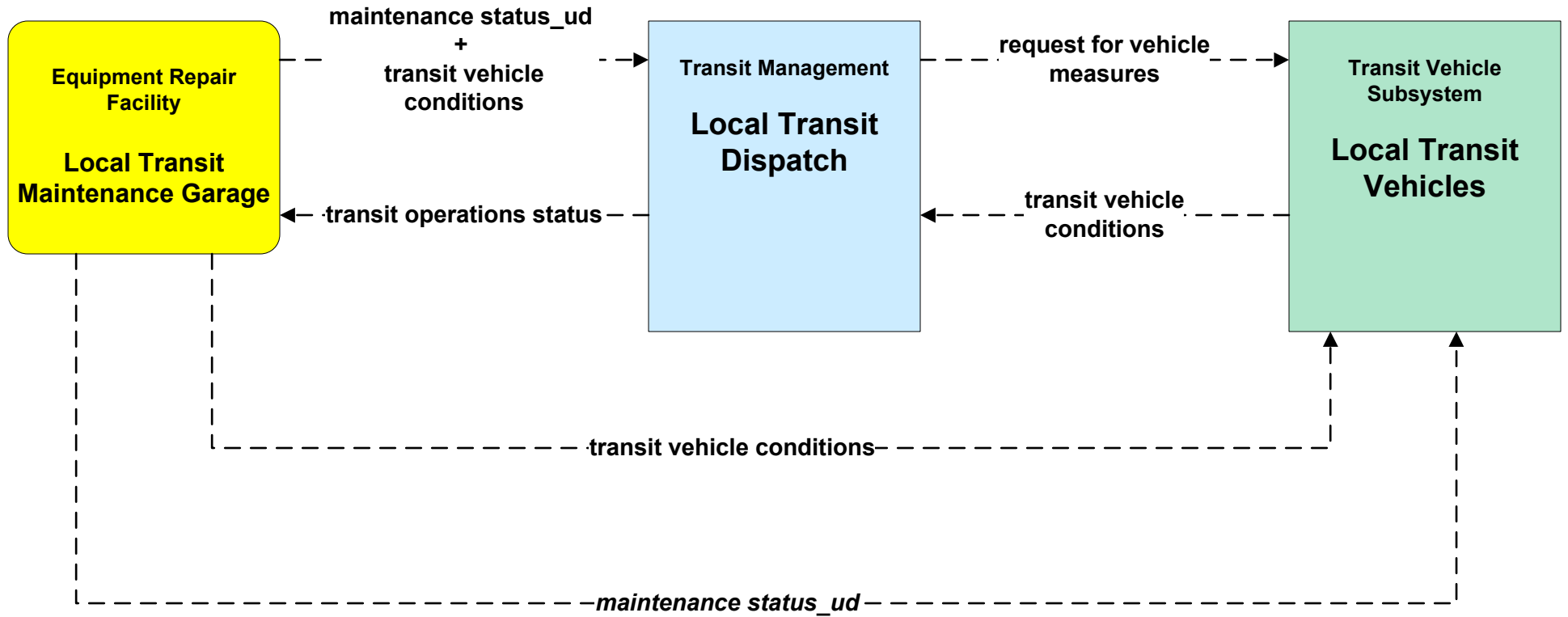
**APTS05 - Transit Security
Local Transit**



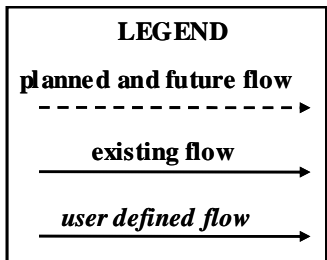
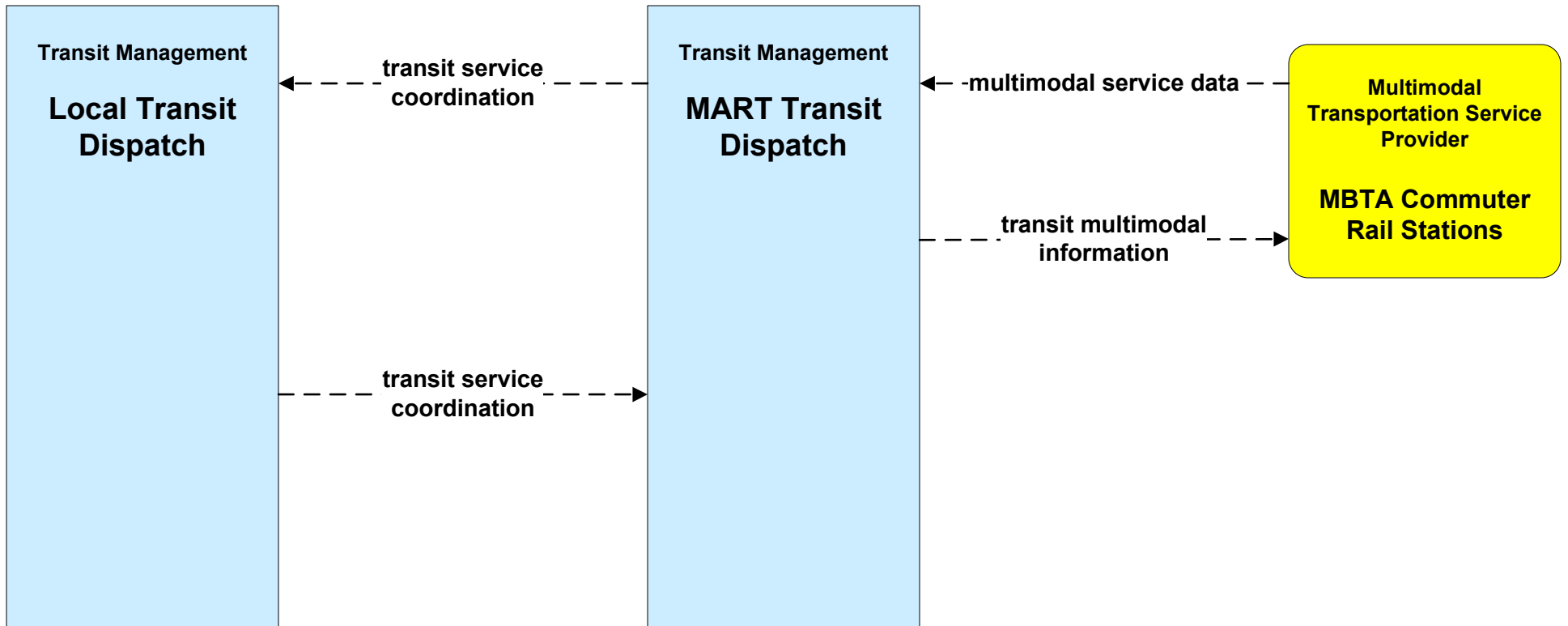
APTS05 - Transit Security City/Town/County



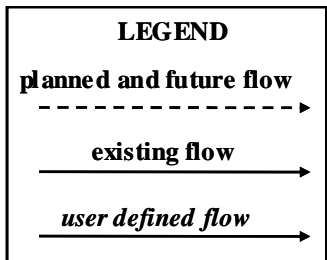
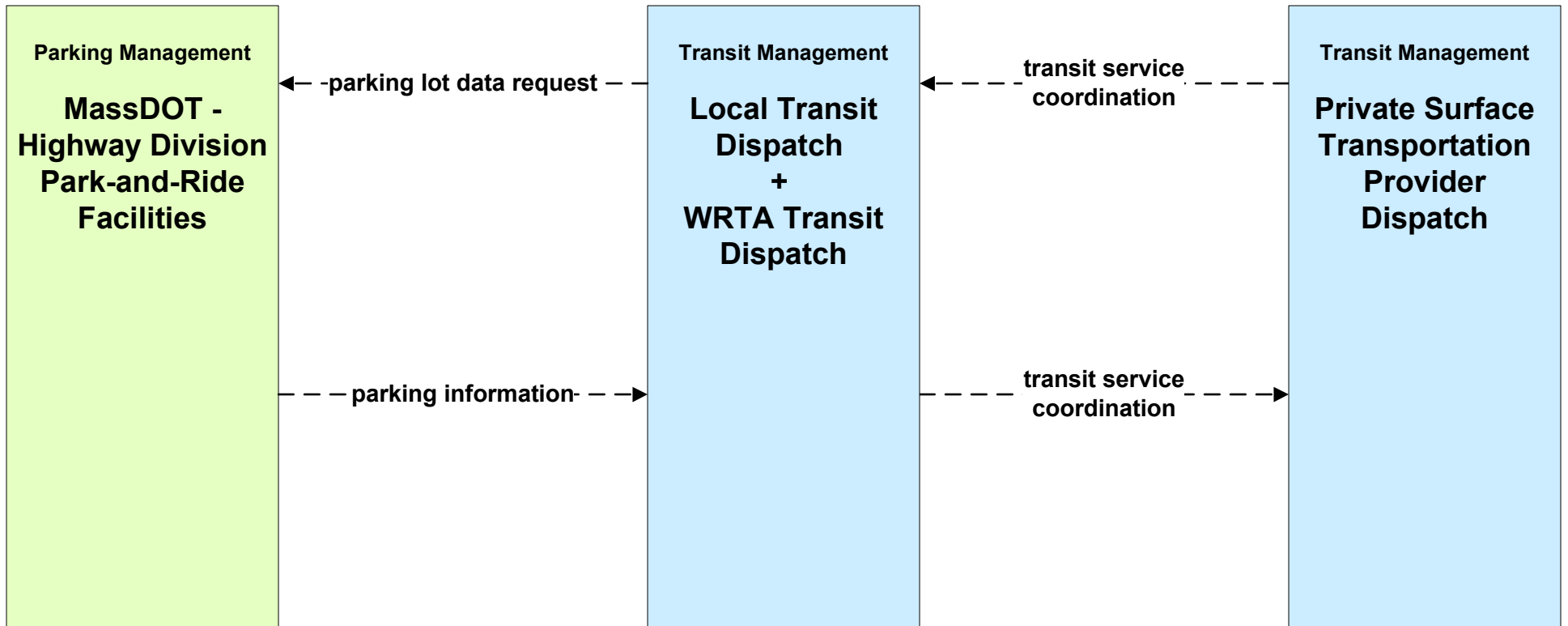
APTS06 - Transit Vehicle Maintenance Local Transit



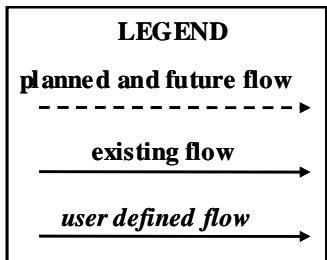
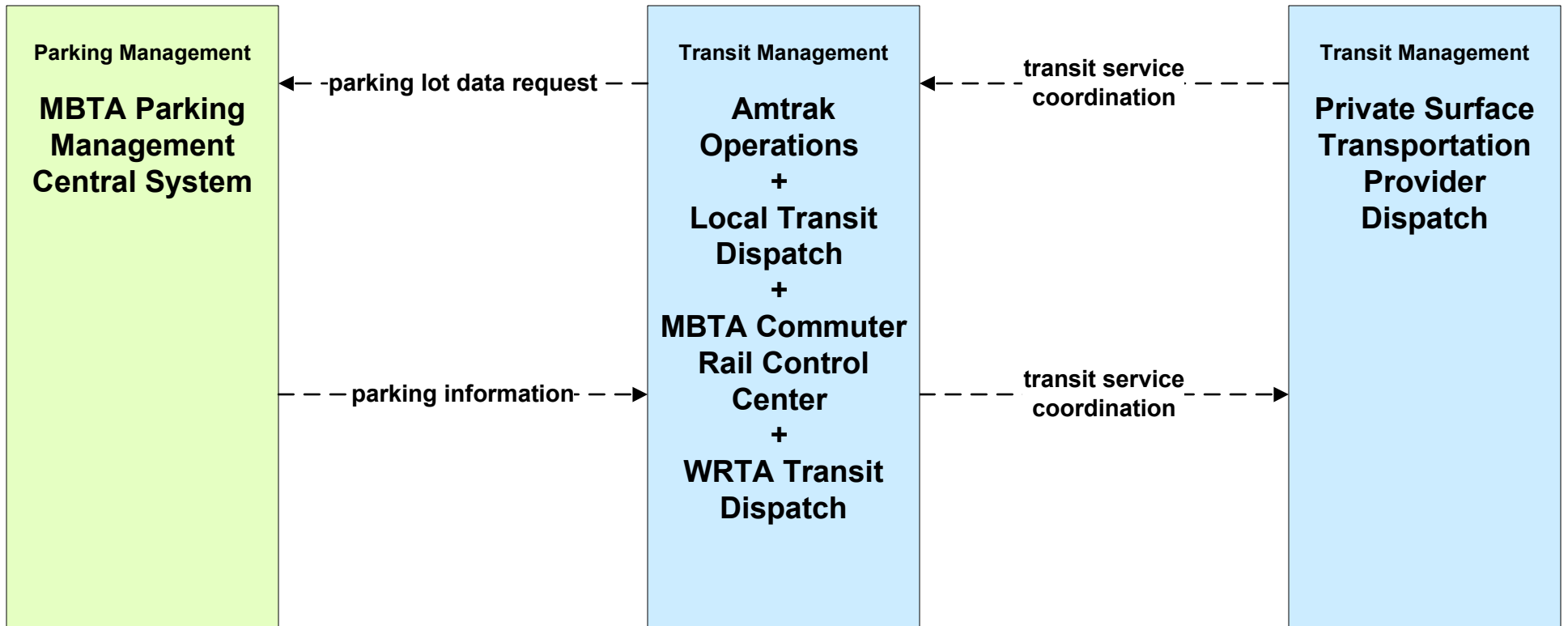
**APTS07 - Multimodal Coordination
MART**



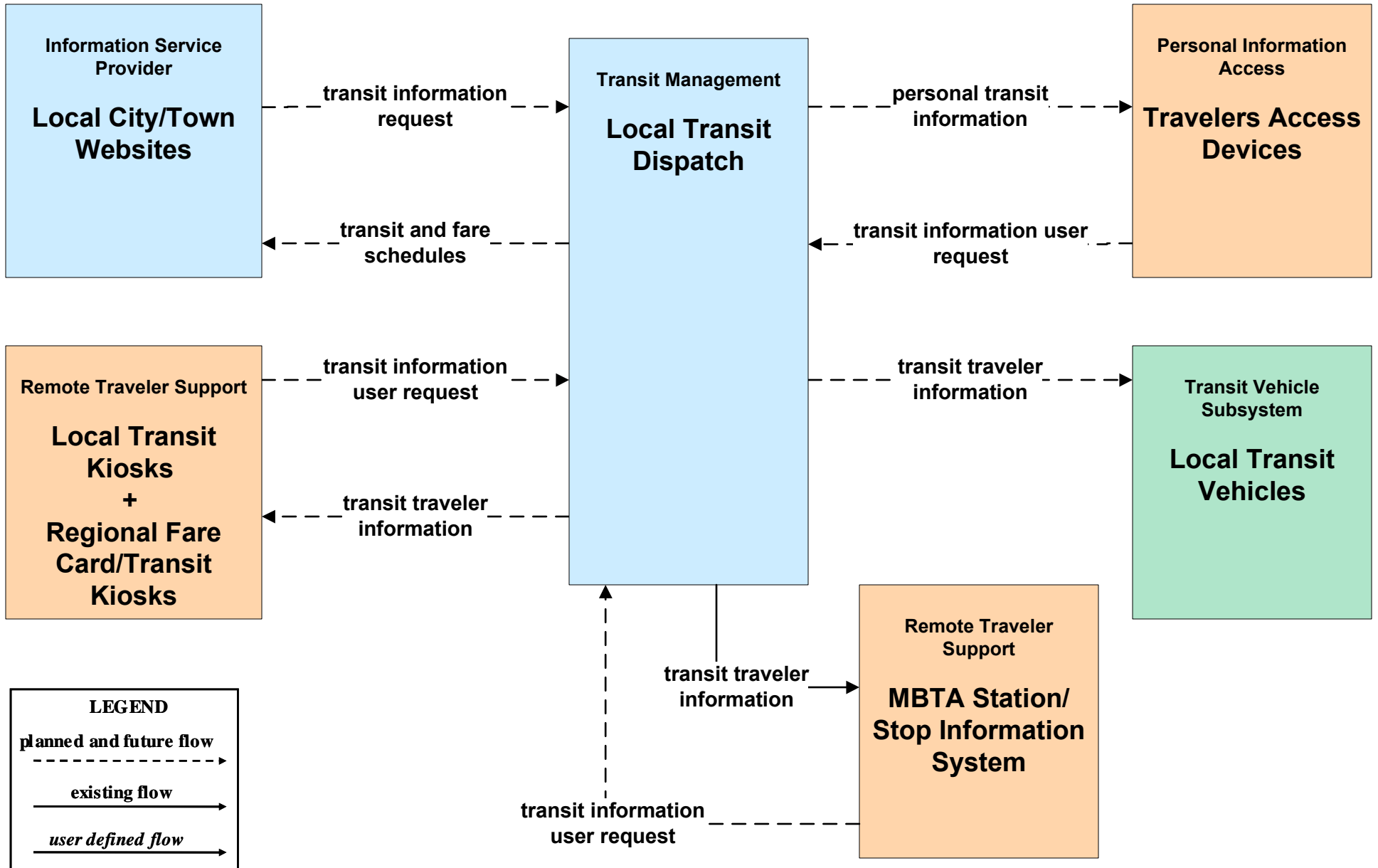
**APTS07 - Multimodal Coordination
MassDOT - Highway Division**



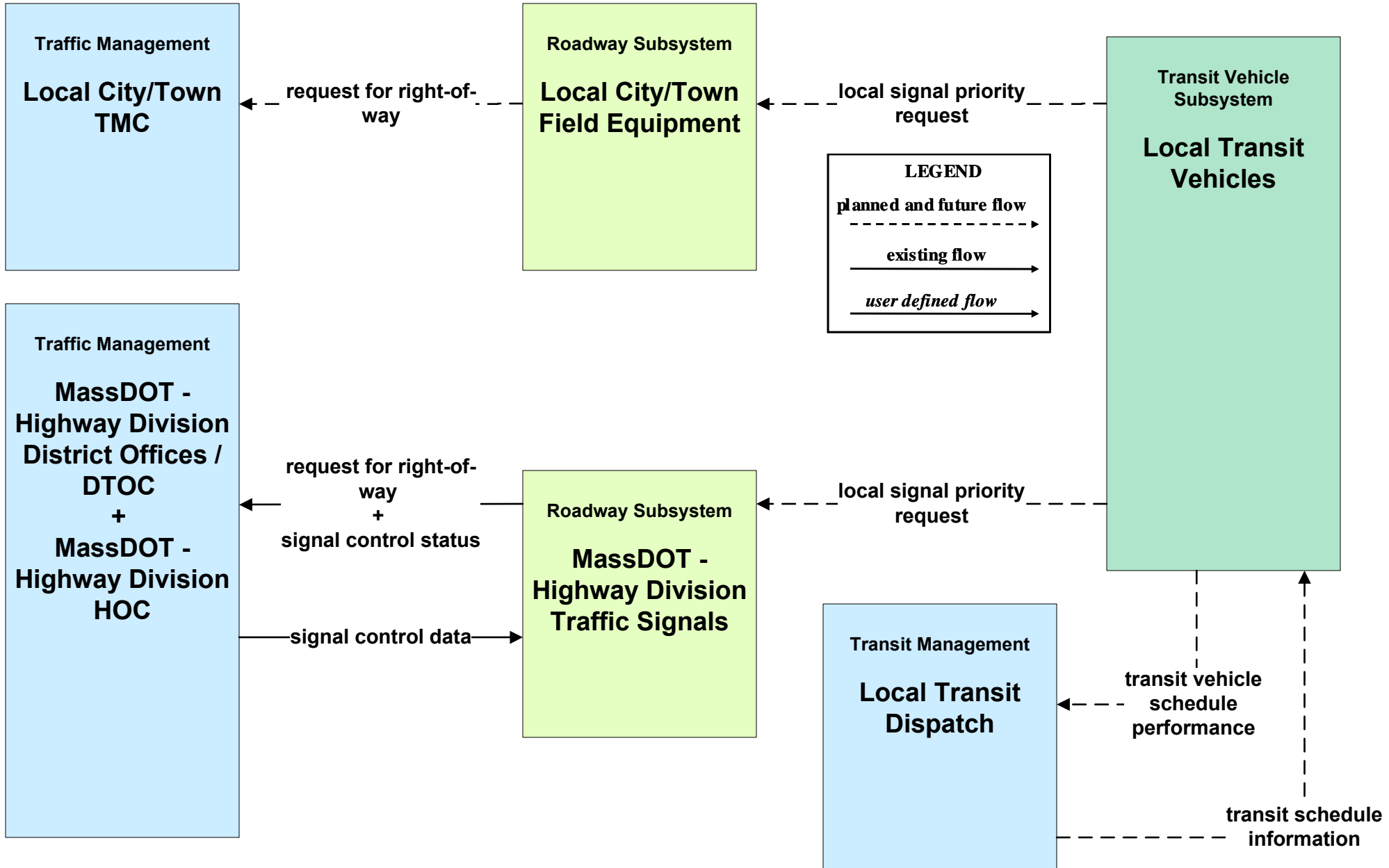
**APTS07 - Multimodal Coordination
MBTA**



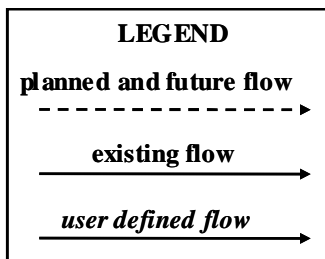
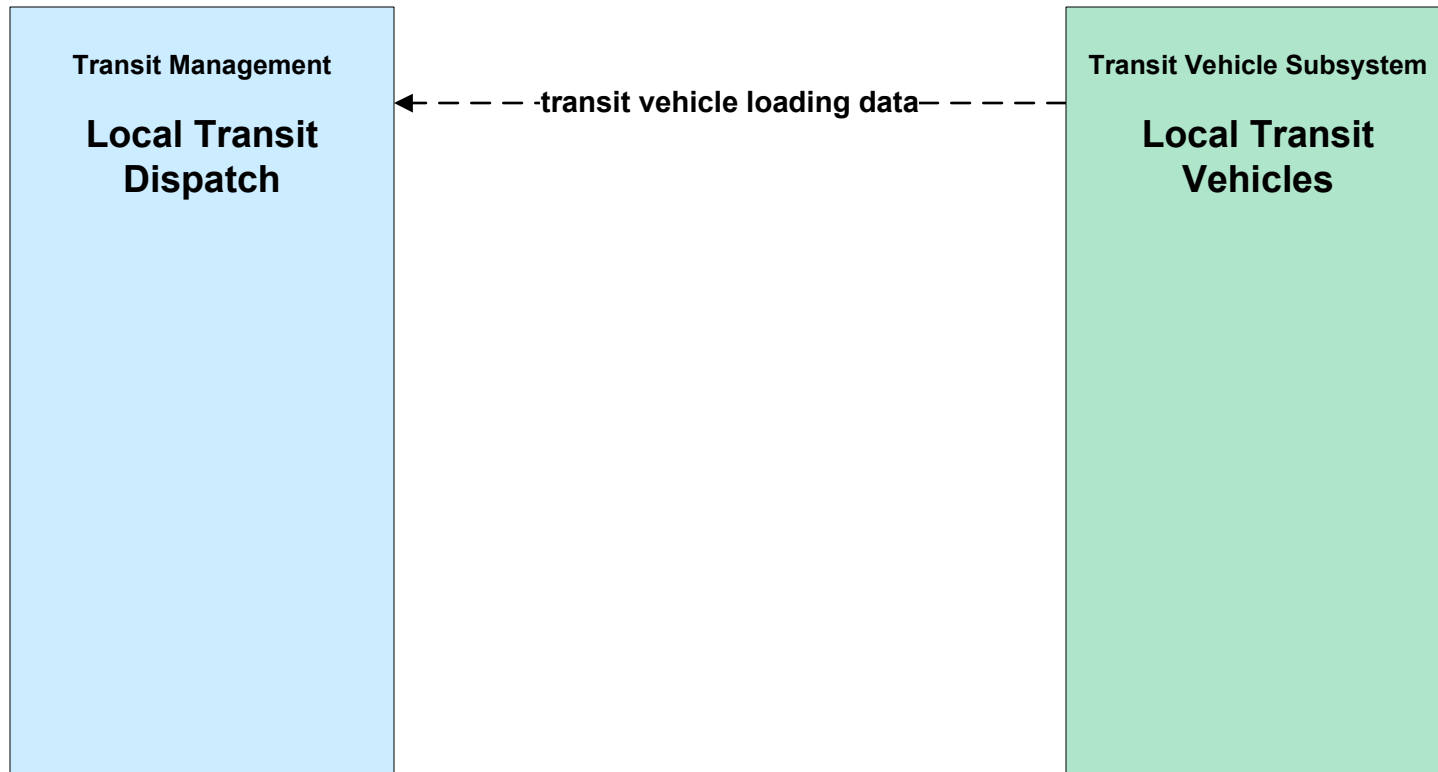
APTS08 - Transit Traveler Information Local Transit



APTS09 - Transit Signal Priority Local Transit

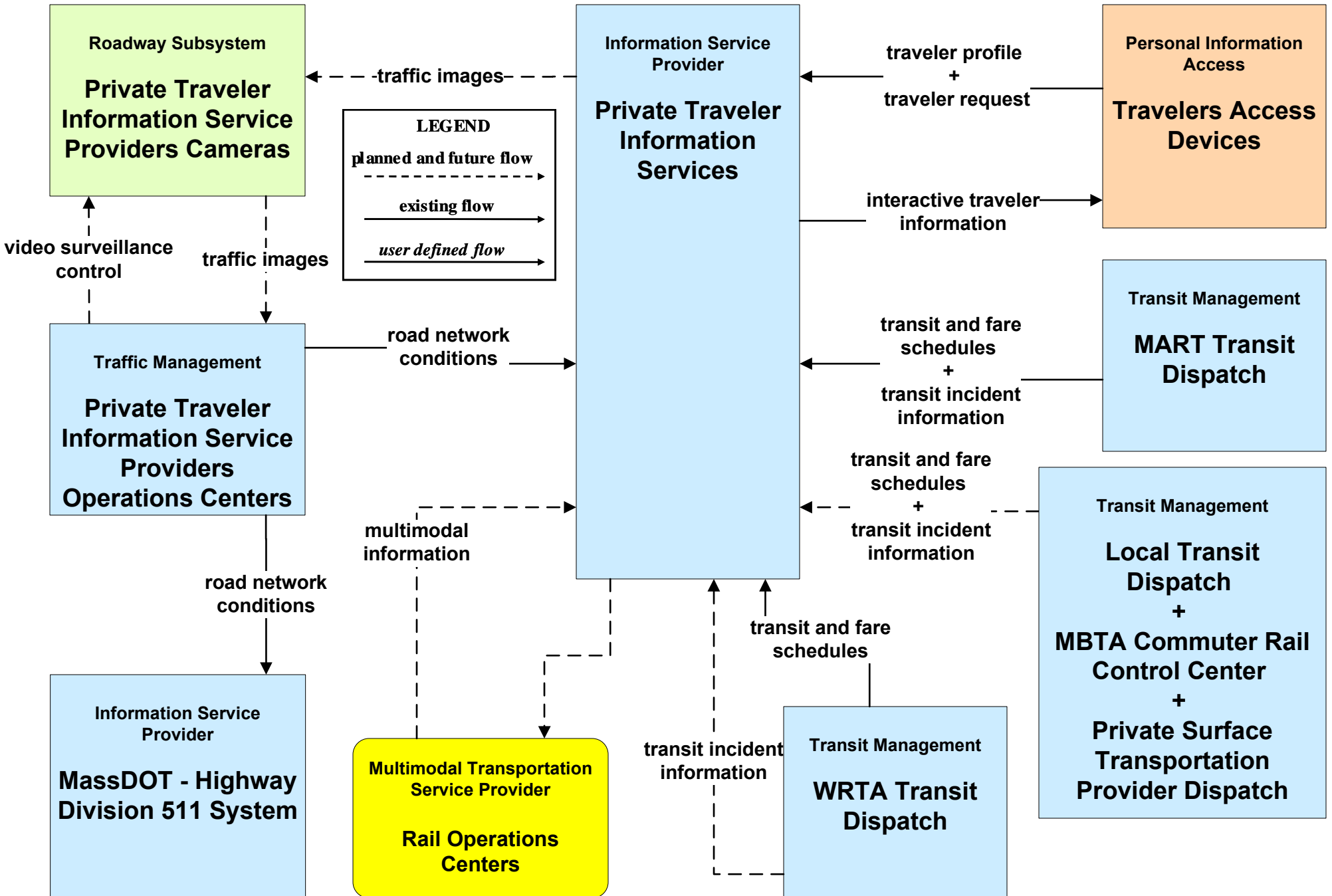


**APTS10 - Automated Passenger Counting
Local Transit**



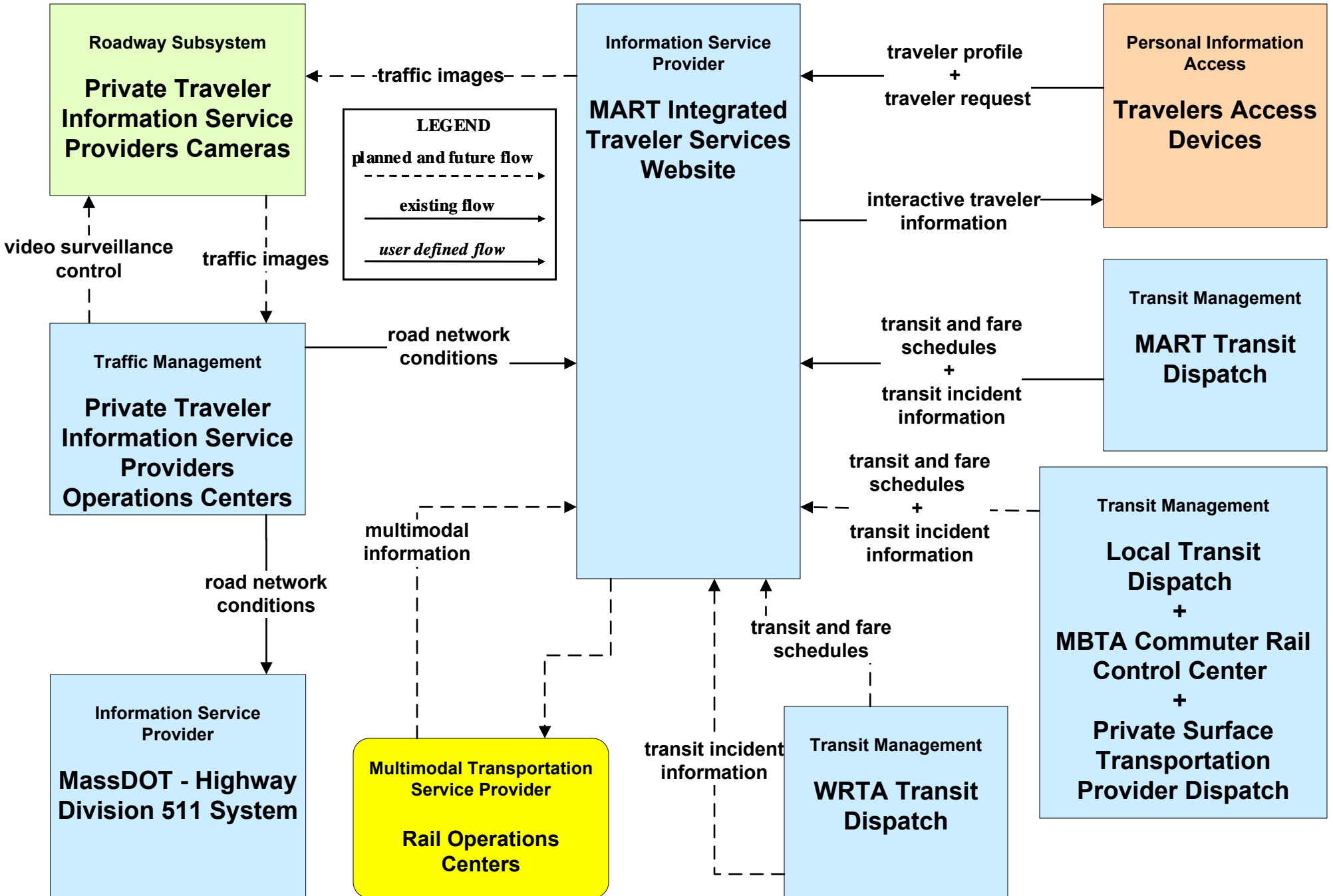
ATIS02 - Interactive Traveler Information

MART / Private Traveler Information Service Providers (Part 1 of 2)

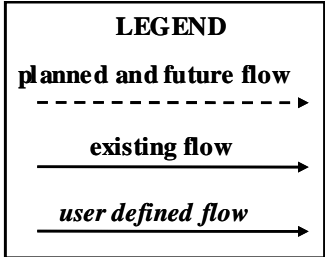
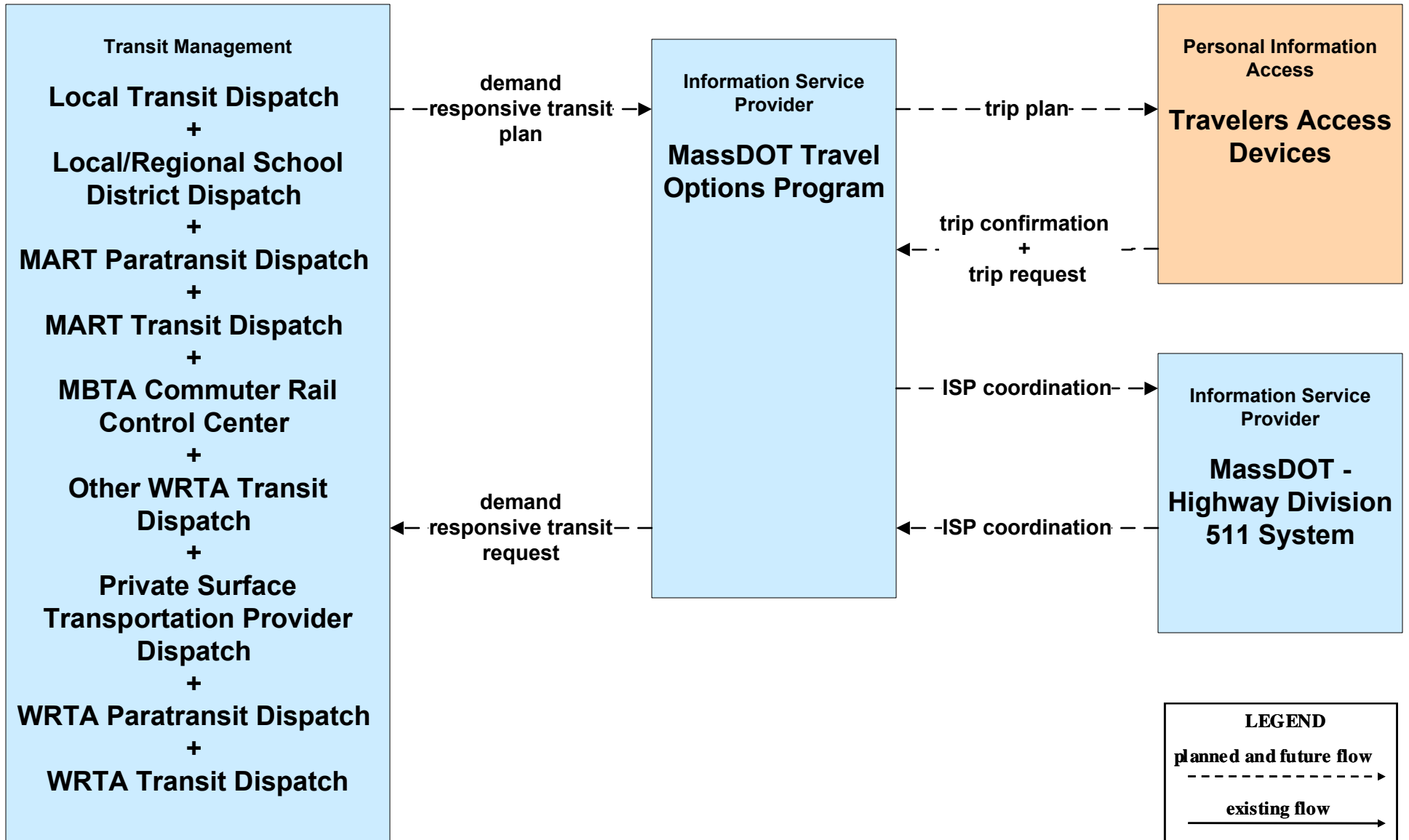


ATIS02 - Interactive Traveler Information

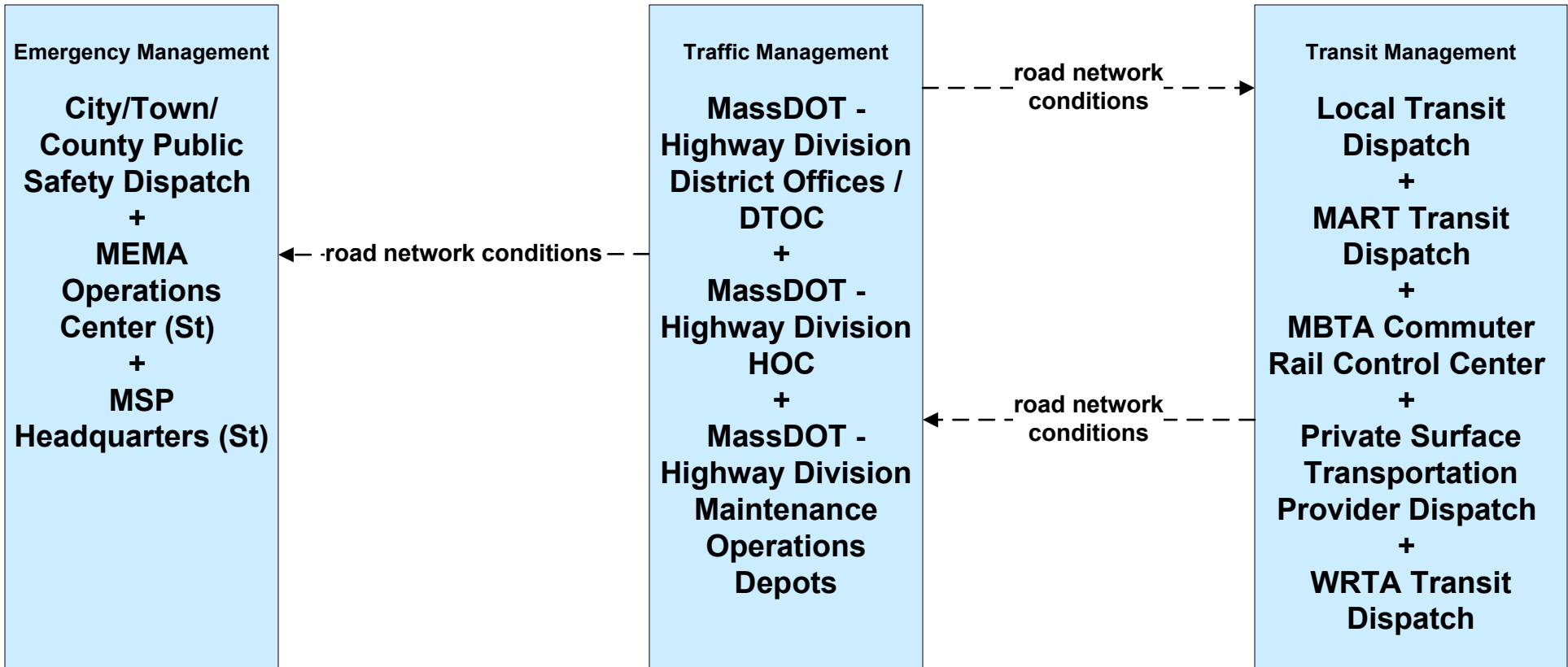
MART / Private Traveler Information Service Providers (Part 2 of 2)



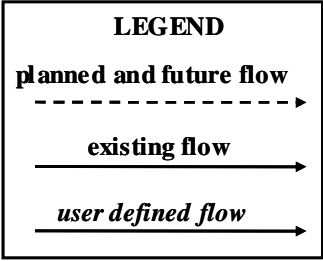
ATIS08 - Dynamic Ridesharing MassDOT



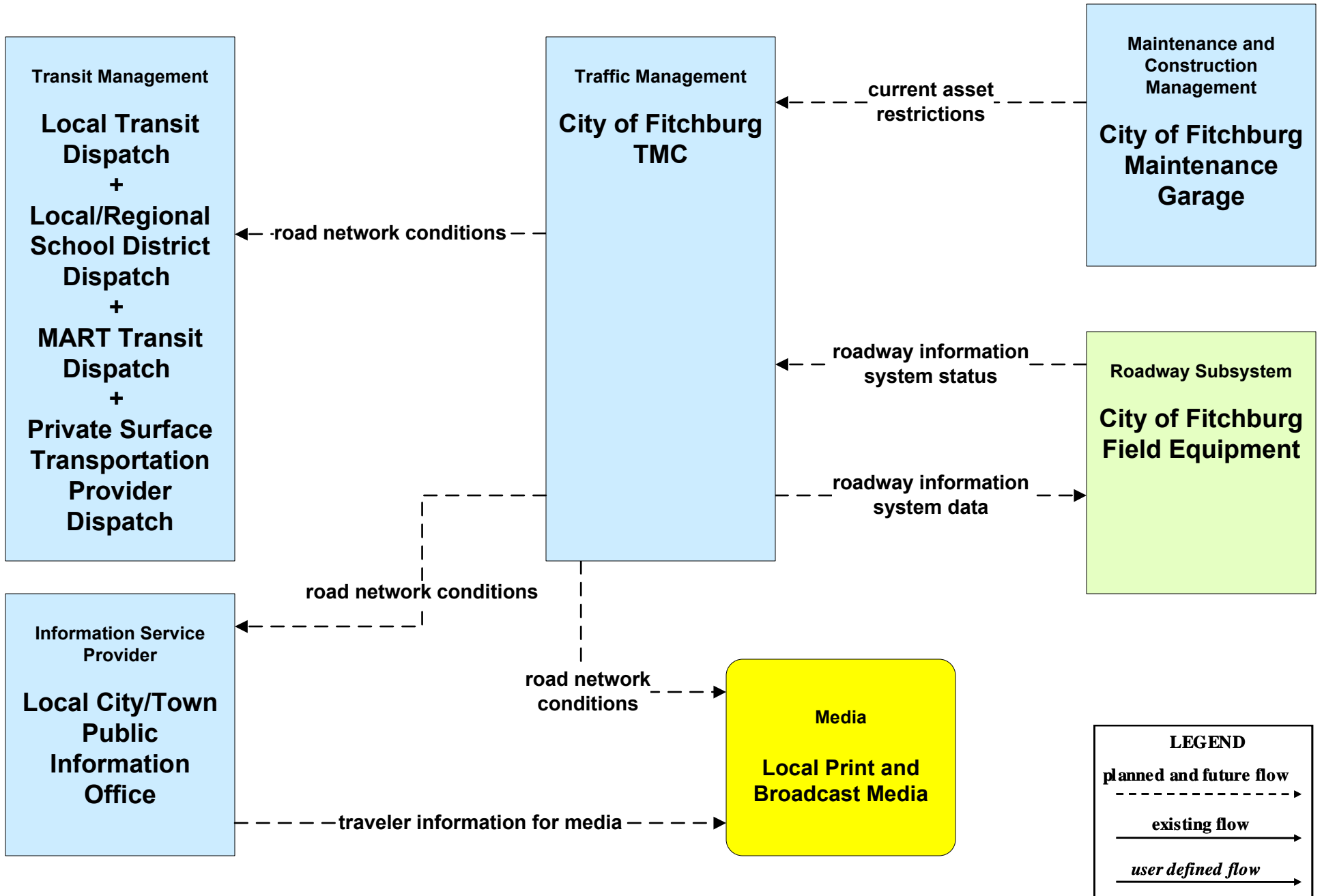
**ATMS06 - Traffic Information Dissemination
MassDOT - Highway Division (2 of 2)**



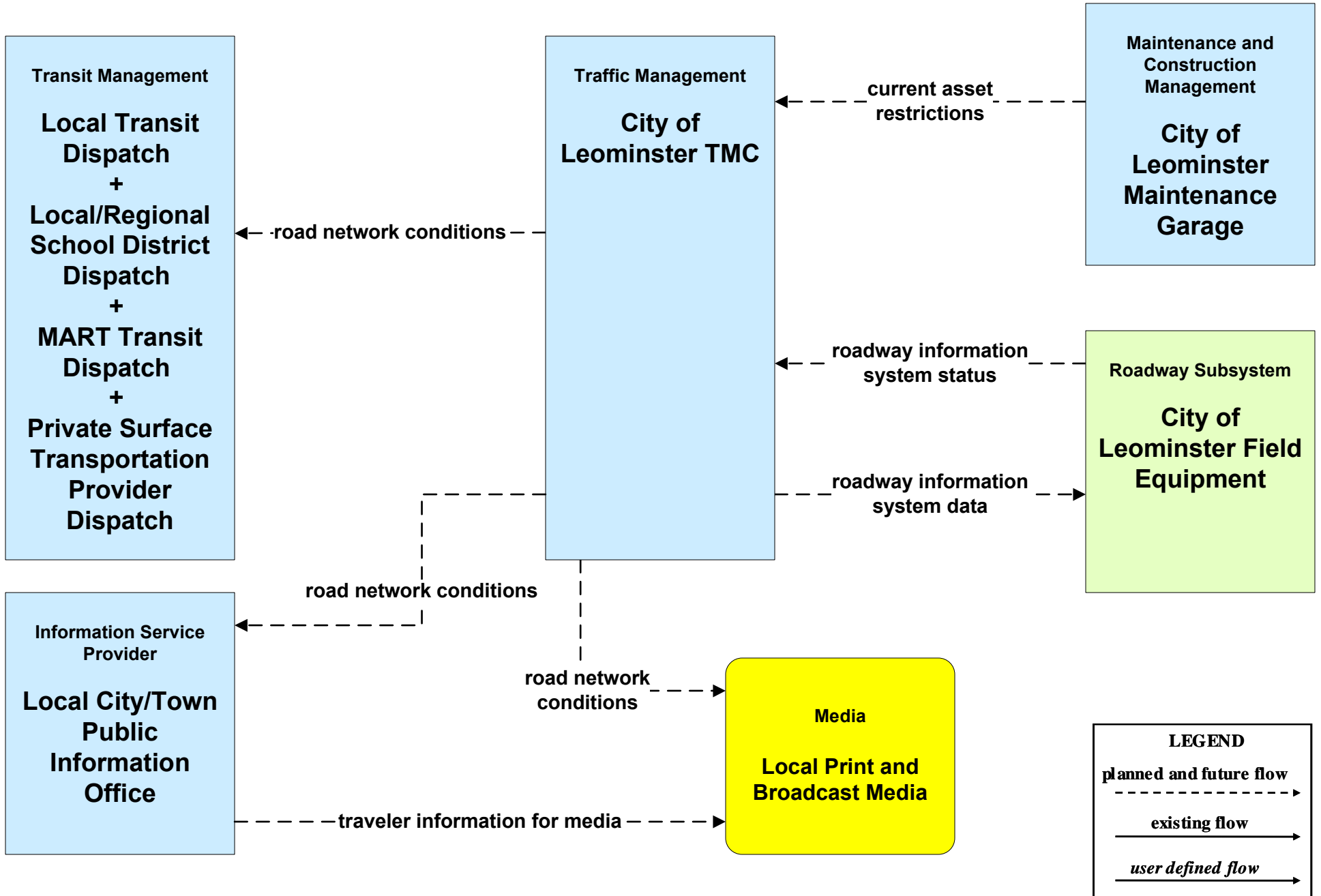
MassDOT Highway Operations Center shall provide information dissemination services in the event the MassDOT - Highway District Offices / DTOC are closed or there is an outstanding emergency where it is deemed necessary to do so.



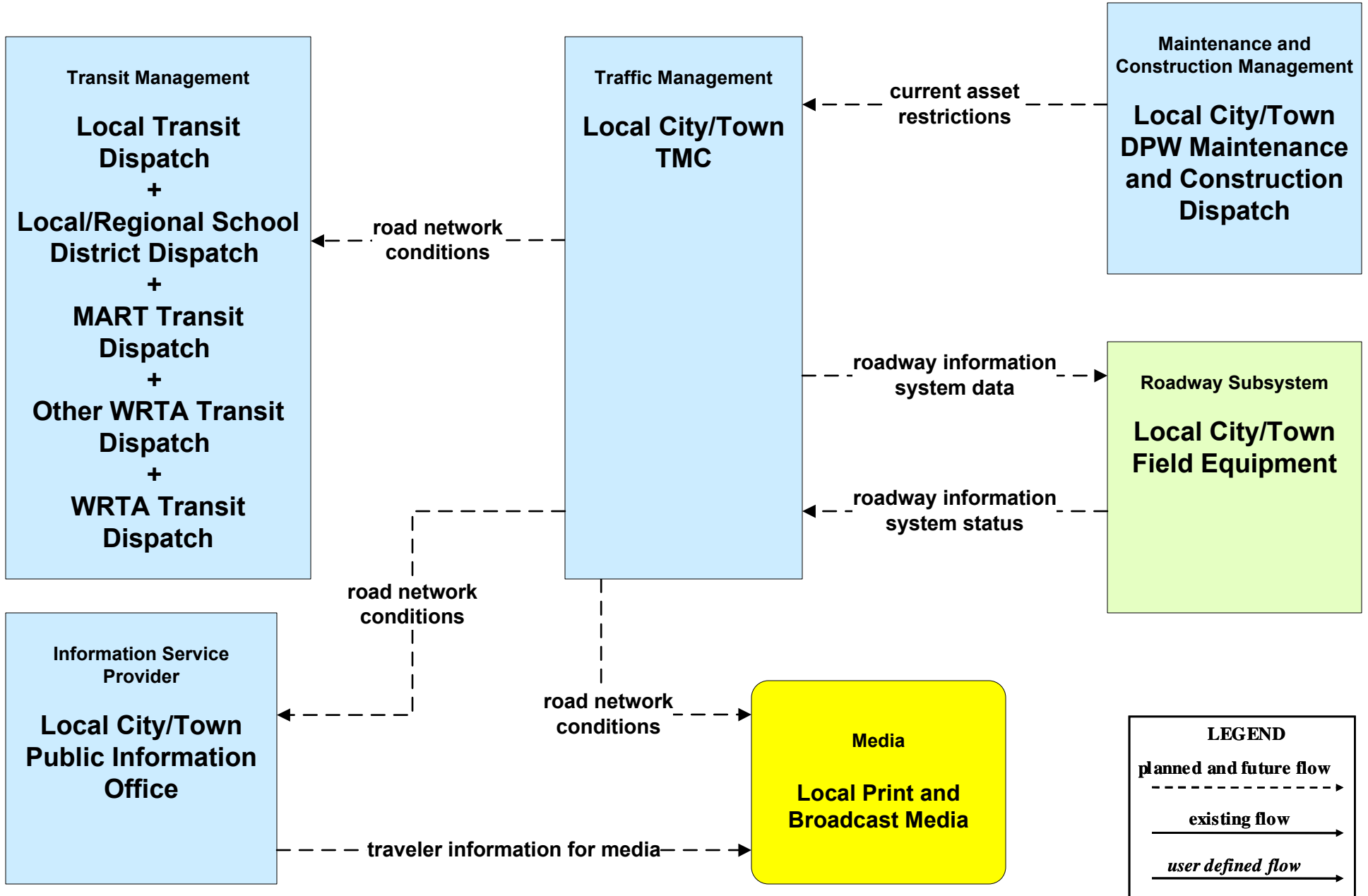
ATMS06 - Traffic Information Dissemination City of Fitchburg



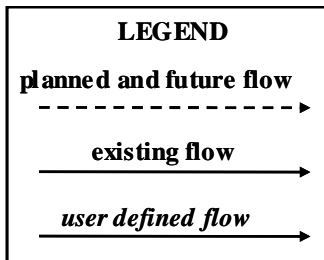
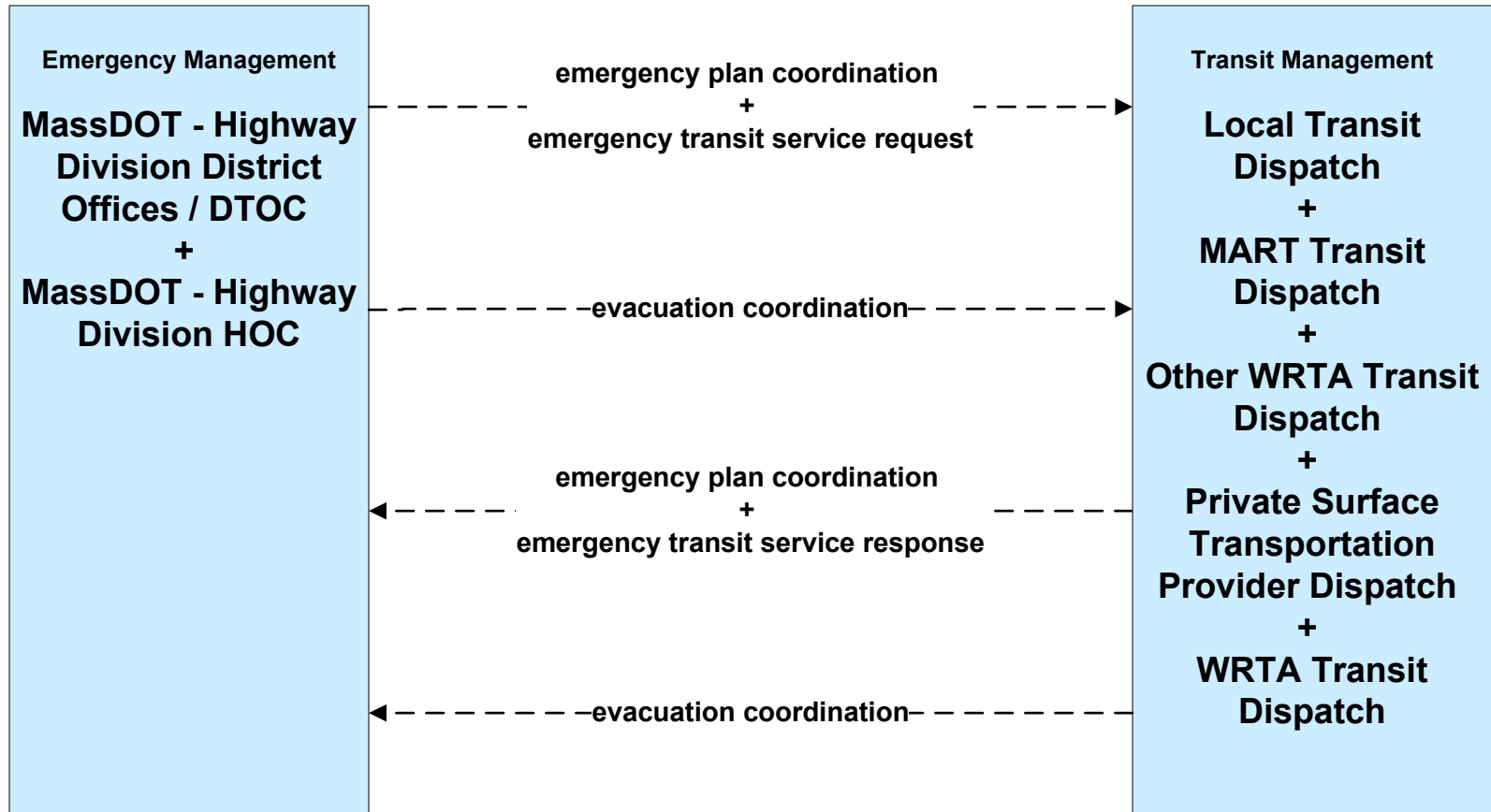
**ATMS06 - Traffic Information Dissemination
City of Leominster**



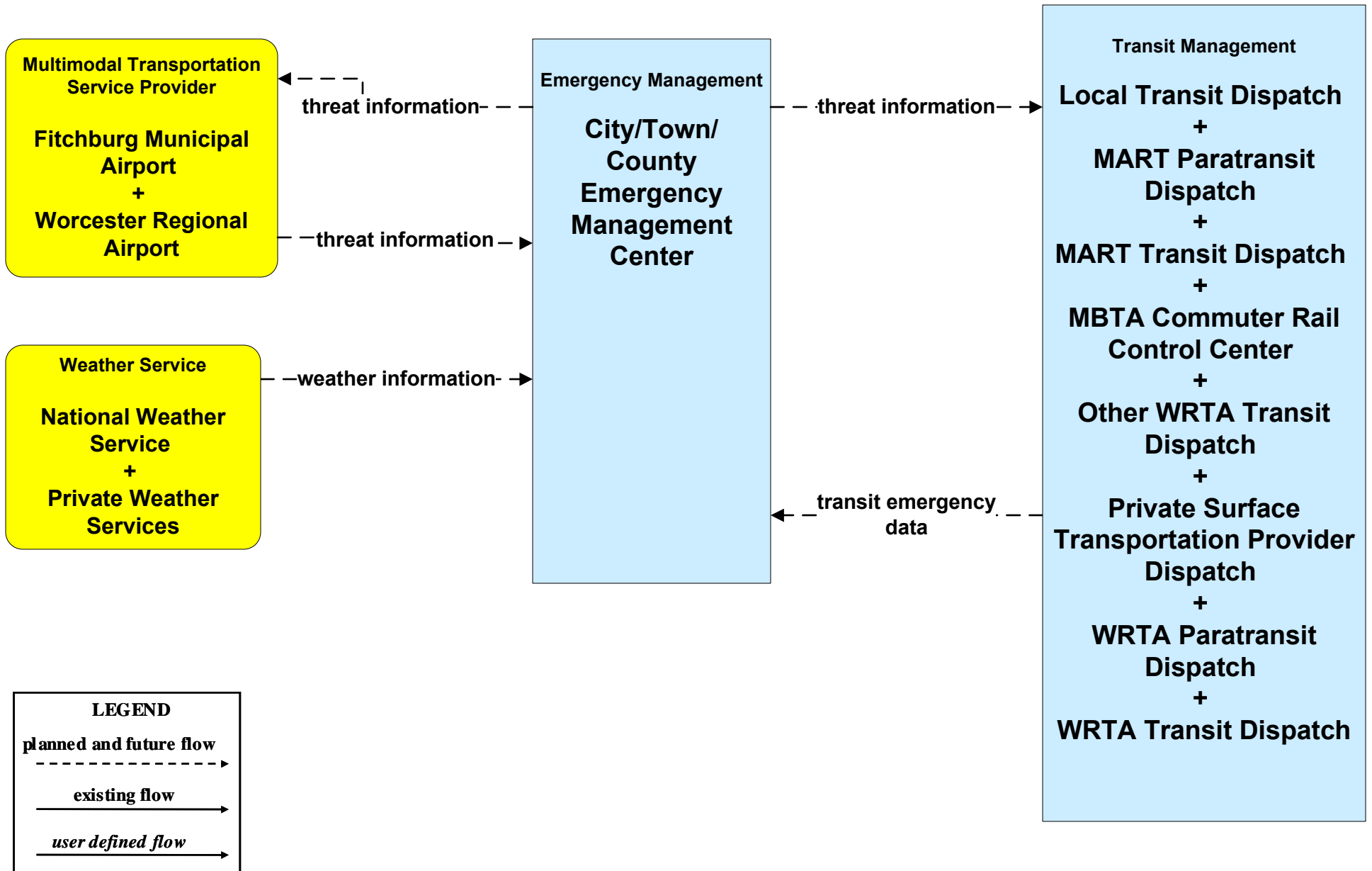
ATMS06 - Traffic Information Dissemination Local City/Town



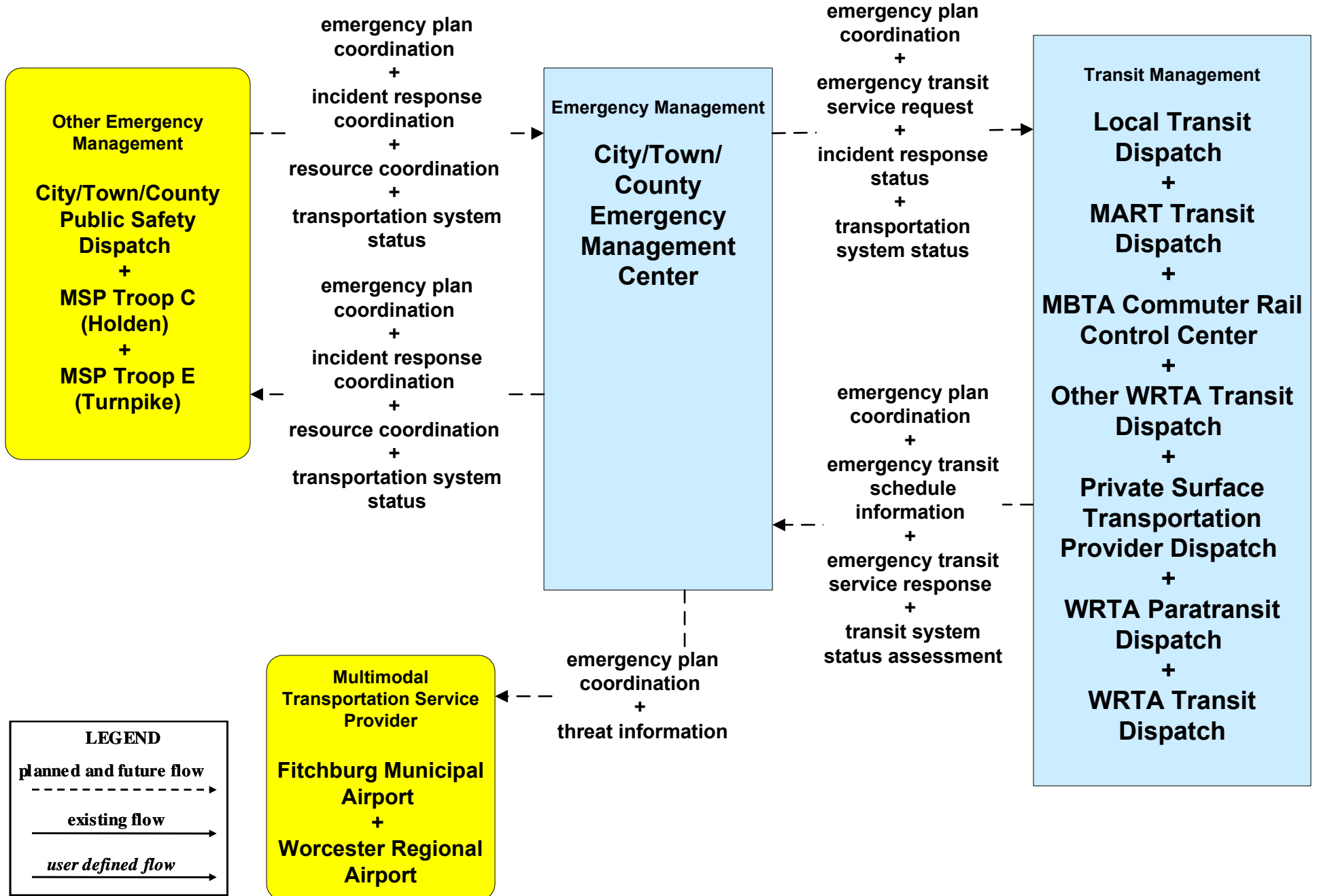
**ATMS08 - Incident Management
MassDOT - Highway Division (EM to Transit)**



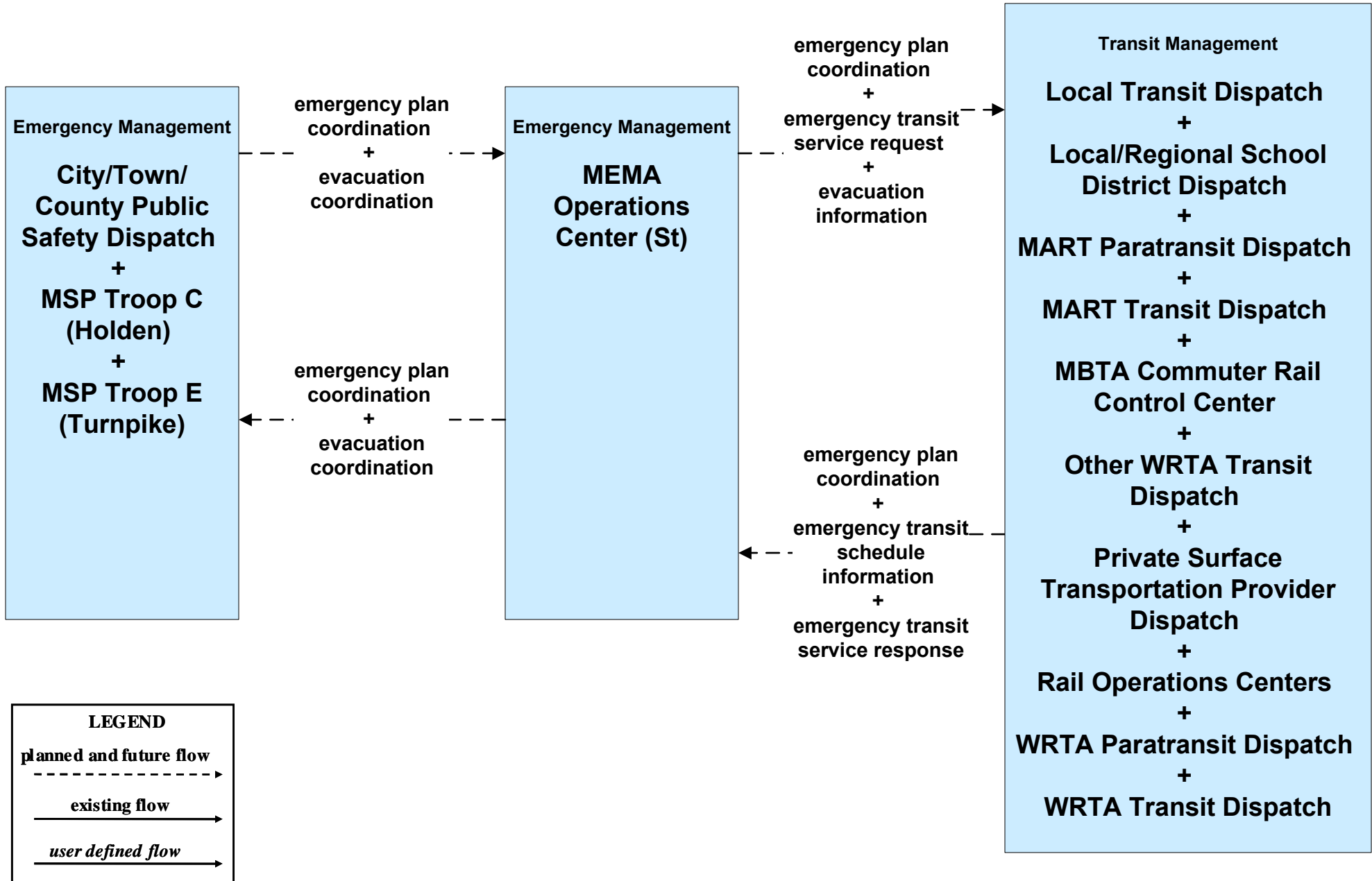
**EM07 - Early Warning System
City/Town/County Emergency Management Center (2 of 2)**



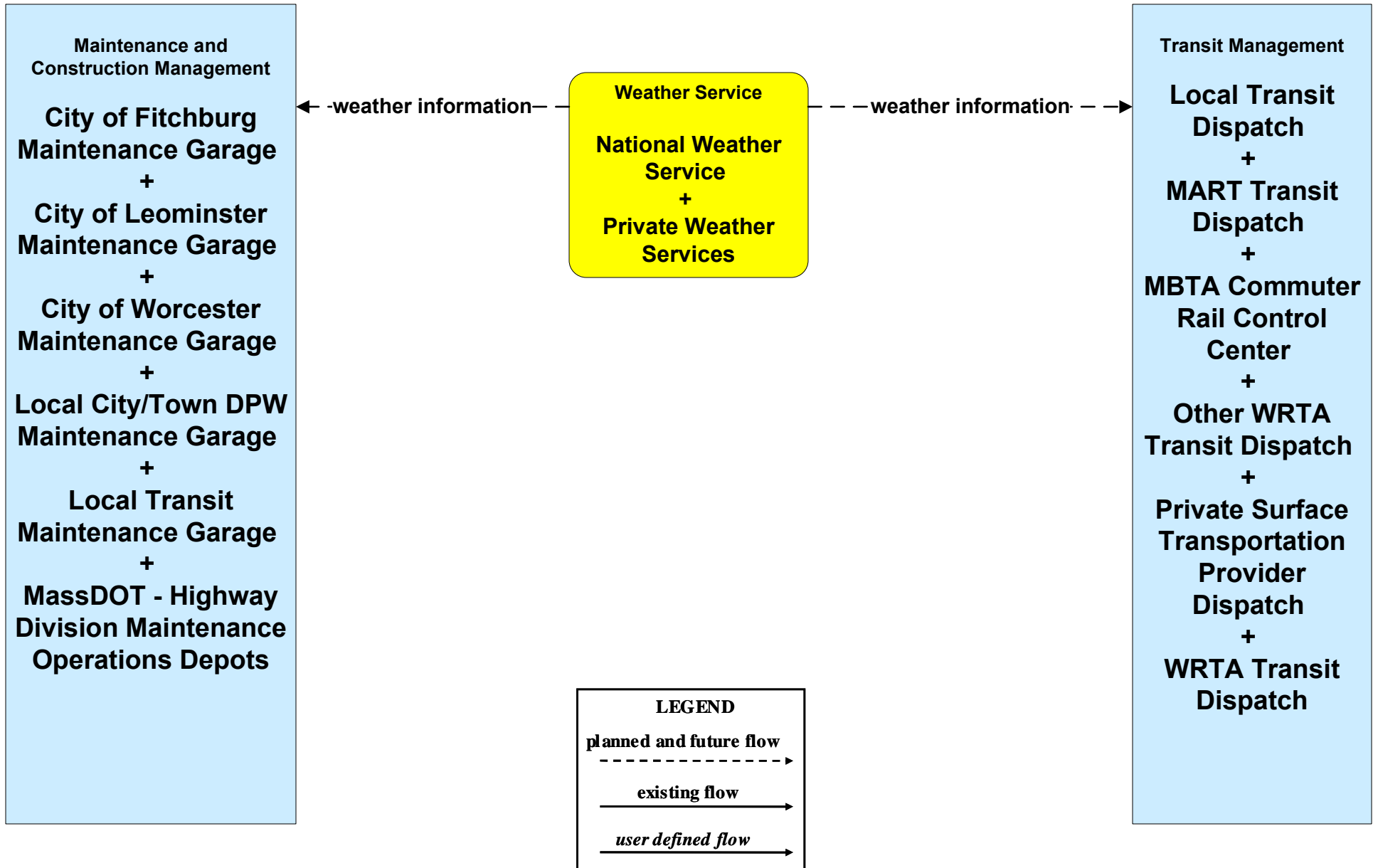
EM08 - Disaster Response
City/Town/County (2 of 2) (EM to Other EM, EM to TRMS)



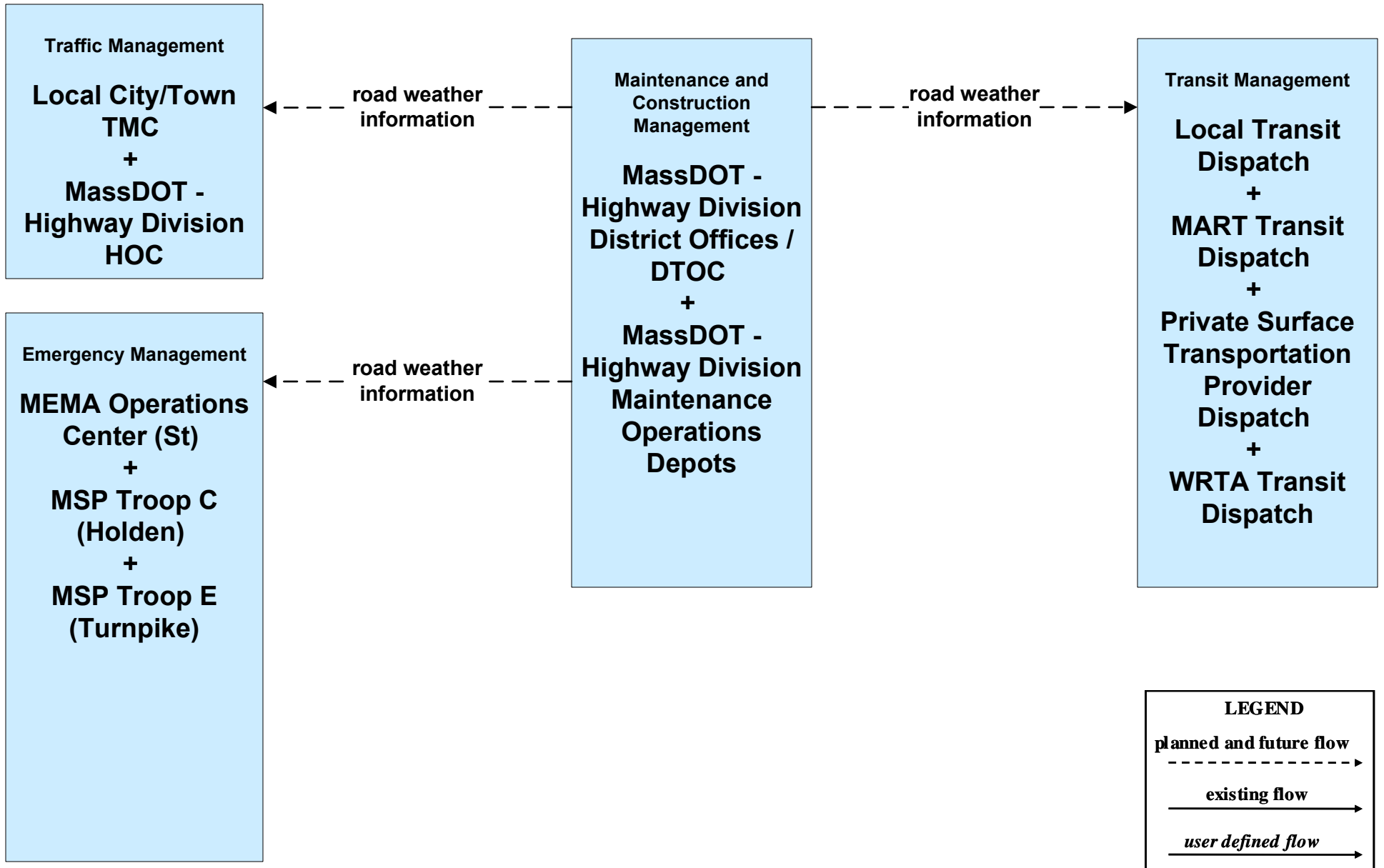
**EM09 - Evacuation and Reentry Management
MEMA (2 of 2) (EM to EM, EM to TRMS)**



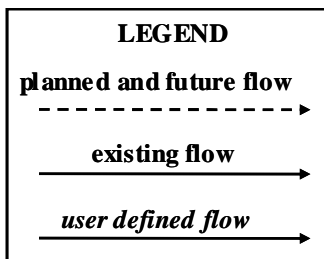
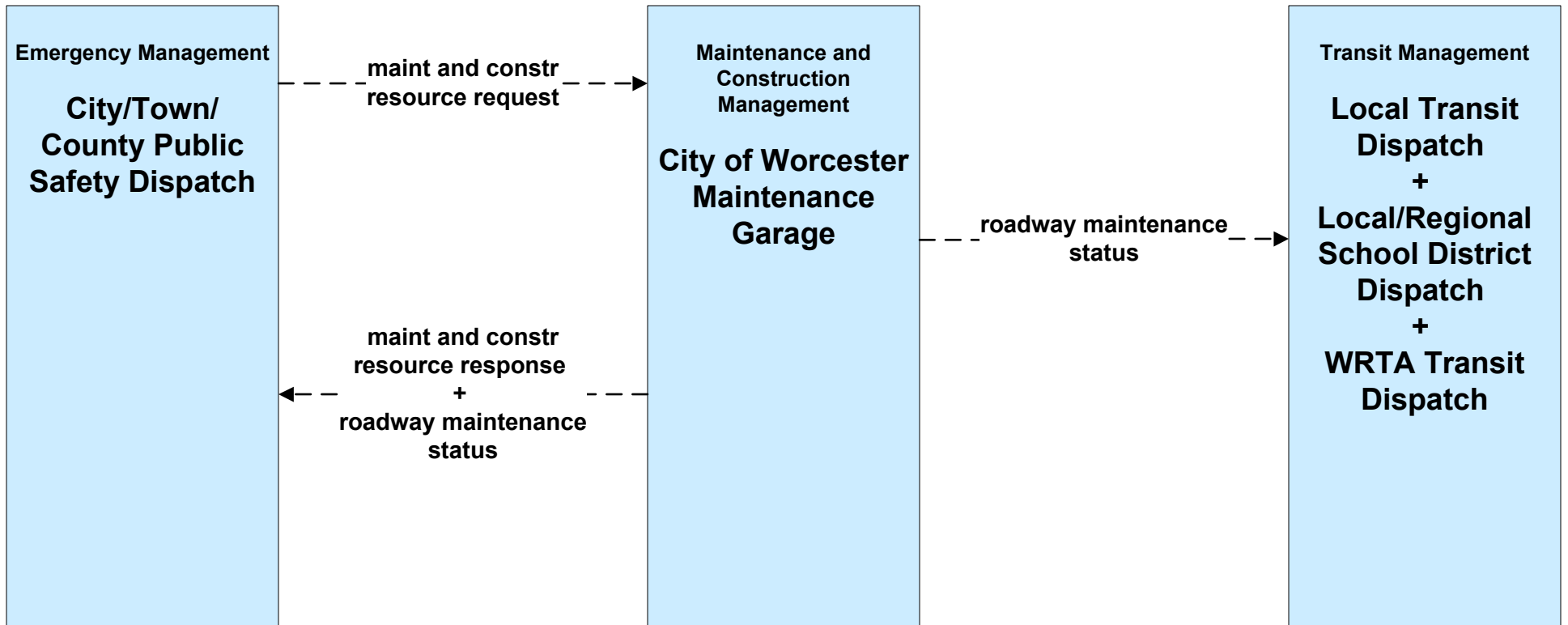
**MC04 - Weather Information Processing and Distribution
National Weather Service (1 of 2)**



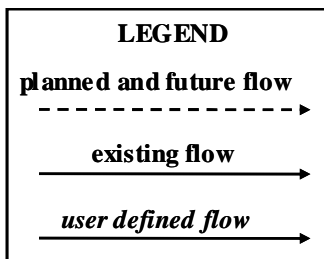
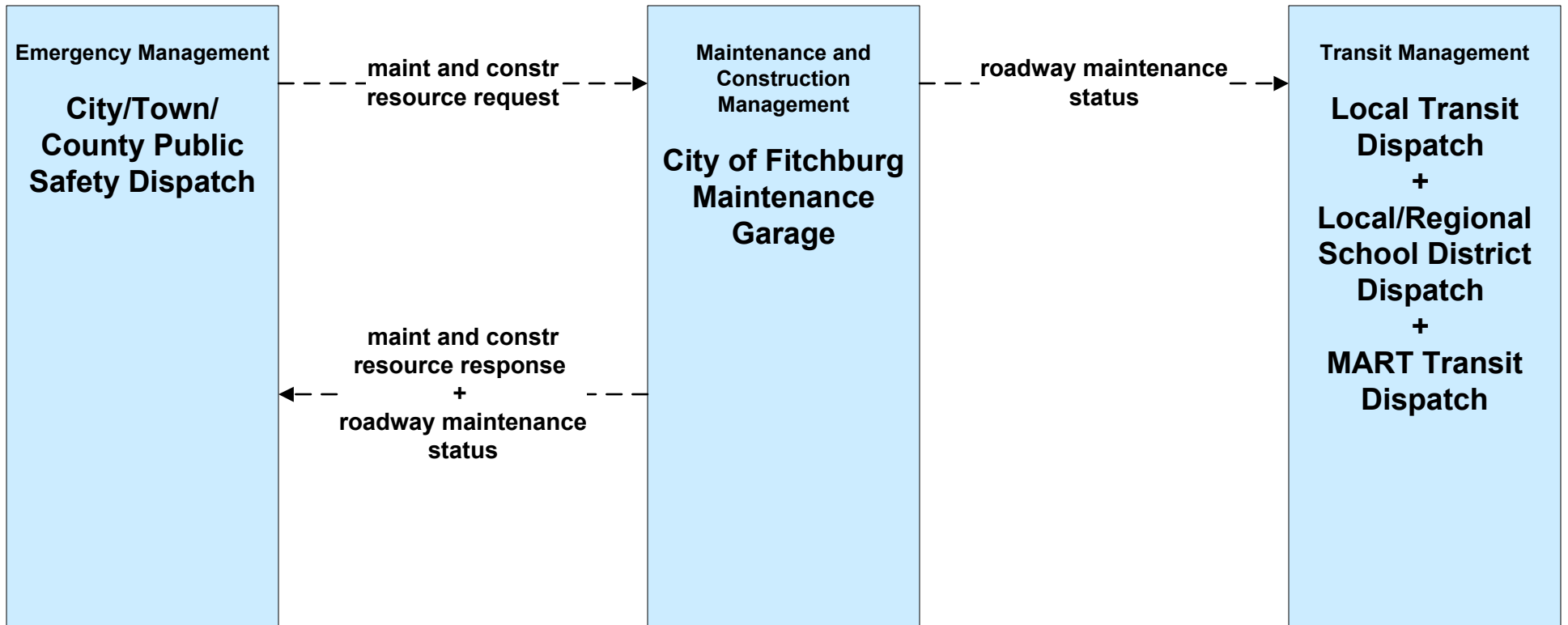
**MC04 - Weather Information Processing and Distribution
MassDOT - Highway Division (1 of 2)**



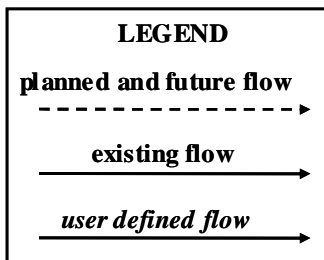
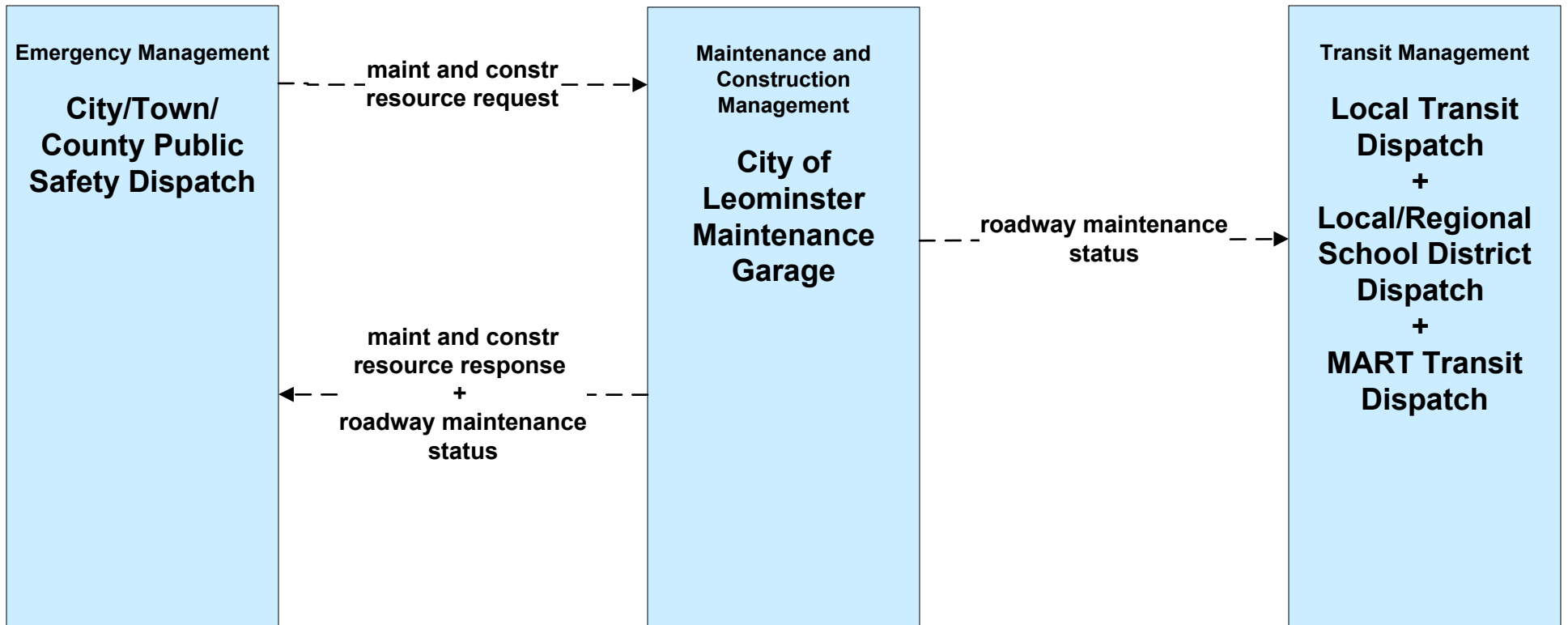
**MC06 - Winter Maintenance
City of Worcester (2 of 2)**



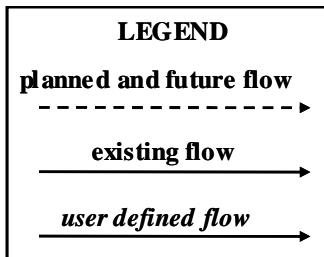
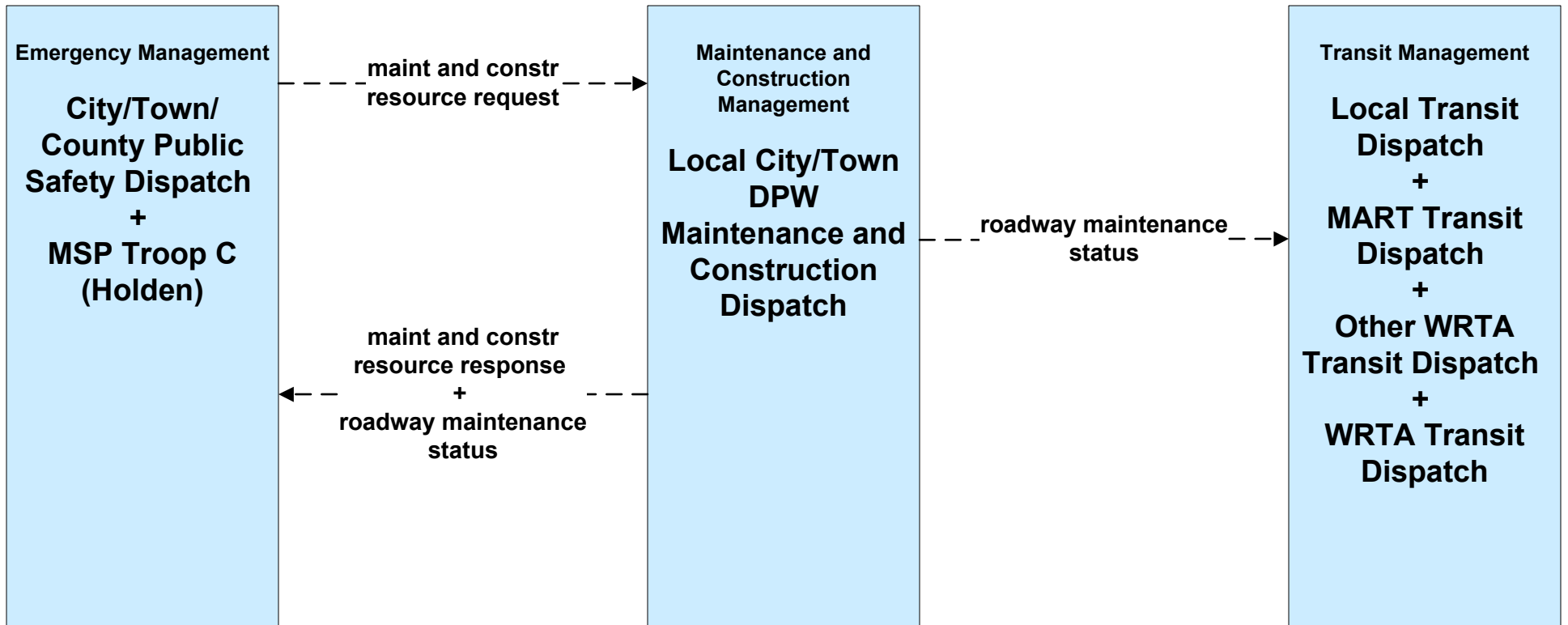
**MC06 - Winter Maintenance
City of Fitchburg (2 of 2)**



**MC06 - Winter Maintenance
City of Leominster (2 of 2)**



**MC06 - Winter Maintenance
Local City/Town (2 of 2)**



**MC10 - Maintenance and Construction Activity Coordination
MassDOT - Highway Division (2 of 2)**

