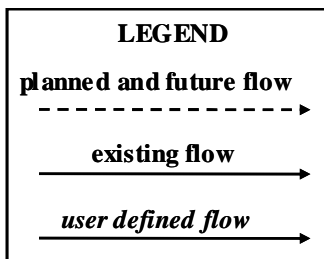
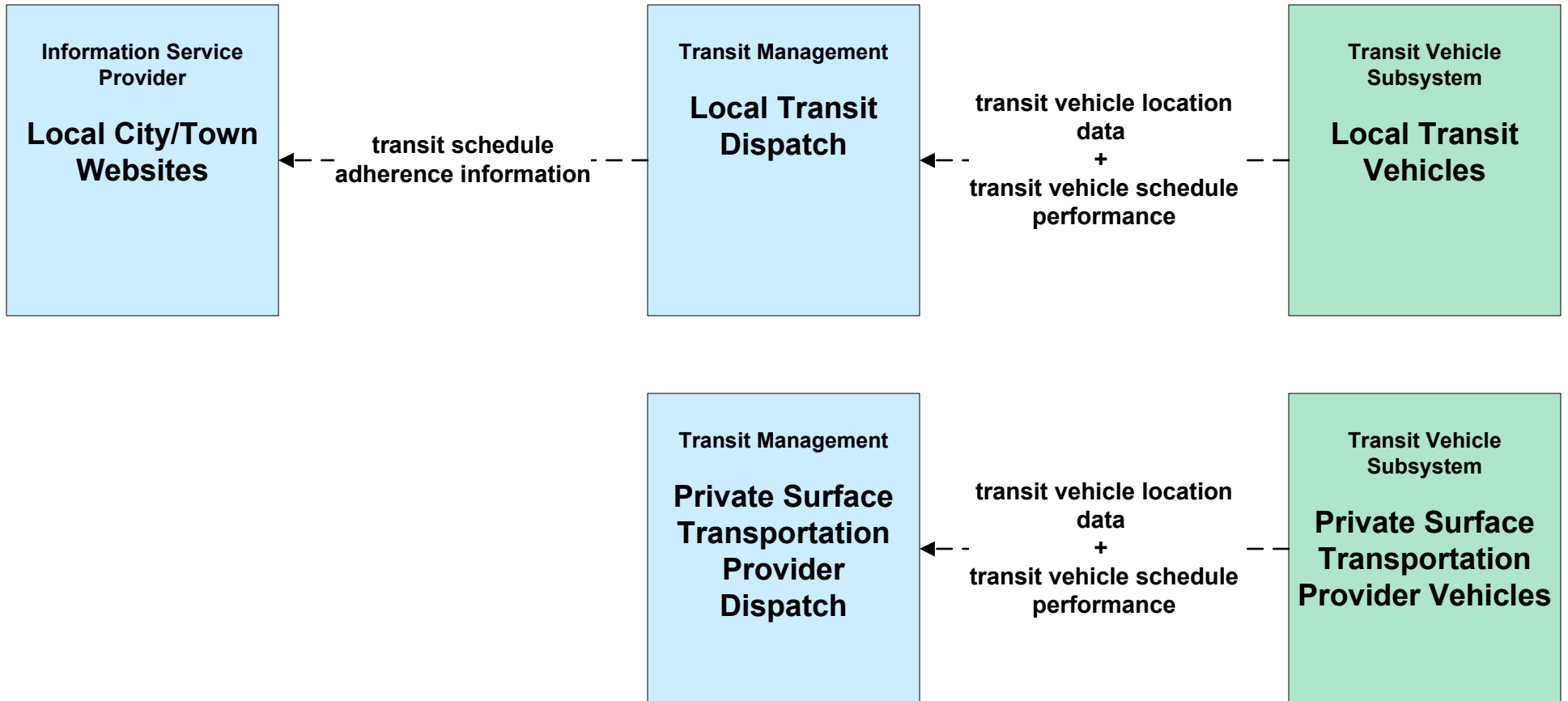
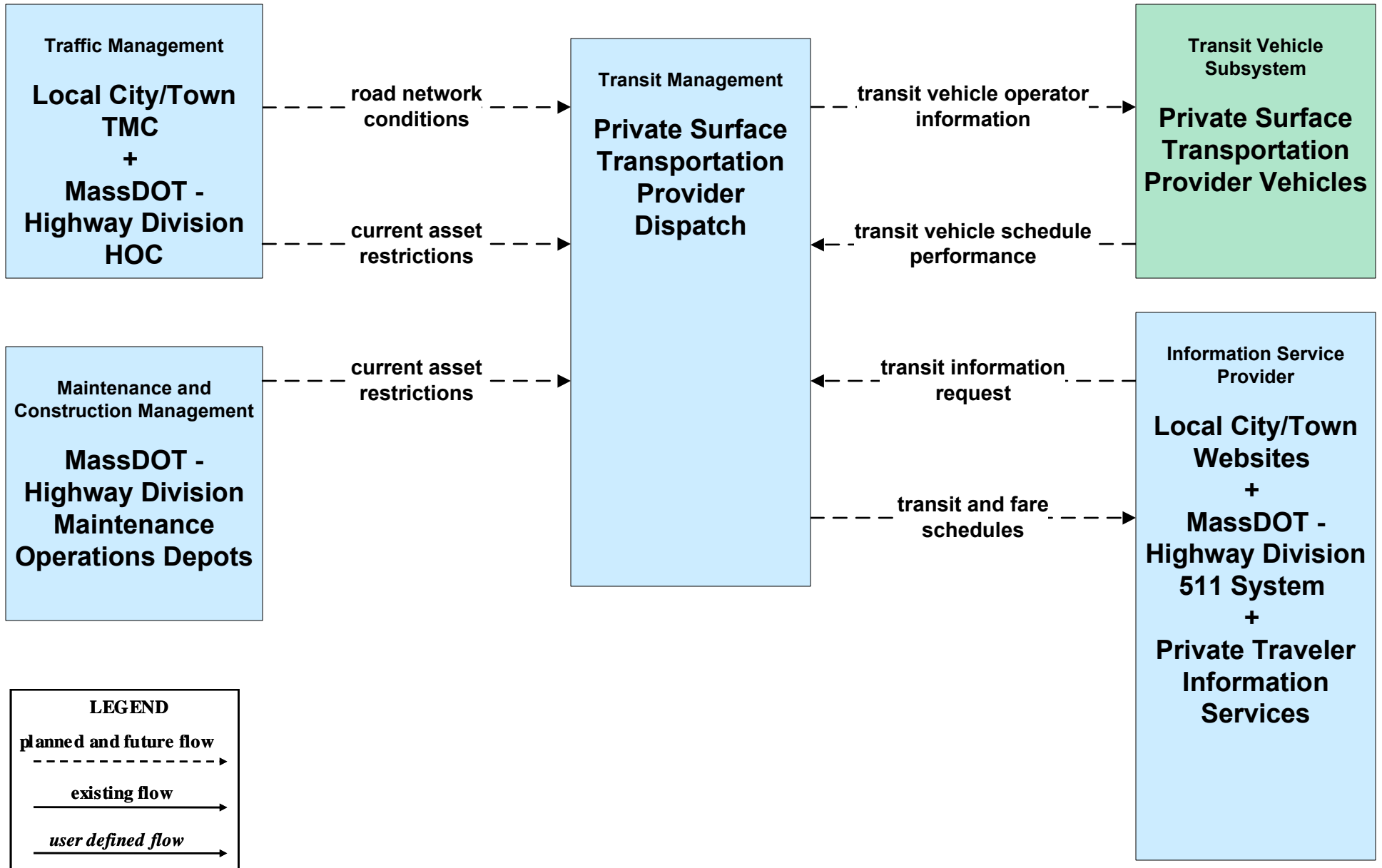


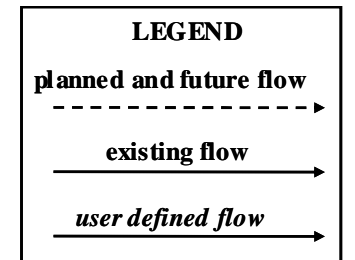
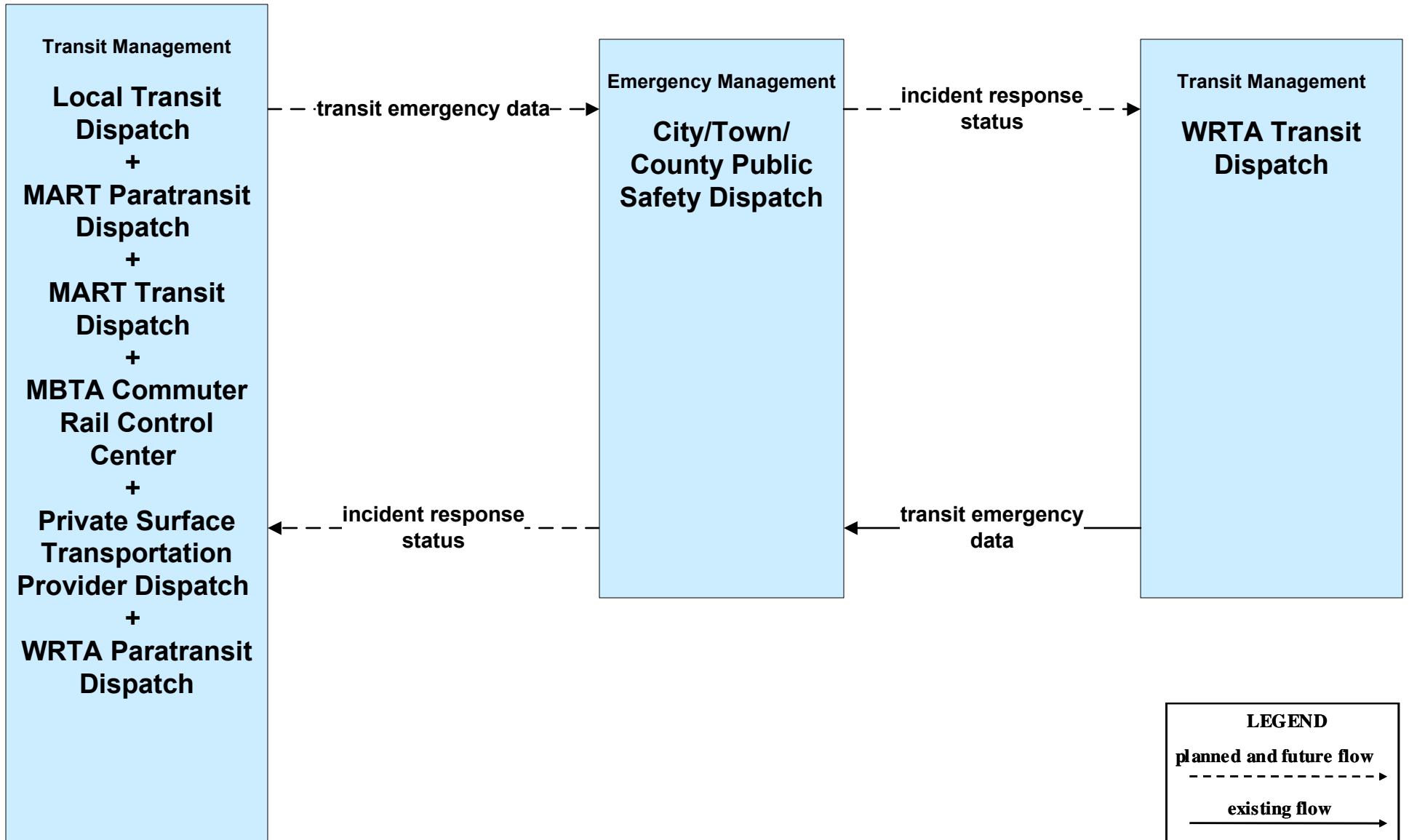
APTS01 - Transit Vehicle Tracking Regional Transit Authorities



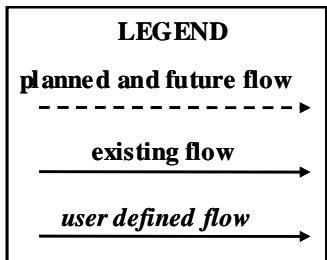
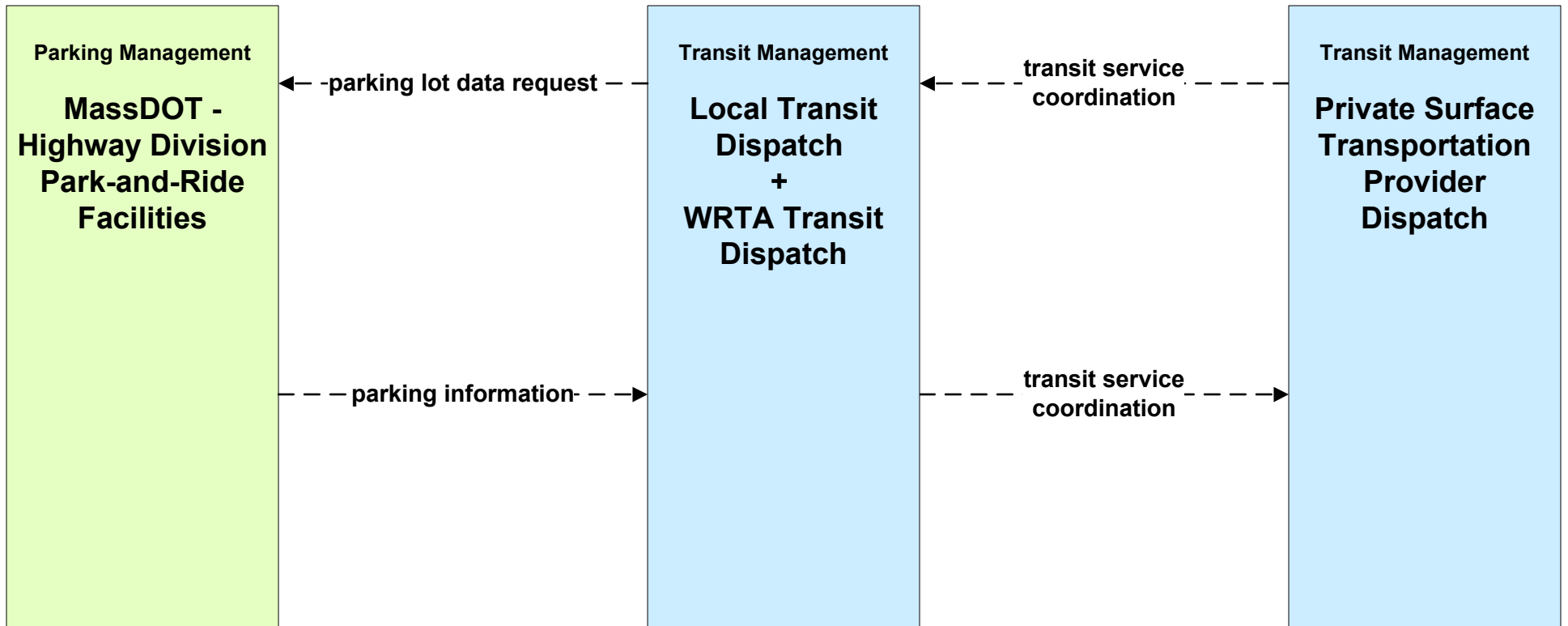
**APTS02 - Transit Fixed-Route Operations
Private Ground Transportation Providers**



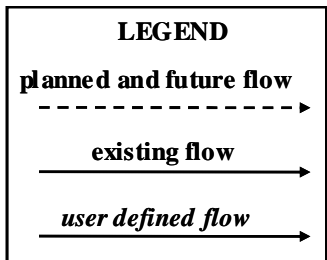
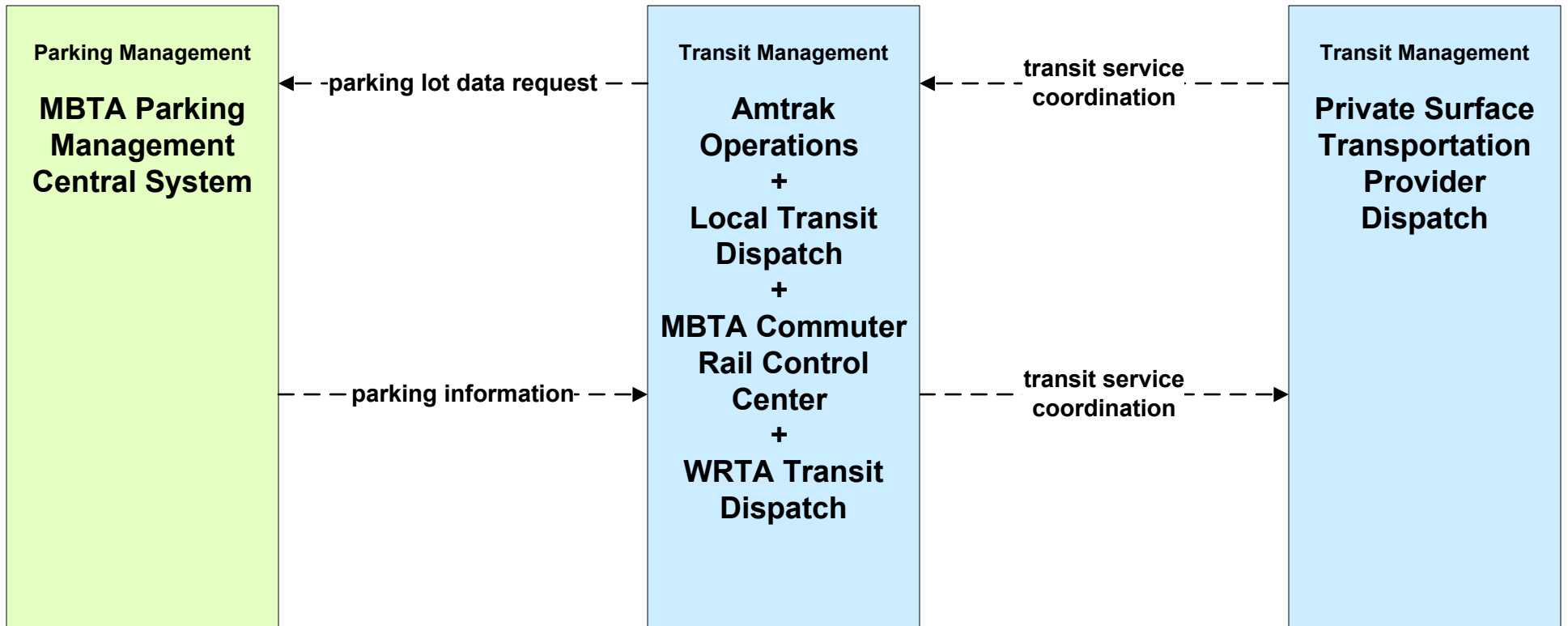
**APTS05 - Transit Security
City/Town/County**



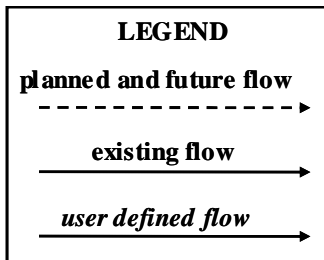
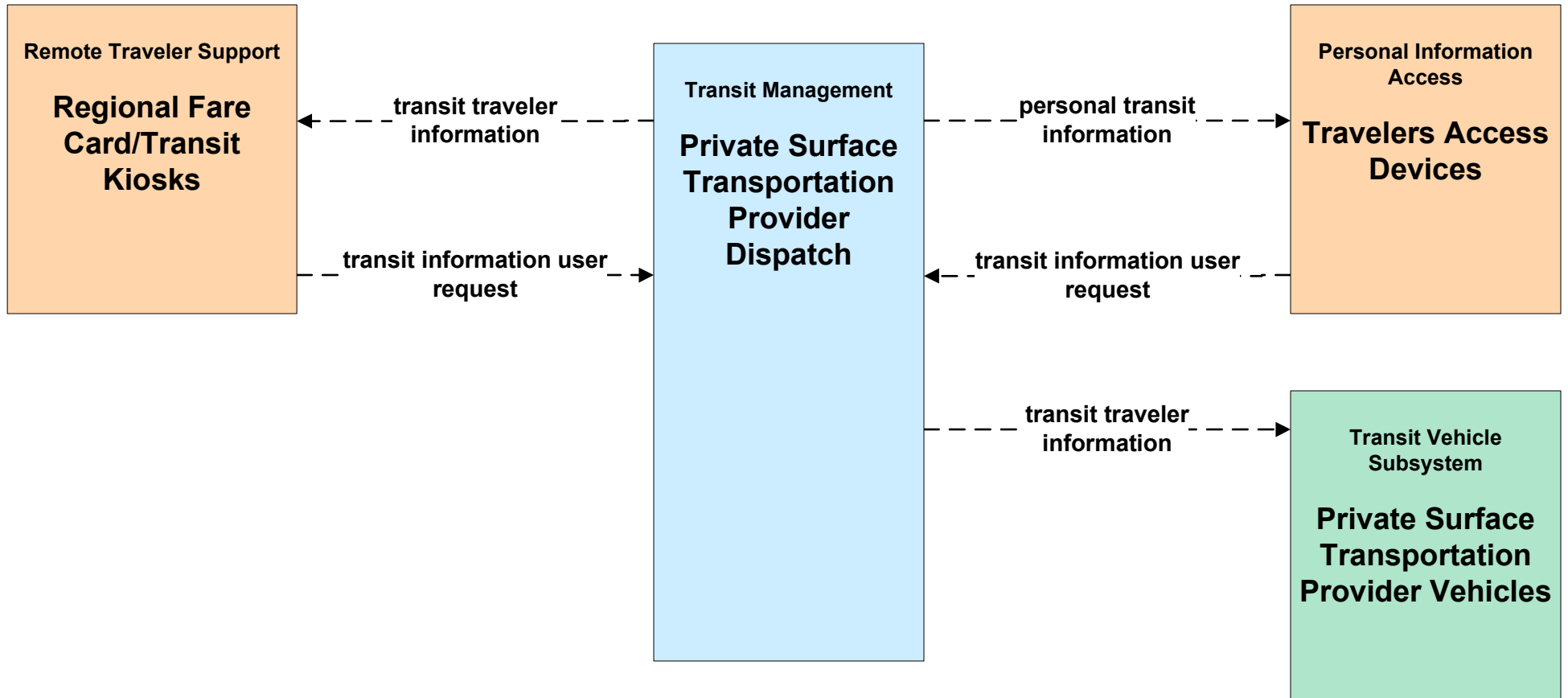
**APTS07 - Multimodal Coordination
MassDOT - Highway Division**



**APTS07 - Multimodal Coordination
MBTA**

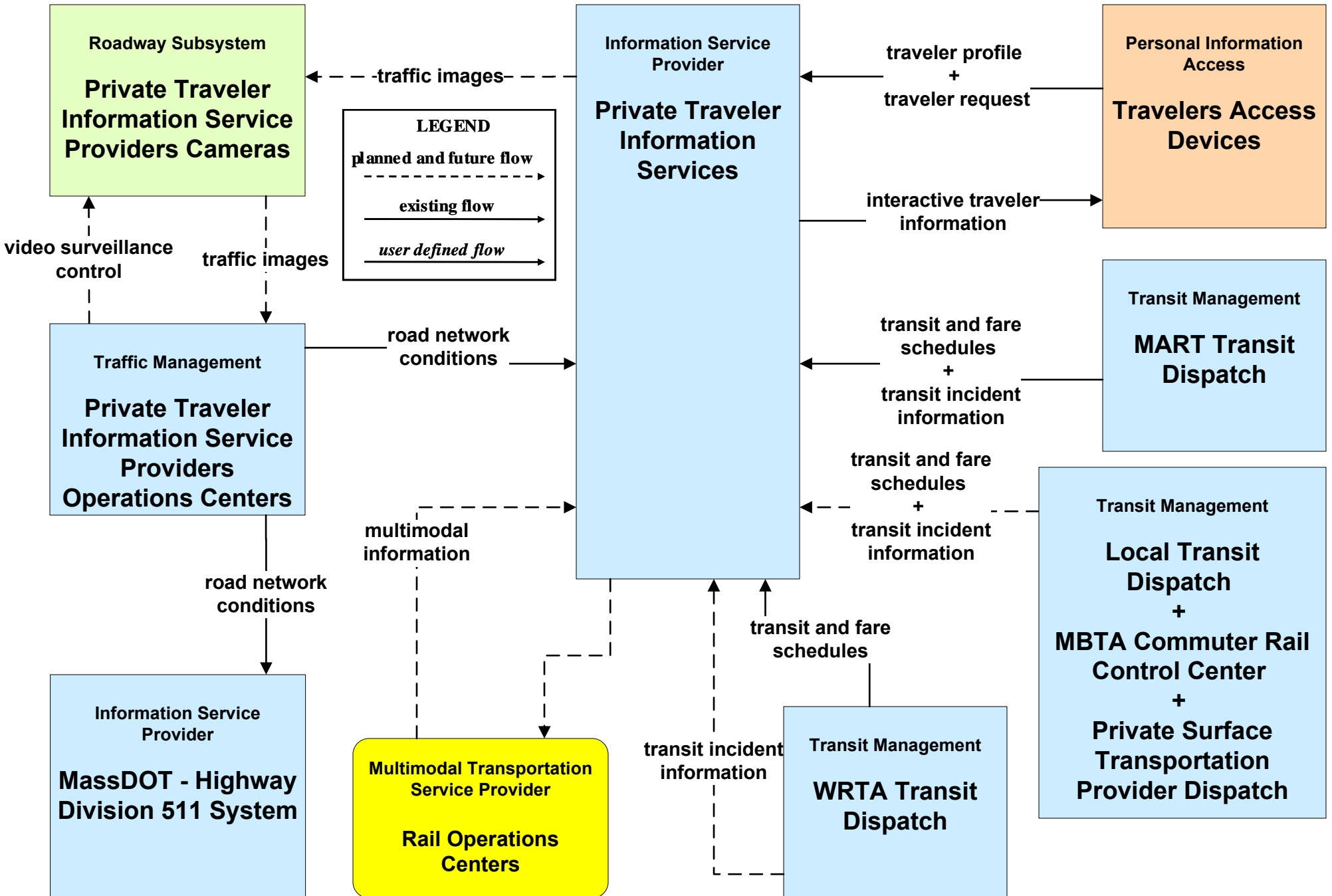


**APTS08 - Transit Traveler Information
Private Ground Transportation Providers**

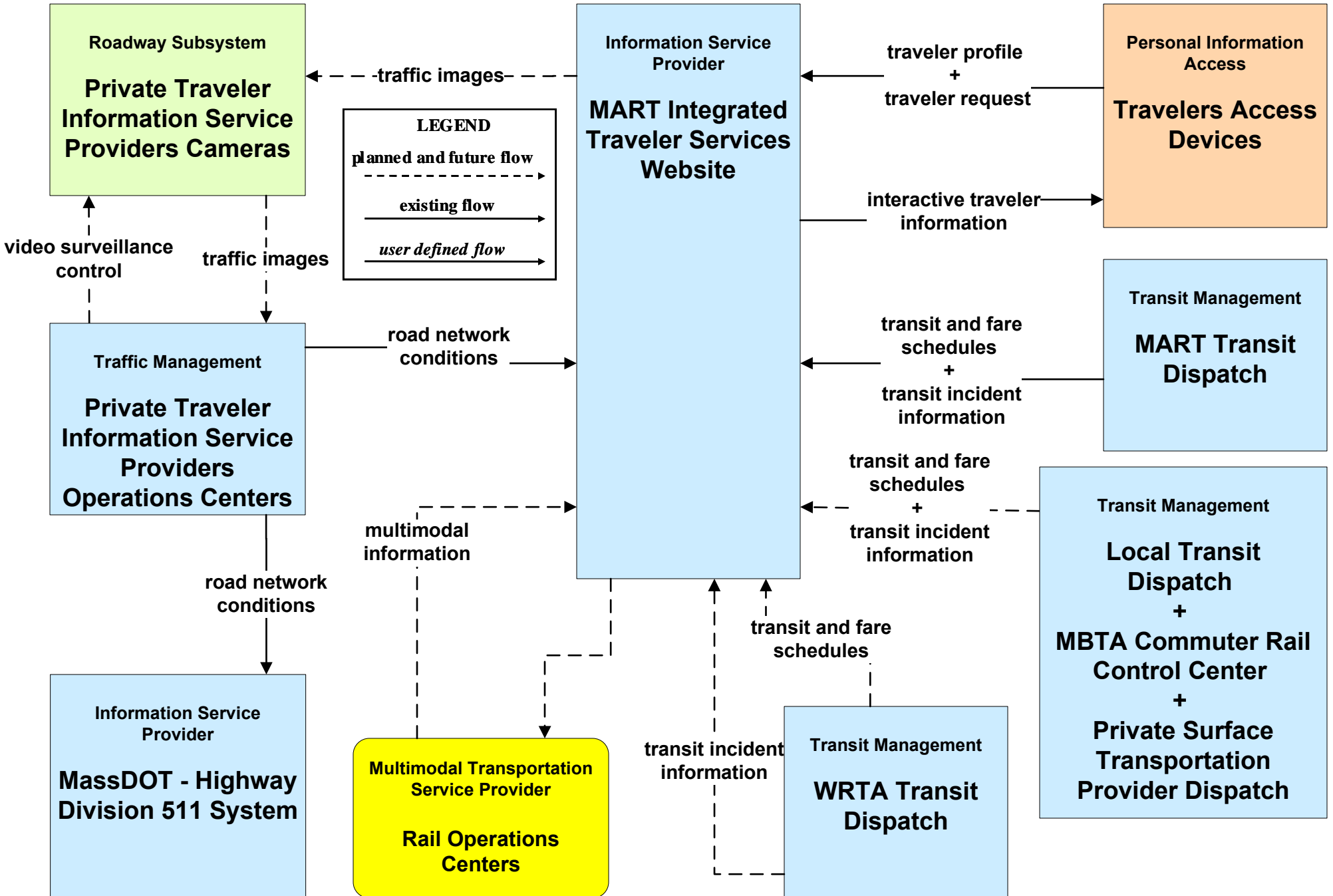


ATIS02 - Interactive Traveler Information

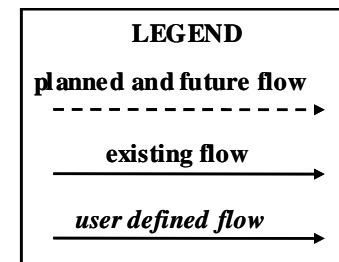
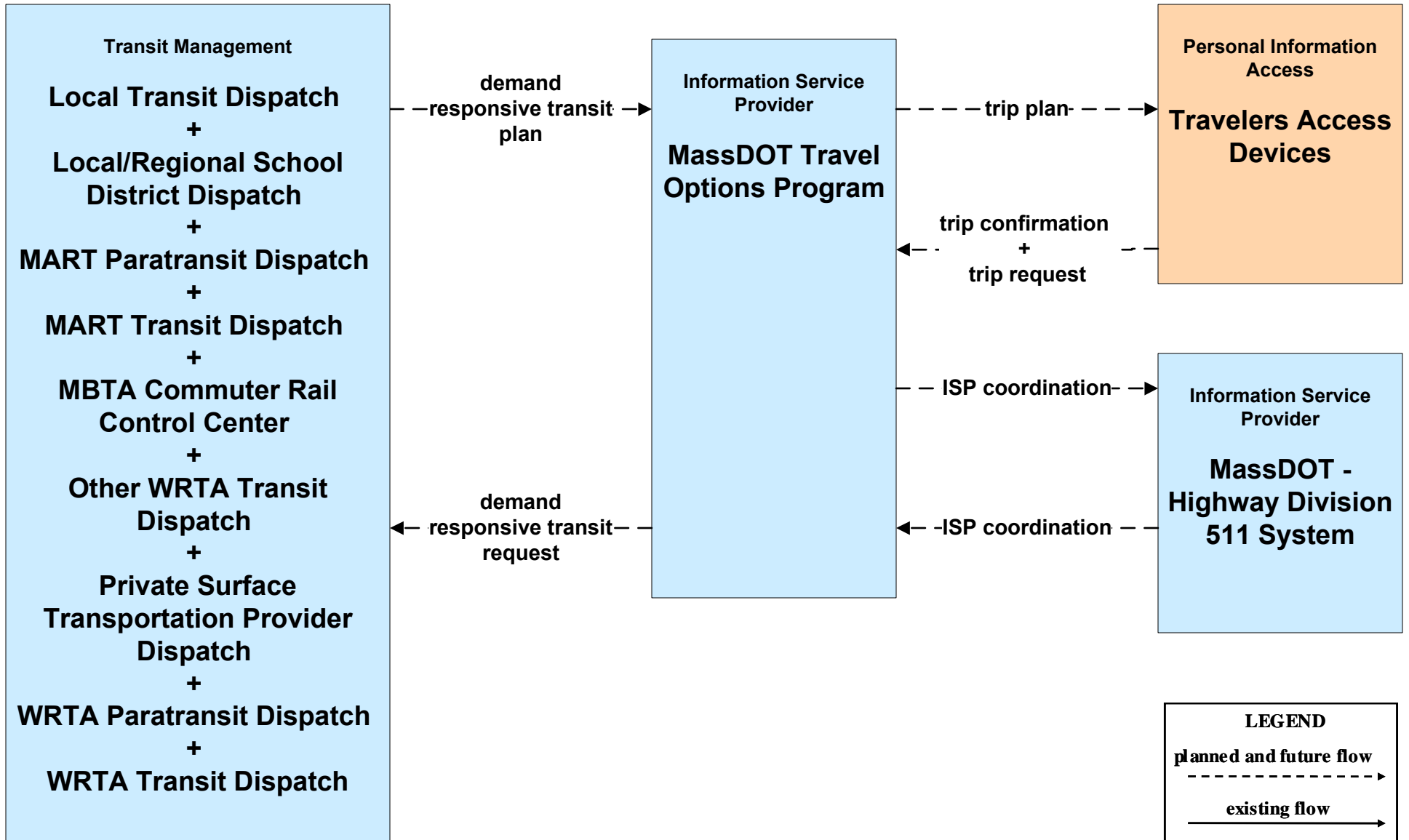
MART / Private Traveler Information Service Providers (Part 1 of 2)



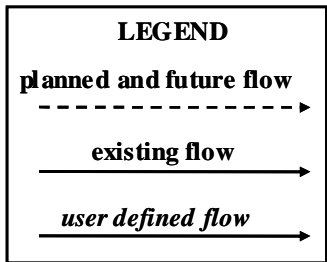
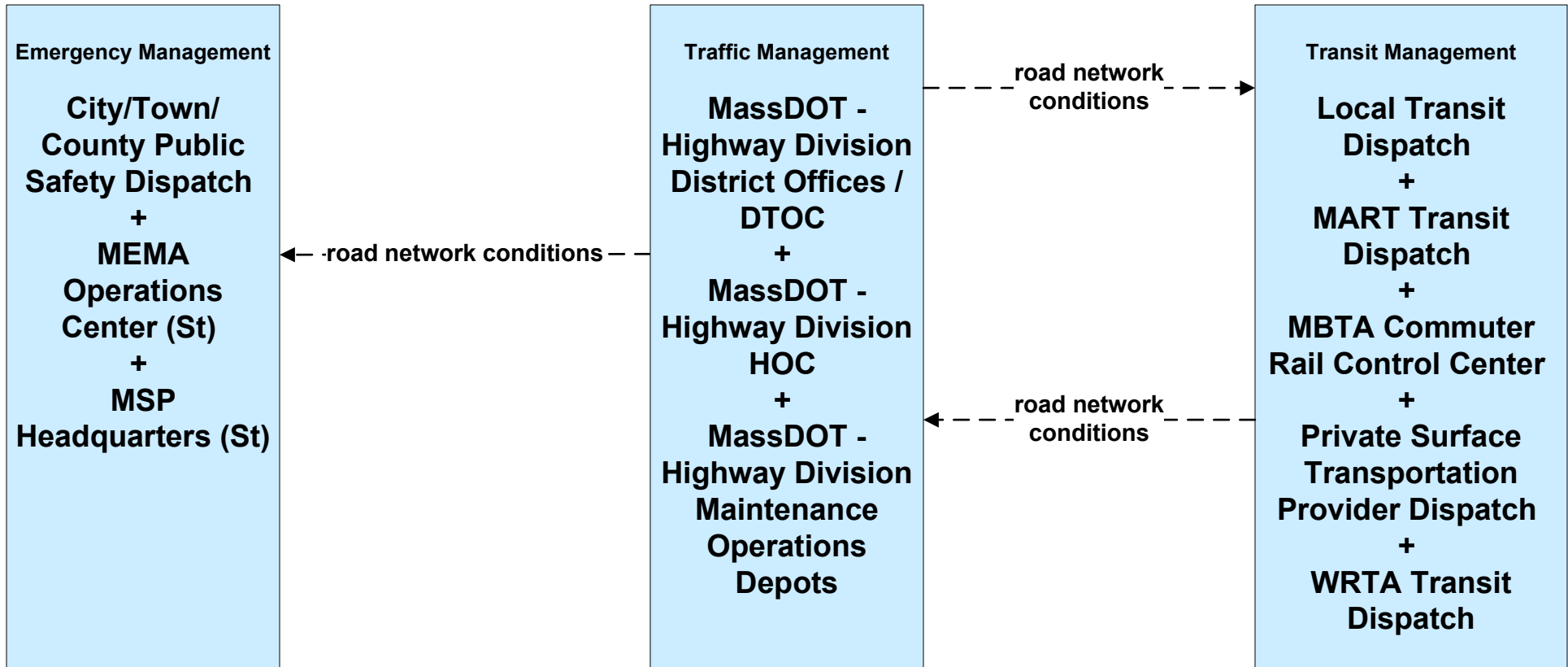
ATIS02 - Interactive Traveler Information
MART / Private Traveler Information Service Providers (Part 2 of 2)



ATIS08 - Dynamic Ridesharing MassDOT

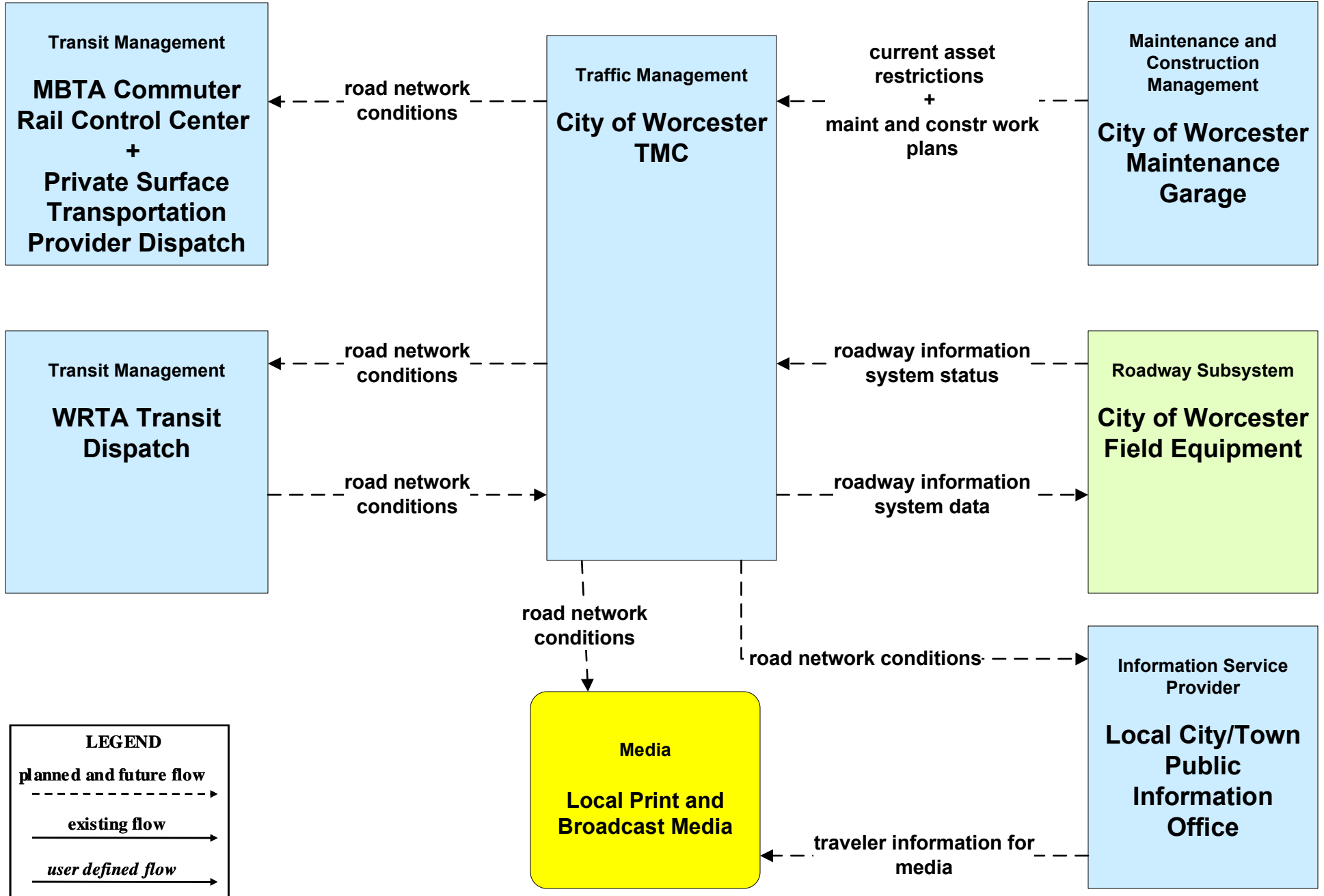


**ATMS06 - Traffic Information Dissemination
MassDOT - Highway Division (2 of 2)**

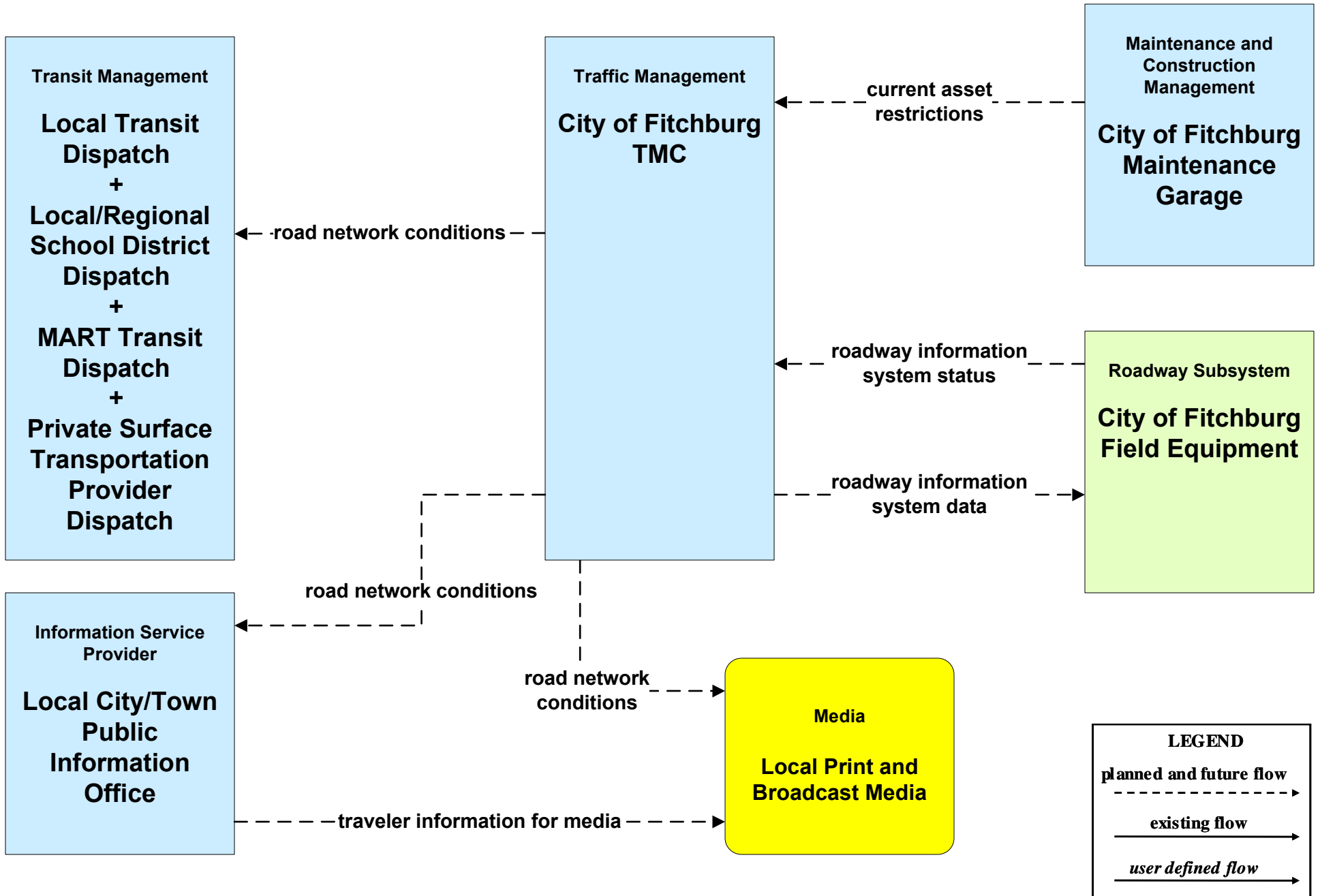


MassDOT Highway Operations Center shall provide information dissemination services in the event the MassDOT - Highway District Offices / DTOC are closed or there is an outstanding emergency where it is deemed necessary to do so.

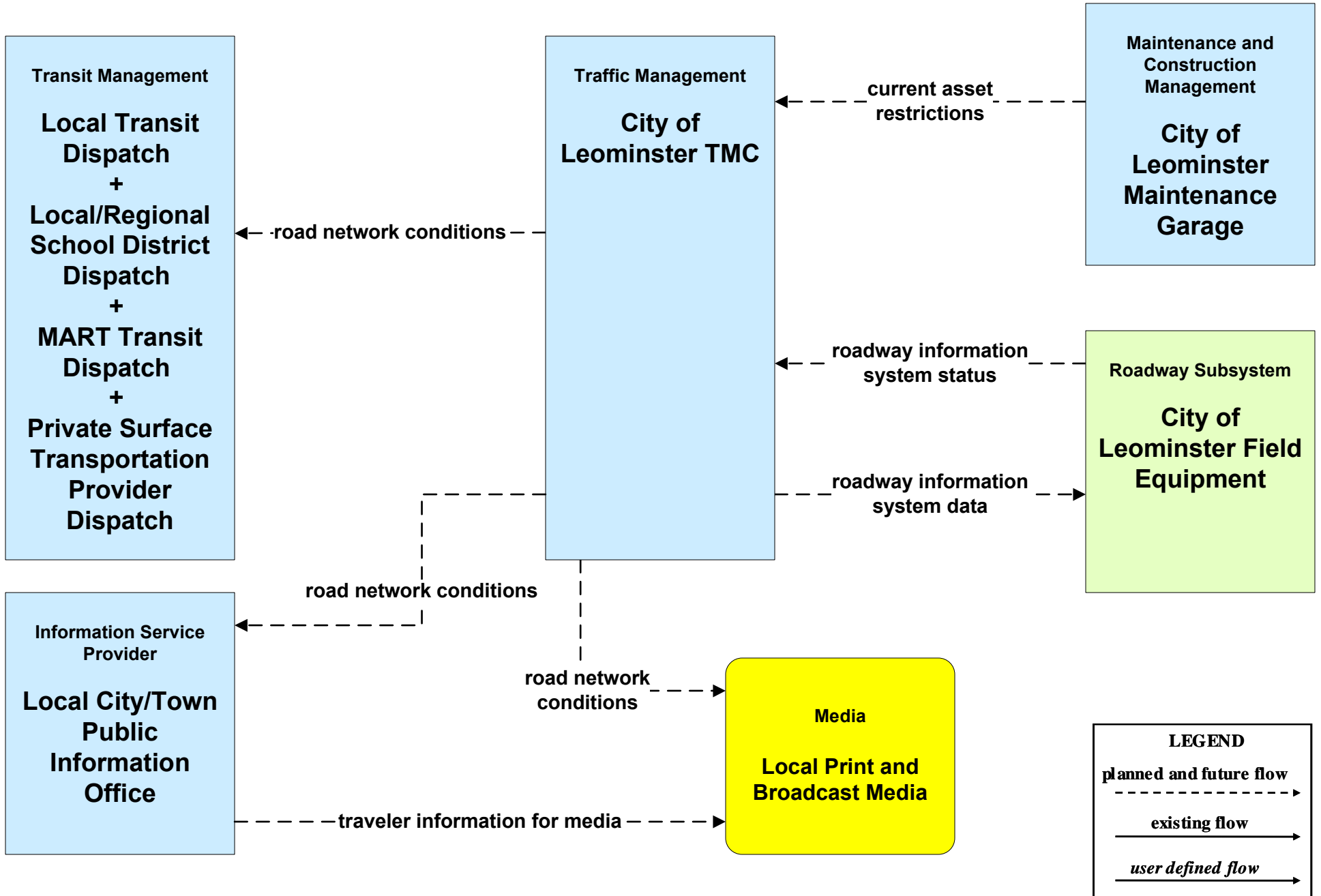
ATMS06 - Traffic Information Dissemination City of Worcester



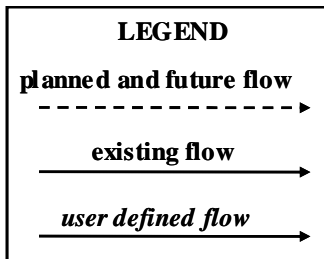
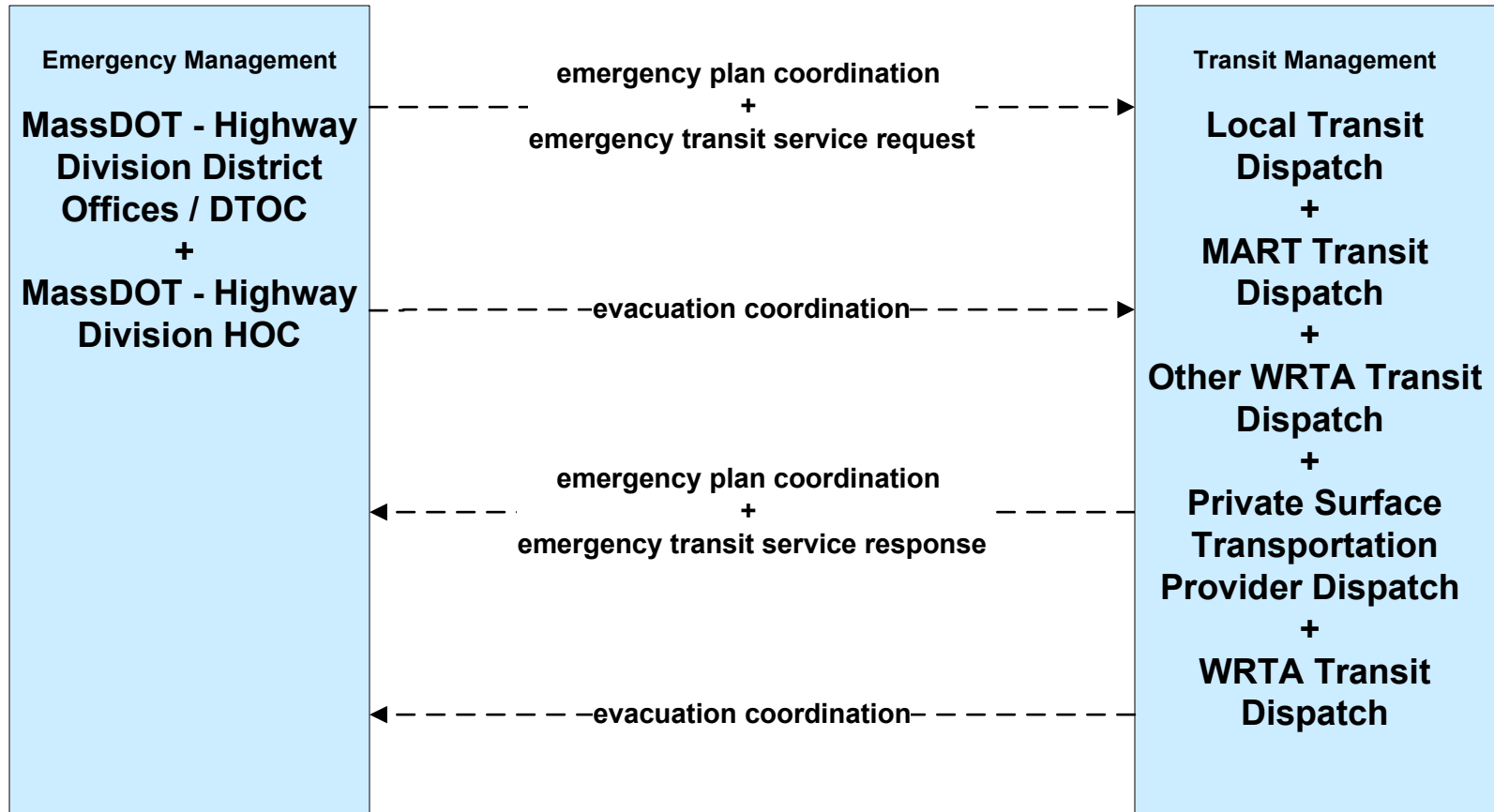
ATMS06 - Traffic Information Dissemination City of Fitchburg



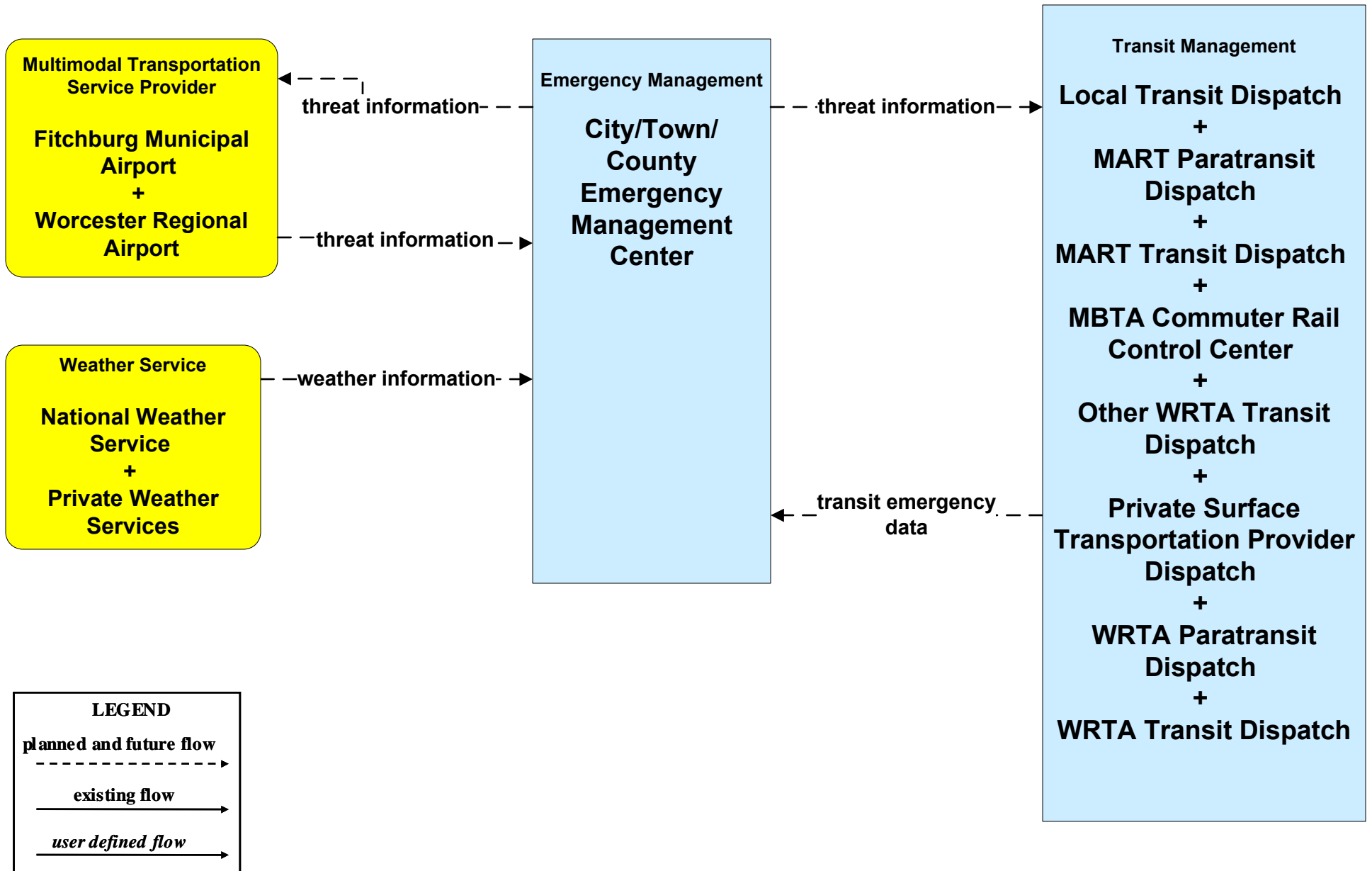
ATMS06 - Traffic Information Dissemination City of Leominster



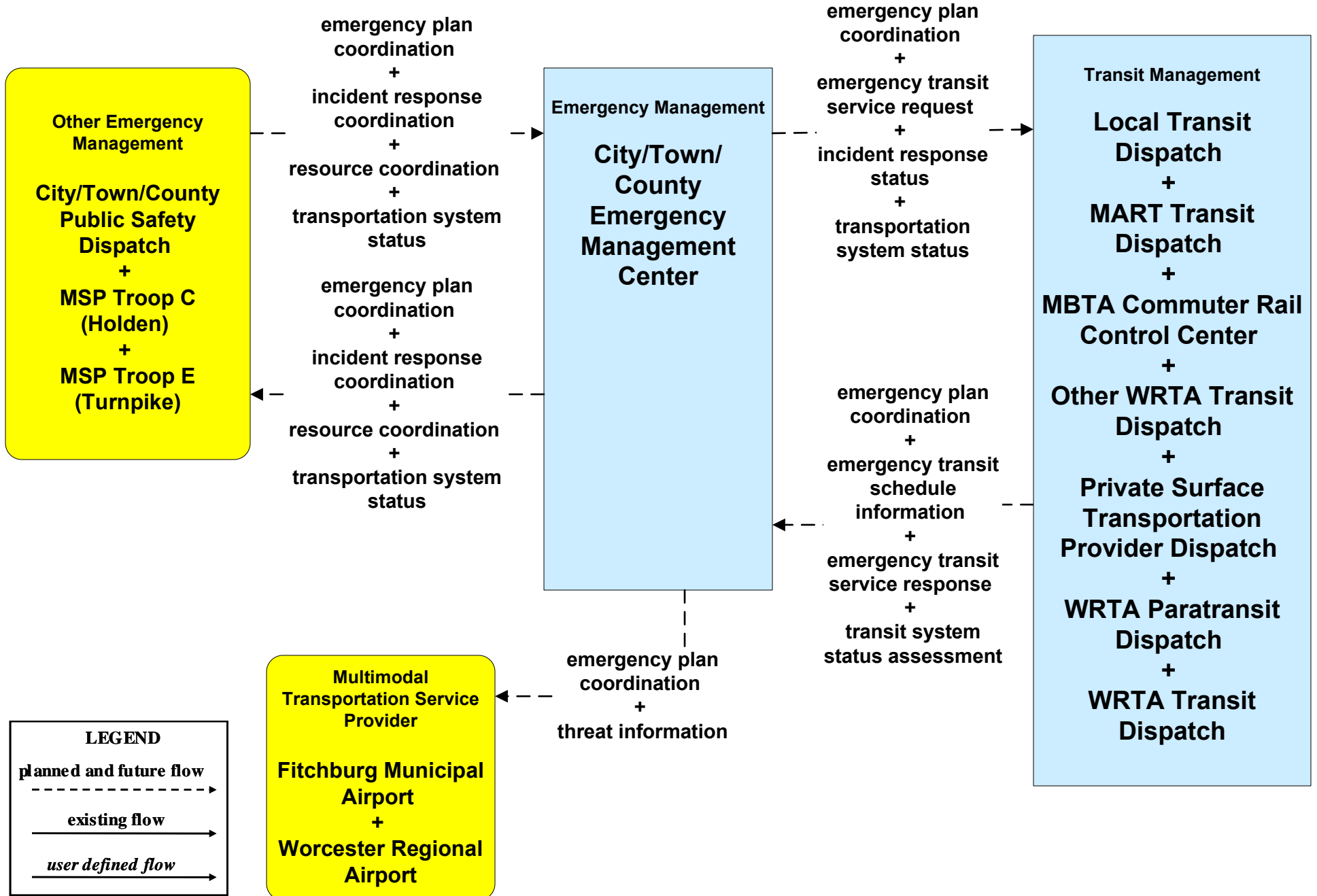
**ATMS08 - Incident Management
MassDOT - Highway Division (EM to Transit)**



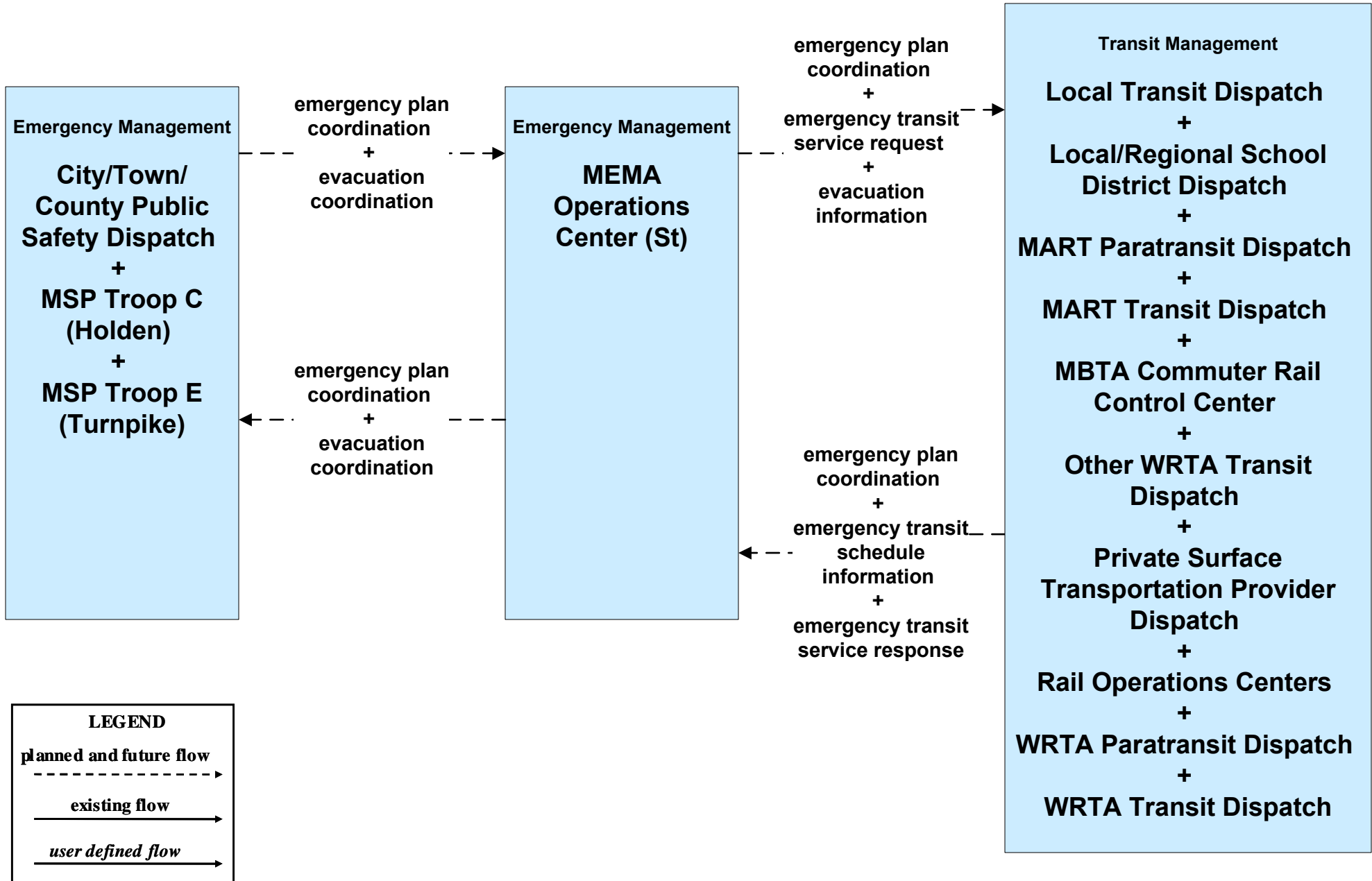
**EM07 - Early Warning System
City/Town/County Emergency Management Center (2 of 2)**



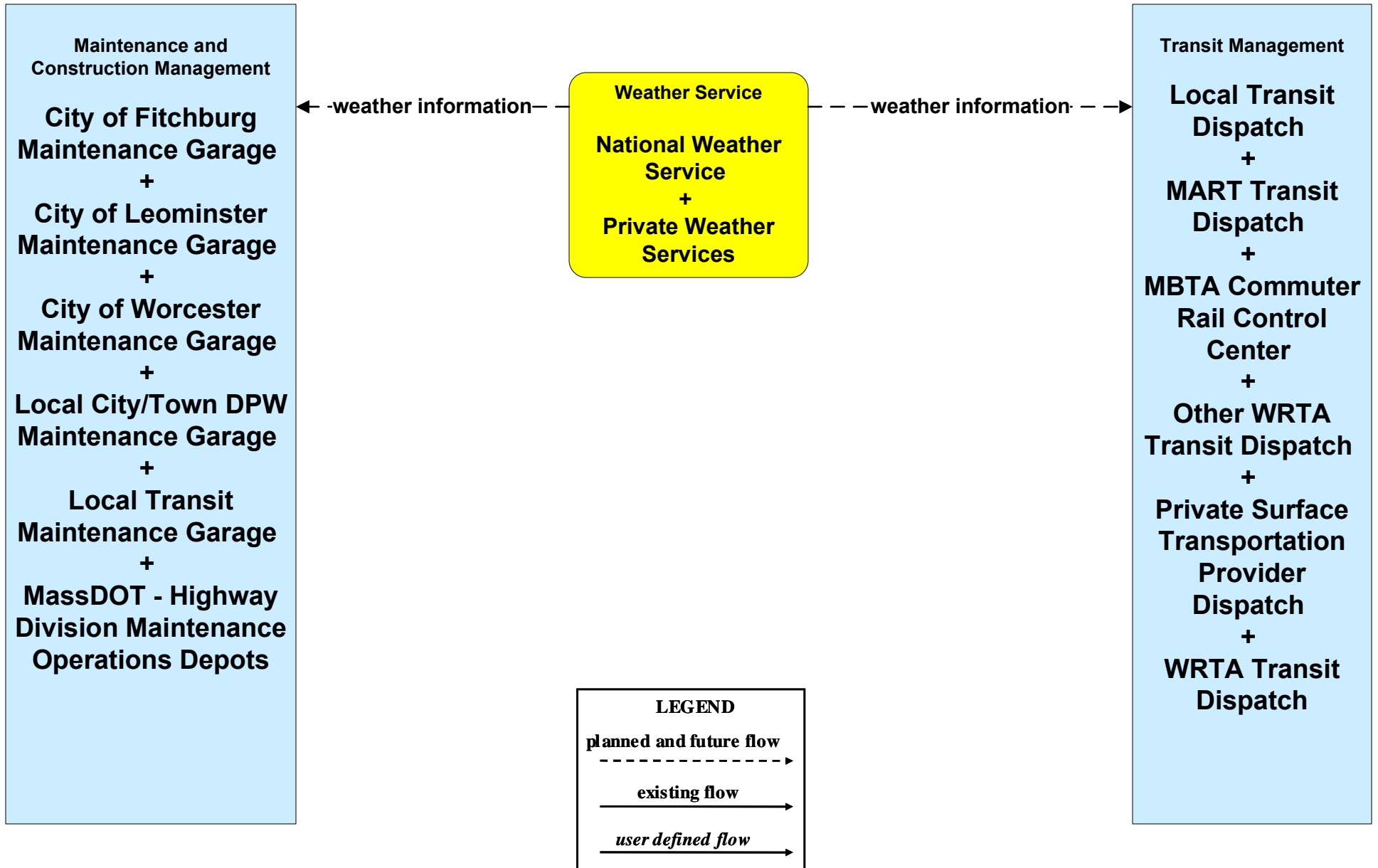
EM08 - Disaster Response
City/Town/County (2 of 2) (EM to Other EM, EM to TRMS)



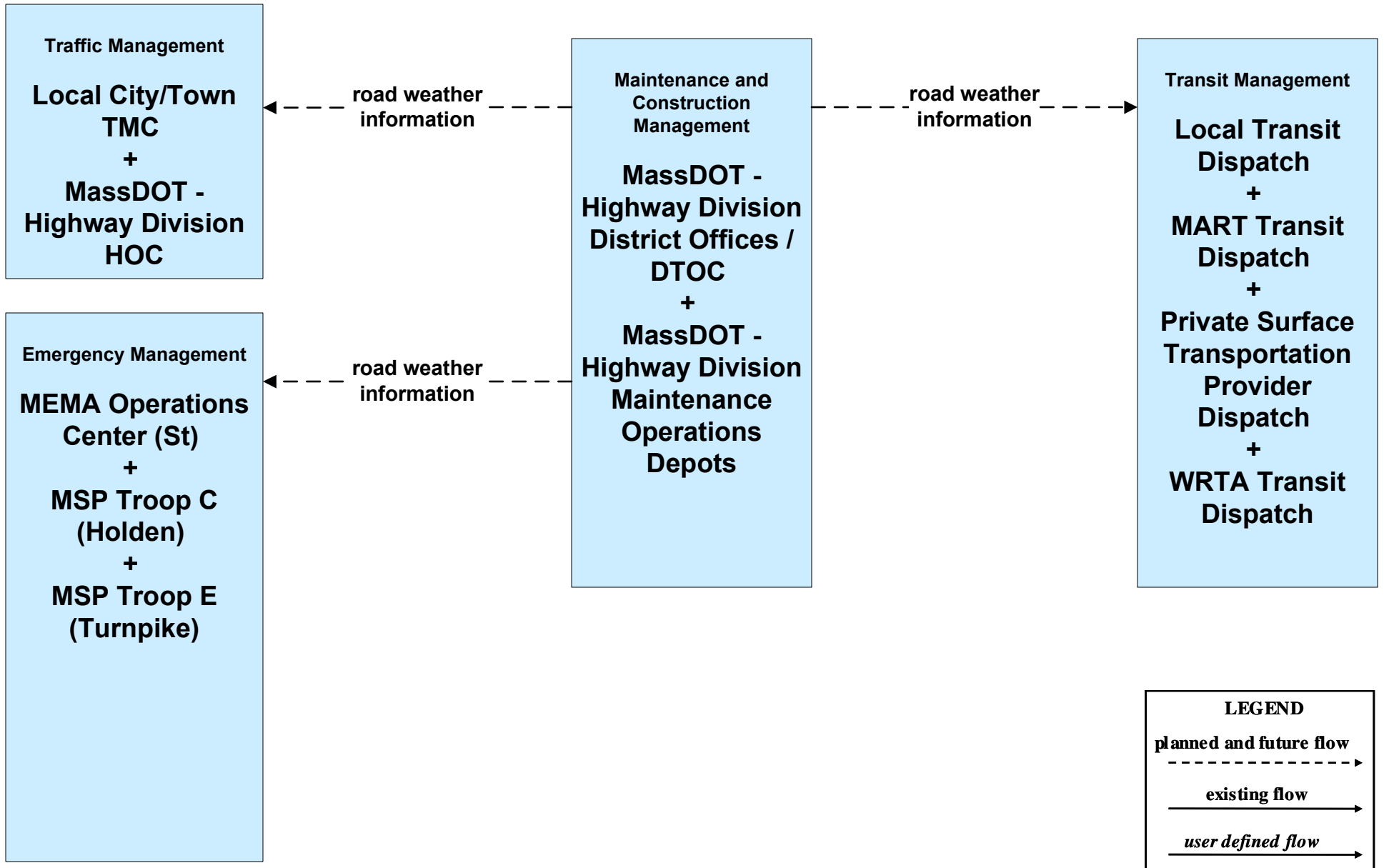
**EM09 - Evacuation and Reentry Management
MEMA (2 of 2) (EM to EM, EM to TRMS)**



**MC04 - Weather Information Processing and Distribution
National Weather Service (1 of 2)**



**MC04 - Weather Information Processing and Distribution
MassDOT - Highway Division (1 of 2)**



**MC10 - Maintenance and Construction Activity Coordination
MassDOT - Highway Division (2 of 2)**

