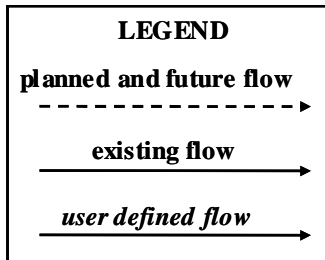
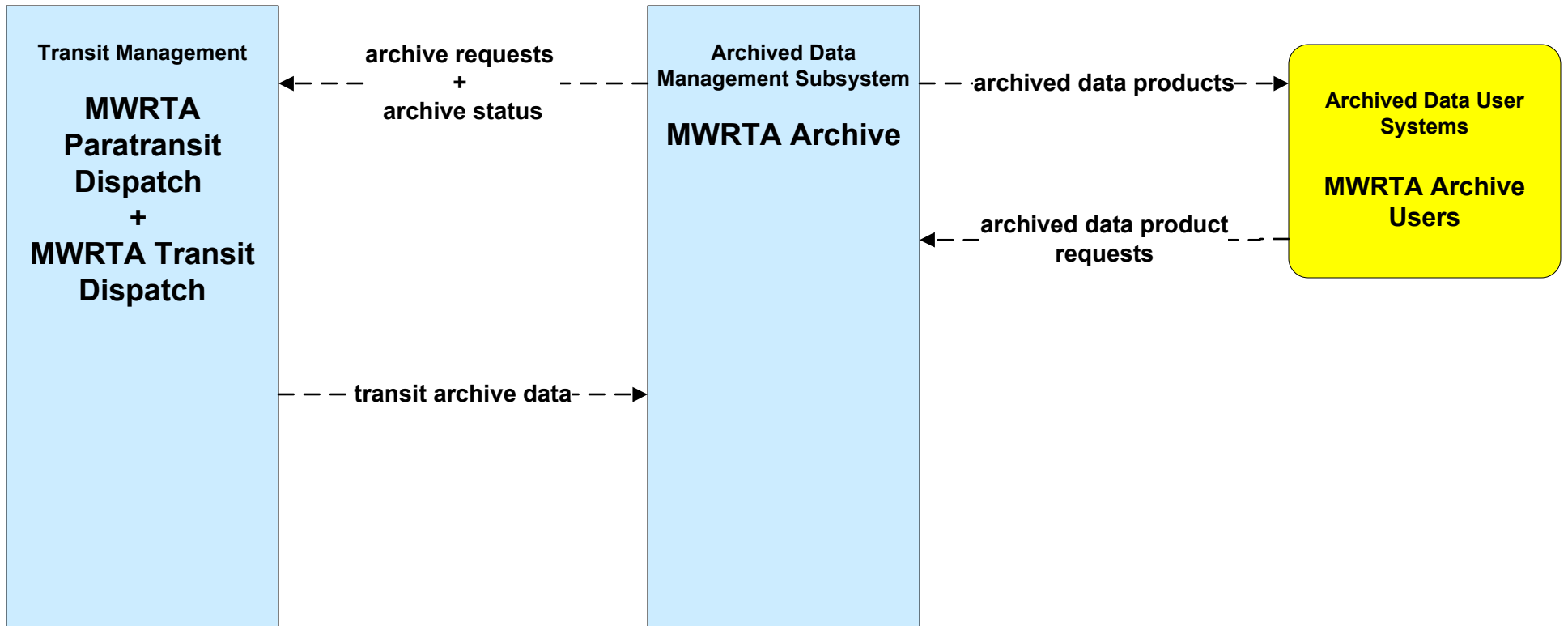
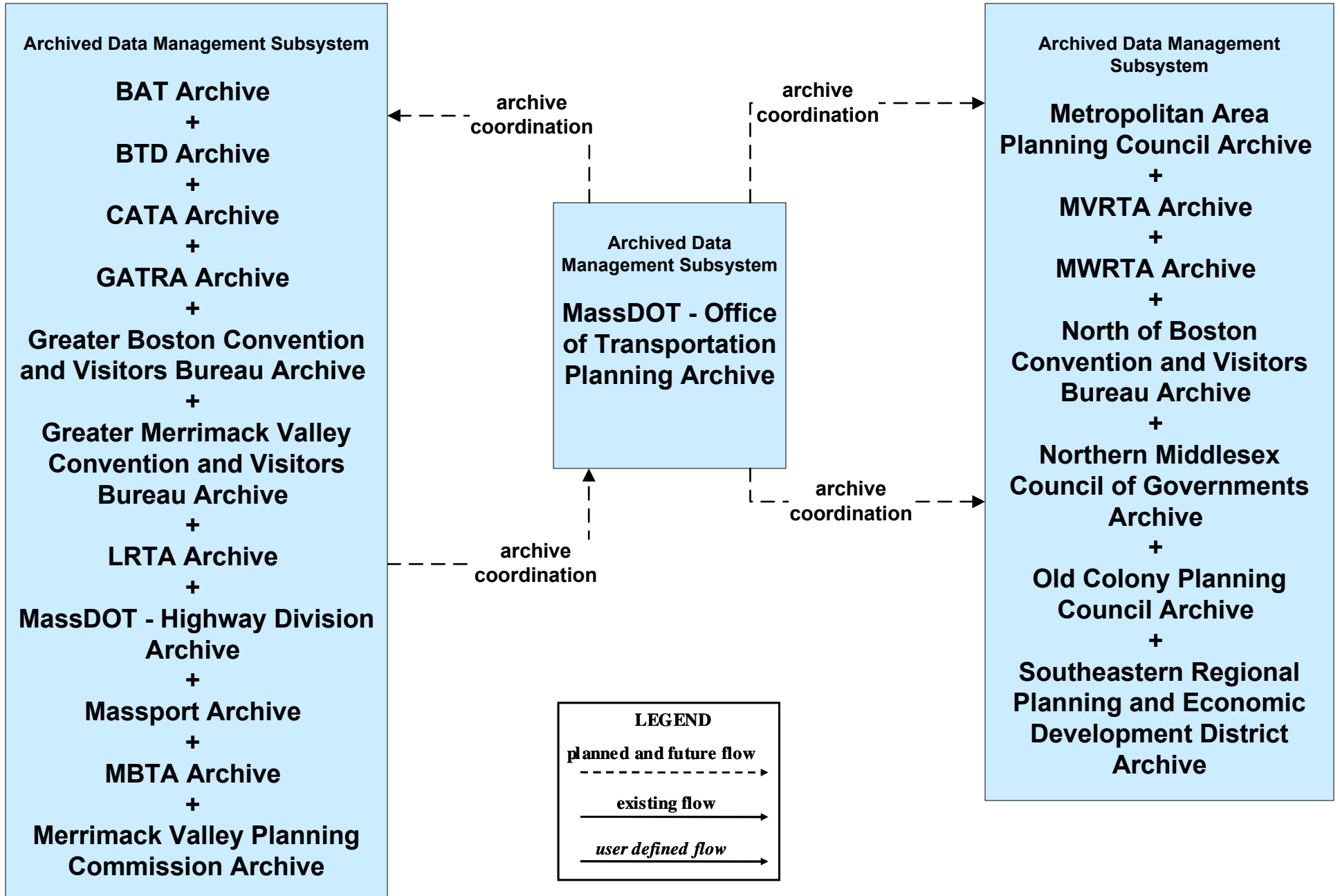


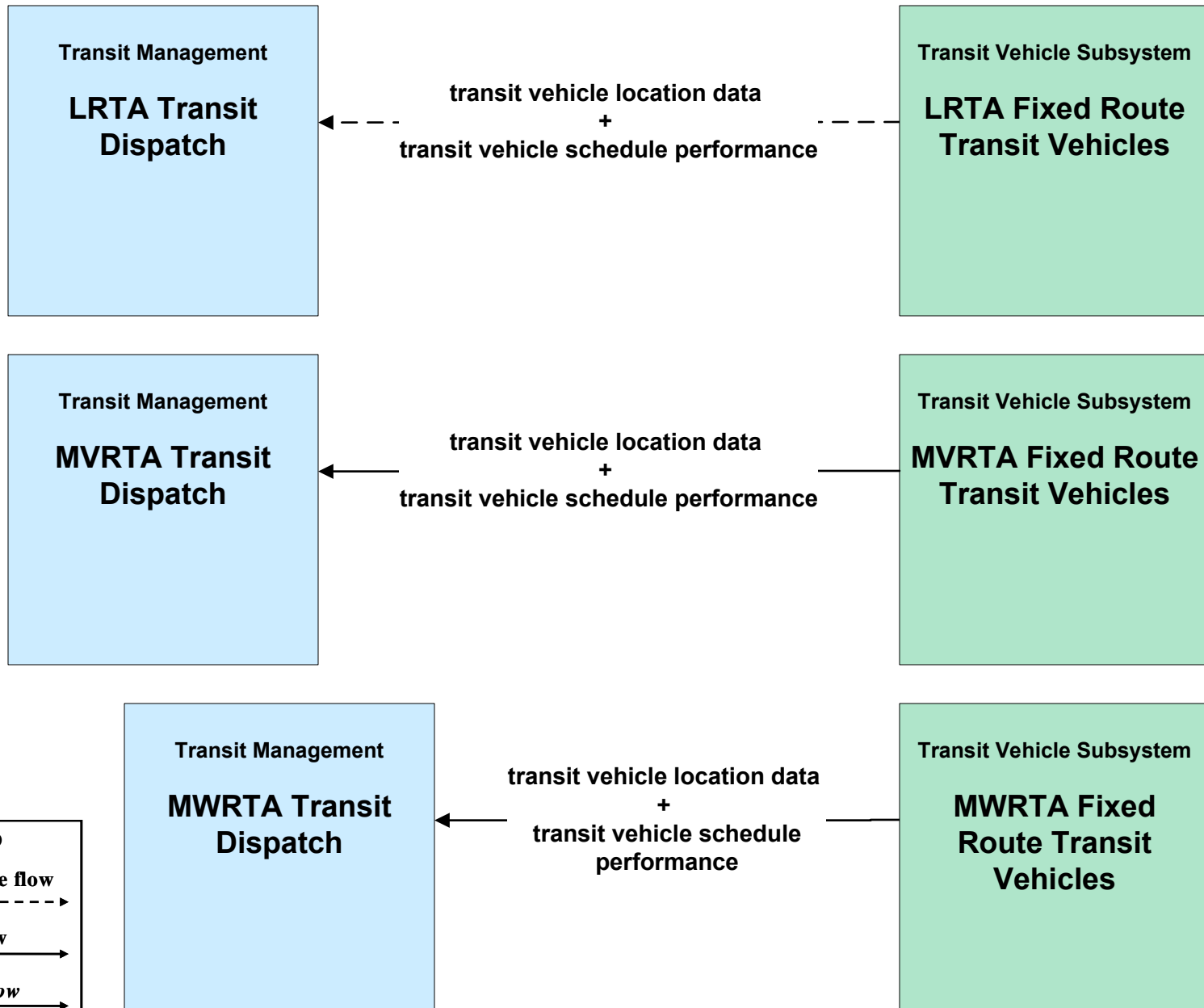
**AD1 - ITS Data Mart
MWRTA**



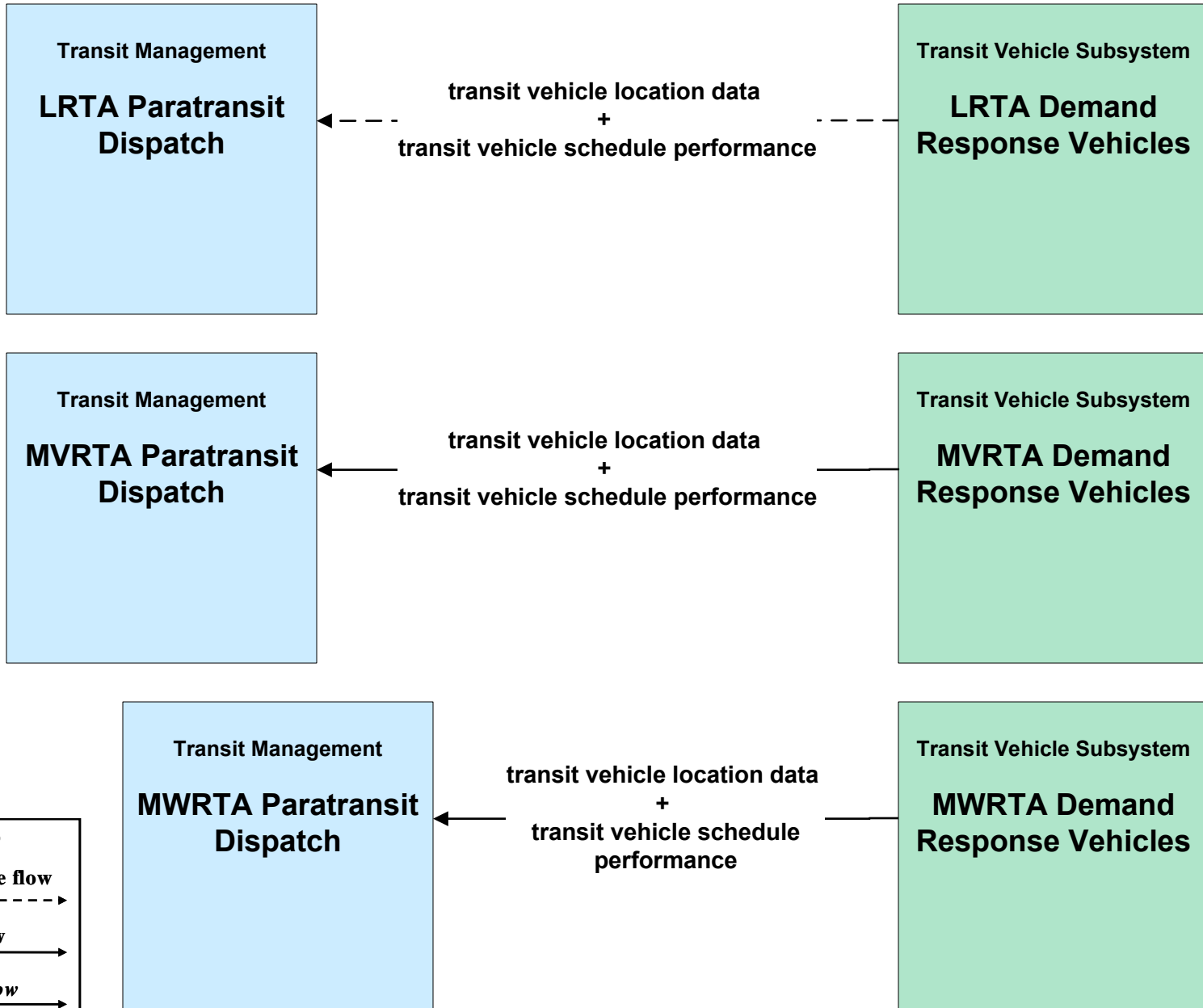
**AD3 - ITS Virtual Data Warehouse
MassDOT - Office of Transportation Planning**



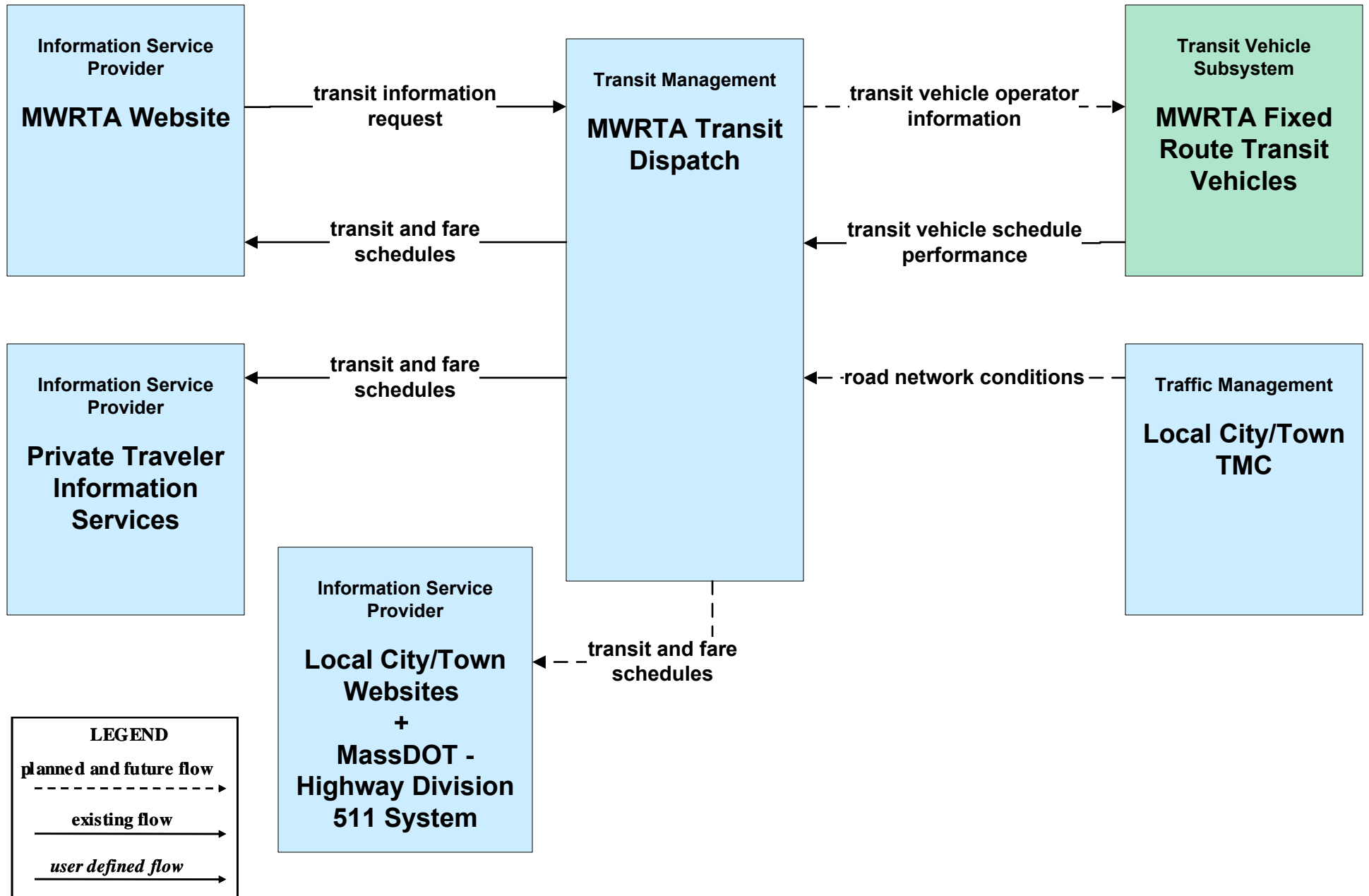
**APTS01 - Transit Vehicle Tracking
RTA (2 of 2)**



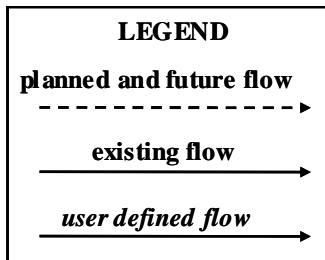
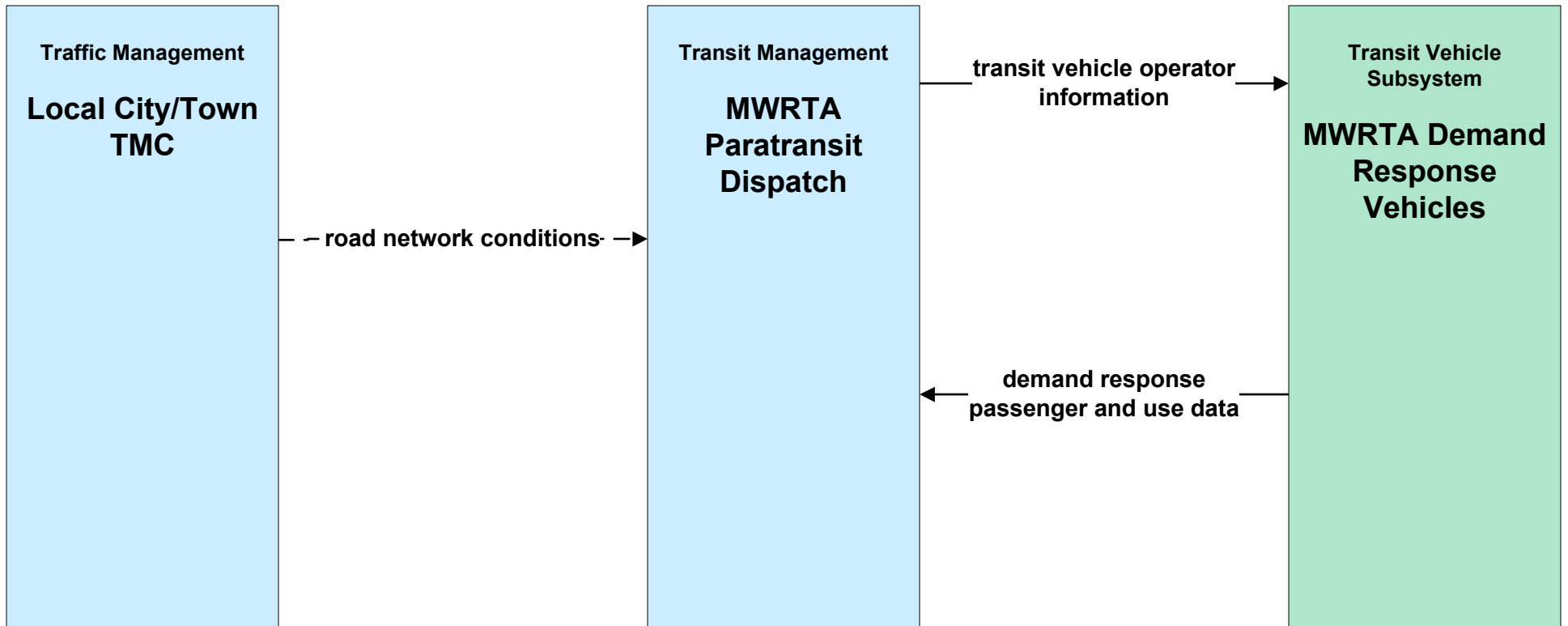
**APTS01 - Transit Vehicle Tracking
RTA Paratransit (2 of 2)**



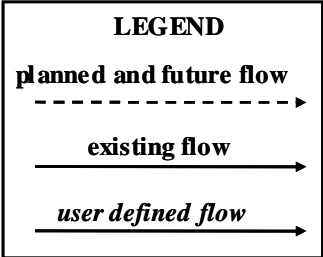
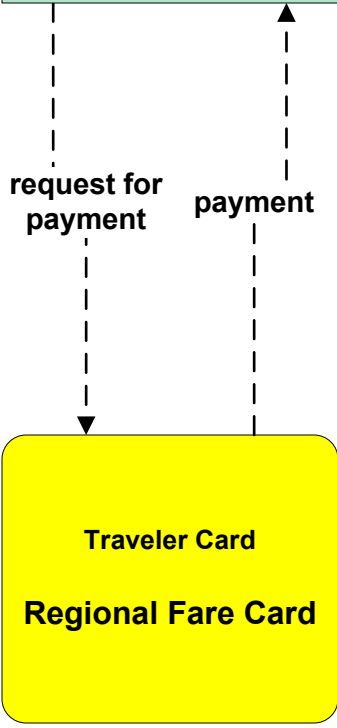
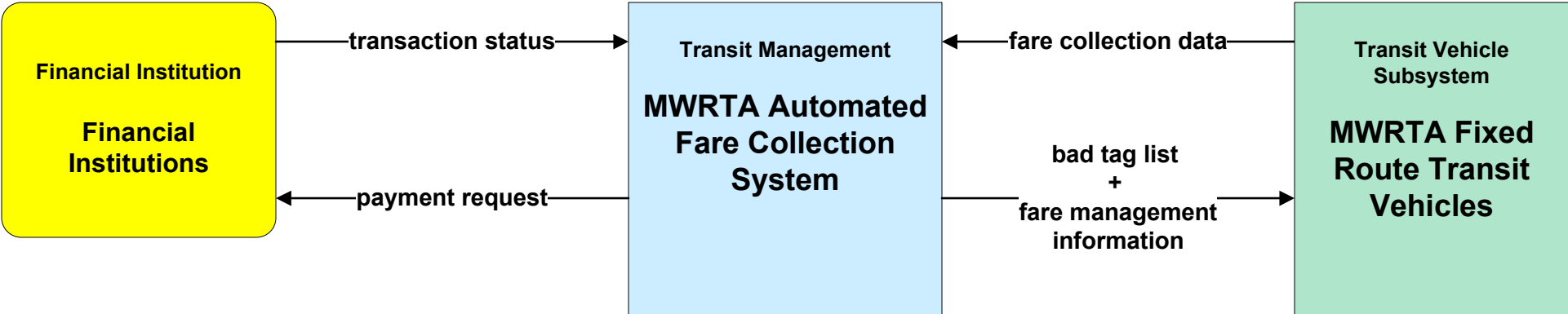
APTS02 - Transit Fixed-Route Operations MWRTA



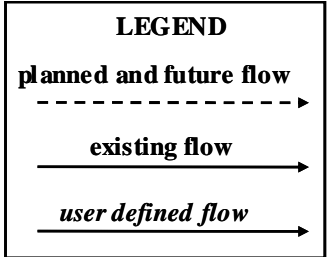
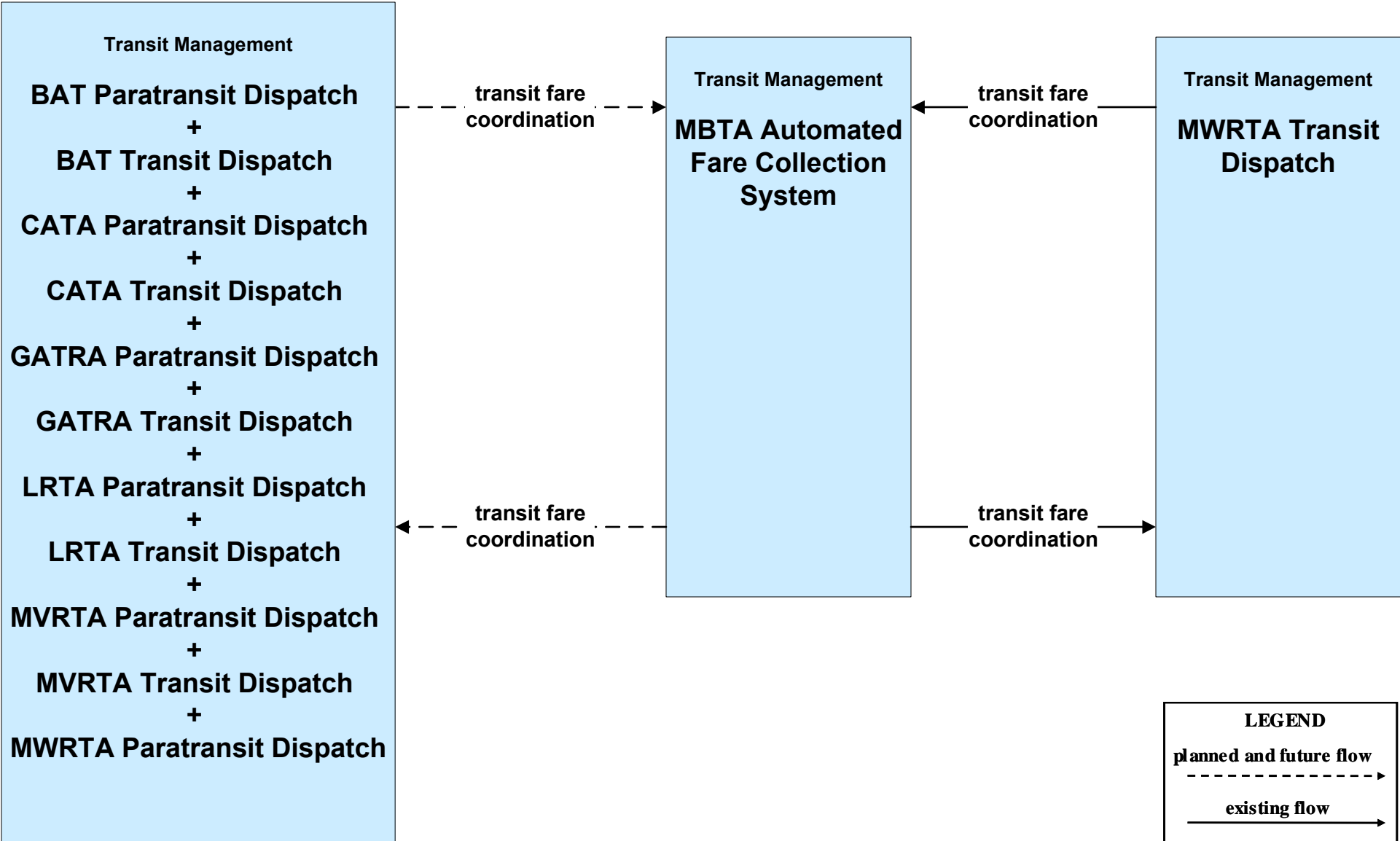
APTS03 - Demand Response Transit Operations MWRTA



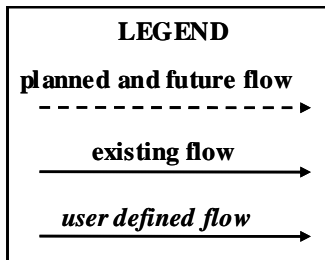
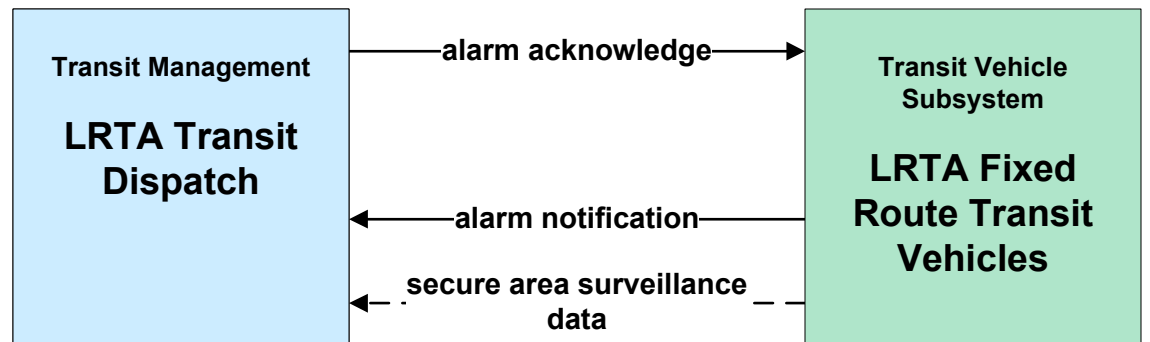
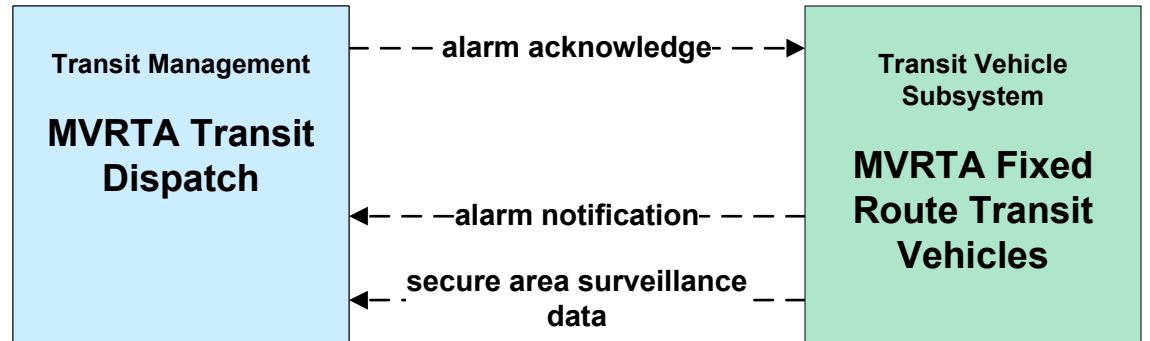
**APTS04 - Transit Passenger and Fare Payment
MWRTA**



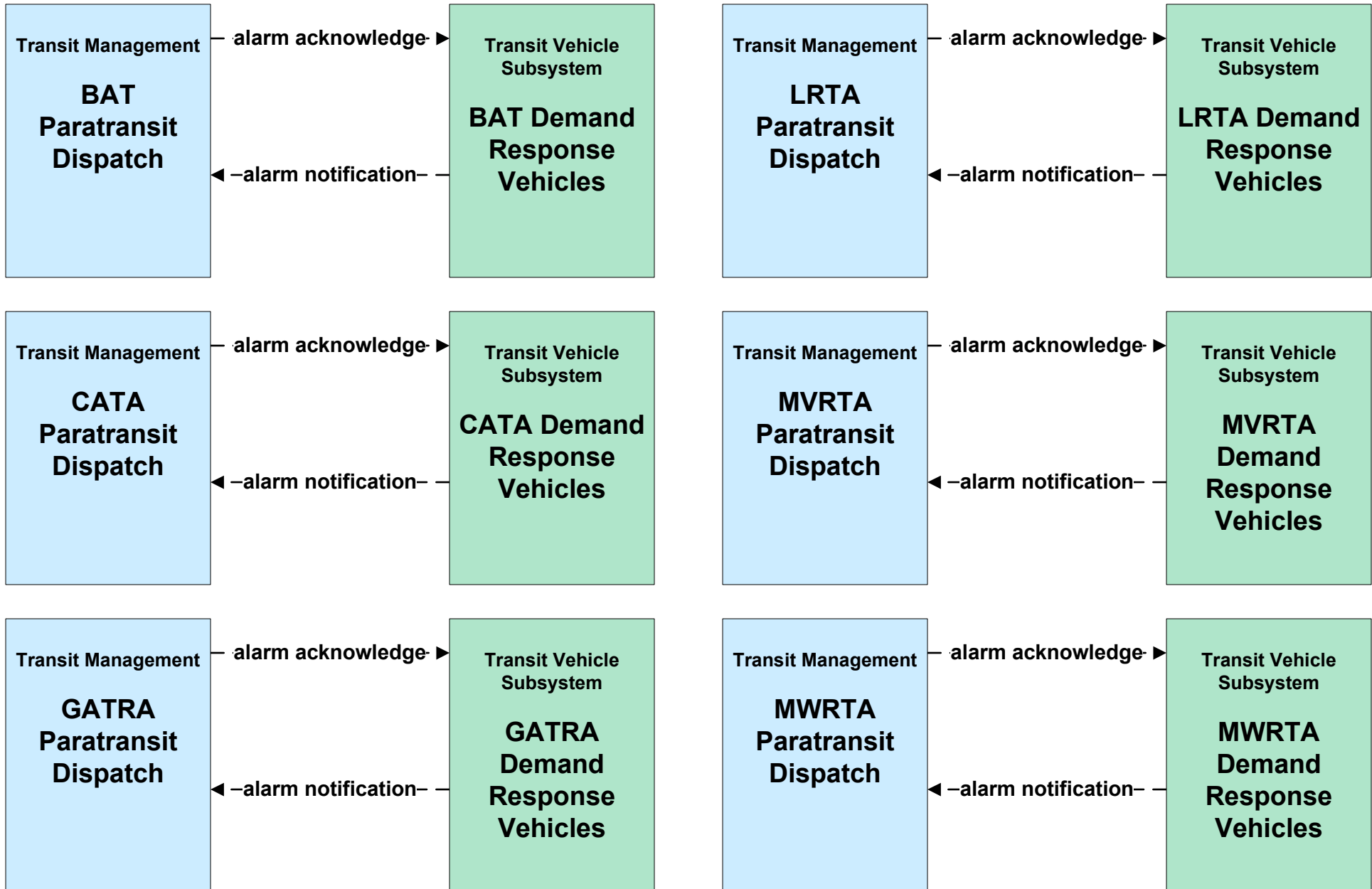
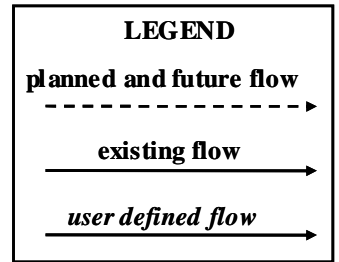
**APTS04 - Transit Passenger and Fare Payment
MBTA**



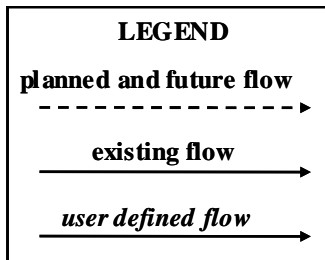
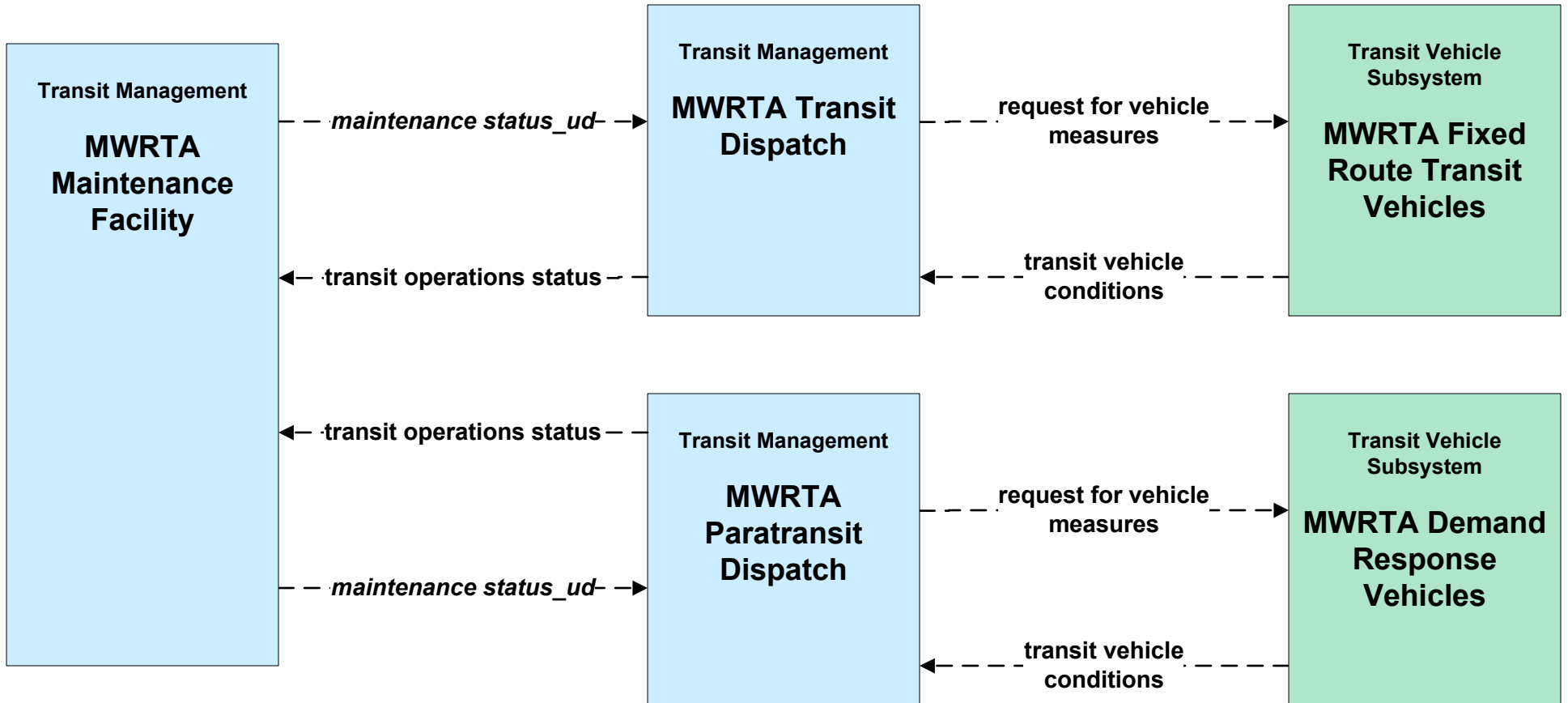
APTS05 - Transit Security RTA (2 of 2)



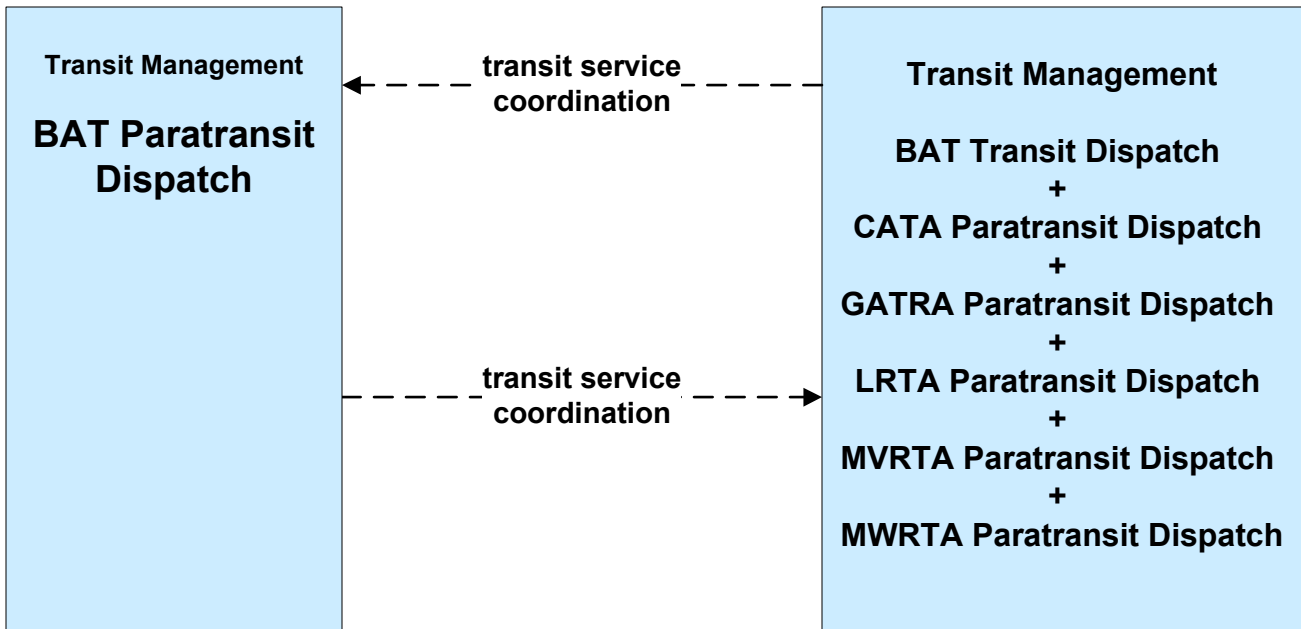
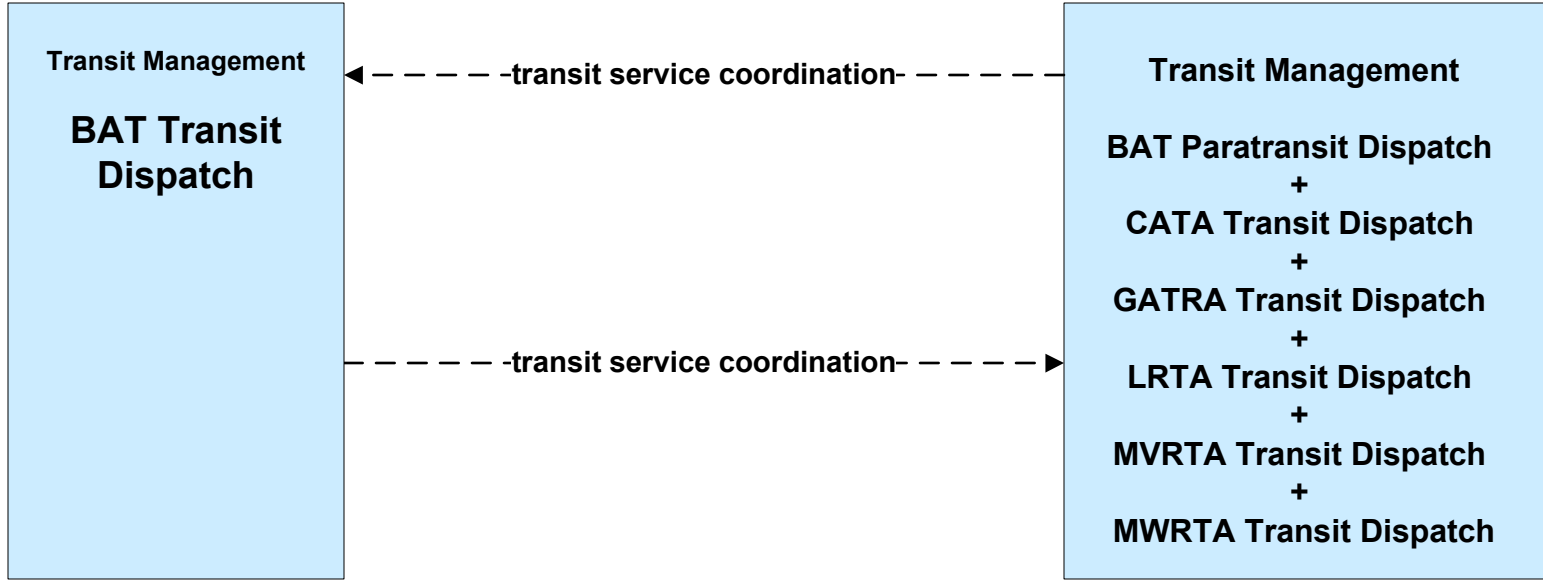
**APTS05 - Transit Security
RTA Paratransit**



**APTS06 - Transit Vehicle Maintenance
MWRTA**



**APTS07 - Multimodal Coordination
BAT**



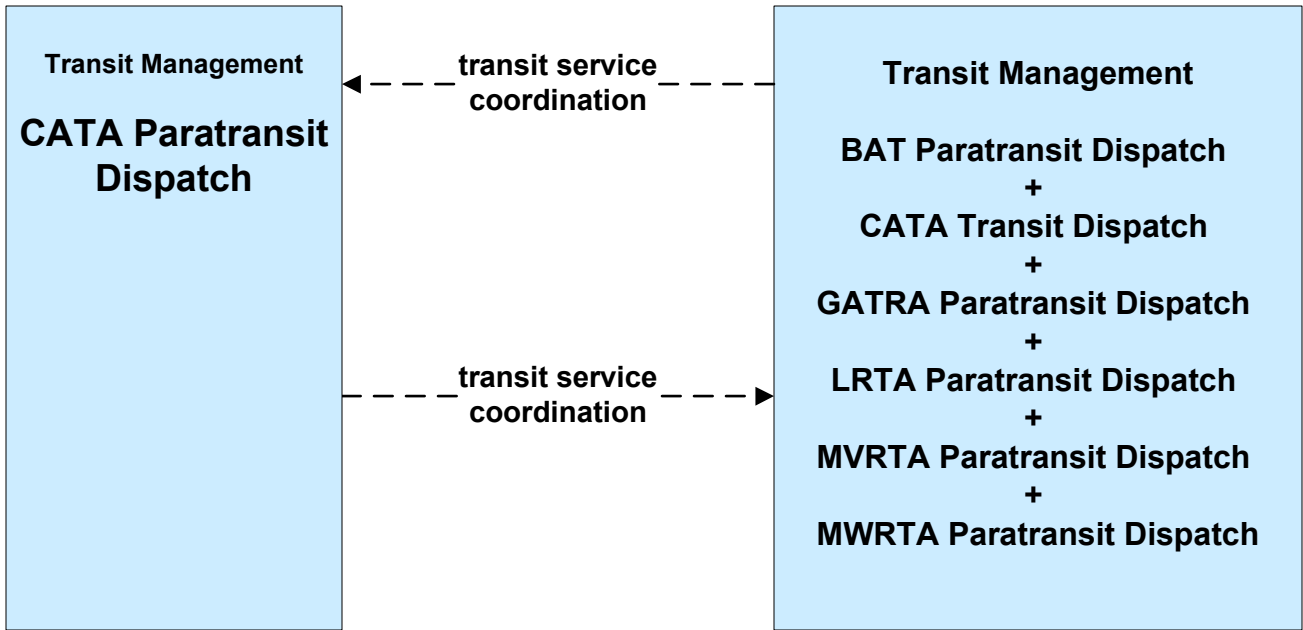
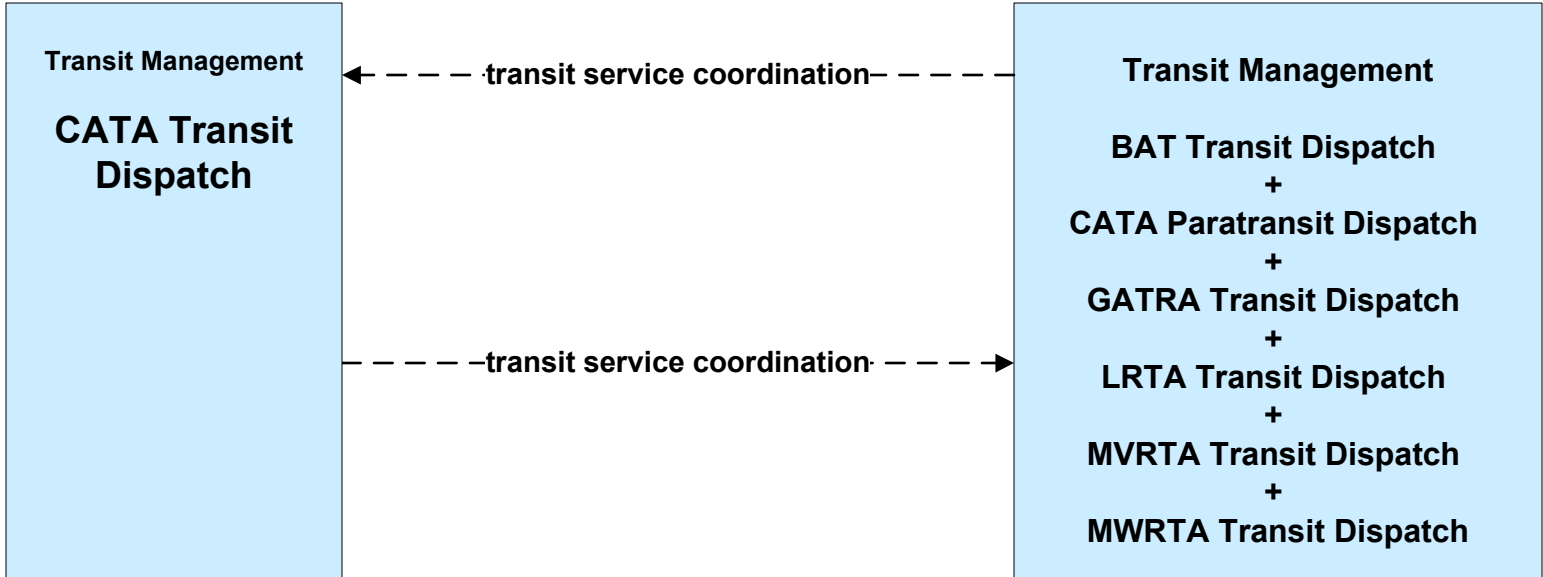
LEGEND

planned and future flow
----->

existing flow
—————>

user defined flow
—————>

**APTS07 - Multimodal Coordination
CATA**



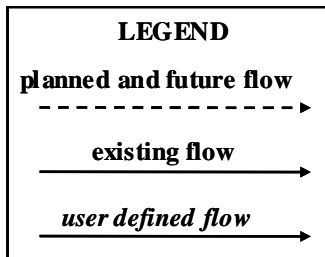
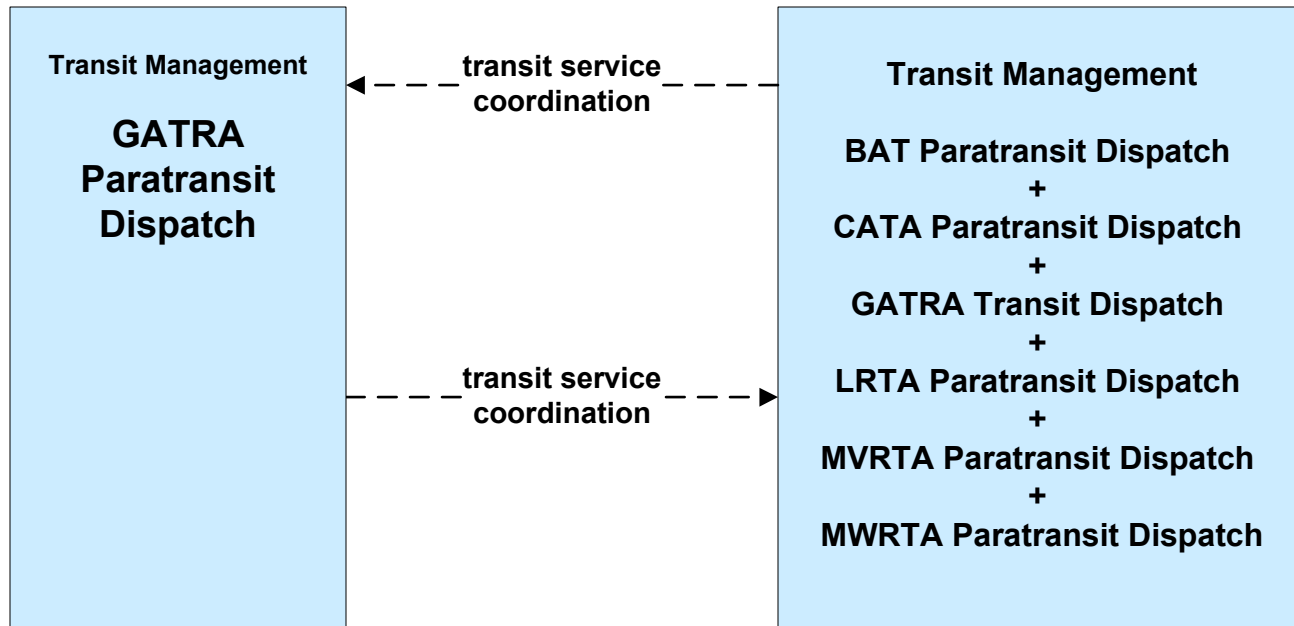
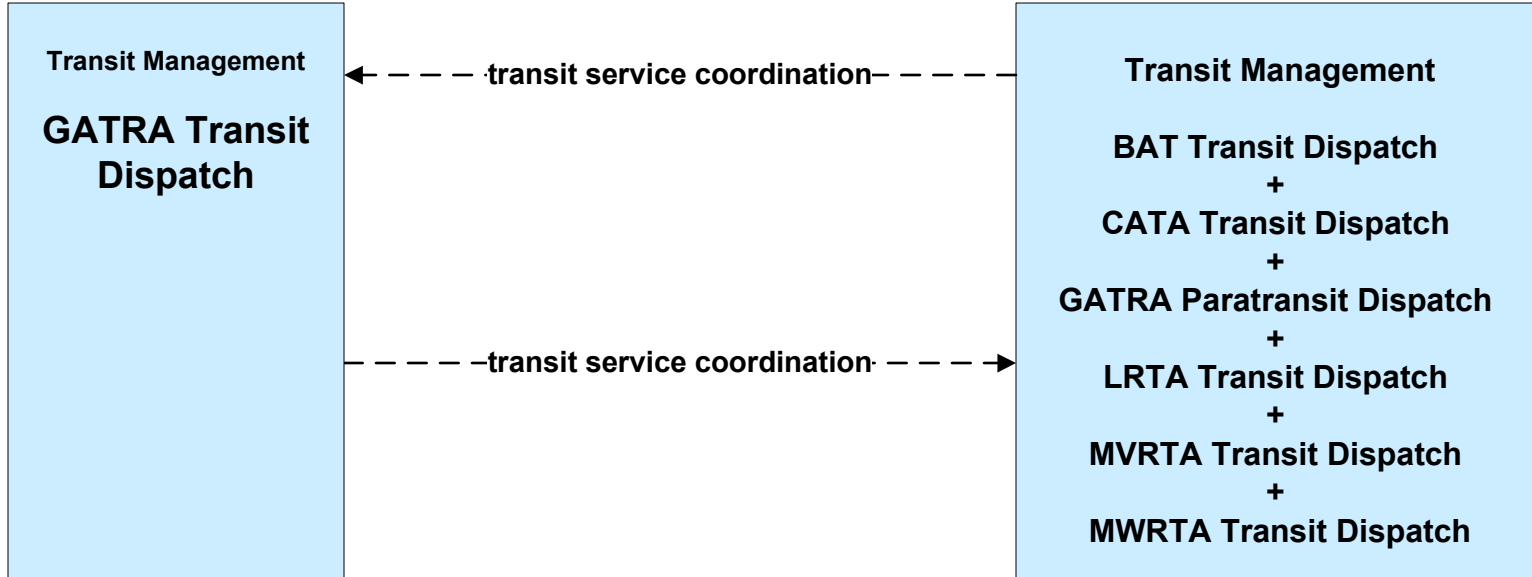
LEGEND

planned and future flow
----->

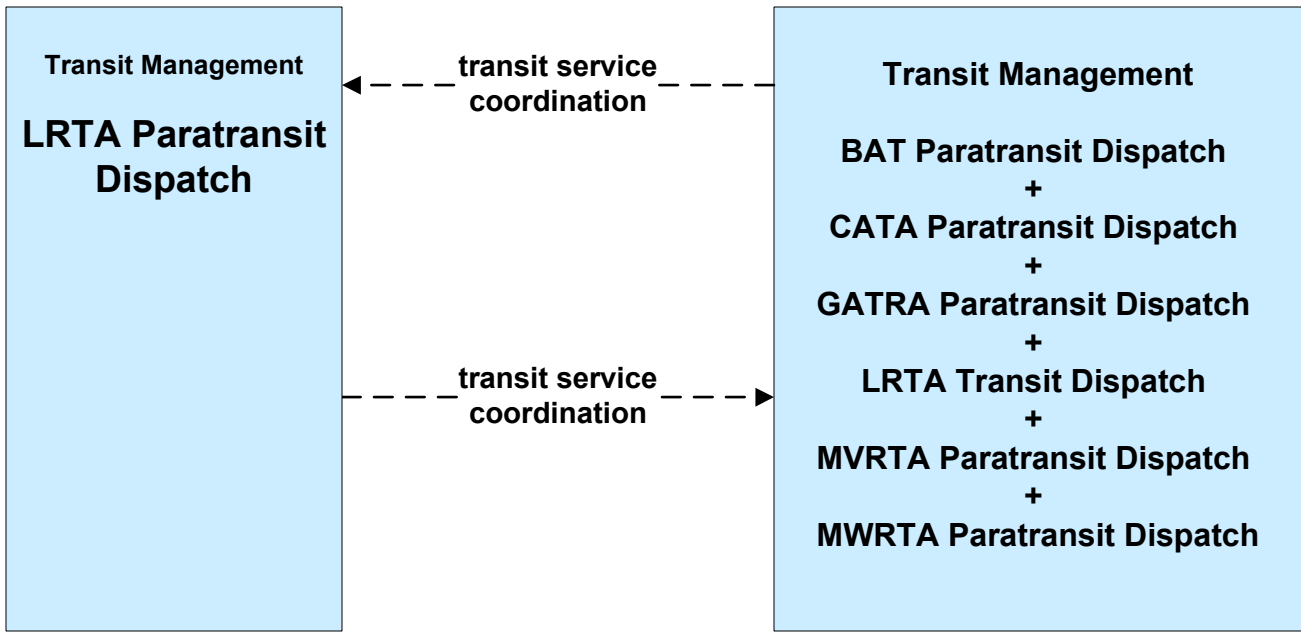
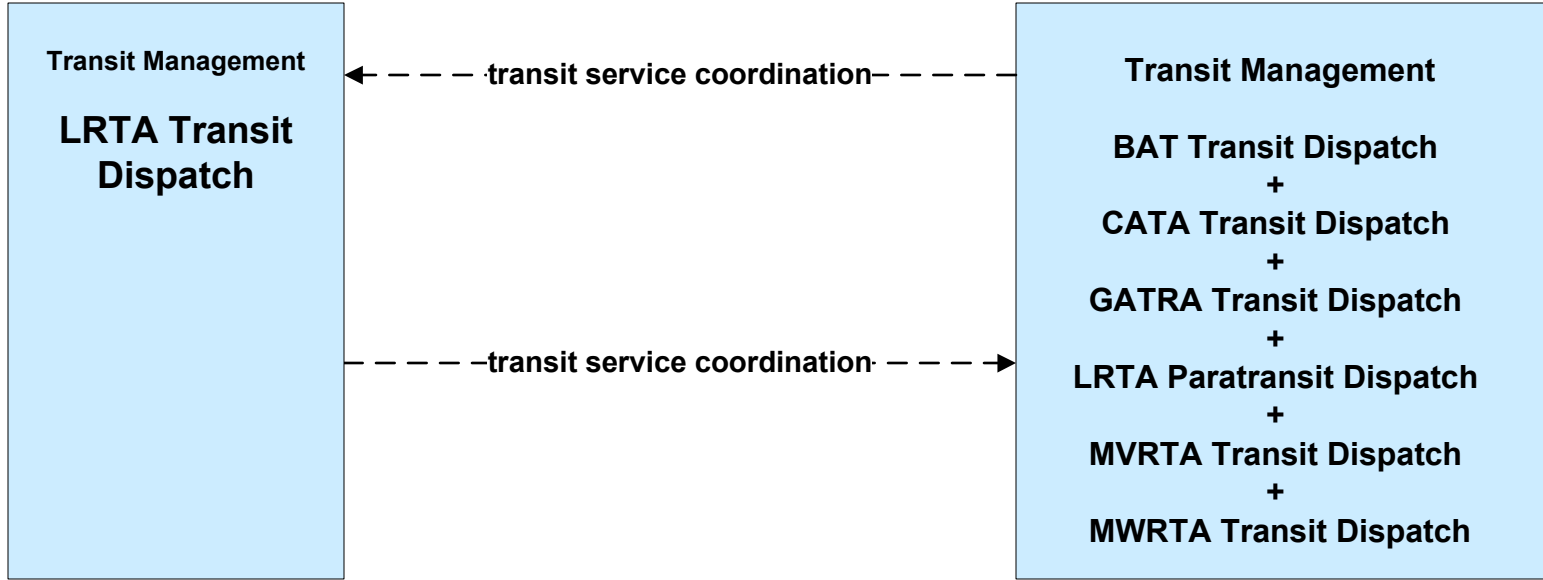
existing flow
—————>

user defined flow
—————>

**APTS07 - Multimodal Coordination
GATRA**



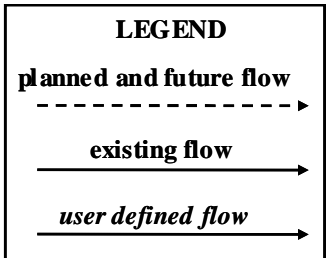
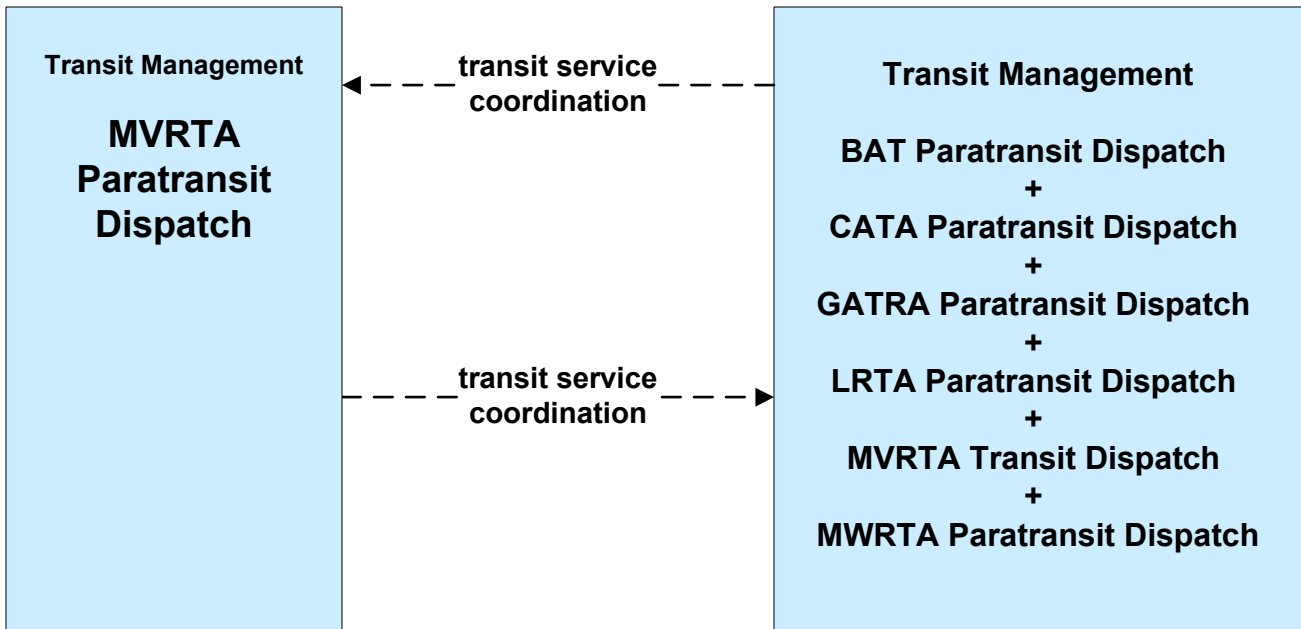
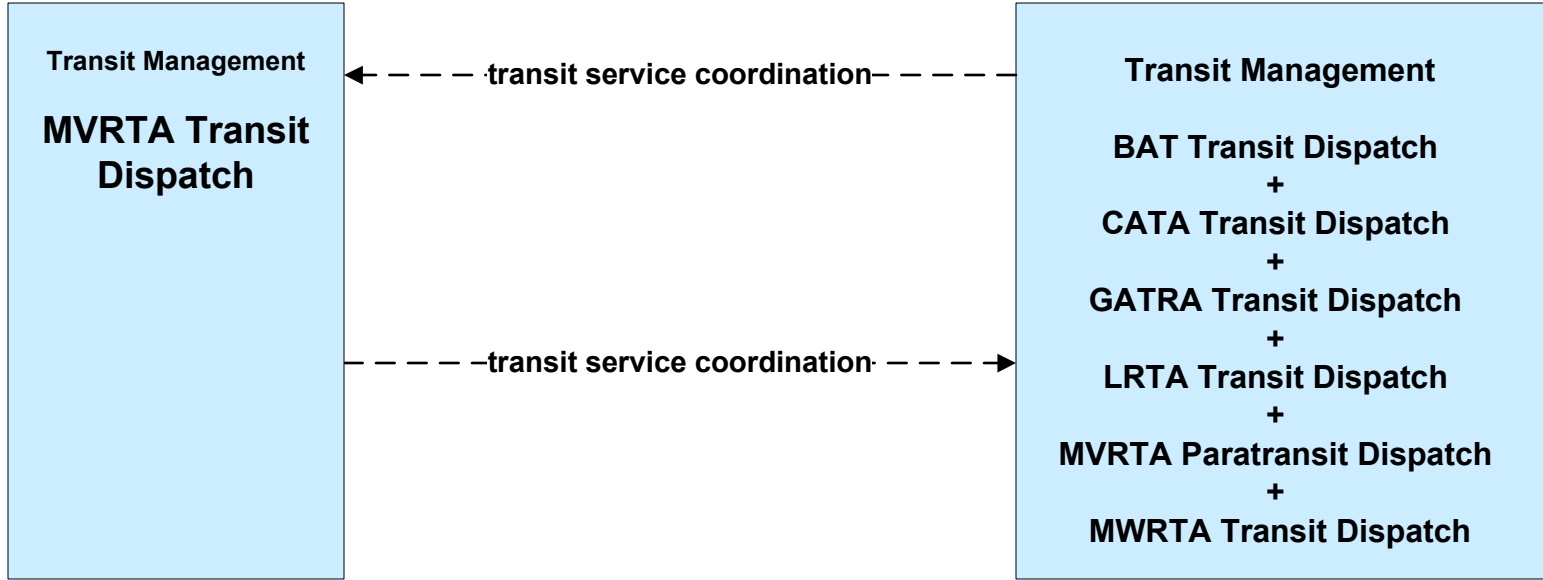
**APTS07 - Multimodal Coordination
LRTA**



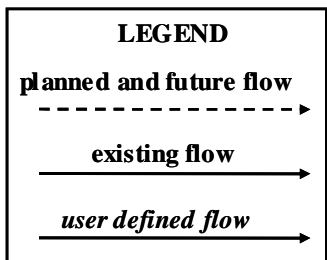
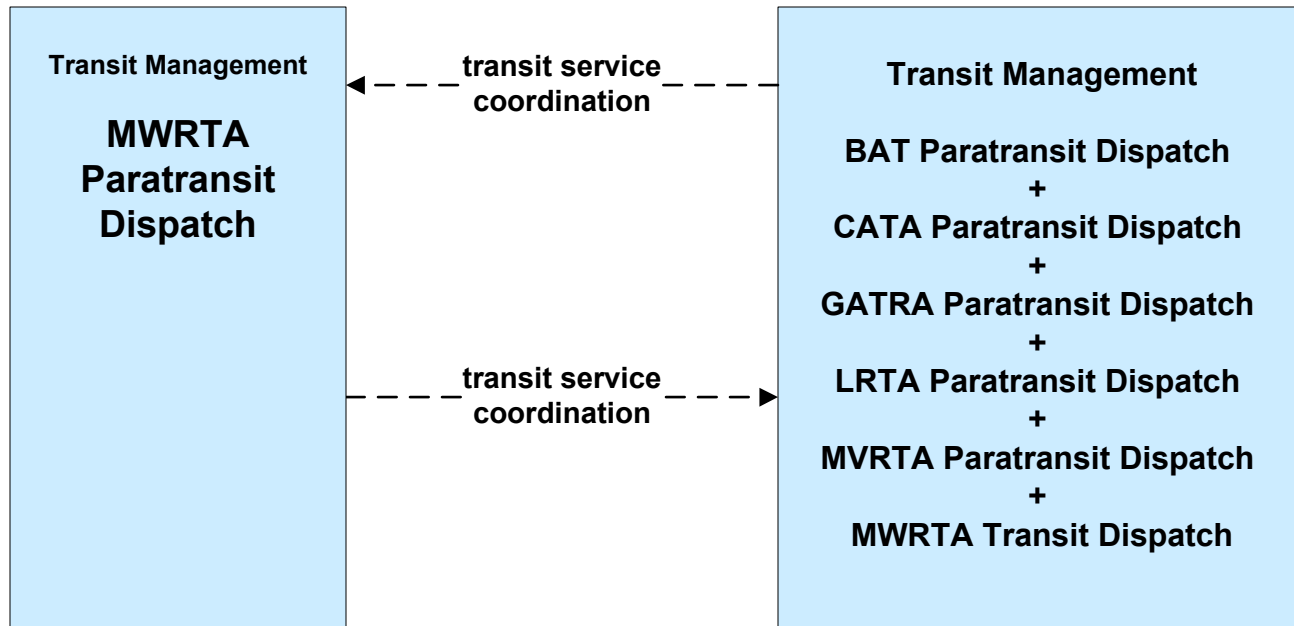
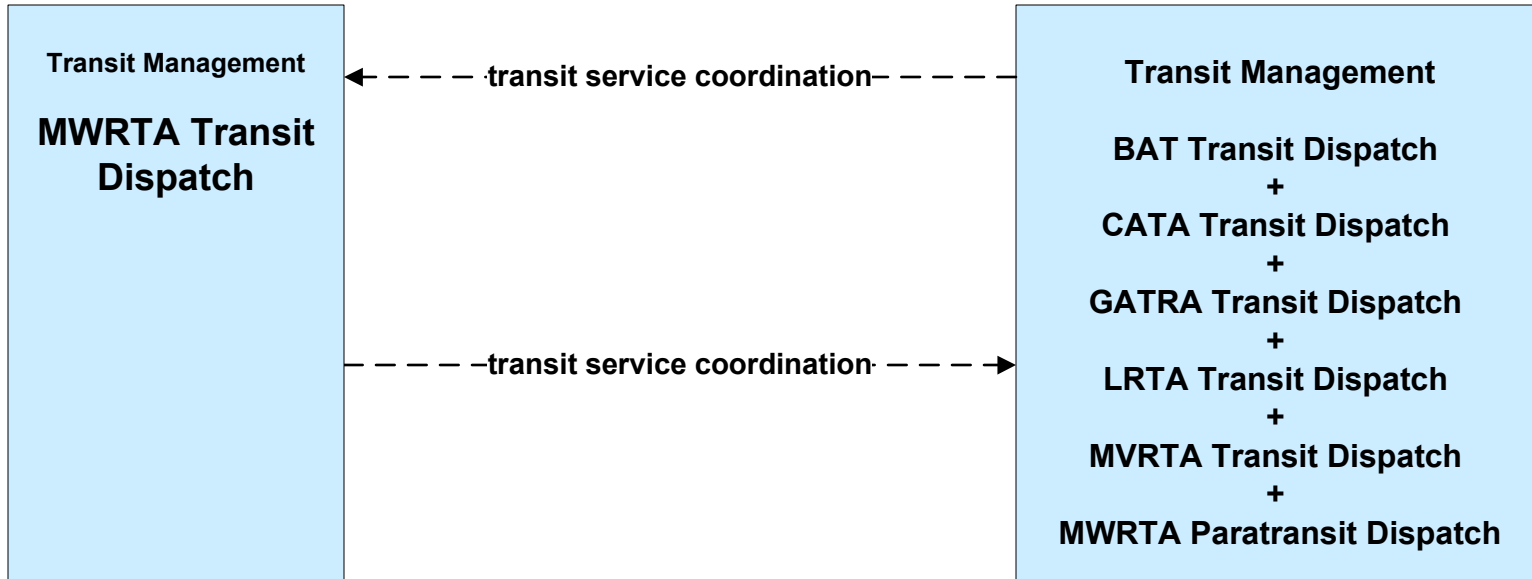
LEGEND

- planned and future flow* (dashed arrow)
- existing flow* (solid arrow)
- user defined flow* (solid arrow)

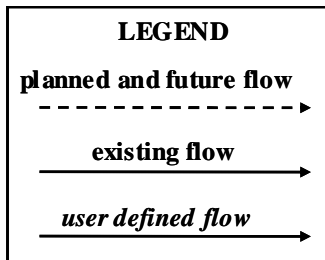
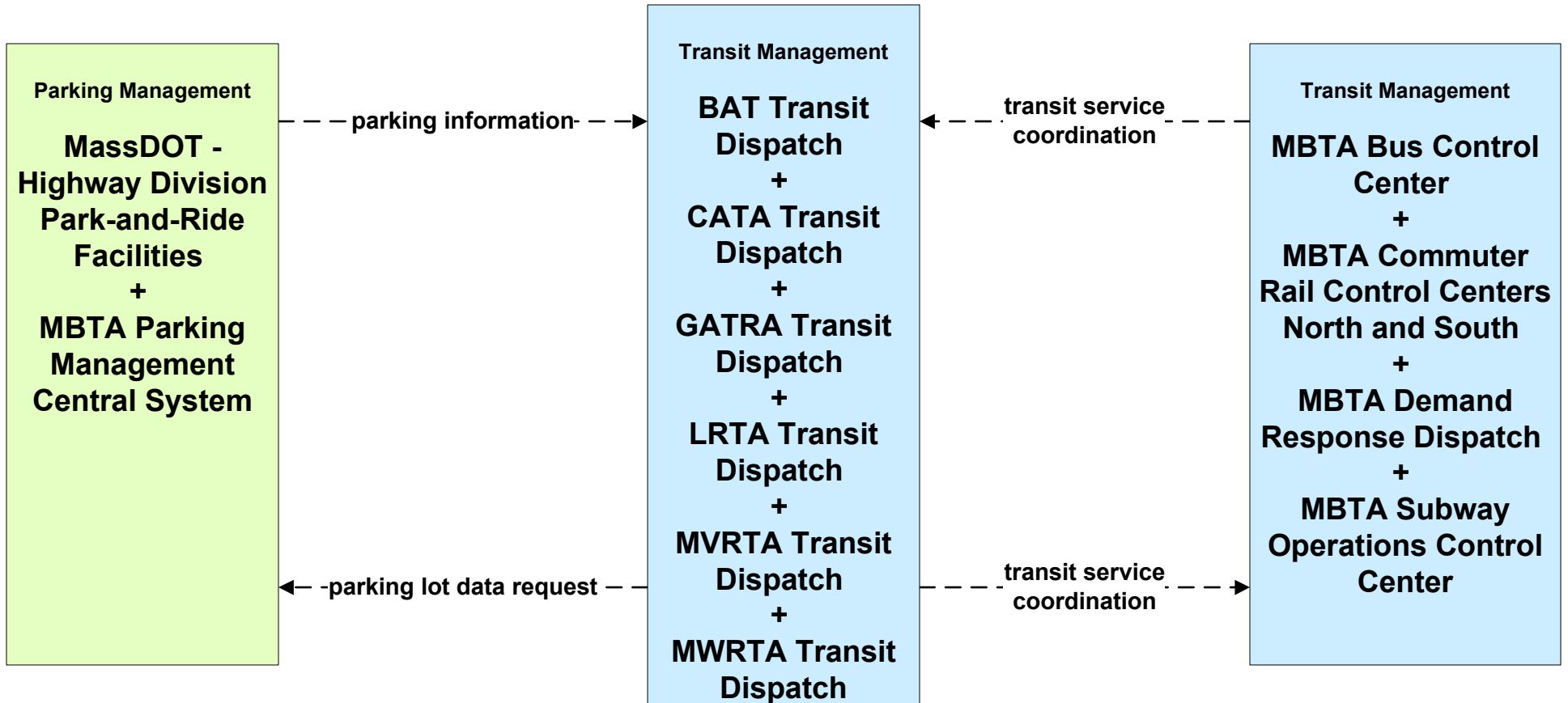
**APTS07 - Multimodal Coordination
MVRTA**



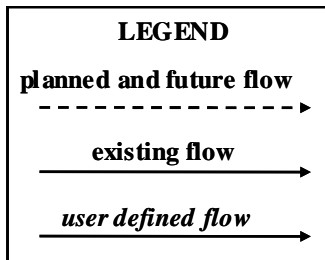
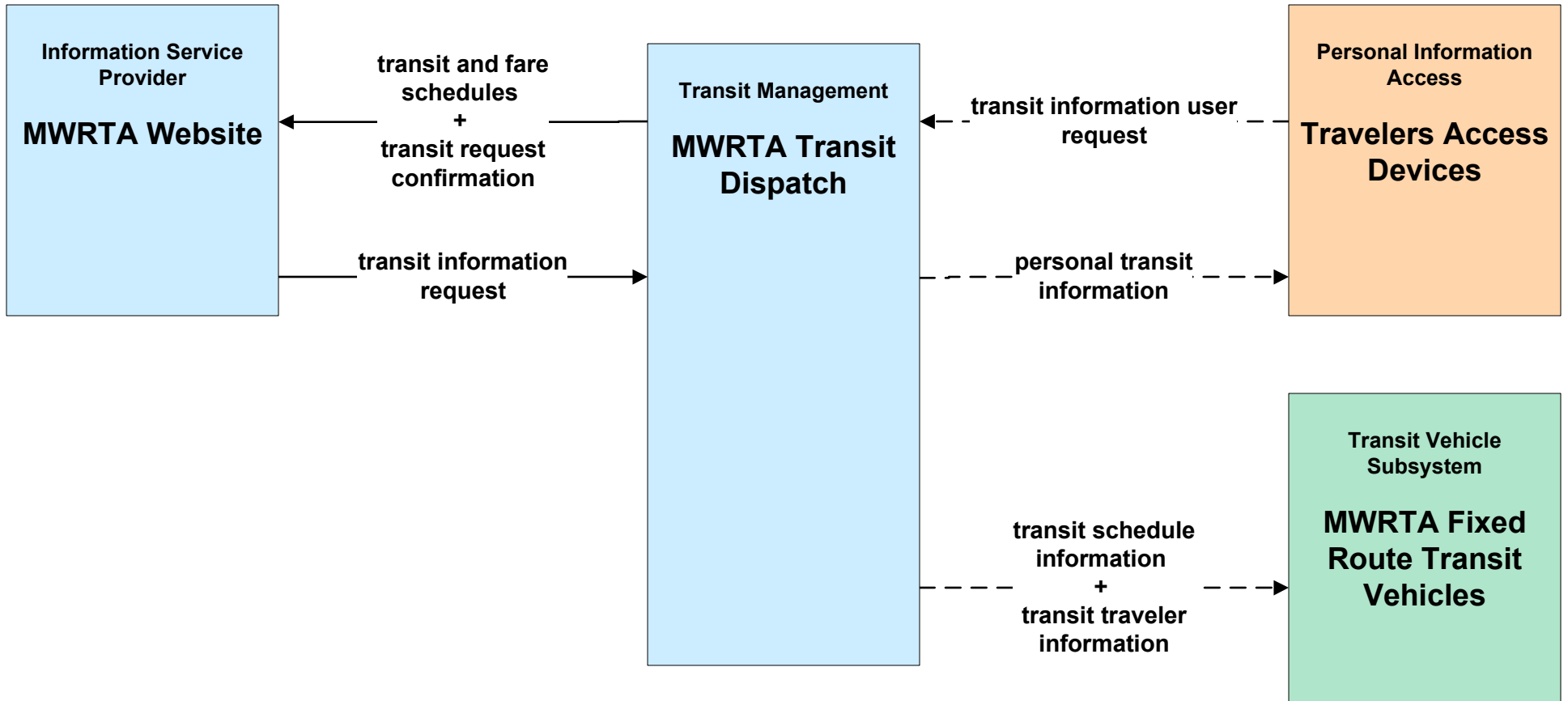
**APTS07 - Multimodal Coordination
MWRTA**



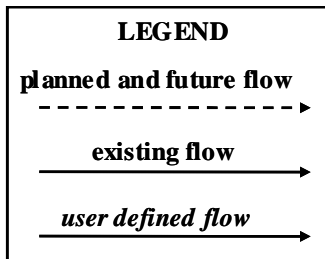
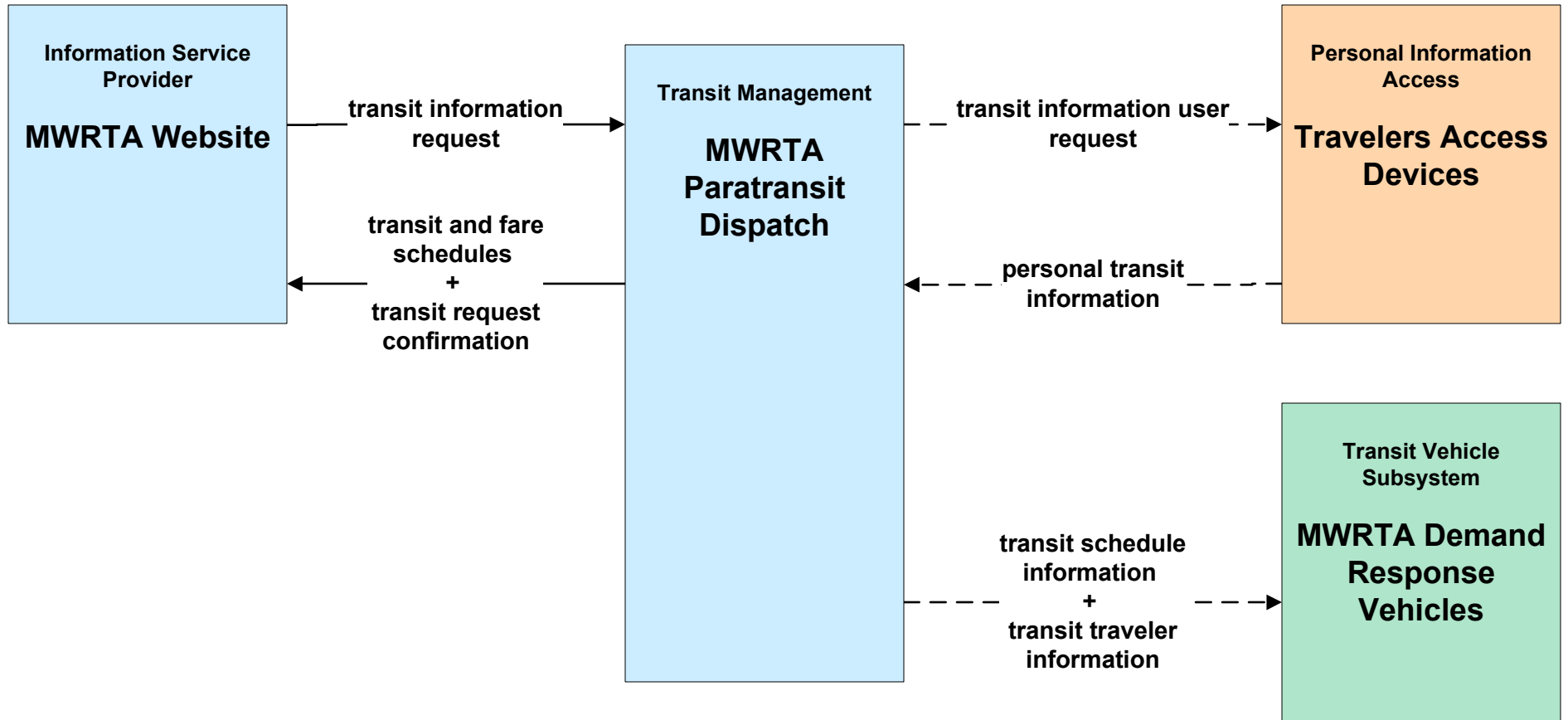
**APTS07 - Multimodal Coordination
RTA**



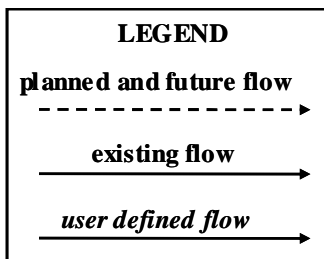
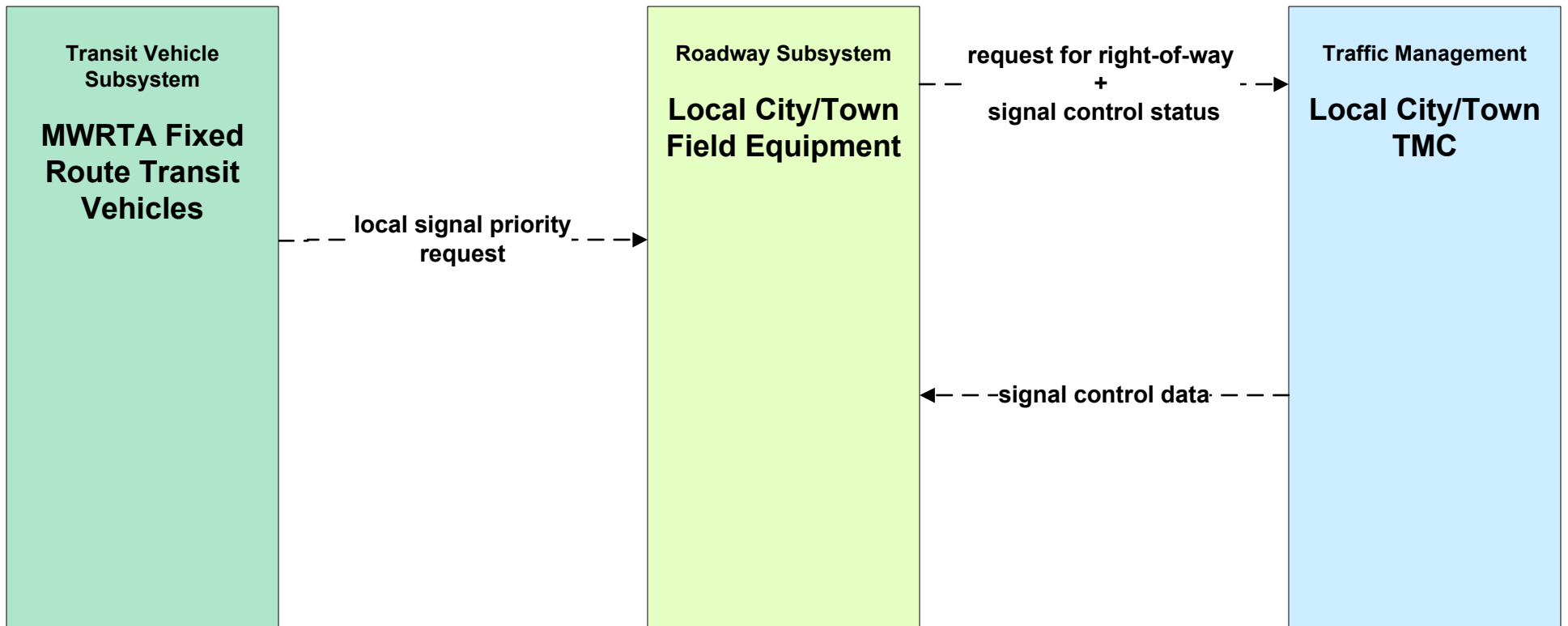
**APTS08 - Transit Traveler Information
MWRTA (1 of 2)**



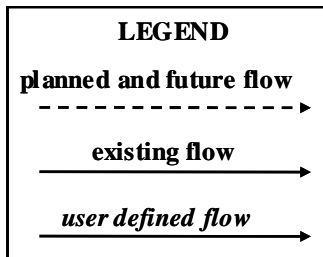
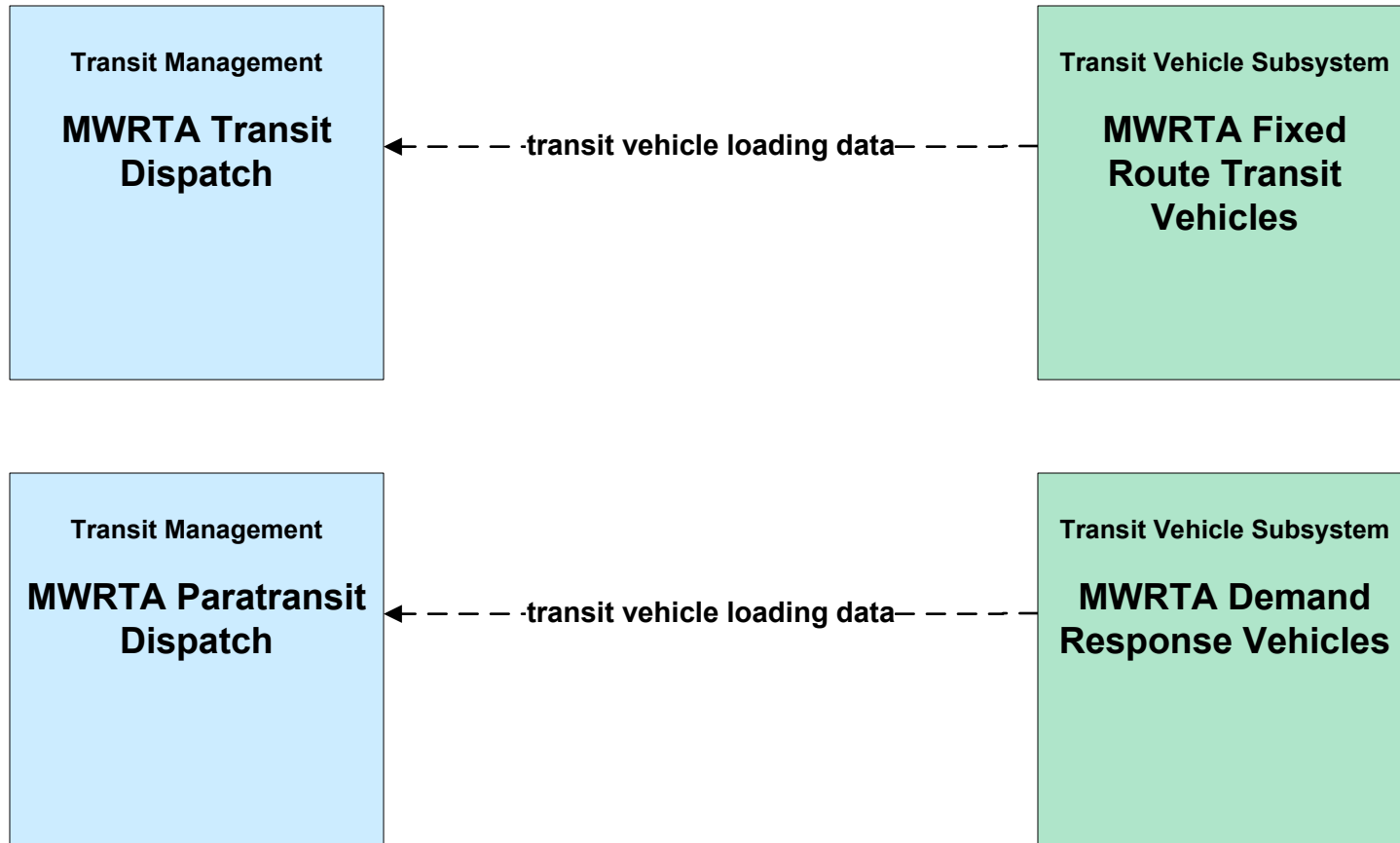
**APTS08 - Transit Traveler Information
MWRTA (2 of 2)**



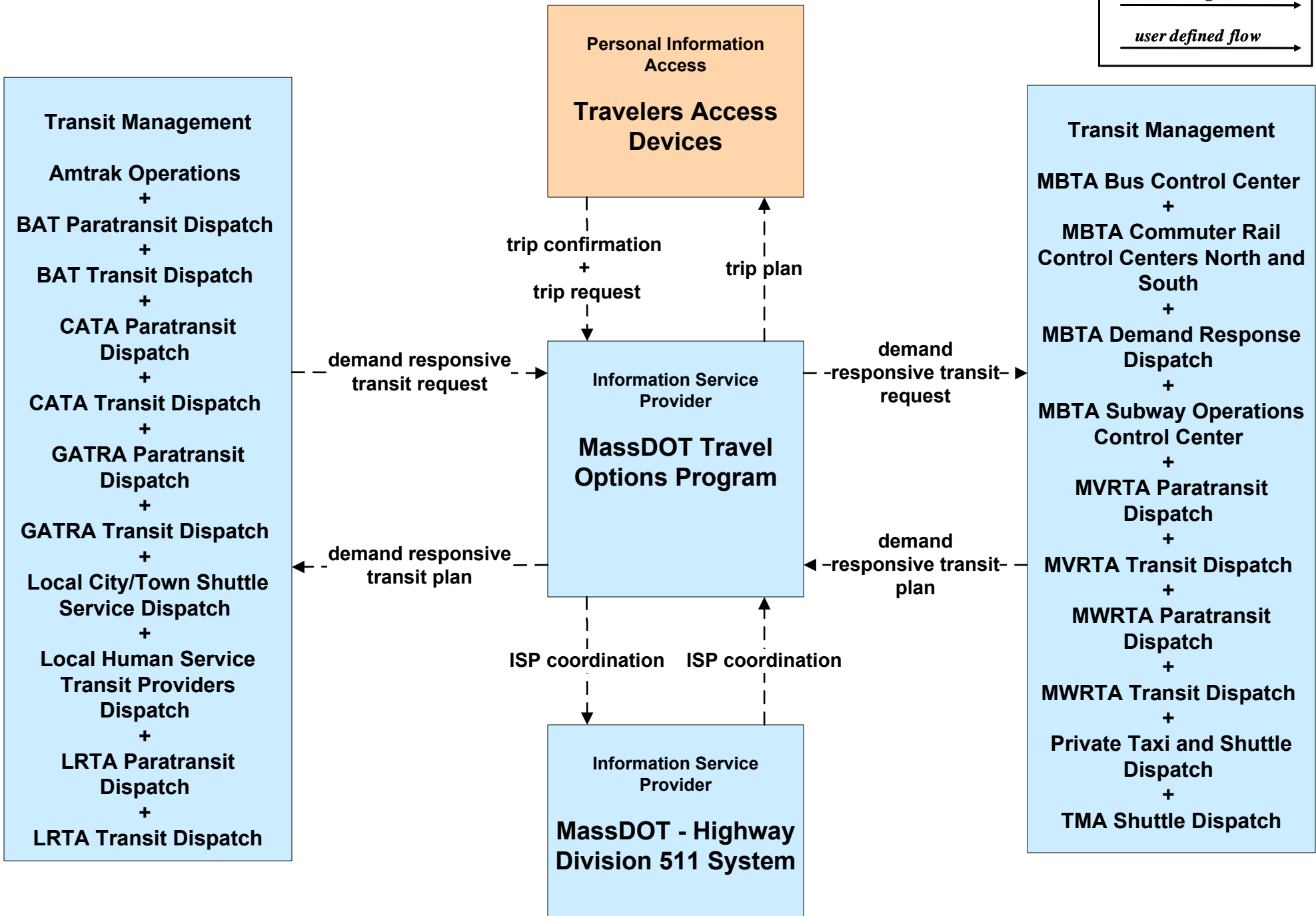
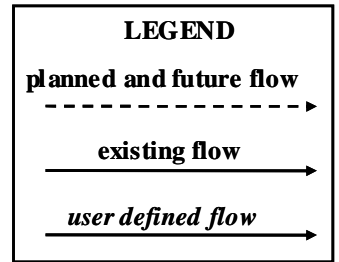
APTS09 - Transit Signal Priority MWRTA



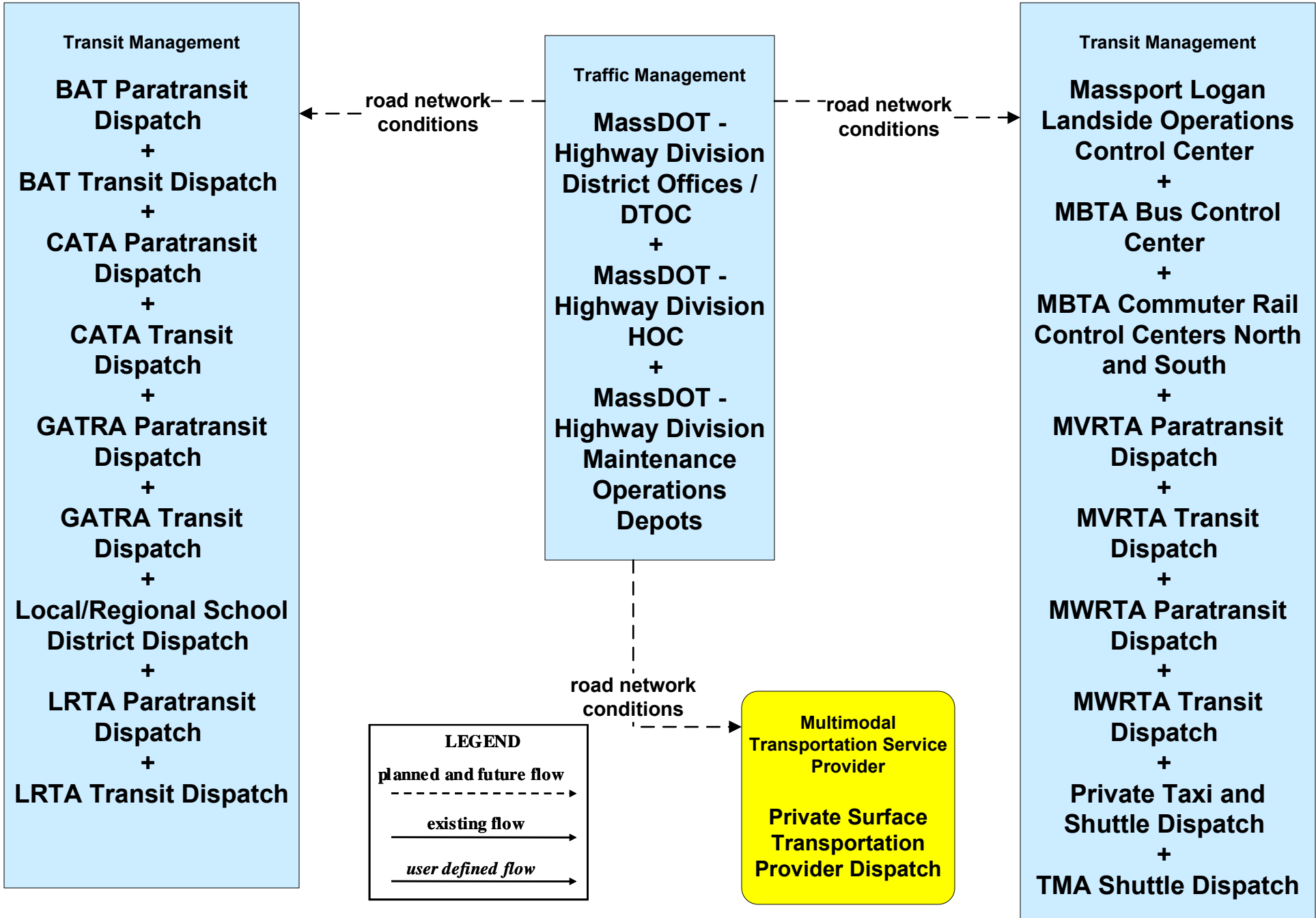
APTS10 - Transit Passenger Counting MWRTA



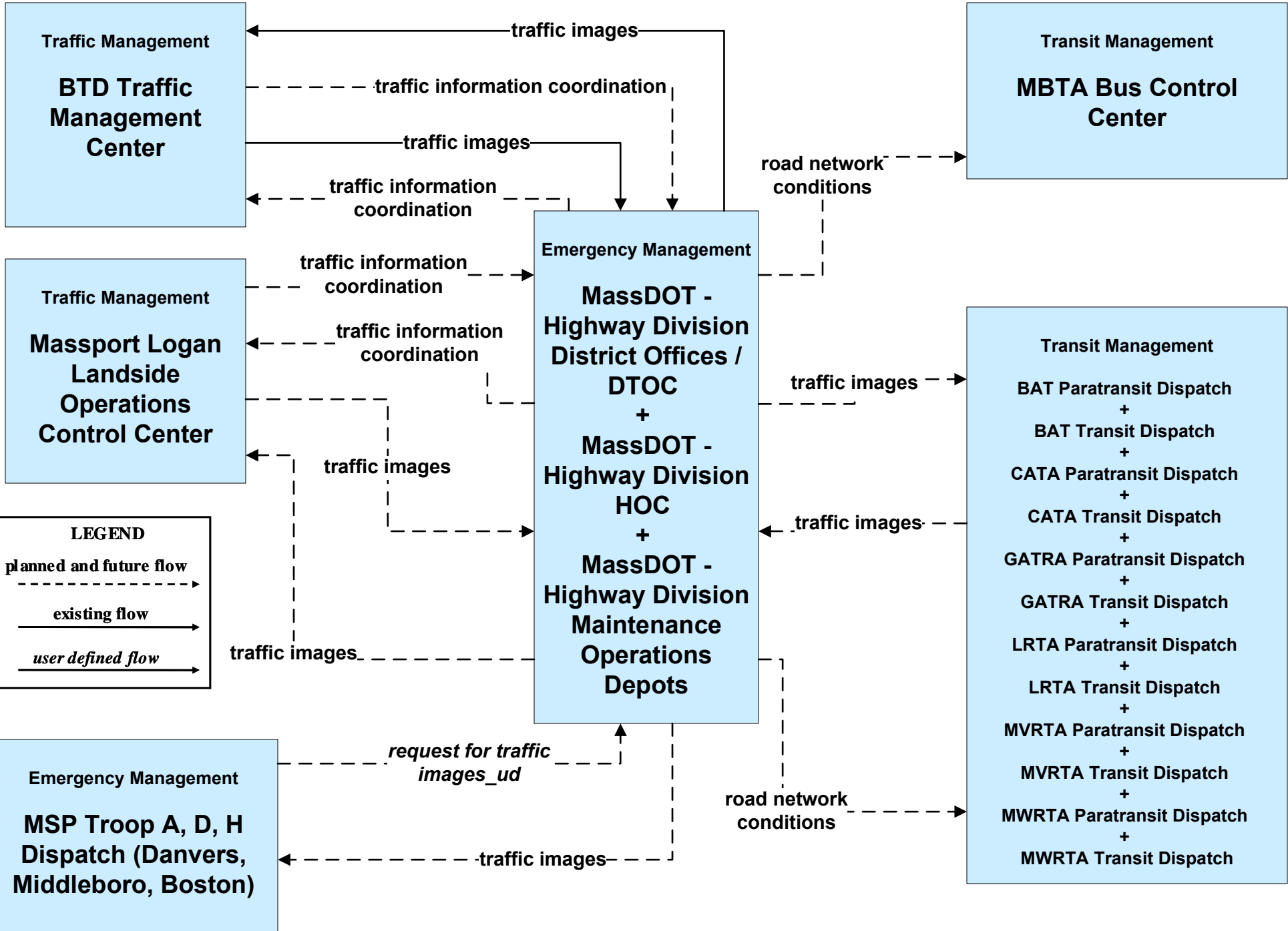
ATIS08 - Dynamic Ridesharing MassDOT Travel Options Program



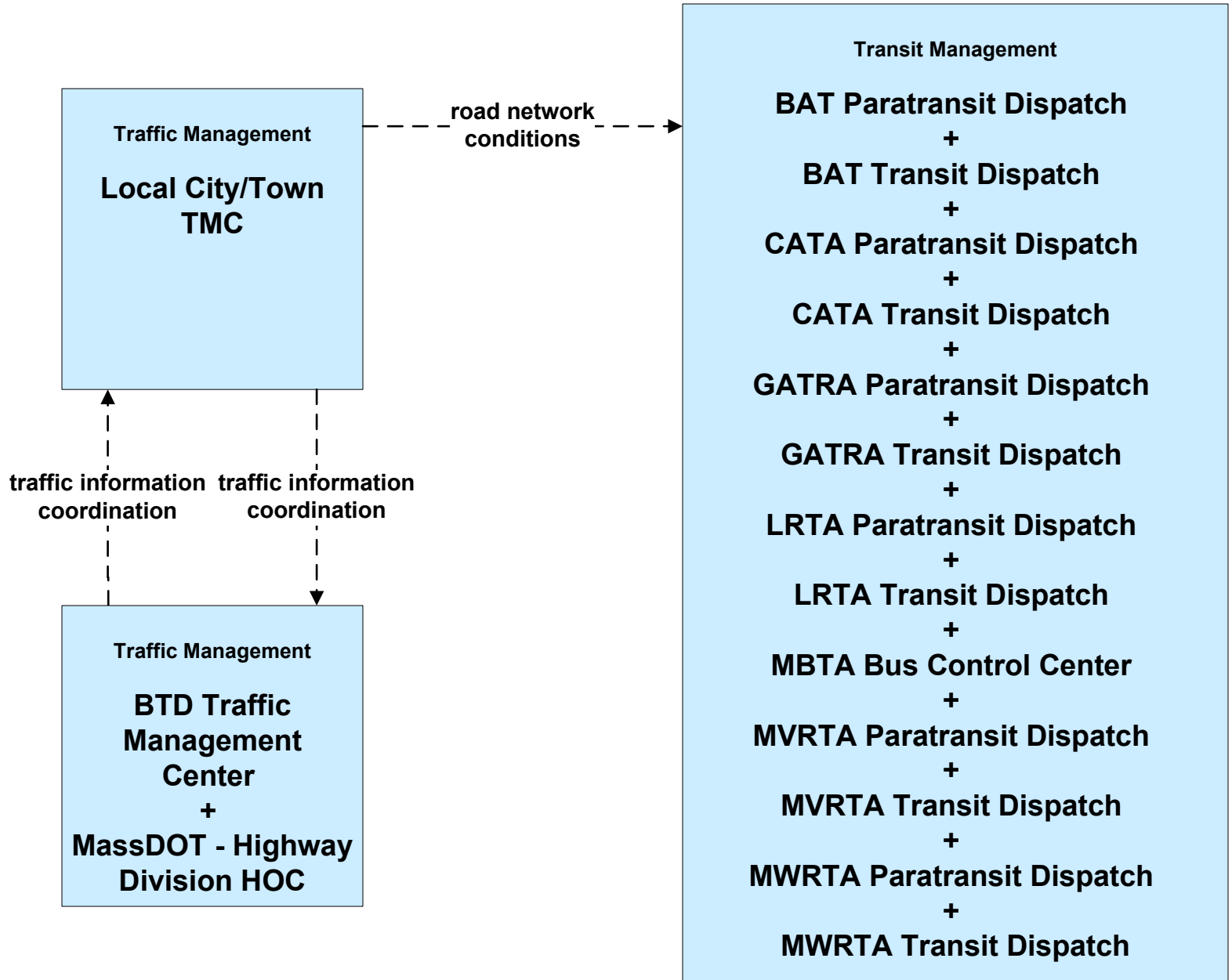
**ATMS06 - Traffic Information Dissemination
MassDOT - Highway Division (2 of 2)**



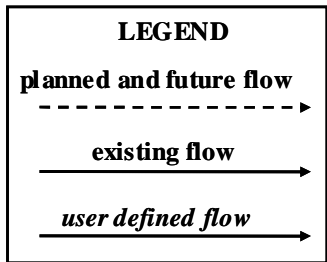
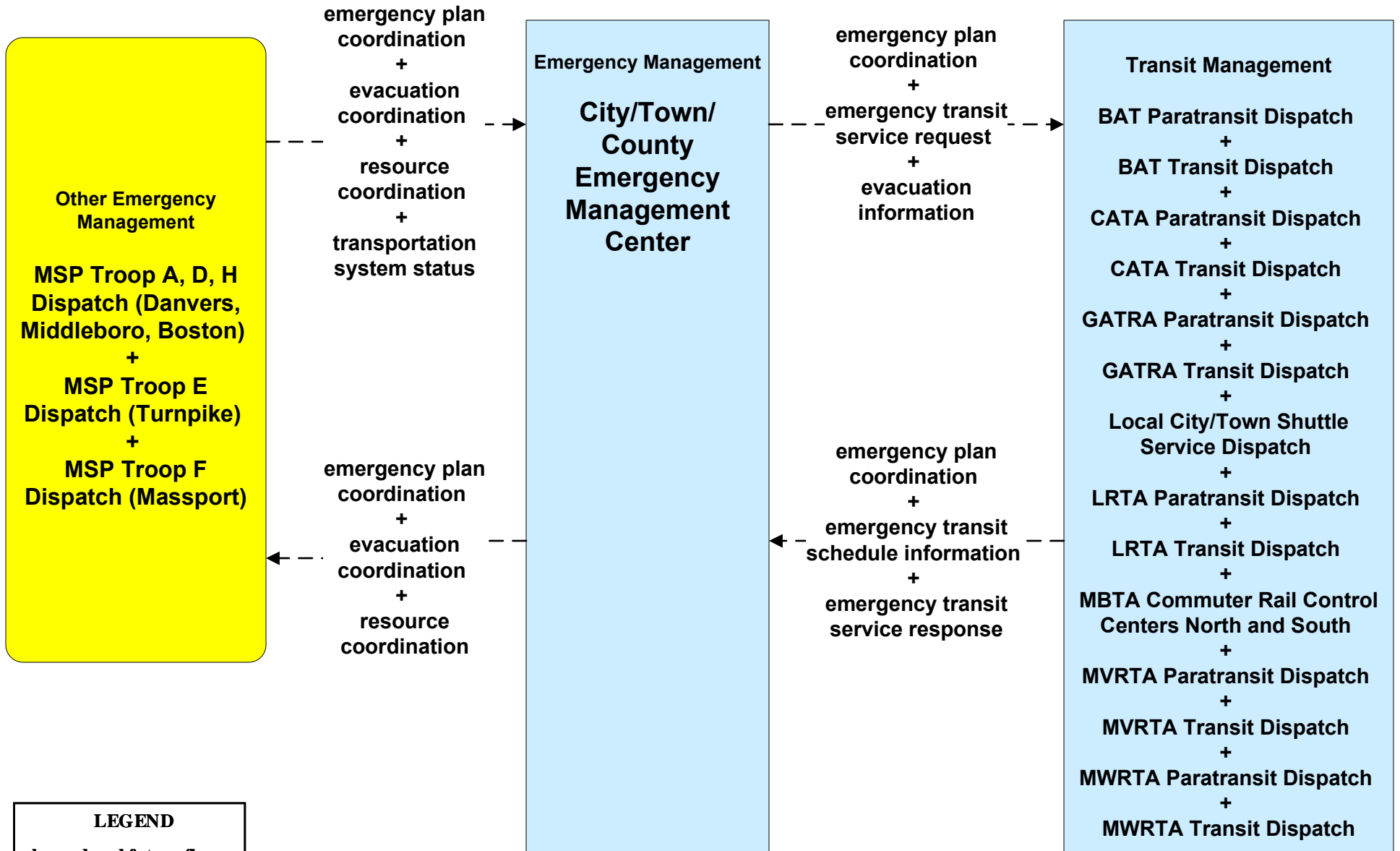
**ATMS07 - Regional Traffic Control
MassDOT - Highway Division (2 of 2)**



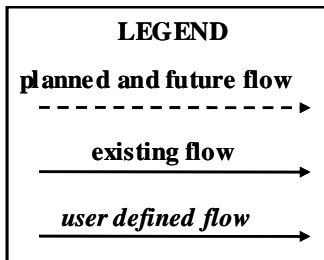
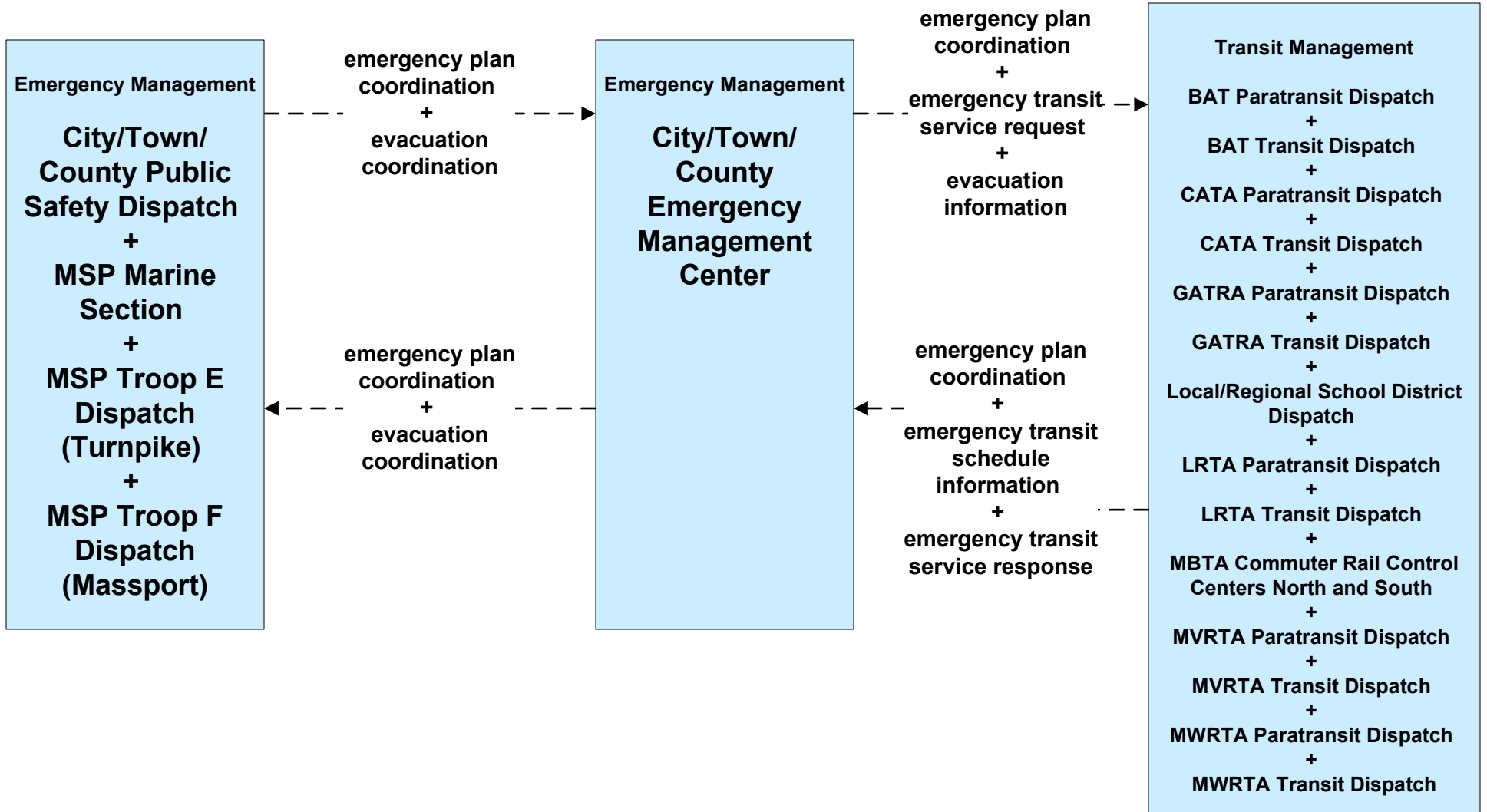
ATMS07 - Regional Traffic Control Local Cities/Towns



EM08 - Disaster Response
City/Town/County Emergency Management Center (2 of 2)



**EM09 - Evacuation and Reentry Management
City/Town/County Emergency Management Center (2 of 2)**



**MC04 - Weather Information Processing and Distribution
Private and National Weather Services (1 of 2)**

