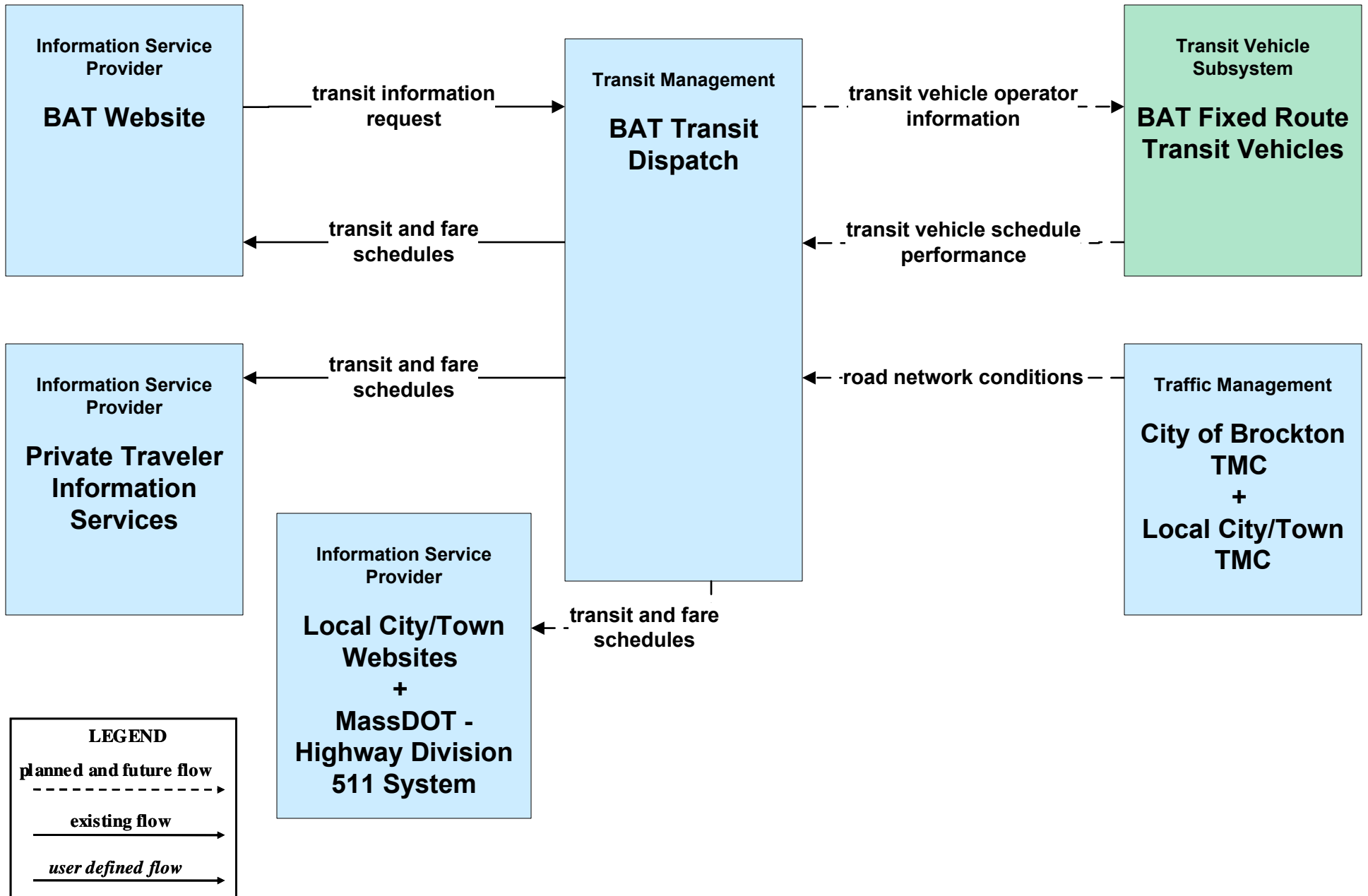
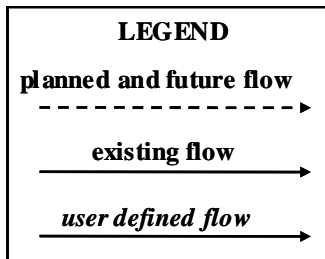
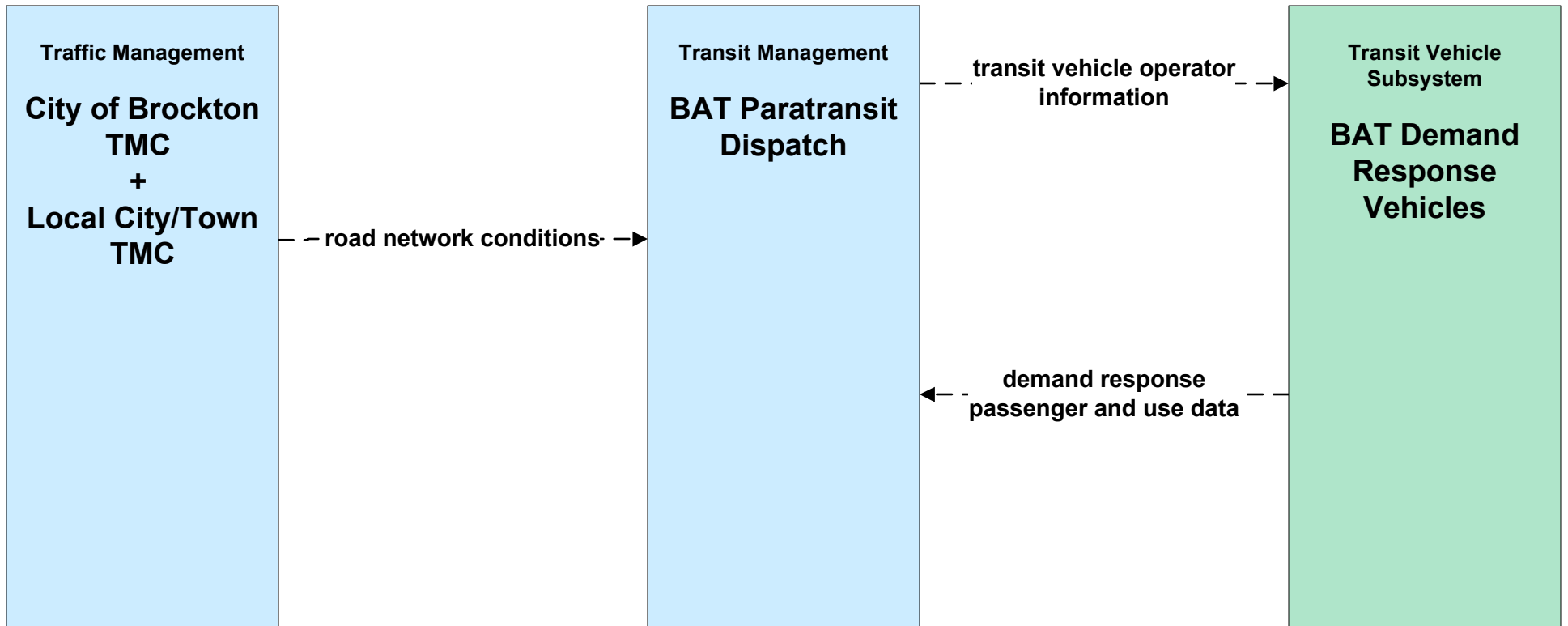


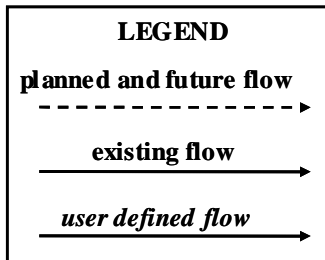
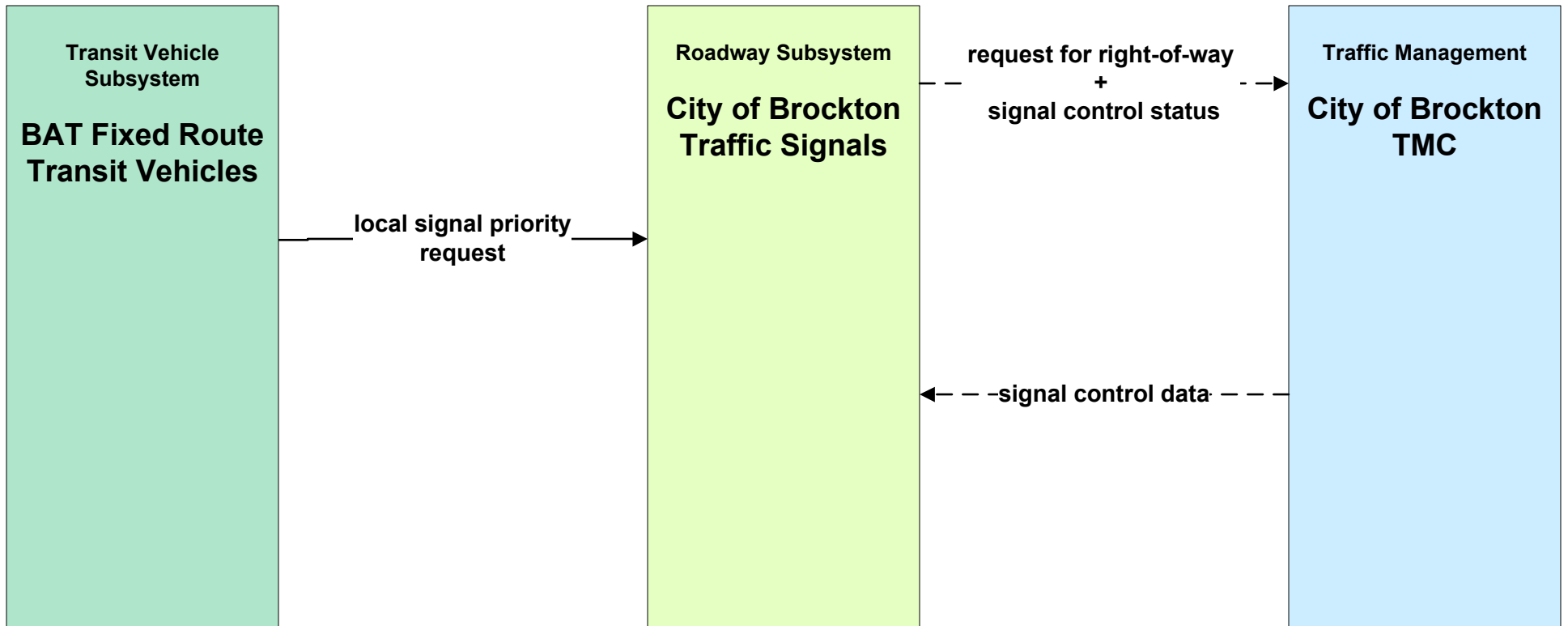
# APTS02 - Transit Fixed-Route Operations BAT



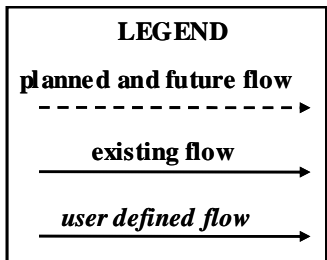
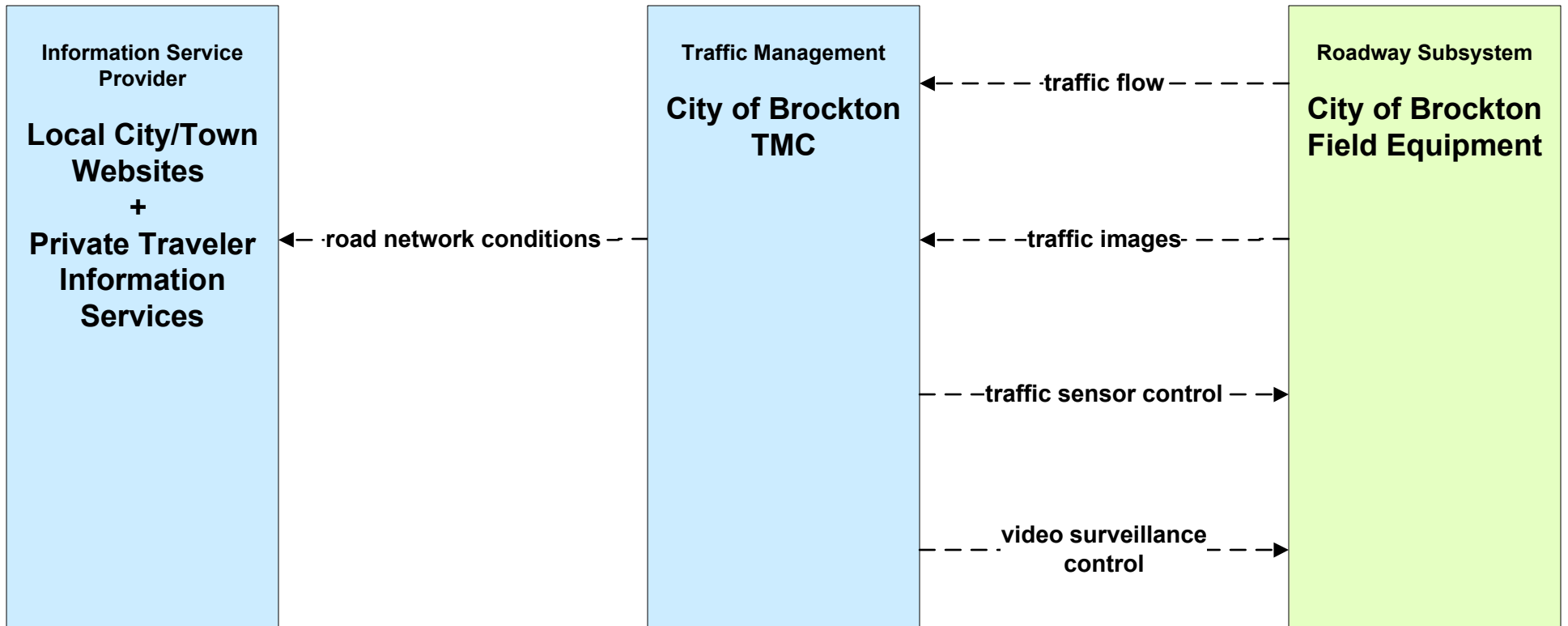
# APTS03 - Demand Response Transit Operations BAT



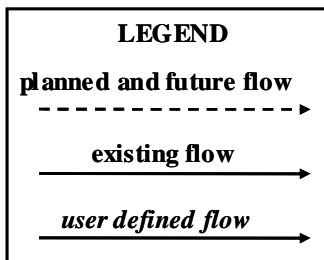
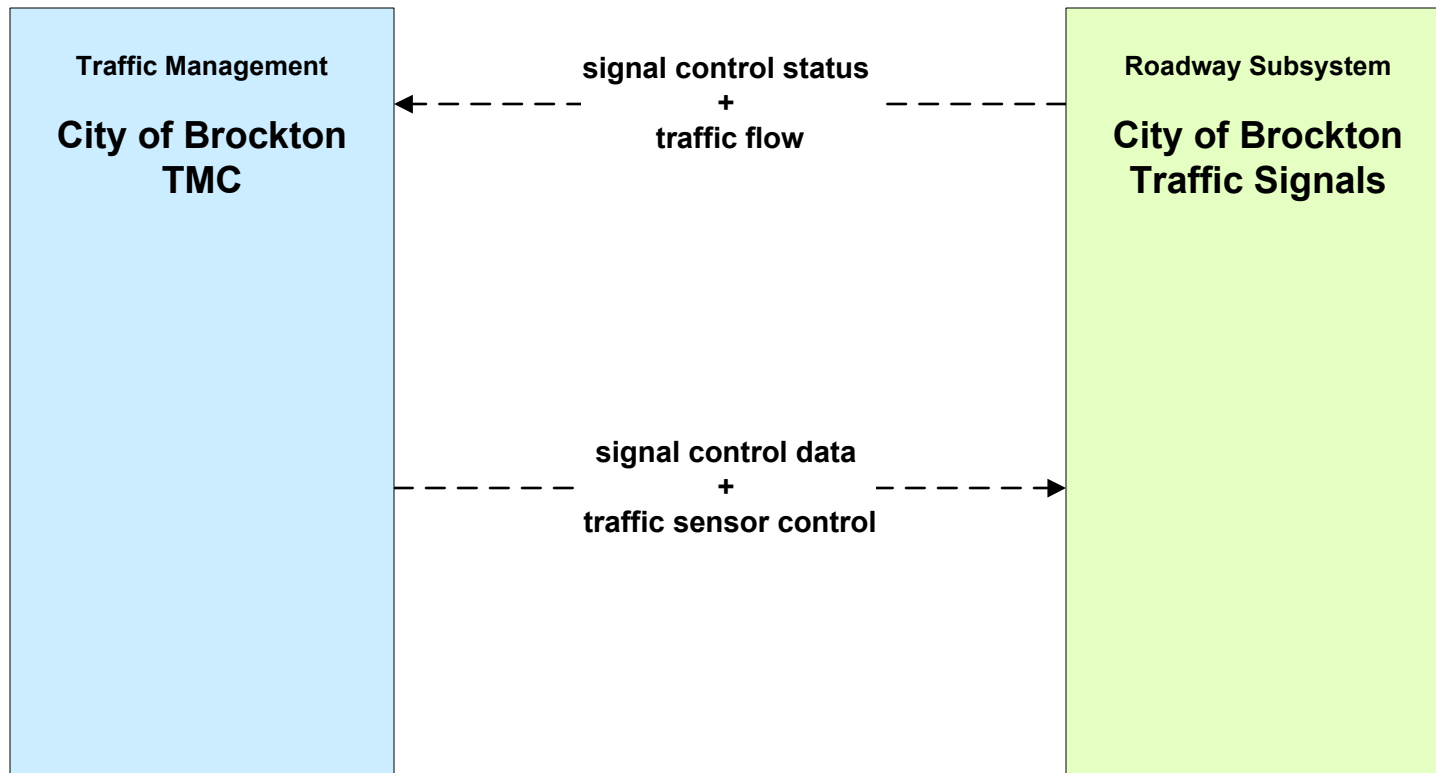
**APTS09 - Transit Signal Priority  
BAT / City of Brockton Transit Priority**



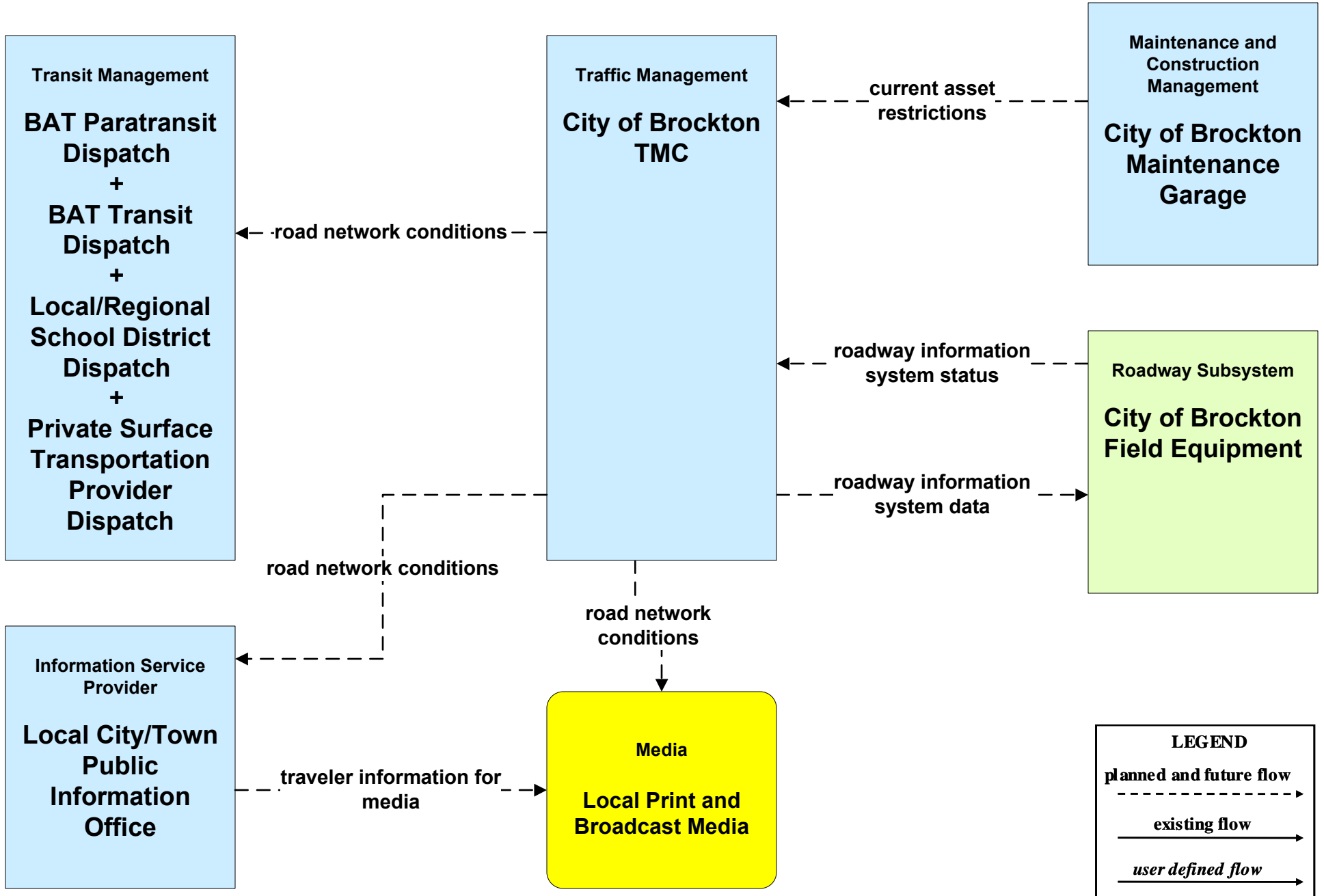
# ATMS01 - Network Surveillance City of Brockton



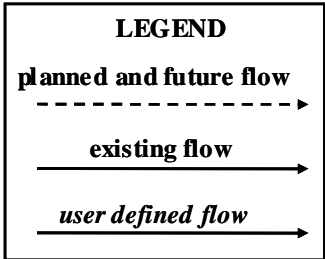
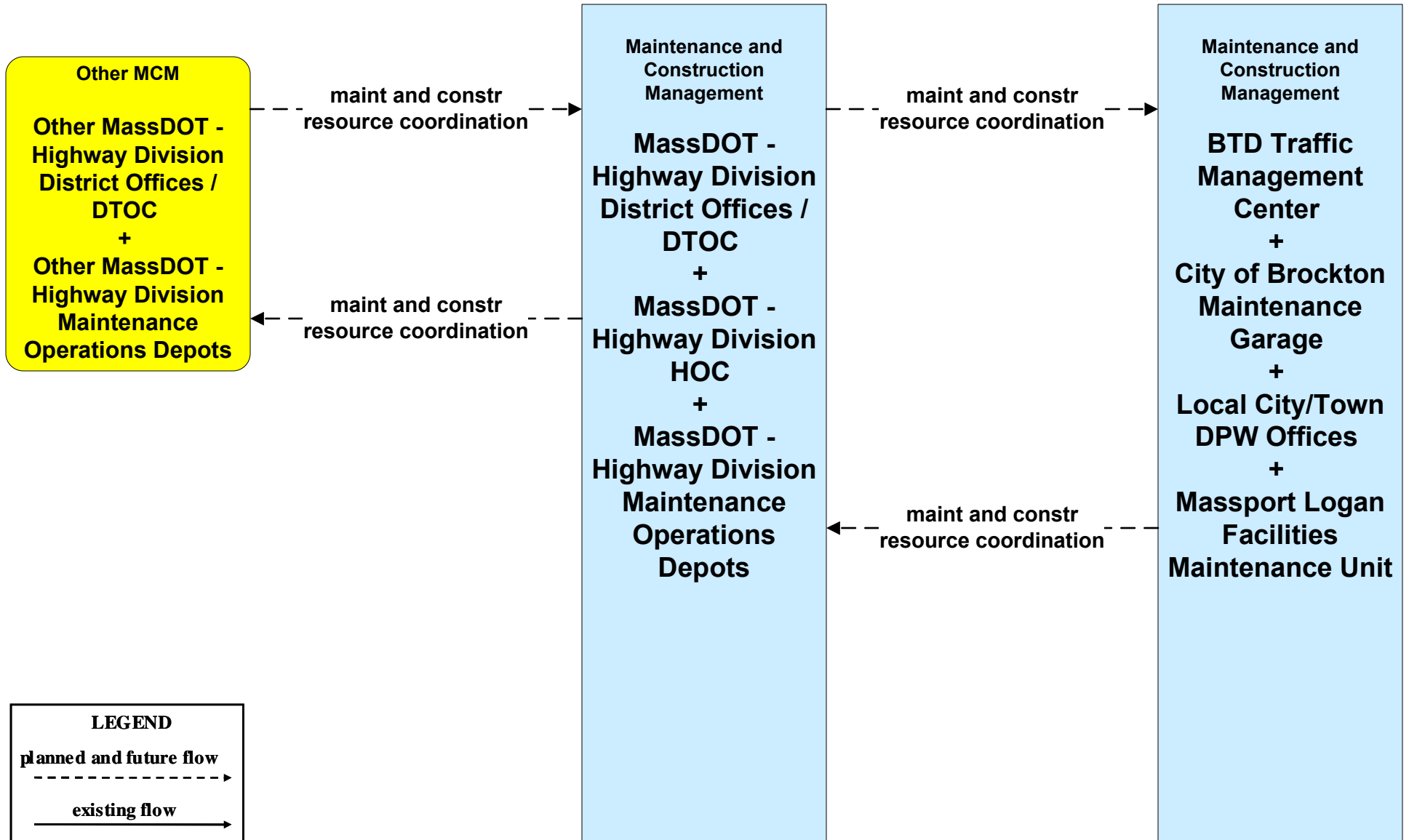
**ATMS03 - Surface Street Control  
City of Brockton**



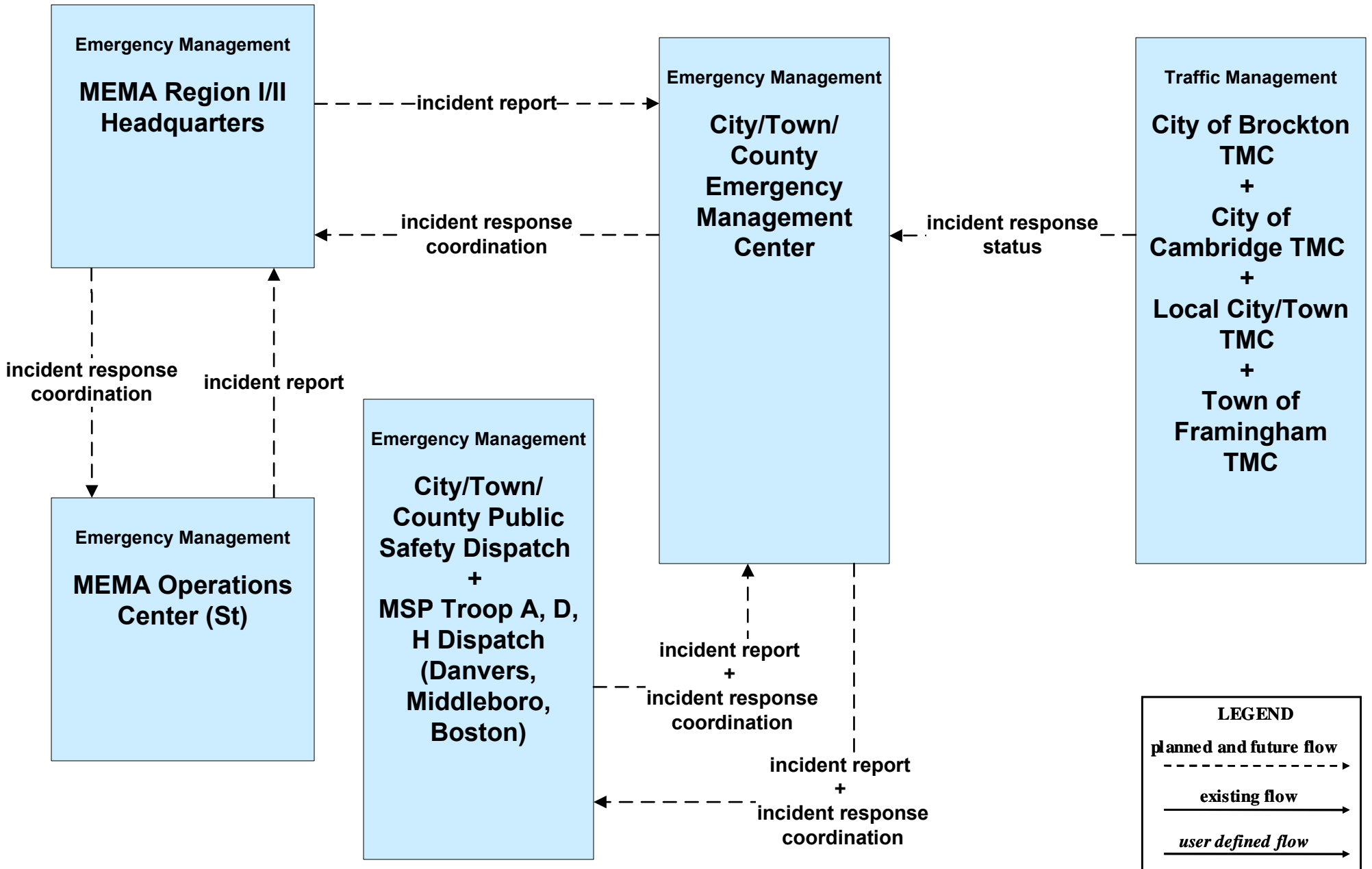
# ATMS06 - Traffic Information Dissemination City of Brockton



**ATMS08 - Incident Management**  
**MassDOT - Highway Division (MCM to Other MCM)**

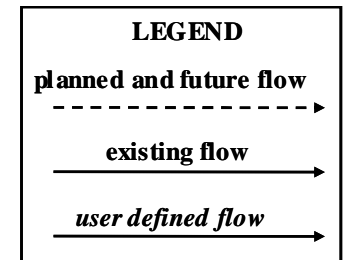
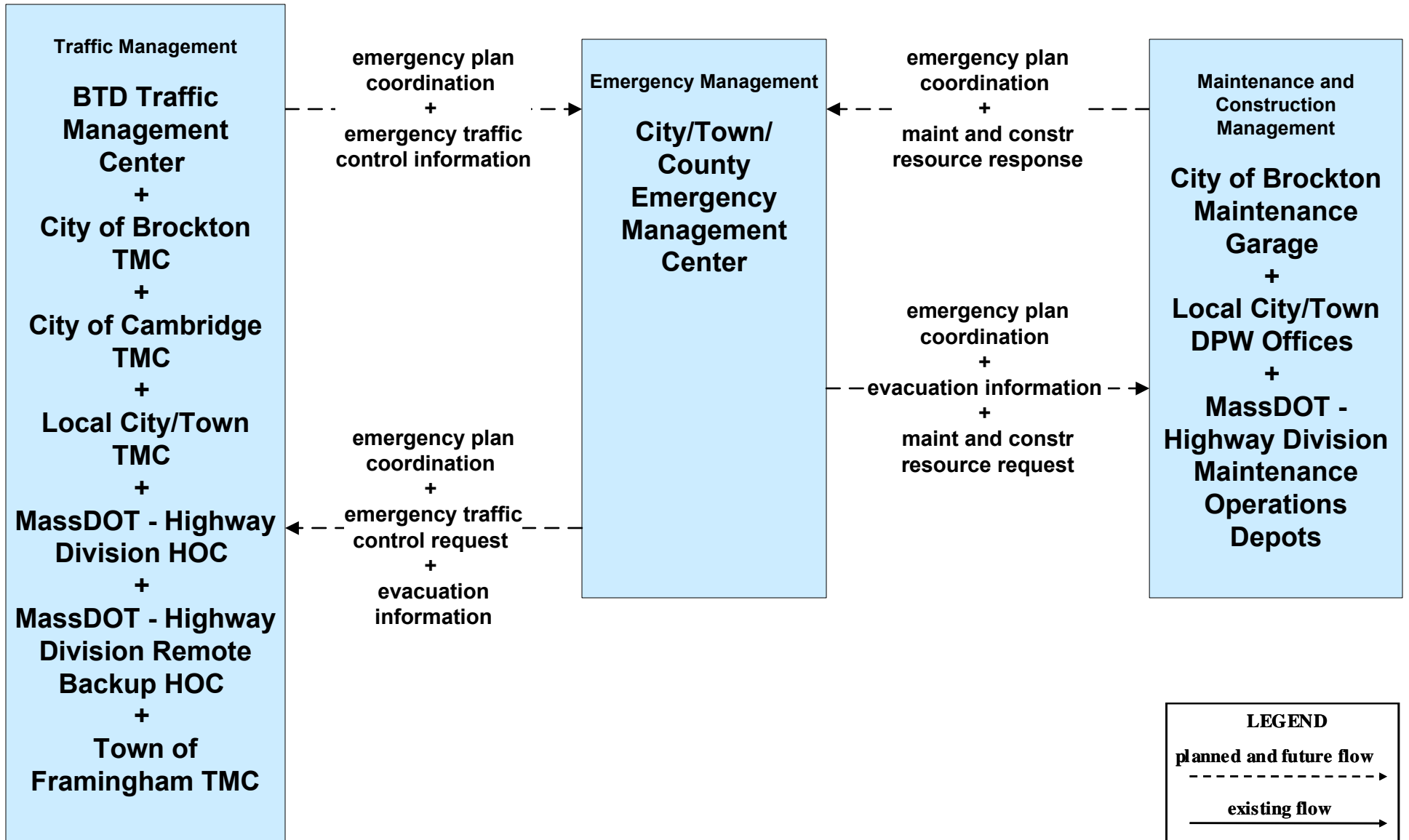


**EM01 - Emergency Response Coordination  
City/Town/County Emergency Management Center**

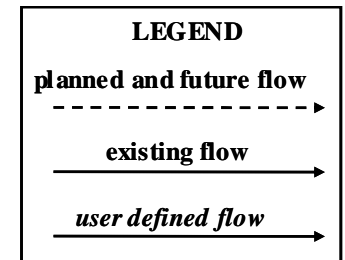
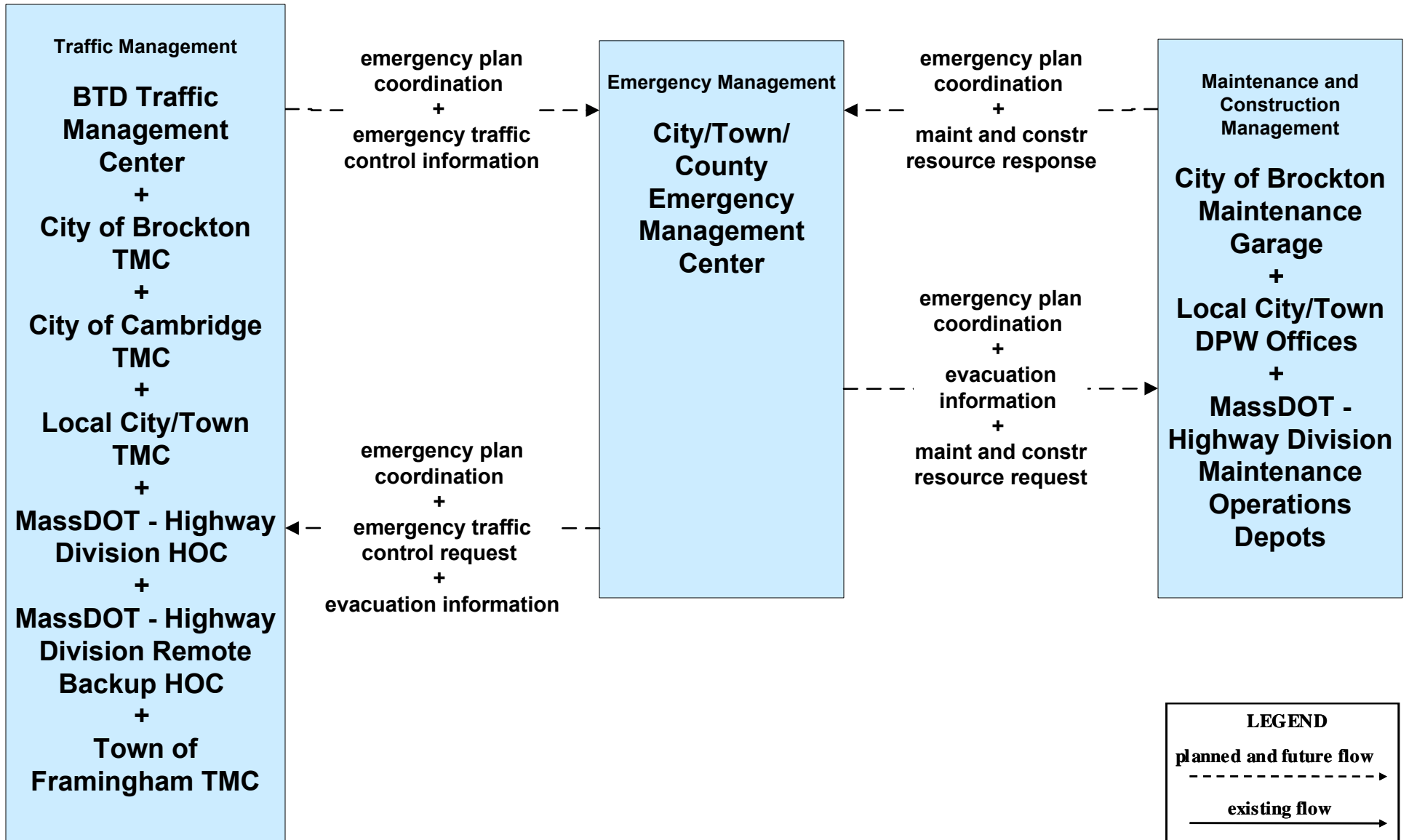




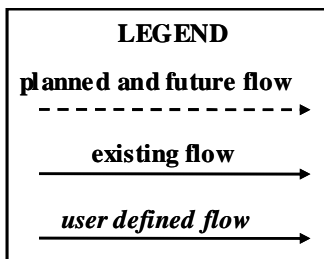
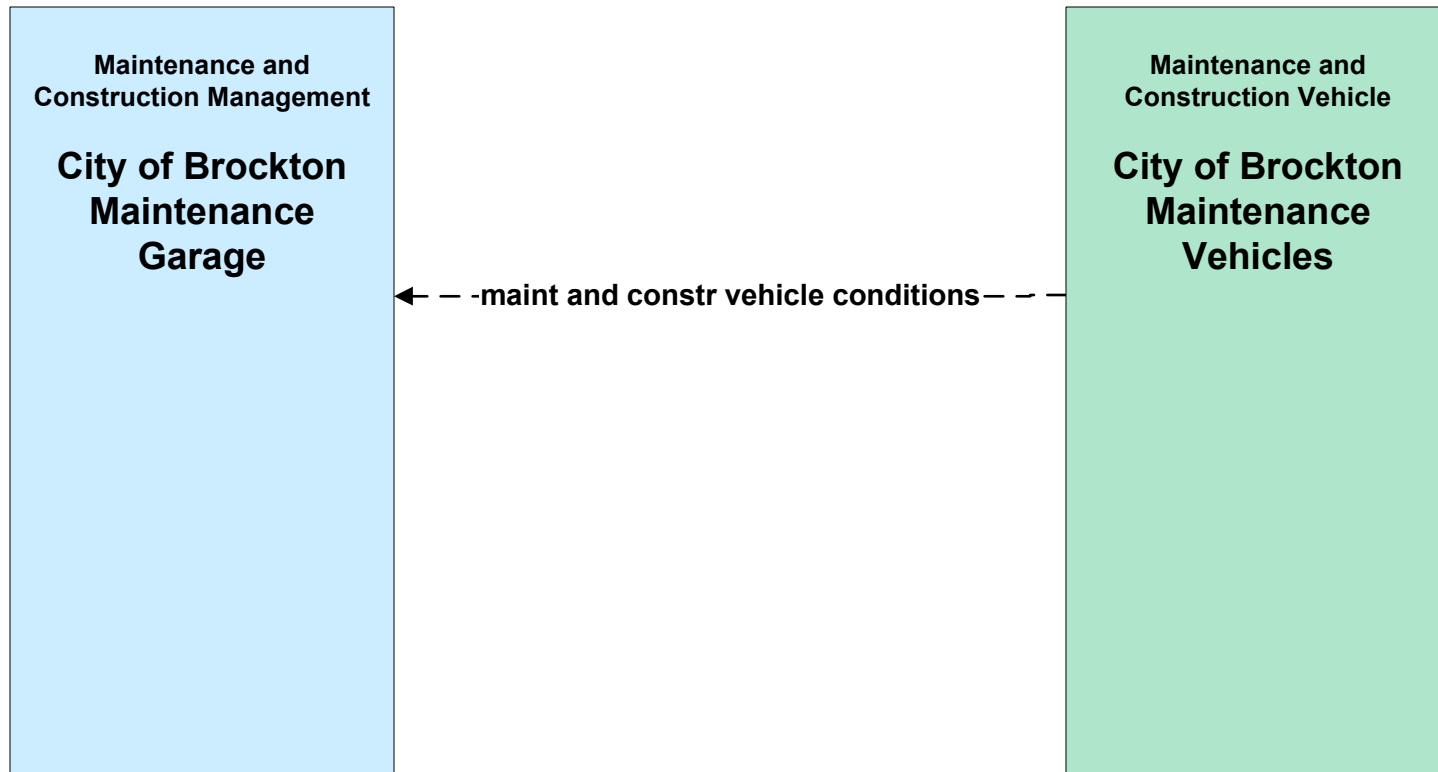
**EM08 - Disaster Response**  
**City/Town/County Emergency Management Center (1 of 2)**



**EM09 - Evacuation and Reentry Management  
City/Town/County Emergency Management Center (1 of 2)**



**MC02 - Maintenance and Construction Vehicle Maintenance  
City of Brockton**



**MC04 - Weather Information Processing and Distribution  
Private and National Weather Services (2 of 2)**

