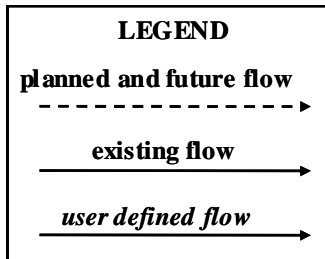
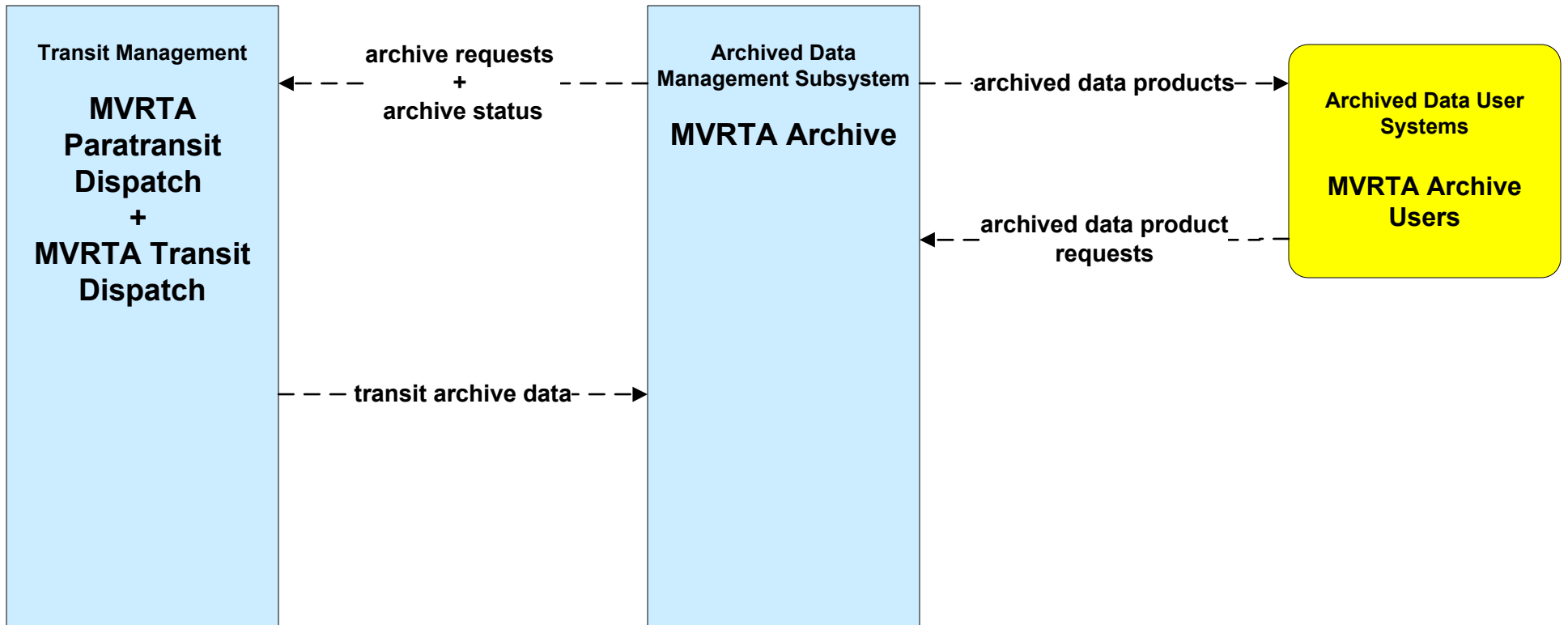
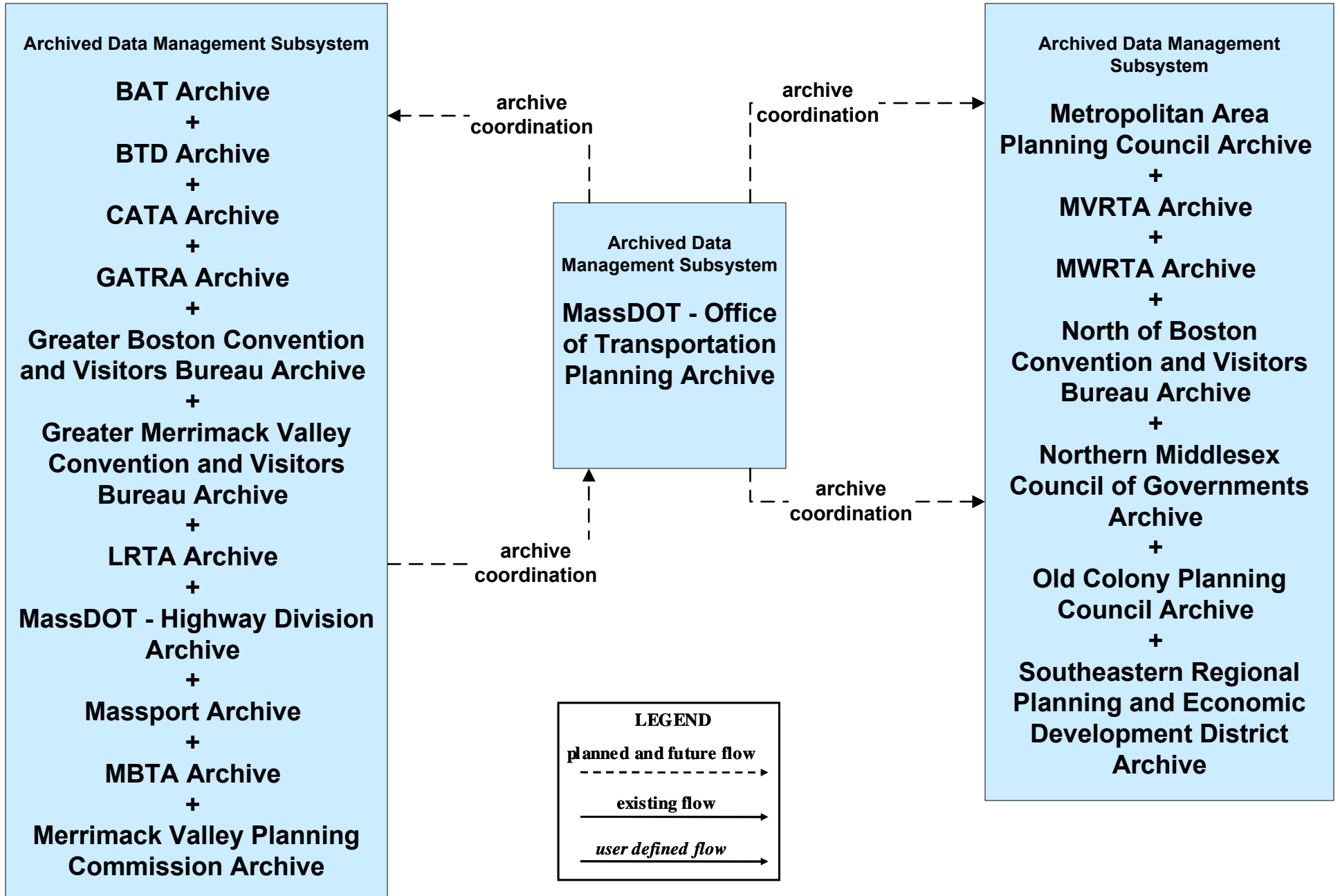


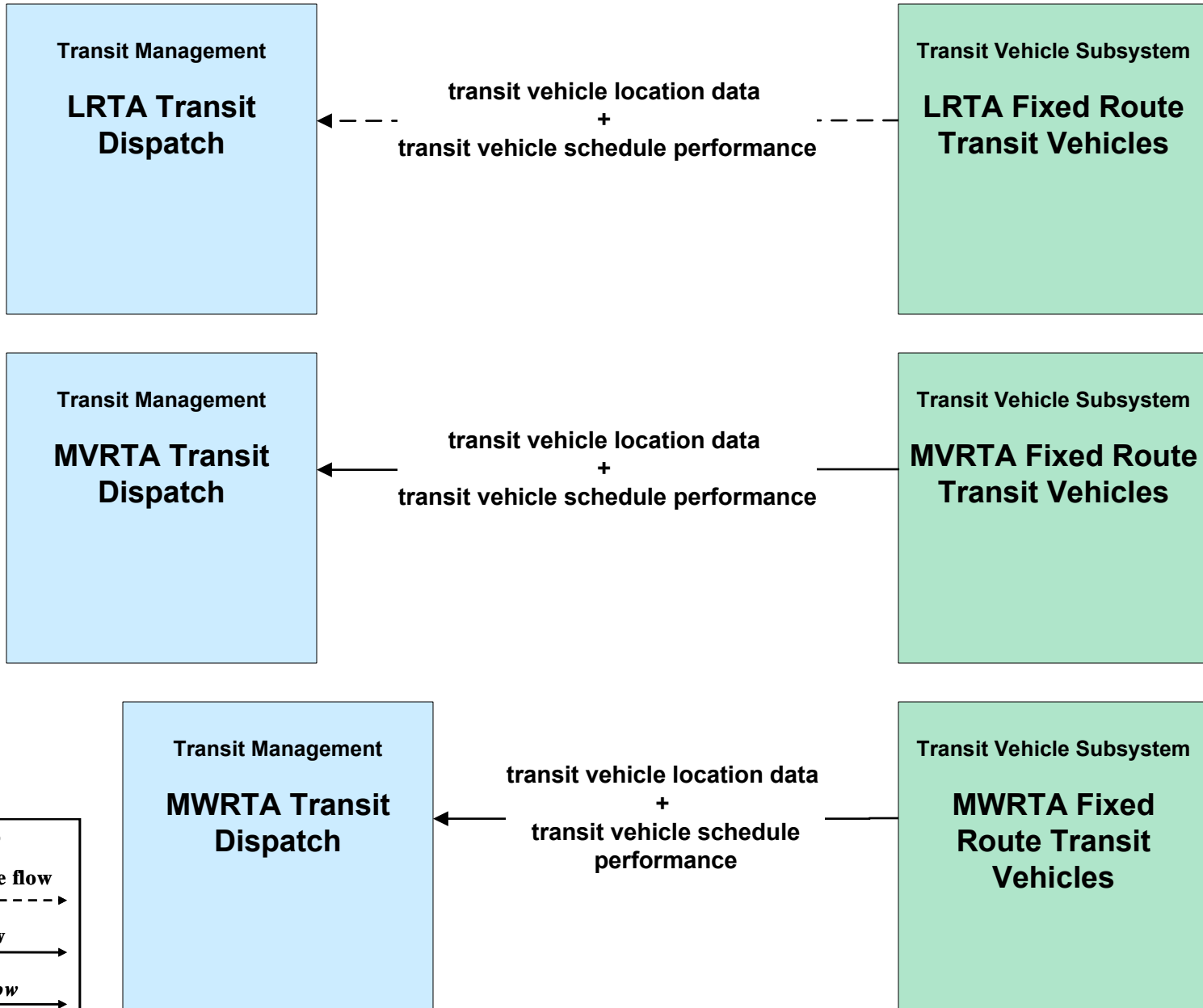
AD1 - ITS Data Mart MVRTA



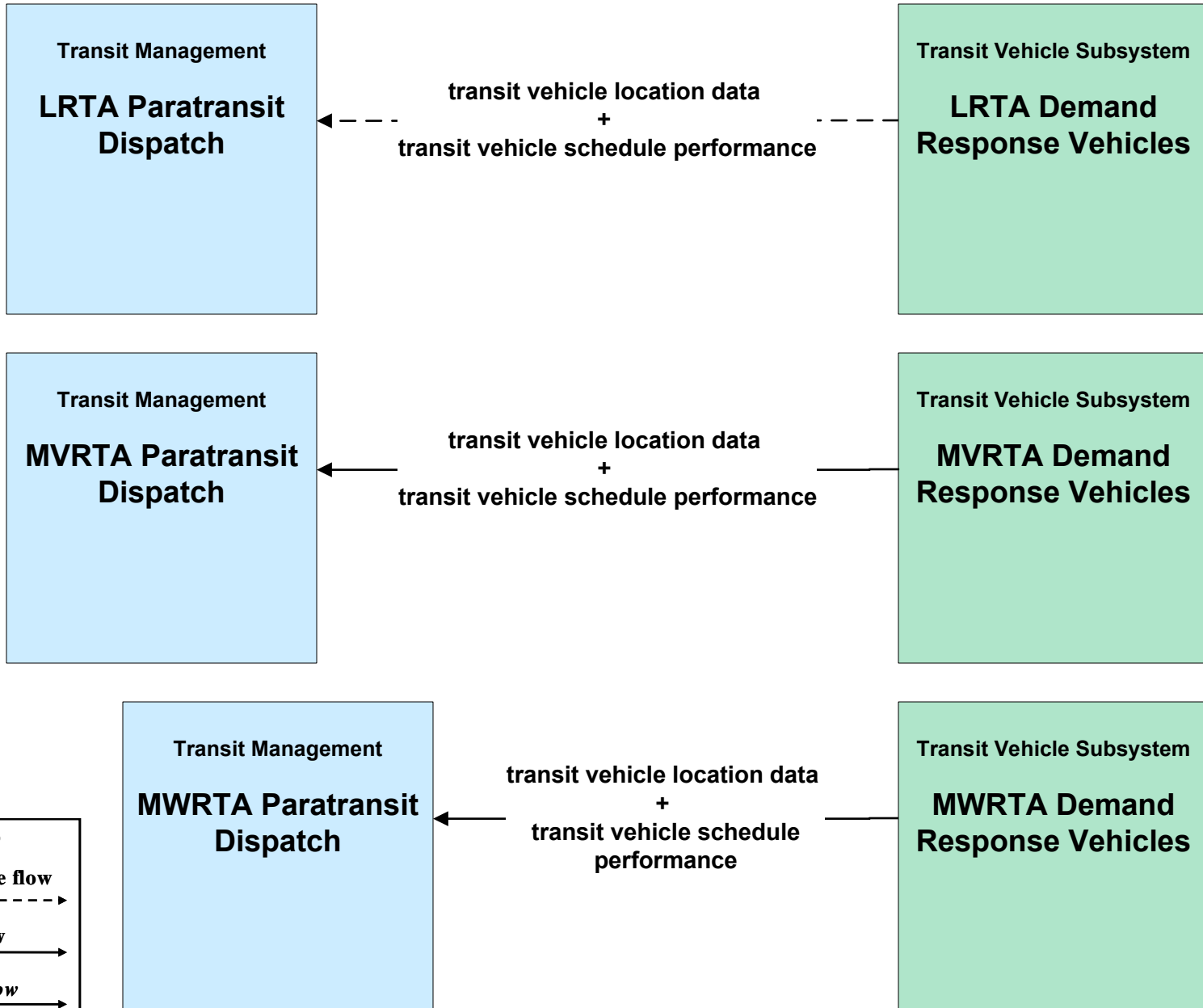
**AD3 - ITS Virtual Data Warehouse
MassDOT - Office of Transportation Planning**



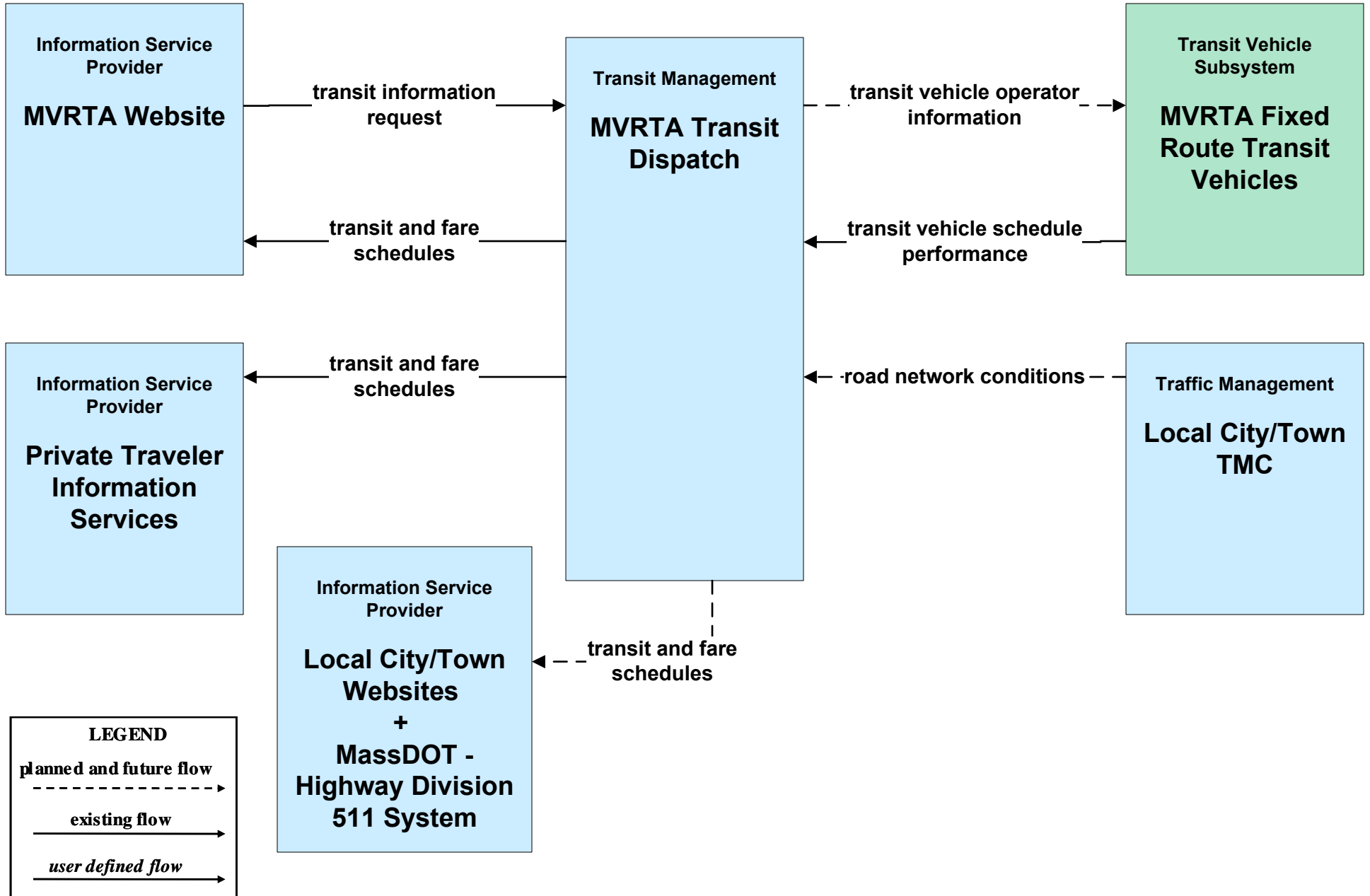
**APTS01 - Transit Vehicle Tracking
RTA (2 of 2)**



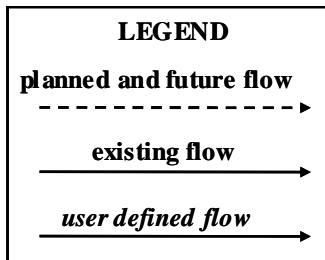
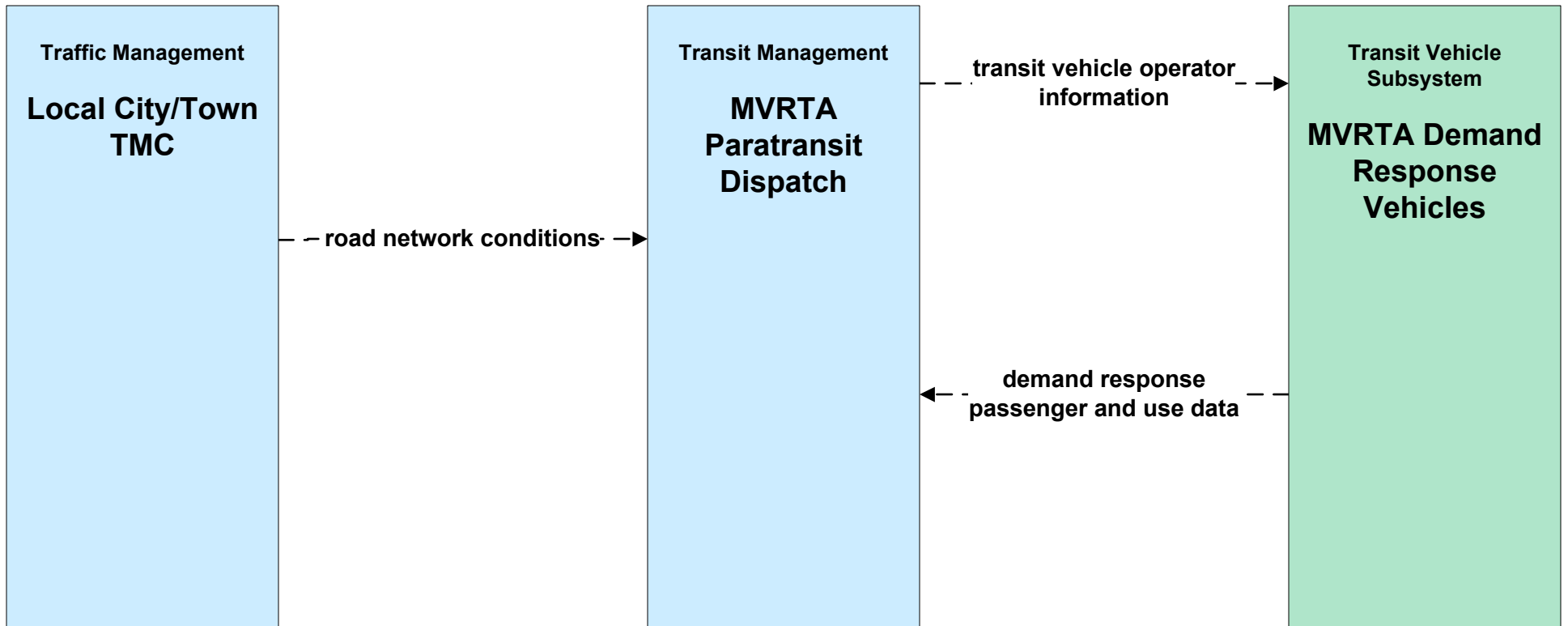
**APTS01 - Transit Vehicle Tracking
RTA Paratransit (2 of 2)**



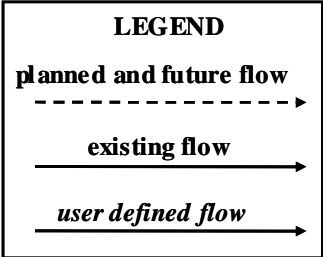
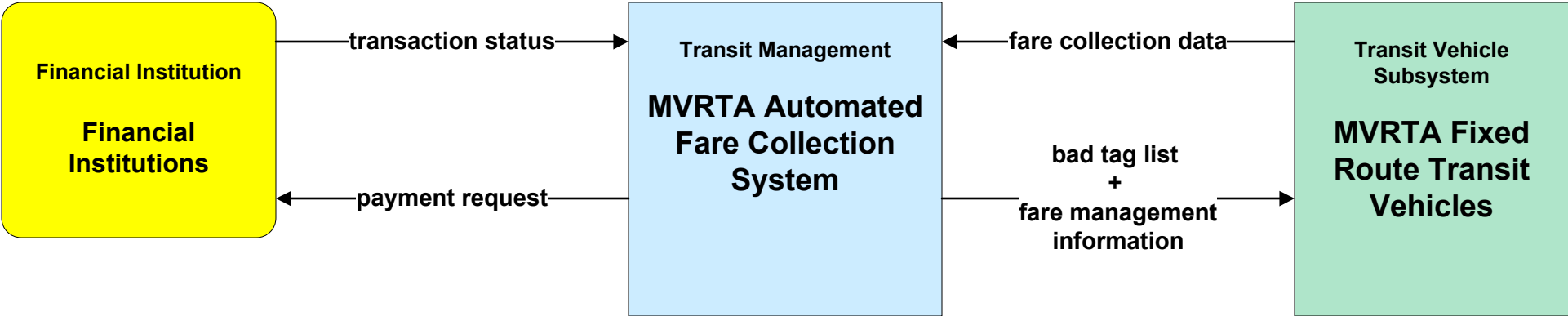
APTS02 - Transit Fixed-Route Operations MVRTA



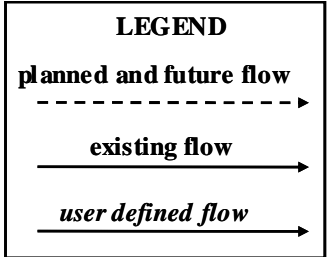
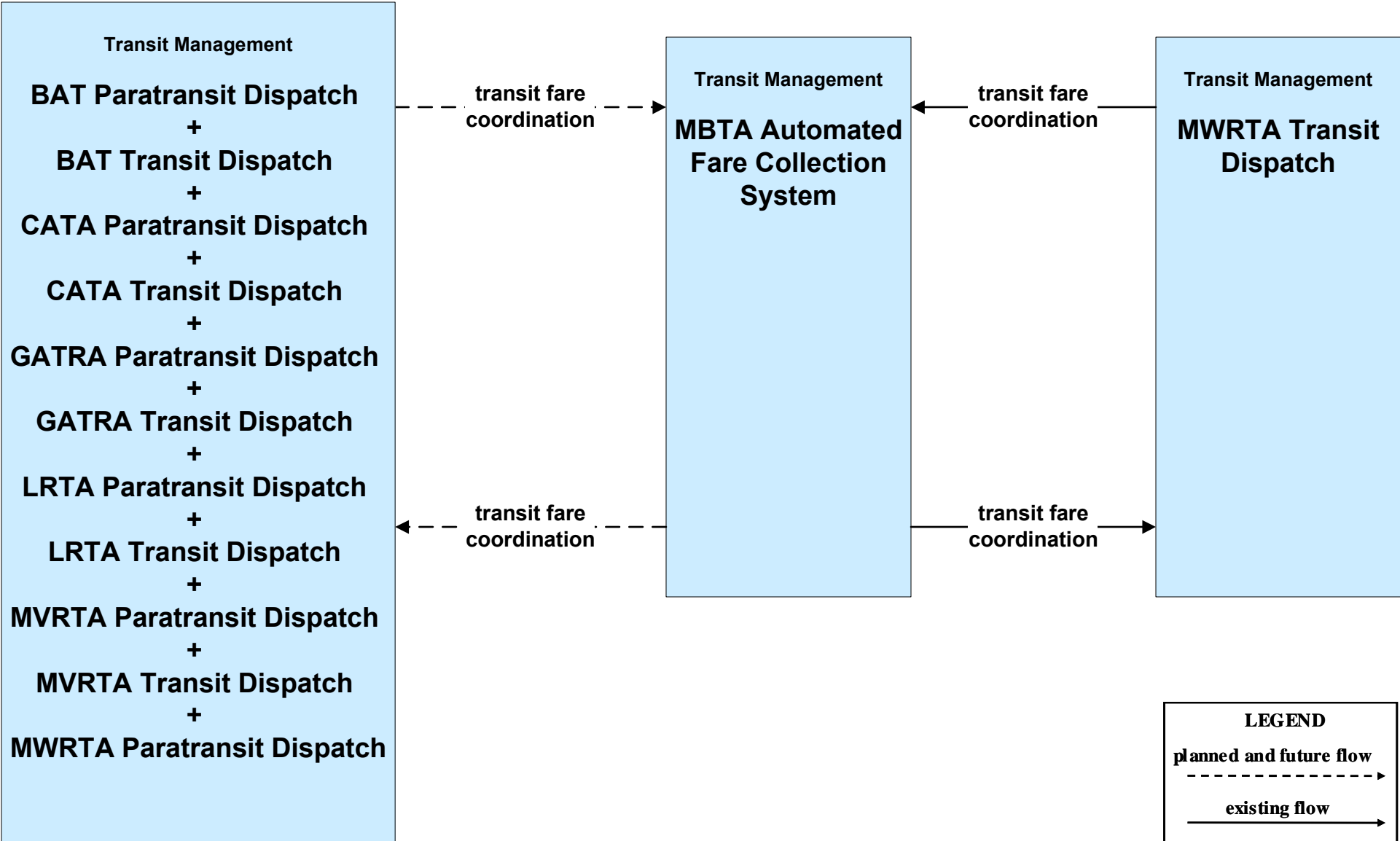
APTS03 - Demand Response Transit Operations MVRTA



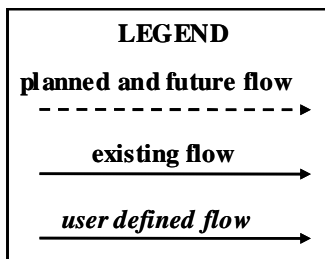
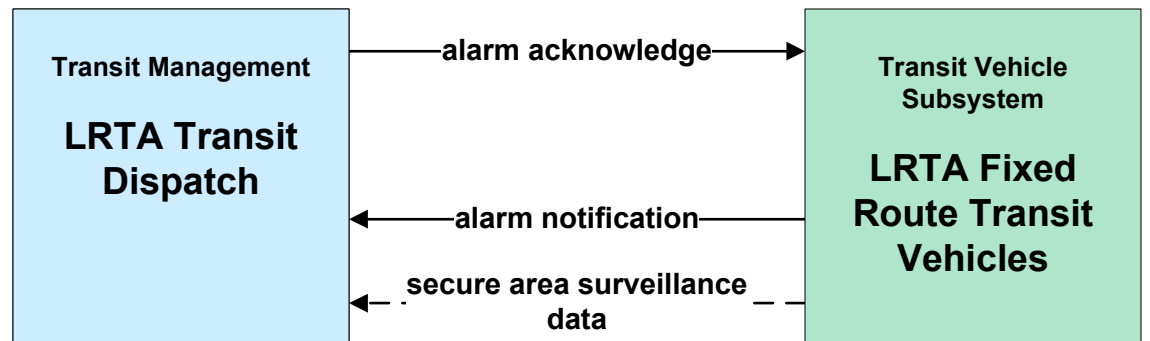
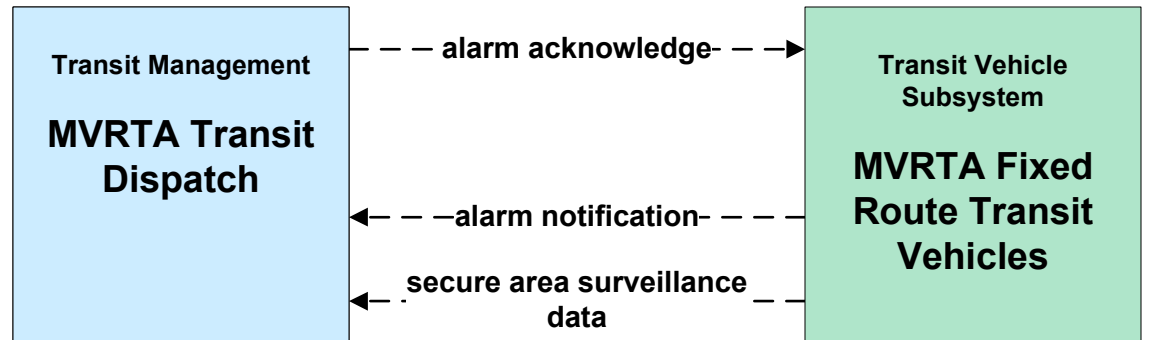
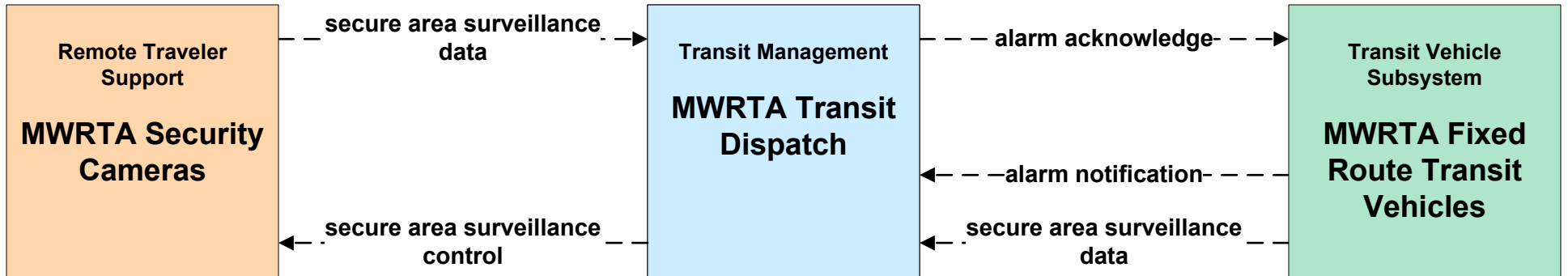
**APTS04 - Transit Passenger and Fare Payment
MVRTA**



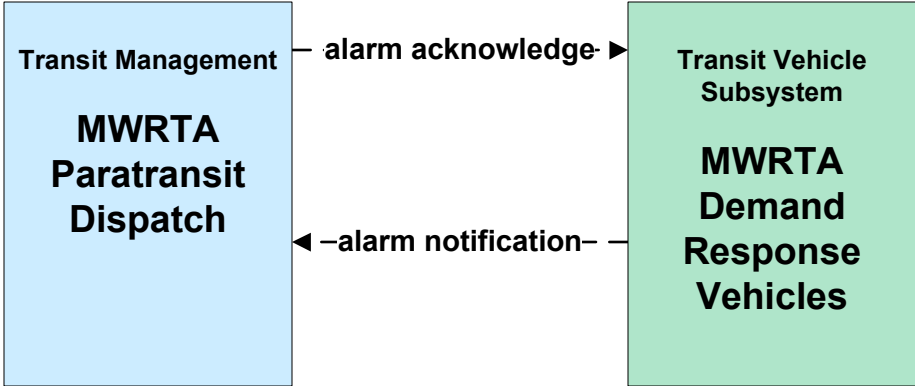
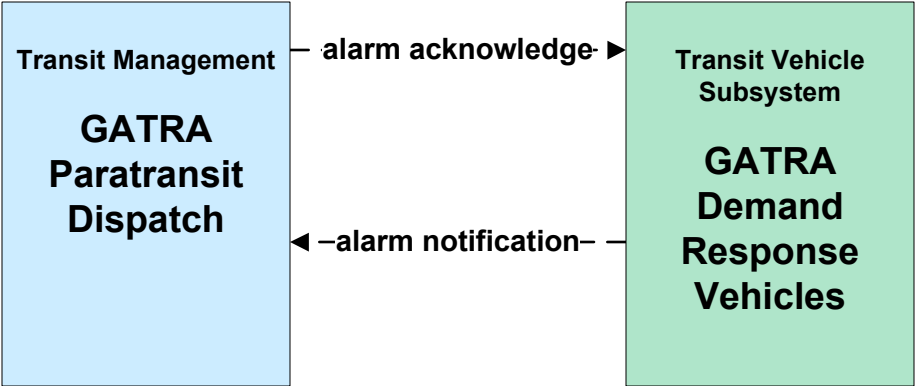
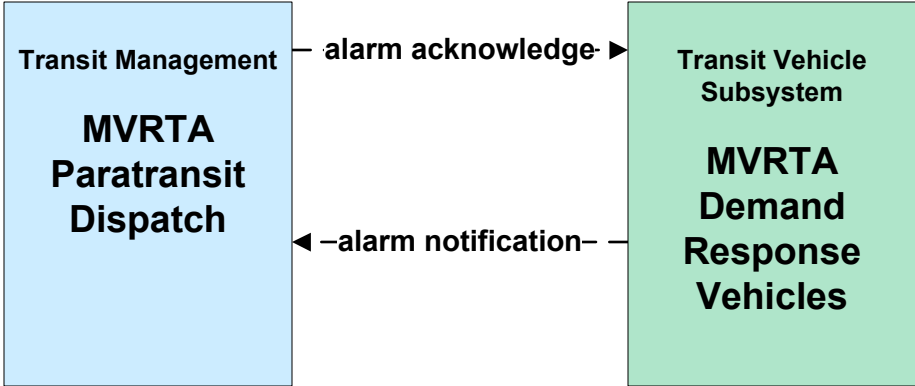
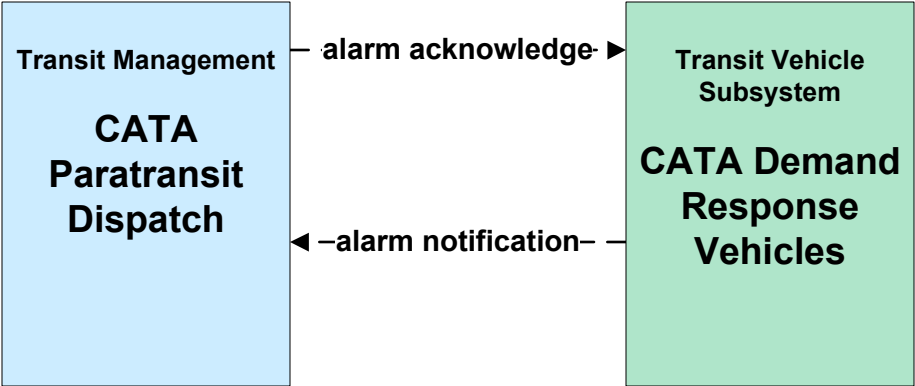
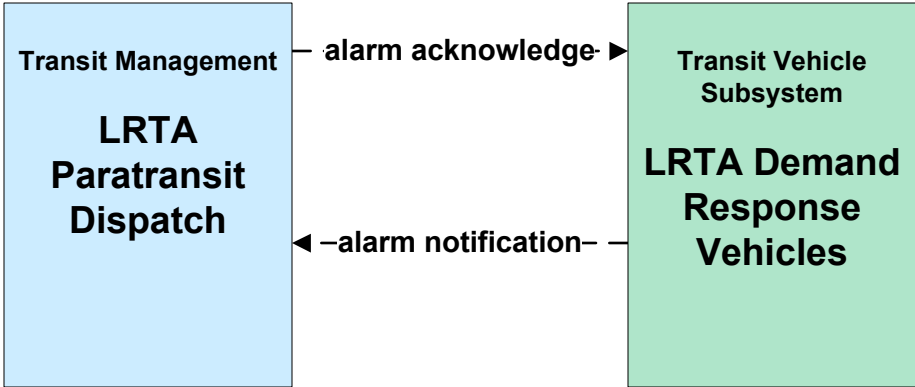
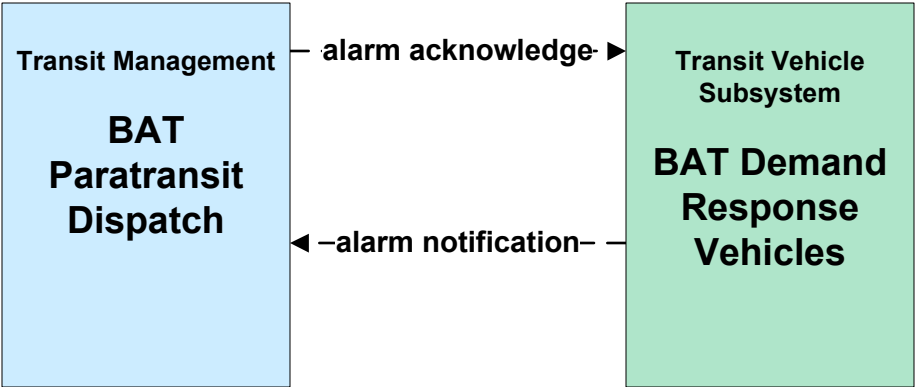
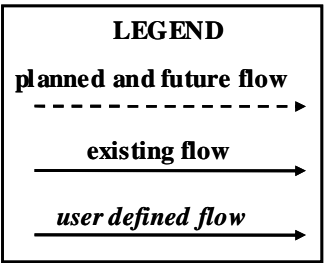
**APTS04 - Transit Passenger and Fare Payment
MBTA**



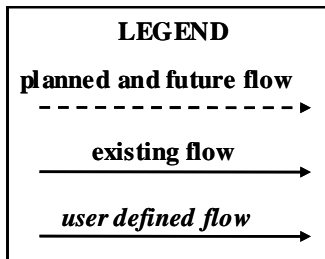
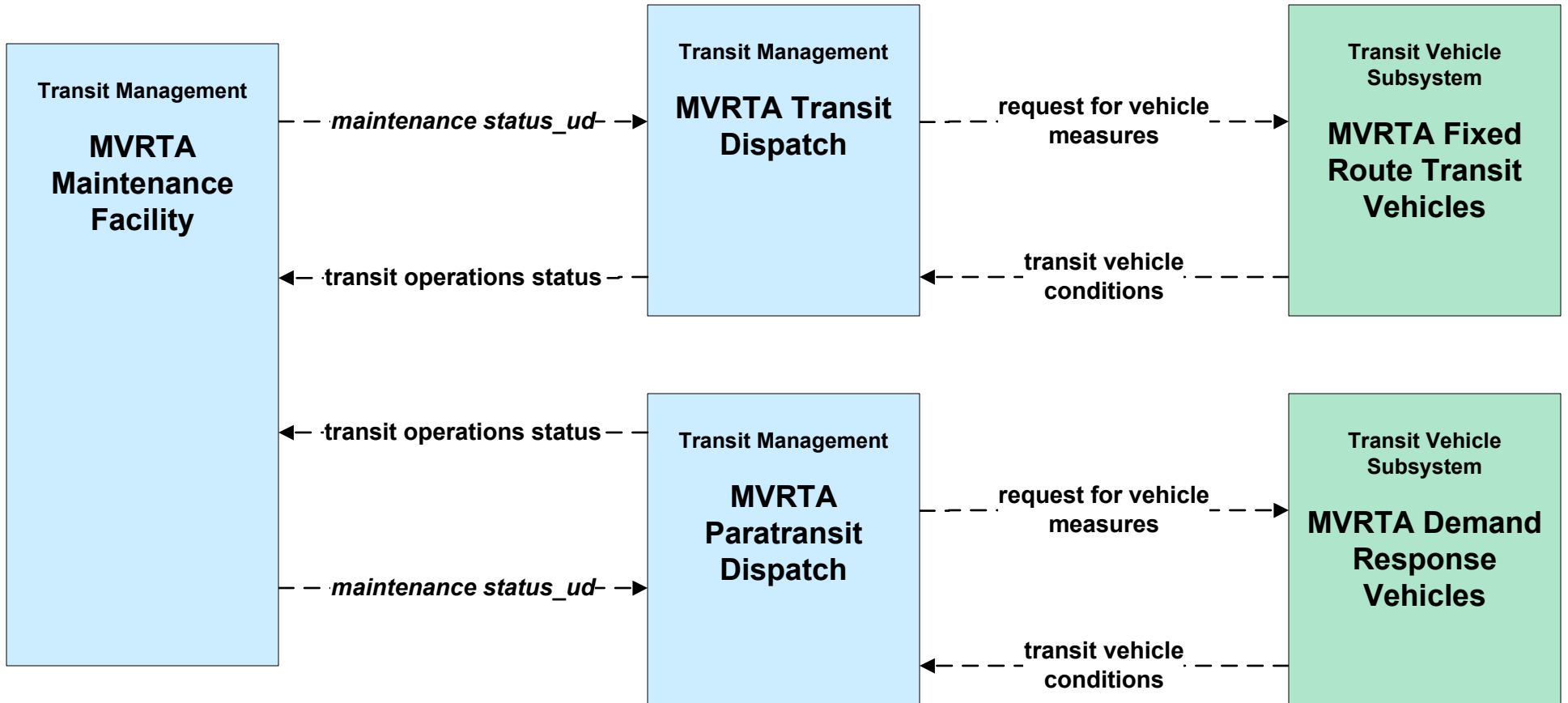
**APTS05 - Transit Security
RTA (2 of 2)**



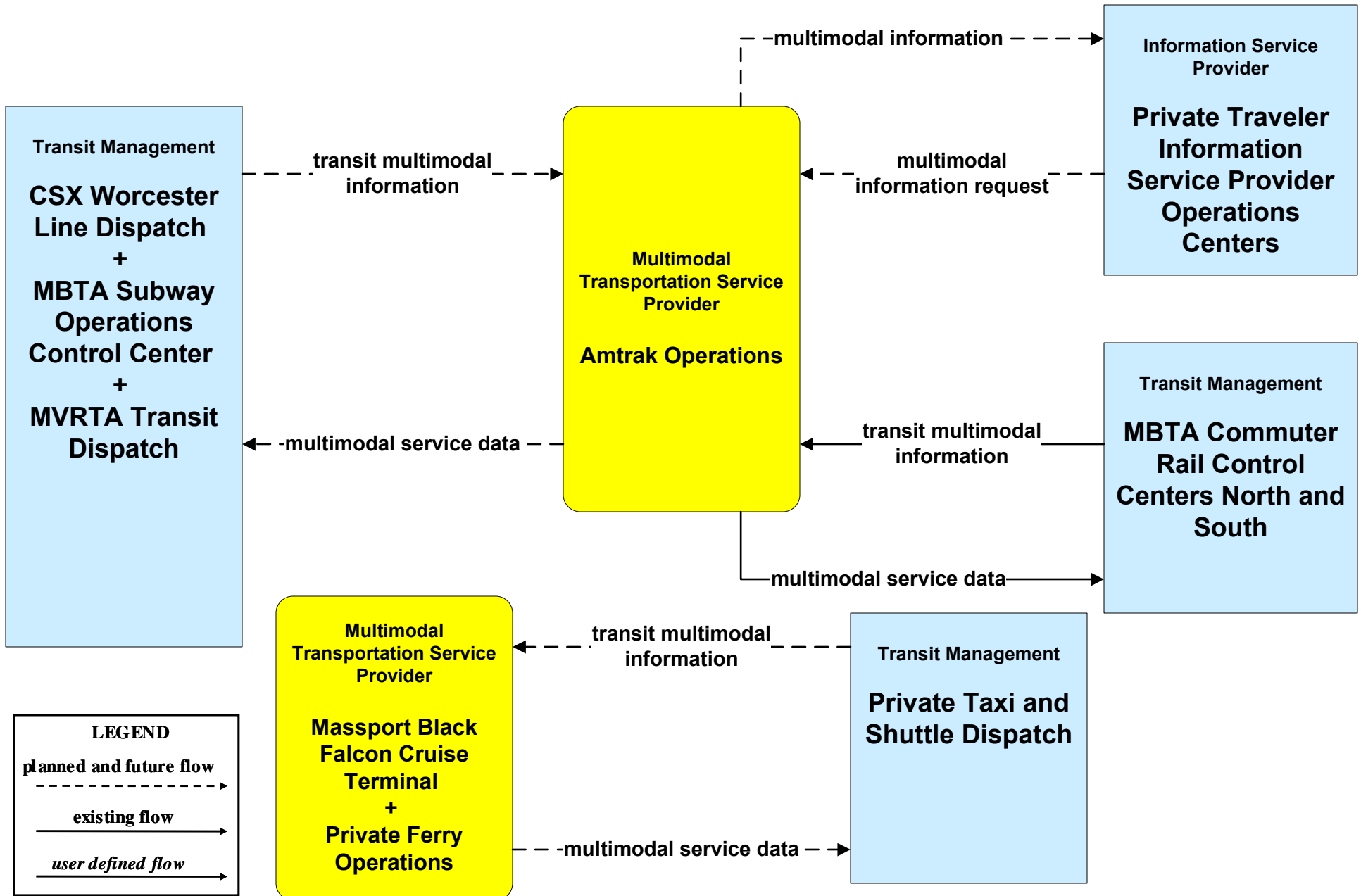
**APTS05 - Transit Security
RTA Paratransit**



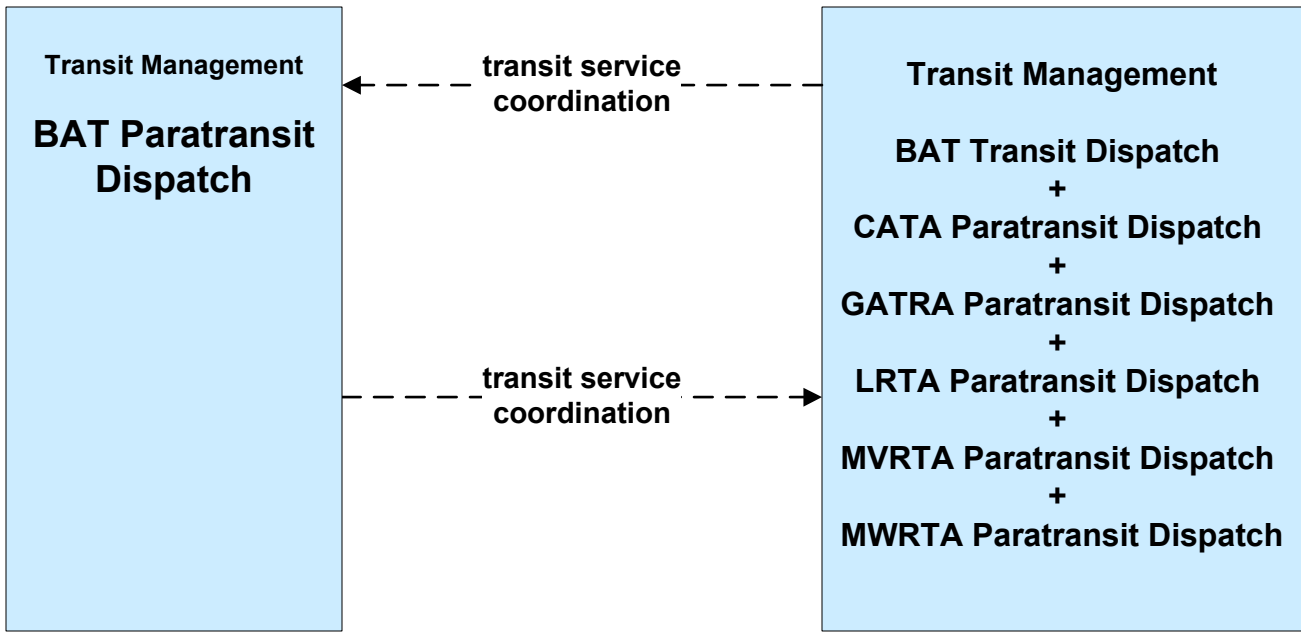
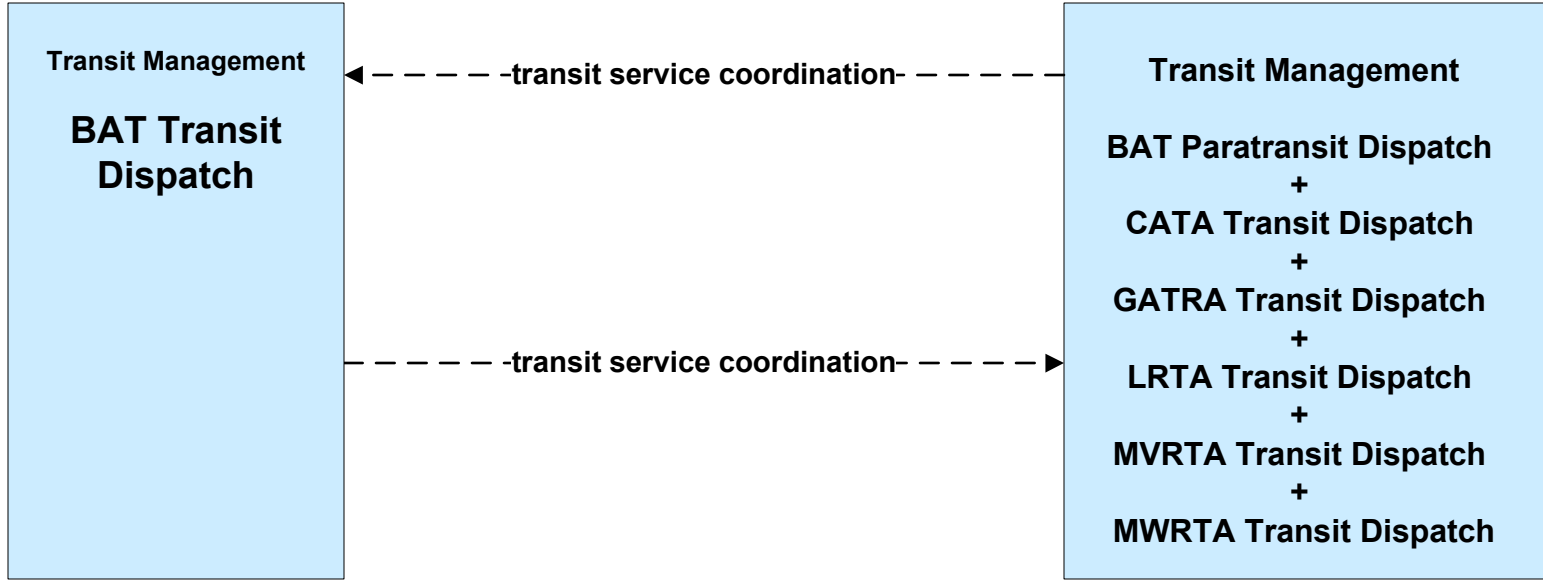
APTS06 - Transit Vehicle Maintenance MVRTA



APTS07 - Multimodal Coordination
Remote Traveler Support and Multimodal Transportation Service Providers (2 of 2)



**APTS07 - Multimodal Coordination
BAT**



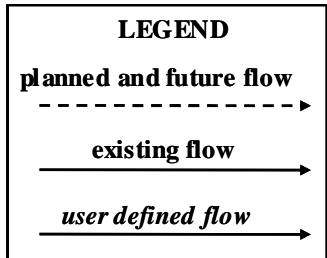
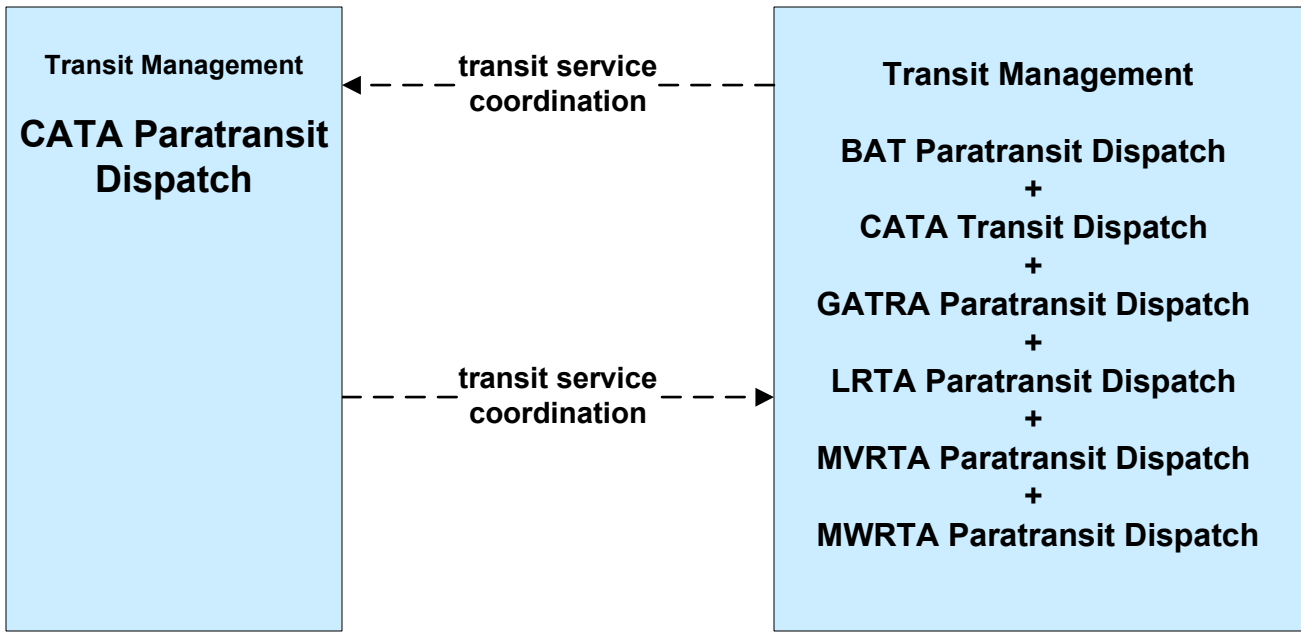
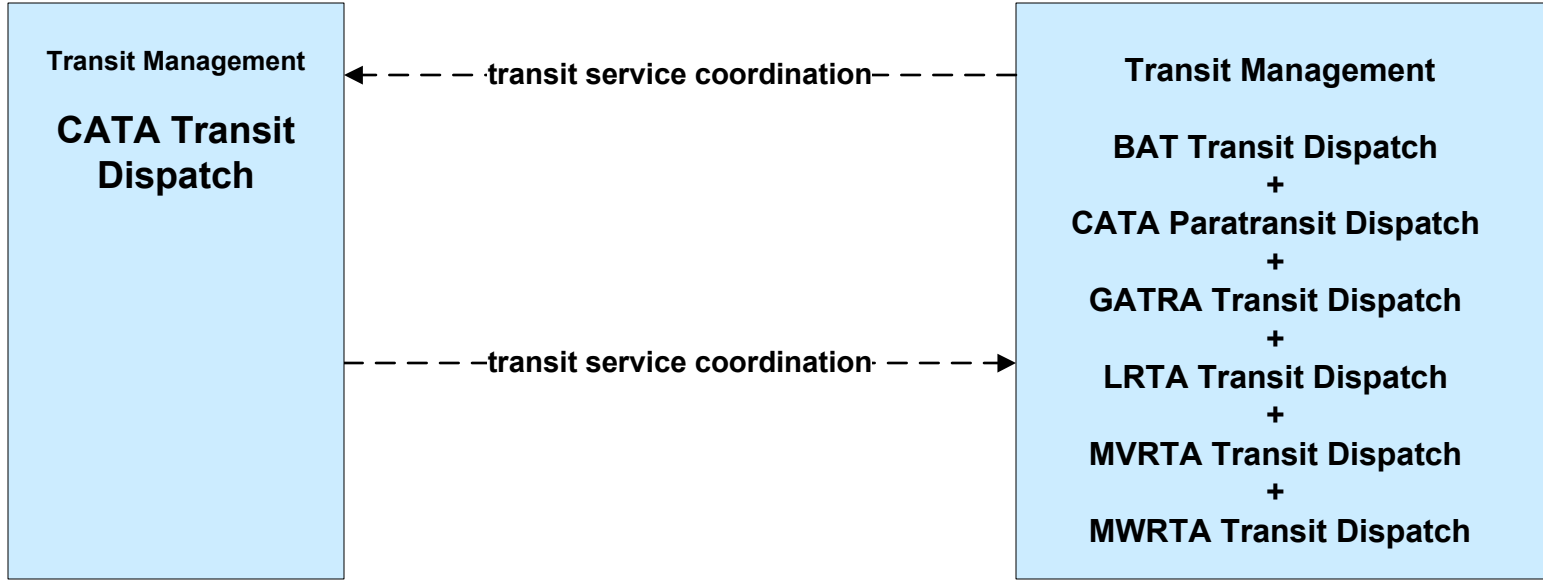
LEGEND

planned and future flow
----->

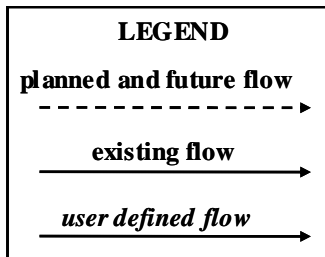
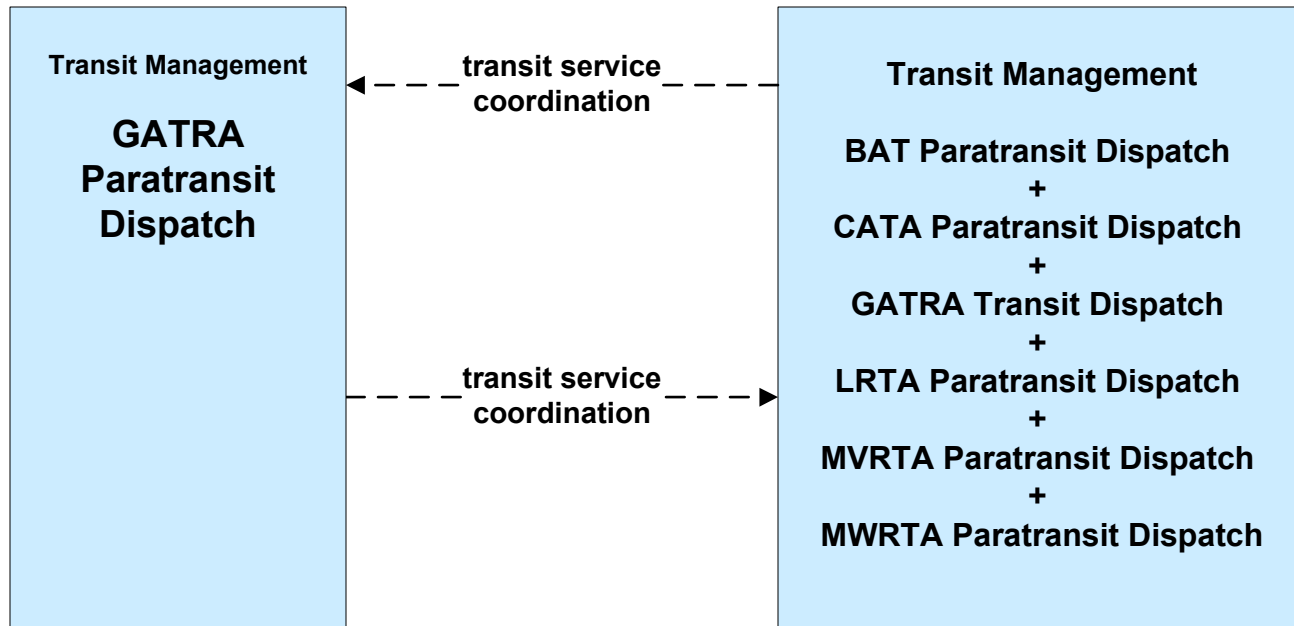
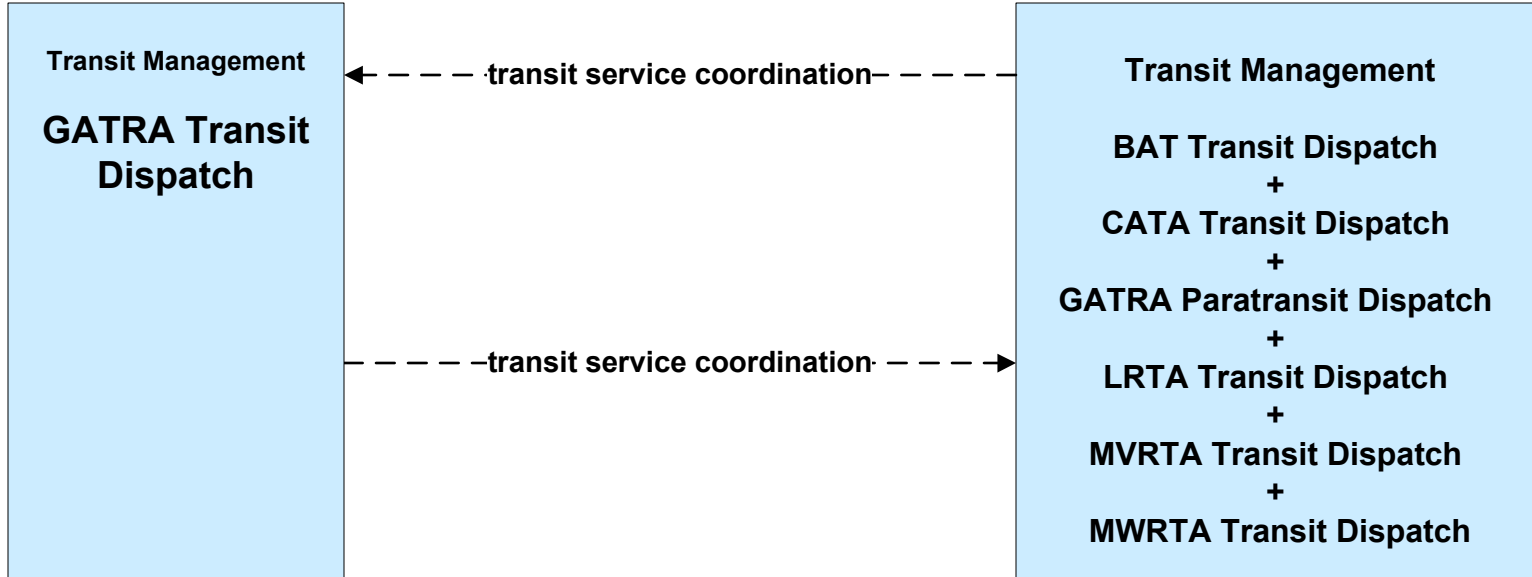
existing flow
—————>

user defined flow
—————>

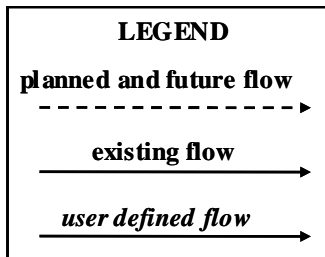
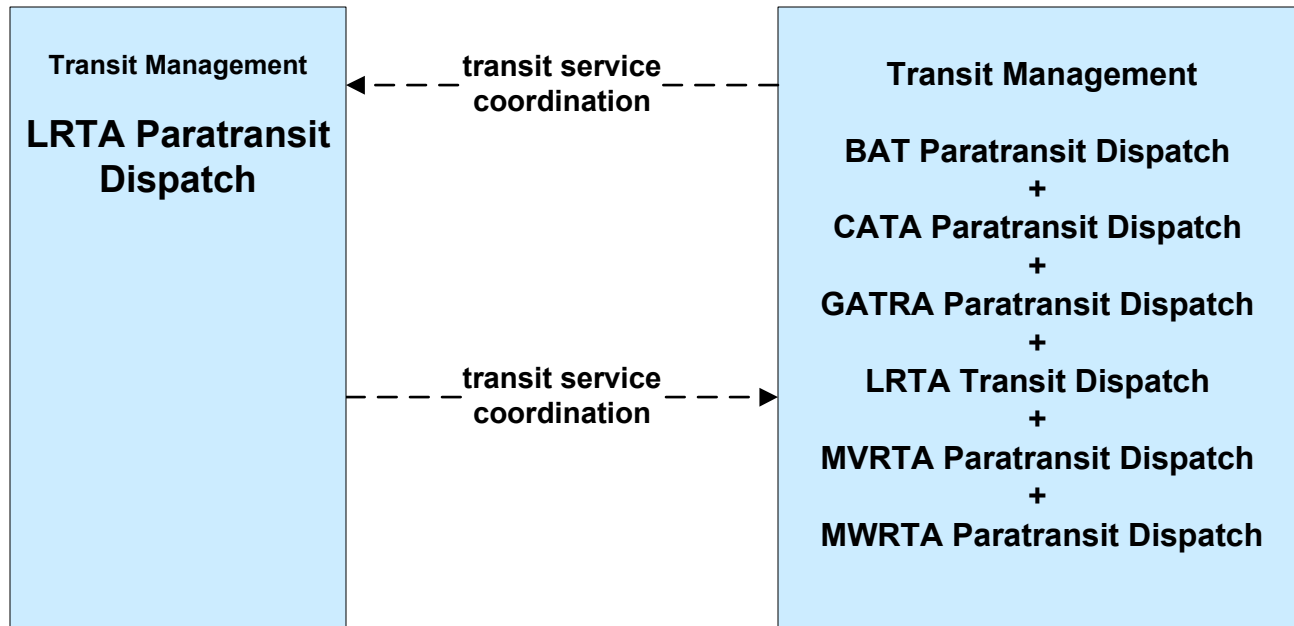
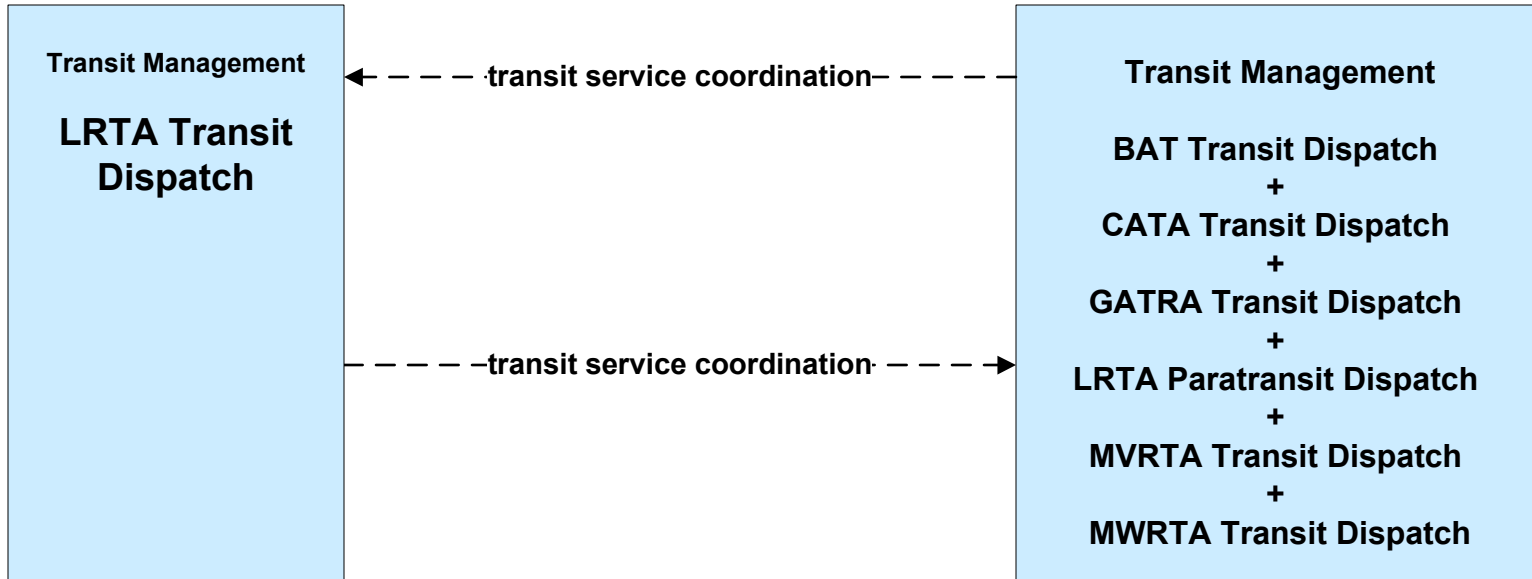
**APTS07 - Multimodal Coordination
CATA**



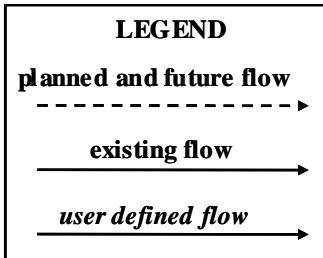
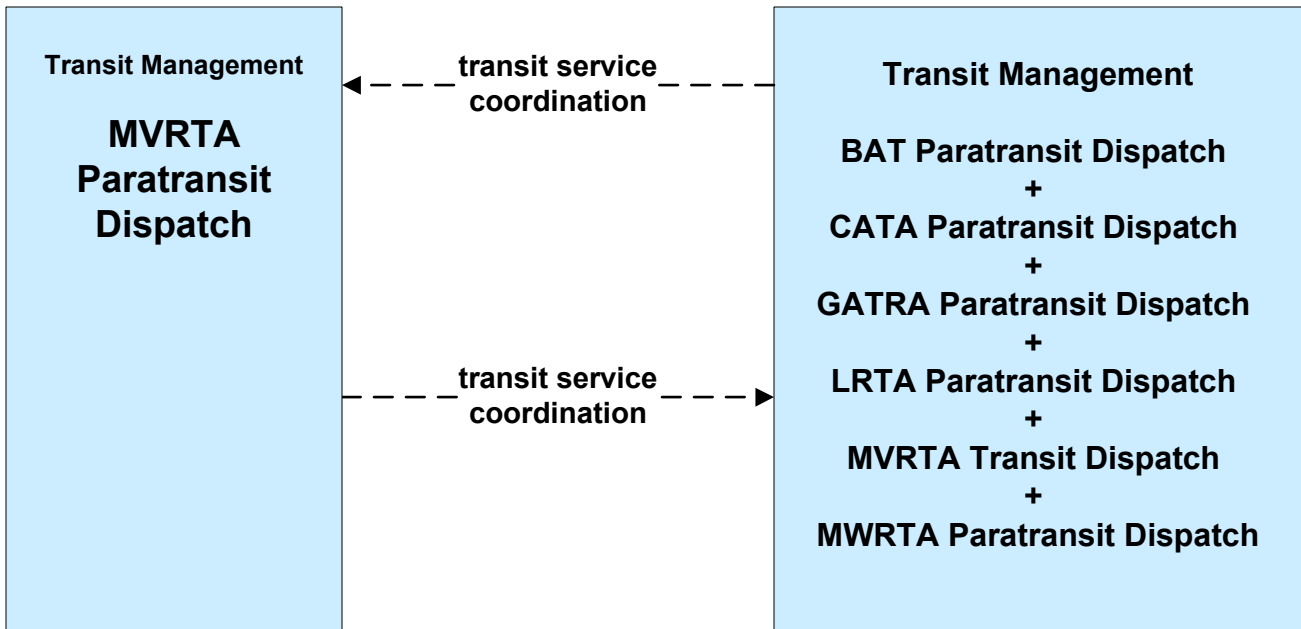
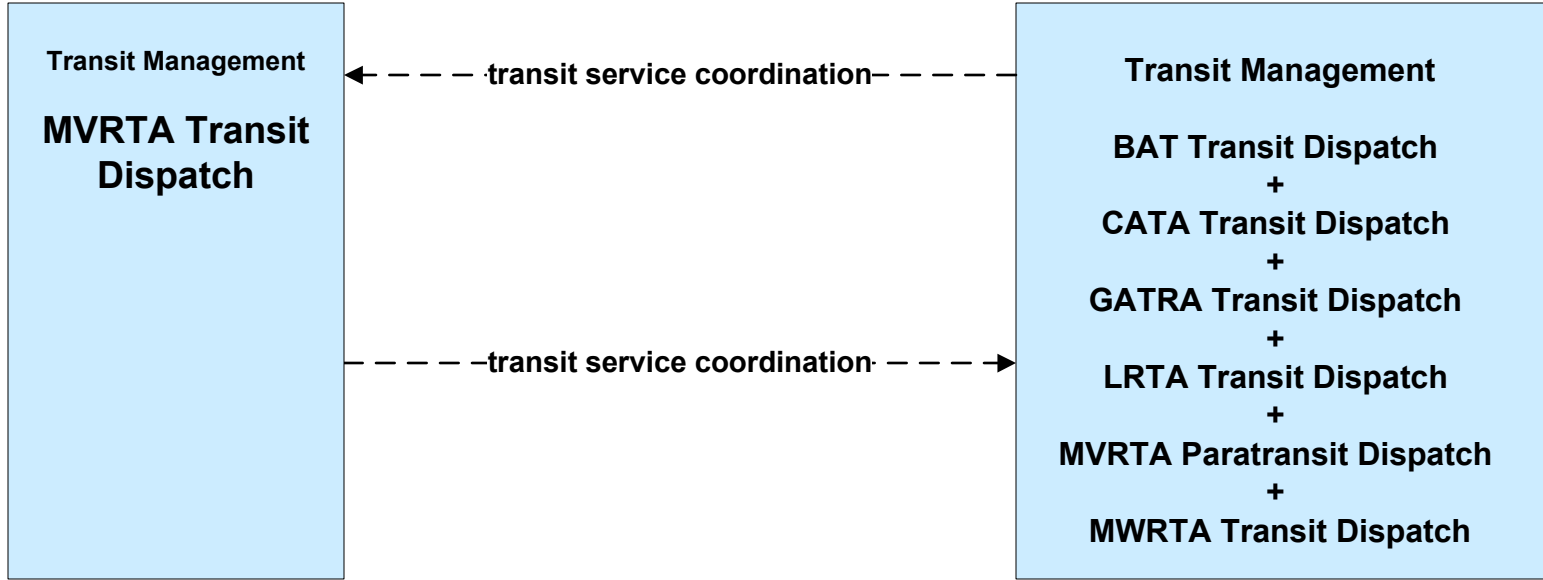
**APTS07 - Multimodal Coordination
GATRA**



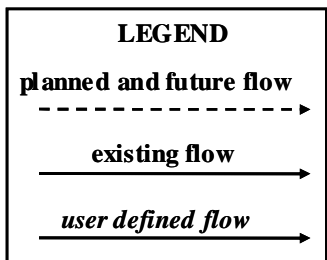
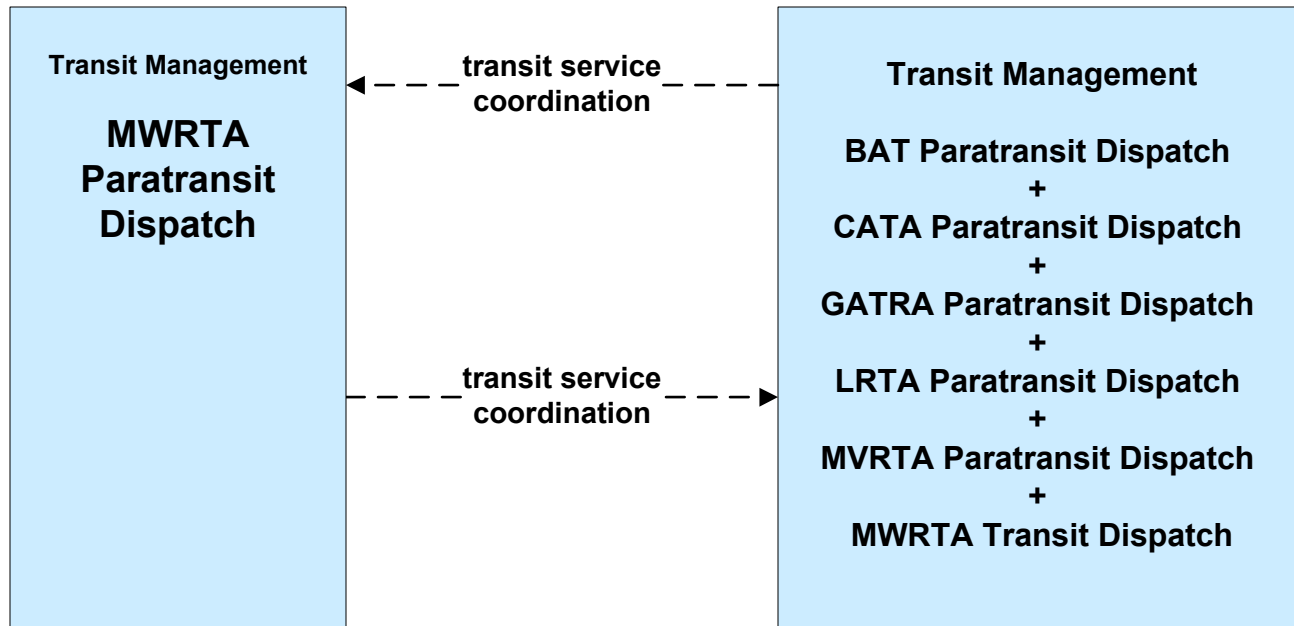
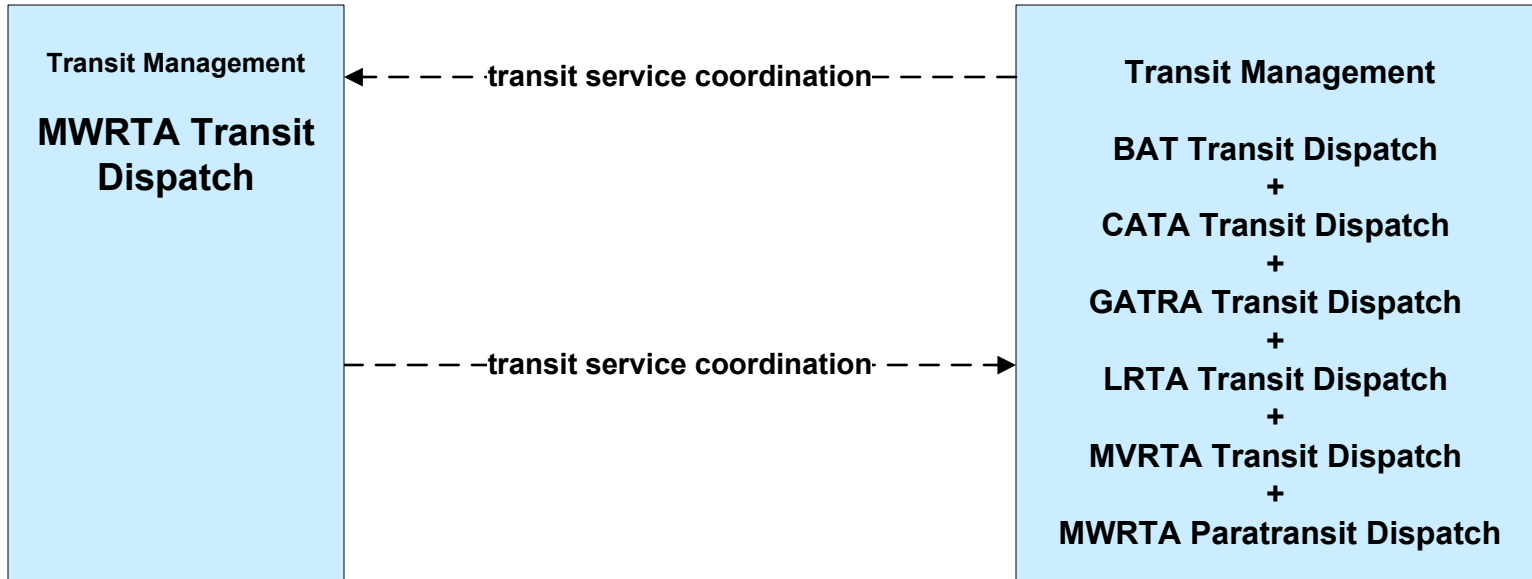
**APTS07 - Multimodal Coordination
LRTA**



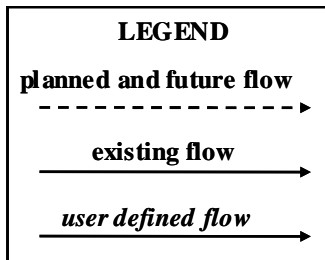
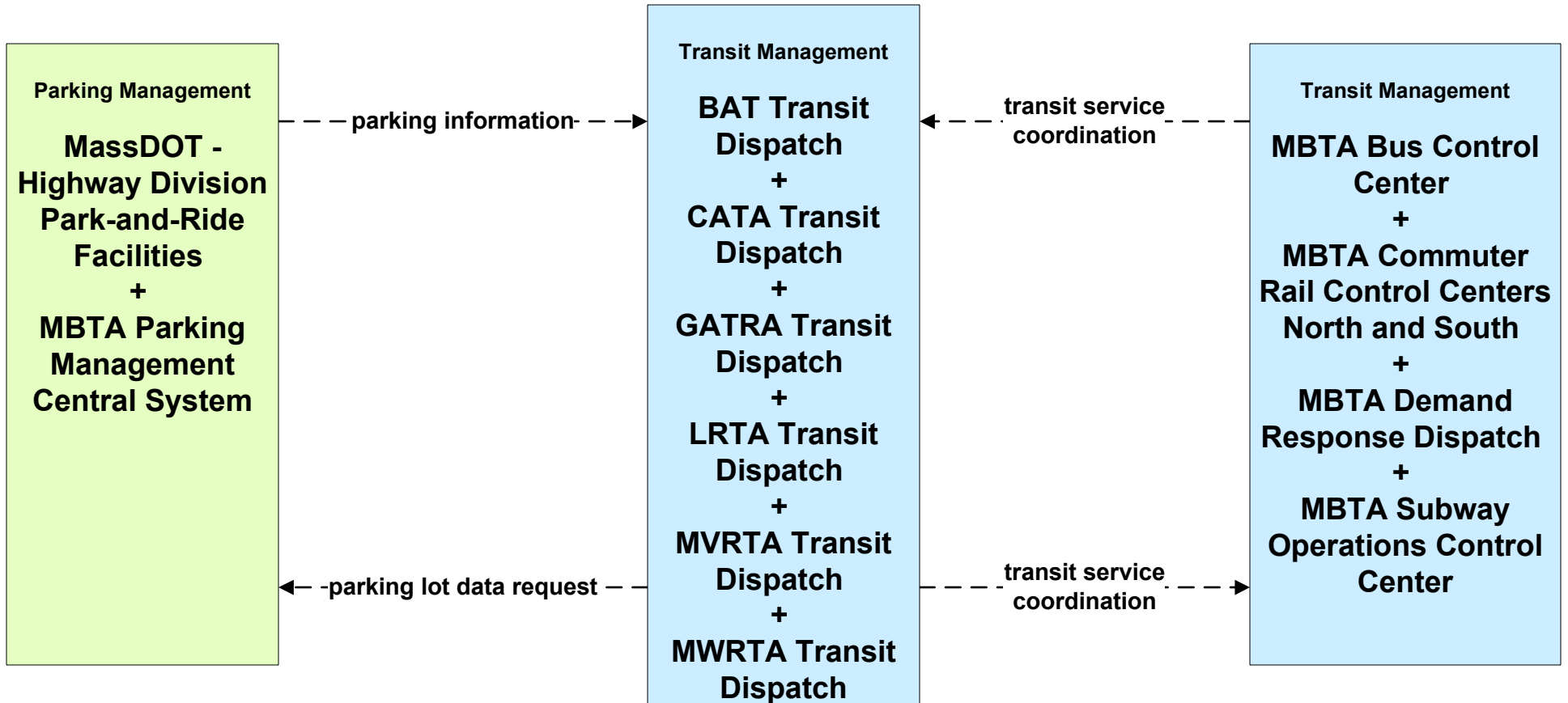
**APTS07 - Multimodal Coordination
MVRTA**



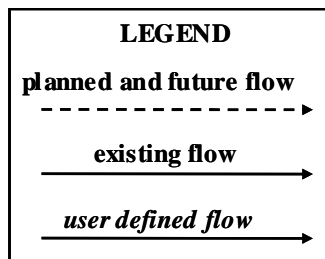
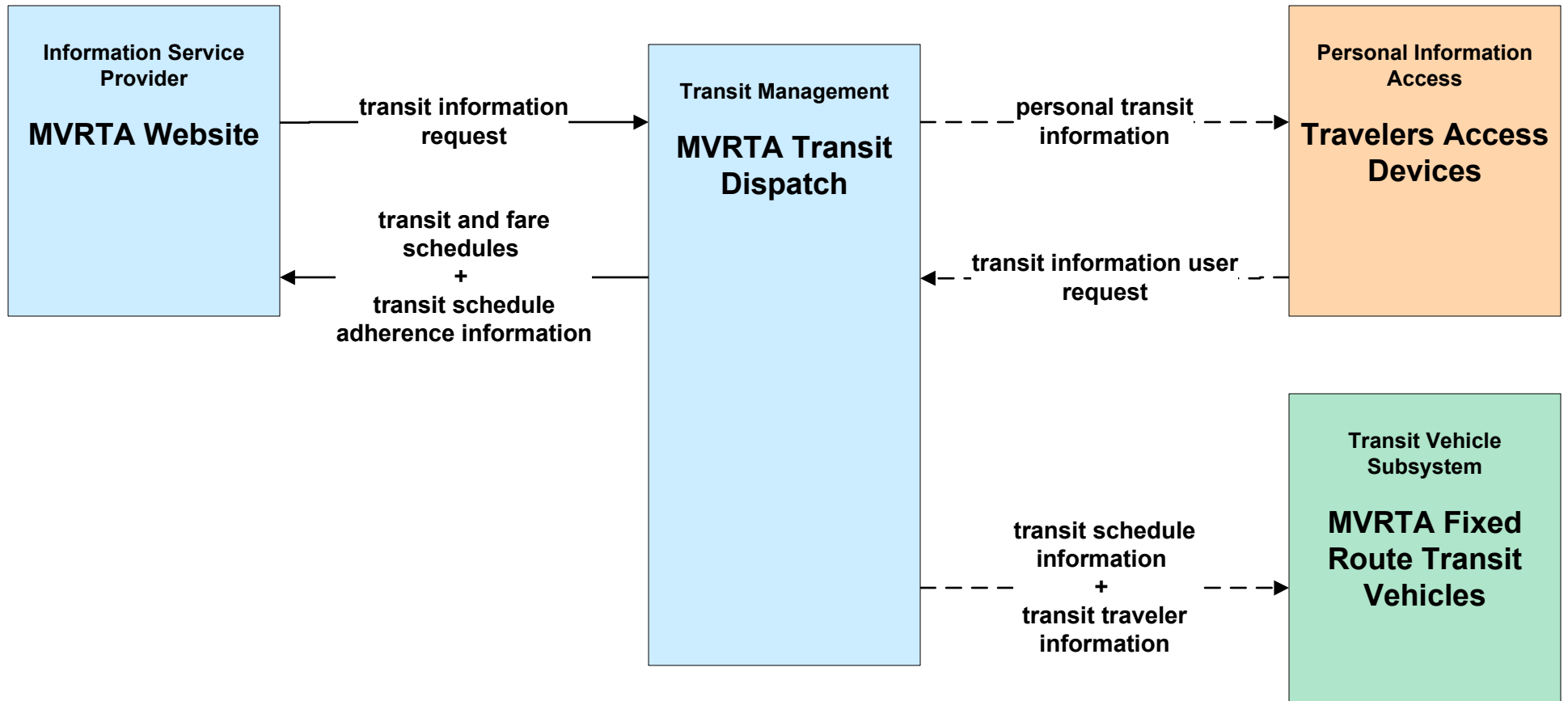
**APTS07 - Multimodal Coordination
MWRTA**



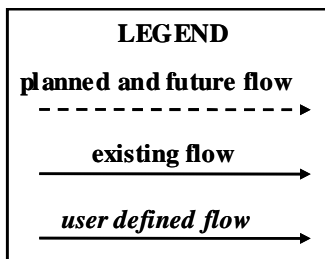
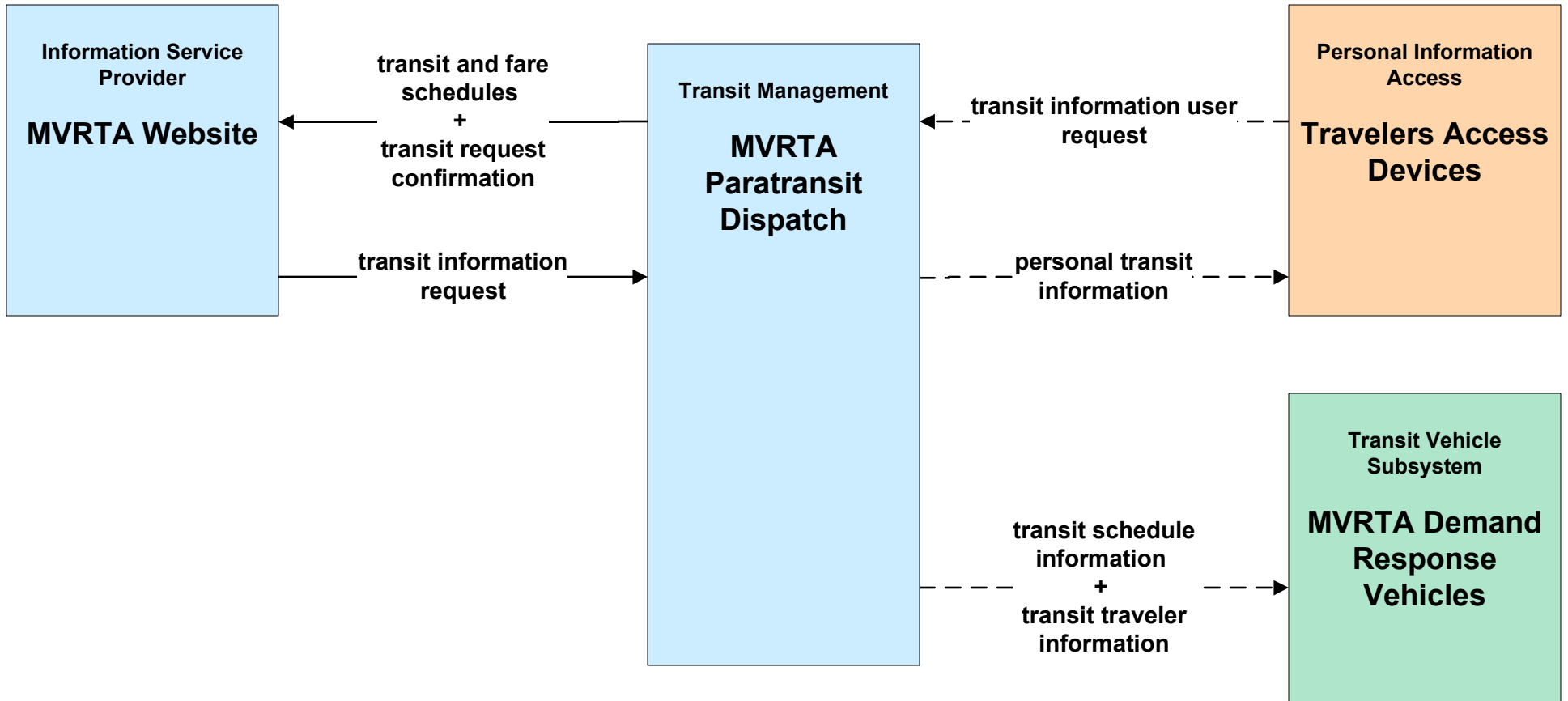
**APTS07 - Multimodal Coordination
RTA**



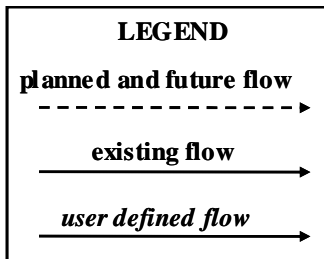
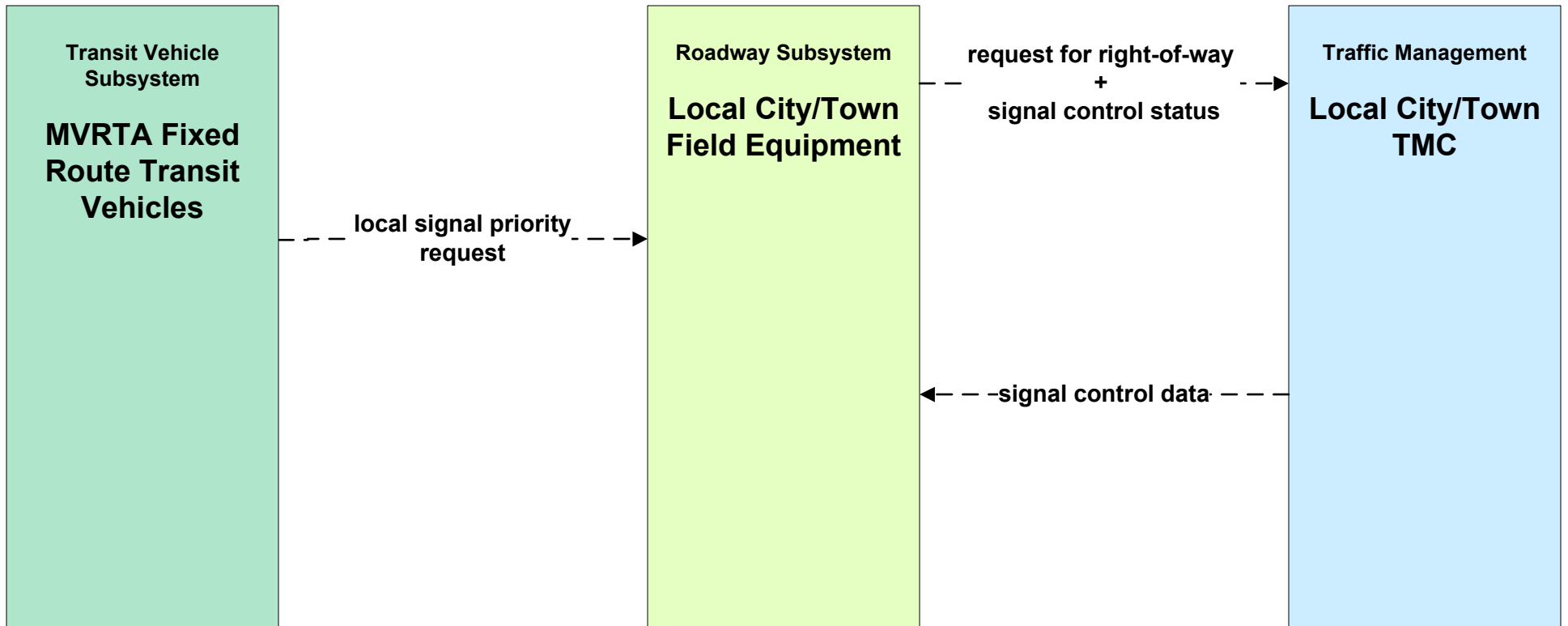
APTS08 - Transit Traveler Information MVRTA (1 of 2)



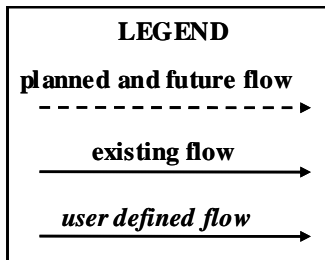
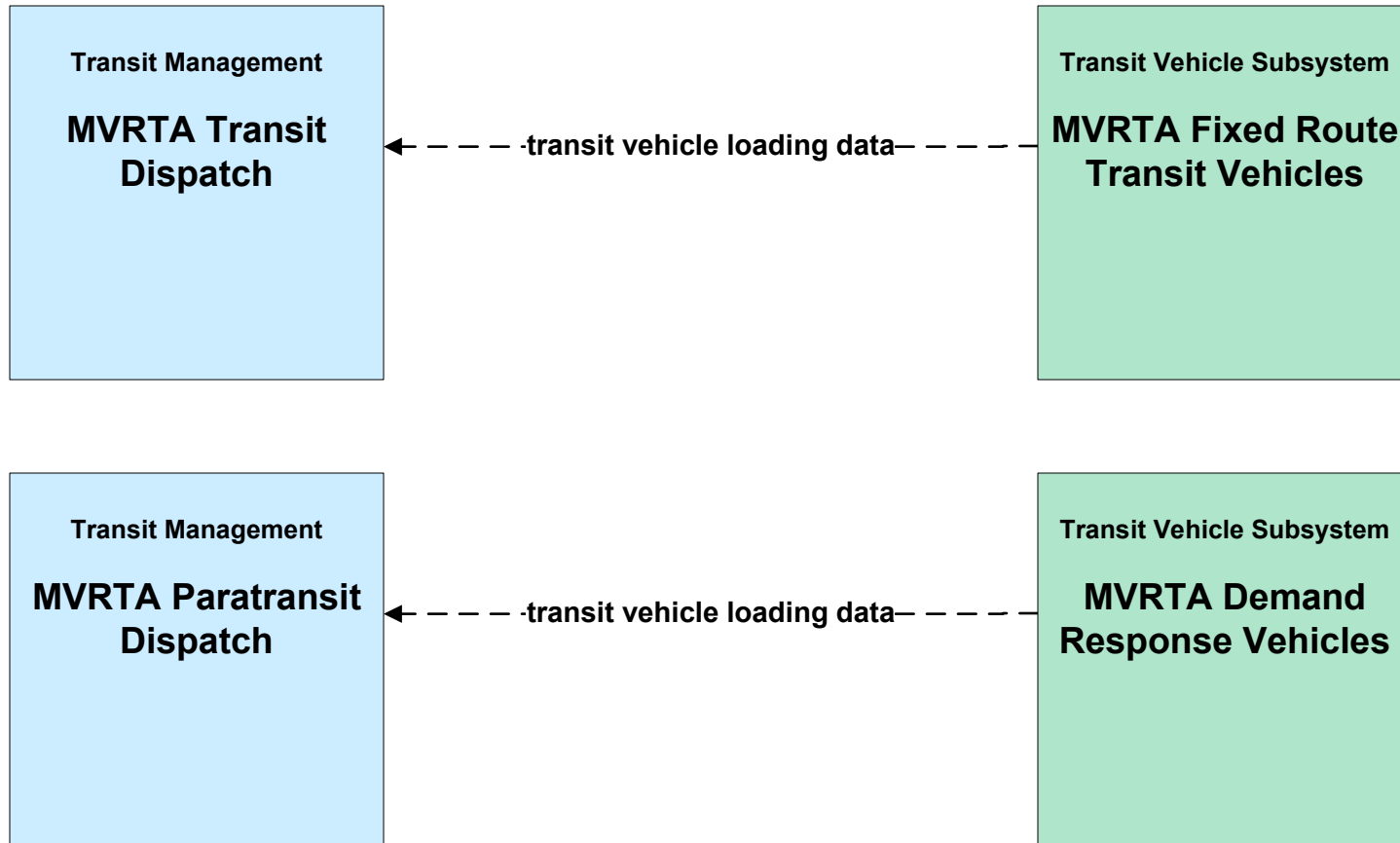
**APTS08 - Transit Traveler Information
MVRTA (2 of 2)**



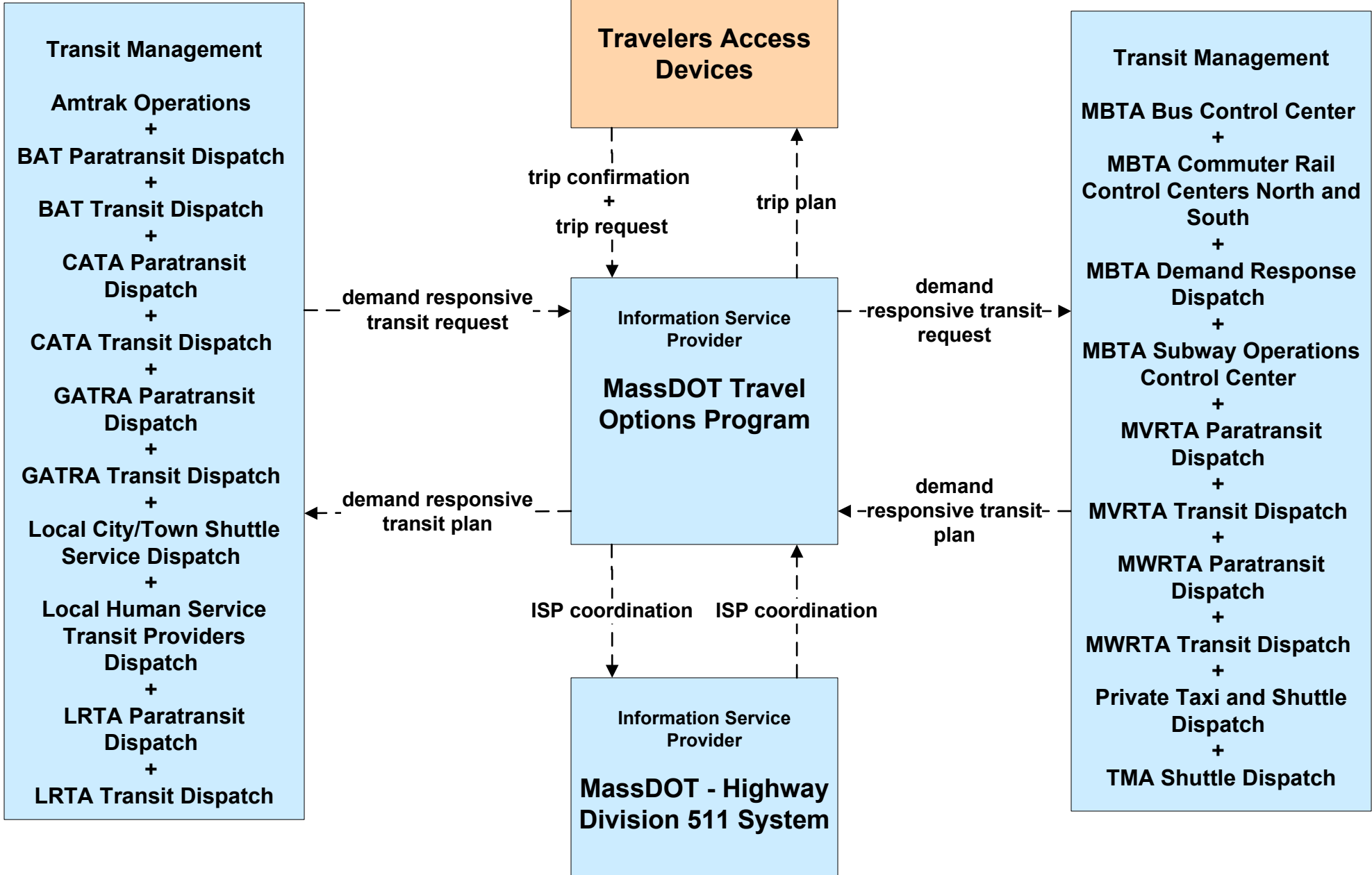
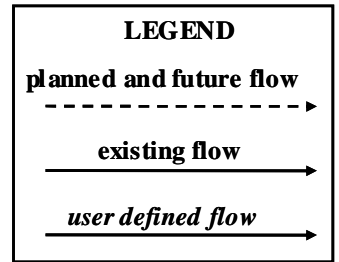
APTS09 - Transit Signal Priority MVRTA



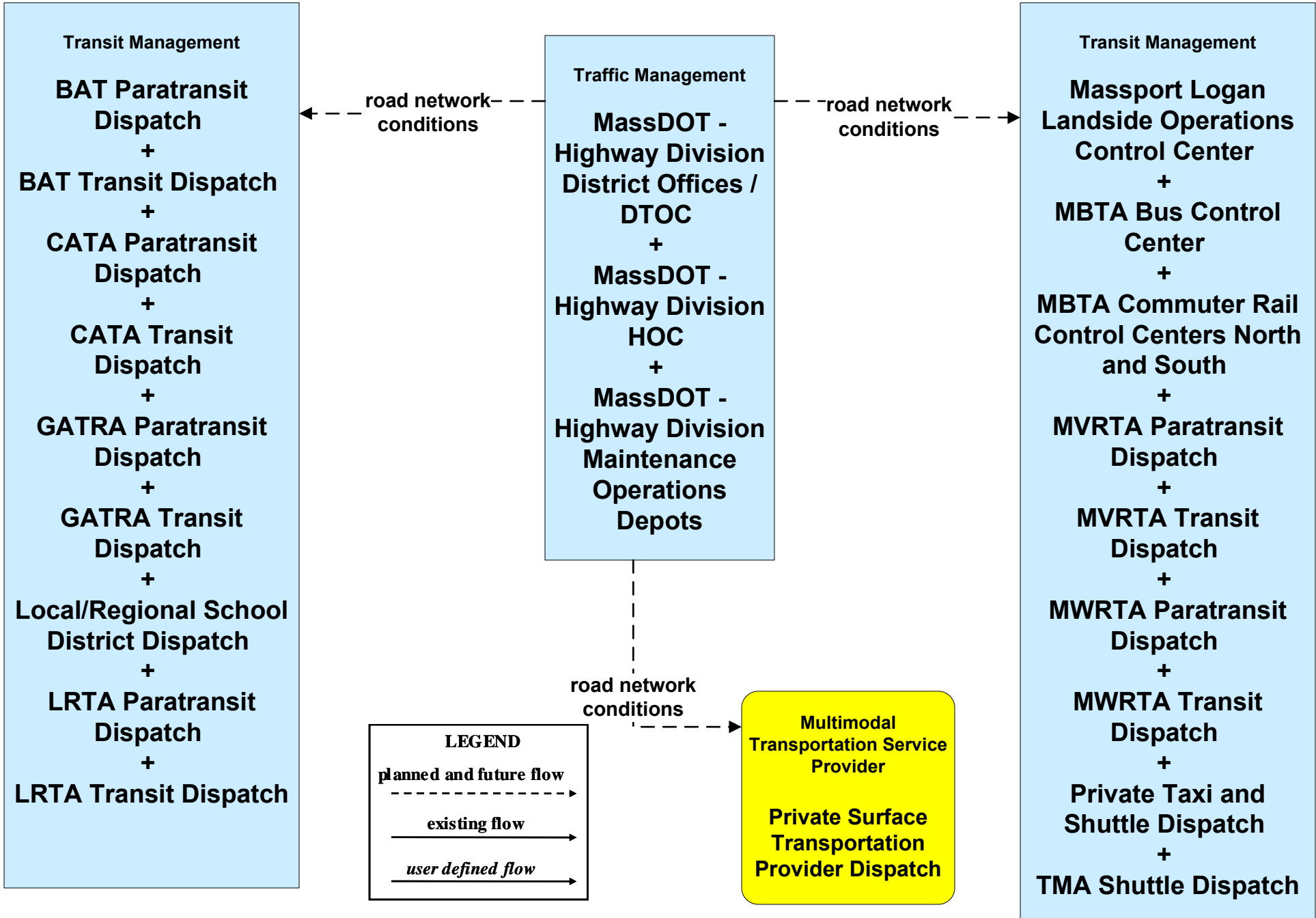
**APTS10 - Transit Passenger Counting
MVRTA**



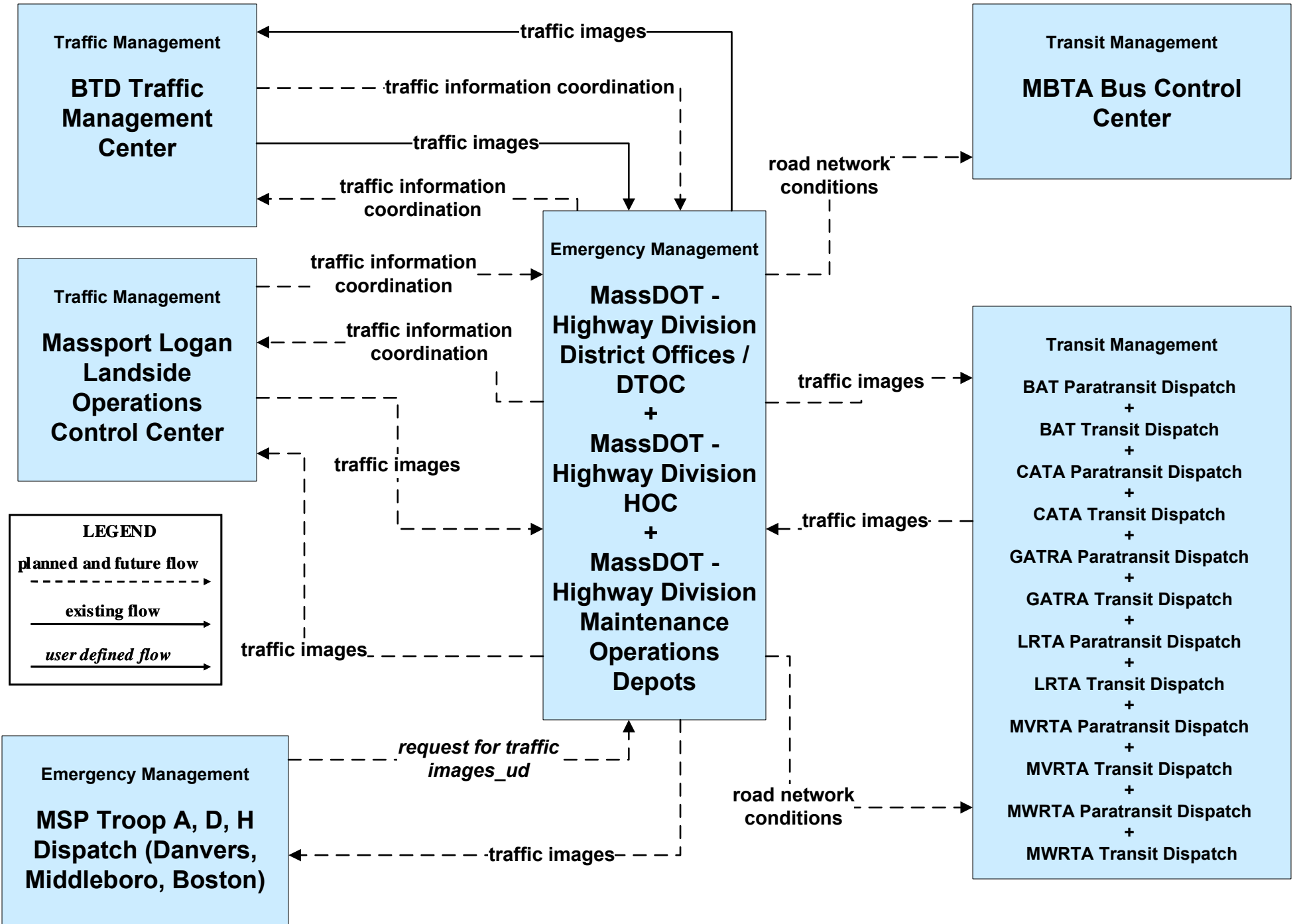
ATIS08 - Dynamic Ridesharing MassDOT Travel Options Program



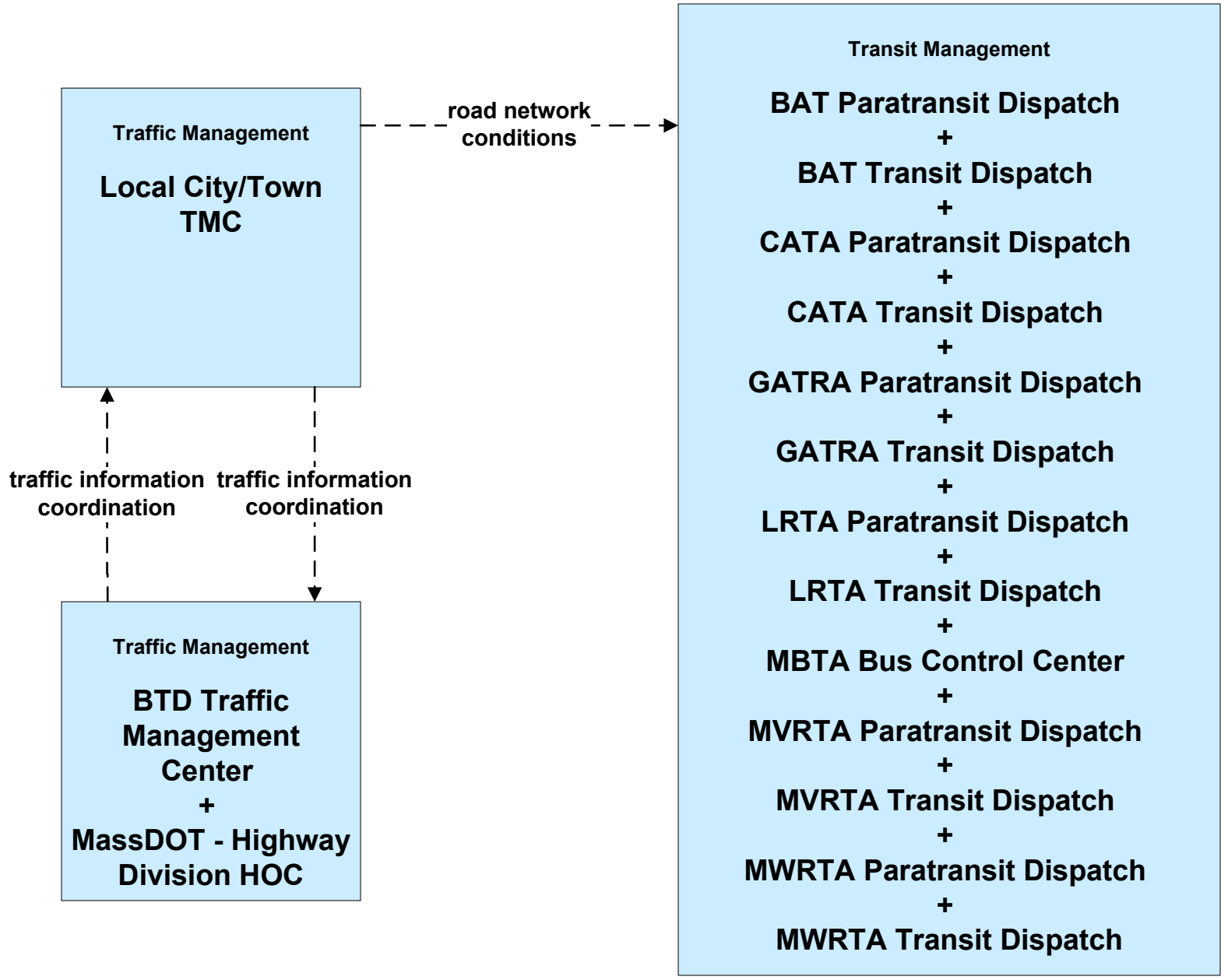
**ATMS06 - Traffic Information Dissemination
MassDOT - Highway Division (2 of 2)**



**ATMS07 - Regional Traffic Control
MassDOT - Highway Division (2 of 2)**

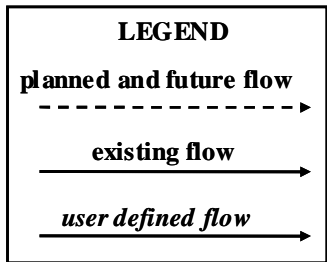
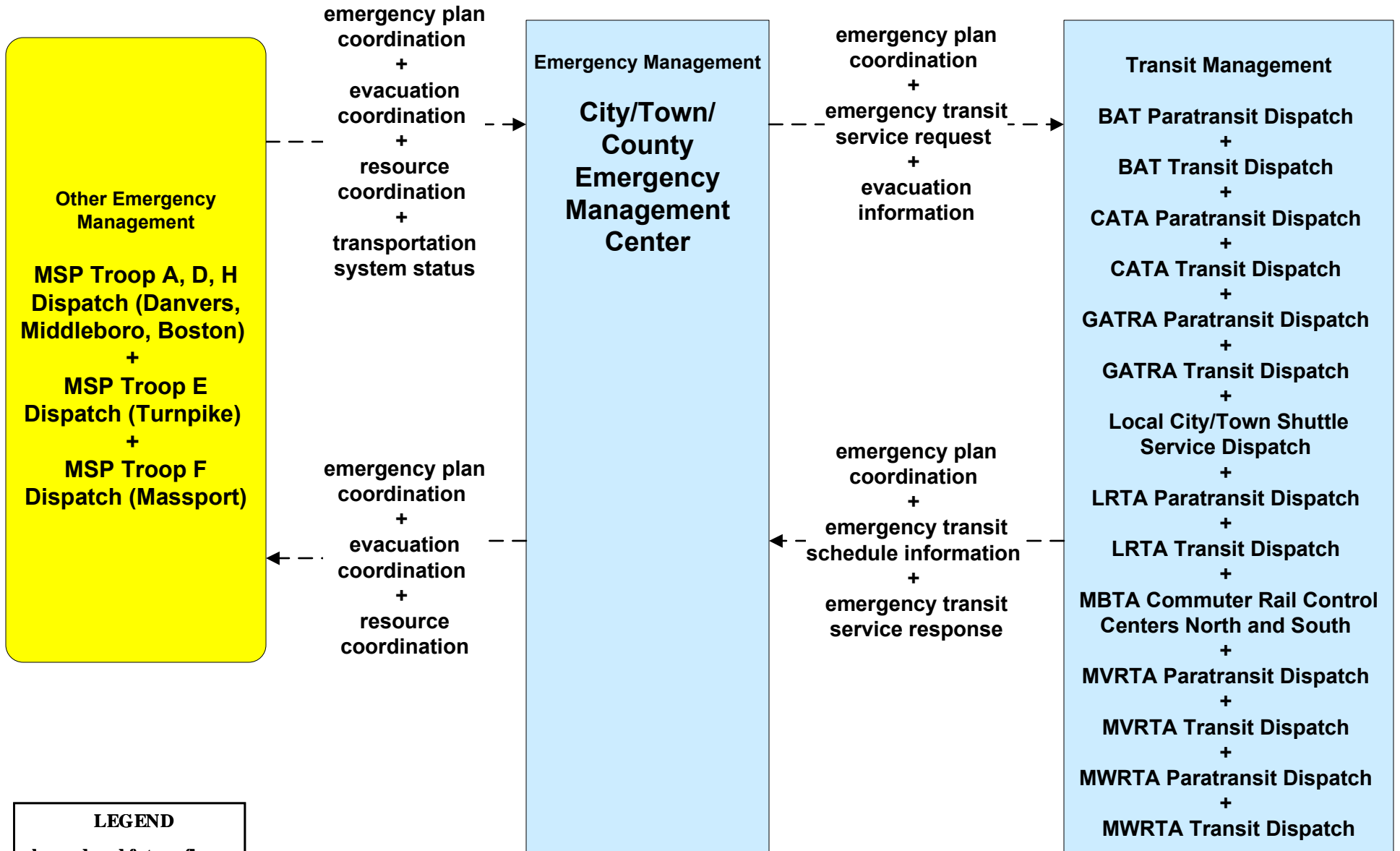


**ATMS07 - Regional Traffic Control
Local Cities/Towns**

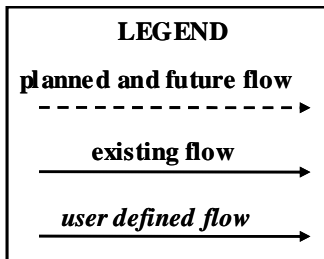
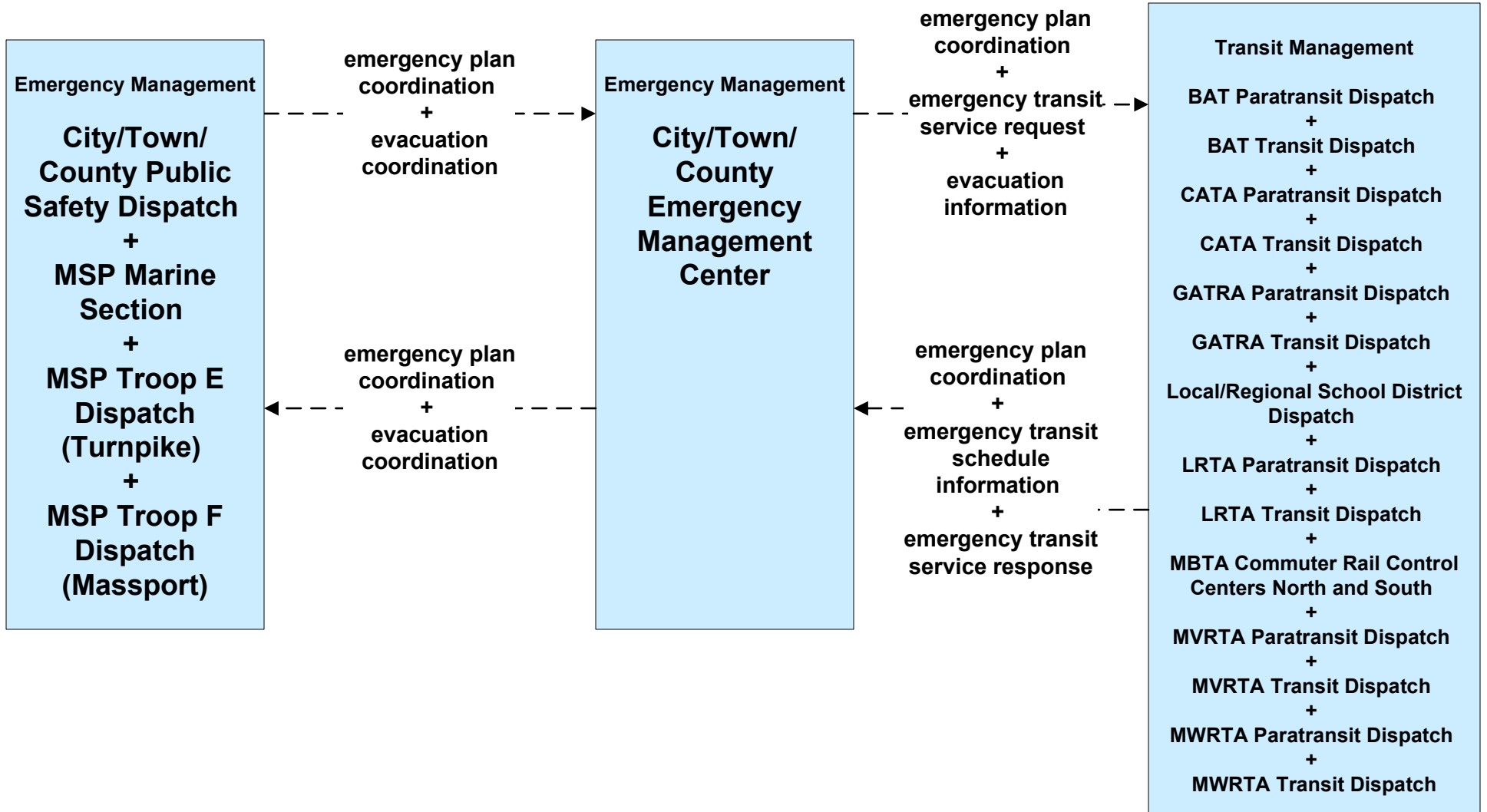


EM08 - Disaster Response

City/Town/County Emergency Management Center (2 of 2)



**EM09 - Evacuation and Reentry Management
City/Town/County Emergency Management Center (2 of 2)**



**MC04 - Weather Information Processing and Distribution
Private and National Weather Services (1 of 2)**

