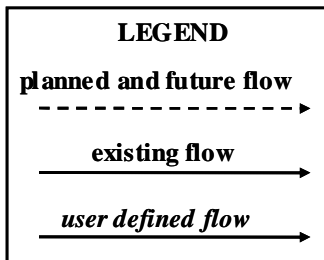
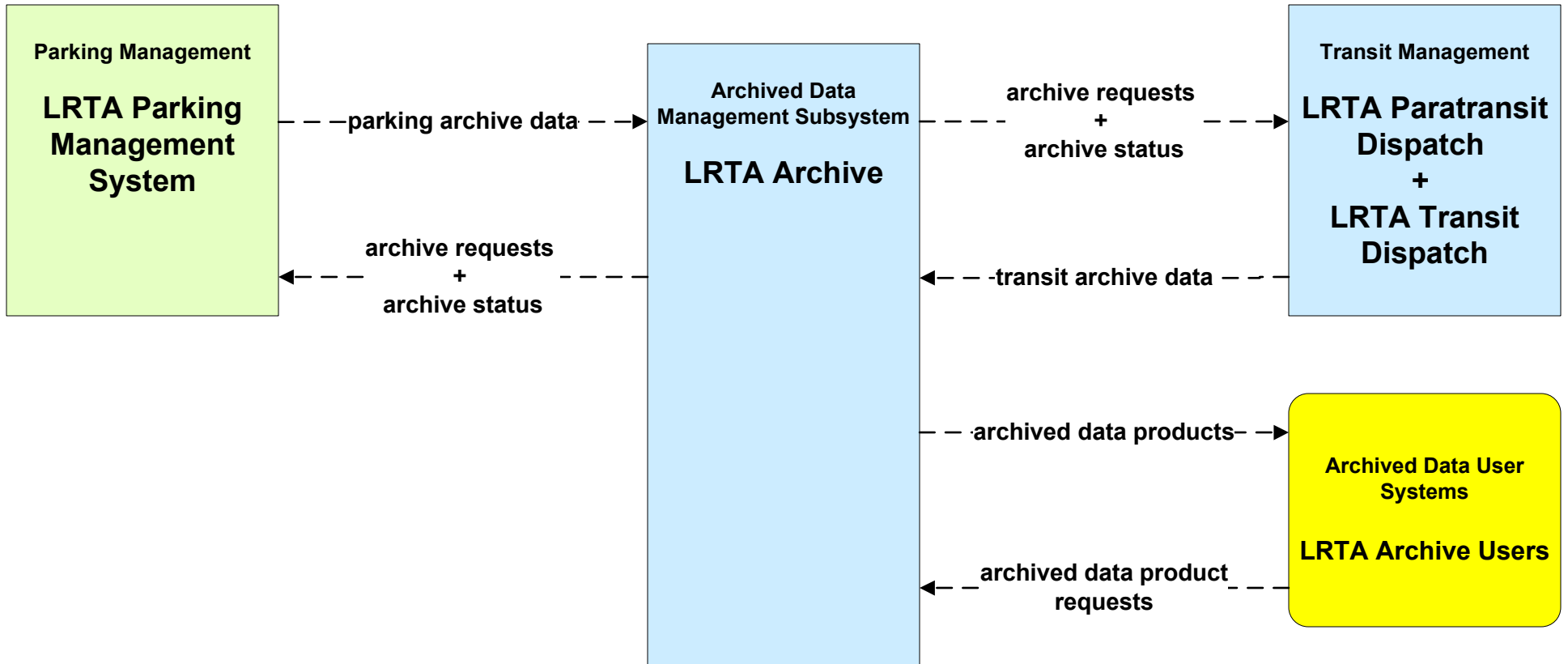
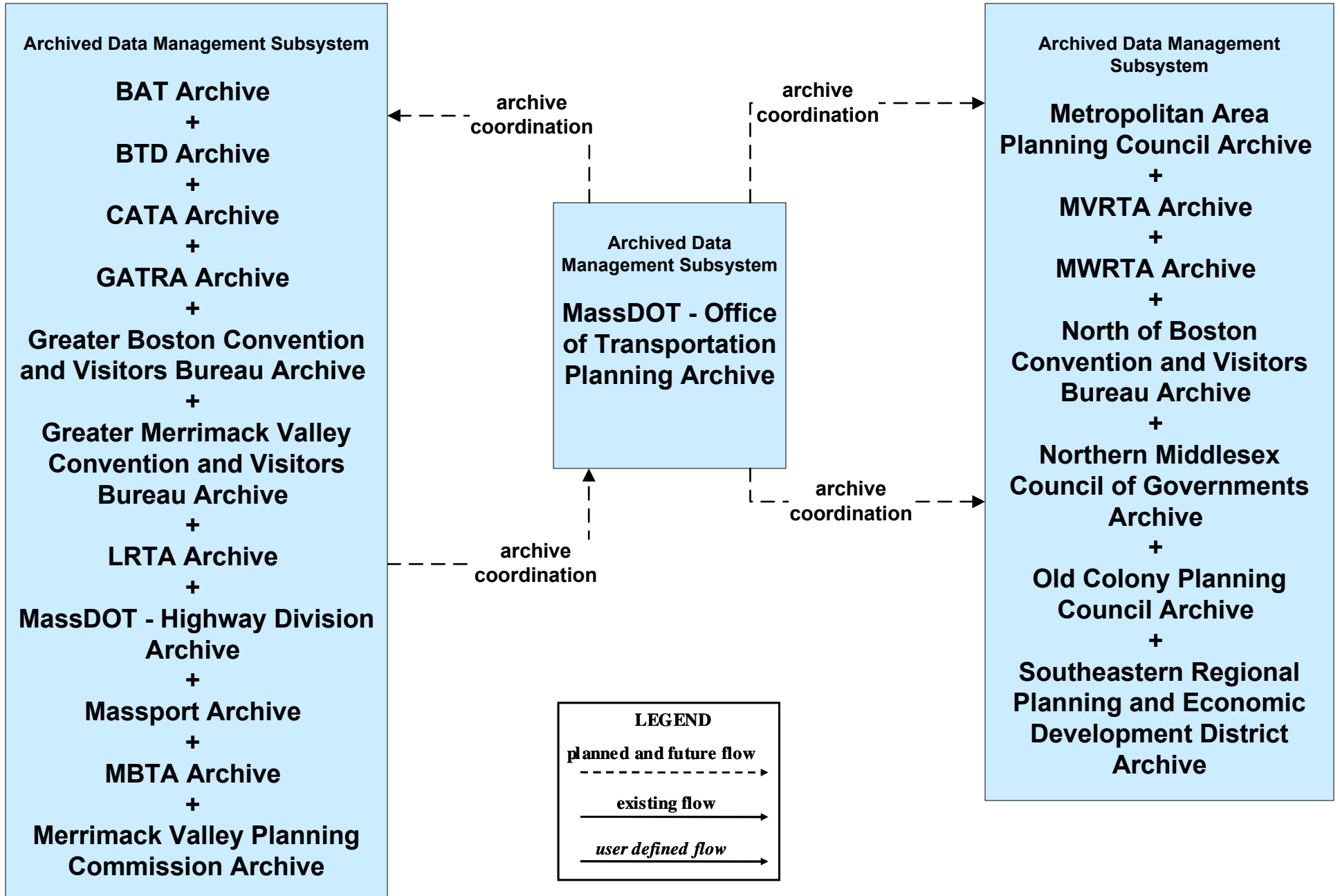


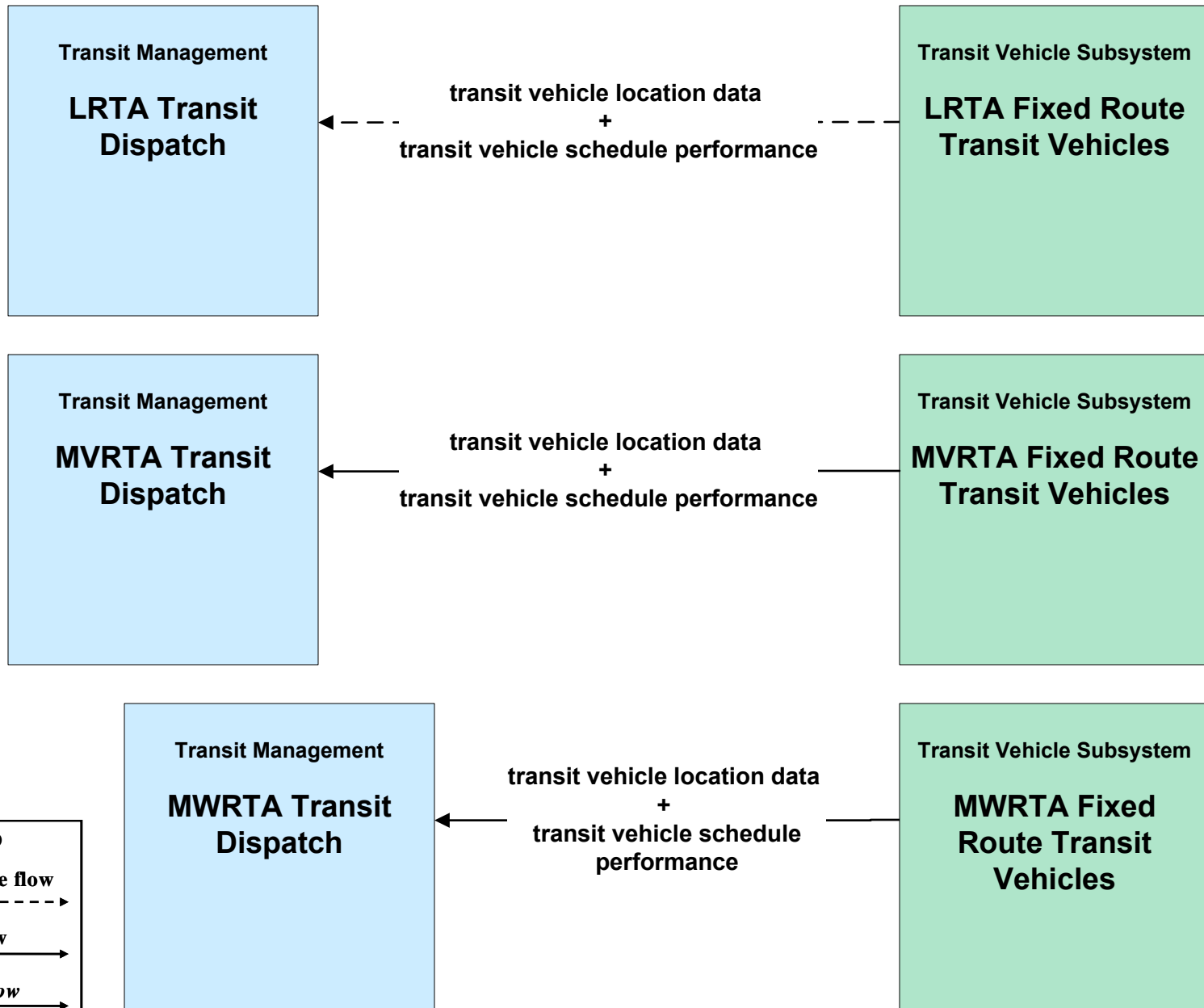
**AD1 - ITS Data Mart
LRTA**



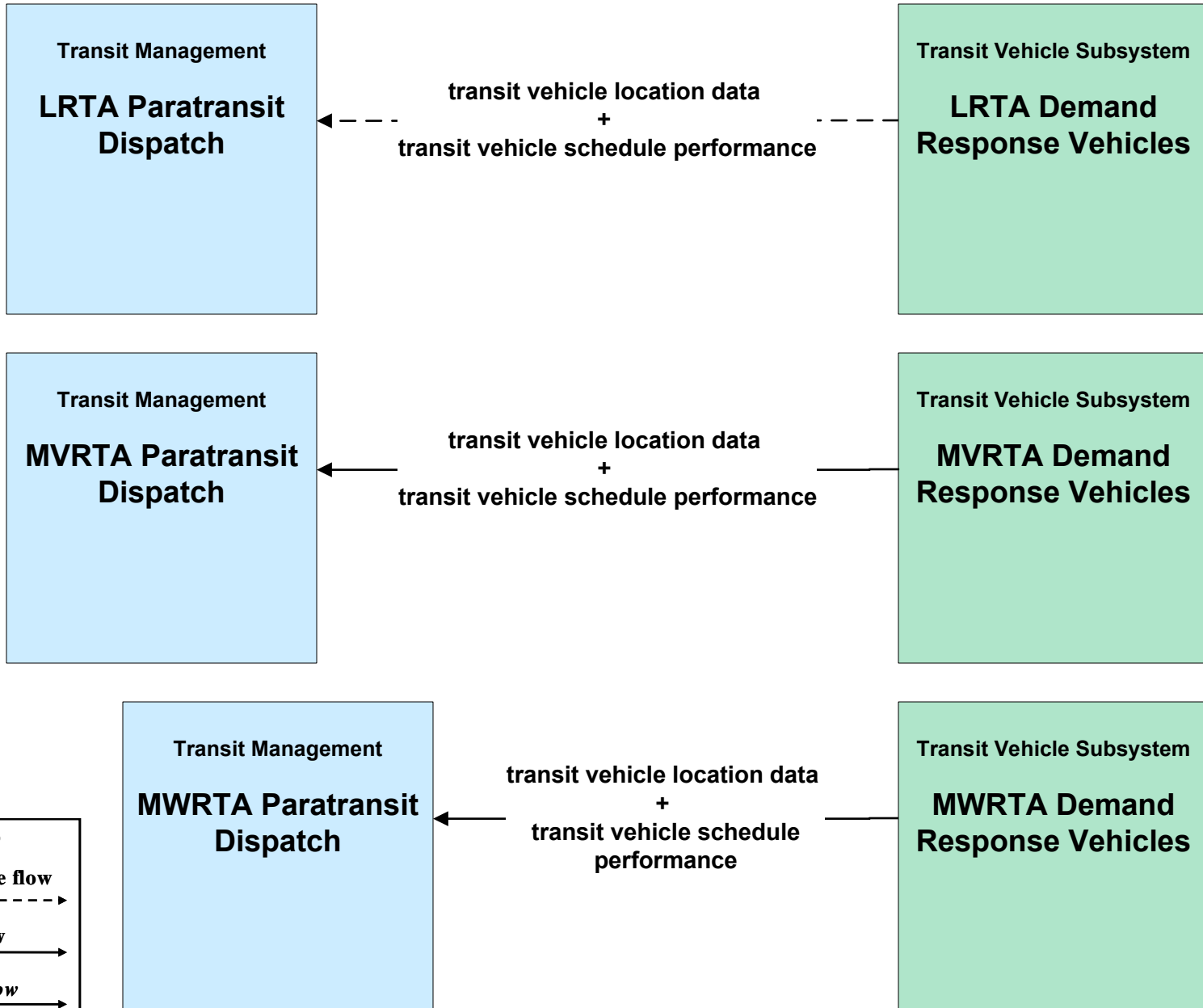
**AD3 - ITS Virtual Data Warehouse
MassDOT - Office of Transportation Planning**



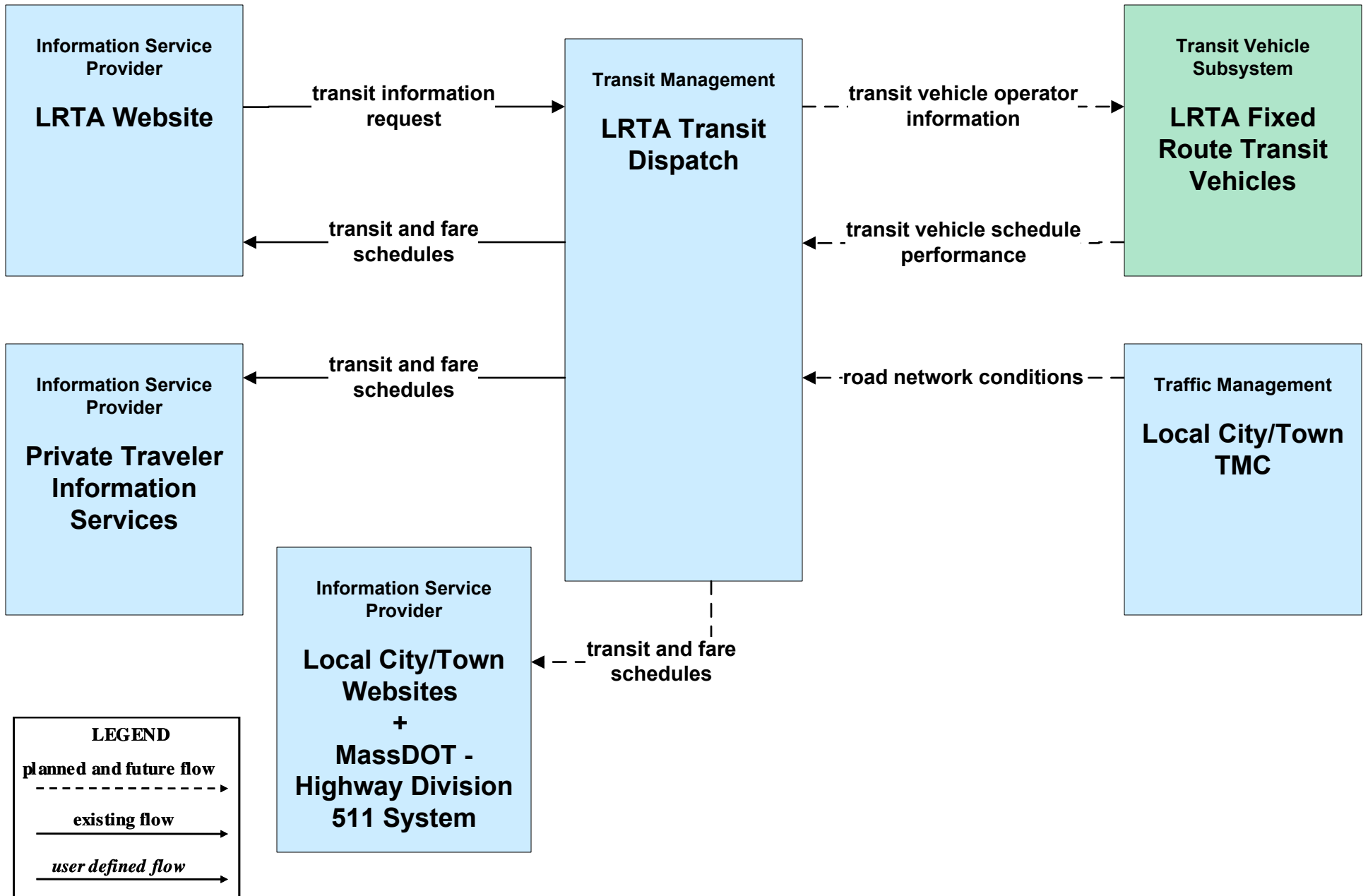
APTS01 - Transit Vehicle Tracking RTA (2 of 2)



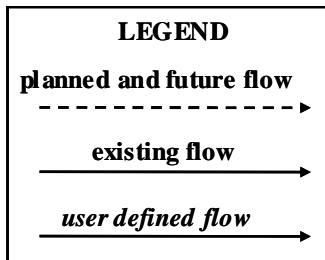
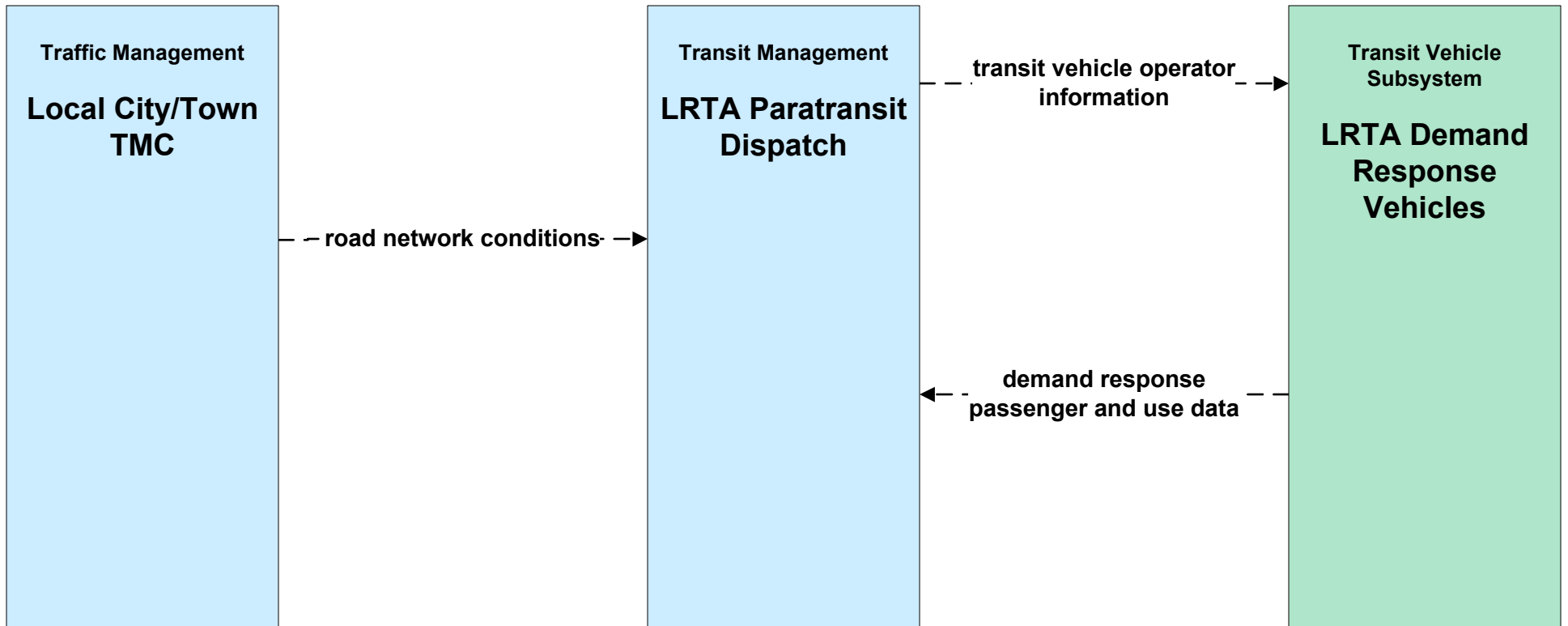
**APTS01 - Transit Vehicle Tracking
RTA Paratransit (2 of 2)**



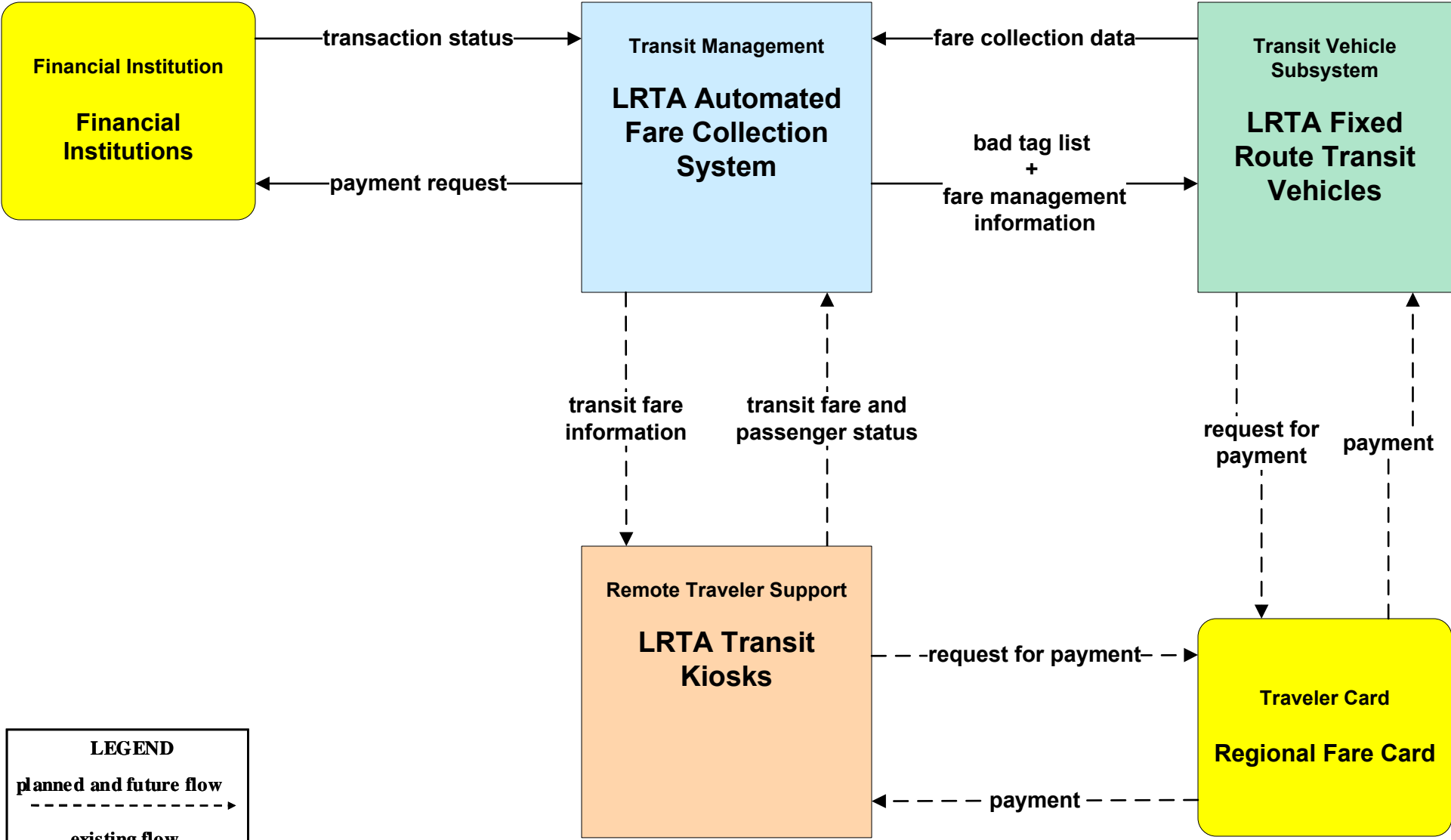
APTS02 - Transit Fixed-Route Operations LRTA



APTS03 - Demand Response Transit Operations LRTA



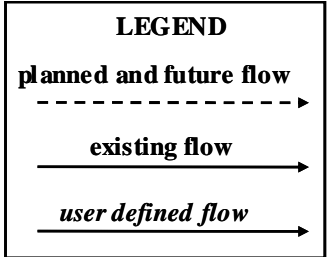
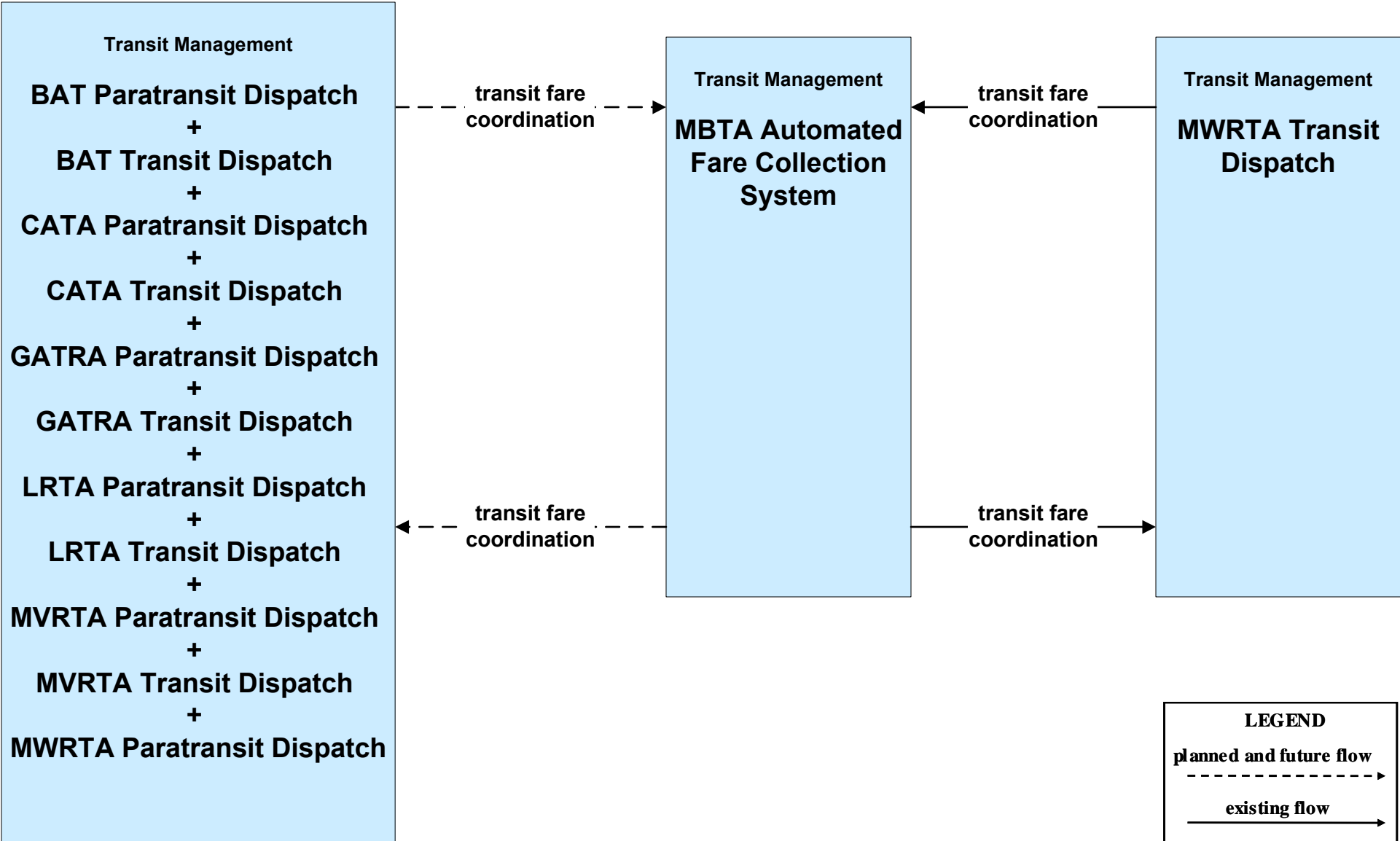
APTS04 - Transit Passenger and Fare Payment LRTA



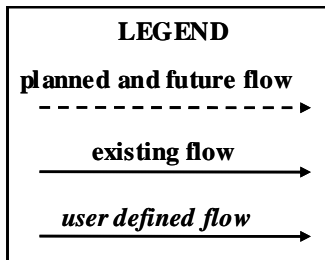
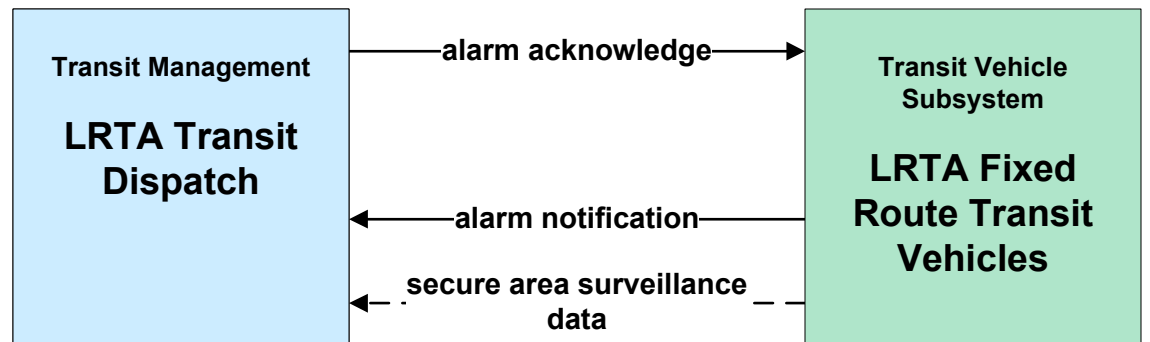
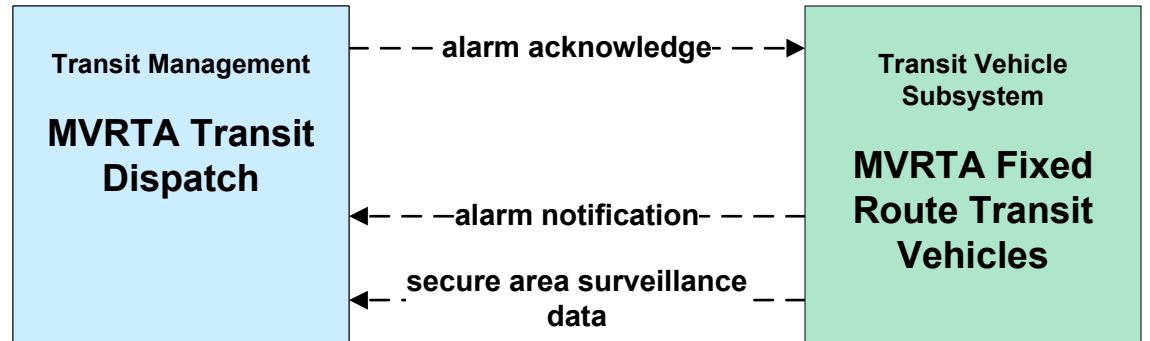
LEGEND

- planned and future flow*
- - - - ->
- existing flow*
—————>
- user defined flow*
—————>

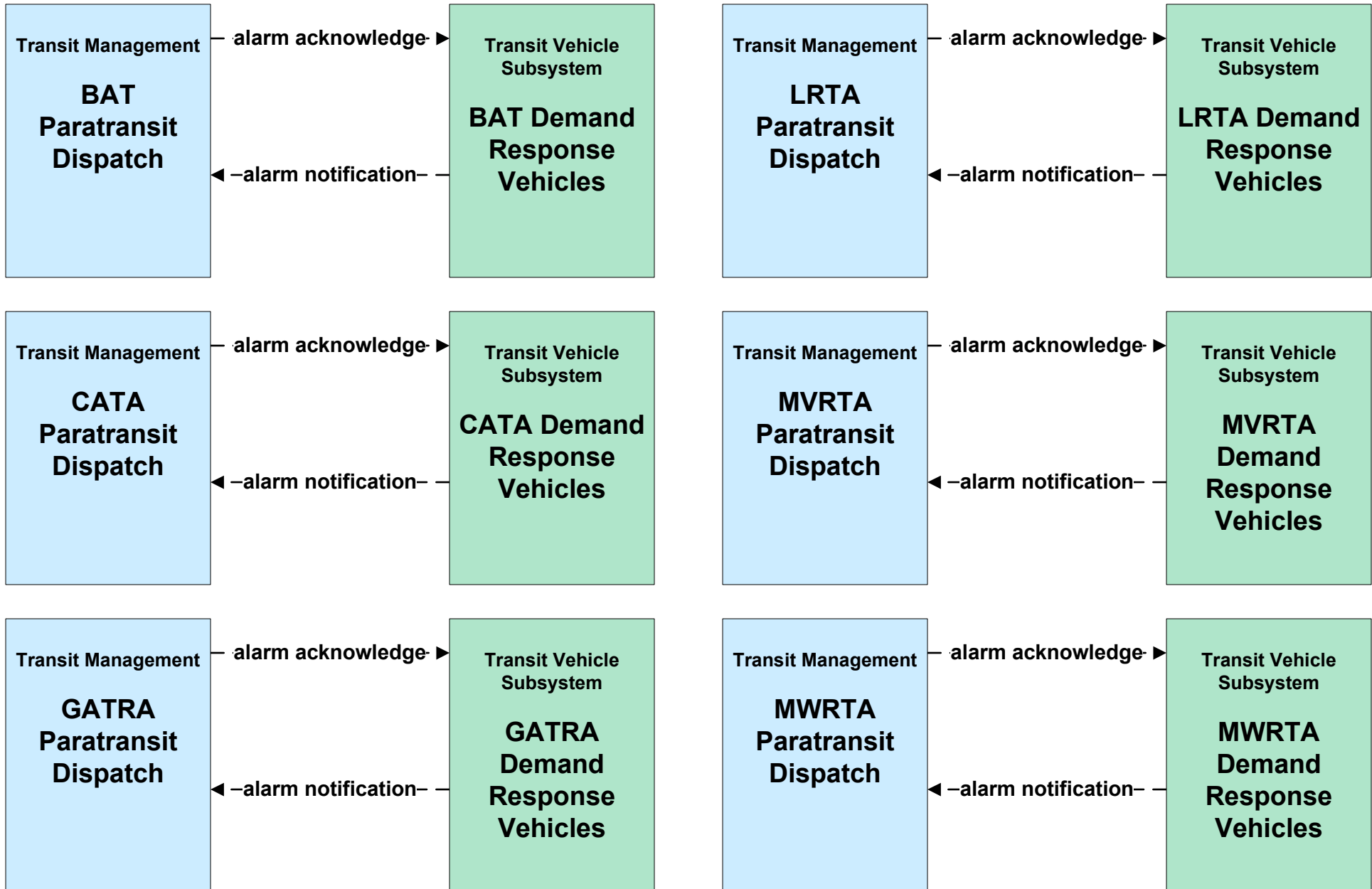
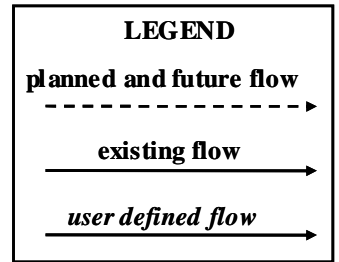
**APTS04 - Transit Passenger and Fare Payment
MBTA**



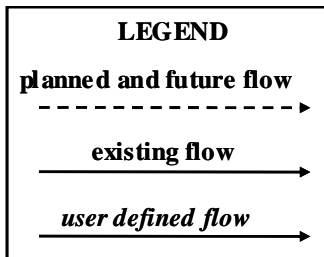
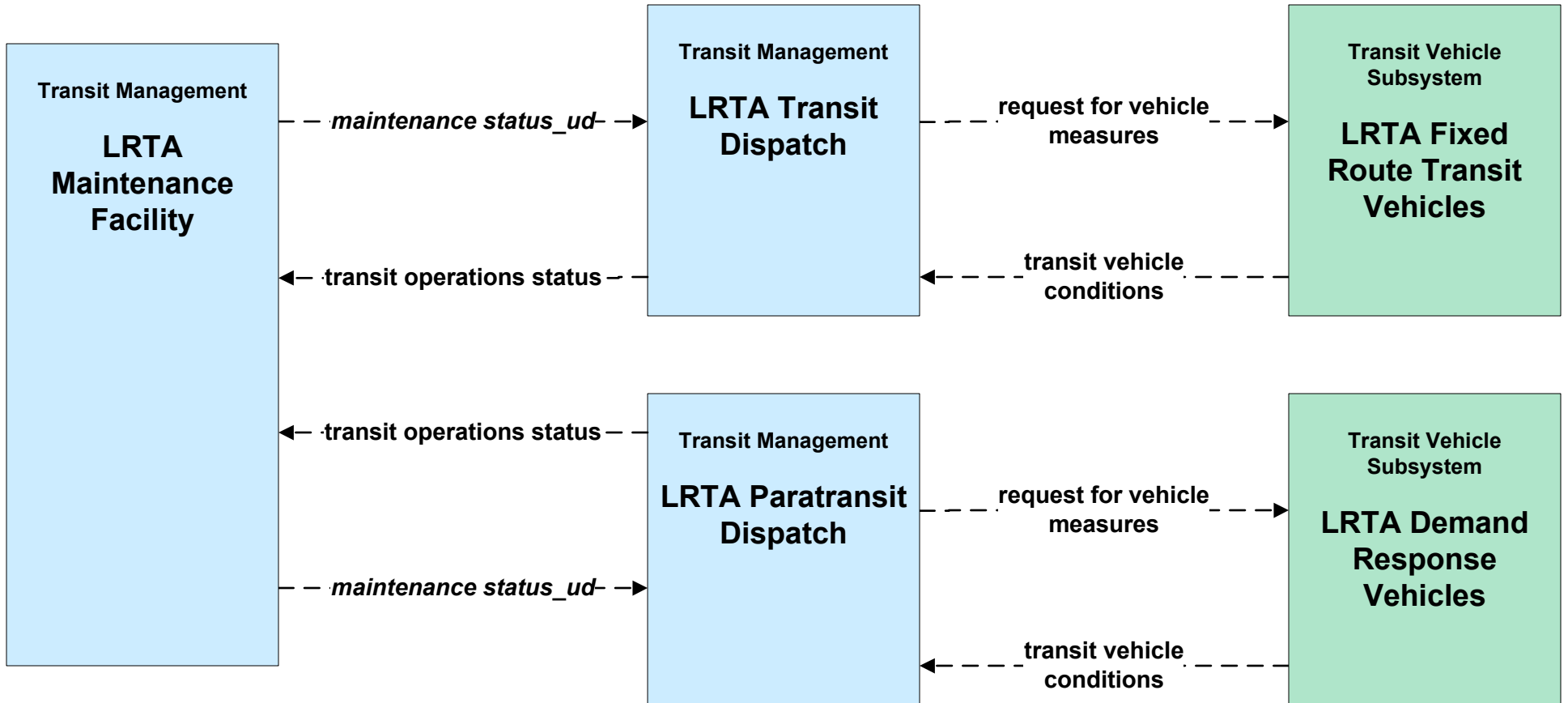
**APTS05 - Transit Security
RTA (2 of 2)**



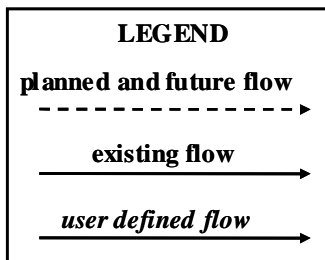
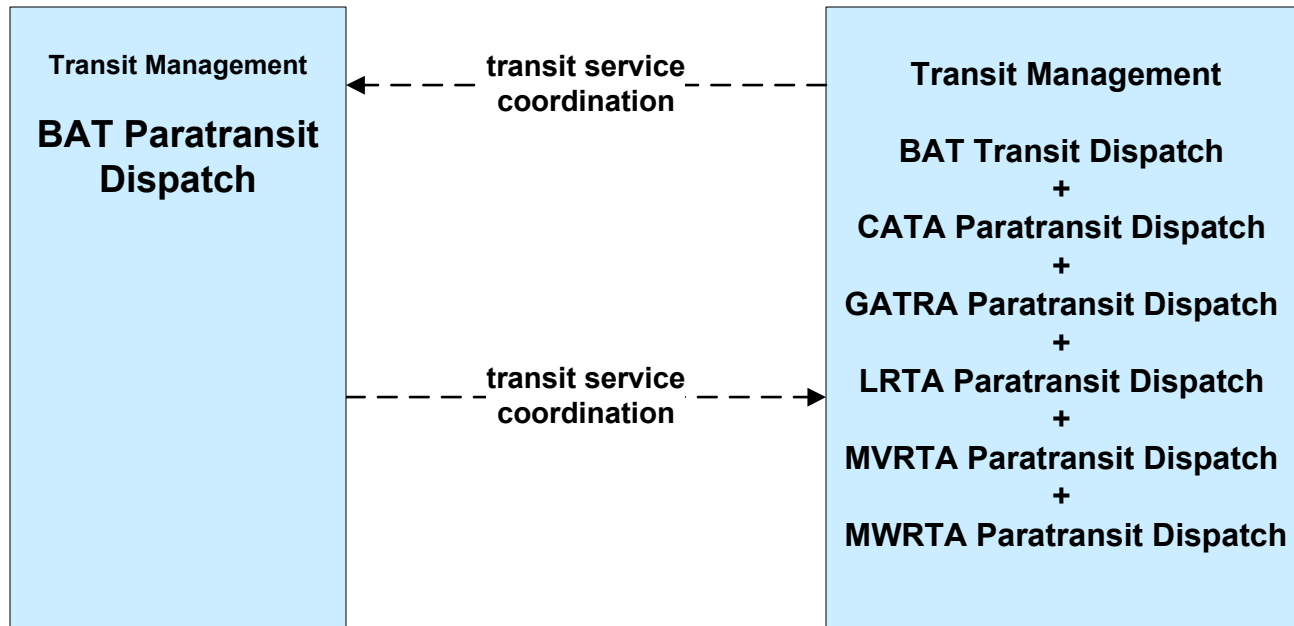
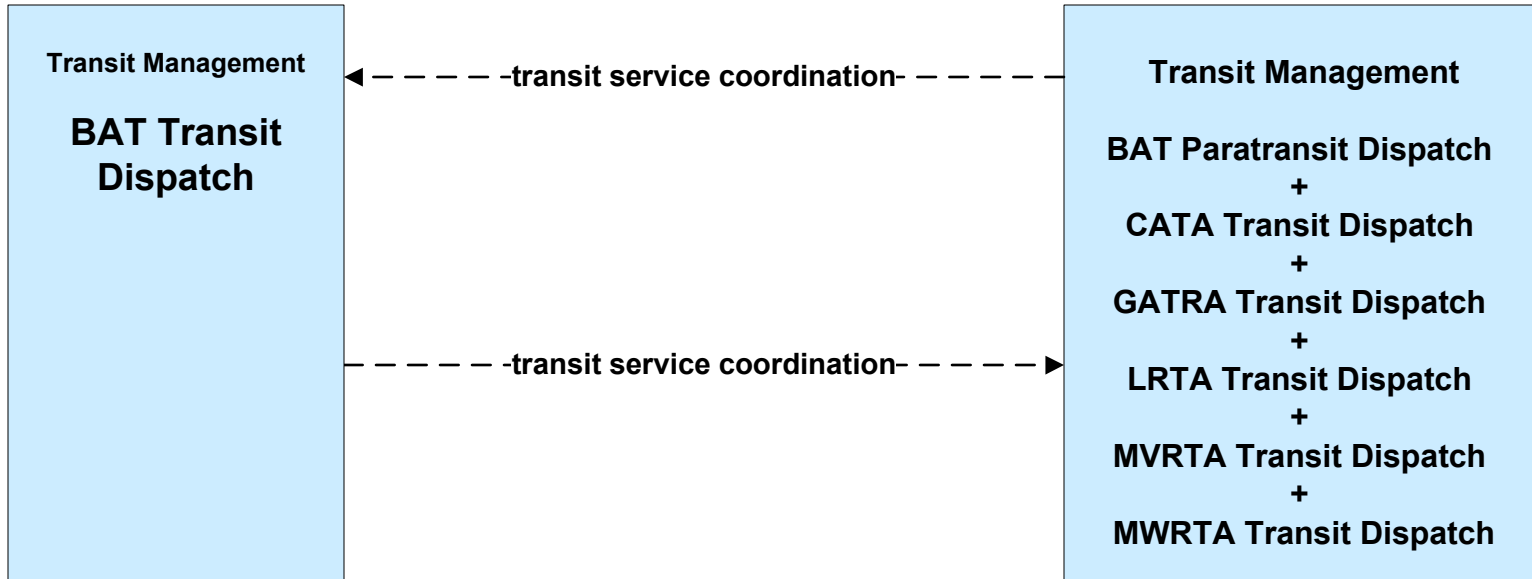
APTS05 - Transit Security RTA Paratransit



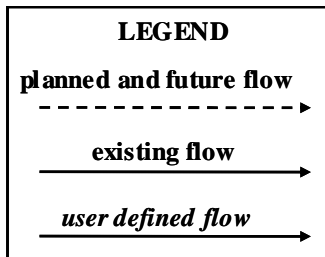
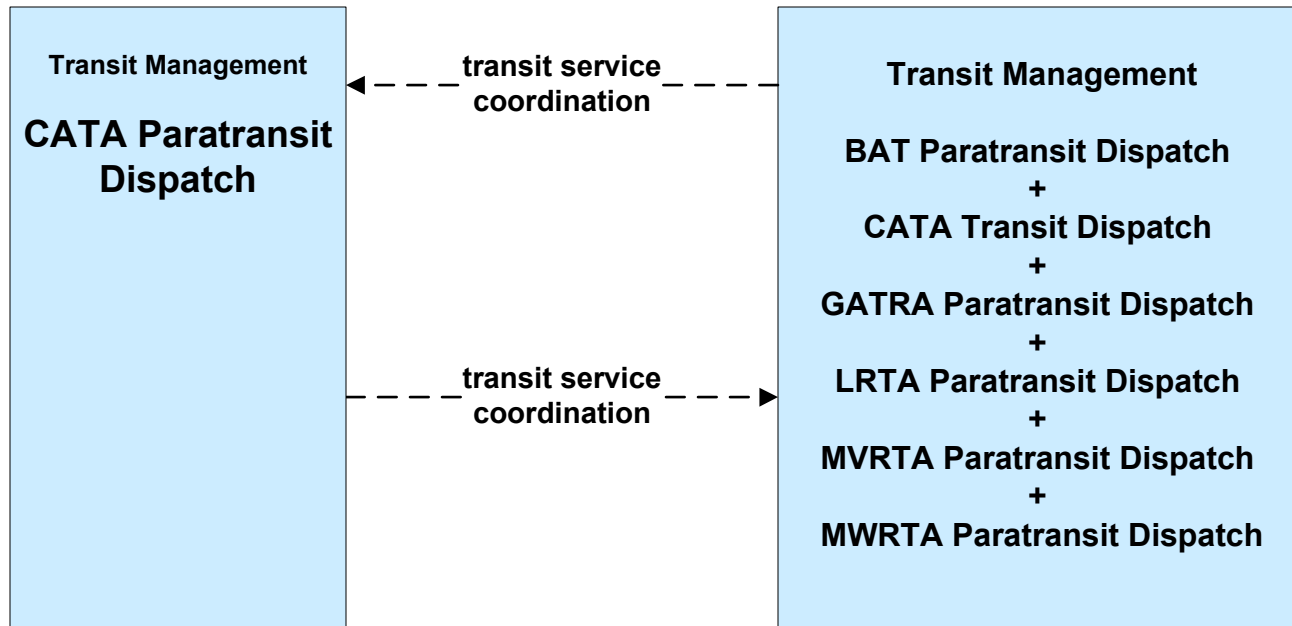
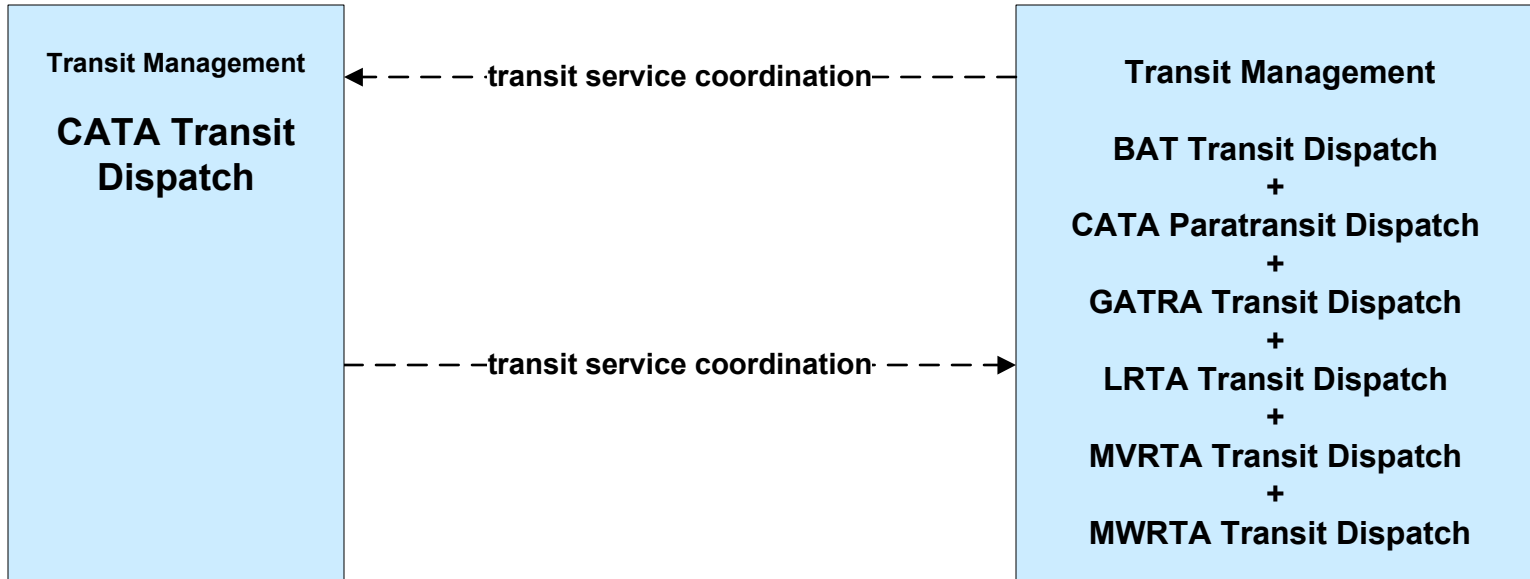
APTS06 - Transit Vehicle Maintenance LRTA



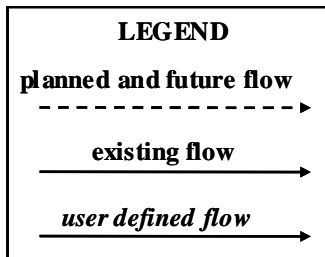
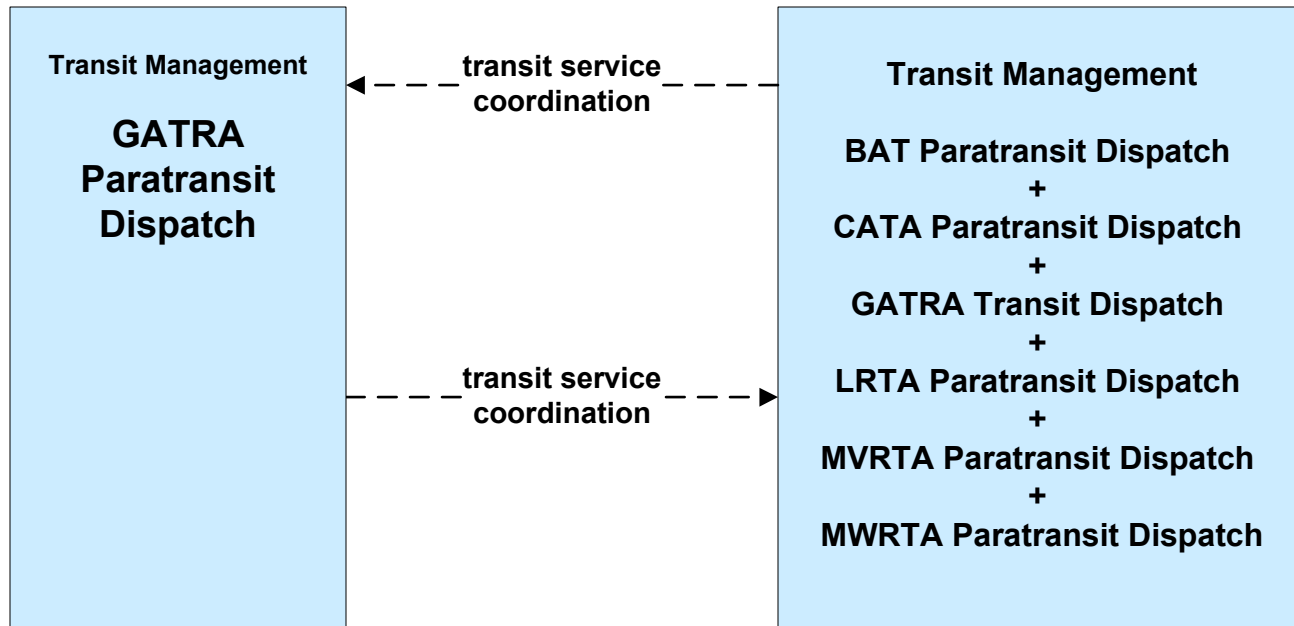
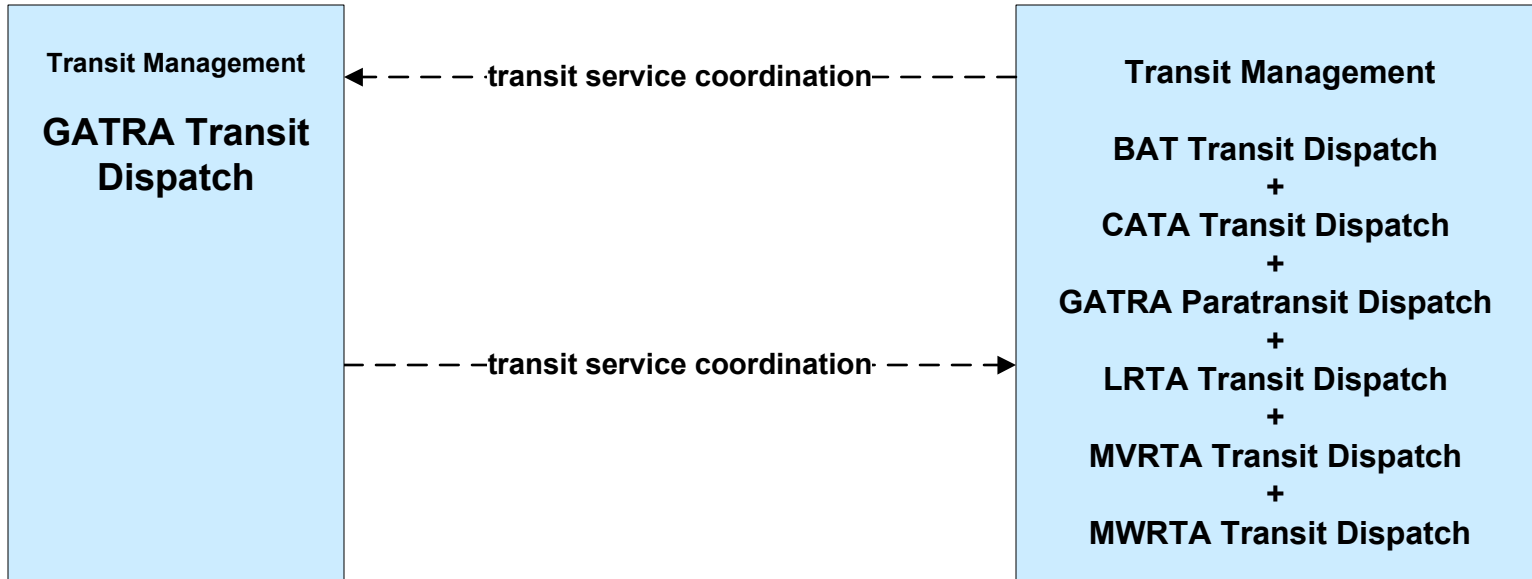
**APTS07 - Multimodal Coordination
BAT**



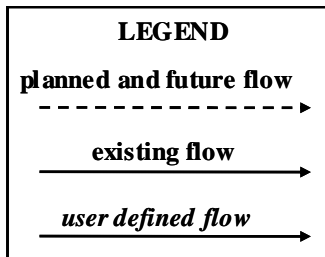
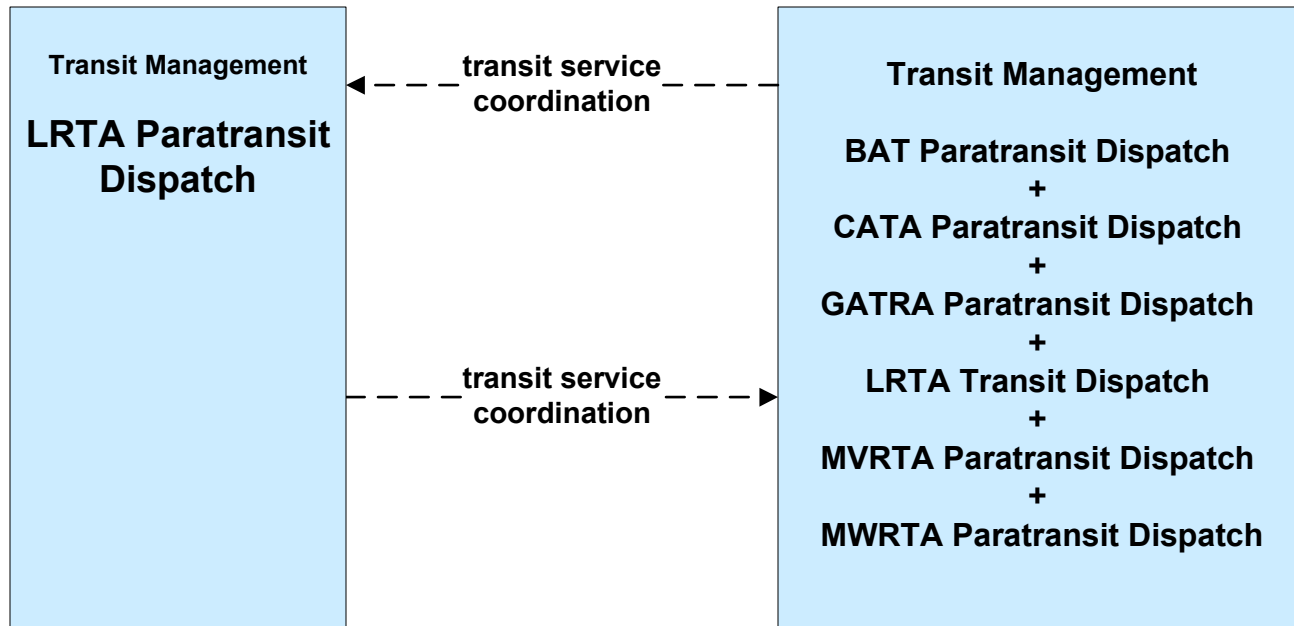
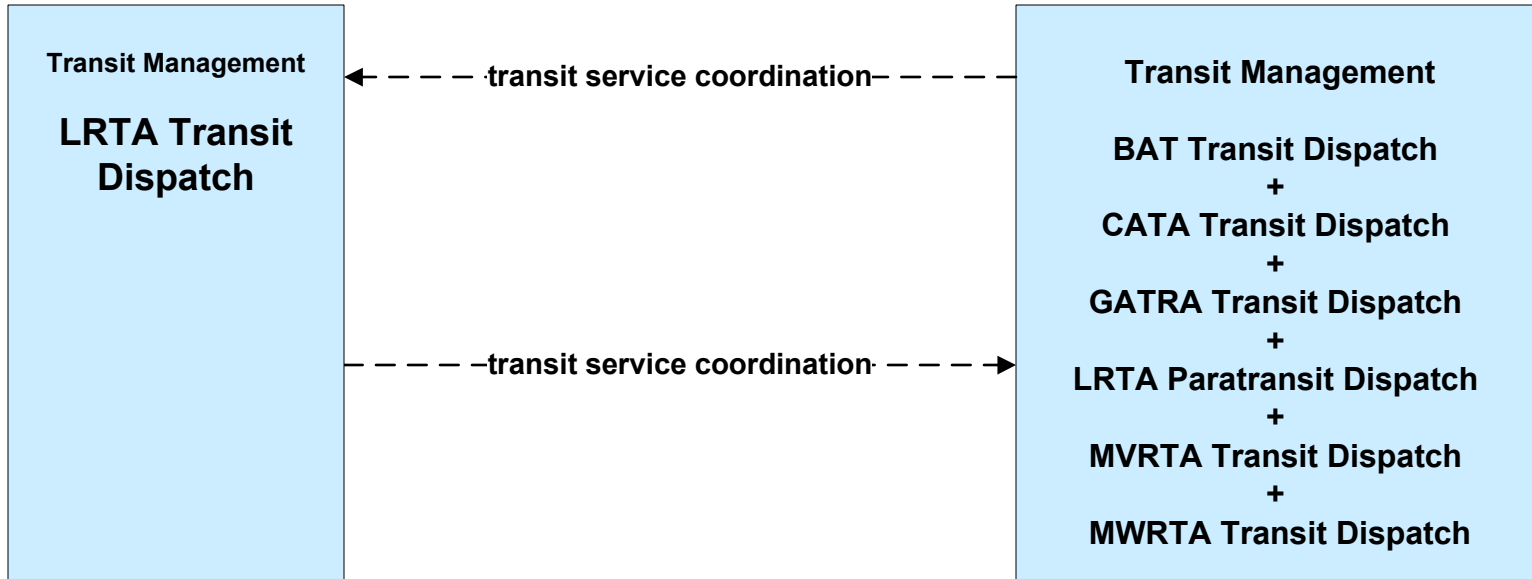
**APTS07 - Multimodal Coordination
CATA**



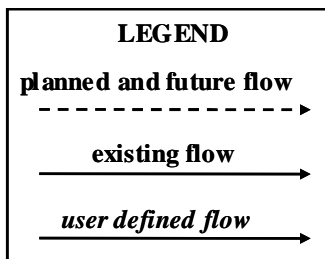
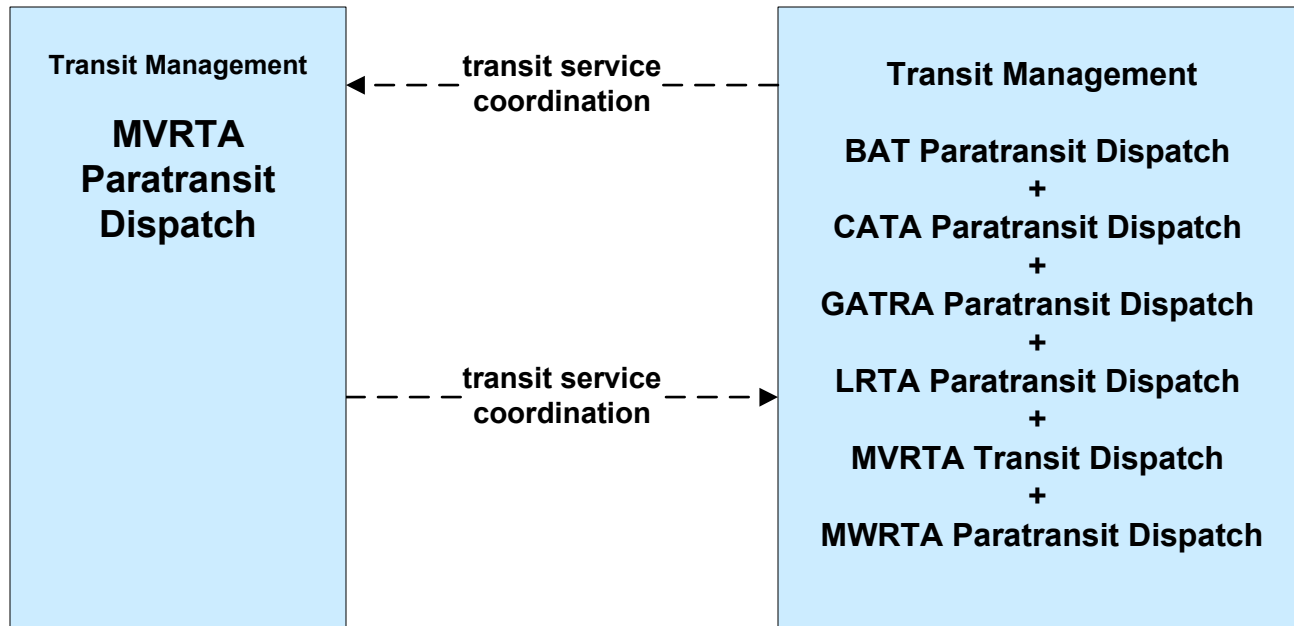
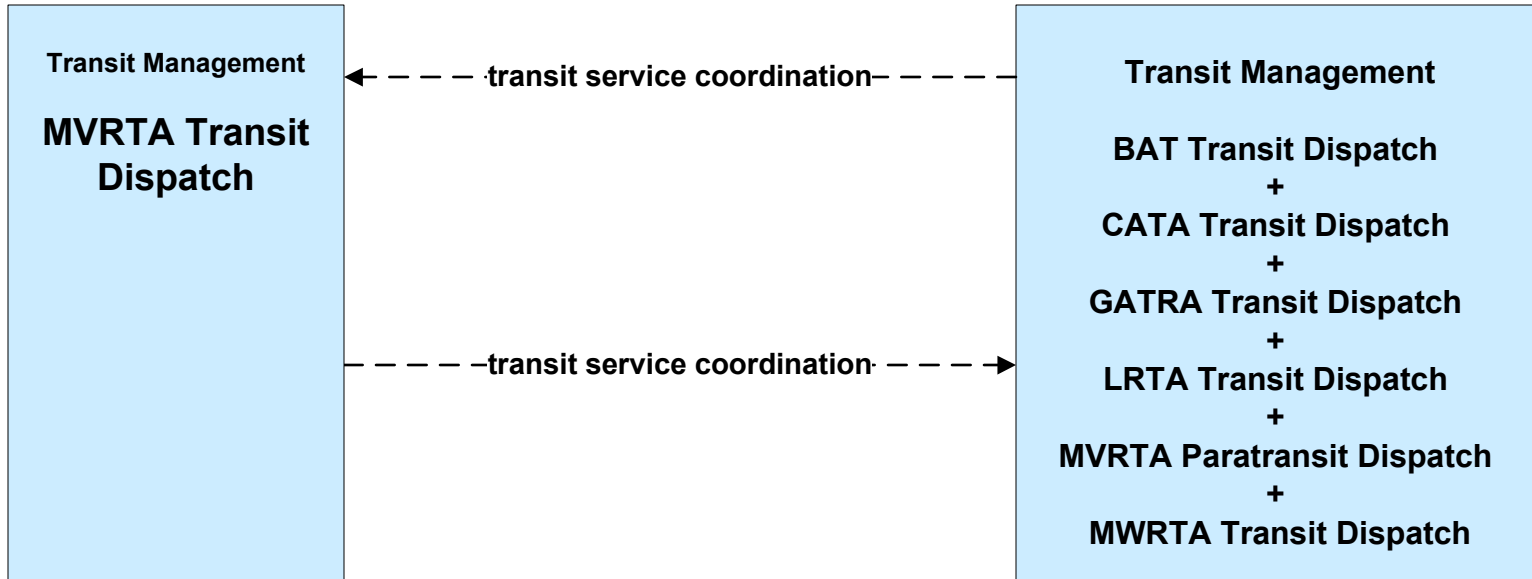
**APTS07 - Multimodal Coordination
GATRA**



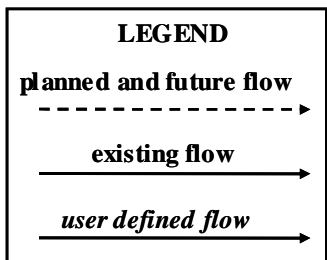
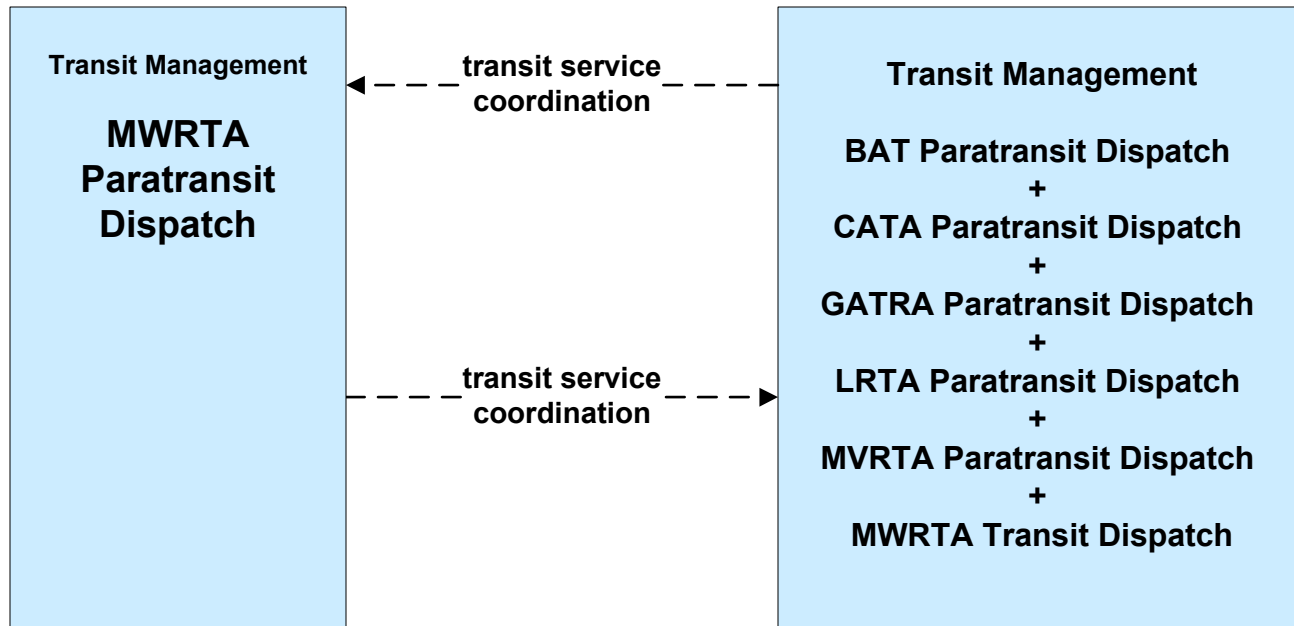
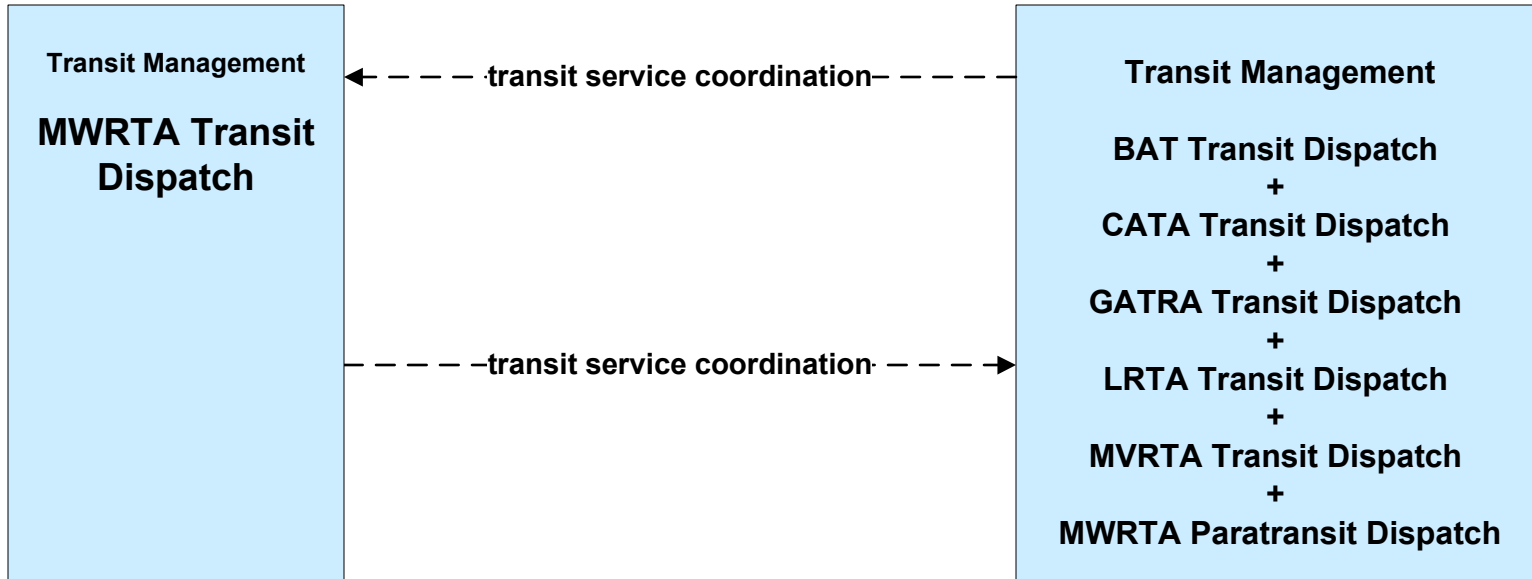
**APTS07 - Multimodal Coordination
LRTA**



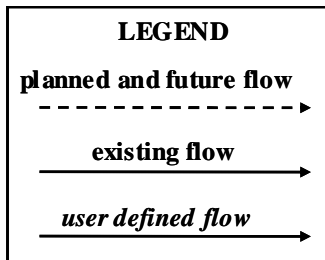
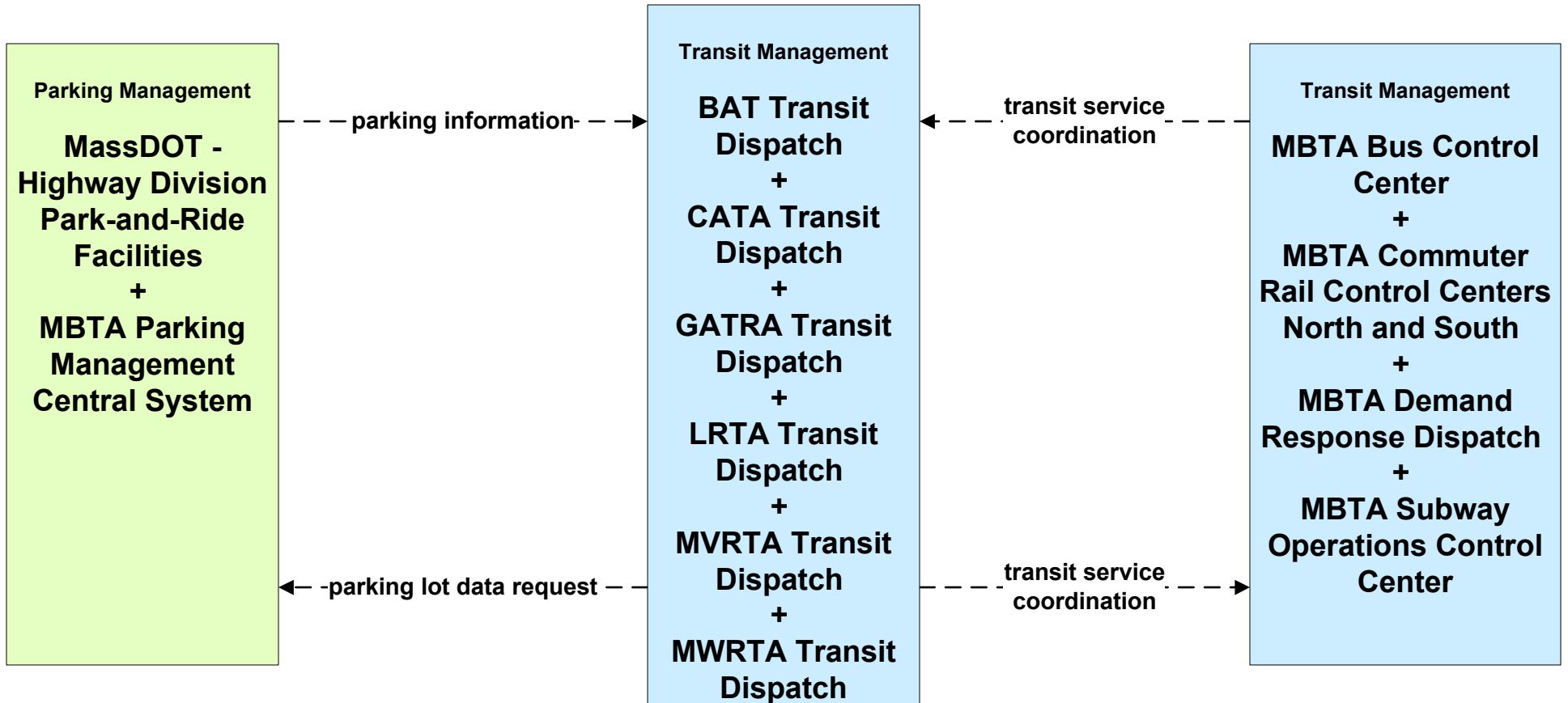
**APTS07 - Multimodal Coordination
MVRTA**



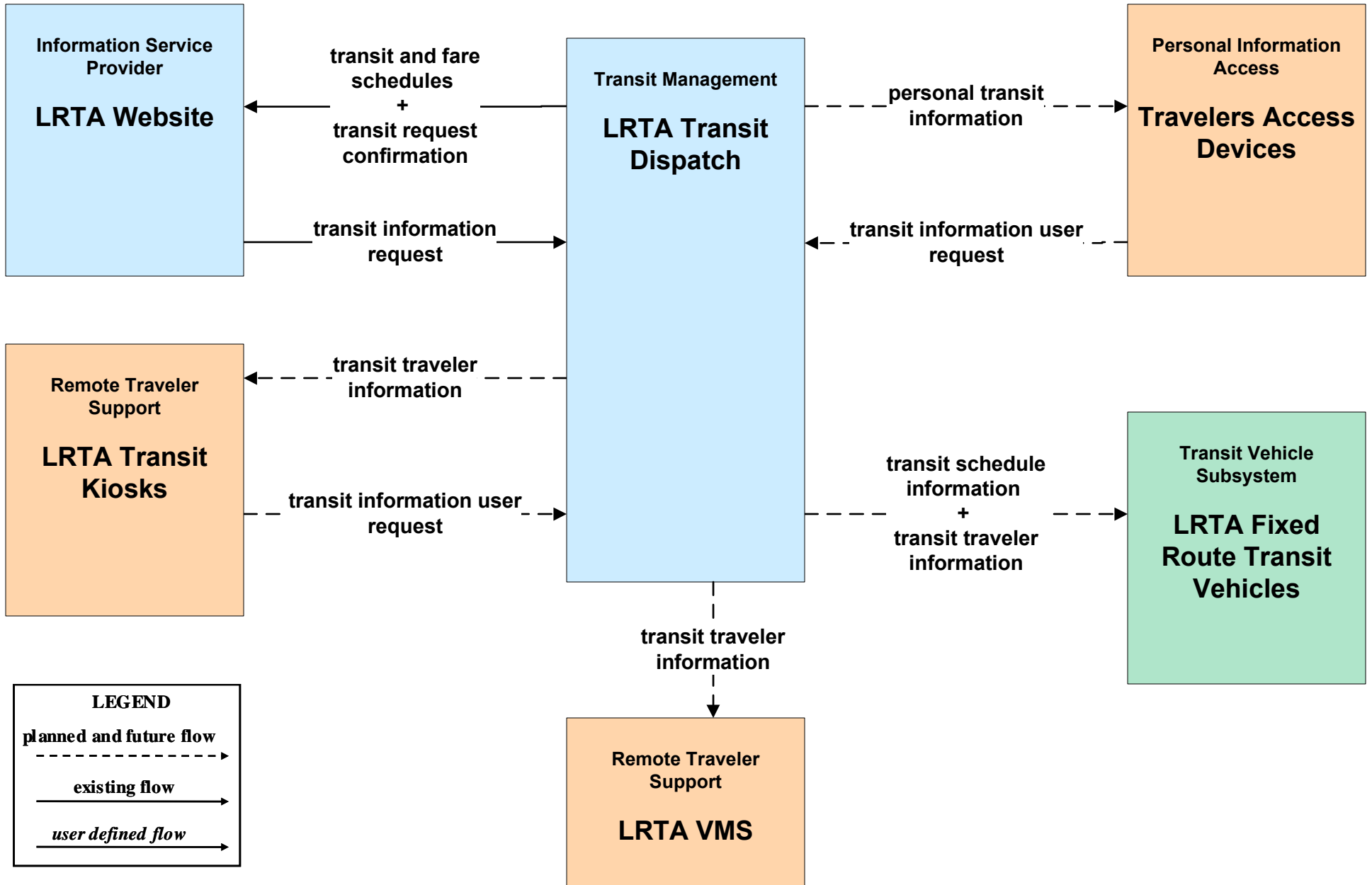
**APTS07 - Multimodal Coordination
MWRTA**



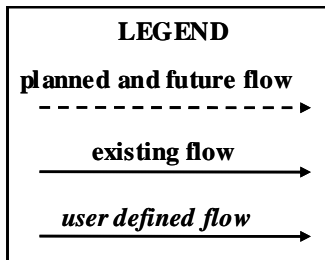
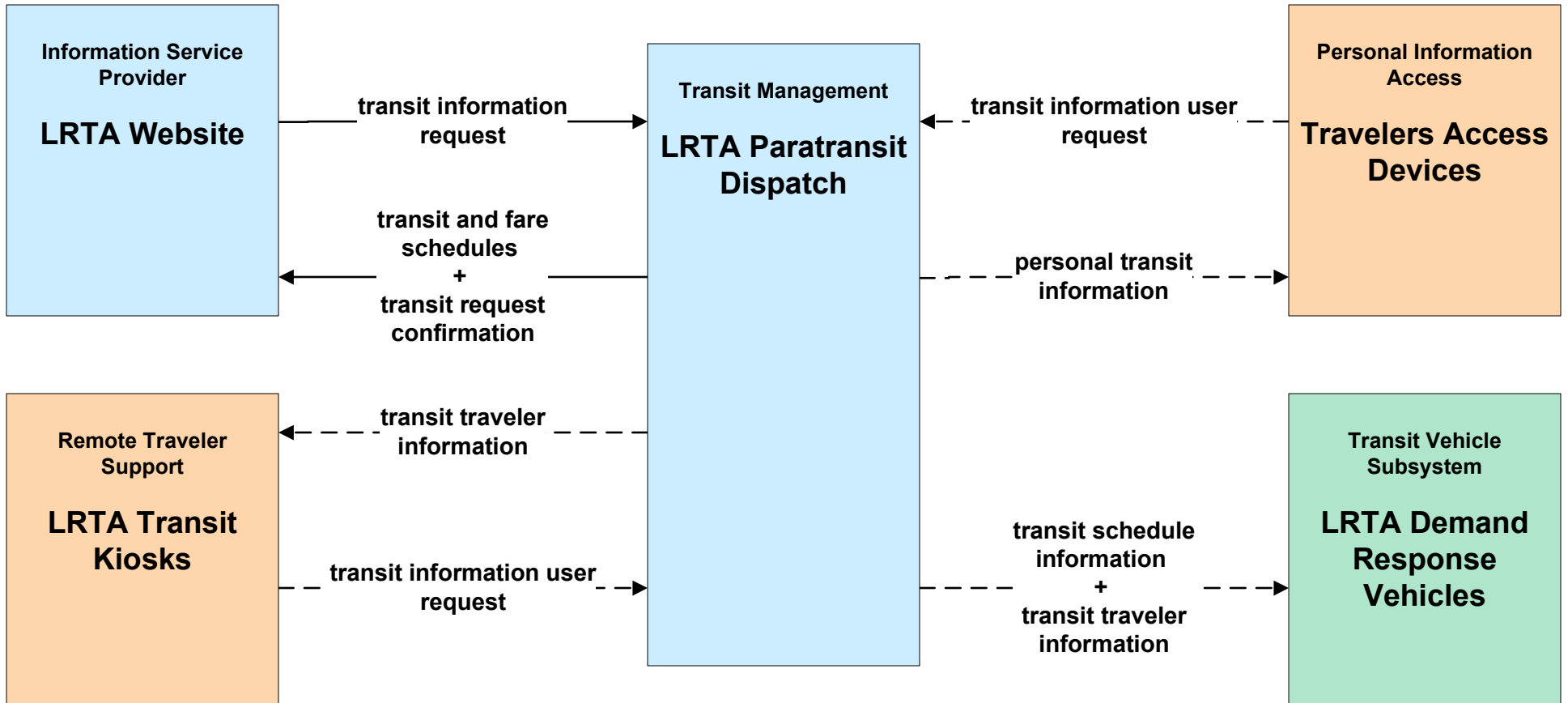
**APTS07 - Multimodal Coordination
RTA**



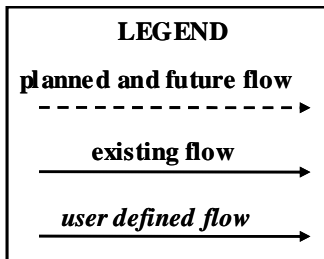
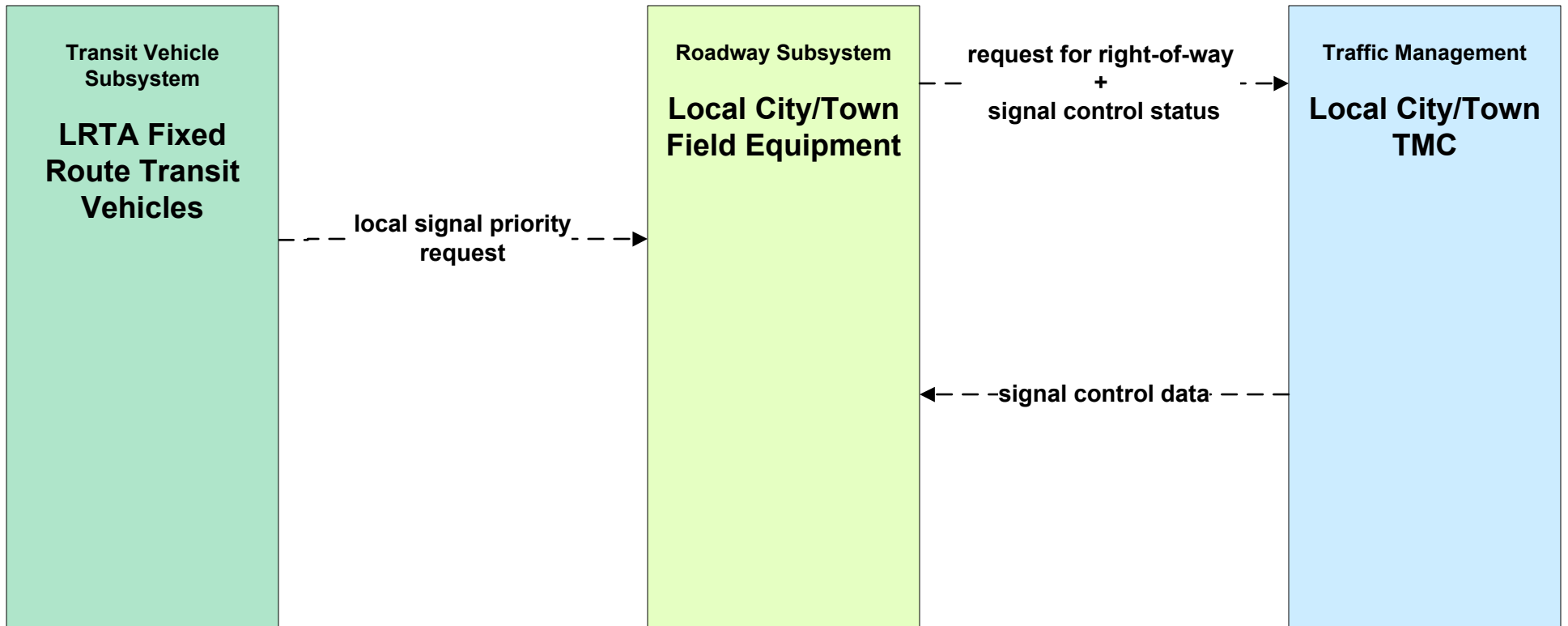
**APTS08 - Transit Traveler Information
LRTA (1 of 2)**



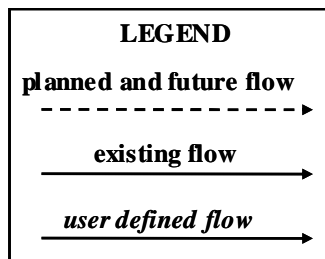
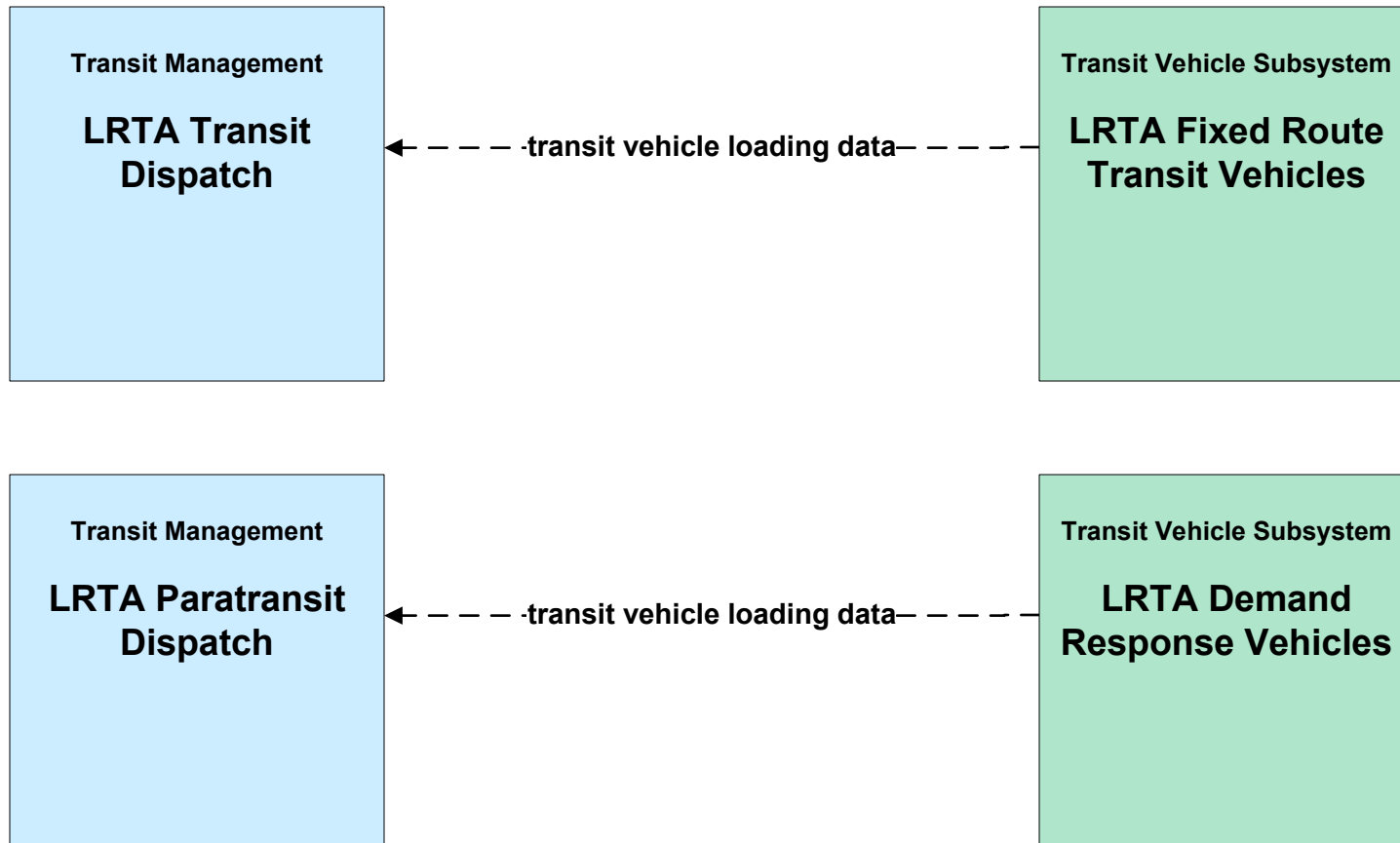
**APTS08 - Transit Traveler Information
LRTA (2 of 2)**



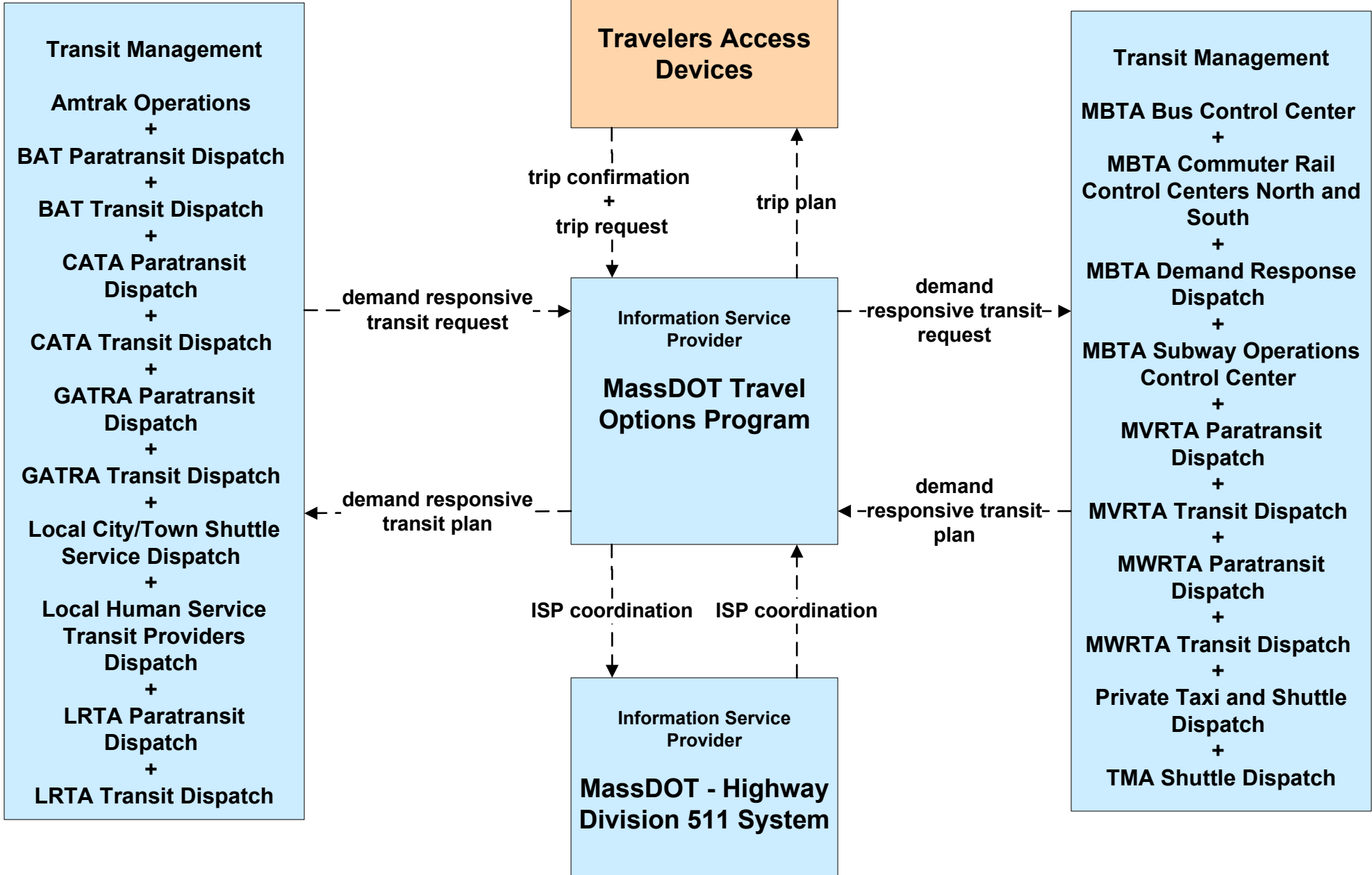
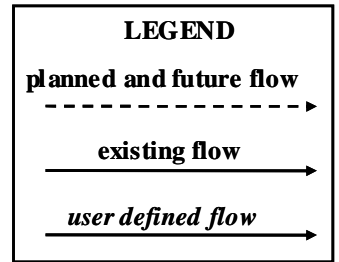
APTS09 - Transit Signal Priority LRTA



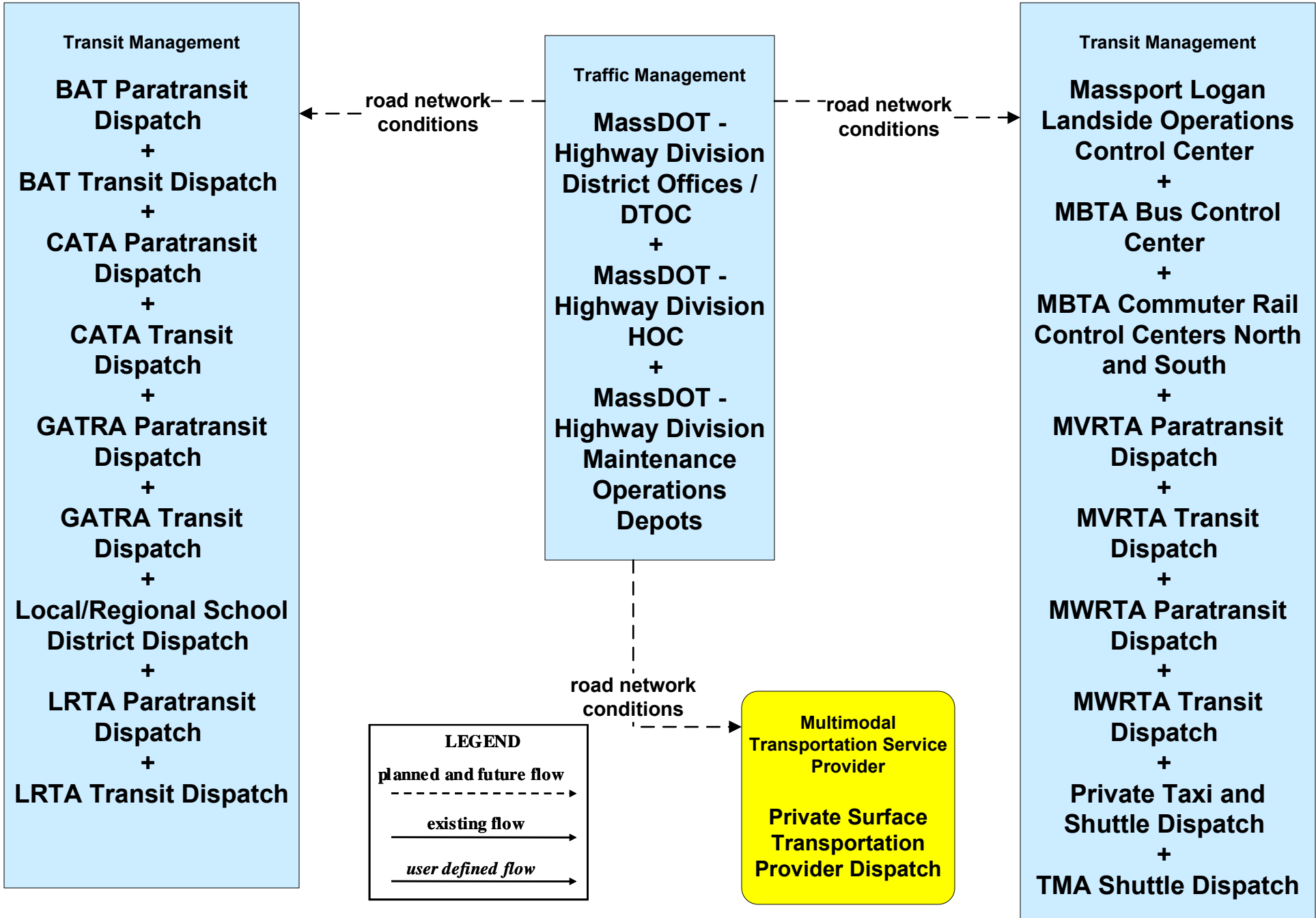
APTS10 - Transit Passenger Counting LRTA



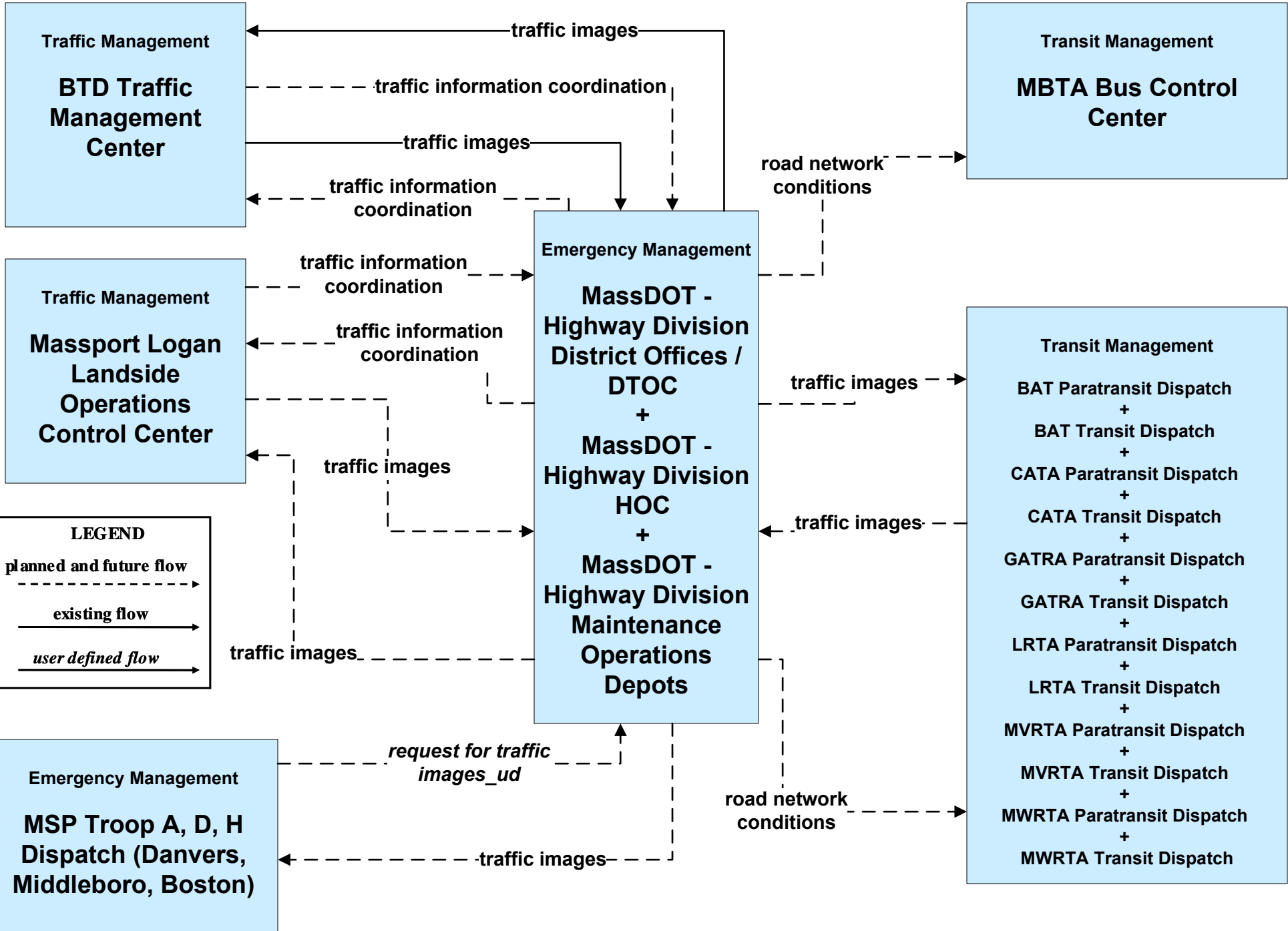
ATIS08 - Dynamic Ridesharing MassDOT Travel Options Program



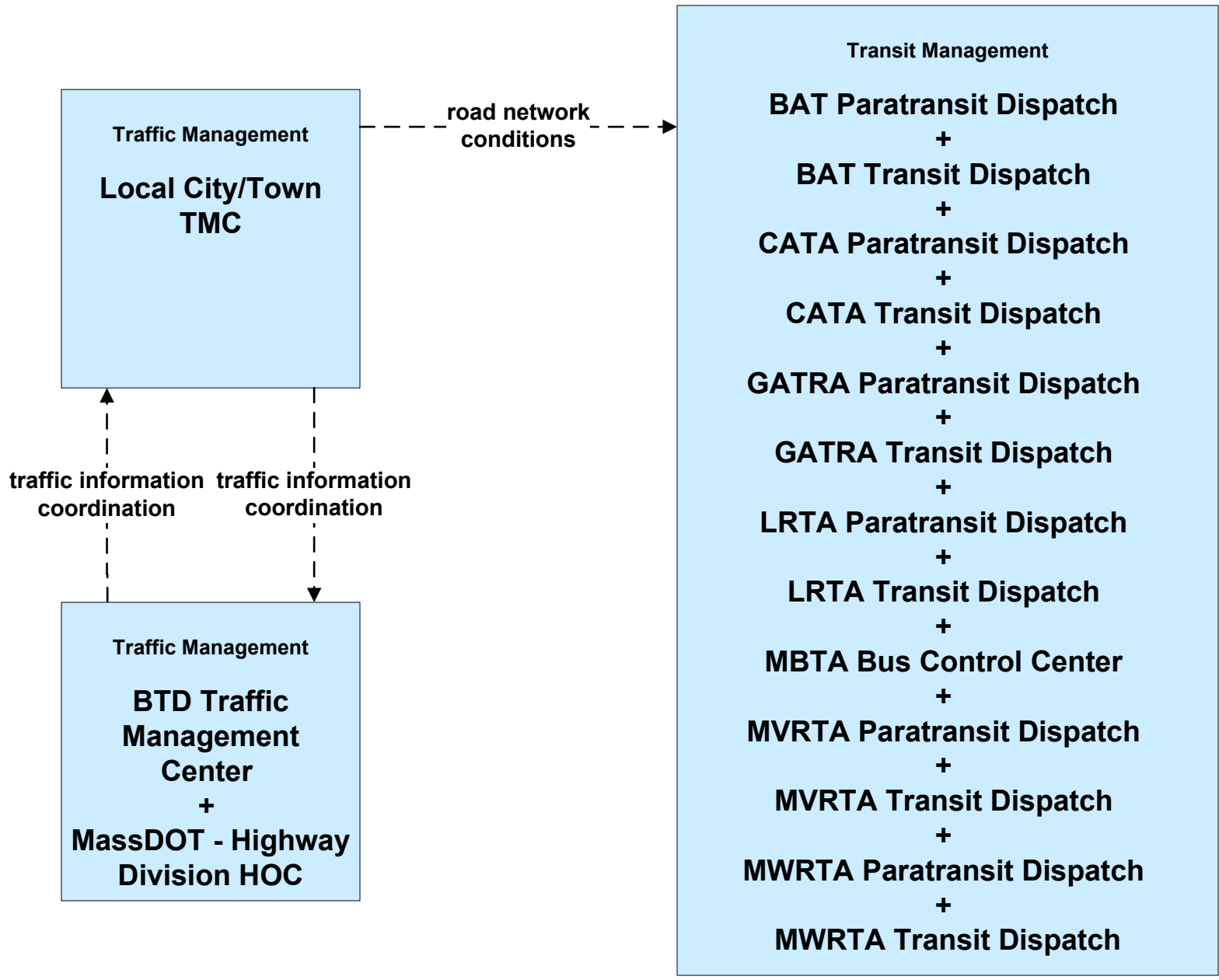
**ATMS06 - Traffic Information Dissemination
MassDOT - Highway Division (2 of 2)**



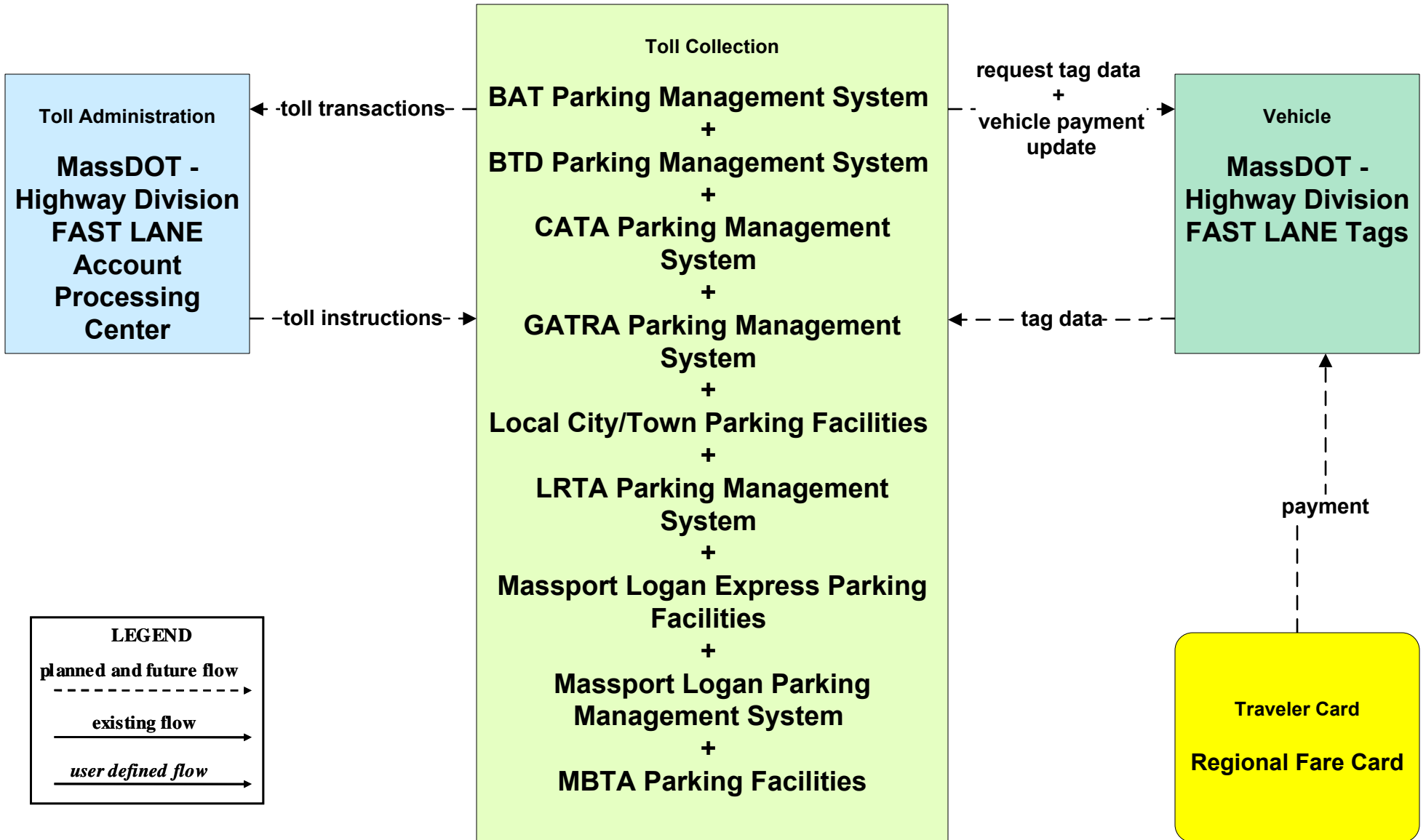
**ATMS07 - Regional Traffic Control
MassDOT - Highway Division (2 of 2)**



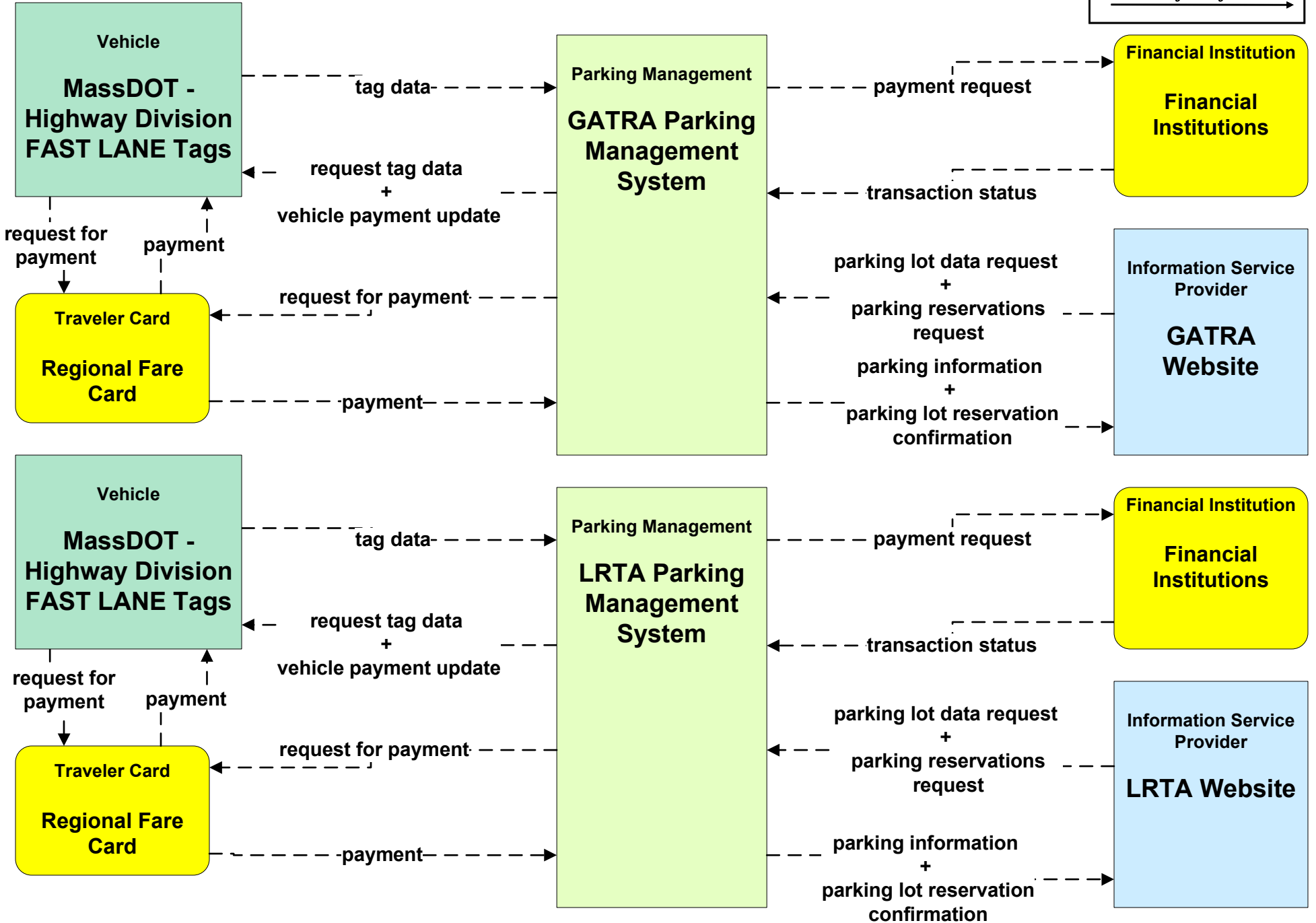
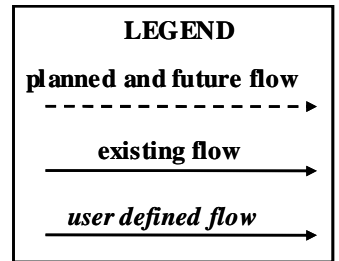
**ATMS07 - Regional Traffic Control
Local Cities/Towns**



**ATMS10 - Electronic Toll Collection
MassDOT - Highway Division (2 of 3)**

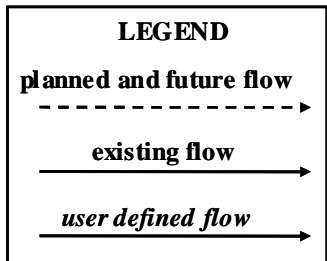
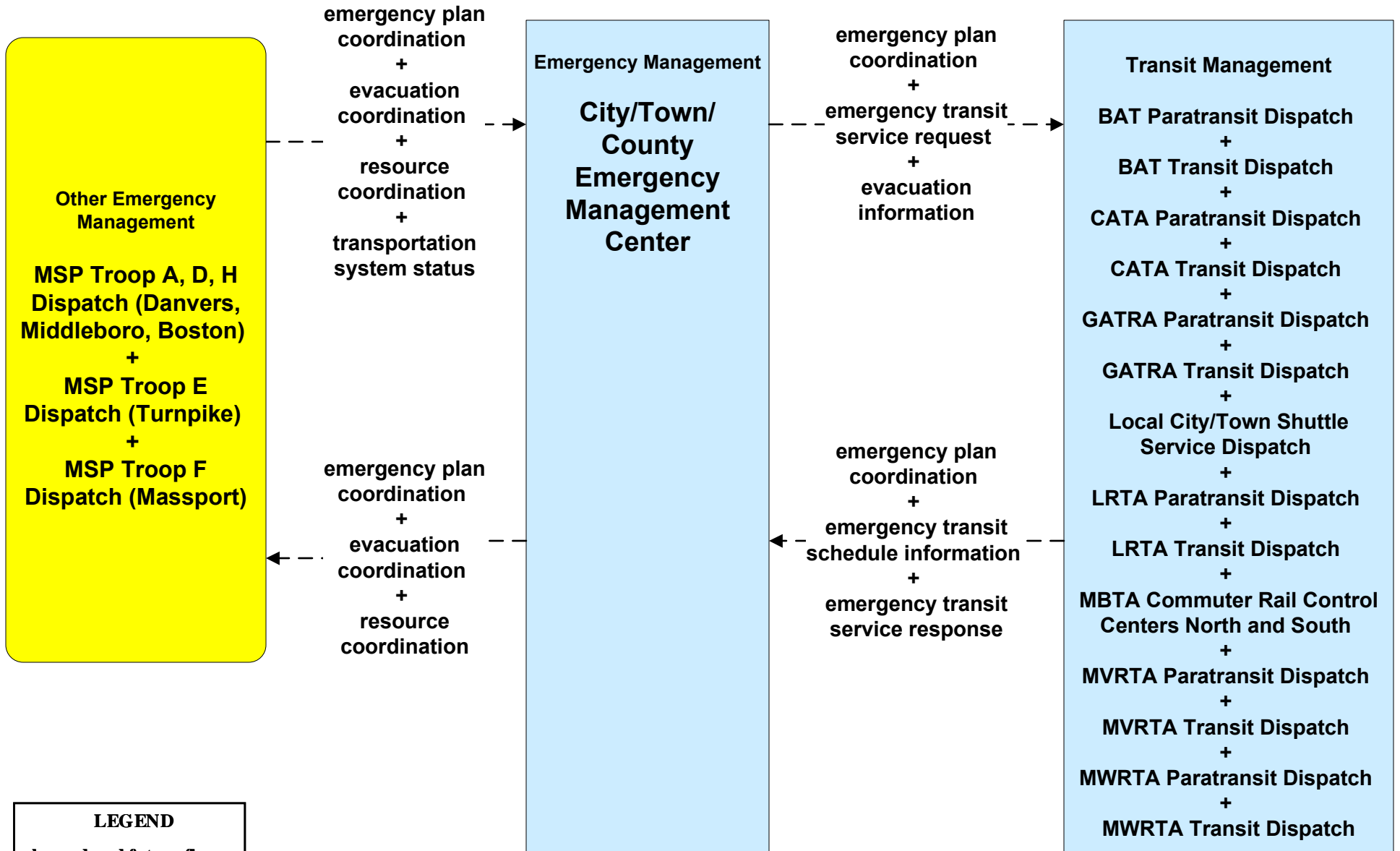


ATMS16 - Parking Facility Management RTA (2 of 2)

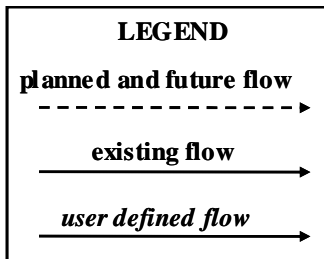


EM08 - Disaster Response

City/Town/County Emergency Management Center (2 of 2)



**EM09 - Evacuation and Reentry Management
City/Town/County Emergency Management Center (2 of 2)**



**MC04 - Weather Information Processing and Distribution
Private and National Weather Services (1 of 2)**

