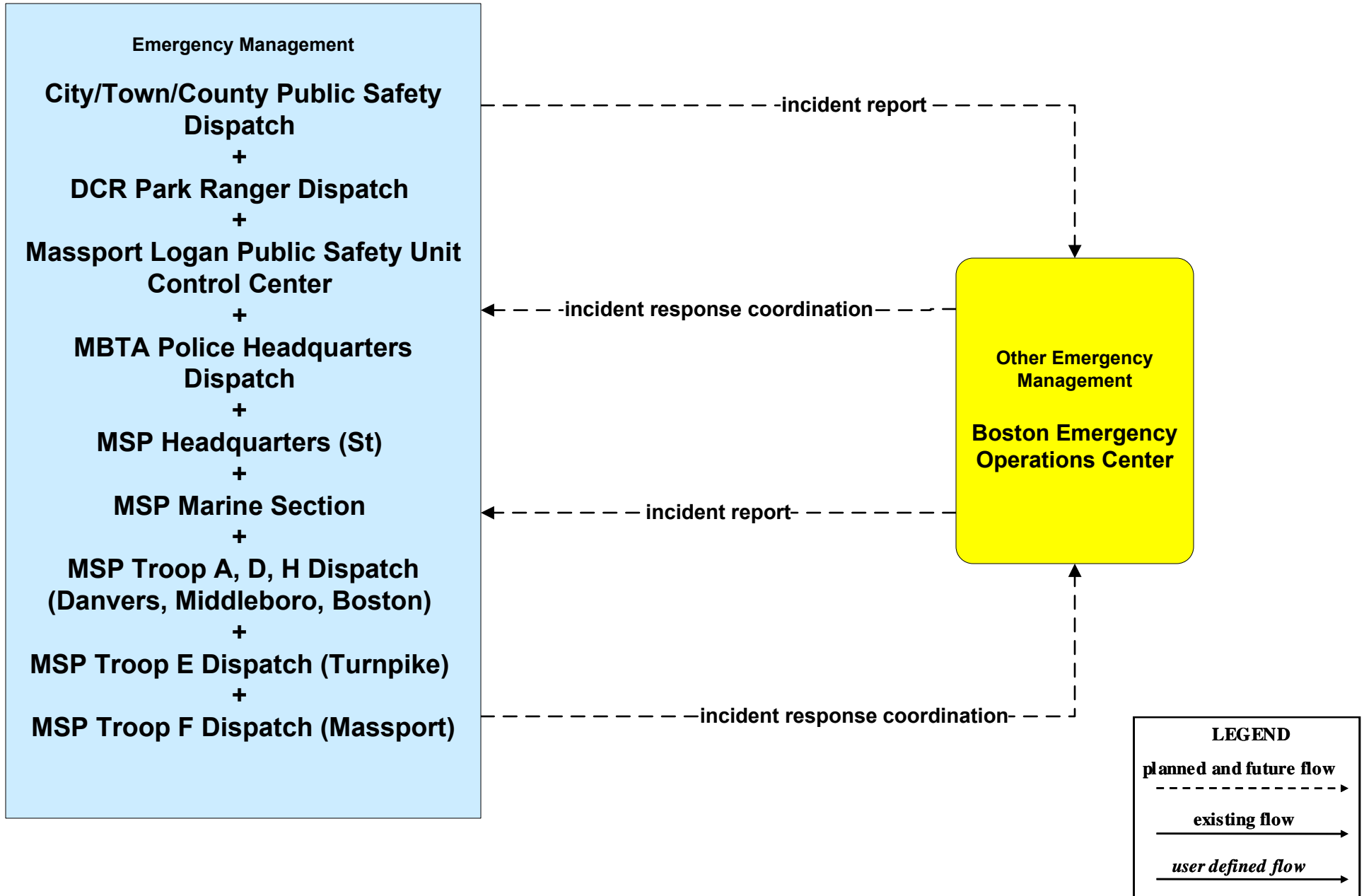


Metropolitan Boston Regional ITS Architecture

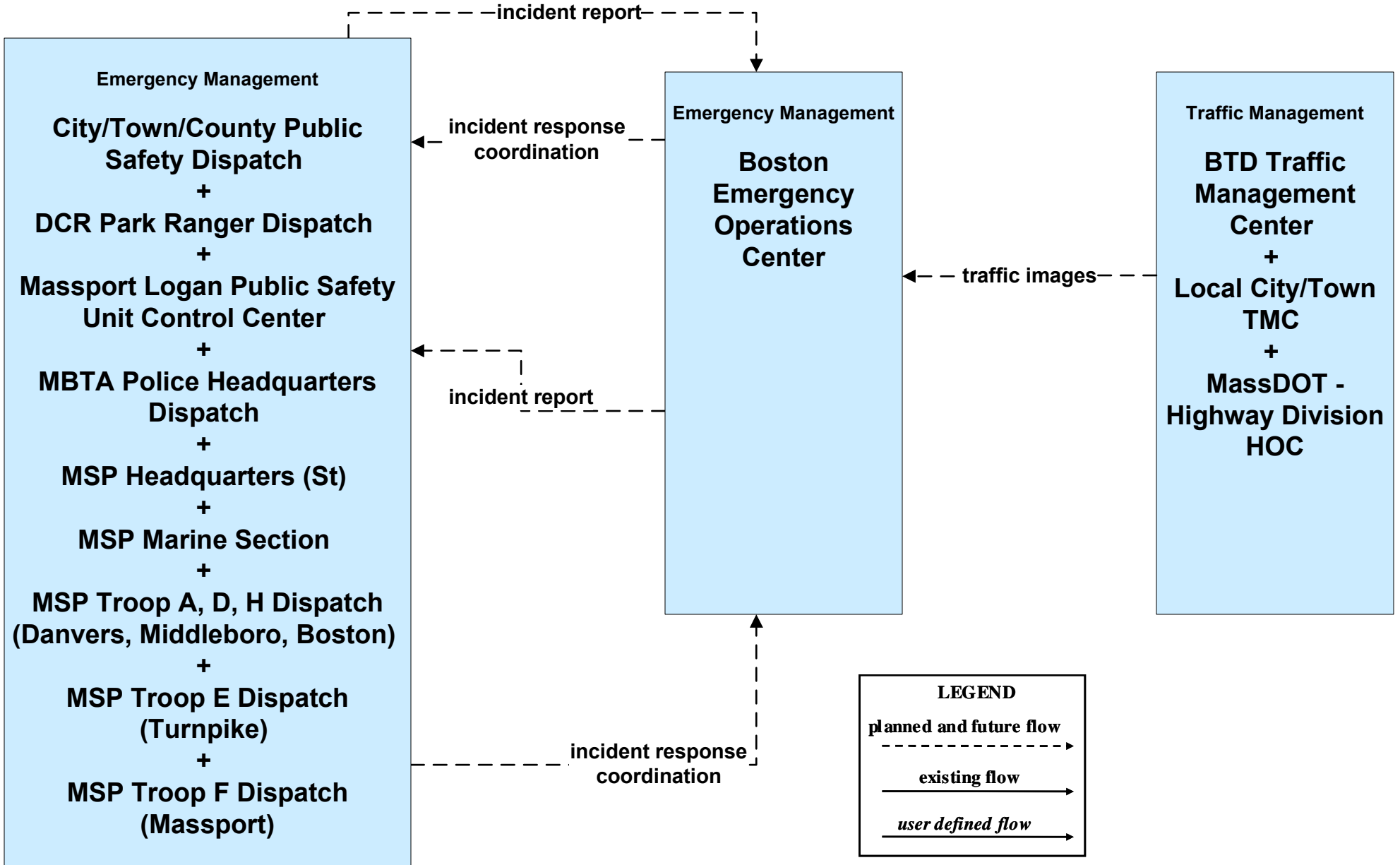
Customized Market Package Diagrams

Emergency Management (EM)

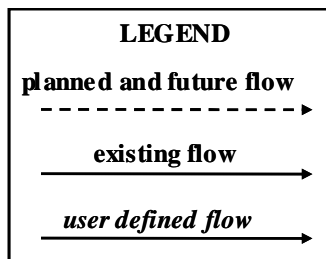
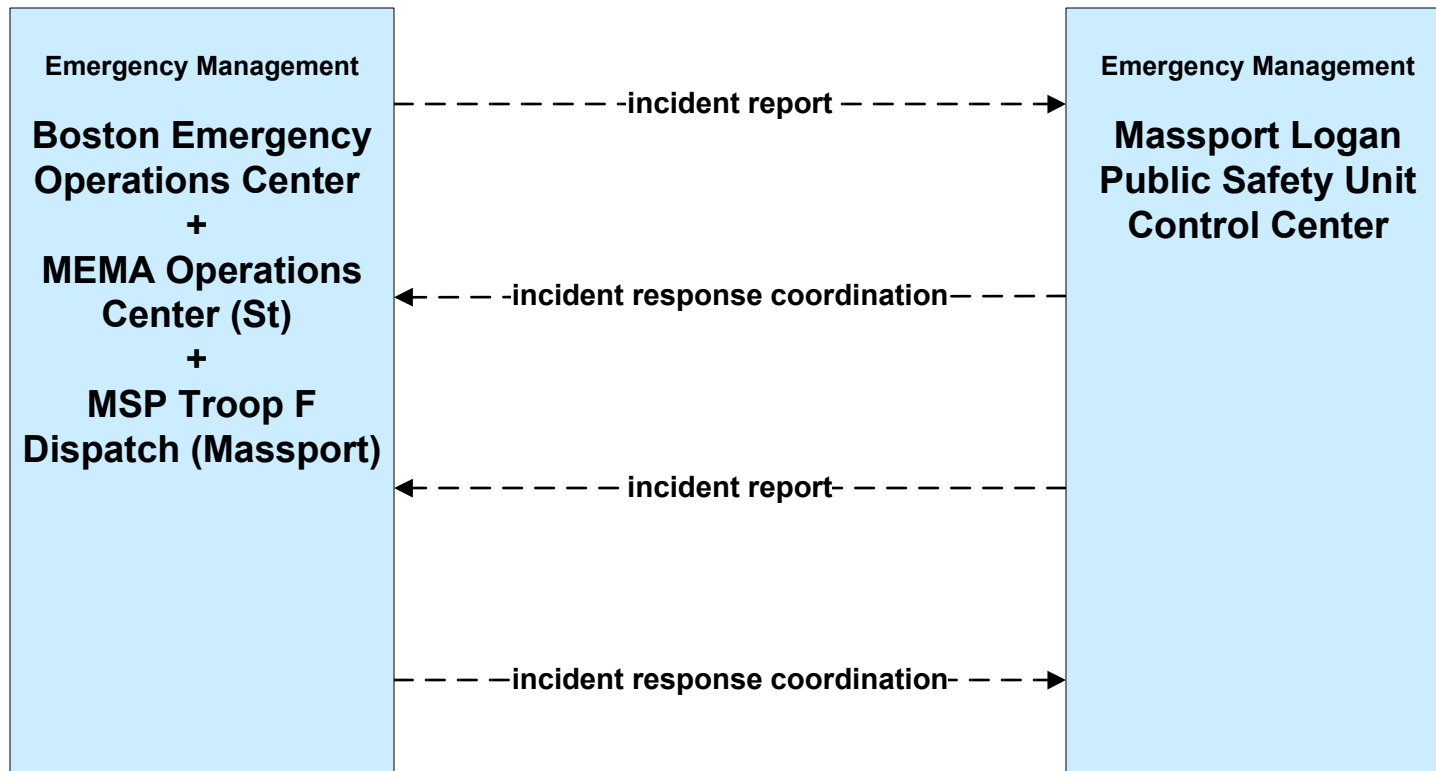
**EM01 - Emergency Response Coordination
PSNA Network**



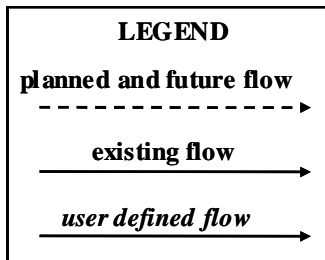
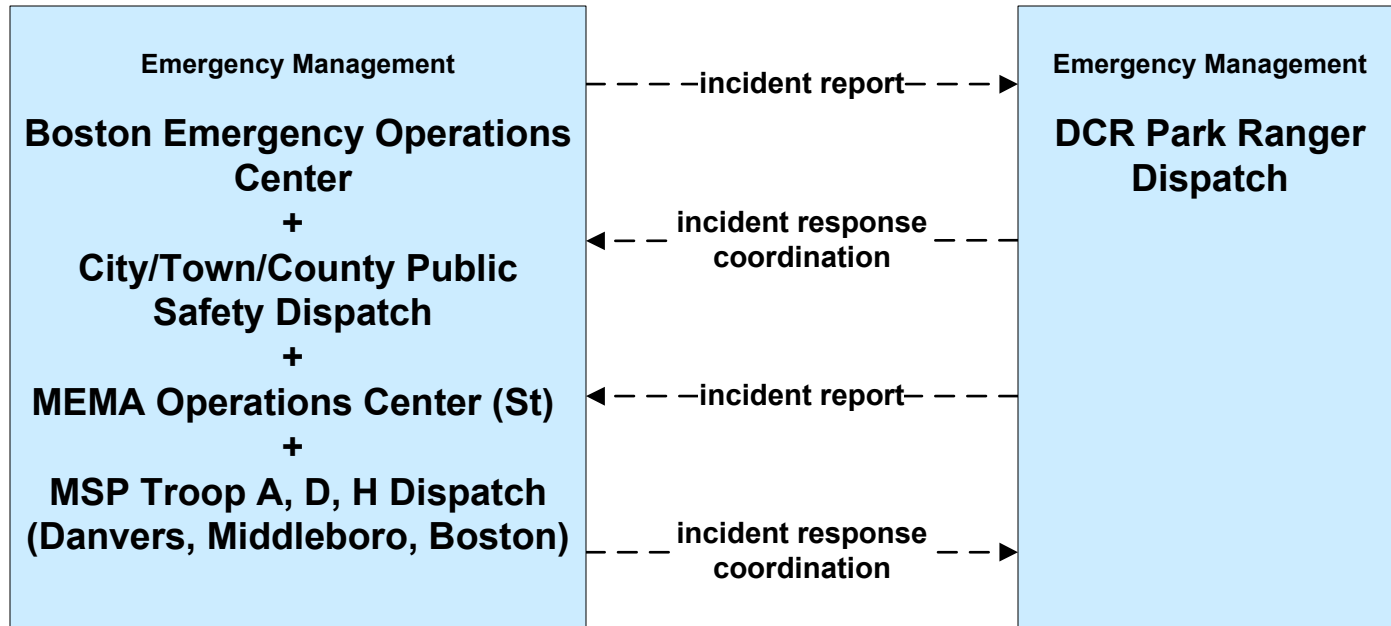
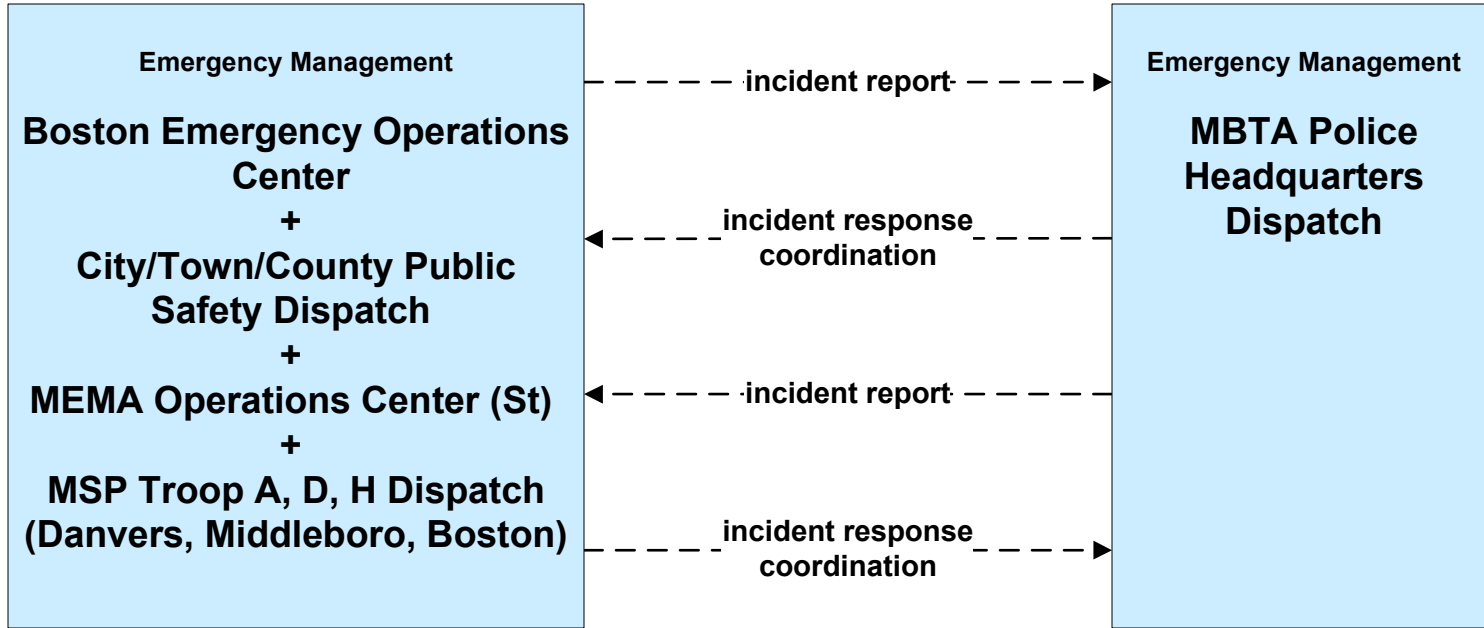
**EM01 - Emergency Response Coordination
Boston Emergency Operations Center**



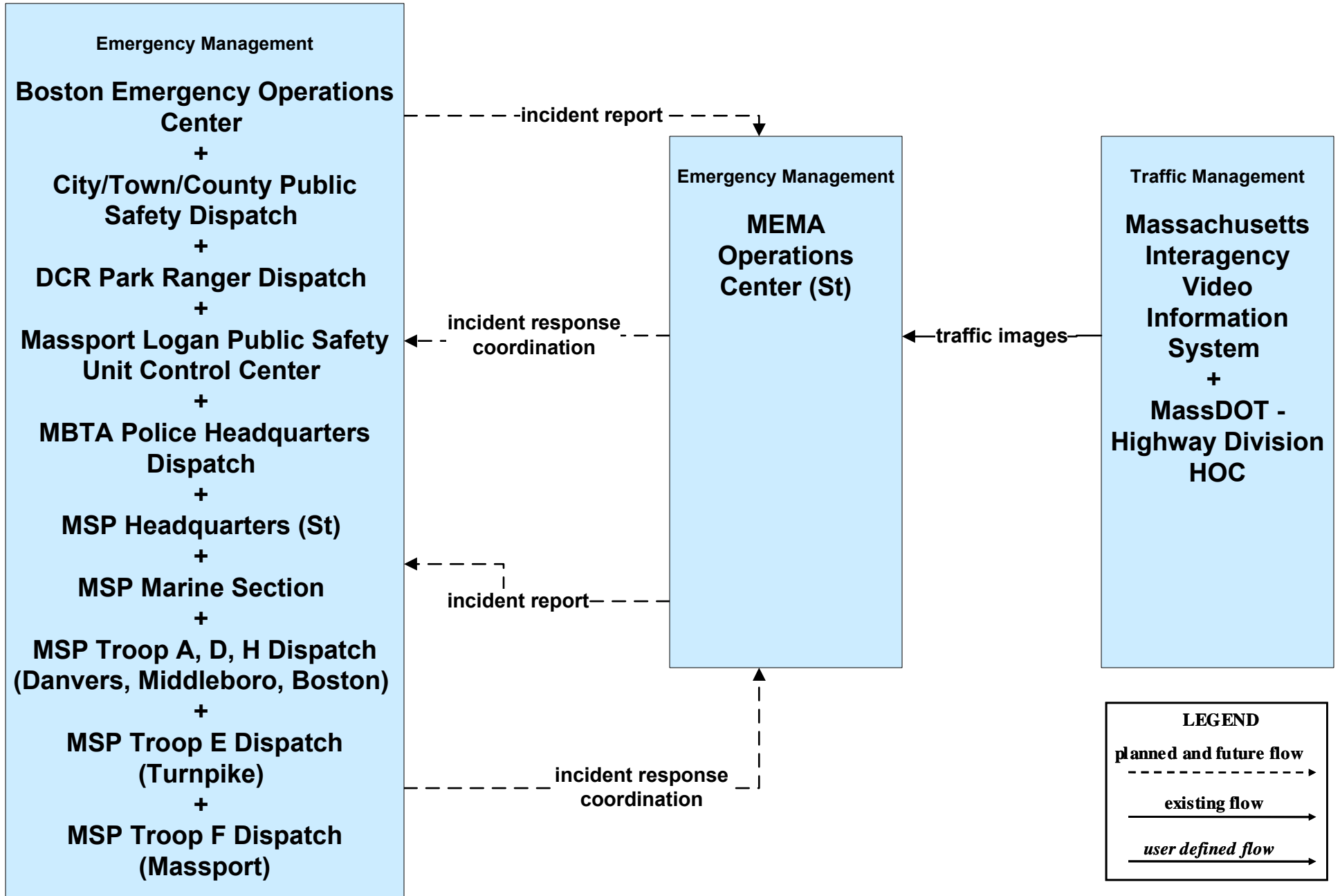
EM01 - Emergency Response Coordination Massport



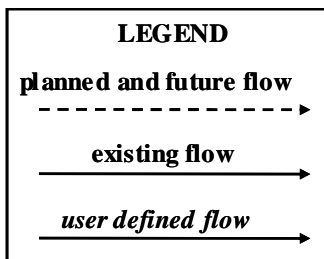
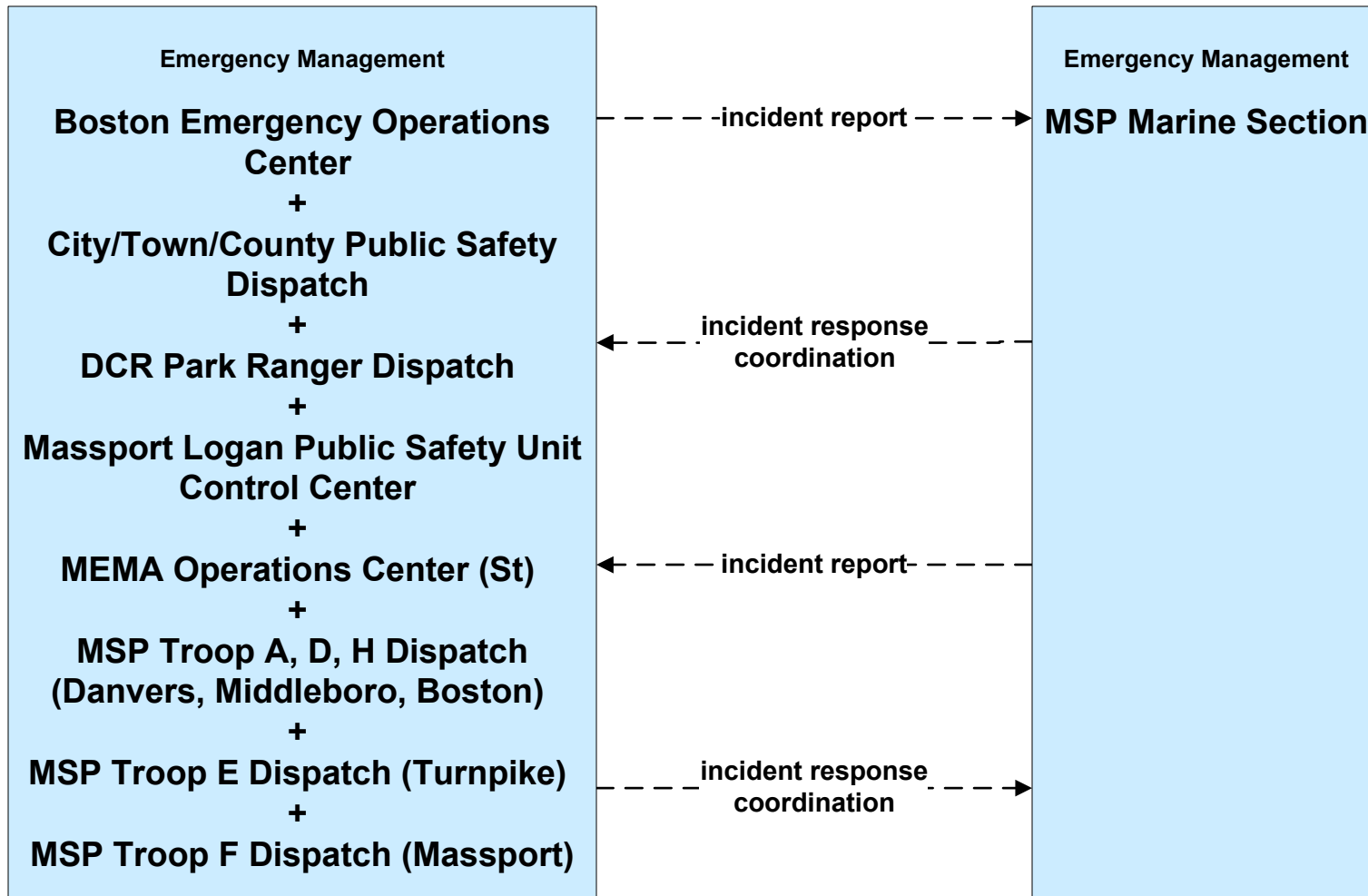
**EM01 - Emergency Response Coordination
MBTA and DCR Dispatch**



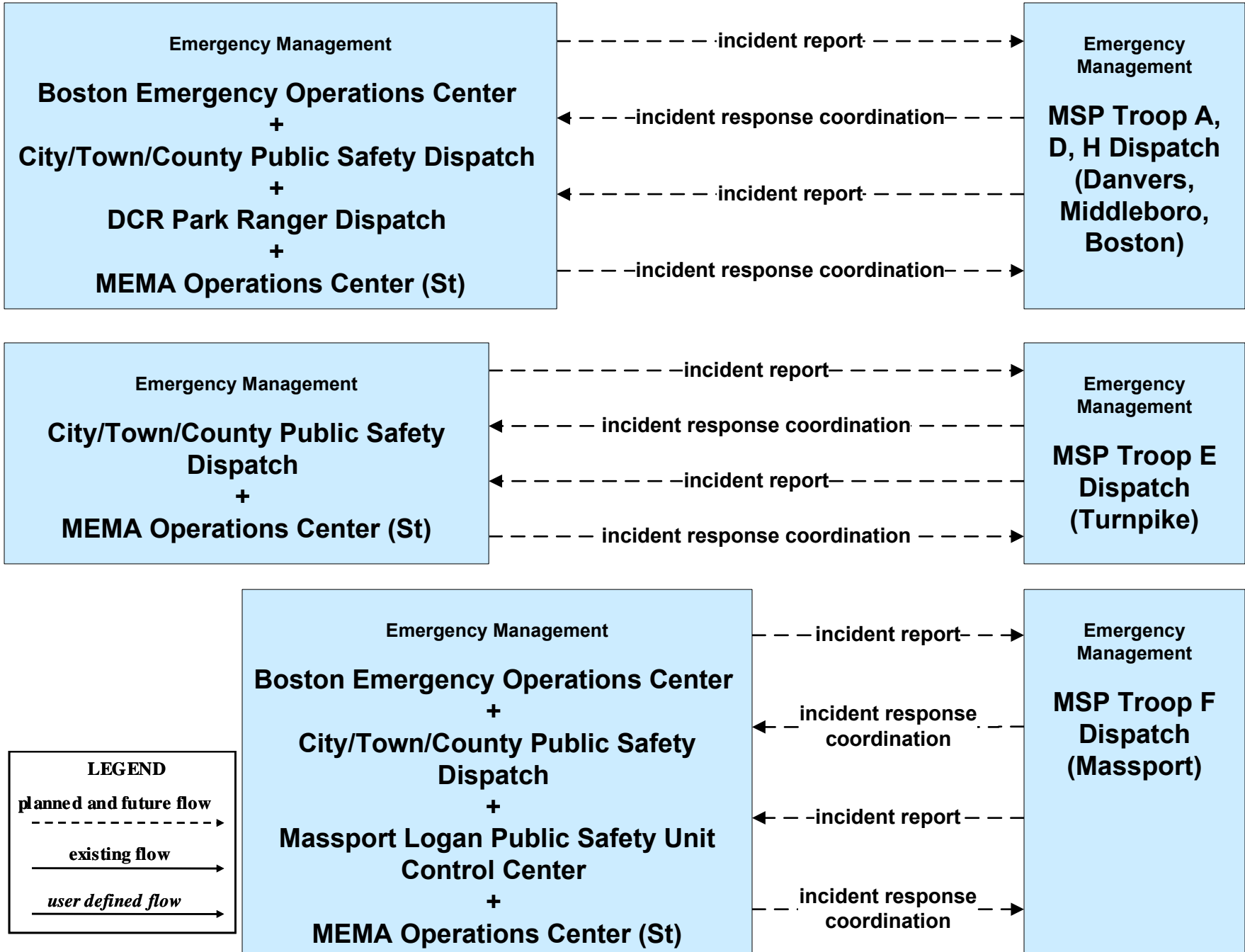
**EM01 - Emergency Response Coordination
MEMA**



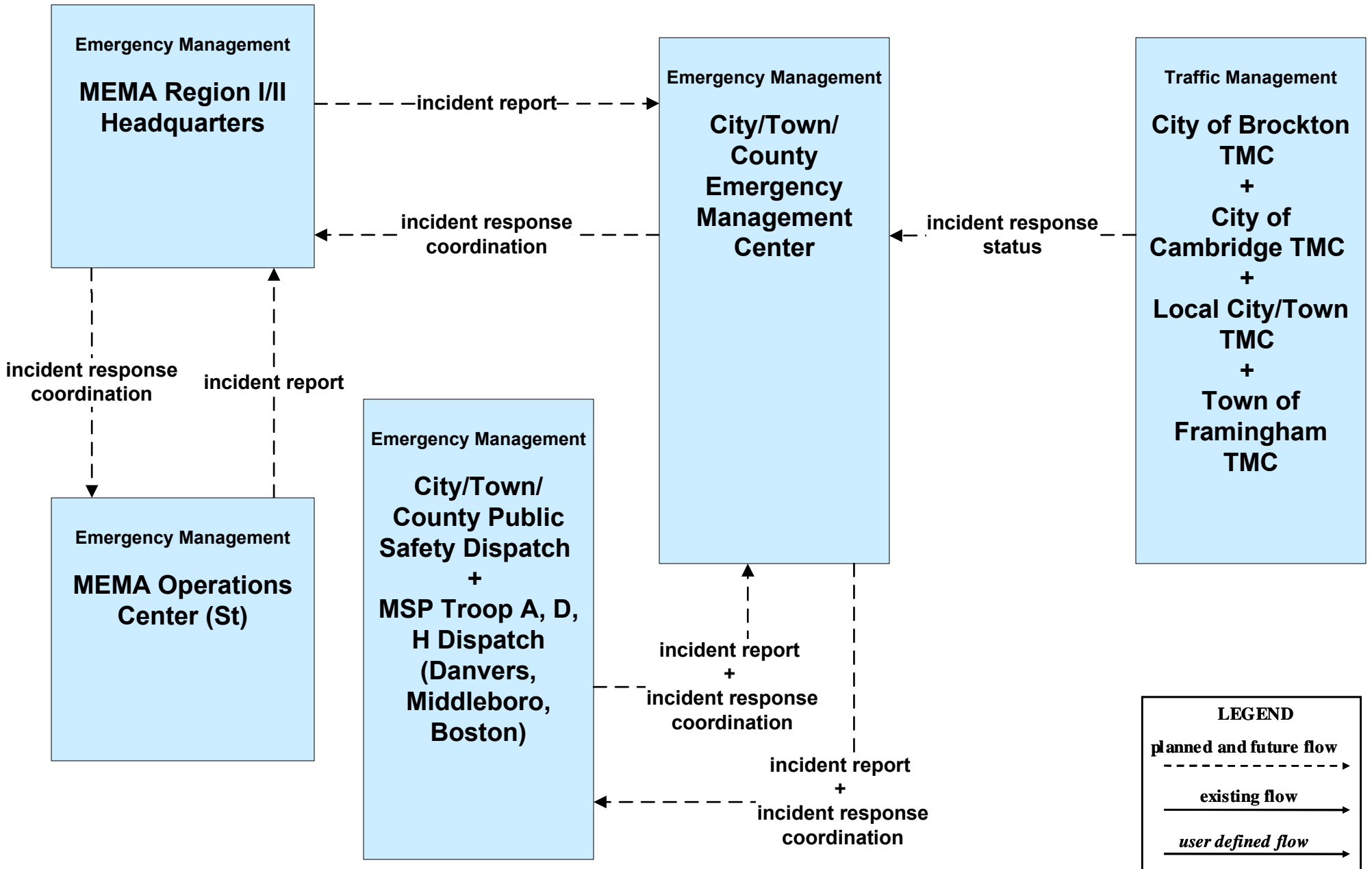
**EM01 - Emergency Response Coordination
MSP Marine Division**



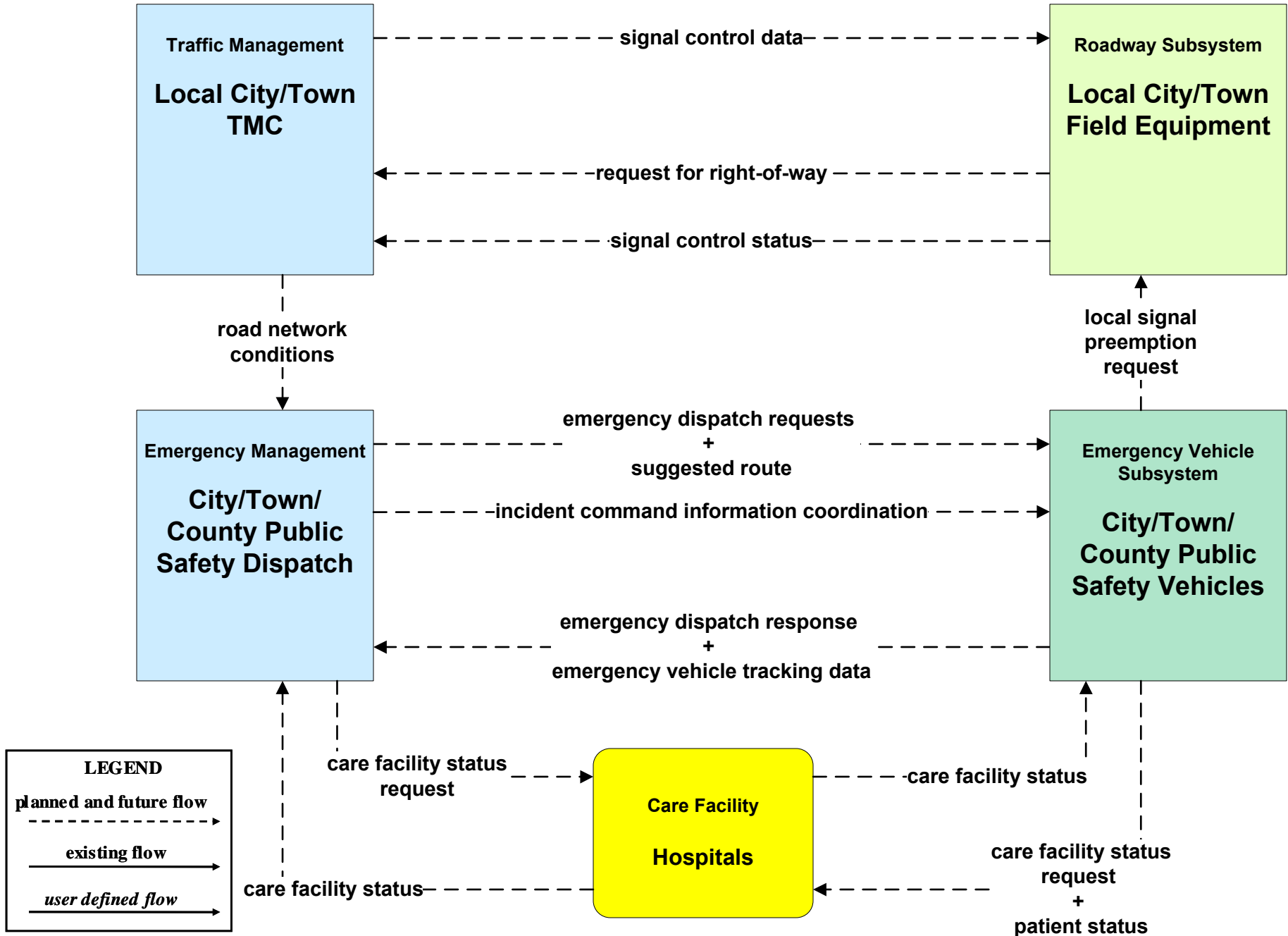
EM01 - Emergency Response Coordination MSP



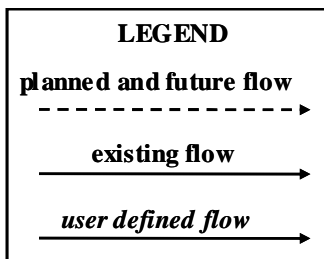
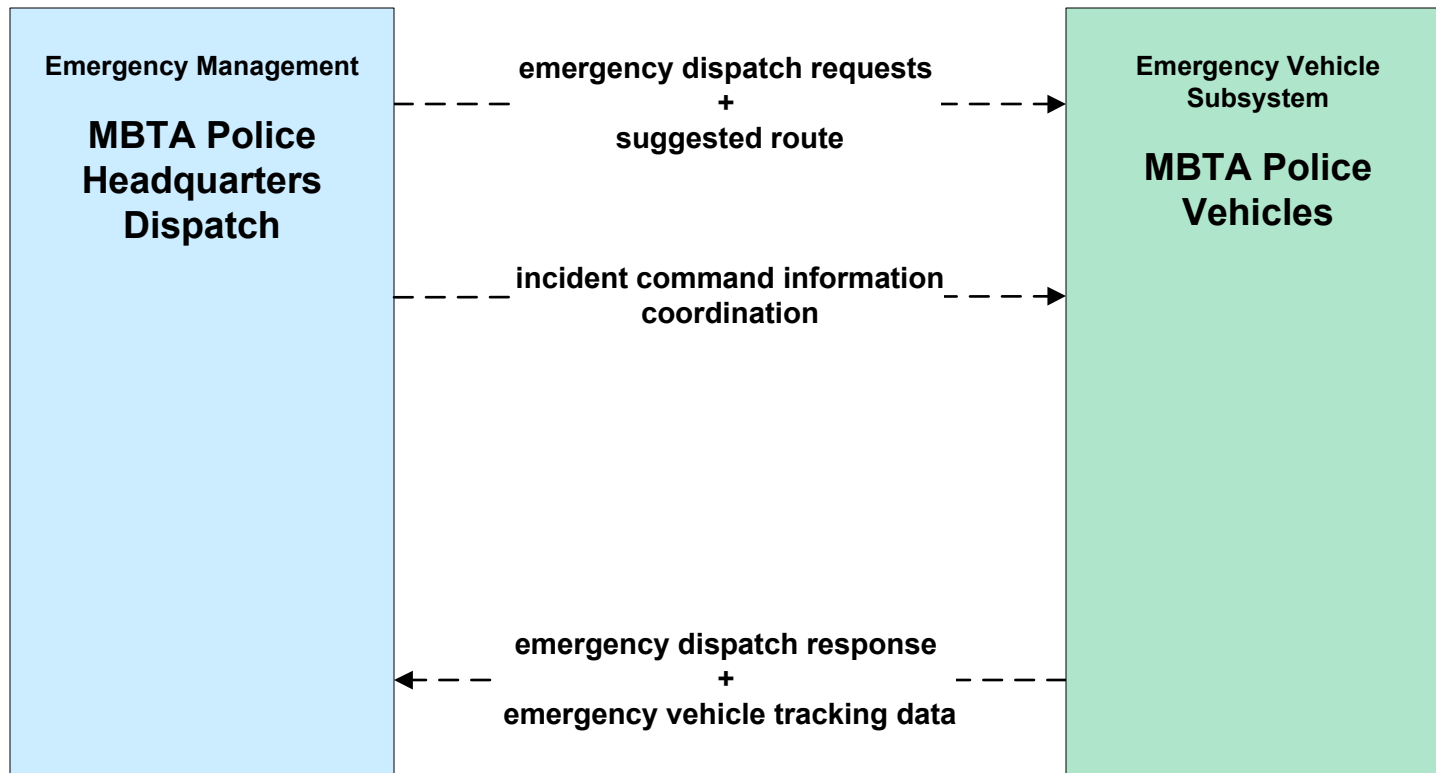
**EM01 - Emergency Response Coordination
City/Town/County Emergency Management Center**



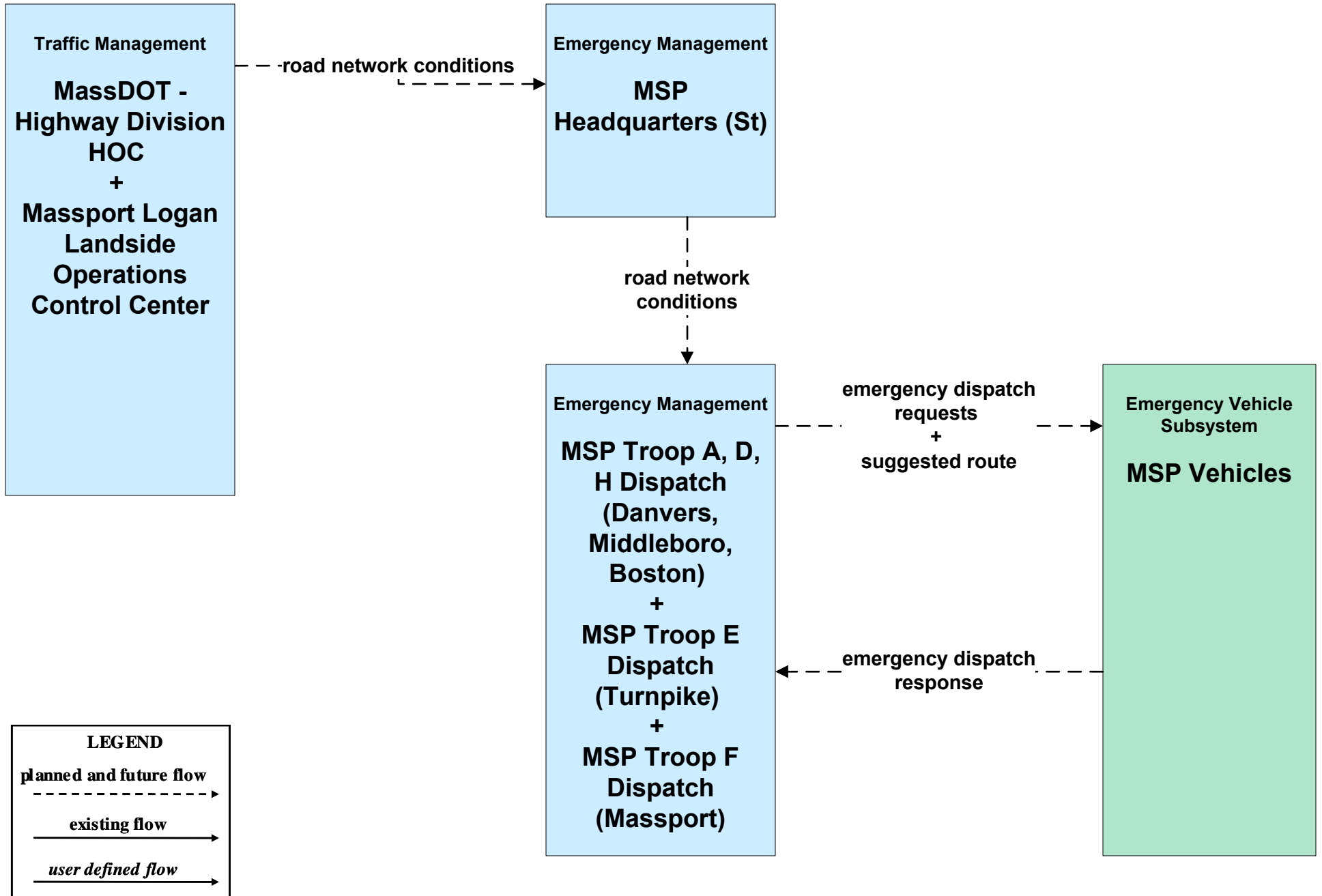
EM02 - Emergency Routing Local Cities/Towns/Counties



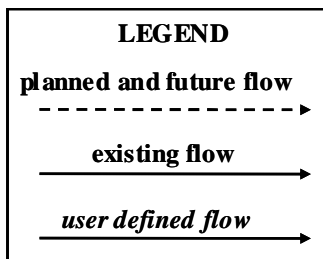
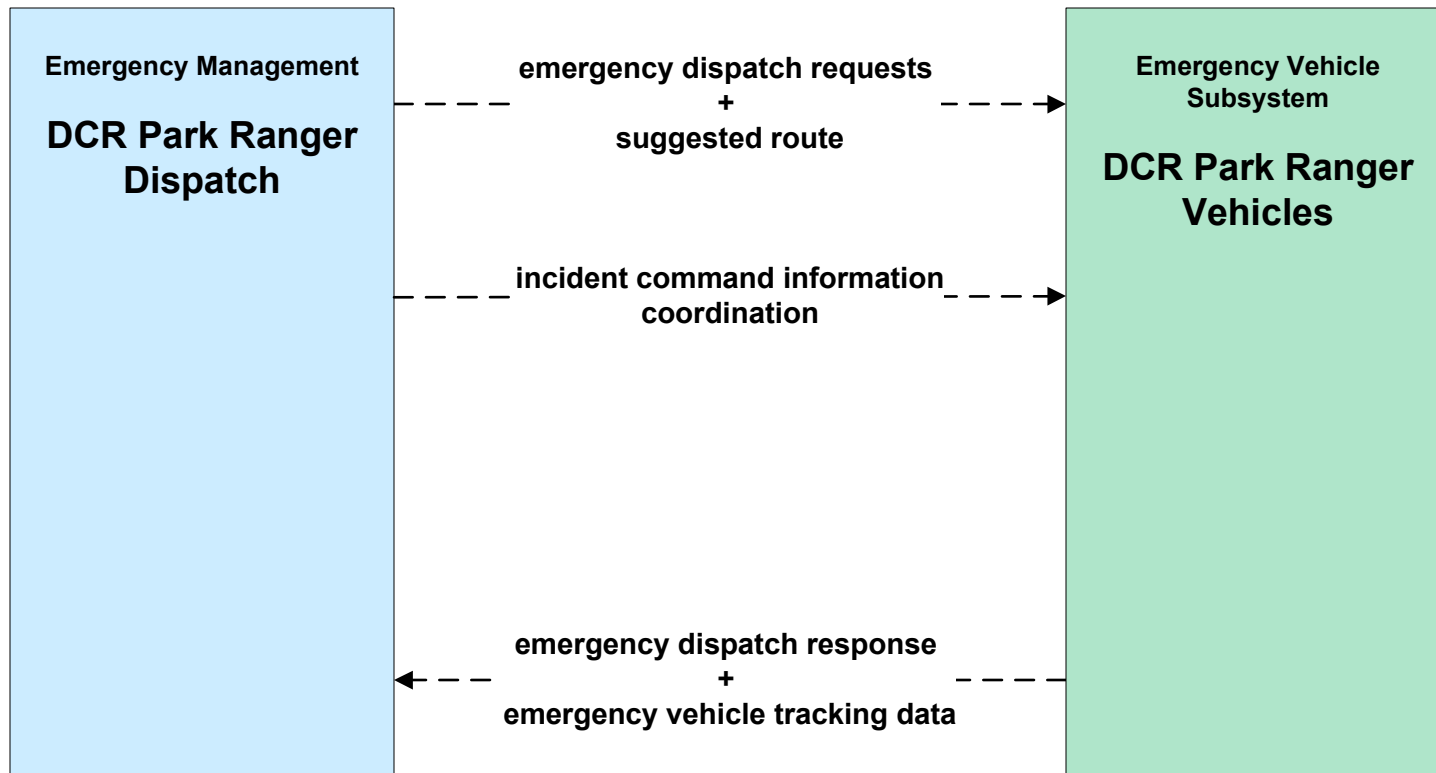
EM02 - Emergency Routing MBTA



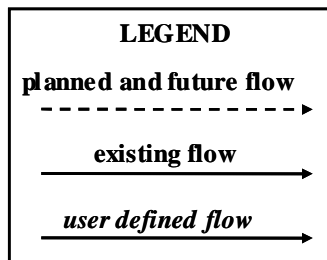
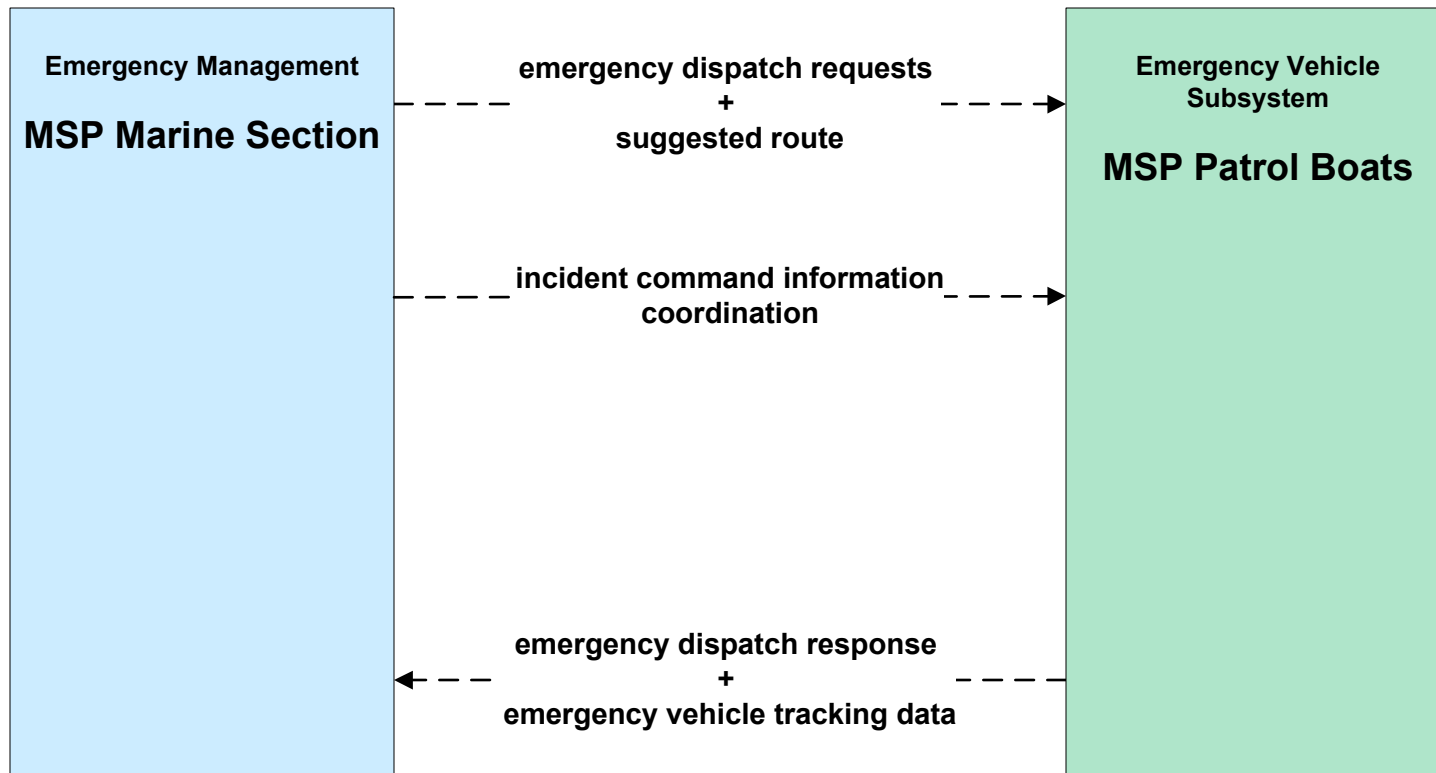
EM02 - Emergency Routing MSP



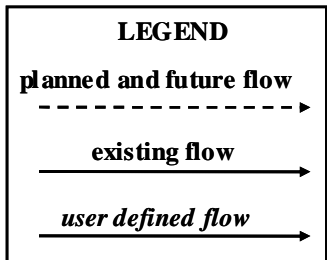
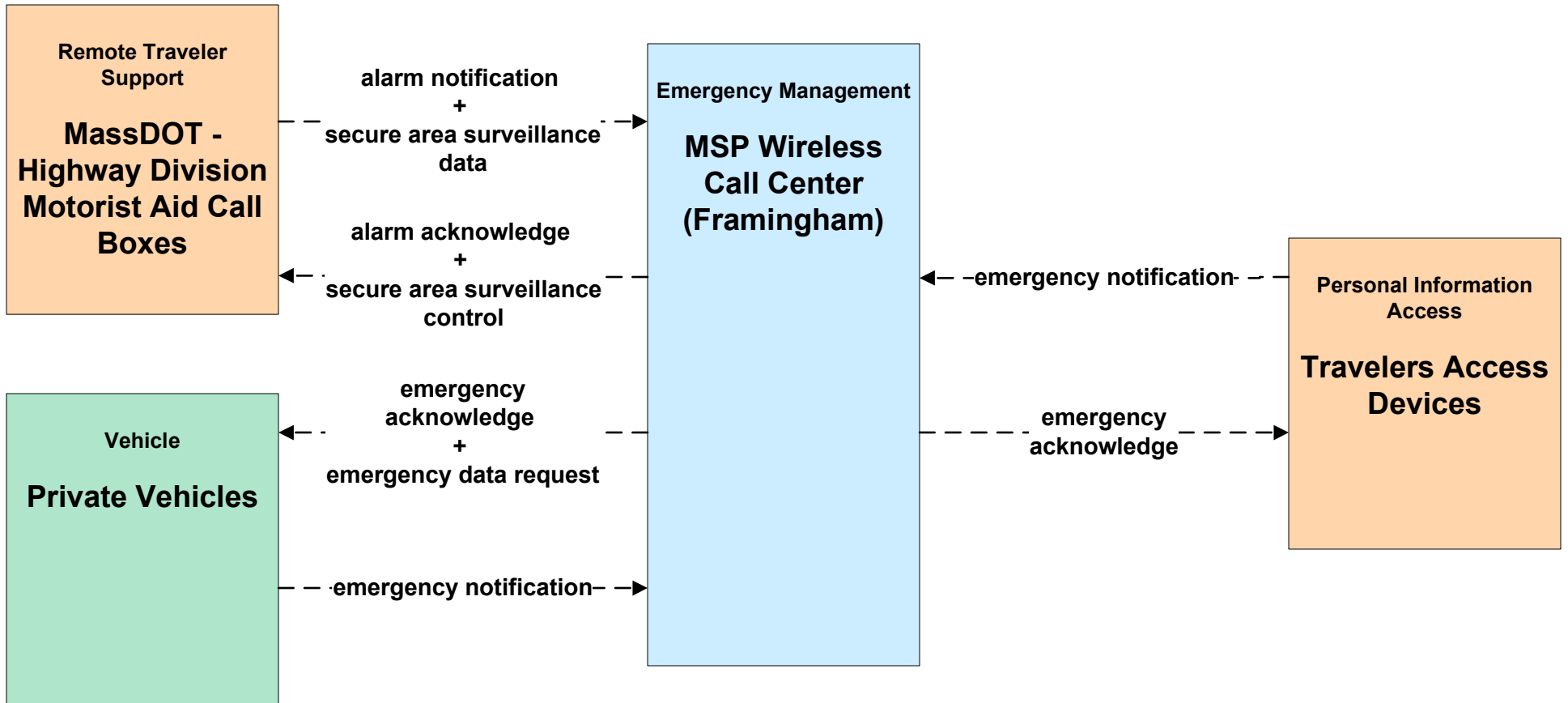
EM02 - Emergency Routing DCR



EM02 - Emergency Routing MSP Patrol Boats

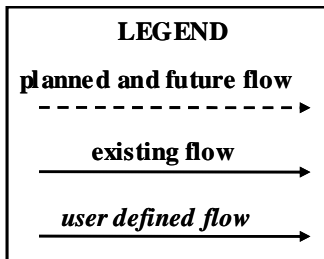
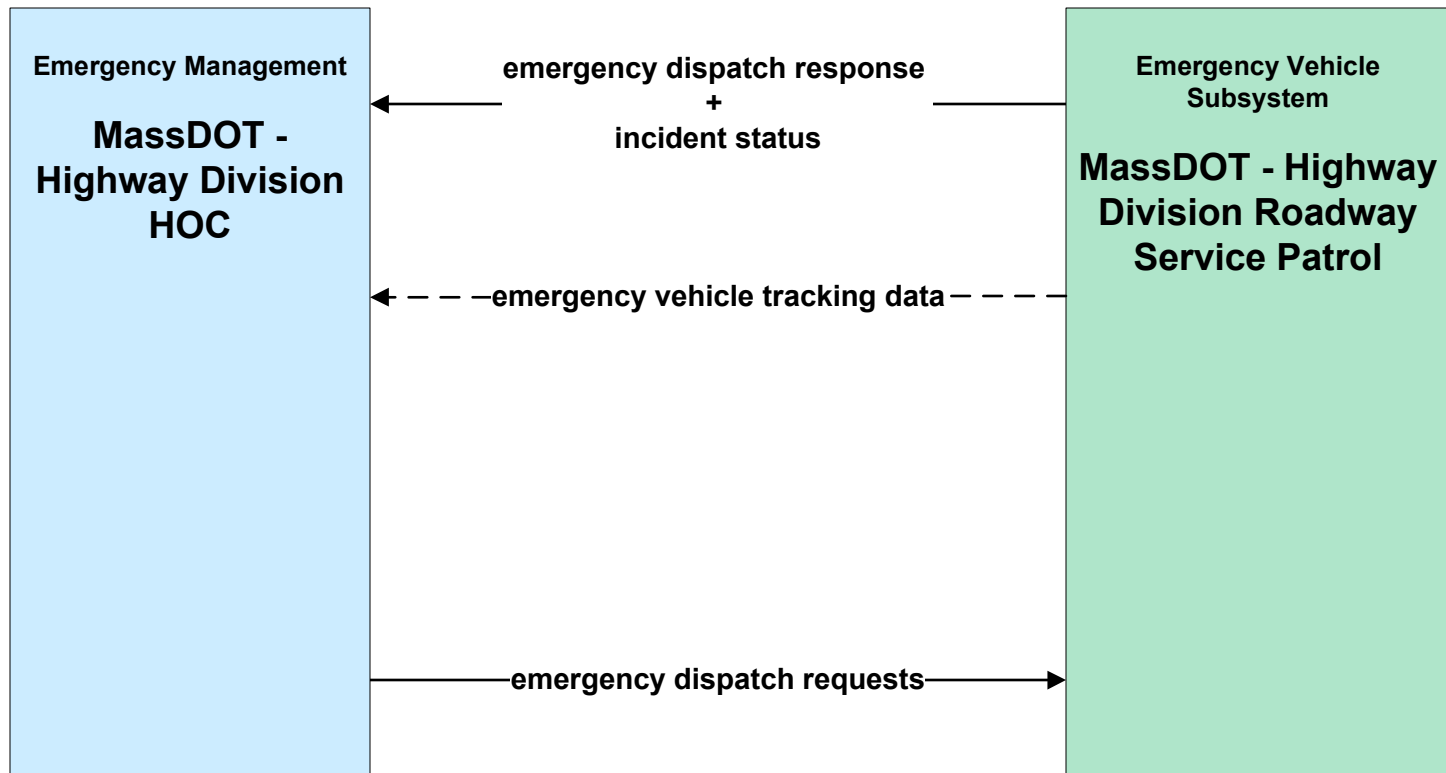


EM03 - Mayday Support MSP Wireless Call Center

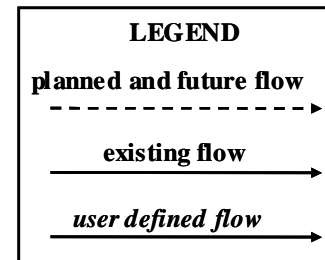
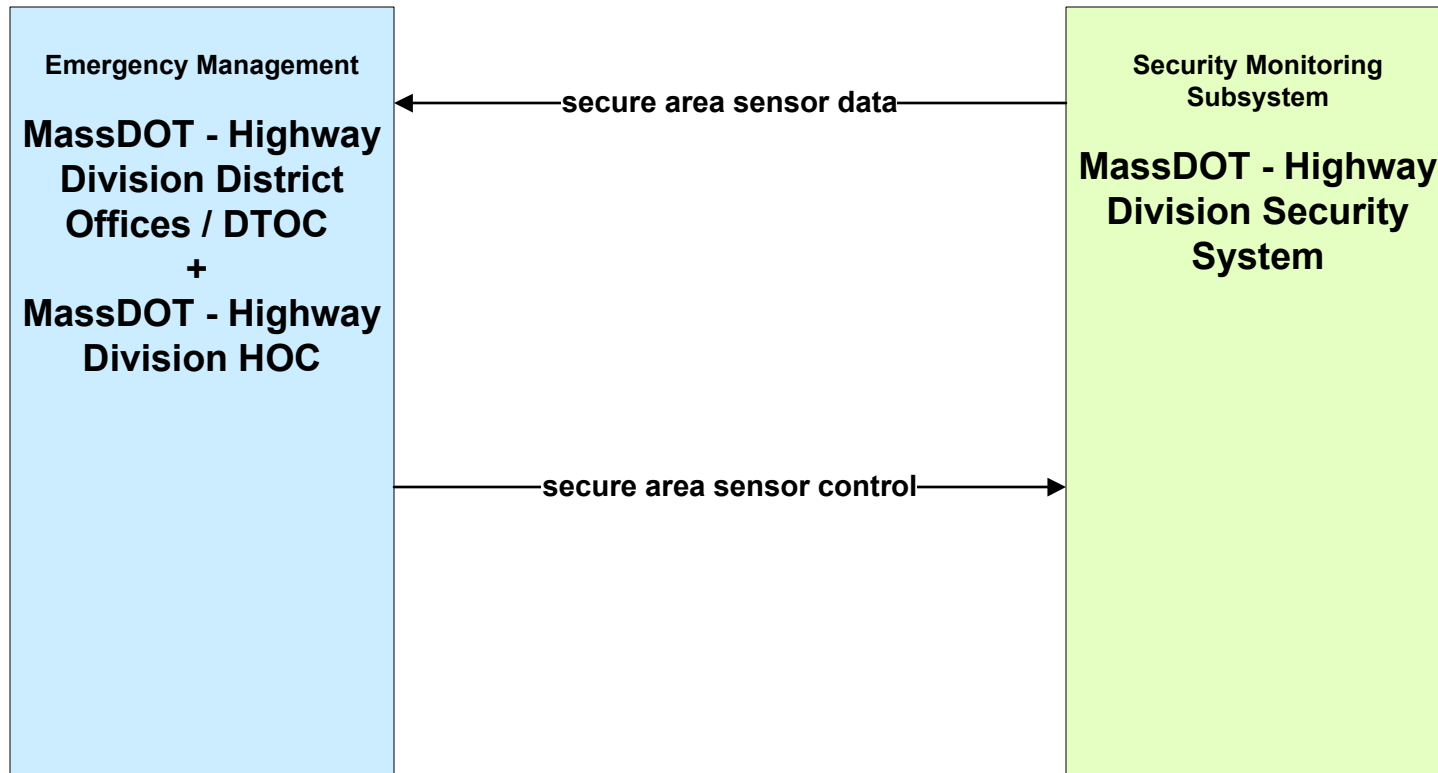


Depending if PSAP will accept data messages from their clients.

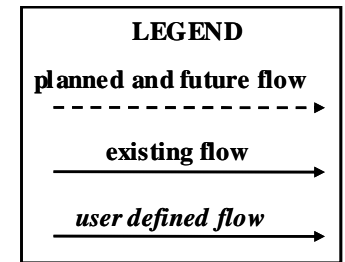
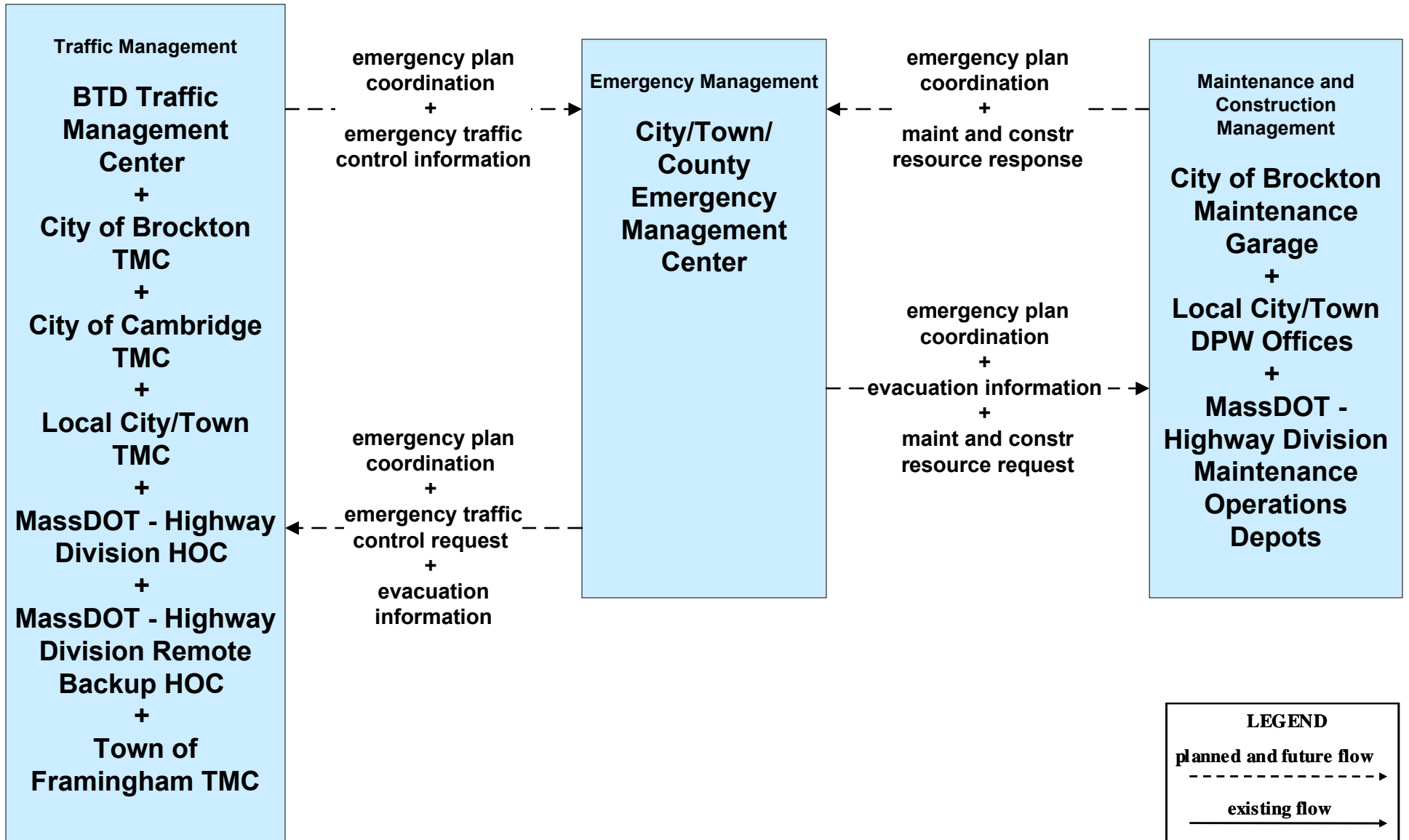
**EM04 - Roadway Service Patrols
MassDOT - Highway Division**



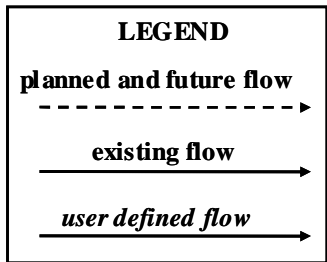
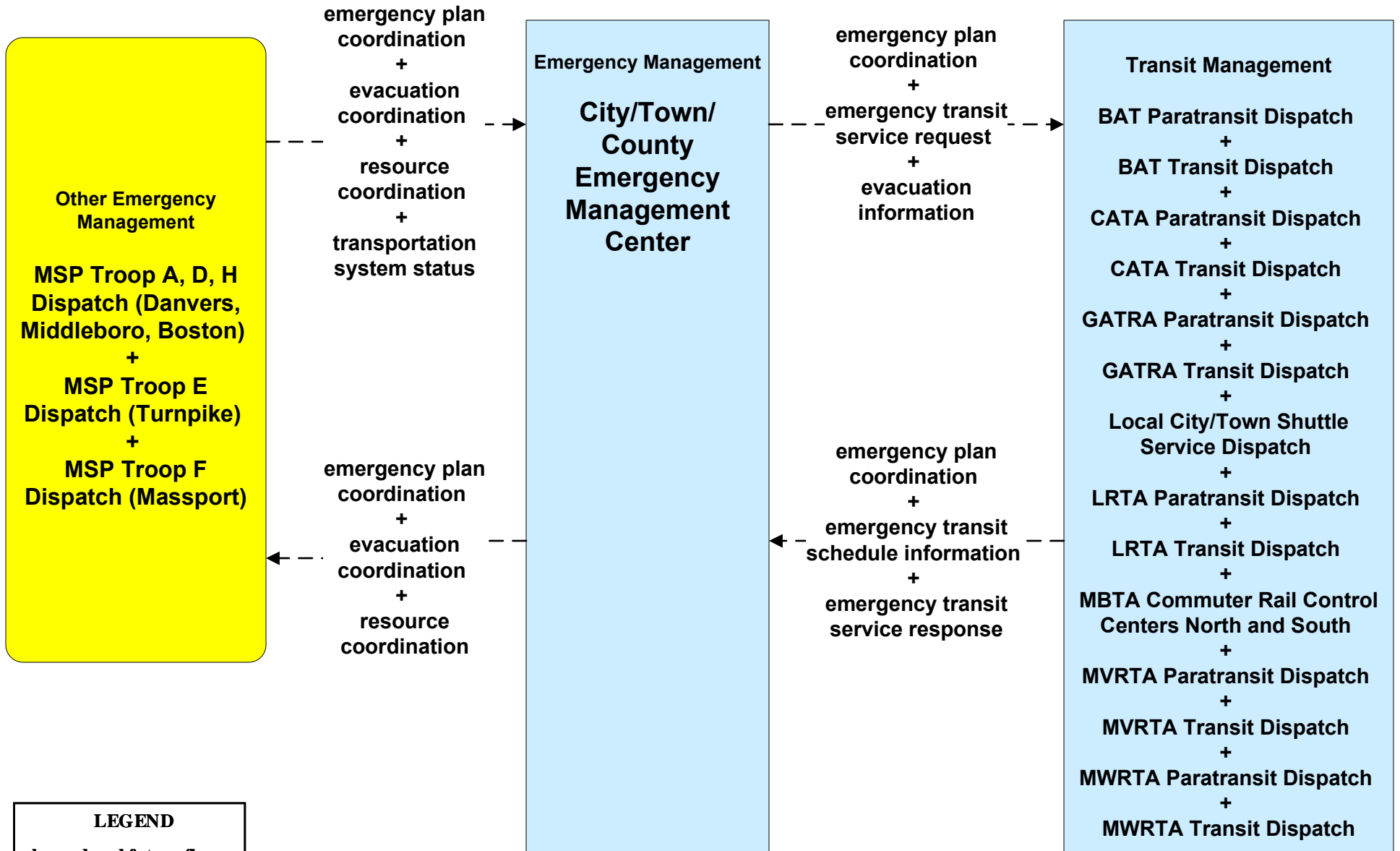
**EM05 - Transportation Infrastructure Protection
MassDOT - Highway Division**



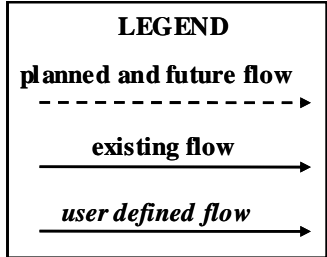
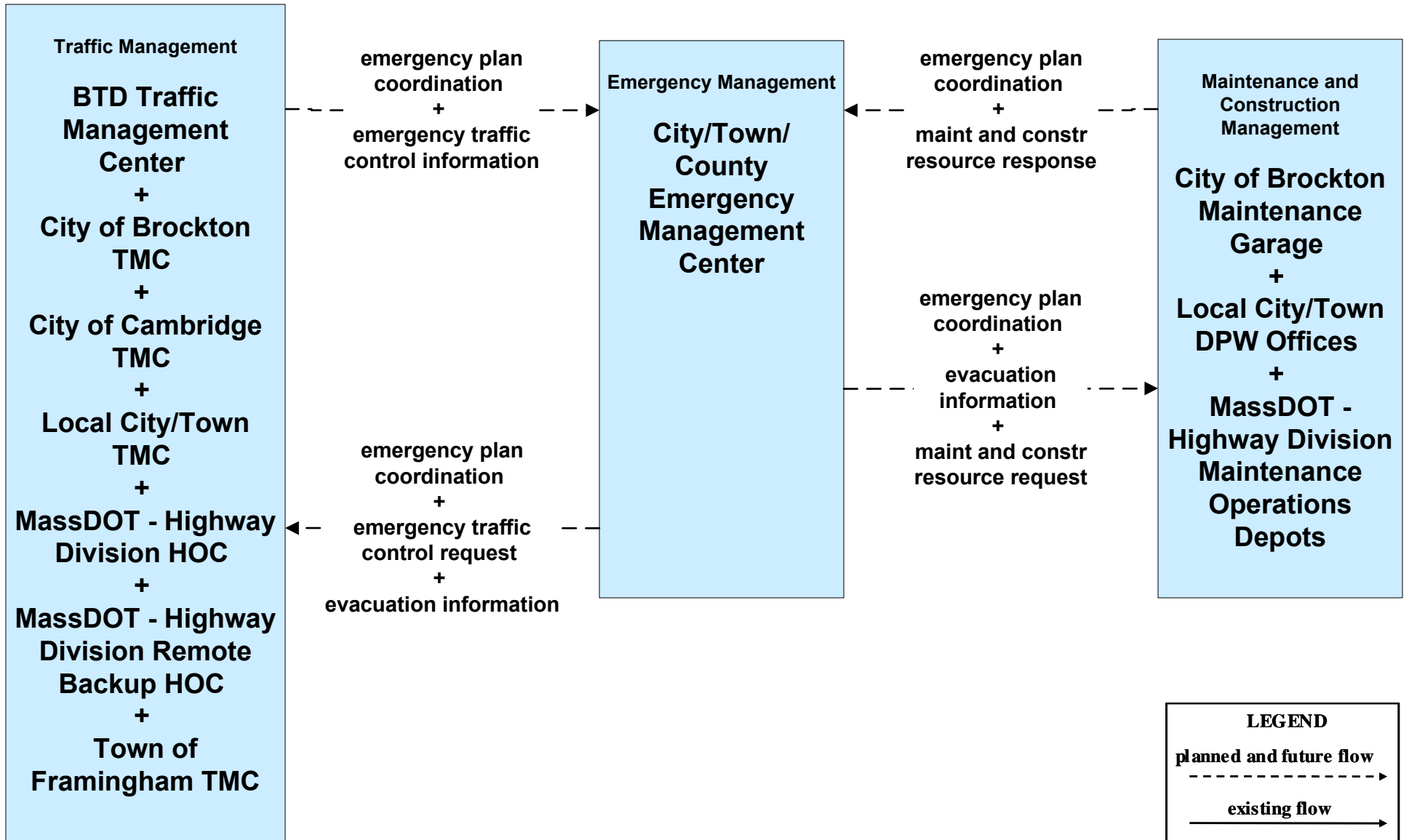
EM08 - Disaster Response
City/Town/County Emergency Management Center (1 of 2)



EM08 - Disaster Response
City/Town/County Emergency Management Center (2 of 2)



**EM09 - Evacuation and Reentry Management
City/Town/County Emergency Management Center (1 of 2)**



**EM09 - Evacuation and Reentry Management
City/Town/County Emergency Management Center (2 of 2)**

