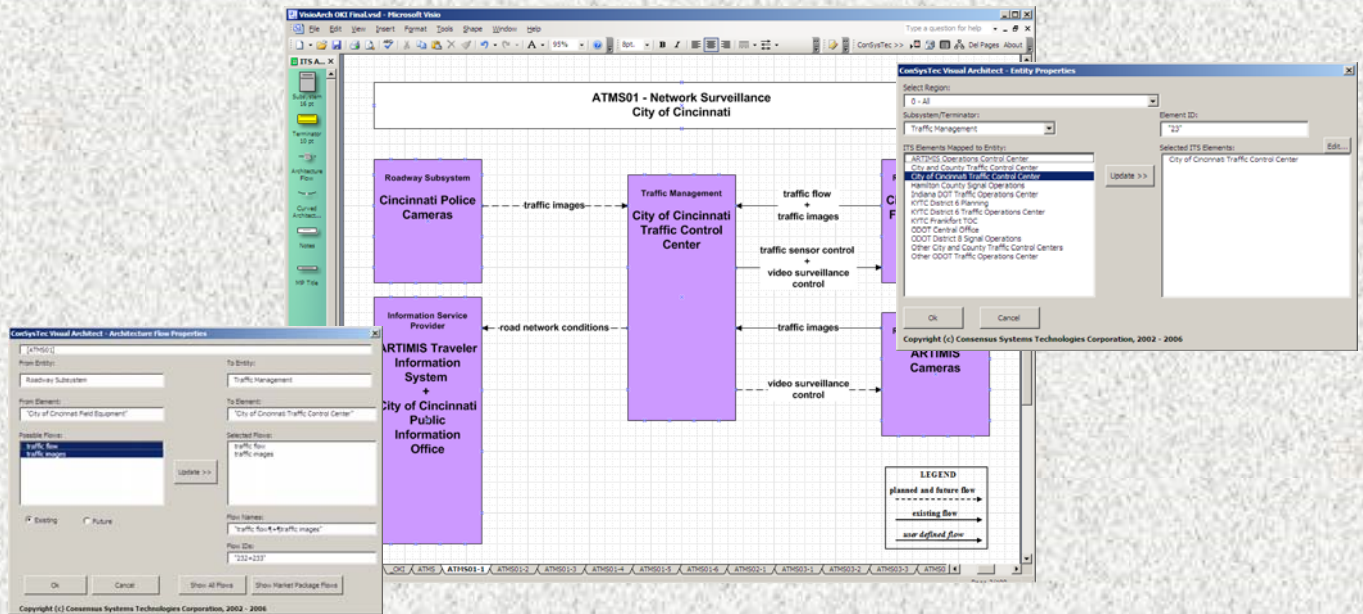


Visual Architect[®]



Visual Architect[®] is ConSysTec's front-end application for *Turbo Architecture*, the de-facto standard for encoding regional ITS architectures using the U.S. National ITS Architecture as a starting point.

Based on Microsoft Visio, Visual Architect provides a highly interactive and graphical view of the ITS Elements and their associated system interfaces being defined in the regional ITS architecture via customized service package diagrams. Using Visual Architect, users can quickly create and modify the systems interfaces between local stakeholder ITS Elements. Visual Architect then will update customized service package and regional ITS architecture flow selections in Turbo Architecture based on the content of the customized market package diagrams.

Visual Architect is not a replacement for Turbo Architecture, but rather complements it. After the user has finished using Visual Architect to update the Turbo Architecture database, there are still steps, unrelated to Visual Architect that the user must perform to have a complete Turbo Architecture deliverable, such as selecting equipment packages and functional requirements. However, Visual Architect greatly speeds the time required to communicate operational concepts to stakeholders, encode regional ITS architecture topology information into Turbo Architecture using architecture flow diagrams that you can control, and enables accurately and easily managing large regional ITS architectures.